

Groupier Installation and Uninstallation Guide

HRG4+ 2017/18 Local Payment Groupier and PS 2017/18 Tool

Published May 8th 2017



**Information and technology
for better health and care**

Contents

Purpose	3
System Requirements	3
Installing the Grouper	3
Uninstalling the Grouper	9
Getting in Touch	11

Version Control

Version 1.0	Baseline (Published 24 th April)
Version 1.1	Update to system requirements to provide more information re .Net 4.5 requirement (Published 8 th May)

Purpose

Following the release of the HRG4+ 2017/18 Local Payment Grouper a few of our users have been in contact with us to say they are experiencing problems with installation of the new product.

In order to help our users we are providing this detailed guide which gives the pre-requisite system requirements and then walks through both the installation and uninstallation process.

To note: While this document specifically refers to the HRG4+ 2017/18 Local Payment Grouper the same principles apply to the PS 2017/18 Operational Tool.

System Requirements

The Grouper and Prescribed Services Tool have been developed on a platform that supports Window servers 2008 onwards. This is in line with a Cabinet Office letter which was published on 8 April 2014.

The letter advised that NHS organisations could apply for an additional 12 month support extension for XP after which NHS organisations should have plans to migrate away from Windows XP from April 2015.

https://www.gov.uk/government/uploads/system/uploads/attachment_data/file/314721/DHandCabinetOfficeMicrosoftXPupdate8April14.pdf

Therefore, in order to install the Grouper or Prescribed Specialised Services Tool then the Operating Systems (OS) needed are Windows 7/ Server 2008R2 and above. The software can be run on Windows Vista but it is considered unsupported due to that OS being past end of Microsoft Extended Support.

The minimum specification advised to run the software products based on the minimum recommended PC specification to run Windows 7 as specified by Microsoft:

1 gigahertz (GHz) or faster 32-bit (x86) or 64-bit (x64) processor

1 gigabyte (GB) RAM (32-bit) or 2 GB RAM (64-bit)

A minimum install (excluding example files) requires 43Mb of free disk space.

Microsoft Windows .NET Framework version 4.5 or above

Previous operating systems are not supported in line with the edict from the cabinet office.

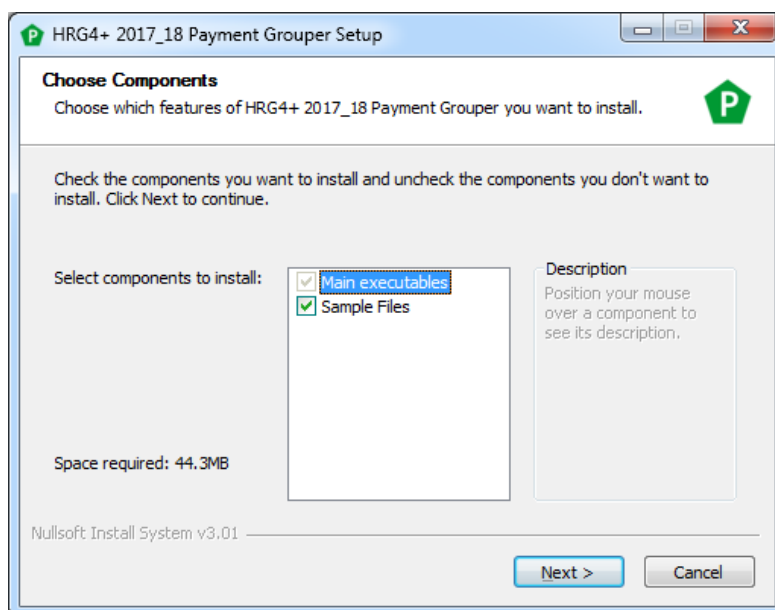
Installing the Grouper

Once you have downloaded the Grouper and saved the zip file to a suitable location, open the zip file and extract the installer i.e. HRGGrouperSetup.exe.

Double click on the installer and you will be taken to installation setup wizard.

It is important to note that depending upon your security settings you may require elevated permissions or an administrator account to install this application, if this is the case you will need to contact your IT department to get the appropriate permissions.

If you have the appropriate permissions, the default installation should take less than a minute.



The first screen that is presented is to select the components to be installed. The Main executable component is defaulted to install and can't be changed but a user can choose whether they wish to install a duplicate copy of the '**Sample Files**' as part of the installation process.

The Sample Files include the Sample Data as published on the National Casemix Office website and the Sample RDF's that are installed as part of the main executable. These files allow users to see the minimum required format of the data that is required to run the products.

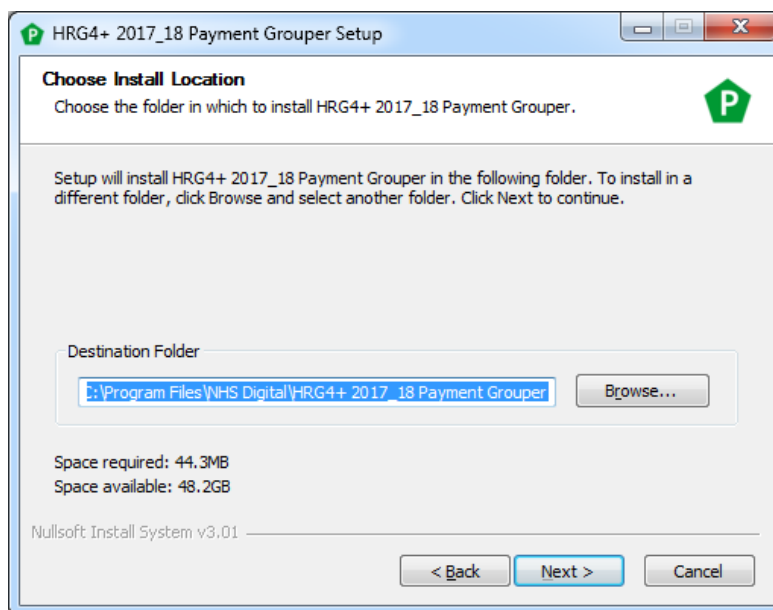
The sample data is provided so users can easily test the product. They also provide a very quick and easy way of testing the install and this is explained at the end of the section.

The sample files in the main executable may not be easily edited from the default install location due to administrative permissions, which is why we also provide the sample data to download from the web.

As an improvement to this product we added the functionality to allow users to also save and install both the sample data and sample RDFs to a location which is more accessible and will allow editing and means you will not now need to download the sample data separately from our website.

Therefore the option is available to extract these files. If the default option of installing is left checked, then these folders are installed as a default into '**My Document**' so enabling users to have a local version.

Once you have chosen the components to install, click '**Next**'.



The next screen allows the user to choose where they would like to install the Grouper software. The destination folder defaults to install to '**C:\Program Files\NHS Digital\HRG4+ 2017_18 Payment Grouper**'.

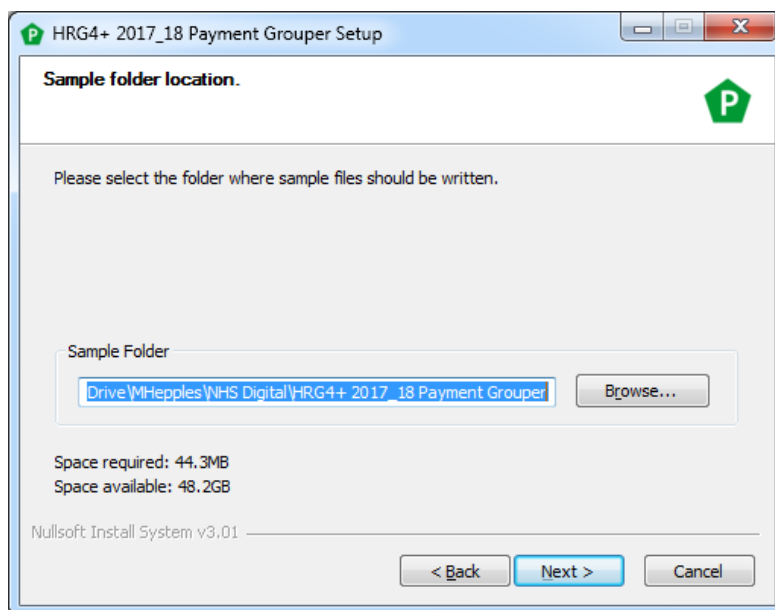
It is strongly recommended that you use this as the destination folder for the Grouper software unless there is a need to install to another location.

The reason for this is that should an update to the same product be made available or should a user wish to re-install the same product, then the updated version will overwrite the previous so avoiding unnecessary disk space being lost and keeping all the relevant files in a same single location.

If however you do wish to install to another location, then use the browse function and select to another folder location. It is important to set up a folder prior to installing the Grouper if installing to a different location or specifying a folder name in the path window where you wish to install.

As above, if you wish to reinstall an overwrite, then all you need to do is select the same location and provided there have been no name change to the default folder location (e.g. *HRG4+ 2017_18 Payment Grouper*), then the executable will simple overwrite the files as necessary.

When the appropriate destination folder is set, click '**Next**'.

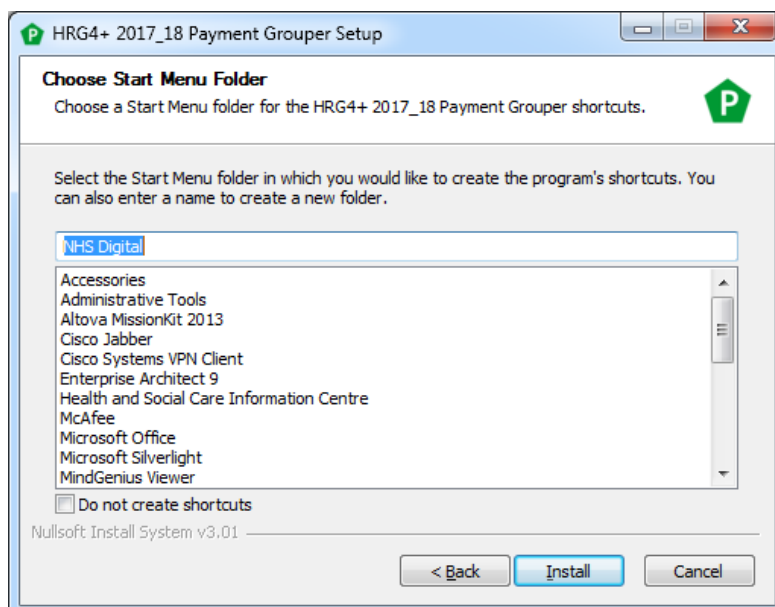


As stated above users have the option (if selected) of installing a duplicate set of **Sample Files** as part of the installation process.

The default installation destination is set to a user's **'My Document'** folder. If you do wish to install to another location, then simply use the browse function and select another folder location.

If you did not select to install the **'Sample Files'** component on the first screen, then this screen will not be shown as part of the installation process.

When the sample file folder is set, click **'Next'**.

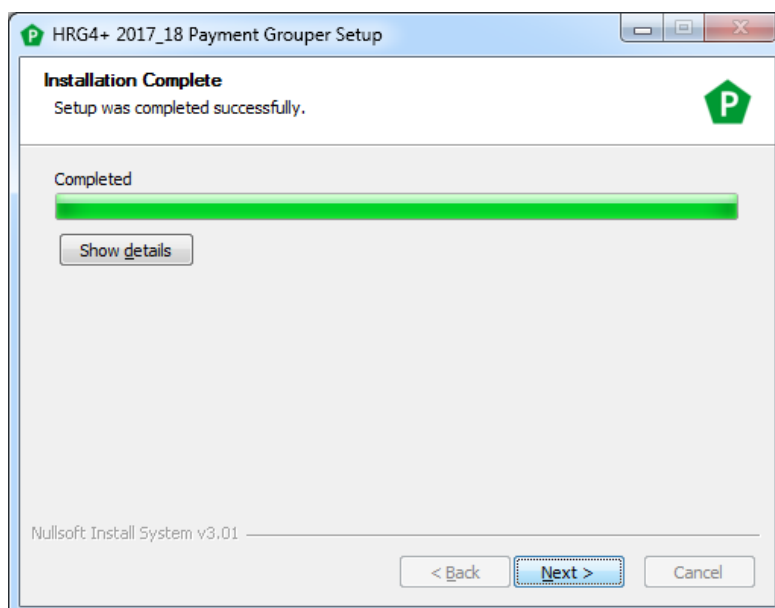


The next screen allows you to create a Grouper shortcut in the **'Start Menu Folder'**. This defaults to a folder called *NHS Digital*, which is recommended, but a user can change the folder name if they wish.

There is also an option not to create a shortcut by ticking the **'Do not create shortcuts'** box.

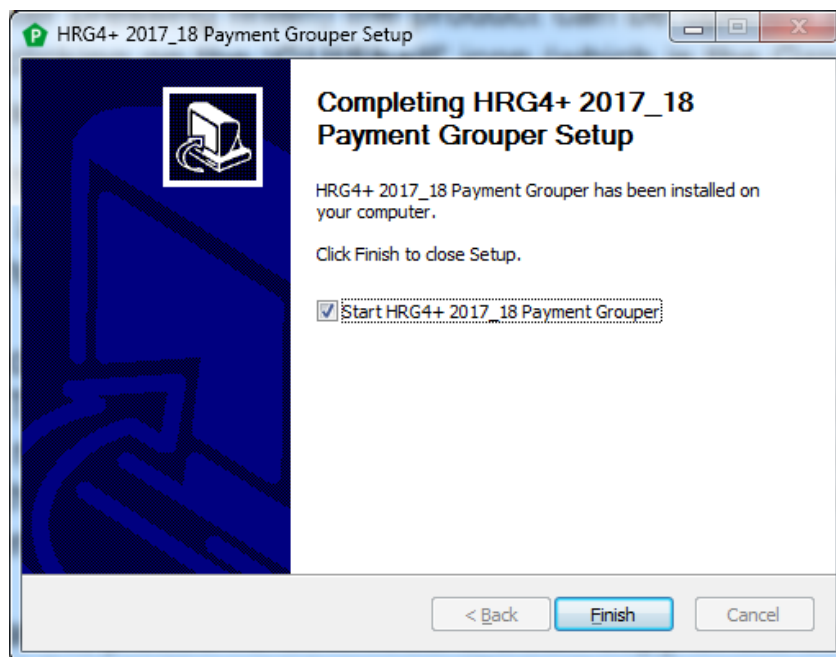
If at any point up to this stage you wish to alter any of the default or chosen file locations you can use and navigate back through the process using the **'<Back'** button.

Once you have set a shortcut folder, you are ready to complete the installation process by clicking the **'Install'** button.



The installation screen shows the progress of the installation and once completed click **'Next'**.

Users will then see the following screen which illustrates that the installation process is complete.



This final screen allows you to finish the installation process and close the installation wizard by clicking **'Finish'** or to open the Grouper directly by clicking the check box.

In the above example this will open the **'HRG4+ 2017_18 Payment Grouper'** and you are ready to start using the product.

Alternatively (or after pressing finish) the product can be opened from the shortcut link in the start menu, or by clicking on the **'GUIShell'** icon (which is the Grouper application) in the destination folder which was selected as part of the install.

A simple test that the application is working as expected, is to open the Grouper, select the sample APC RDF and then sample APC data and press process. This will result in successful grouping in less than 3 seconds resulting in 90% grouped and 10% ungrouped.

It is important to note that the sample data as provided will always result in this ratio of expected results. They are specifically designed and provided to do so and are product specific. If you do not obtain this result, but grouping has been successful then it is suggested you have altered the sample data in some way or you are using sample data designed to work with a different design.

So in the first instance, please re-download a clean copy of the sample data and expected results from the NCO website, which is specific to the relevant release and if you are new to using the Groupers please also read the User Manual. If you are still unsure, please get in touch with us and we will be happy to help walk-through the process with you.

Uninstalling the Grouper

If you do need to uninstall a Grouper, then the installation pack comes with an uninstall executable i.e. **Uninstall.exe**.

Name	Date modified	Type	Size
en	19/04/2017 13:54	File folder	
PluginData	19/04/2017 13:54	File folder	
Plugins	19/04/2017 13:54	File folder	
Sample Data	19/04/2017 13:54	File folder	
Sample RDF	19/04/2017 13:54	File folder	
About.dll	06/04/2017 10:58	Application extens...	20 KB
BatchGUI.dll	06/04/2017 10:59	Application extens...	44 KB
GrouperBatchApi.dll	06/04/2017 10:58	Application extens...	64 KB
GrouperCSharpAPI.dll	06/04/2017 10:58	Application extens...	31 KB
GrouperDatabaseVersionAPI.dll	06/04/2017 10:58	Application extens...	12 KB
GrouperDescriptions.dll	06/04/2017 10:58	Application extens...	12 KB
GrouperRdfMappings.dll	06/04/2017 10:58	Application extens...	22 KB
GrouperSchemaReader.dll	06/04/2017 10:58	Application extens...	27 KB
GUIShell.exe	06/04/2017 10:58	Application	443 KB
GUIShell.exe.config	06/04/2017 10:58	XML Configuratio...	3 KB
HomeGUI.dll	06/04/2017 10:58	Application extens...	21 KB
HRGGrouperc.exe	06/04/2017 10:59	Application	317 KB
HRGGrouperc.exe.config	06/04/2017 10:58	XML Configuratio...	1 KB
msvcp120.dll	31/03/2017 09:50	Application extens...	445 KB
msvcrl20.dll	31/03/2017 09:50	Application extens...	949 KB
Newtonsoft.Json.dll	31/03/2017 17:20	Application extens...	514 KB
RdfGUI.dll	06/04/2017 10:58	Application extens...	51 KB
SharedGUIResources.dll	06/04/2017 10:58	Application extens...	407 KB
SingleSpellGUI.dll	06/04/2017 10:58	Application extens...	64 KB
Uninstall.exe	19/04/2017 13:54	Application	339 KB
ViewerGUI.dll	06/04/2017 10:58	Application extens...	34 KB

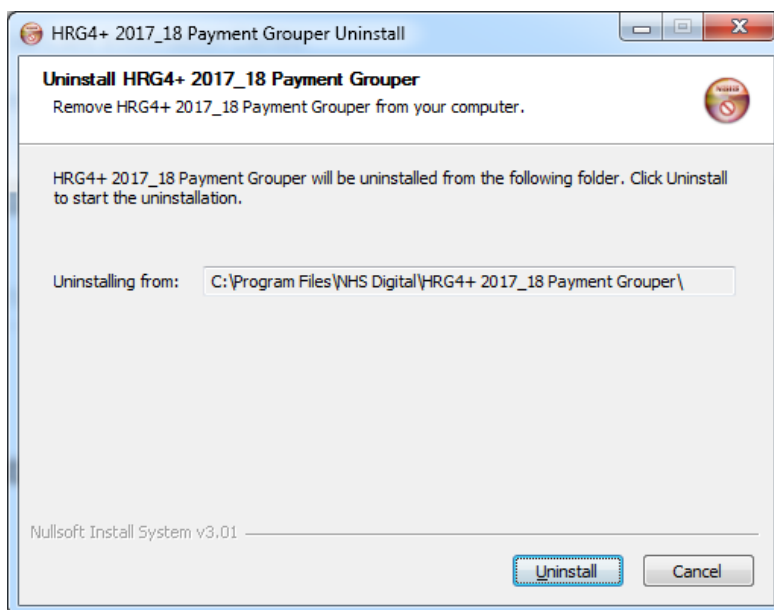
There is no need to uninstall the product if you are re-installing a fresh copy. Provided the file names have not been altered and the same destination folder is selected then the executable will overwrite the previous installation.

New products will similarly install as separate folders and will not effect previous products based on a different design.

If however you still feel the need to uninstall the product then the only consideration before Double-clicking the Uninstall.exe is to ensure that the above files are contained within a distinct separate folder.

This only matters to users who have used the functionality to create bespoke destination locations or who have altered the names of the destination folders/file names or added files to the program file folder after the installation. In this circumstance, users are instructed that prior to uninstalling the grouper, the files as listed above need to be contained in a separate sub-folder.

If you are ready to uninstall simply click '**Uninstall.exe**', and you will be presented with an uninstall dialogue box.

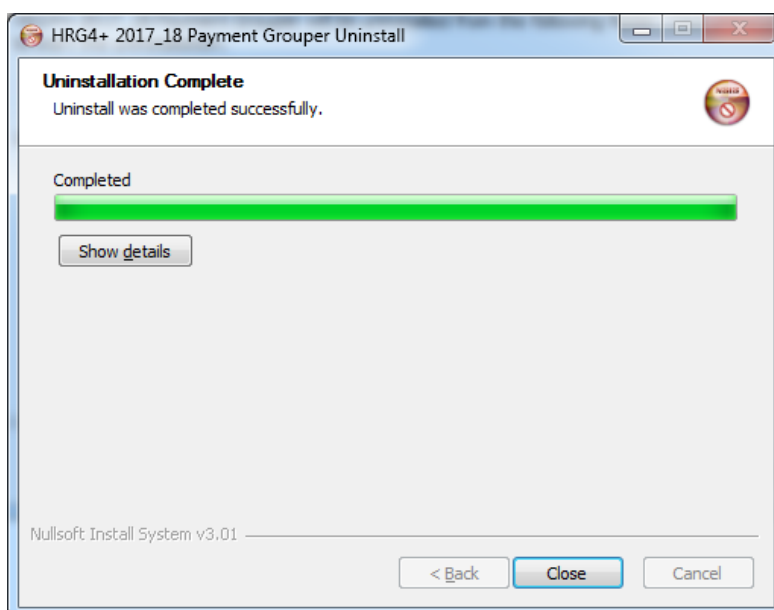


The uninstall screen confirms the folder and file path from which the software will be uninstalled.

Once you are happy that the folder and file path are correct, select '**Uninstall**'.

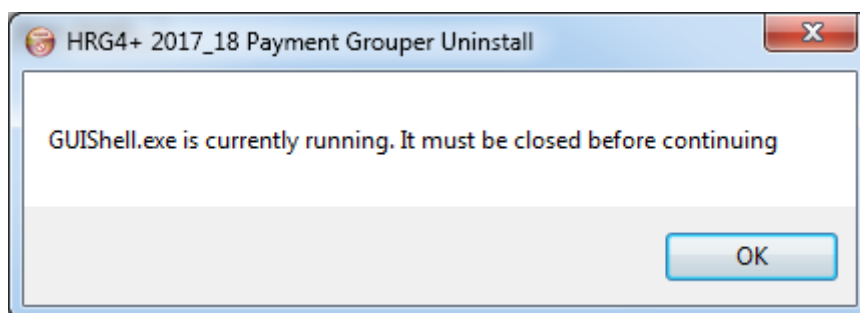
Whilst we strongly recommend users to use the default installation folder we recognise that by giving users the flexibility to install the product as they wish, then users may, in very rare circumstances wish to change the folder or file names, add files into the destination folders, or to not contain the Grouper files in a distinct sub-folder location. This will prevent the uninstallation from working correctly, but can be resolved by ensuring the installation files are named as given above and are stored in a separate sub-folder as per the standard install.

If after the uninstallation is complete you see any files remaining, these are files which were not created as part of the standard install or have been altered. These legacy files/folders can be moved or deleted as deemed appropriate by the user.



The uninstallation screen shows the progress of the uninstallation and once completed click **'Close'**.

If in the rare event that during the uninstallation process, you have elements of the Grouper open, then the uninstallation will be halted and the following message will be displayed.



To continue the uninstallation process, close any element of the Grouper and click **'Ok'** and the uninstallation process will continue.

Getting in Touch

If you wish to know more about how to get the best out of the Grouper functionality then please do read our Grouper User Manual which goes into much greater detail than is provided here and is provided on our website as part of what we hope is a full and useful documentation suite which we publish with each HRG4+ Grouper release.

If you require any help or have any suggestions as to how we can help improve the products in future, then please get in touch with us via our helpdesk.

enquiries@nhsdigital.nhs.uk

Please cite "For the attention of the National Casemix Office" and we will endeavour to get back to you within 3 days.