

# Summary of Changes

**HRG4+ 2020/21 Consultation Grouper  
from:**

**HRG4+ 2019/20 Local Payment Grouper**

Published November 2019

**C** 20/21



**Information and technology  
for better health and care**

# Contents

---

<b>Purpose</b>	<b>3</b>
<b>Changes to the HRG4+ Grouper</b>	<b>4</b>
Grouper Input Changes	4
Grouper Output Changes	4
Grouper Software Changes	5
Grouper Algorithm Changes	5
HRG Design Changes	6
<b>Appendix A: HRG Distribution by Subchapter</b>	<b>8</b>

---

## Purpose

The purpose of this summary is to provide an overview of the main changes between the HRG4+ 2020/21 Consultation Grouper and the HRG4+ 2019/20 Local Payment Grouper.<sup>1</sup>

Changes are broken down by:

- **Grouper Input Changes**
- **Grouper Output Changes**
- **Grouper Software Changes**
- **HRG Design Changes**

This document also includes a high-level description of design changes by subchapter as well as HRG distribution by subchapter, in Appendix A.

This document is intended as a high-level summary to be used to form the basis of further analysis and investigation rather than as a comprehensive list of all differences between grouper releases. Further HRG4+ supporting documentation is available from the National Casemix Office website: <https://digital.nhs.uk/services/national-casemix-office/downloads-groupers-and-tools/payment-groupers>.

---

<sup>1</sup> The HRG4+ 2020/21 Consultation Grouper has the same design as the HRG4+ 2019/20 Local Payment Grouper.

## Changes to the HRG4+ Grouper

The following changes have been implemented between the HRG4+ 2019/20 Local Payment Grouper and the HRG4+ 2020/21 Consultation Grouper.

### Grouper Input Changes

#### Paediatric Critical Care and Neonatal Critical Care

A correction has been made to the Grouper User Manual to correct an error in the text describing which input field should be used to populate the field DISDATE in the Paediatric Critical Care (PCC) and Neonatal Critical Care (NCC) grouping datasets.

Prior to the HRG4 2013/14 Local Payment Grouper, the input field used to populate the field DISDATE was Discharge Date (Hospital Provider Spell), and the Grouper User Manual reflected this. However, an error was introduced into the HRG4 2013/14 Local Payment Grouper User Manual stating that input field Critical Care Discharge Date should be used to populate the field DISDATE. The underlying PCC and NCC grouping logic remained unchanged in the 2013/14 design, and the chapter summaries document for the HRG4 2013/14 Local Payment Grouper still correctly stated that Discharge Date (Hospital Provider Spell) should be used to populate DISDATE.

The Grouper User Manual has now been corrected for 2020/21 to state that Discharge Date (Hospital Provider Spell) should be used to populate DISDATE.

In addition, the number of episodes that can be opened in a single instance within Single Spell for NCC has been reduced. Previously, 250 episodes could be created within a single instance, but this has been limited to 87 to match the number of episodes that can be opened in Admitted Patient Care (APC) and PCC.

### Grouper Output Changes

#### Specialised Service Codes

Specialised Service Codes (SSCs) are no longer output by the Grouper. The output fields, however, have been retained for this release but will no longer be populated.

#### UZ01Z – Blank PROCODET and PROVSPNO

In the HRG4+ 2019/20 Consultation Grouper, the input fields PROCODET and PROVSPNO were made mandatory in the APC dataset. This was to ensure spells were formed correctly before processing.

Where either of these fields is left blank, the Grouper should automatically apply UZ01Z to the Finished Consultant Episode (FCE) and Spell records. However, it was noted that if the PROVSPNO field was left blank in a single-episode spell and processed via the “Batch” functionality, then it would still generate a valid FCE and Spell HRG. If the PROVSPNO field was left blank in a multi-episode spell and processed via the “Batch” functionality, then it would generate a valid FCE HRG and the Spell HRG would be UZ01Z.

If the fields PROCODET and/or PROVSPNO were left blank in the APC dataset in Single Spell, an error message was generated but a UZ01Z HRG was not output for the FCE and Spell.

A fix has now been implemented to ensure that wherever the fields PROCODET and/or PROVSPNO are left blank in the APC dataset, then the Grouper automatically generates a UZ01Z FCE and Spell HRG in both Batch processing and Single Spell.

## Grouper Software Changes

The following changes apply to the Graphical User Interface (GUI):

### Single Spell

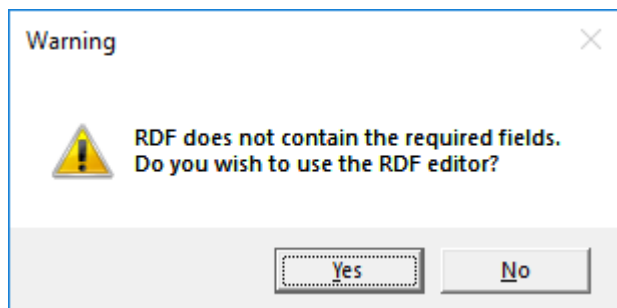
A fix has been applied to the field SpellErrors in the Spell output window in the APC database. When the APC database is selected, the Single Spell window is populated with a set of input and output fields. In the Spell output window, one of the field names is labelled "SpellErrors". Previously, once data was processed, the name of this field would change to "Errors". This has now been addressed so that when data is processed, the field name remains "SpellErrors".

### RDF

The text within the warning message box that appears when the "Clear" button has been selected has been changed. Previously the text stated, "Clear all field positions?", but this has now been changed to "Clear all input fields?" to indicate changes will be lost to all columns within the RDF window, not just the Position column.

### Warning Message

When creating an RDF for APC, the RDF must always contain the field DIAG\_01 as this is mandatory for Grouping. If an RDF is manually edited/created outside of the RDF Editor and a mandatory field is not included and then loaded into either Batch or Single Spell, then the following warning message is generated:



If an RDF is manually edited/created and the field DIAG\_01 is missing but other DIAG fields are present and this is loaded into Batch or Single Spell, then the warning message is not generated.

The Grouper now checks for the array of diagnosis fields, so the RDF must always include DIAG\_01, otherwise the warning message will be generated.

## Grouper Algorithm Changes

### Age increase across multi-episode spells

In a multi-episode spell, when the Grouper checks the age between episodes (where the age changes), the Grouper previously validated the age difference against the calcepidur value rather than the epidur value provided in the record.

## HRG Design Changes

### Update of base design

The design base for the HRG4+ 2020/21 Consultation Grouper is the HRG4+ 2019/20 Local Payment Grouper design, which is itself based on the HRG4+ 2016/17 Reference Costs design, updated to include the OPCS-4.8 release, which came into effect April 2017.

As with the HRG4+ 2019/20 Local Payment Grouper, the HRG4+ 2020/21 Consultation Grouper relies on the 5<sup>th</sup> edition of the ICD-10 classification.

### No change to the number of HRGs

The number of HRGs has remained unchanged at 2,832 between the HRG4+ 2019/20 Local Payment Grouper and the HRG4+ 2020/21 Consultation Grouper.

### Change to HRG label

The label of HRG XA05Z, and the label of its associated HRG root, XA05, has been changed from "Neonatal Critical Care, Normal Care" to "Neonatal Critical Care, Neonatology Supported Care" to clarify that the patients grouping to this HRG are not receiving active critical care but are being supported in a neonatal unit.

### Update to ophthalmology grouping logic

In the previous HRG design, where minimally invasive glaucoma surgery (MIGS) was recorded alongside a cataract procedure, without any additional procedures, activity would not escalate from HRG root BZ91 Complex, Glaucoma or Iris Procedures to a higher resource HRG root. The HRG design has been amended so that where these two procedures are recorded together, the spell will escalate to a higher resource HRG root, BZ30 Complex, Cataract or Lens Procedures.

### Changes to Best Practice

Changes made to best practice are noted in the tables below.

**Table 1: New BP flags Introduced in C2021**

BP	Name	Notes
BP94	Endoscopic laser fragmentation of calculus of kidney	
BP95	Endoscopic resection of prostate (TUR)	BP95 and BP96 are part of a hierarchy; and BP96 trumps BP95.
BP96	Resection of prostate by laser	

**Table 2: Day Case Incentive BP flags deleted in C2021**

BP	Name
BP65	Creation of arteriovenous fistula for dialysis
BP66	Dacryocysto-rhinostomy including insertion of tube
BP68	Endoscopic insertion of prosthesis into ureter
BP69	Excision biopsy of lymph node for diagnosis (inguinal)
BP78	Ureteroscopic extraction of calculus of ureter
BP90	Hemithyroidectomy, lobectomy, partial thyroidectomy
BP93	Incisional hernia

**Table 3: Altered BP flags (Additional requirements in C2021)**

<b>BP</b>	<b>Name</b>	<b>Notes</b>
BP01	Fragility hip and femur fracture	<ul style="list-style-type: none"><li>• HRGs: 10 new HRGs (HT22A-C, HT23A-D, HT24A-C)</li><li>• OPCS: 7 new procedure triggers (W201, W202, W198, W247, W231, W232, W208)</li><li>• ICD-10: 6 new ICD-10 triggers (S723, S7230, S7231, S724, S7240, S7241)</li><li>• BP name change from “Fragility hip fracture”</li></ul>

## Appendix A: HRG Distribution by Subchapter

The following table includes a high-level description of design changes implemented in the HRG4+ 2020/21 Consultation Grouper by subchapter as well as HRG distribution by subchapter in the HRG4+ 2020/21 Consultation Grouper compared to the HRG4+ 2019/20 Local Payment Grouper.

Changes made to the design of one HRG subchapter may have a significant impact on HRG grouping within other subchapters. This is especially true where changes have been made to procedure hierarchy values. Likewise, global design changes may impact HRG grouping within a subchapter even where no changes have been made to the subchapter itself.

Subchapter	C20/21	P19/20	Comment
AA Nervous System Procedures and Disorders	101	101	No change to HRG number or labels
AB Pain Management	13	13	No change to HRG number or labels
BZ Eyes and Periorbita Procedures and Disorders	94	94	No change to HRG number or labels Logic amended on procedure code classifying minimally invasive glaucoma surgery (MIGS) to ensure escalation to higher resource HRG root when recorded with code classifying cataract procedure
CA Ear, Nose, Mouth, Throat and Neck Procedures	120	120	No change to HRG number or labels
CB Ear, Nose, Mouth, Throat and Neck Disorders	12	12	No change to HRG number or labels
CD Dental and Orthodontic Procedures	23	23	No change to HRG number or labels
DZ Thoracic Procedures and Disorders	176	176	No change to HRG number or labels
EB Cardiac Disorders	48	48	No change to HRG number or labels
EC Open and Interventional Procedures for Congenital Heart Disease	21	21	No change to HRG number or labels

Subchapter	C20/21	P19/20	Comment
ED Open Cardiac Procedures for Acquired Conditions	48	48	No change to HRG number or labels
EY Interventional Cardiology for Acquired Conditions	65	65	No change to HRG number or labels
FD Digestive System Disorders	54	54	No change to HRG number or labels
FE Digestive System Endoscopic Procedures	37	37	No change to HRG number or labels
FF Digestive System Open and Laparoscopic Procedures	112	112	No change to HRG number or labels
GA Hepatobiliary and Pancreatic System Open and Laparoscopic Procedures	27	27	No change to HRG number or labels
GB Hepatobiliary and Pancreatic System Endoscopic Procedures	14	14	No change to HRG number or labels
GC Hepatobiliary and Pancreatic System Disorders	24	24	No change to HRG number or labels
HC Spinal Procedures and Disorders	74	74	No change to HRG number or labels
HD Musculoskeletal Disorders	35	35	No change to HRG number or labels
HE Orthopaedic Disorders	84	84	No change to HRG number or labels
HN Orthopaedic Non-Trauma Procedures	111	111	No change to HRG number or labels
HT Orthopaedic Trauma Procedures	87	87	No change to HRG number or labels

Subchapter	C20/21	P19/20	Comment
JA Breast Procedures and Disorders	35	35	No change to HRG number or labels
JB Burns Procedures and Disorders	38	38	No change to HRG number or labels
JC Skin Surgery	12	12	No change to HRG number or labels
JD Skin Disorders	10	10	No change to HRG number or labels
KA Endocrine System Disorders	18	18	No change to HRG number or labels
KB Diabetic Medicine	12	12	No change to HRG number or labels
KC Metabolic Disorders	9	9	No change to HRG number or labels
LA Renal Procedures and Disorders	48	48	No change to HRG number or labels
LB Urological and Male Reproductive System Procedures and Disorders	149	149	No change to HRG number or labels
LD Renal Dialysis for Chronic Kidney Disease	26	26	No change to HRG number or labels
LE Renal Dialysis for Acute Kidney Injury	4	4	No change to HRG number or labels
MA Female Reproductive System Procedures	48	48	No change to HRG number or labels
MB Female Reproductive System Disorders	17	17	No change to HRG number or labels
MC Assisted Reproduction Medicine	11	11	No change to HRG number or labels
NZ Obstetric Medicine	55	55	No change to HRG number or labels
PB Neonatal Disorders	20	20	No change to HRG number or labels

Subchapter	C20/21	P19/20	Comment
PC Paediatric Ear Nose and Throat Disorders	4	4	No change to HRG number or labels
PD Paediatric Respiratory Disorders	24	24	No change to HRG number or labels
PE Paediatric Cardiology Disorders	12	12	No change to HRG number or labels
PF Paediatric Gastroenterology Disorders	17	17	No change to HRG number or labels
PG Paediatric Hepatobiliary Disorders	3	3	No change to HRG number or labels
PH Paediatric Rheumatology Disorders	4	4	No change to HRG number or labels
PJ Paediatric Dermatology Disorders	7	7	No change to HRG number or labels
PK Paediatric Diabetology, Endocrinology and Metabolic Disorders	11	11	No change to HRG number or labels
PL Paediatric Renal Disorders	10	10	No change to HRG number or labels
PM Paediatric Haematological-Oncology Disorders	14	14	No change to HRG number or labels
PN Paediatric Non-Malignant Haematological Disorders	9	9	No change to HRG number or labels
PP Paediatric Ophthalmic Disorders	2	2	No change to HRG number or labels
PQ Paediatric Immune System Disorders	2	2	No change to HRG number or labels
PR Paediatric Nervous System Disorders	22	22	No change to HRG number or labels

Subchapter	C20/21	P19/20	Comment
PT Paediatric Mental Health Disorders	4	4	No change to HRG number or labels
PV Paediatric Trauma Medicine	7	7	No change to HRG number or labels
PW Paediatric Infectious Diseases	15	15	No change to HRG number or labels
PX Paediatric Medicine	46	46	No change to HRG number or labels
RD Diagnostic Imaging Procedures	47	47	No change to HRG number or labels
RN Nuclear Medicine Procedures	69	69	No change to HRG number or labels
SA Haematological Procedures and Disorders	104	104	No change to HRG number or labels
SB Chemotherapy	18	18	No change to HRG number or labels
SC Radiotherapy	30	30	No change to HRG number or labels
SD Specialist Palliative Care	10	10	No change to HRG number or labels
UZ Undefined Groups	1	1	No change to HRG number or labels
VA Multiple Trauma	24	24	No change to HRG number or labels
VB Emergency Medicine	12	12	No change to HRG number or labels
VC Rehabilitation	23	23	No change to HRG number or labels
WD Treatment of Mental Health Patients by Non-Mental Health Service Providers	9	9	No change to HRG number or labels
WF Non-admitted Consultations	8	8	No change to HRG number or labels

Subchapter	C20/21	P19/20	Comment
WH Poisoning, Toxic Effects, Special Examinations, Screening and Other Healthcare Contacts	68	68	No change to HRG number or labels
WJ Infectious Diseases and Immune System Disorders	38	38	No change to HRG number or labels
XA Neonatal Critical Care	6	6	No change to HRG number. HRG label updated to <b>XA05Z Neonatal Critical Care, Neonatology Supported Care</b>
XB Paediatric Critical Care	9	9	No change to HRG number or labels
XC Adult Critical Care	7	7	No change to HRG number or labels
XD High Cost Drugs	58	58	No change to HRG number or labels
YA Neurological Imaging Interventions	11	11	No change to HRG number or labels
YD Thoracic Imaging Interventions	5	5	No change to HRG number or labels
YF Gastrointestinal Imaging Interventions	8	8	No change to HRG number or labels
YG Hepatobiliary and Pancreatic Imaging Interventions	16	16	No change to HRG number or labels
YH Musculoskeletal Imaging Interventions	8	8	No change to HRG number or labels
YJ Breast Imaging Interventions	12	12	No change to HRG number or labels
YL Urological Imaging Interventions	8	8	No change to HRG number or labels
YQ Vascular Open Procedures and Disorders	60	60	No change to HRG number or labels

Subchapter	C20/21	P19/20	Comment
YR Vascular Imaging Interventions	58	58	No change to HRG number or labels