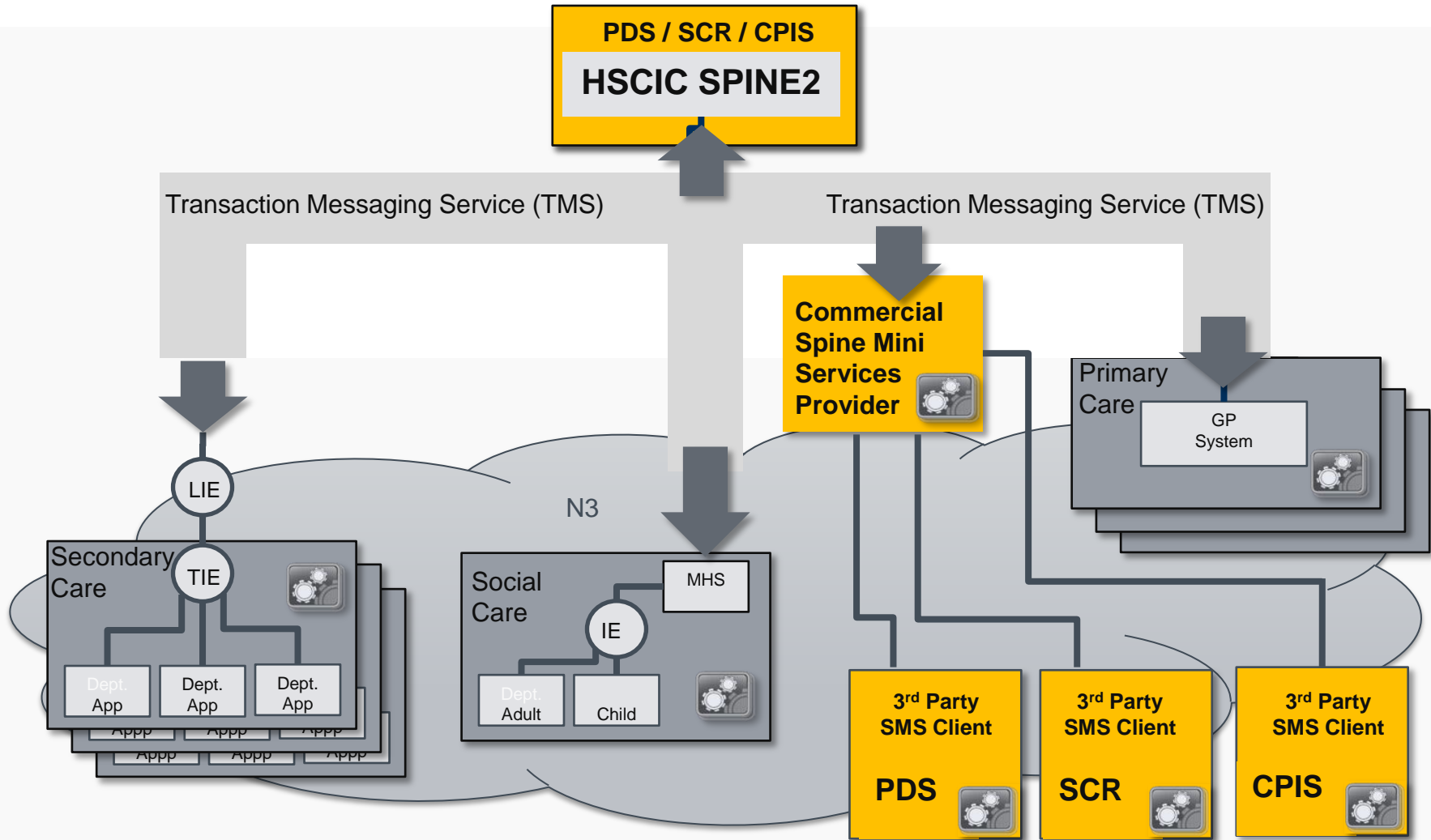


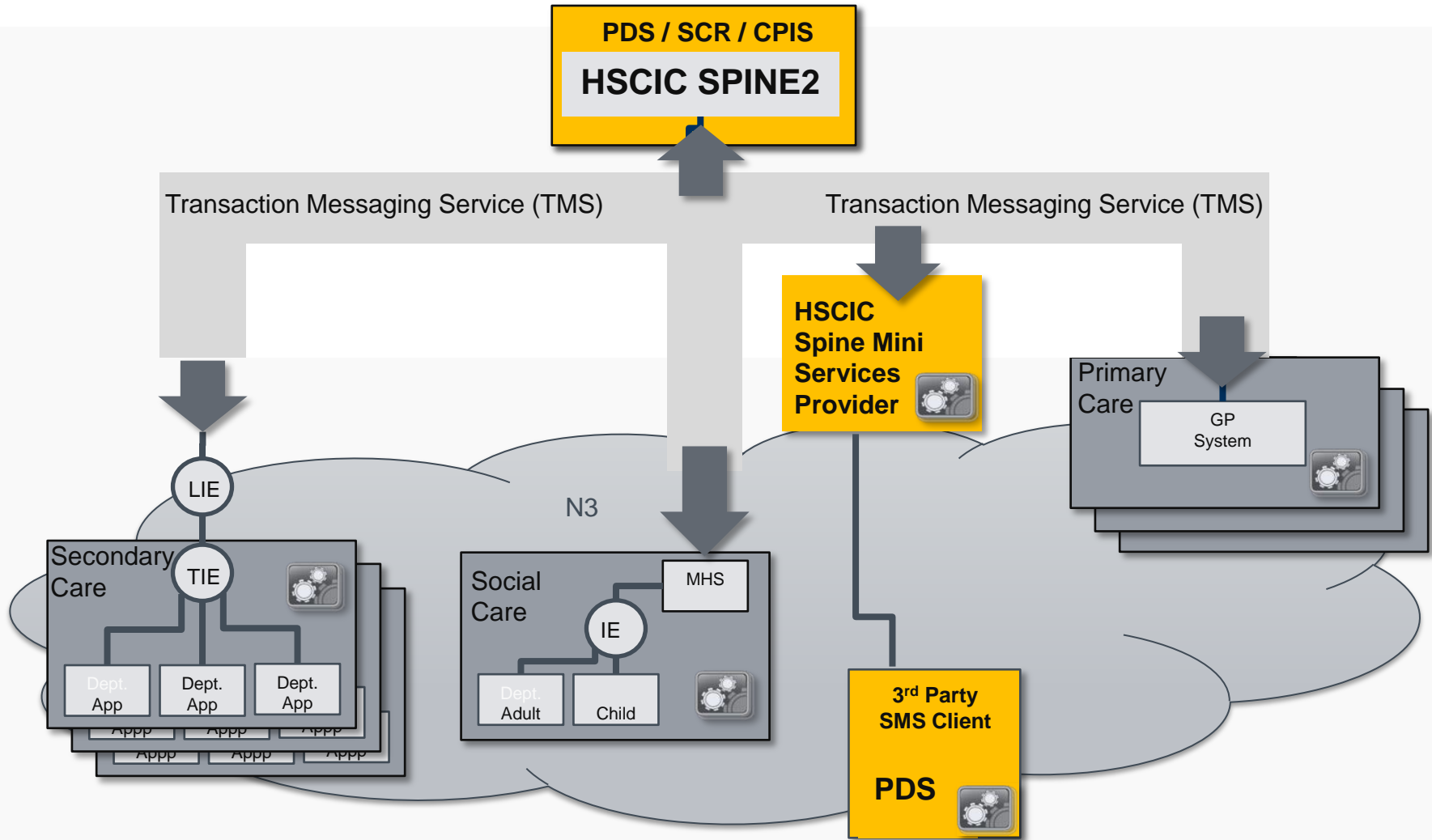
# Spine Mini Services

## Assurance Overview

# Spine Mini-Services Landscape (3rd Party)

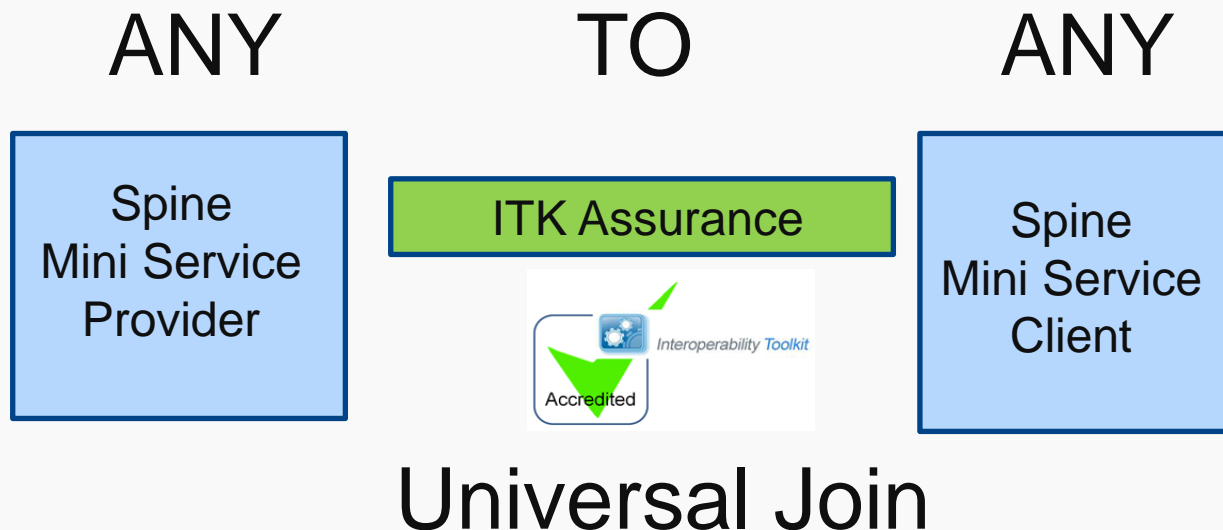


# Spine Mini-Services Landscape (NHS Digital)

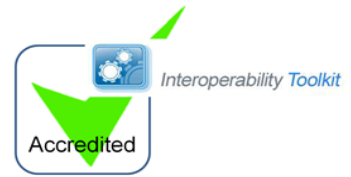


# End to End Assurance

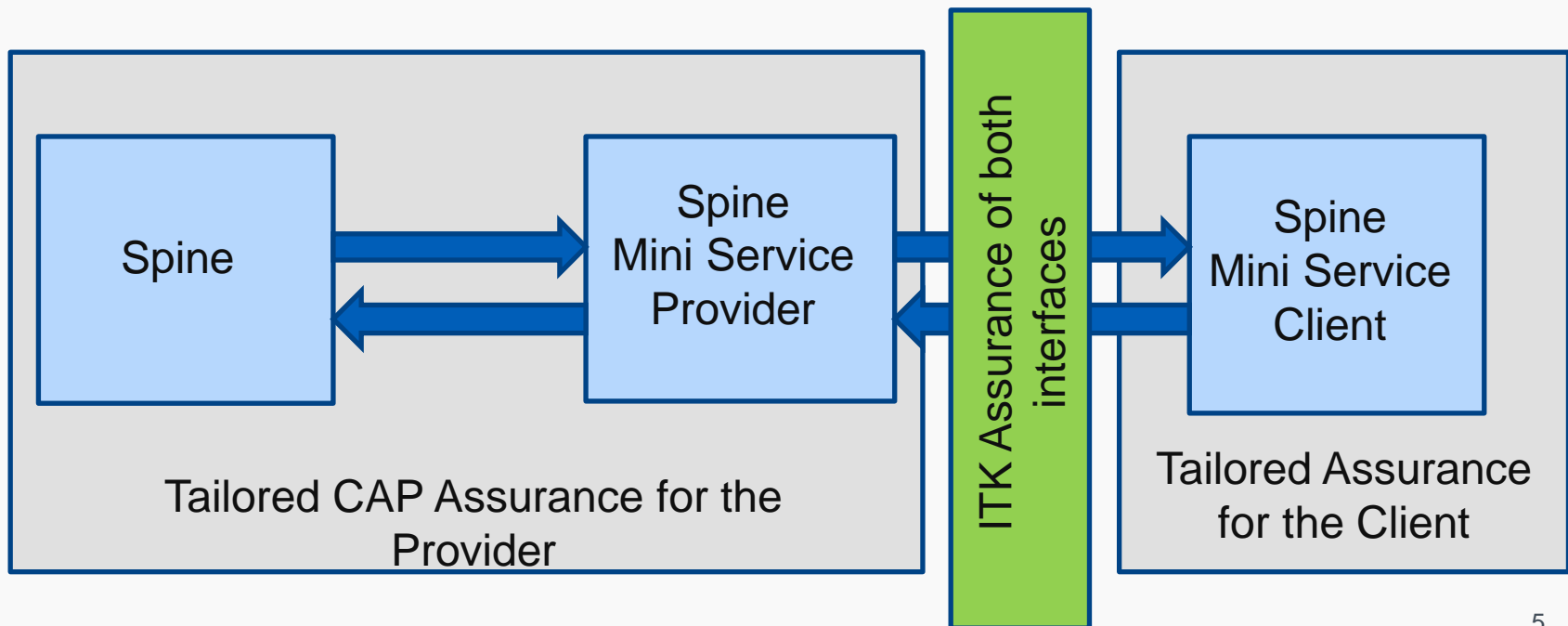
A modular approach to assurance allows the Provider and Client to be assured independently. Once assured this allows **any** provider to be connected to **any** client. As ITK Conformance has assured relevant interfaces against a single reference point the end to end assurance is already 'in place'. ITK conformance acts as a universal join between any SMS Provider and any SMS Client.



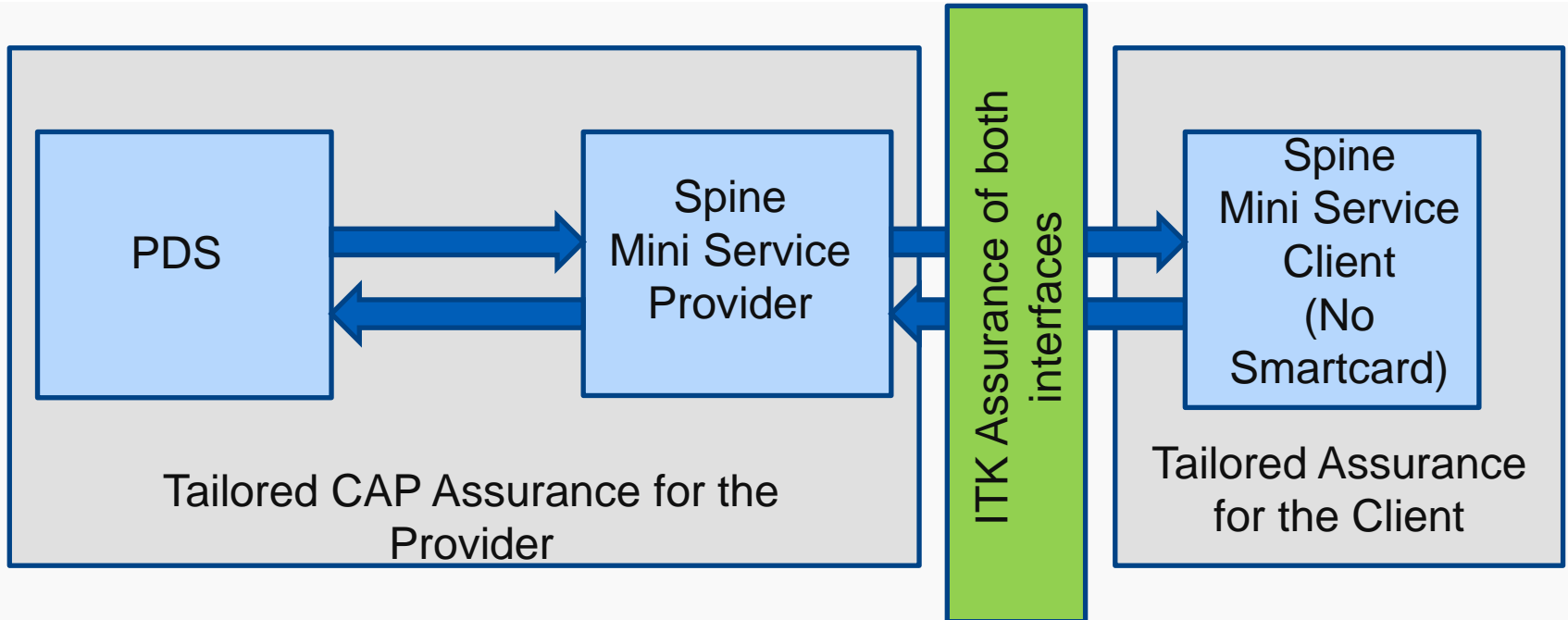
# Assurance of Provider and Client



A modular approach to assurance allows the Provider and Client to be assured independently. ITK assurance of the connecting interfaces enables the ‘end to end’ assurance by using ToolKit Workbench (TKW) as a reference point.



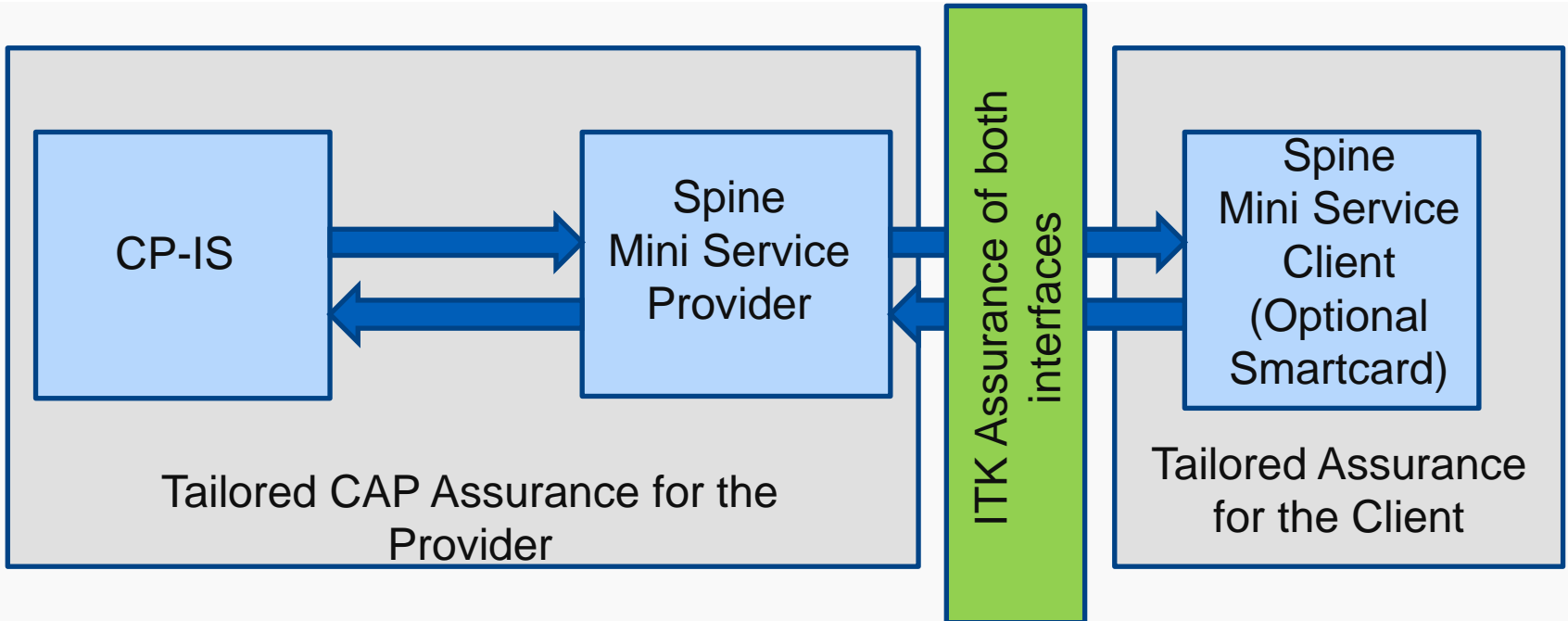
# PDS Spine Mini Services – First of Type



PDS Mini-Service assurance - requires a partner Spine Mini-Service Client. This can be provided by the SMS Provider, or a 3<sup>rd</sup> party.

In addition there is a requirement for a First of Type care providing organisation.

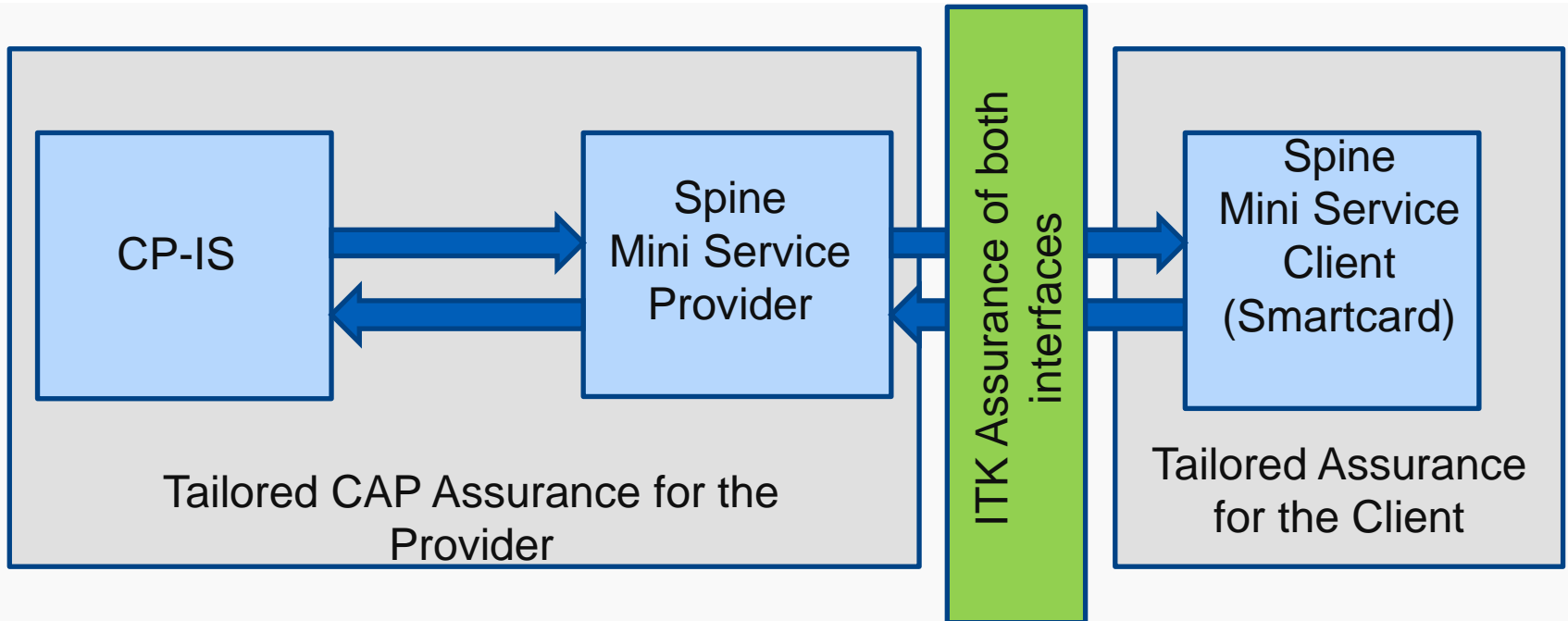
# CP-IS Spine Mini Services – First of Type



CP-IS Mini-Service assurance - requires a partner Spine Mini-Service Client. This can be provided by the SMS Provider, or a 3rd party. There is no requirement on the SMS Provider to already offer PDS mini-services, although a traced NHS number is required.

As with PDS mini-services, there is a requirement for a First of Type care providing organisation.

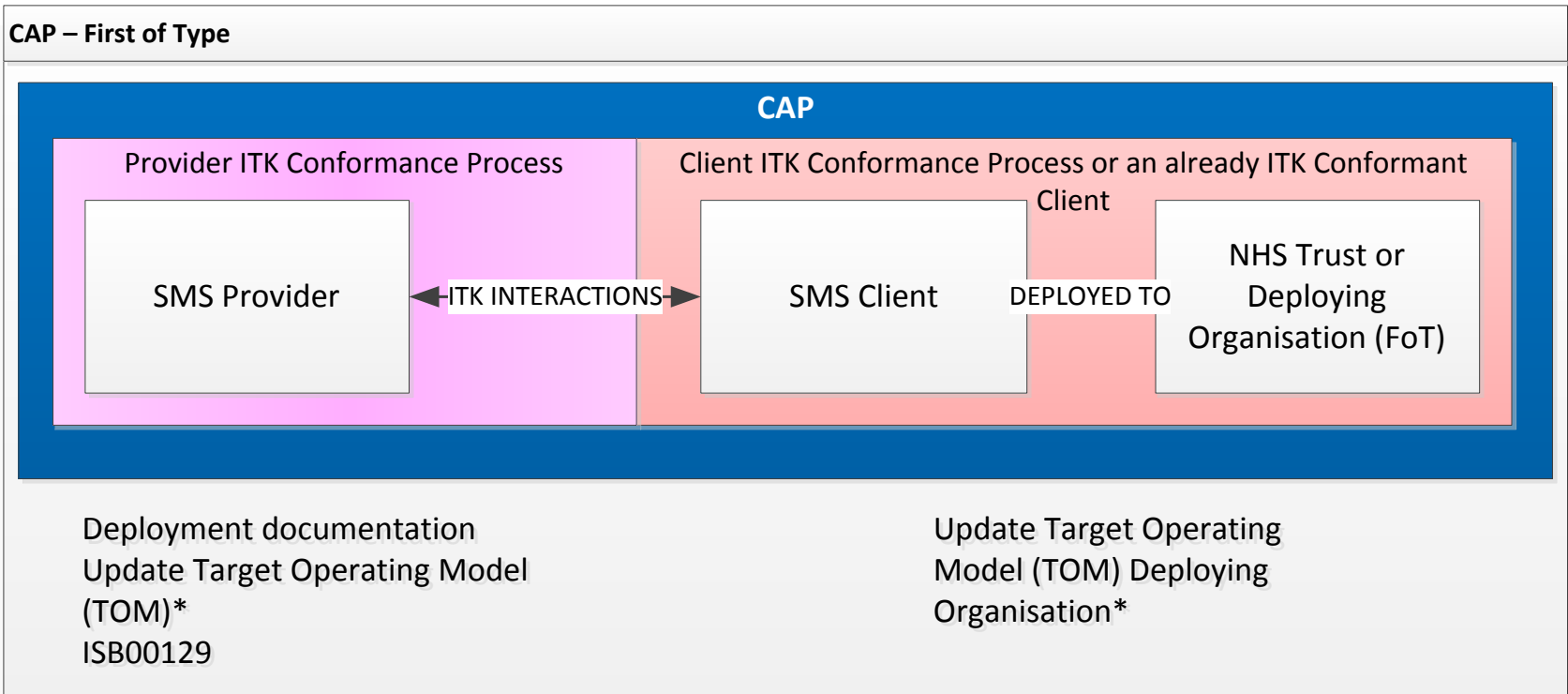
# SCR Spine Mini Services – First of Type



SCR Mini-Service assurance - requires a partner Spine Mini-Service Client. This can be provided by the SMS Provider, or a 3rd party. There is no requirement on the SMS Provider to already offer PDS mini-services, although a traces NHS number is required.

As with other mini-services, there is a requirement for a First of Type care providing organisation.

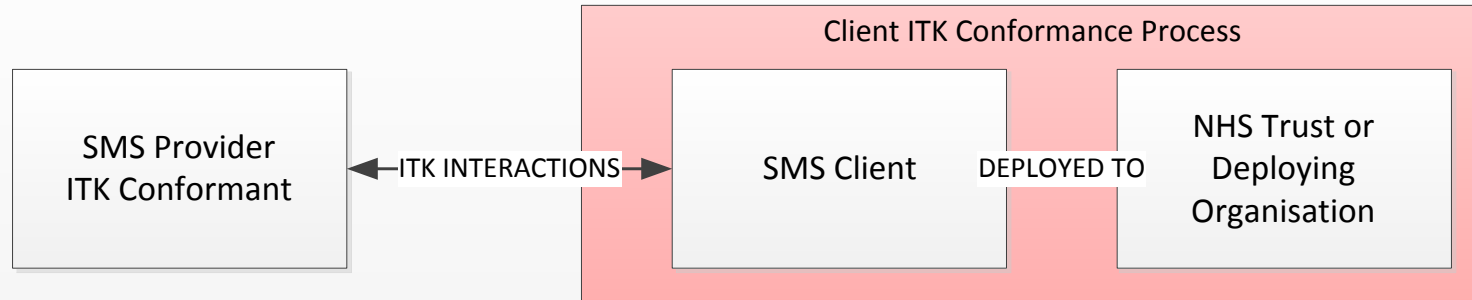
# SCR SMS - First of Type (Under CAP)



When a new SCR Spine Mini Service Providers comes through the assurance process, they do so with a client partner, so end-to-end integration (and associated service aspects) can be assured.

# SCR Post Full Rollout Approval (FRA)

After FRA using a Conformant Provider system



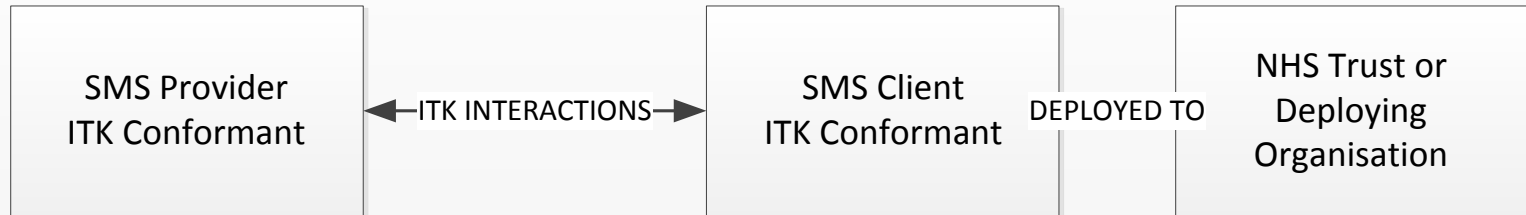
Update Target Operating Model (TOM)\*  
ISB00129

Update Target Operating Model (TOM) Deploying Organisation\*

Post Full Rollout Approval (FRA) new SCR SMS client need to be centrally assured. Note: this is a change from the process for PDS. It is the client supplier gaining conformance. The deploying organisation still retains (as per other Spine Mini Services) the Target Operating Model approach.

# Post FRA – Conformant Provider & Client

For a ITK Conformant Provider and ITK Conformant Client



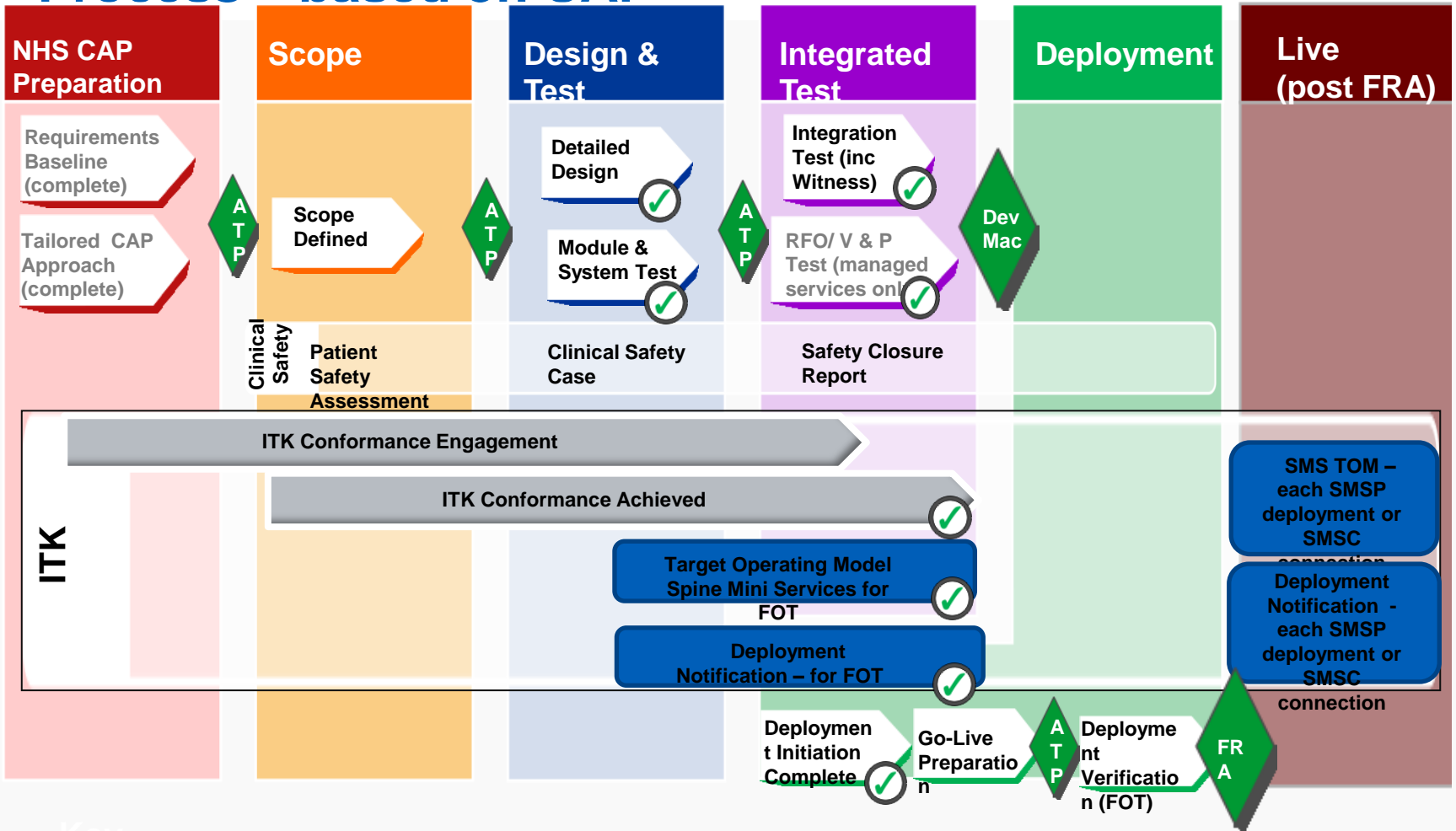
Update Target Operating Model (TOM)\*  
ISB00129

Update Target Operating Model (TOM) Deploying Organisation\*

\* there is only one TOM it is first completed by SMSP and then passed to the SMSC and then the NHS Organisation.

In the scenario where both SMS Provider and SMS Client have gained conformance, deploying organisations must complete a TOM evaluation Spreadsheet.

# Spine Mini Service Provider (SMSP) Assurance Process – based on CAP



## Key

**CAP:** Common Assurance Process  
**ITK:** Interoperability Toolkit

**ATP:** Authority To Proceed  
**TOM:** Target Operating Model

**Dev MAC:** Development Milestone Achieved Certificate (incl. Clinical Authority to Deploy)

**FOT:** First Of Type  
**FRA:** Full Rollout Approval (incl. Clinical Authority to Release)

Review Checkpoint

Denotes SMSP responsibility



[www.digital.nhs.uk](http://www.digital.nhs.uk)

 [@nhsdigital](https://twitter.com/nhsdigital)  
[enquiries@nhsdigital.nhs.uk](mailto:enquiries@nhsdigital.nhs.uk)

0300 303 5678

Information and technology  
for better health and care