



National Cancer Audit Collaborating Centre (NATCAN)

COSD Roadshows January-February 2024

Dr Julie Nossiter, Director of Operations, NATCAN

@NATCAN_news



NATCAN

National Cancer Audit
Collaborating Centre

National Cancer Audit Collaborating Centre (NATCAN)

- Commissioned by the Healthcare Quality Improvement Partnership (HQIP)
- Funded by NHS England and the Welsh Government initially for 3 years



NATCAN aims to:

1. Provide regular, timely evidence to cancer services of variations in E&W
2. Support NHS services to identify reasons for the variation in care and help guide quality improvement initiatives
3. Stimulate improvements in cancer detection, treatment and outcomes for patients, including survival rates

Home of the ten national cancer audits in England & Wales

New cancer audits – contract started October 2022

- Kidney Cancer  **NKCA**
National Kidney Cancer Audit
- Non-Hodgkin Lymphoma  **NNHLA**
National Non-Hodgkin Lymphoma Audit
- Ovarian Cancer  **NOCA**
National Ovarian Cancer Audit
- Pancreatic Cancer  **NPaCA**
National Pancreatic Cancer Audit
- Primary &  **NAoPri**
National Audit of Primary Breast Cancer
- Metastatic Breast Cancer  **NAoMe**
National Audit of Metastatic Breast Cancer



Established cancer audits moved into NATCAN – contract variations

- OG Cancer – June 2023  **NOGCA** | National Oesophago-Gastric Cancer Audit
- Bowel Cancer – June 2023  **NBOCA** | National Bowel Cancer Audit
- Prostate Cancer – July 2023  **NPCA**
National Prostate Cancer Audit
- Lung Cancer – October 2023  **NLCA** | National Lung Cancer Audit



NATCAN: maintain key features

- Close **clinical-methodological collaboration**
- Close links with all **stakeholder groups**
 - Clinical professional bodies
 - NHS commissioners
 - Regulators (CQC)
 - People with lived experience of cancer, charities, public
- **Audit delivery & QI informed by research & development:**
 - Methodological development
 - Clinical epidemiology
 - Health services research



original reports
Patient-Reported Functional Outcomes After Hypofractionated or Conventionally Fractionated Radiation for Prostate Cancer: A National Cohort Study in England
 Julie Nossiter, PhD^{1,2}; Arunan Sujenthiran, MD¹; Thomas E. Cowling, PhD¹; Matthew G. Parry, MBChB, MSc²; Susan C. Charman, MSc¹; Paul Cathcart, MD¹; Noel W. Clarke, MBBS, ChM^{3,4}; Heather Payne, MBBS, MD¹; Jan van der Meulen, PhD¹; and Ajay Aggarwal, MD, PhD^{5*}

EAU
 European Association of Urology
Does Research from Clinical Trials in Metastatic Hormone-sensitive Prostate Cancer Treatment Translate into Access to Treatments for Patients in the "Real World"? A Systematic Review
 Joanna Dodkins^{a,b,†}, Julie Nossiter^{a,b}, Adrian Cook^a, Heather Payne^{a,c}, Noel Clarke^{a,d}, Jan van der Meulen^{a,b}, Ajay Aggarwal^{b,c}

ARTICLE [Check for updates](#)
 Determinants of variation in radical local treatment for men with high-risk localised or locally advanced prostate cancer in England

Matthew G. Parry^{1,2,3}, Jemma M. Boyle^{1,2}, Julie Nossiter², Melanie Morris^{1,2}, Arunan Sujenthiran², Brendan Berry^{1,2}, Paul Cathcart¹, Ajay Aggarwal^{4,5}, Jan van der Meulen^{1,6}, Heather Payne^{6,8} and Noel W. Clarke^{7,8}

Cancer Epidemiology | [Open Access](#) |

Impact of cancer service centralisation on the radical treatment of men with high-risk and locally advanced prostate cancer: A national cross-sectional analysis in England

Matthew G Parry✉, Arunan Sujenthiran, Thomas E Cowling, Julie Nossiter, Paul Cathcart, Noel W Clarke, Heather Payne, Ajay Aggarwal, Jan van der Meulen

THE LANCET
 Oncology

PERSONAL VIEW | VOLUME 22, ISSUE 5, E207-E215, MAY 2021

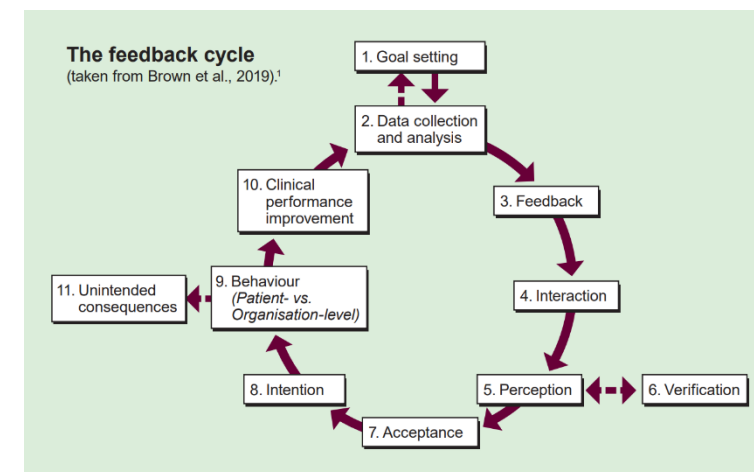
Public reporting of outcomes in radiation oncology: the National Prostate Cancer Audit

Ajay Aggarwal, PhD, Julie Nossiter, PhD, Matthew Parry, PhD, Arunan Sujenthiran, MD, Prof Anthony Zietman, MD, Prof Noel Clarke, ChM, et al. [Show all authors](#)



NATCAN: innovations

- Use of **single resource of linked datasets for all cancer audits**
 - Use of rapid cancer registration data as well as gold-standard registration data
- **More frequent, more timely reporting – quarterly**
- **‘State of the Nation’ reports (10 pages max, 5 recommendations)**
- **Greater focus on Quality Improvement**
 - aiming to ‘close the audit cycle’





NATCAN

National Cancer Audit
Collaborating Centre

NATCAN: timeframe

First year (from Oct 2022)

- Establish **organisational & governance structures**
- Develop NATCAN **communication strategy**
- Creation of **common data access channels**
- Audit **scoping & development**
- Develop NATCAN **QI strategy & planning**

From second year onwards (from Oct 2023)

- **Reporting & feedback** of audit results start (quarterly & annual)
- Design **QI initiatives**
- Roll out of **'full audit cycle' projects**



NATCAN: Current Organisation



NATCAN

National Cancer Audit
Collaborating Centre

HEALTHCARE QUALITY IMPROVEMENT PARTNERSHIP

Clinical Effectiveness Unit-RCSEng

NATIONAL CANCER AUDIT COLLABORATING CENTRE (NATCAN)

NATCAN Board

Chair, HQIP, NHS England, Welsh Government, RCR, Macmillan Cancer Support, NDRS, WCN, RCSEng Patient & Public Group, NATCAN Executive

NATCAN Executive Team

Director of Operations (Julie Nossiter), Clinical Director (Ajay Aggarwal), Director CEU (David Cromwell), Senior Statistician (Kate Walker), Senior Clinical Epidemiologist (Jan van der Meulen)

Centre Project Manager
(Verity Walker)

TECHNICAL ADVISORY
GROUP

CLINICAL REFERENCE /
ADVISORY GROUPS
(one for each cancer audit)

QUALITY IMPROVEMENT
TEAM
(working with all cancer audits)

PATIENT AND CARER
PANELS
(one for each cancer audit)

CEU: NVR & Crane / health services projects

LSHTM: NIHR, MRC funded
health services research

NHSE/ National Disease Registration Service
Digital Health and Care Wales/Wales

Lung cancer	Prostate cancer	Bowel cancer	OG cancer	Breast cancer: Primary	Breast cancer: Metastatic	Pancreatic cancer	Kidney cancer	Ovarian cancer	Non-Hodgkin Lymphoma
<p>Clinical leads: Neal Navani (Respiratory medicine), Doug West (Surgery, SCTS), John Conibear (Oncology, RCR)</p> <p>Senior Methodologists: David Cromwell</p> <p>Statistician/Data Scientist: Adrian Cook, Ella Barber</p> <p>Clinical Fellow: Lauren Dixon</p> <p>Audit Manager: Joanne Boudour</p>	<p>Clinical leads: Ajay Aggarwal (Oncology, BUG), Noel Clarke (Surgery, BAUS)</p> <p>Senior Methodologists: Jan van der Meulen, Tom Cowling</p> <p>Statistician/Data Scientist: Adrian Cook, Emily Mayne</p> <p>Clinical Fellow: Joanna Dodkins</p> <p>Audit Manager: Cressida Miller, Marina Parry</p>	<p>Clinical leads: Mike Braun (Oncology), Nicola Fearnhead (Surgery, ACPGBI)</p> <p>Senior Methodologists: Jan van der Meulen, Kate Walker</p> <p>Clinical Fellow: Adil Rashid</p> <p>Data Scientists: Angela Kuryba; Helen Blake</p> <p>Audit Manager: Karen Darley</p>	<p>Clinical leads: Nigel Trudgill (Gastroenterology, BSG), James Gossage (Surgery, AUGIS), Tom Crosby/Betsan Thomas</p> <p>Senior Methodologist: David Cromwell/Methodologist: Mel Gannon</p> <p>Clinical Fellows: Jemma Boyle, Sarah Blacker</p> <p>Data Scientist: Christine Delon</p> <p>Audit Manager: Karen Darley</p>	<p>Clinical leads: David Dodwell (Oncology, UKBCG), Keiran Horgan (Surgery, ABS)</p> <p>Senior Methodologist: David Cromwell/Methodologist: Mel Gannon</p> <p>Clinical Fellows: Jemma Boyle, Sarah Blacker</p> <p>Data Scientist: Christine Delon</p> <p>Audit Manager: Jibby Medina</p>	<p>Clinical leads: David Dodwell (Oncology, UKBCG), Keiran Horgan (Surgery, ABS), Mark Verill (Medical Oncology, UKBCG)</p> <p>Senior Methodologist: David Cromwell/ Methodologist: Mel Gannon</p> <p>Data Scientist: Christine Delon</p> <p>Audit Manager: Jibby Medina</p>	<p>Clinical leads: Nigel Trudgill (Gastroenterology, BSG), Andrew Smith (Surgery, AUGIS), Ganesh Radhakrishna (RCR)</p> <p>Senior Methodologist: David Cromwell/ Methodologist: Min Hae Park</p> <p>Clinical Fellow: joins 2024 Data Scientist: Amanda McDonell</p> <p>Audit Manager: Vikki Hart</p>	<p>Clinical leads: Amit Bahl (Oncology, BUG), Grant Stewart (Surgery, BAUS)</p> <p>Senior Methodologists: Jan van der Meulen, Tom Cowling</p> <p>Clinical Fellow: Suzi Nallamilli</p> <p>Data Scientist: Emily Mayne</p> <p>Audit Manager: Cressida Miller, Marina Parry</p>	<p>Clinical leads: Sudha Sunder (Surgery, BGCS), Agnieszka Michael (Medical Oncology, BGCS)</p> <p>Senior Methodologists: Jan van der Meulen, Ipek Gurok Urganci</p> <p>Clinical Fellow: Georgia Zachou</p> <p>Methodologist: Andrew Hutchings</p> <p>Audit Manager: Joanne Boudour</p>	<p>Clinical leads: Cathy Burton (Haematology, BSH)</p> <p>David Cutter (Oncology, BSH)</p> <p>Senior Methodologists: Kate Walker,</p> <p>Methodologist: Lu Han</p> <p>Clinical Fellow: joins 2024</p> <p>Data Scientist: Ella Barber</p> <p>Audit Manager: Vikki Hart</p>

ABS, Association of Breast Surgery; ACPGBI, Association of Coloproctology of Great Britain and Ireland; AUGIS, Association of Upper Gastrointestinal Surgeons; BAUS, British Association of Urological Surgeons; BSG, British Society of Gastroenterology; BSH, British Society of Haematology; BUG, British Uro-oncology Group; CEU, Clinical Effectiveness Unit; HQIP, Healthcare Quality Improvement Partnership; LSHTM, London School of Hygiene & Tropical Medicine; MRC, Medical Research Council; NHSE, National Health Service England; NIHR, National Institute for Health and Care Research; NVR, National Vascular Registry; UKBCG, UK Breast Cancer Group; RCR, Royal College of Radiologists; RCSEng, Royal College of Surgeons of England; SCTS, Society for Cardiothoracic Surgery.



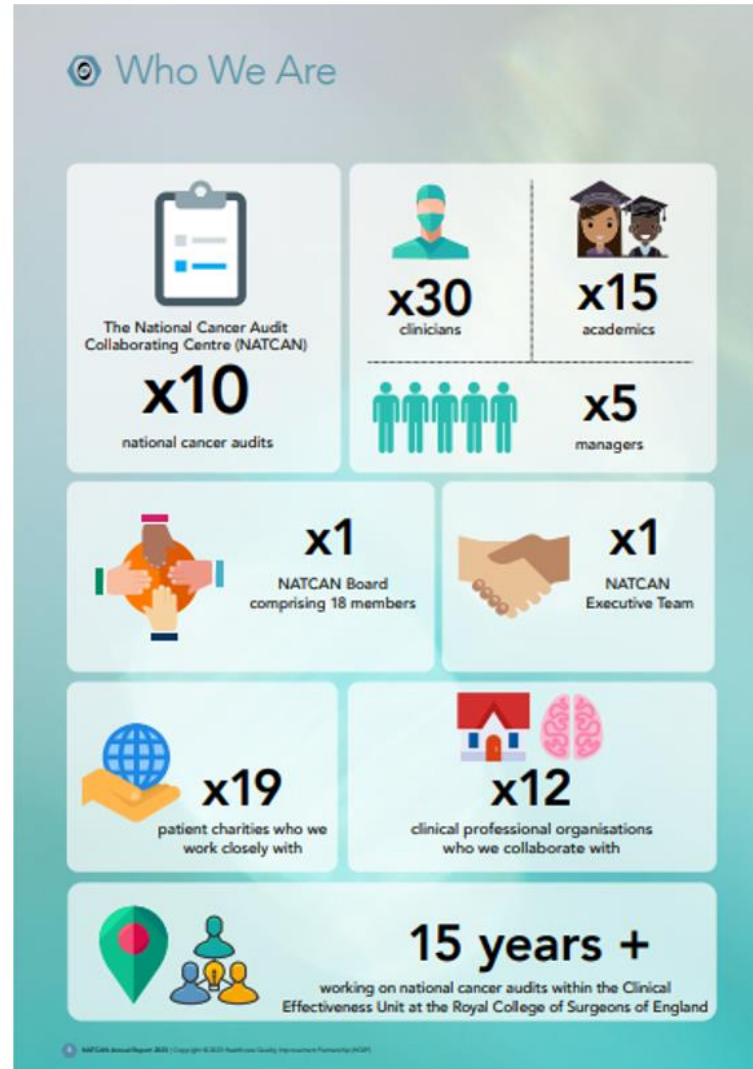
NATCAN Clinical Director

- **Develop the clinical strategic direction** of NATCAN to ensure it engages effectively at the interface between cancer service performance assessment, methodological development, and national initiatives supporting QI and implementation activities.
- **Act as an ambassador**, supporting dialogue with the wider NHS cancer care community and with NHS commissioners and providers, especially in the context of QI and implementation.



Professor Ajay Aggarwal, Consultant Clinical Oncologist at Guy's & St Thomas' NHS Trust, London and Associate Professor at LSHTM.

- Clinical Lead for the NPCA, as part of which he led the development and delivery of the first ever national hospital outcome reporting programme for radiotherapy.
- He is a passionate advocate for driving improvements in the quality of NHS cancer services across the disease spectrum, from diagnosis to treatment and longer-term survivorship.
- His main research areas are performance assessment of cancer care, health system design, and Global Health.
- Formal announcement w.c 18.09.23, started role 01.10.23



Develop NATCAN communication strategy

www.NATCAN.org.uk



NATCAN

National Cancer Audit
Collaborating Centre



[About us](#) [FAQs](#) [News and Views](#) [Contact us](#)

[The Centre](#)

[Audits](#)

[Quality Improvement](#)



Welcome to NATCAN - the National
Cancer Audit Collaborating Centre.

[What is NATCAN?](#)



Develop NATCAN communication strategy

NATCAN@rcseng.ac.uk

[@NATCAN_news](#)

The Centre

Explaining what NATCAN is and what it does



NATCAN

National Cancer Audit
Collaborating Centre

What is NATCAN?

The National Cancer Audit Collaborating Centre was established as a new national centre of excellence in October 2022 with the aim of strengthening NHS cancer services by looking at treatments and patient outcomes across the country.

The Centre was commissioned for an initial three-year period by the Healthcare Quality Improvement Partnership, on behalf of NHS England and the Welsh government.



Peter Johnson, National Clinical Director for cancer at NHS England

www.NATCAN.org.uk

[@NATCAN_news](https://twitter.com/NATCAN_news)

National Pancreatic Cancer Audit

Patient charities and support groups have been calling for a national pancreatic cancer audit for a long time. They will play a crucial role in helping us determine which questions need to be addressed most urgently, and what areas of new research might be most beneficial.



Dr Georgia Papacleovoulou, Health Intelligence and Improvement Lead, Pancreatic Cancer UK



Richard Murphy, Pancreatic Cancer patient / Carer Representative

Individual patients and carers are also really important to the audit process. We want to hear a wide range of opinions and concerns, both from patients and professionals, The objective is to produce better results for people diagnosed with pancreatic cancer, to try to allow them to live longer, healthier lives.

[Contact Us](#)

[Resources](#)

NATCAN@rcseng.ac.uk

[@NATCAN_news](#)

Standalone PPI Forum for each audit

People with lived experience of cancer help with:

- Identifying audit QI strategy and priorities
- Interpreting audit findings
- Disseminating results

Contact database developed with your support – thank you!

If you would like to be added email natcan@rcseng.ac.uk or individual audits



News and Views

News about data submission deadlines, publications, announcements.

<h4>NKCA</h4> <p>National Kidney Cancer Audit</p> <p>NKCA Clinical Effectiveness Unit Royal College of Surgeons in England 25 St Andrews Place London WC2A 3PH E: nkca@rcseng.ac.uk T: 020 7611 8855 W: www.nkca.org.uk</p>	<h4>NAOPri</h4> <p>National Audit of Primary Breast Cancer</p> <p>NAOPri Clinical Effectiveness Unit Royal College of Surgeons in England 25 St Andrews Place London WC2A 3PH E: naopri@rcseng.ac.uk T: 020 7611 8855 W: www.naopri.org.uk</p>	<h4>NOCA</h4> <p>National Ovarian Cancer Audit</p> <p>NOCA Clinical Effectiveness Unit Royal College of Surgeons in England 25 St Andrews Place London WC2A 3PH E: ovarian@rcseng.ac.uk T: 020 7611 8855 W: www.natcan.org.uk</p>	<h4>NATCAN</h4> <p>National Cancer Audit Collaborating Centre</p> <p>NATCAN Clinical Effectiveness Unit Royal College of Surgeons in England 25 St Andrews Place London WC2A 3PH E: natcan@rcseng.ac.uk T: 020 7611 8855 W: www.natcan.org.uk</p>	<h4>NNHLA</h4> <p>National Non-Hodgkin Lymphoma Audit</p> <p>NNHLA Clinical Effectiveness Unit Royal College of Surgeons in England 25 St Andrews Place London WC2A 3PH E: nnhla@rcseng.ac.uk T: 020 7611 8855 W: www.natcan.org.uk</p>	<h4>NAoMe</h4> <p>National Audit of Metastatic Breast Cancer</p> <p>NAoMe Clinical Effectiveness Unit Royal College of Surgeons in England 25 St Andrews Place London WC2A 3PH E: naome@rcseng.ac.uk T: 020 7611 8855 W: www.natcan.org.uk</p>	<h4>NPaCa</h4> <p>National Pancreatic Cancer Audit</p> <p>NPaCa Clinical Effectiveness Unit Royal College of Surgeons in England 25 St Andrews Place London WC2A 3PH E: pancreatic@rcseng.ac.uk T: 020 7611 8855 W: www.natcan.org.uk</p>
<h4>NKCA Newsletter, Summer 2023</h4> <p>Want to hear more? The NKCA is part of the National Cancer Audit Collaborating Centre (NATCAN). If you want to find out more about NATCAN visit our website. If you would like to receive regular updates send an email natcan@rcseng.ac.uk</p> <p>Announcing the launch of NKCA We are excited to announce the launch of the new National Kidney Cancer Audit (NKCA) as part of the new National Cancer Audit Collaborating Centre (NATCAN) led by the Clinical Effectiveness Unit at the Royal College of Surgeons in October 2022. Commissioned by the Healthcare Quality Improvement Partnership on behalf of NHS England and the Welsh Government, NATCAN will be a new national centre of excellence in cancer audits.</p> <p>Building on the previous work of the Kidney Cancer UK Accredited Kidney Cancer UK Quality Performance Audit of kidney cancer services in England - Figures 1 and 2), the audit aims to support NHS services to increase the consistency of services to patients and help guide quality improvement initiatives and stimulate quality improvements leading to better outcomes for patients.</p> <p>Introducing the NKCA Team NKCA Clinical Leads Prof David Stewart - Clinical Lead University of Liverpool Prof Anne Bath - Consultant Urology, University Hospital, Newcastle Prof Ian van der Meulen - Consultant Urology, University Hospital, Newcastle</p>	<h4>NAOPri Newsletter, Summer 2023</h4> <p>Want to hear more? The NAOPri is part of the National Cancer Audit Collaborating Centre (NATCAN). If you want to find out more about NATCAN visit our website. If you would like to receive regular updates send an email natcan@rcseng.ac.uk</p> <p>Explore the new website and hear from Prof. Kieran Morgan, Clinical co-lead for NAOPri The National Cancer Audit Collaborating Centre (NATCAN) website has been launched. Visit the web page for NAOPri, and our sister audit NAOPri, the National Audit of Metastatic Breast Cancer. The website offers a range of resources, including the new website and hear from Prof. Kieran Morgan, Clinical co-lead for NAOPri. Kieran, who talks about the exciting initiative, which will work closely with the audit of metastatic breast cancer, and will build on the previous work done by the NAOPri.</p> <p>Dr Mark Veritt, Clinical co-lead (Medical Oncology) for the NAOPri and NAoMe, commented... "The commissioning and launch of the National Audit of Primary Breast Cancer (NAOPri) and the National Audit of Metastatic Breast Cancer (NAoMe) are exciting initiatives that will undoubtedly help to improve the care we offer to patients with breast cancer across England and Wales."</p>	<h4>NOCA Newsletter, Summer 2023</h4> <p>Want to hear more? The NOCA is part of the National Cancer Audit Collaborating Centre (NATCAN). If you want to find out more about NATCAN visit our website. If you would like to receive regular updates send an email natcan@rcseng.ac.uk</p> <p>1. Announcing the launch of NOCA We are excited to announce the launch of the new National Ovarian Cancer Audit (NOCA) as part of the new National Cancer Audit Collaborating Centre (NATCAN) led by the Clinical Effectiveness Unit at the Royal College of Surgeons in October 2022. Commissioned by the Healthcare Quality Improvement Partnership on behalf of NHS England and the Welsh Government, NATCAN will be a new national centre of excellence in cancer audits. Building on the previous work of the Ovarian Cancer UK Quality Performance Audit, the audit aims to support NHS services to increase the consistency of services to patients and help guide quality improvement initiatives and stimulate quality improvements leading to better outcomes for patients.</p> <p>2. Introducing our clinical leads We are delighted to have leading clinicians and experts in the field of ovarian cancer, Prof Sarah Jordan, Professor of Gynaecological Oncology and Professor of Obstetrics and Gynaecology, University of Liverpool, and Prof. John Garside, Consultant in Gynaecological Cancer, University of Liverpool, as our clinical leads. The NOCA has access to the Gold Standard dataset and report cancer registration (RCR) and will be building on the important findings from the National Ovarian Cancer Quality Audit. This will help patients, cancer, researchers, and the clinical community understand how we can do better.</p> <p>3. Data A guiding principle for NOCA is to keep the burden of data collection to a minimum by using existing national datasets, such as Cancer Registration Data, and Hospital Episode Statistics. The first reports will be published in 2024. To find out more visit the audit page on our website.</p>	<h4>NATCAN Newsletter, Summer 2023</h4> <p>What is NATCAN? NATCAN is a new national centre of excellence that will support us across the care and treatment of patients who are diagnosed with and treated for cancer in England and Wales. Part of the Healthcare Quality Improvement Partnership (HQIP), on behalf of NHS England and the Welsh Government, NATCAN will be a new national centre of excellence in cancer audits. Building on the previous work of the Ovarian Cancer UK Quality Performance Audit, the audit aims to support NHS services to increase the consistency of services to patients and help guide quality improvement initiatives and stimulate quality improvements leading to better outcomes for patients.</p> <p>What progress have we made? We are pleased to be leading the way and excited to share updates with you. Since the 1 October 2022, we have been working hard to set up NATCAN's governance and infrastructure. This includes the new team including our Clinical Leads and in place and work has begun on developing new cancer audits. Our new team, including our Clinical Leads and in place and work has begun on developing new cancer audits. Our new team, including our Clinical Leads and in place and work has begun on developing new cancer audits.</p> <p>How are patient data being collected? The audits in NATCAN, similar to the existing audits, will use national datasets to collect clinical data. The cancer audits will use the primary care datasets from cancer patients, the National Disease Registration Service (NDRS), and the Wales Cancer Registration (WCR) and the Welsh Government. Each NATCAN audit will collect a minimum dataset in the Autumn of 2023, which hospitals can check, using completed and submitted to NATCAN in the Wales Cancer Network.</p> <p>Want to find out more? Visit our new website to find out more about our audit, the National Cancer Audit Collaborating Centre (NATCAN) and our new Clinical Leads. If you are interested in receiving regular updates about our centre and the progress of our audits, send us an email and we will add you to our contact database.</p>	<h4>NNHLA Newsletter, Summer 2023</h4> <p>Want to find out more? The NNHLA is part of the National Cancer Audit Collaborating Centre (NATCAN). If you want to find out more about NATCAN visit our website. If you would like to receive regular updates send an email natcan@rcseng.ac.uk</p> <p>Announcing the launch of NNHLA We are excited to announce the launch of the new National Non-Hodgkin Lymphoma Audit (NNHLA) as part of the new National Cancer Audit Collaborating Centre (NATCAN) led by the Clinical Effectiveness Unit at the Royal College of Surgeons in October 2022. Commissioned by the Healthcare Quality Improvement Partnership on behalf of NHS England and the Welsh Government, NATCAN will be a new national centre of excellence in cancer audits. Building on the previous work of the Ovarian Cancer UK Quality Performance Audit, the audit aims to support NHS services to increase the consistency of services to patients and help guide quality improvement initiatives and stimulate quality improvements leading to better outcomes for patients.</p> <p>Our data use In the other national audits, the NNHLA will not collect clinical data and instead will utilize nationally reported forms of data from cancer patients to the National Disease Registration Service (NDRS). For England, the NNHLA has access to the Gold Standard dataset and report cancer registration (RCR) and will be building on the important findings from the National Ovarian Cancer Quality Audit. This will help patients, cancer, researchers, and the clinical community understand how we can do better.</p> <p>Our Clinical Leads The NNHLA is supported by the British Society of Haematology, who are delighted to have two experienced Clinical Leads, as part of our Project Team: - Dr David Carter - Consultant Clinical Oncologist, Royal Free Hospital, London - Dr Cathy Burton - Consultant Haematologist, Newcastle General Hospital, Newcastle</p>	<h4>NAoMe Newsletter, Summer 2023</h4> <p>Want to hear more? The NAoMe is part of the National Cancer Audit Collaborating Centre (NATCAN). If you want to find out more about NATCAN visit our website. If you would like to receive regular updates send an email natcan@rcseng.ac.uk</p> <p>Explore the new website and hear from Dr David Dowell, Clinical co-lead for NAoMe The National Cancer Audit Collaborating Centre (NATCAN) website has been launched. Visit the web page for NAoMe, and our sister audit NAoMe, the National Audit of Metastatic Breast Cancer. The website offers a range of resources, including the new website and hear from Dr David Dowell, Clinical co-lead for NAoMe. David, who talks about the exciting initiative, which will work closely with the audit of metastatic breast cancer, and will build on the previous work done by the NAOPri.</p> <p>Dr Mark Veritt, Clinical co-lead (Medical Oncology) for the NAOPri and NAoMe, commented... "The commissioning and launch of the National Audit of Primary Breast Cancer (NAOPri) and the National Audit of Metastatic Breast Cancer (NAoMe) are exciting initiatives that will undoubtedly help to improve the care we offer to patients with breast cancer across England and Wales."</p>	<h4>NPaCa Newsletter, Summer 2023</h4> <p>Want to hear more? The NPaCa is part of the National Cancer Audit Collaborating Centre (NATCAN). If you want to find out more about NATCAN visit our website. If you would like to receive regular updates send an email natcan@rcseng.ac.uk</p> <p>Announcing the launch of NPaCa We are excited to announce the launch of the new National Pancreatic Cancer Audit (NPACA) as part of the new National Cancer Audit Collaborating Centre (NATCAN) led by the Clinical Effectiveness Unit at the Royal College of Surgeons in October 2022. Commissioned by the Healthcare Quality Improvement Partnership on behalf of NHS England and the Welsh Government, NATCAN will be a new national centre of excellence in cancer audits. Building on the previous work of the Ovarian Cancer UK Quality Performance Audit, the audit aims to support NHS services to increase the consistency of services to patients and help guide quality improvement initiatives and stimulate quality improvements leading to better outcomes for patients.</p> <p>Introducing our Clinical Leads Our multidisciplinary audit includes two highly experienced Clinical Leads, with expertise in pancreatic cancer, Prof. Nigel Topley - Consultant, Newcastle General Hospital, Newcastle and Prof. Andrew Smith - Consultant General Surgeon, Leeds Teaching Hospital.</p>

<h4>National Kidney Cancer Audit @NKCA_NATCAN - Oct 6</h4> <p>How will the National Kidney Cancer Audit help me as a patient?</p> <p>More answers to questions you may have about the Audit are available on the natcan.org.uk website. www.natcan.org.uk</p> <p>@natcan</p> <p>How will NATCAN help me as a patient? The quality patient data collected about the services provided by the audit will be different from other national audits. The audit will use existing national datasets, such as Cancer Registration Data, and Hospital Episode Statistics. The first reports will be published in 2024. To find out more visit the audit page on our website.</p>	<h4>NAOPri @NAOPri_news - Sep 5</h4> <p>Do you know how NAOPri will collect patient data?</p> <p>The NAOPri will use existing data collected by national organisations in England & Wales @NHSEngland @WalesCancerNet</p> <p>See FAQ #7 on the National Cancer Audit Collaborating Centre @NATCAN_news website</p> <p>@naopri</p>	<h4>National Ovarian Cancer Audit @NOCA_NATCAN - Sep 14</h4> <p>Introducing Ipek Guro-Urganci, NOCA Senior Methodologist @BGCS.org @OvarianCancerUK @TargetOvarian @NATCAN_News @AgMichael @sundar_sudha</p> <p>Meet the Team! Introducing Ipek Guro-Urganci, NOCA Senior Methodologist Ipek Guro-Urganci is an Associate Professor in the Department of Health Research and Policy at the London School of Hygiene & Tropical Medicine. She is an experienced epidemiologist and a methodologist with a research focus on improving the quality of health care for women across the life course.</p>	<h4>National Cancer Audit Collaborating Centre @NATCAN_news - Aug 21</h4> <p>Collaborative audits led by experts Asking the right questions, using the right methods Involving stakeholders for excellence</p> <p>Learn more: bit.ly/3K5Tcu</p> <p>#NATCAN @RCSSNews @LSHTM @HQIP @NHSEngland</p>	<h4>@NNHLA_NATCAN @NNHLA_NATCAN - Sep 30</h4> <p>I am delighted to see a National Audit in Non-Hodgkin Lymphoma being undertaken and know that it will provide an important understanding of patient treatments and outcomes across the country." @BloodCancerUK @LymphomaAction</p> <p>Having had Blood Cancer Awareness month is an important opportunity to raise awareness of blood cancers, including lymphomas. As a lymphoma clinical oncologist with 18 years' experience, my role involves supporting patients with all types of lymphoma (including Hodgkin lymphoma) and in a day-to-day, I regularly see how important it is to support those diagnosed with lymphoma, and to involve patients and their families, the highest priority for us. I am delighted to see a National Audit in Non-Hodgkin Lymphoma being undertaken and know that it will provide an important understanding of patient treatments and outcomes across the country." @BloodCancerUK @LymphomaAction</p>	<h4>NAoMe @NAoMe_news - Sep 21</h4> <p>Do you know how NAoMe patient data will be collected?</p> <p>The NAoMe will use existing data collected by national organisations in England & Wales @NHSEngland @WalesCancerNet</p> <p>See FAQ #7 on the National Cancer Audit Collaborating Centre @NATCAN_news website</p> <p>@naome</p>	<h4>National Pancreatic Cancer Audit @NPACA_NATCAN - Sep 14</h4> <p>We work closely with patients & patient charities, to help us to produce better results for people diagnosed with pancreatic cancer. Listen to what @PancCancerUK has to say about the audit.</p> <p>@pancreaticuk</p> <p>youtube.com/ RichardMurphy_PancreaticCancerUK</p>
---	--	--	--	---	--	--

Creation of common data access channels

- Use of national (existing & linked) datasets only
- Single, data application in each country

England datasets

National Cancer Registration (rapid & gold-standard)

Cancer Outcomes and Services Dataset (COSD)

Hospital Episode Statistics (HES)

Systemic Anti-Cancer Therapy (SACT) dataset

National Radiotherapy Dataset (RTDS)

Mortality data - Office for National Statistics (ONS)

Medicines Dispensed in Primary Care (NHSBSA)

Somatic Molecular Testing Dataset

Cancer Waiting Times (CWT)

Diagnostic Imaging Dataset (DIDS)

National Cancer Patient Experience Survey

NDRS

Leeds Production Team (LPT)



NATCAN

National Cancer Audit
Collaborating Centre

Wales datasets

CaNISC or Cancer Information System

?? Cancer Registration data

Patient Episode Database for Wales (PEDW)

Radiotherapy Data available in Canisc

Mortality data - Office for National Statistics (ONS)



@NATCAN_news

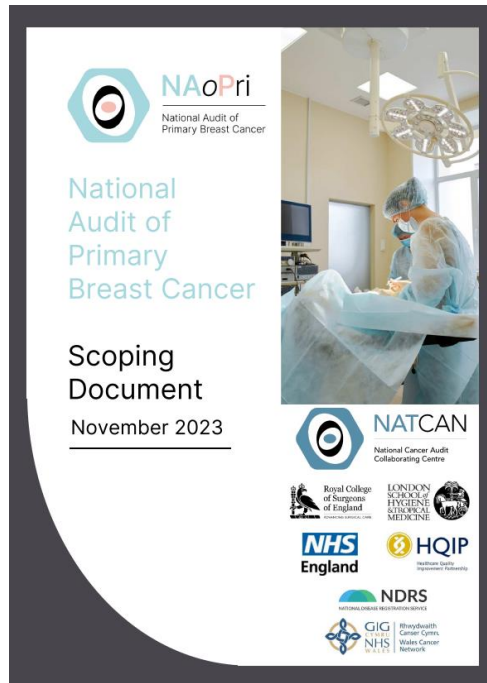


Audit scoping and healthcare improvement planning

- **Common** approach where possible, learning across audits in NATCAN
- Need to **adapt** to needs of individual audit and listen to **stakeholders**
- For new audits **initial** scopes published (with 5 QI goals) – will need to evolve
 - NEXT develop further into Healthcare Improvement Plan (with 10 performance indicators)
- Timeline for **new audits**:
 - Scoping work and document, with 5 QI goals **May-Sep 2023**
 - Data receipt – rapid + linked data **Oct 2023**
 - Data receipt – gold + linked data **Jan 2024**
 - Development and validation of indicators **Oct 2023 - Apr 2024**
 - Healthcare Improvement Plan performance indicators **End Apr 2024** including 10
 - Further development and refinement of indicators **ongoing**



NATCAN Scoping Reports 2023 – published 30.11.23



NATCAN publishes the scope and quality improvement priorities for each cancer audit.



30.11.23

The National Cancer Audit Collaborating Centre (NATCAN) will strengthen NHS cancer services by providing information on the care and treatment of patients diagnosed with cancer, so they can deliver improvements in the quality of care to patients, from diagnosis to treatment and longer-term survival.

NATCAN includes new national cancer audits in breast cancer (primary and metastatic), ovarian, pancreatic, non-Hodgkin lymphoma and kidney cancer. During the Summer of 2023, we carried out an exercise to design the scope of the new audits, collaborating closely with professional groups, data partners, patient charities and patients to ensure we ask the right questions about cancer care and treatment. The established audits in prostate, bowel and oesophago-gastric cancer, which joined NATCAN this summer, also carried out a scoping exercise to define their future direction.

The scoping documents published today (see links below) identify explicit quality improvement (QI) priorities aiming to improve cancer care and outcomes that will ultimately lead to significant patient benefits.

We are thankful to everyone who contributed to this work and look forward to continuing to work collaboratively as we build healthcare improvement plans around clinically relevant and methodologically robust performance indicators that will be reported in 2024.

'New' audits:

- National Kidney Cancer Audit (NKCA)
- National Audit of Metastatic Breast Cancer (NaoMa)
- National Ovarian Cancer Audit (NOCA)
- National Non-Hodgkin Lymphoma Cancer Audit (NNHLA)
- National Pancreatic Cancer Audit (NPaCA)
- National Audit of Primary Breast Cancer (NAoPri)

'Established' audits:

- National Bowel Cancer Audit
- National Oesophago-Gastric Cancer Audit
- National Prostate Cancer Audit
- National Lung Cancer Audit

• The NLCA joined NATCAN in October 2023. The QI priorities for the NLCA were defined in 2022.

Tweets from @NATCAN_news

Reports for each cancer audit, published today 📄 @RCSnews @HQIP @NHSEngland @LSHTM bit.ly/413aXVD



National Kidney Cancer Audit and 7 others

National Cancer Audit Collaborating Centre reposted National Pancreatic ... @NPaCA, NAL - Nov 29 An umbrella approach to audit Caroline Rogers @HQIP & Dr Julie Novotter @NATCAN_news (pictured below with Prof Peter Johnson, National Clinical Director for Cancer)

Categories

- Announcements
- Blogs
- eNewsletters

Archive

- December 2023
- November 2023
- October 2023
- September 2023
- July 2023
- June 2023
- May 2023
- March 2023
- October 2022



National Cancer Audit Collaborating Centre @NATCAN_news

★ What are the quality improvement priorities for NATCAN? ★ Take a look at the Scoping Reports for each cancer audit, published today 📄



@RCSnews @HQIP @NHSEngland @LSHTM

bit.ly/413aXVD



National Kidney Cancer Audit and 7 others

11:10 AM · Nov 30, 2023 · 3,267 Views



NATCAN Annual Report 2023 – published 05.12.23

Highlights

During the first year, we:

- Established our governance structures including our [Executive Team and NATCAN Board](#)
- Built [new audit teams](#) for ovarian, pancreatic, non-Hodgkin lymphoma, kidney, and primary & metastatic breast cancer centred on strong clinical – methodological partnerships
- Developed close links with professional and patient stakeholder groups, including patient charities during the set-up of audit Clinical Reference Groups (CRGs)
- Launched our [website](#)
- Applied for routine, national cancer data, collaborating closely with the National Disease Registration Service and Wales Cancer Network
- Welcomed existing audits in prostate, bowel, oesophago-gastric and lung cancer to NATCAN
- Completed the scoping exercise for each audit, working closely with stakeholders including patients

New Audits

National Ovarian Cancer Audit

"Ovarian cancer is still known as the 'silent killer' and it is essential that we deliver the highest quality care that is equally effective and accessible in all cancer centres, so every patient who is diagnosed with this condition has access to the best treatment available."

Agneska Michael
Clinical Lead for medical oncology

Outcomes for women diagnosed with ovarian cancer vary considerably across the country. This new audit will produce detailed information on diagnosis, treatment and surgery which will help identify problems and produce better results.

"This will help patients, carers, charities, and the clinical community understand how we can best drive standards of ovarian cancer care forwards across both surgery and chemotherapy," says Susha Sander, NCCA's Clinical Lead for surgery.

The [National Ovarian Cancer Audit \(NCCA\)](#) has established [five quality improvement goals](#) across the patient pathway that are its main priorities in the short-term. These are aimed at improving timely treatment decisions and the use of molecular diagnostics; increasing the proportion of patients receiving first-line treatment with surgery and chemotherapy; and improving survival rates while also reducing variation in survival.

NCCA Clinical Lead highlighted the scoping work of the audit at the British Cancer Society (BCS) Annual Assembly meeting in June

Who We Are

The National Cancer Audit Collaborating Centre (NATCAN)	x30 clinicians	x15 academics
x10 national cancer audits	x5 managers	
x1 NATCAN Board comprising 18 members	x1 NATCAN Executive Team	
x19 patient charities who we work closely with	x12 clinical professional organisations who we collaborate with	
15 years + working on national cancer audits within the Clinical Effectiveness Unit at the Royal College of Surgeons of England		

National Cancer Audit Collaborating Centre @NATCAN_news

📖 #NATCAN's first Annual Report now published! Find out about the progress we have made in the first year 📖

bit.ly/47LjX8

#NATCAN @RCSnews @HQIP @NHSEngland @LSHTM

NATCAN National Cancer Audit Collaborating Centre

Annual Report 2023

👤 National Prostate Cancer Audit and 8 others

3:43 PM · Dec 5, 2023 · 1,185 Views

An 'umbrella approach' to audit: sharing, efficiencies and results

The National Cancer Audit Collaborating Centre (NATCAN) – one year on

In 2023, Professor Peter Johnson, National Clinical Director for Cancer at NHS England acknowledged the transformative power of healthcare data, saying: "We're in the middle of a real data revolution in the health service". It goes without saying that the clinical audit community plays a pivotal role in that 'data revolution'. However, to best realise the potential of data in healthcare, it too is going through a transformation. We look at the National Cancer Audit Collaborating Centre (NATCAN), which takes a truly collaborative approach to clinical audit...

@NATCAN_news

*Payment-linked deliverable (PLD)




Audit reporting: Quarterly

- Quarterly indicator reporting to support QI



NLCA
National Lung
Cancer Audit



NPCA
National Prostate
Cancer Audit



NOGCA
National Oesophago-Gastric
Cancer Audit



NBOCA
National Bowel
Cancer Audit



NAoMe
National Audit of
Metastatic Breast Cancer



NAoPri
National Audit of
Primary Breast Cancer



NKCA
National Kidney
Cancer Audit



NOCA
National Ovarian
Cancer Audit



NPaCA
National Pancreatic
Cancer Audit



NNHLA
National Non-Hodgkin
Lymphoma Audit

- *'Metric data publication'*
➡ January 2024 onwards
- *'Data Quality indicators'* *'Metric data publication'*
➡ Feb & May 2024 Aug 2024
- *'Data quality indicators'* *'Metric data publication'*
➡ July & Oct 2024 Jan 2025
- *'Data quality indicators'*
➡ April & July 2024
- *'Metric data publication'*
➡ October 2024

Audit reporting: Annual

- Annual 'State of the Nation (SotN)' report (approx. 10 pages, 5 recommendations)




NOGCA
National Oesophago-Gastric
Cancer Audit



NPCA
National Prostate
Cancer Audit

➔ SotN reports published Jan 2024



NBOCA
National Bowel
Cancer Audit

➔ SotN report published Feb 2024



NLCA
National Lung
Cancer Audit

➔ SotN report published April 2024



NAoMe
National Audit of
Metastatic Breast Cancer



NAoPri
National Audit of
Primary Breast Cancer



NKCA
National Kidney
Cancer Audit



NOCA
National Ovarian
Cancer Audit



NPaCA
National Pancreatic
Cancer Audit



NNHLA
National Non-Hodgkin
Lymphoma Audit

➔ SotN reports published Sept 2024





NATCAN

National Cancer Audit
Collaborating Centre

Stimulating improvement of cancer services

NATCAN

- NATCAN QI Team: coordinated by Clinical Director, supported by Clinical Fellows
- Academic partnership with University Leeds (Foy / Alderson)
- QI activities: flexible and responsive, based on experience in existing cancer audits in CEU
- Closely aligned with existing national initiatives for QI: NCAB, CQC, GIRFT



Audit level (following publication of reports)

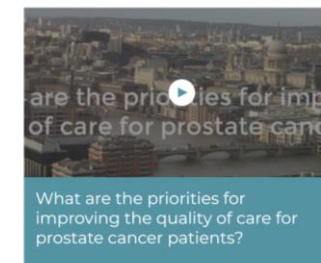
- Local action plans supported by targeted communication strategy
- QI tools for local teams to identify “good practice” / “areas of weakness”
- National programme of QI workshops / webinars
- Social media profile (via NATCAN resources) using range of channels

Innovation

- “Closing the audit cycle”, based on RCRD following the “plan-do-study-act” approach
- Fully imbedded in wider NATCAN QI strategy
- Each cancer audit will design and implement a QI initiative
- Part of a development and research programme of QI methods

Quality Improvement in Action

Watch these summaries of different aspects of the workshop.



NATCAN QI Event 27.03.24

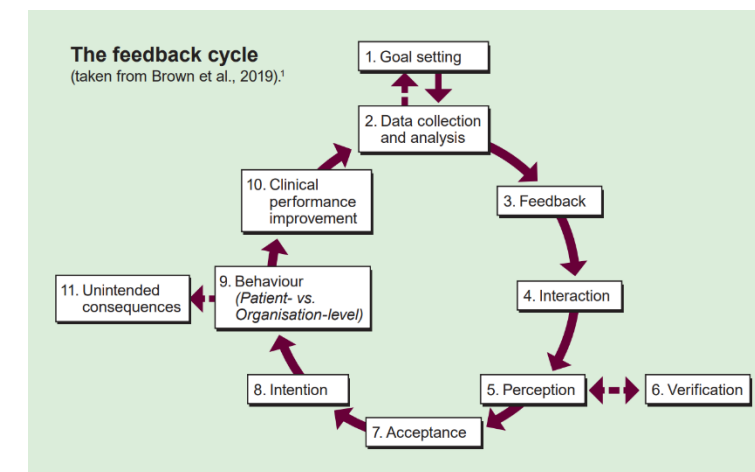
- NATCAN approach to supporting and targeting QI
- Identifying interventions for quality improvement – what works and doesn't
- Outcome Reporting and the role of positive outliers in driving QI
- How to design and implement QI initiatives – the clinical reality





NATCAN: next steps 2024

- Publish **Healthcare Improvement Plans**
 - Development & validation of performance indicators (PIs)
 - 10 PIs max
 - In consultation with stakeholders
 - Establish PPI Forums
 - Submission to HQIP/NHSE June 2024
- **Quarterly indicator reporting**
 - RCRD 'data quality metrics' July 2024
 - 'PI reporting' from Oct 2024
- **'State of the Nation' reports*** (10 pages max, 5 recommendations)
 - Submission to HQIP/NHSE June 2024
 - Publication September 2024
- **Greater focus on Quality Improvement (QI)**
 - Aiming to 'close the audit cycle'
 - Each audit will design & implement a QI initiative



*NPCA, NBOCA & NOGCA maintain reporting cycle in 2024, move to the same cycle as the 'new' audits in 2025. NLCA maintain reporting cycle.



NATCAN

National Cancer Audit
Collaborating Centre

Thank you!

