

NHS Digital

NHS Data Model and Dictionary Service

Type:	Change Request
Reference:	1442
Version No:	1.0
Subject:	HIV and AIDS Reporting Data Set and XML Schema Version 3
Effective Date:	1 November 2016
Reason for Change:	Change to Data Standards
Publication Date:	24 October 2016

Background:

The HIV and AIDS Reporting Data Set initial standard was approved by the Information Standards Board for Health and Social Care as [ISB 1570 Amd 164/2010](#).

Further changes to the Information Standard are now required.

The changes include:

- The scope of the HIV and AIDS Reporting Data Set has changed from "all patients who are newly diagnosed with Human Immunodeficiency Virus (HIV) or newly transferred to other Health Care Providers" to "all patients who are diagnosed with Human Immunodeficiency Virus (HIV) and receive HIV care from Health Care Providers."
- New items have been added to the data set
- Items no longer required have been retired from the data set.

To support the Information Standard, this Change Request:

- Updates the NHS Data Model and Dictionary to make changes to the HIV and AIDS Reporting Data Set
- Provides a link to download the HIV and AIDS Reporting Data Set XML Schema Version 3.0.

To view a demonstration on "How to Read an NHS Data Model and Dictionary Change Request", visit the NHS Data Model and Dictionary help pages at: http://www.datadictionary.nhs.uk/Flash_Files/changerequest.htm.

Note: if the web page does not open, please copy the link and paste into the web browser.

Summary of changes:

Diagrams

ACTIVITY DIAGRAM	Changed Diagram
CANCER OUTCOMES AND SERVICES DIAGRAM	Changed Diagram
CHILDREN AND YOUNG PEOPLE'S HEALTH SERVICES DIAGRAM	Changed Diagram
COMMUNITY INFORMATION DIAGRAM	Changed Diagram
DIAGNOSTIC IMAGING DIAGRAM	Changed Diagram
HIV AND AIDS DIAGRAM	Changed Diagram
IMPROVING ACCESS TO PSYCHOLOGICAL THERAPIES DIAGRAM	Changed Diagram
MATERNITY SERVICES DIAGRAM	Changed Diagram
NATIONAL JOINT REGISTRY DIAGRAM	Changed Diagram
NATIONAL WORKFORCE DIAGRAM	Changed Diagram
SYSTEMIC ANTI-CANCER THERAPY DIAGRAM	Changed Diagram

Data Set

[HIV AND AIDS REPORTING DATA SET](#)

Changed Description

Supporting Information

[BRITISH HIV ASSOCIATION](#)

New Supporting Information

[GLOSSARY OF TERMS](#)

Changed Description

[HIV AND AIDS REPORTING DATA SET OVERVIEW](#)

Changed Description

[HIV CLINIC ATTENDANCE](#)

Changed Description

[REFERENCED ORGANISATIONS MENU](#)

Changed Description

[SEXUAL HEALTH AND HIV EPISODE](#)

Changed Description

Class Definitions

[ACTIVITY GROUP](#)

Changed Attributes

[CARE CONTACT](#)

Changed Attributes

[CARE PROFESSIONAL](#)

Changed Attributes

[CATEGORY VALUED PERSON OBSERVATION](#)

Changed Attributes

[CLINICAL INTERVENTION](#)

Changed Attributes

[OTHER PERSON OBSERVATION](#)

Changed Attributes

[PATIENT DIAGNOSIS](#)

Changed Attributes

[PERSON](#)

Changed Attributes

[PERSON NAME](#)

Changed Attributes

[PERSON NAME STRUCTURED](#)

Changed Attributes

[PRESCRIBED ITEM](#)

Changed Attributes

Attribute Definitions

[AIDS DEFINING ILLNESS TYPE \(RETIRED\)](#) renamed from [AIDS DEFINING ILLNESS TYPE](#)

Changed Description, status to Retired, Name

[ANTIRETROVIRAL THERAPY DRUG PRESCRIBED CODE \(RETIRED\)](#) renamed from [ANTIRETROVIRAL THERAPY DRUG PRESCRIBED CODE](#)

Changed Description, status to Retired, Name

[ANTIRETROVIRAL THERAPY DRUG REGIMEN GROUP CODE](#) renamed from [ANTIRETROVIRAL THERAPY GROUP CODE](#)

Changed Description, Name

[ANTIRETROVIRAL THERAPY HOME DELIVERY INDICATOR](#)

Changed Description

[CARE PROFESSIONAL TYPE FOR HIV](#)

New Attribute

[CLINIC ATTENDANCE PURPOSE CODE FOR HIV](#)

Changed Description

[CONSULTATION MEDIUM USED](#)

Changed Description

[FIRST ANTIRETROVIRAL THERAPY IN UNITED KINGDOM INDICATOR](#)

Changed Description

[GENDER IDENTITY CODE FOR HIV \(RETIRED\)](#) renamed from [GENDER IDENTITY CODE FOR HIV](#)

Changed Description, status to Retired, Name

[GENDER IDENTITY CODE FOR SEXUAL HEALTH](#)

New Attribute

[GENDER IDENTITY SAME AT BIRTH INDICATOR](#)

New Attribute

[HUMAN PAPILOMAVIRUS VACCINATION DOSE GIVEN](#)

New Attribute

[INITIAL DIAGNOSIS CARE SETTING OR SERVICE FOR HIV](#) renamed from [INITIAL DIAGNOSIS CARE SETTING FOR HIV](#)

Changed Description, Name

[NEW HIV DIAGNOSIS IN UNITED KINGDOM INDICATOR](#)

Changed Description

[NUMBER OF HIV CONTACTS \(RETIRED\)](#) renamed from [NUMBER OF HIV CONTACTS](#)

Changed Description, status to Retired, Name

[PATIENT DIAGNOSIS TYPE FOR HIV \(RETIRED\)](#) renamed from [PATIENT DIAGNOSIS TYPE FOR HIV](#)

Changed Description, status to Retired, Name

[PATIENT EXPOSURE TO HIV](#)

Changed Description

[PERSON GENDER TYPE \(RETIRED\)](#) renamed from [PERSON GENDER TYPE](#)

Changed Description, status to Retired, Name

[POST AND/OR PRE EXPOSURE PROPHYLAXIS CODE \(RETIRED\)](#) renamed from [POST AND/OR PRE EXPOSURE PROPHYLAXIS CODE](#)

Changed Description, status to Retired, Name

[POST-EXPOSURE PROPHYLAXIS INDICATOR](#)

New Attribute

[PRE-EXPOSURE PROPHYLAXIS INDICATOR](#)

New Attribute

[PREGNANCY INDICATOR FOR HIV](#)

Changed Description

[PREVIOUS NEGATIVE HIV TEST INDICATOR](#) renamed from [PREVIOUS NEGATIVE HIV TEST IN UNITED KINGDOM INDICATOR](#)

Changed Description, Name

PRISONER INDICATOR	Changed Description
PSYCHIATRIC CARE INDICATOR FOR HIV	Changed Description
SEX WORKER INDICATOR	Changed Description
YEAR AND MONTH FIRST STARTED ANTIRETROVIRAL THERAPY (RETIRED) renamed from YEAR AND MONTH FIRST STARTED ANTIRETROVIRAL THERAPY	Changed Description, status to Retired, Name
YEAR AND MONTH OF LAST NEGATIVE HIV TEST (RETIRED) renamed from YEAR AND MONTH OF LAST NEGATIVE HIV TEST IN UNITED KINGDOM	Changed Description, status to Retired, Name
YEAR OF DIAGNOSIS OUTSIDE UNITED KINGDOM FOR HIV (RETIRED) renamed from YEAR OF DIAGNOSIS OUTSIDE UNITED KINGDOM FOR HIV	Changed Description, status to Retired, Name
YEAR OF UK ENTRY (RETIRED) renamed from YEAR OF UK ENTRY	Changed Description, status to Retired, Name
Data Elements	
AIDS DEFINING ILLNESS CODE ADULT (SNOMED CT)	New Data Element
AIDS DEFINING ILLNESS TYPE (RETIRED) renamed from AIDS DEFINING ILLNESS TYPE	Changed Description, linked Attribute, status to Retired, Name
ANTIRETROVIRAL THERAPY DRUG (SNOMED CT DM+D)	New Data Element
ANTIRETROVIRAL THERAPY DRUG PRESCRIBED CODE (RETIRED) renamed from ANTIRETROVIRAL THERAPY DRUG PRESCRIBED CODE	Changed Description, linked Attribute, status to Retired, Name
ANTIRETROVIRAL THERAPY DRUG REGIMEN GROUP CODE renamed from ANTIRETROVIRAL THERAPY GROUP CODE	Changed Description, Name
CARE PROFESSIONAL TYPE (HIV)	New Data Element
CD4 CELL COUNT	Changed Description
CD4 CELL COUNT PERFORMED INDICATOR	Changed Description
CHRONIC VIRAL LIVER DISEASE TREATMENT INDICATOR (HIV) renamed from CHRONIC VIRAL LIVER DISEASE INDICATOR (HIV)	Changed Description, Name
CLINICAL TRIAL INDICATOR	Changed Description
COUNTRY CODE (HIV INFECTION)	Changed Description
CURRENT SEX WORKER INDICATOR renamed from SEX WORKER INDICATOR	Changed Description, Name
DATE FIRST SEEN	Changed Description
DEATH CAUSE ICD CODE (CARE PROFESSIONAL REPORTED)	New Data Element
DEATH CAUSE ICD CODE (CONDITION)	Changed Description
DIAGNOSIS DATE IN UNITED KINGDOM (HIV)	Changed Description
GENDER IDENTITY CODE (HIV) (RETIRED) renamed from GENDER IDENTITY CODE (HIV)	Changed Description, linked Attribute, status to Retired, Name
GENDER IDENTITY CODE (SEXUAL HEALTH)	New Data Element
GENDER IDENTITY SAME AT BIRTH INDICATOR	New Data Element
HARS MESSAGE VERSION IDENTIFIER	Changed Description
HARS SUBMISSION RECORD COUNT	Changed Description
HARS UNIQUE IDENTIFIER	Changed Description
HEPATITIS B INFECTION INDICATION CODE renamed from HEPATITIS B INFECTION INDICATOR	Changed Description, Name
HEPATITIS C INFECTION INDICATION CODE renamed from HEPATITIS C INFECTION INDICATOR	Changed Description, Name
HUMAN PAPILLOMAVIRUS VACCINATION DOSE GIVEN	New Data Element
INITIAL DIAGNOSIS CARE SETTING OR SERVICE (HIV) renamed from INITIAL DIAGNOSIS CARE SETTING (HIV)	Changed Description, Name
LATENT TUBERCULOSIS TEST PERFORMED INDICATOR	New Data Element
NUMBER OF HIV CONTACTABLE CONTACTS	Changed Description, linked Attribute
NUMBER OF HIV CONTACTABLE CONTACTS TESTED FOR HIV	Changed Description, linked Attribute
NUMBER OF HIV CONTACTS	Changed Description, linked Attribute
OFFER STATUS (HUMAN PAPILLOMAVIRUS VACCINATION)	New Data Element

PATIENT CONSENT OBTAINED INDICATOR (CARE PROFESSIONAL CONTACT)	Changed Description
PATIENT DIAGNOSIS INDICATOR (HIV END ORGAN DISEASE)	Changed Description
PATIENT DIAGNOSIS INDICATOR (SEROCONVERSION ILLNESS)	Changed Description
PATIENT DIAGNOSIS INDICATOR (VIRAEMIA)	New Data Element
PERSON GENDER CODE AT REGISTRATION (RETIRED) renamed from PERSON GENDER CODE AT REGISTRATION	Changed Description, linked Attribute, status to Retired, Name
PERSON GENDER CODE CURRENT	Changed Description
PERSON GENDER CURRENT	Changed Description
POST AND/OR PRE EXPOSURE PROPHYLAXIS CODE (RETIRED) renamed from POST AND/OR PRE EXPOSURE PROPHYLAXIS CODE	Changed Description, linked Attribute, status to Retired, Name
POST-EXPOSURE PROPHYLAXIS INDICATOR	New Data Element
PRE-EXPOSURE PROPHYLAXIS INDICATOR	New Data Element
PREVIOUS NEGATIVE HIV TEST INDICATOR renamed from PREVIOUS NEGATIVE HIV TEST IN UNITED KINGDOM INDICATOR	Changed Description, Name
SITE CODE (OF PREVIOUS HIV CARE)	Changed Description
SITE CODE (REFERRED TO FOR SHARED HIV CARE) renamed from SITE CODE (REFERRED TO FOR HIV CARE)	Changed Description, Name
TEST OF RECENT INFECTION RESULT (HIV)	Changed Description
VIRAL LOAD COUNT	Changed Description
VIRAL LOAD COUNT PERFORMED INDICATOR	Changed Description
YEAR	New Data Element
YEAR AND MONTH FIRST STARTED ANTIRETROVIRAL THERAPY	Changed Description, linked Attribute
YEAR AND MONTH OF LAST CARE PROFESSIONAL HIV COMMUNICATION	New Data Element
YEAR AND MONTH OF LAST NEGATIVE HIV TEST renamed from YEAR AND MONTH OF LAST NEGATIVE HIV TEST IN UNITED KINGDOM	Changed Description, linked Attribute, Name
YEAR OF DIAGNOSIS OUTSIDE UNITED KINGDOM (HIV)	Changed Description, linked Attribute
YEAR OF UK ENTRY	Changed Description, linked Attribute
<u>XML Schema Constraint</u>	
HIV AND AIDS REPORTING DATA SET XML SCHEMA CONSTRAINTS	Changed Description

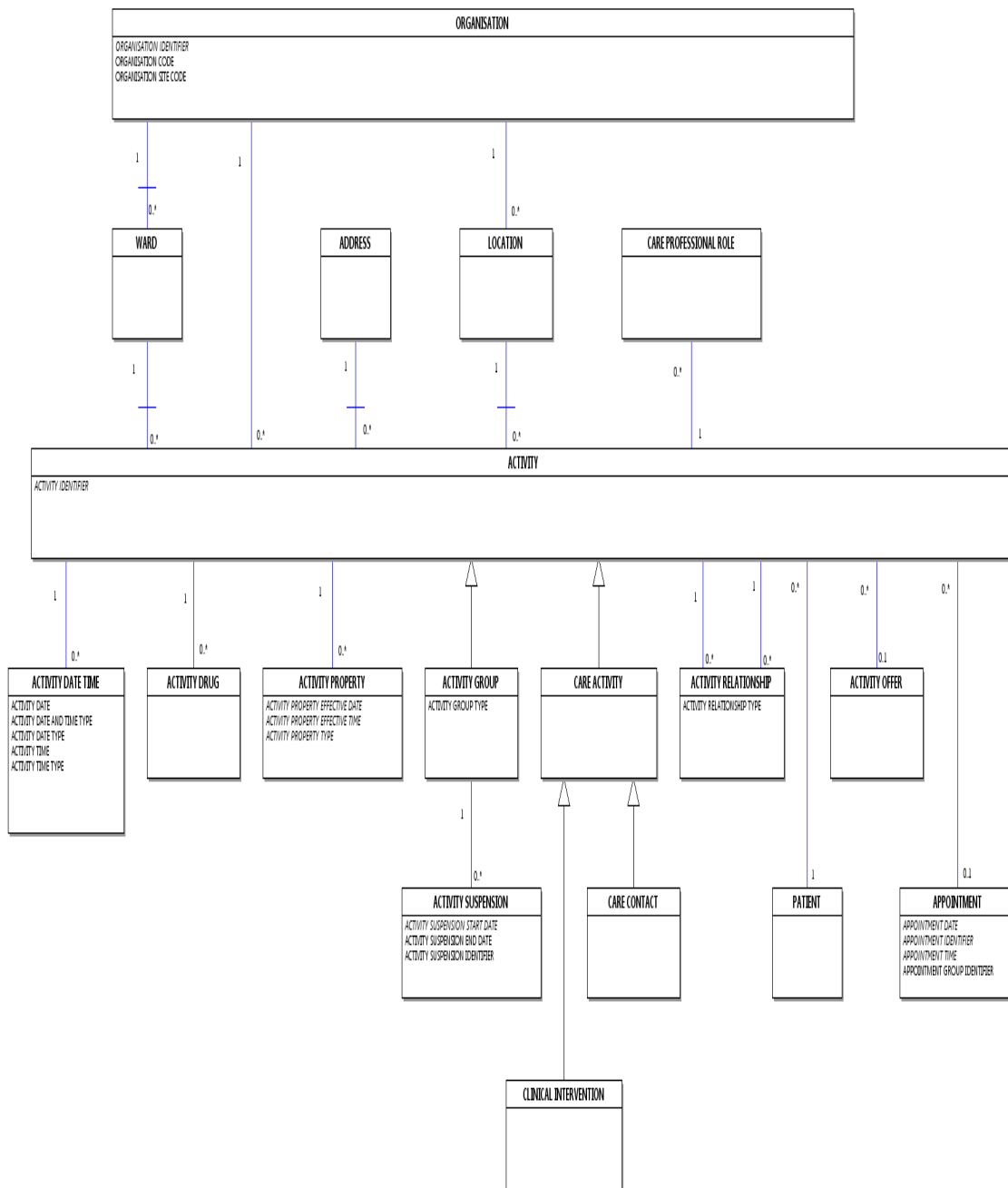
Date: 24 October 2016

Sponsor: Dr Valerie Delpech, Consultant Epidemiologist, Public Health England

Note: New text is shown with a blue background. Deleted text is crossed out. Retired text is shown in grey. Within the Diagrams deleted classes and relationships are red, changed items are blue and new items are green.

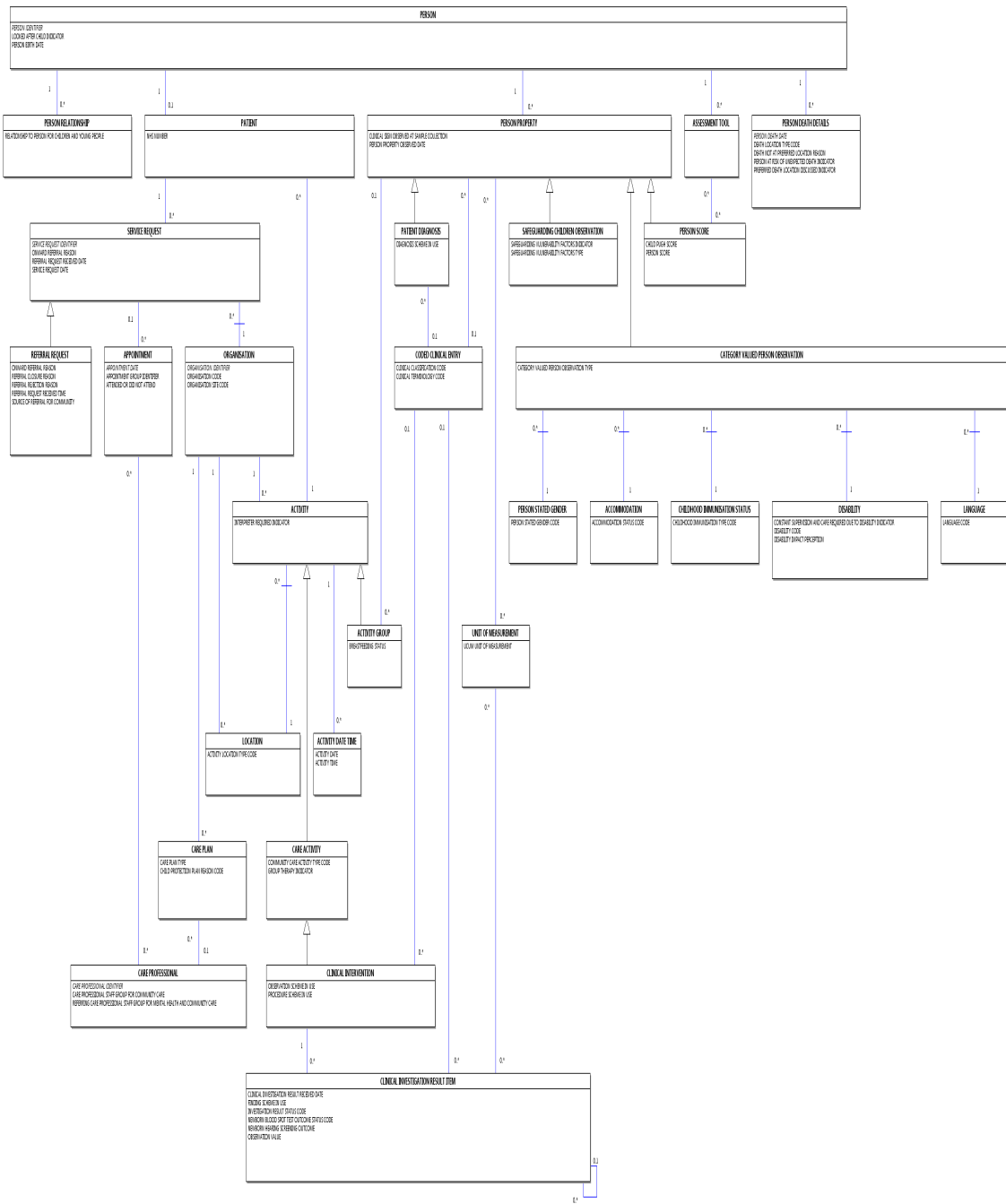
ACTIVITY DIAGRAM

Change to Diagram: Changed Diagram



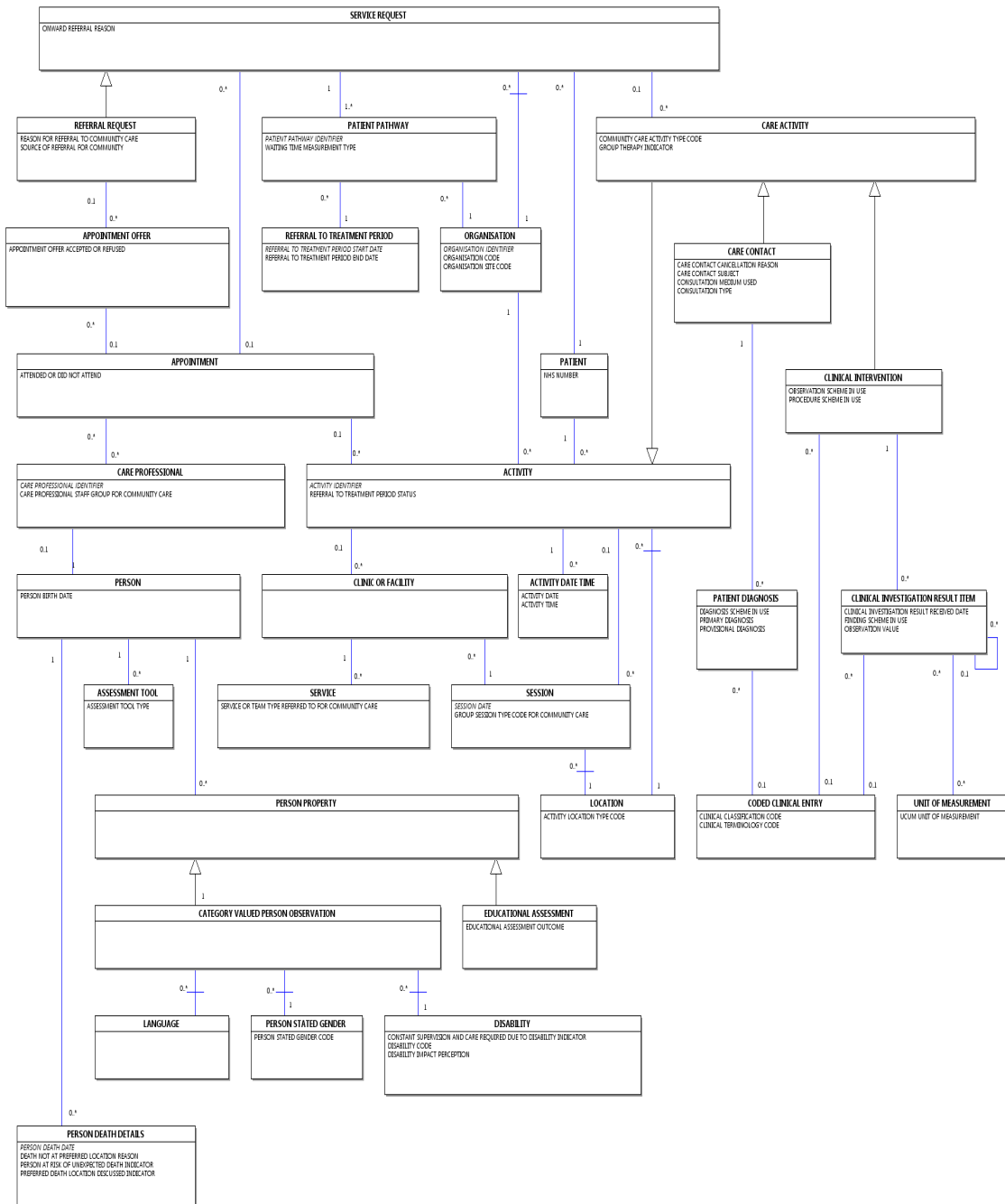
CHILDREN AND YOUNG PEOPLE'S HEALTH SERVICES DIAGRAM

Change to Diagram: Changed Diagram



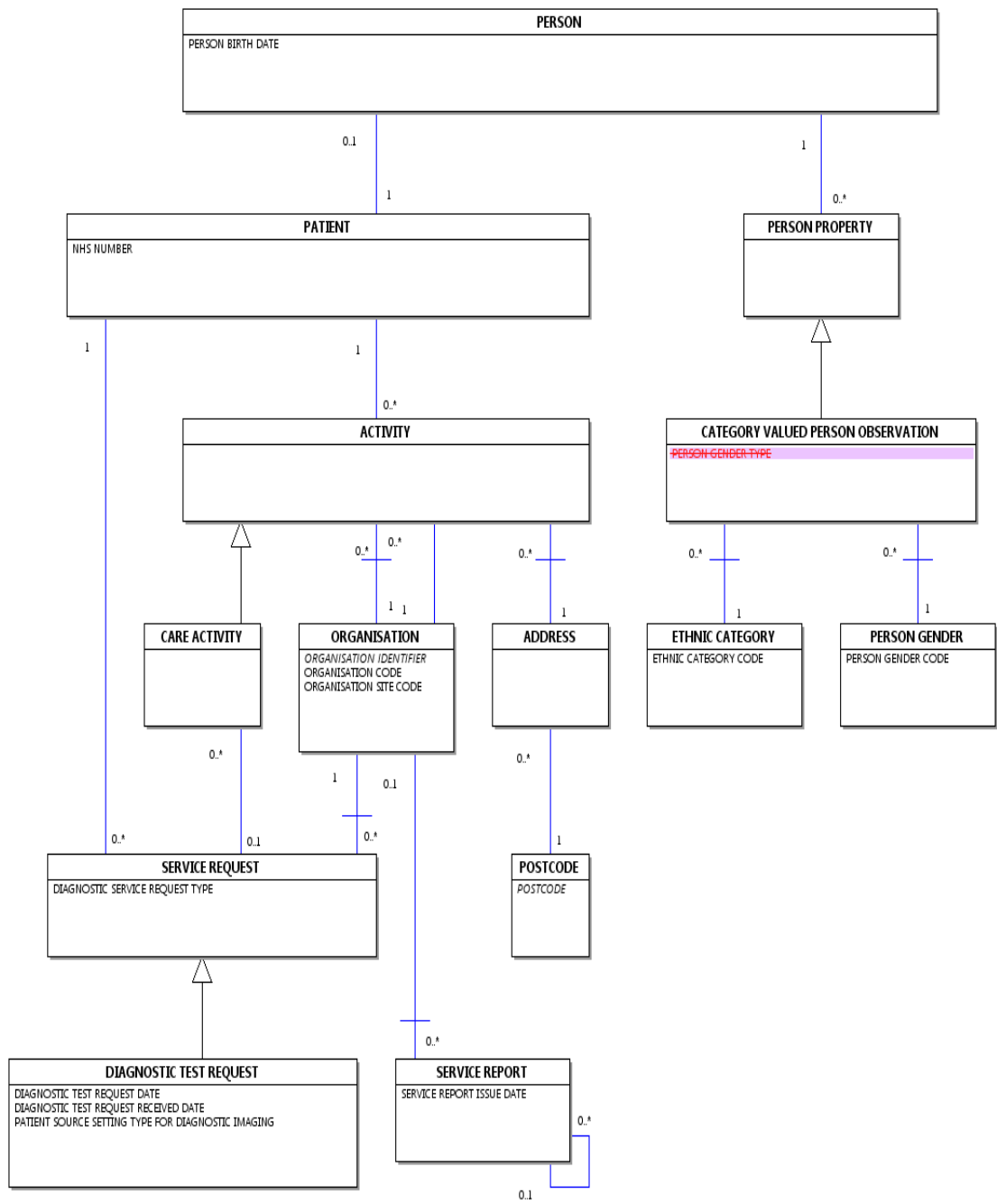
COMMUNITY INFORMATION DIAGRAM

Change to Diagram: Changed Diagram



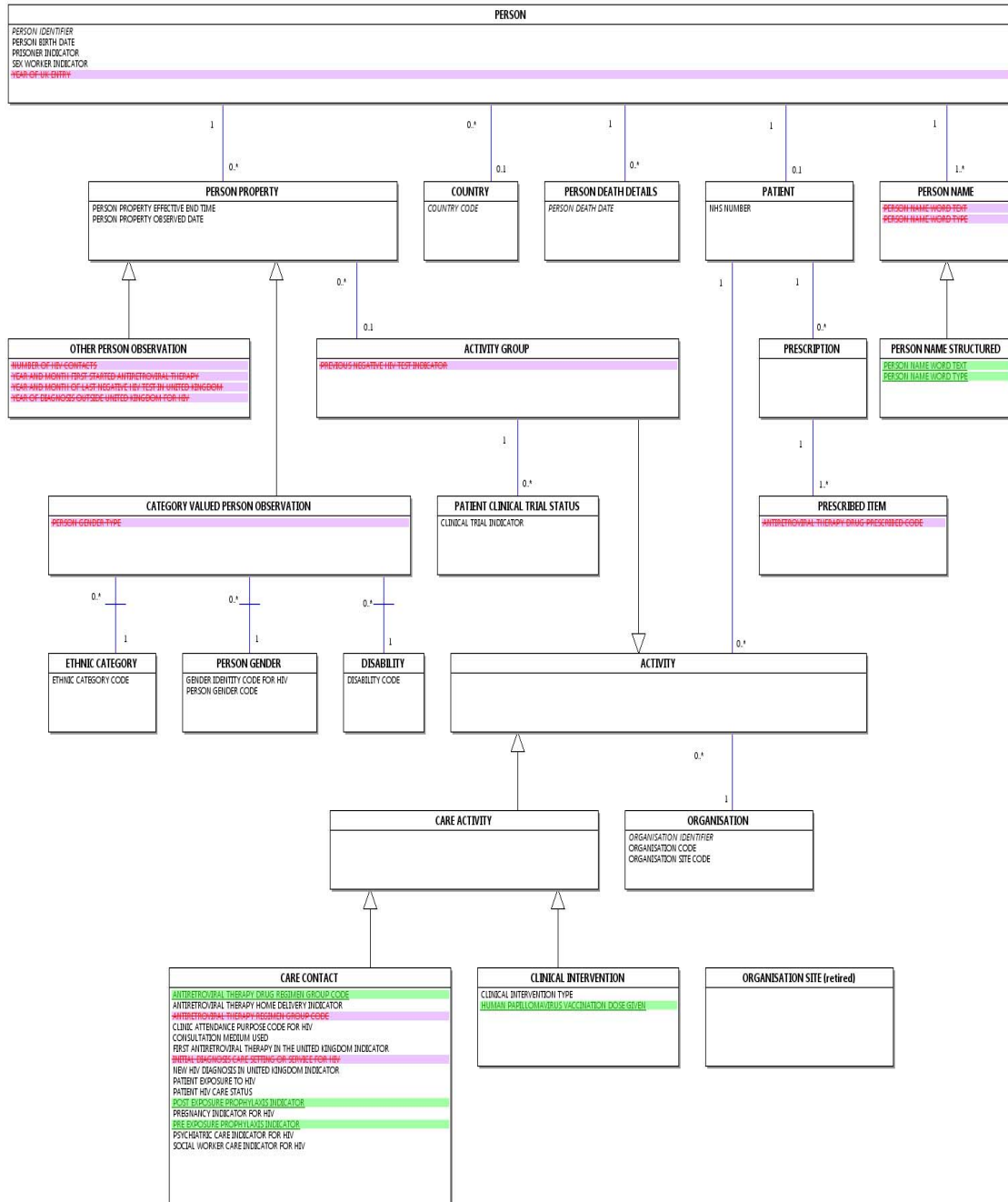
DIAGNOSTIC IMAGING DIAGRAM

Change to Diagram: Changed Diagram



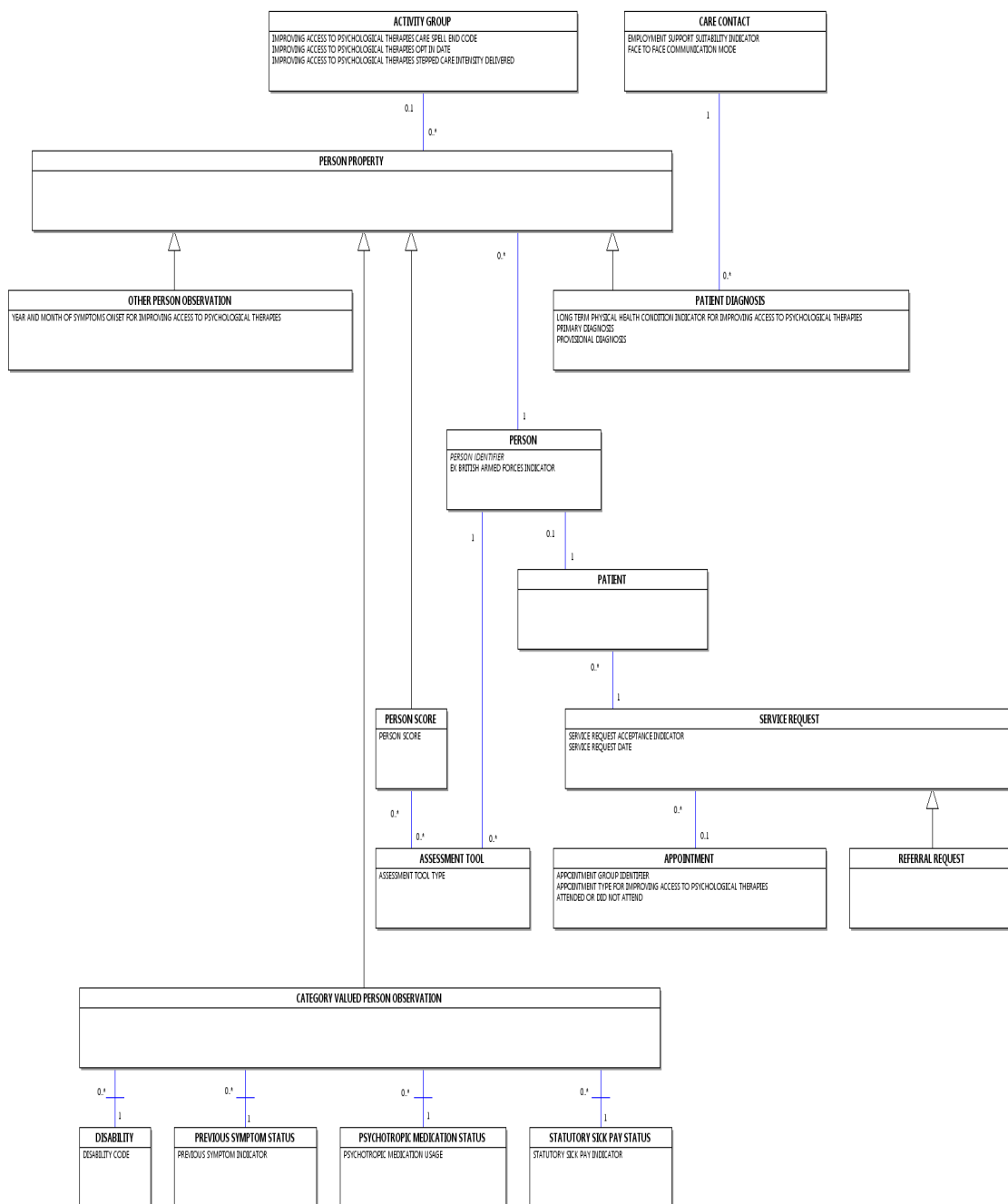
HIV AND AIDS DIAGRAM

Change to Diagram: Changed Diagram



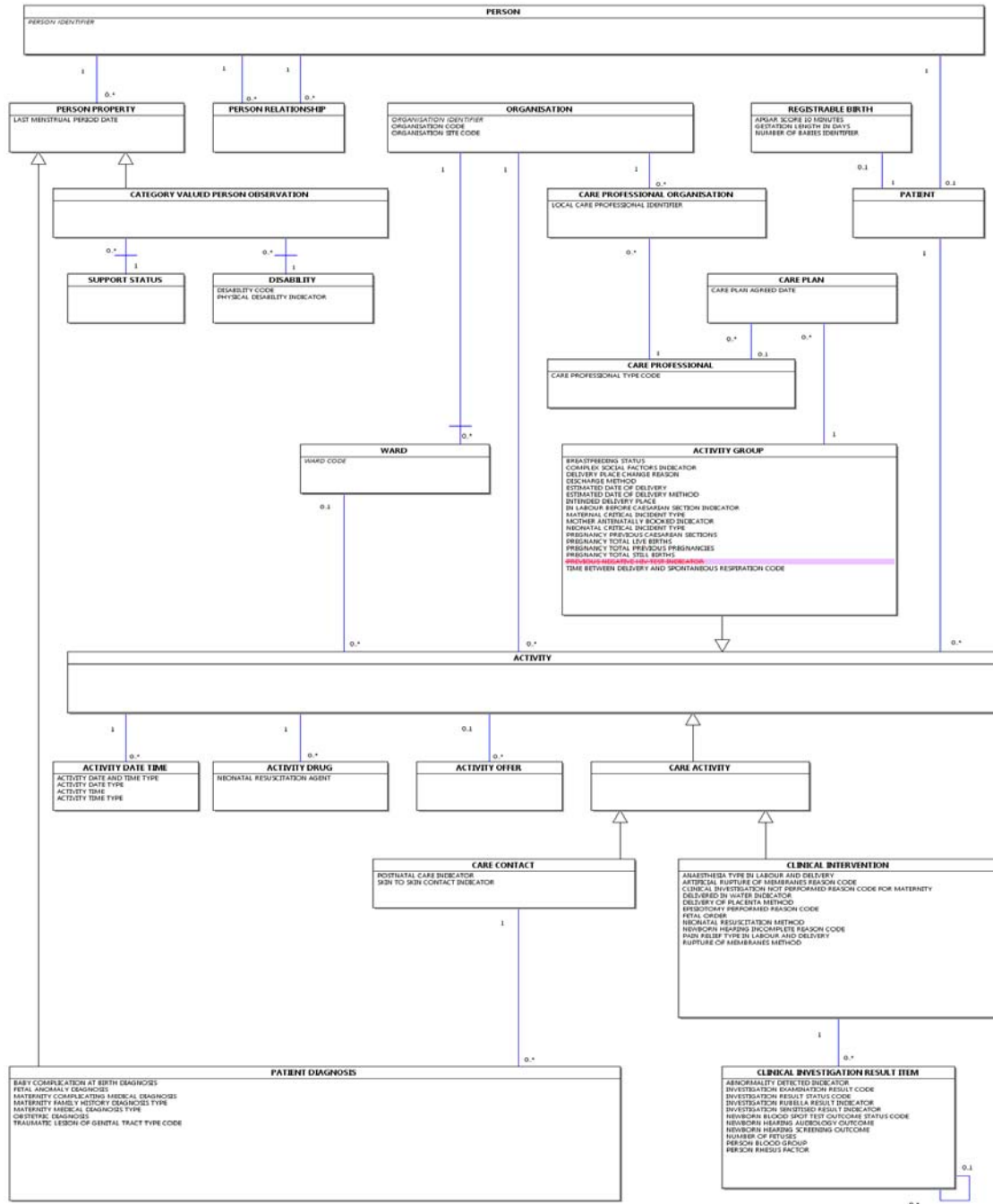
IMPROVING ACCESS TO PSYCHOLOGICAL THERAPIES DIAGRAM

Change to Diagram: Changed Diagram



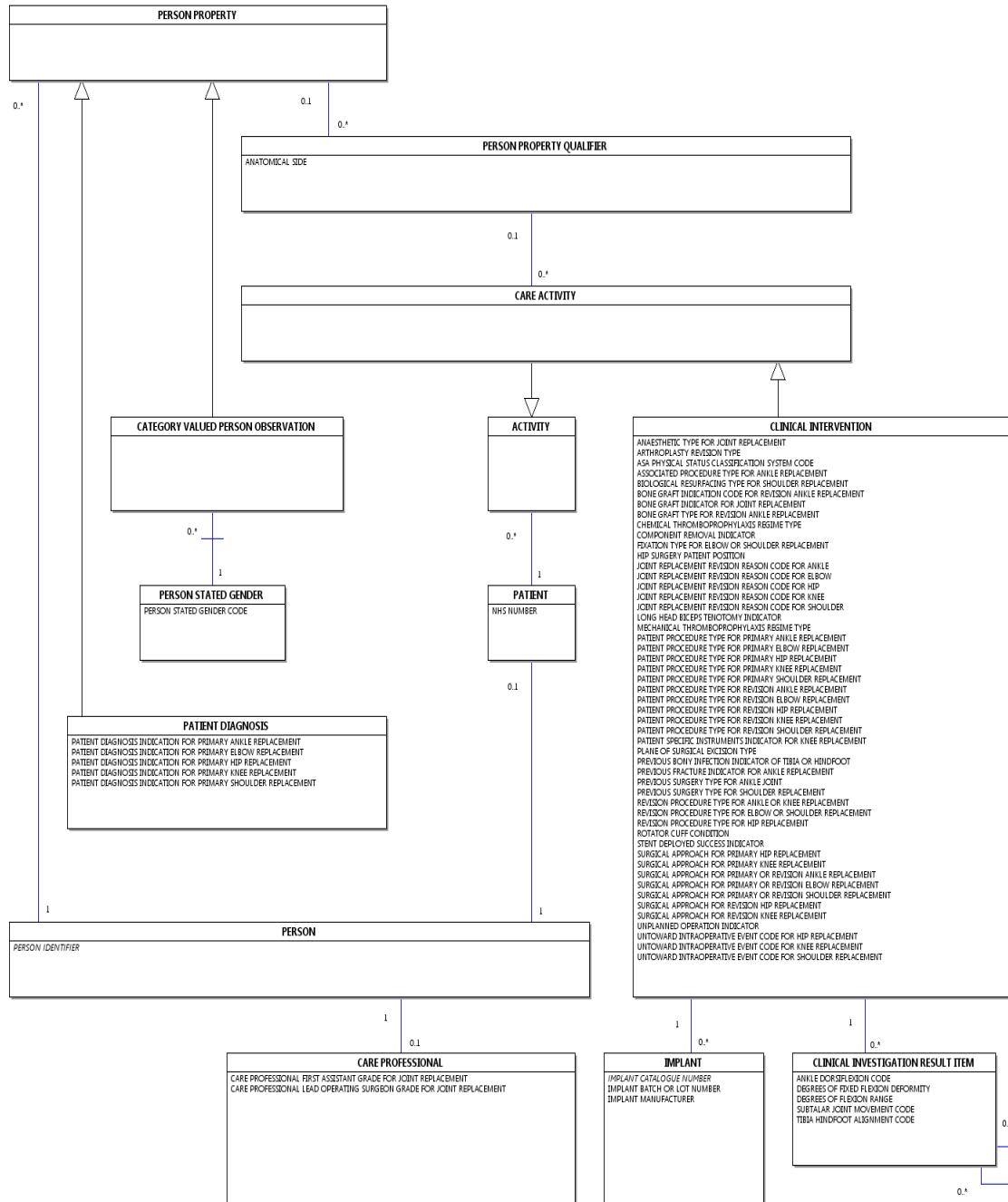
MATERNITY SERVICES DIAGRAM

Change to Diagram: Changed Diagram



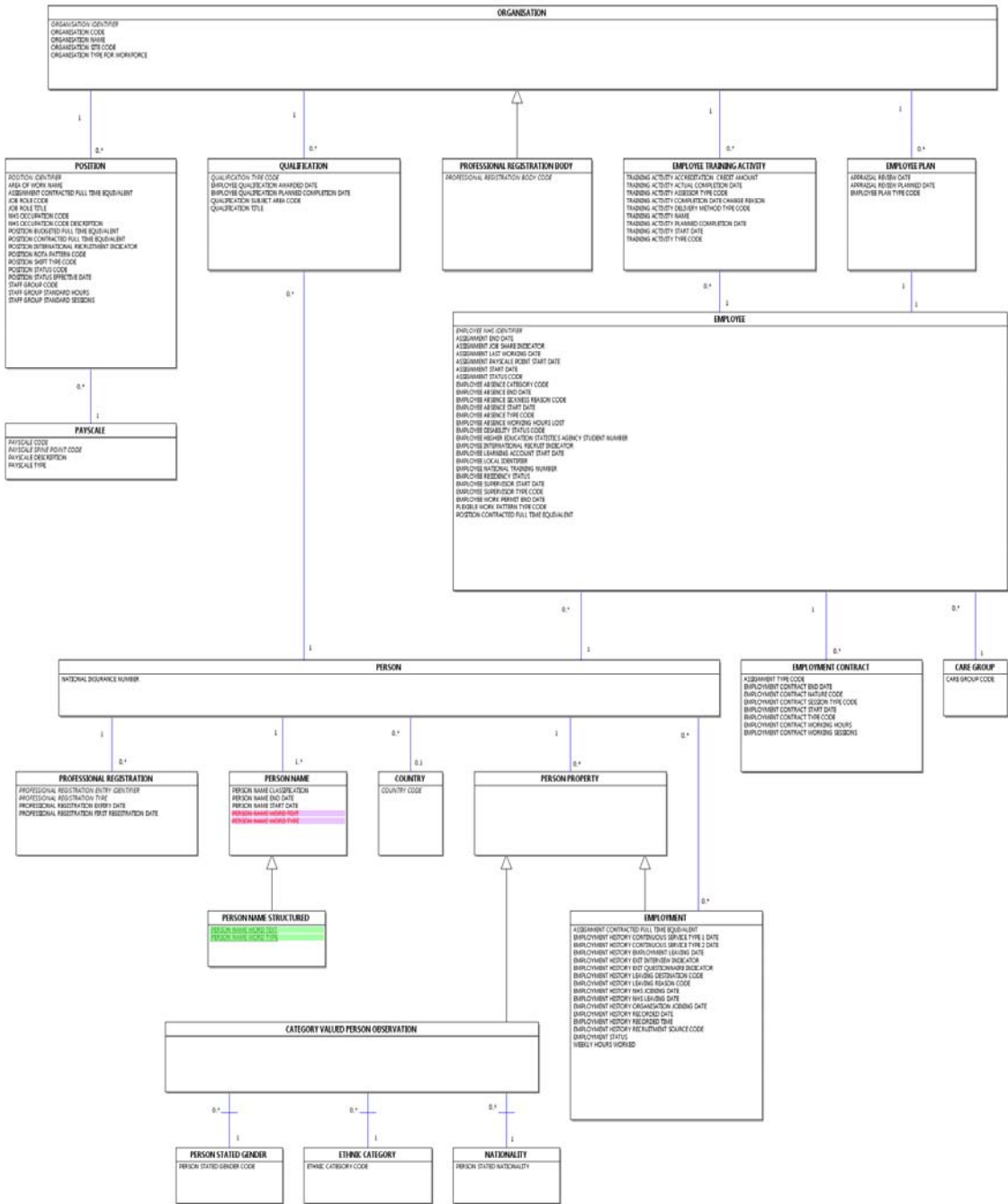
NATIONAL JOINT REGISTRY DIAGRAM

Change to Diagram: Changed Diagram



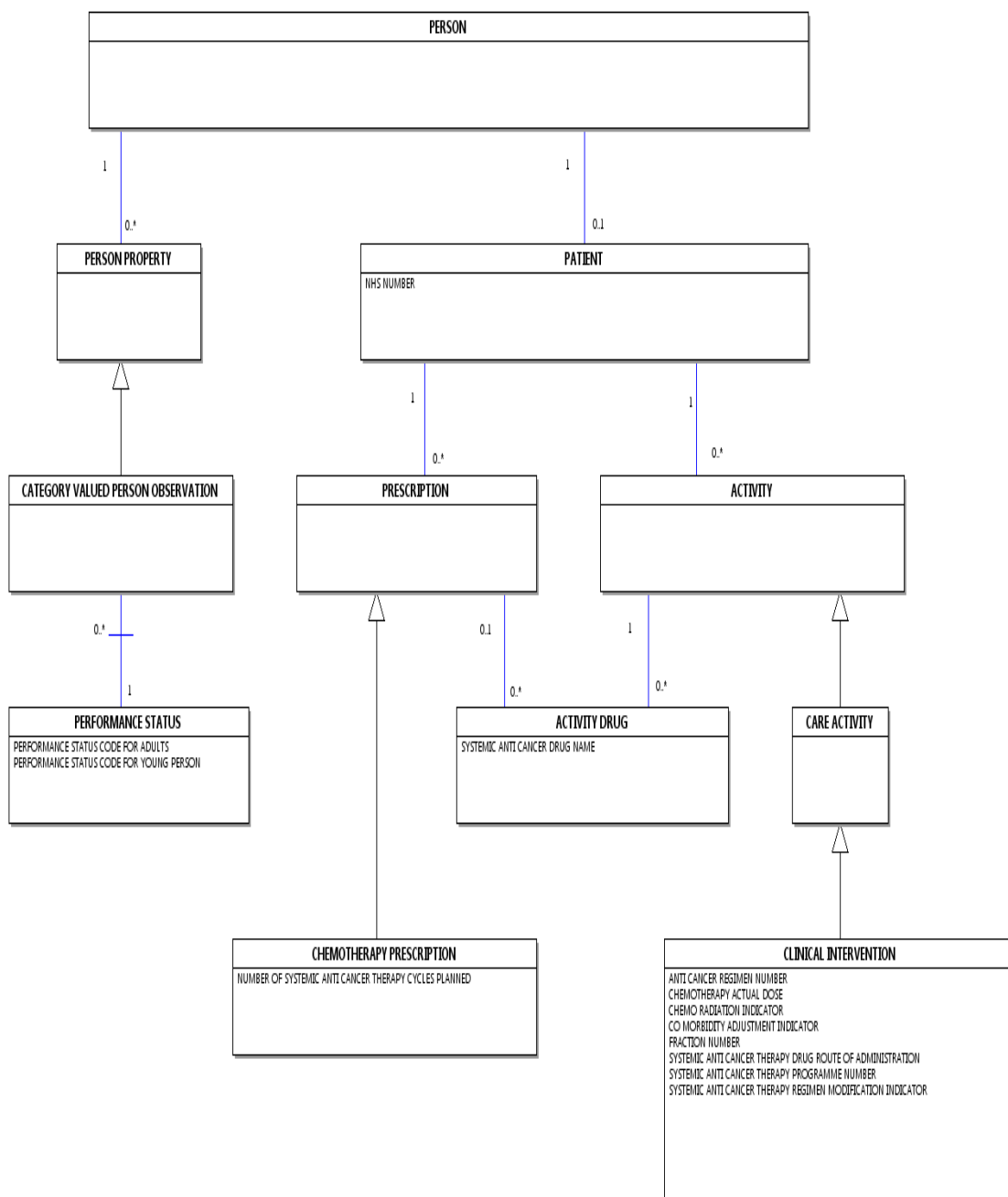
NATIONAL WORKFORCE DIAGRAM

Change to Diagram: Changed Diagram



SYSTEMIC ANTI-CANCER THERAPY DIAGRAM

Change to Diagram: Changed Diagram



HIV AND AIDS REPORTING DATA SET

Change to Data Set: Changed Description

[HIV and AIDS Reporting Data Set Overview](#)

The Mandatory, Required or Optional (M/R/O) column indicates the recommendation for the inclusion of data.

- M = Mandatory: this data element is mandatory and the technical process (e.g. submission of the data set, production of output etc) cannot be completed without this data element being present
- R = Required: NHS business processes cannot be delivered without this data element
- O = Optional: the inclusion of this data element is optional as required for local purposes.

For guidance on downloading the XML Schema, see [XML Schema TRUD Download](#).

For guidance on the XML Schema constraints, see the [HIV and AIDS Reporting Data Set XML Schema Constraints](#).

SUBMISSION IDENTIFIER

To carry the submission header details.
One occurrence of this group is required.

M/R/O	Data Set Data Elements
M	HARS SUBMISSION IDENTIFIER
M	HARS SUBMISSION RECORD COUNT
M	REPORTING PERIOD START DATE
M	REPORTING PERIOD END DATE
M	HARS MESSAGE VERSION IDENTIFIER
M	ORGANISATION CODE (CODE OF SUBMITTING ORGANISATION)
M	DATE AND TIME DATA SET CREATED
M	HARS TEST INDICATOR

RECORD IDENTIFIER

To carry the record identifier details.
One occurrence of this group is required.

M/R/O	Data Set Data Elements
M	HARS UNIQUE IDENTIFIER

PERSONAL AND DEMOGRAPHIC

To carry personal and demographic details for the patient.
One occurrence of this group is required.

M/R/O	Data Set Data Elements
M	LOCAL PATIENT IDENTIFIER (EXTENDED)
R	GENERAL MEDICAL PRACTICE CODE (PATIENT REGISTRATION)
R	PATIENT CONSENT OBTAINED INDICATOR (CARE PROFESSIONAL CONTACT)
R	YEAR AND MONTH OF LAST CARE PROFESSIONAL HIV COMMUNICATION
M	PERSON SURNAME SOUNDEX CODE
R	PERSON INITIAL (FIRST)
R	PERSON BIRTH DATE
M	PERSON GENDER CODE AT REGISTRATION
M	GENDER IDENTITY CODE (HIV)
M	GENDER IDENTITY CODE (SEXUAL HEALTH)
M	GENDER IDENTITY SAME AT BIRTH INDICATOR
R	ETHNIC CATEGORY
R	COUNTRY CODE (BIRTH)
M	LOWER LAYER SUPER OUTPUT AREA (RESIDENCE)
M	LOWER LAYER SUPER OUTPUT AREA (PERSON RESIDENCE)
R	PRISONER INDICATOR
R	SEX WORKER INDICATOR
R	CURRENT SEX WORKER INDICATOR
R	DISABILITY CODE Multiple occurrences of this item are permitted

SERVICE INFORMATION

To carry service information details for the patient.
One occurrence of this group is permitted.

M/R/O	Data Set Data Elements
M	ORGANISATION CODE (CODE OF PROVIDER)
M	SITE CODE (OF TREATMENT)
M	PATIENT HIV CARE STATUS
R	SITE CODE (OF PREVIOUS HIV CARE)
R	SITE CODE (REFERRED TO FOR HIV CARE)
R	SITE CODE (REFERRED TO FOR SHARED HIV CARE)

HIV CLINIC ATTENDANCE

To carry clinic attendance details for the patient.
One occurrence of this group is required.

M/R/O	Data Set Data Elements
R	CONSULTATION MEDIUM USED
R	CONSULTATION MEDIUM USED
R	CLINIC ATTENDANCE PURPOSE CODE (HIV)
R	CARE PROFESSIONAL TYPE (HIV) Multiple occurrences of this item are permitted
M	ATTENDANCE DATE

DIAGNOSIS

To carry diagnosis details for the patient.
One occurrence of this group is required.

M/R/O	Data Set Data Elements
M	NEW HIV DIAGNOSIS IN UNITED KINGDOM INDICATOR
R	DIAGNOSIS DATE IN UNITED KINGDOM (HIV)
M	DIAGNOSIS DATE IN UNITED KINGDOM (HIV)
O	YEAR OF DIAGNOSIS OUTSIDE UNITED KINGDOM (HIV)
M	DATE FIRST SEEN
M	PATIENT EXPOSURE TO HIV
R	COUNTRY CODE (HIV INFECTION)
R	YEAR OF UK ENTRY
R	INITIAL DIAGNOSIS CARE SETTING (HIV)
R	PREVIOUS NEGATIVE HIV TEST IN UNITED KINGDOM INDICATOR
R	YEAR AND MONTH OF LAST NEGATIVE HIV TEST IN UNITED KINGDOM
R	INITIAL DIAGNOSIS CARE SETTING OR SERVICE (HIV)
R	PREVIOUS NEGATIVE HIV TEST INDICATOR
R	YEAR AND MONTH OF LAST NEGATIVE HIV TEST
R	PATIENT DIAGNOSIS INDICATOR (SEROCONVERSION ILLNESS)
R	TEST OF RECENT INFECTION RESULT (HIV)
Ø	NUMBER OF HIV CONTACTS
Ø	NUMBER OF HIV CONTACTABLE CONTACTS
Ø	NUMBER OF HIV CONTACTABLE CONTACTS TESTED FOR HIV
R	NUMBER OF HIV CONTACTS

R	NUMBER OF HIV CONTACTABLE CONTACTS
R	NUMBER OF HIV CONTACTABLE CONTACTS TESTED FOR HIV

TREATMENT

To carry treatment details for the patient. One occurrence of this group is permitted.	
M/R/O	Data Set Data Elements
M	FIRST ANTIRETROVIRAL THERAPY IN UNITED KINGDOM INDICATOR
R	YEAR AND MONTH FIRST STARTED ANTIRETROVIRAL THERAPY
R	START DATE (ANTIRETROVIRAL THERAPY AT CURRENT PROVIDER)
R	POST AND/OR PRE EXPOSURE PROPHYLAXIS CODE
R	ANTIRETROVIRAL THERAPY DRUG PRESCRIBED CODE Multiple occurrences of this item are permitted
M	ANTIRETROVIRAL THERAPY GROUP CODE
R	POST-EXPOSURE PROPHYLAXIS INDICATOR
R	PRE-EXPOSURE PROPHYLAXIS INDICATOR
R	ANTIRETROVIRAL THERAPY DRUG (SNOMED CT DM+D) Multiple occurrences of this item are permitted
M	ANTIRETROVIRAL THERAPY DRUG REGIMEN GROUP CODE
R	ANTIRETROVIRAL THERAPY HOME DELIVERY INDICATOR
R	CLINICAL TRIAL INDICATOR

CLINICAL INFORMATION

To carry clinical information details for the patient. One occurrence of this group is required.	
M/R/O	Data Set Data Elements
M	CD4 CELL COUNT PERFORMED INDICATOR
R	CD4 CELL COUNT
M	VIRAL LOAD COUNT PERFORMED INDICATOR
R	VIRAL LOAD COUNT
R	AIDS DEFINING ILLNESS TYPE Multiple occurrences of this item are permitted
R	AIDS DEFINING ILLNESS CODE ADULT (SNOMED CT) Multiple occurrences of this item are permitted
M	PATIENT DIAGNOSIS INDICATOR (VIRAEMIA)
M	TUBERCULOSIS TREATMENT INDICATOR (HIV)
M	CHRONIC VIRAL LIVER DISEASE INDICATOR (HIV)
M	HEPATITIS B INFECTION INDICATOR
M	HEPATITIS C INFECTION INDICATOR
M	CHRONIC VIRAL LIVER DISEASE TREATMENT INDICATOR (HIV)
M	HEPATITIS B INFECTION INDICATION CODE
M	HEPATITIS C INFECTION INDICATION CODE
M	MALIGNANCY TREATMENT INDICATOR (HIV)
M	PATIENT DIAGNOSIS INDICATOR (HIV END ORGAN DISEASE)
M	PSYCHIATRIC CARE INDICATOR (HIV)
M	PREGNANCY INDICATOR (HIV)
M	SOCIAL WORKER CARE INDICATOR (HIV)
O	LATENT TUBERCULOSIS TEST PERFORMED INDICATOR
R	OFFER STATUS (HUMAN PAPILLOMAVIRUS VACCINATION)

R HUMAN PAPILLOMAVIRUS VACCINATION DOSE GIVEN

DEATH

To carry death details for the patient.
One occurrence of this group is permitted.

M/R/O	Data Set Data Elements
R	PERSON DEATH DATE
R	DEATH CAUSE ICD CODE (CONDITION) Multiple occurrences of this item are permitted
R	DEATH CAUSE ICD CODE (CARE PROFESSIONAL REPORTED) Multiple occurrences of this item are permitted

BRITISH HIV ASSOCIATION

Change to Supporting Information: New Supporting Information

The [British HIV Association](#) (BHIVA) is an [Organisation](#).

The [British HIV Association](#):

- is the leading UK association representing professionals in Human Immunodeficiency Virus (HIV) care
- is committed to providing excellent care for people living with and affected by HIV
- is a national advisory body on all aspects of HIV care
- provides a national platform for HIV care issues.

For further information on the [British HIV Association](#), see the [British HIV Association](#) website at: [About BHIVA](#).

This supporting information is also known by these names:

Context	Alias
shortname	BHIVA

GLOSSARY OF TERMS

Change to Supporting Information: Changed Description

The Glossary lists commonly used terms in alphabetical order. These terms are not defined and therefore do not have a class or attribute. Each entry in the Glossary is shown with its related class and attribute where appropriate.

For example 'Booked Admission' is shown as relating to the class [ELECTIVE ADMISSION LIST ENTRY](#). [ELECTIVE ADMISSION LIST ENTRY](#) has an attribute [ELECTIVE ADMISSION TYPE](#) and reference to the attribute definition will identify that 'Booked Admission' is one of the national code classifications of [ELECTIVE ADMISSION TYPES](#).

Class	Attribute
Admission	
Hospital Provider Spell	ACTIVITY DATE of the ACTIVITY DATE TYPE Start Date
Annual Census	
Hospital Provider Spell	ACTIVITY DATE of the ACTIVITY DATE TYPE Start Date
Hospital Provider Spell	ACTIVITY DATE of the ACTIVITY DATE TYPE Discharge Date

PATIENT DIAGNOSIS	
Booked Admission	
ELECTIVE ADMISSION LIST ENTRY	ELECTIVE ADMISSION TYPE
Code of General Practitioner	
GENERAL MEDICAL PRACTITIONER	GENERAL MEDICAL PRACTITIONER PPD CODE
GENERAL DENTAL PRACTITIONER	GENERAL DENTAL PRACTITIONER CODE
Consultant Code	
CONSULTANT	CONSULTANT CODE
Consultant Name	
PERSON NAME	
Day Case Admission	
Hospital Provider Spell	PATIENT CLASSIFICATION
Diagnostic Services	
Pathology Department	
Radiology Department	
Isotope Procedure Department	
Physiological Measurement Department	
Discharge	
Hospital Provider Spell	ACTIVITY DATE of the ACTIVITY DATE TYPE Discharge Date
Emergency Admission	
Hospital Provider Spell	ADMISSION METHOD
General Practitioner Name	
PERSON NAME	
GMC or GDC Reference Number	
CARE PROFESSIONAL	CARE PROFESSIONAL IDENTIFIER
Local Patient Identifier	
PATIENT ORGANISATION	LOCAL PATIENT IDENTIFIER
Maternity Admission	
Hospital Provider Spell	ADMISSION METHOD
Neonate	
PATIENT	
Nurse Identifier	
CARE PROFESSIONAL	CARE PROFESSIONAL IDENTIFIER
Nurse Name	
PERSON NAME	
Ordinary Admission	
Hospital Provider Spell	PATIENT CLASSIFICATION
Organisation Postcode	
ADDRESS	POSTCODE
ADDRESS ASSOCIATION	
Organisation Address	
ADDRESS ASSOCIATION	ADDRESS ASSOCIATION TYPE
Patient Name	
PERSON NAME	
Patients Usual Address	
ADDRESS ASSOCIATION	ADDRESS ASSOCIATION TYPE
Planned Admission	
ELECTIVE ADMISSION LIST ENTRY	ELECTIVE ADMISSION TYPE

Postcode of Usual Address	
ADDRESS	POSTCODE
Regular Day Admission	
Hospital Provider Spell	PATIENT CLASSIFICATION
Sex	
PERSON GENDER	PERSON GENDER CODE
PERSON GENDER CODE CURRENT	
PERSON GENDER CODE AT REGISTRATION	
Telephone Number	
COMMUNICATION CONTACT INFORMATION	COMMUNICATION CONTACT METHOD
	COMMUNICATION CONTACT STRING
TCI (To Come In Date)	
OFFER OF ADMISSION	OFFERED FOR ADMISSION DATE
Waiting List Admission	
ELECTIVE ADMISSION LIST ENTRY	ELECTIVE ADMISSION TYPE
Ward Transfer	
Ward Stay	ACTIVITY DATE of the ACTIVITY DATE TYPE End Date

HIV AND AIDS REPORTING DATA SET OVERVIEW

Change to Supporting Information: Changed Description

Background:

The scope of the [HIV and AIDS Reporting Data Set](#) is all [PATIENTS](#) who are newly diagnosed with Human Immunodeficiency Virus (HIV) or newly transferred to other [Health Care Providers](#). The scope of the [HIV and AIDS Reporting Data Set](#) is all [PATIENTS](#) who are diagnosed with Human Immunodeficiency Virus (HIV) and receive HIV care from [Health Care Providers](#).

NHS [Health Care Providers](#) are required to generate the [HIV and AIDS Reporting Data Set](#).

The [HIV and AIDS Reporting Data Set](#) is used to:

- The [HIV and AIDS Reporting Data Set](#) is used to:
- Identify the groups at risk of HIV infection in England
- Monitor the short and long term clinical outcomes of people living with HIV infection
- Monitor the effectiveness of the national policies and guidance
- Adapt and refine interventions, as appropriate.

Secondary analyses of aggregate outputs from the [HIV and AIDS Reporting Data Set](#) will be used to:

- Support the commissioning of [HIV Services](#) through collation of data to inform the national HIV outpatient tariff for the [National Tariff Payment System](#)
- Conduct performance management at the [Local Authority](#) and national level.

For further information on Acquired Immune Deficiency Syndrome (AIDS) and Human Immunodeficiency Virus (HIV), see the [Public Health England website](#). For further information on Acquired Immune Deficiency Syndrome (AIDS) and Human Immunodeficiency Virus (HIV), see the [Public Health England](#) part of the [gov.uk website](#).

Time period:

The extract covers one calendar quarter.

Frequency:

The [HIV and AIDS Reporting Data Set](#) is attendance based and should be submitted quarterly, 6 weeks after the end of the quarter. The [HIV and AIDS Reporting Data Set](#) is attendance based and should be submitted quarterly, 2 weeks after the end of the quarter.

Format:

Data for submission will be formatted into an xml file as per the [HIV and AIDS Reporting Data Set](#) XML Schema.

Transmission:

Submissions should be transmitted to [Public Health England](#) through a secure web portal on the [Public Health England](#) (PHE) website, using the [HARS](#) Data Set XML Schema.

The web portal enables [Organisations](#) to submit data files in a secure manner to the HIV and STI Department of [Public Health England](#) across the internet and can be found at [HIV & STI web portal](#).

For further information on the [HIV and AIDS Reporting Data Set](#), see the [Public Health England website](#). For further information on the [HIV and AIDS Reporting Data Set](#), see the [Public Health England](#) part of the gov.uk website at: [HIV surveillance systems](#).

HIV CLINIC ATTENDANCE

Change to Supporting Information: Changed Description

A [HIV Clinic Attendance](#) is a [CARE CONTACT](#).

A [HIV Clinic Attendance](#) is contact made by a [Health Care Provider](#) with a [PATIENT](#) for Human Immunodeficiency Virus (HIV) treatment or care. This could be a consultation face to face, by email or telephone.

The email or telephone consultation should directly support diagnosis and care planning and must replace a face to face [HIV Clinic Attendance](#). If the consultation is by email or telephone, it should directly support [PATIENT DIAGNOSIS](#) and care planning and must replace a face to face [HIV Clinic Attendance](#).

If a [PATIENT](#) has contact with or sees more than one health [CARE PROFESSIONAL](#) during a [HIV Clinic Attendance](#) on the same day this is counted as one [HIV Clinic Attendance](#).

REFERENCED ORGANISATIONS MENU

Change to Supporting Information: Changed Description

- [NHS Business Definitions](#)
- [Organisations](#)
- [Regulatory Bodies](#)
- **Referenced Organisations:**
 - [American Joint Committee on Cancer](#)
 - [British Association for Paediatric Nephrology](#)
 - [British Psychological Society](#)
 - [British Renal Society](#)
 - [British Transplantation Society](#)
 - [Burden Advice and Assessment Service](#)

- [Care Quality Commission](#)
- [Community Health Partnership \(Scotland\)](#)
- [Community Safety Partnership](#)
- [Department for Education](#)
- [Department for Work and Pensions](#)
- [Department for Work and Pensions Overseas Healthcare Team](#)
- [Department of Health](#)
- [European Renal Association](#)
- [Faculty of General Dental Practice \(UK\)](#)
- [GS1](#)
- [Health and Wellbeing Board](#)
- [Health Education England](#)
- [Health Research Authority](#)
- [Healthcare Quality Improvement Partnership](#)
- [Healthwatch England](#)
- [Improving Access to Psychological Therapies Programme](#)
- [Information Standards Board for Health and Social Care](#)
- [International Commission on Radiation Units and Measurements](#)
- [International Federation of Gynecology and Obstetrics](#)
- [International Health Terminology Standards Development Organisation](#)
- [International Society of Paediatric Oncology](#)
- [Local Health Board \(Wales\)](#)
- [Local Healthwatch](#)
- [Medicines and Healthcare Products Regulatory Agency](#)
- [National Cancer Registration and Analysis Service](#)
- [National Casemix Office](#)
- [National Contact Point](#)
- [National Commissioning Group](#)
- [National Information Board](#)
- [National Institute for Health and Care Excellence](#)
- [National Joint Registry](#)
- [National Kidney Federation](#)
- [National Specialised Commissioning Group](#)
- [Neonatal Data Analysis Unit](#)
- [NHS Business Services Authority](#)
- [NHS Dental Services](#)
- [NHS Digital](#)
- [NHS England](#)
- [NHS Improvement](#)
- [NHS Prescription Services](#)
- [NHS Wales Informatics Service](#)
- [Northern Ireland Local Commissioning Group](#)
- [Office for National Statistics](#)
- [Ofsted](#)
- [Public Health England](#)
- [Royal College of General Practitioners](#)
- [Royal Pharmaceutical Society](#)
- [Standardisation Committee for Care Information](#)
- [Sustainable Development Unit](#)
- [The Renal Association](#)
- [The Royal Marsden](#)
- [UK National Screening Committee](#)
- [UK Renal Registry](#)
- [UK Terminology Centre](#)
- [Union for International Cancer Control](#)
- [United Kingdom and Ireland Association of Cancer Registries](#)
- [World Health Organisation](#)

- **Referenced Organisations:**

- [American Joint Committee on Cancer](#)
- [British Association for Paediatric Nephrology](#)
- [British HIV Association](#)
- [British Psychological Society](#)
- [British Renal Society](#)
- [British Transplantation Society](#)
- [Burden Advice and Assessment Service](#)
- [Care Quality Commission](#)
- [Community Health Partnership \(Scotland\)](#)
- [Community Safety Partnership](#)
- [Department for Education](#)
- [Department for Work and Pensions](#)
- [Department for Work and Pensions Overseas Healthcare Team](#)
- [Department of Health](#)
- [European Renal Association](#)
- [Faculty of General Dental Practice \(UK\)](#)
- [GS1](#)
- [Health and Wellbeing Board](#)
- [Health Education England](#)
- [Health Research Authority](#)
- [Healthcare Quality Improvement Partnership](#)
- [Healthwatch England](#)
- [Improving Access to Psychological Therapies Programme](#)
- [Information Standards Board for Health and Social Care](#)
- [International Commission on Radiation Units and Measurements](#)
- [International Federation of Gynecology and Obstetrics](#)
- [International Health Terminology Standards Development Organisation](#)
- [International Society of Paediatric Oncology](#)
- [Local Health Board \(Wales\)](#)
- [Local Healthwatch](#)
- [Medicines and Healthcare Products Regulatory Agency](#)
- [National Cancer Registration and Analysis Service](#)
- [National Casemix Office](#)
- [National Contact Point](#)
- [National Commissioning Group](#)
- [National Information Board](#)
- [National Institute for Health and Care Excellence](#)
- [National Joint Registry](#)
- [National Kidney Federation](#)
- [National Specialised Commissioning Group](#)
- [Neonatal Data Analysis Unit](#)
- [NHS Business Services Authority](#)
- [NHS Dental Services](#)
- [NHS Digital](#)
- [NHS England](#)
- [NHS Improvement](#)
- [NHS Prescription Services](#)
- [NHS Wales Informatics Service](#)
- [Northern Ireland Local Commissioning Group](#)
- [Office for National Statistics](#)
- [Ofsted](#)
- [Public Health England](#)
- [Royal College of General Practitioners](#)
- [Royal Pharmaceutical Society](#)
- [Standardisation Committee for Care Information](#)
- [Sustainable Development Unit](#)

- [The Renal Association](#)
- [The Royal Marsden](#)
- [UK National Screening Committee](#)
- [UK Renal Registry](#)
- [UK Terminology Centre](#)
- [Union for International Cancer Control](#)
- [United Kingdom and Ireland Association of Cancer Registries](#)
- [World Health Organisation](#)

SEXUAL HEALTH AND HIV EPISODE

Change to Supporting Information: Changed Description

A [Sexual Health and HIV Episode](#) is an [ACTIVITY GROUP](#).

A [Sexual Health and HIV Episode](#) is an episode of care, under one [Health Care Provider](#), comprising of one or more attendances, where a [CONSULTANT](#) has overall responsibility for the [PATIENT](#) who attends for screening, diagnosis and management of sexually transmissible infections and related conditions. The [PATIENT](#) may be seen by other [CARE PROFESSIONALS](#), during the same care episode, who are working on behalf of the [CONSULTANT](#).

The episode starts on the date the [PATIENT](#) first sees or is in contact with a [CARE PROFESSIONAL](#) in respect of a [REFERRAL REQUEST](#) from either a [Health Care Provider](#) or a self referral.

The episode ends when either the [PATIENT](#) is formally discharged or has not had face to face contact with the [SERVICE](#) for at least six months.


Each [Sexual Health and HIV Episode](#) may be for one or more [SEXUAL HEALTH AND HIV ACTIVITY PROPERTY TYPES](#) and each [SEXUAL HEALTH AND HIV ACTIVITY PROPERTY TYPE](#) is recorded at a first attendance. The only exception to this is where the [PATIENT](#) attends for HIV-related care in which case the relevant [SEXUAL HEALTH AND HIV ACTIVITY PROPERTY TYPE](#) should be recorded at every attendance.

Information recorded for a [Sexual Health and HIV Episode](#) includes:

[EPISODE NUMBER](#)

[End Date](#) 

[SEXUAL HEALTH AND HIV ACTIVITY PROPERTY TYPE](#)

[PATIENT EXPOSURE TO HIV](#)  (mandatory for certain sexually transmitted diseases)

[Start Date](#)

ACTIVITY GROUP

Change to Class: Changed Attributes

Attributes of this Class are:

- A and E INCIDENT LOCATION TYPE
- A and E PATIENT GROUP
- ACTIVITY GROUP TYPE
- ADMISSION METHOD
- ASSAULT METHOD
- BABY FIRST FEED BREAST MILK STATUS
- BREASTFEEDING STATUS
- CANCER OR SYMPTOMATIC BREAST REFERRAL PATIENT STATUS
- CANCER REFERRAL TO TREATMENT PERIOD START DATE
- CANCER SCREENING STATUS
- CANCER TREATMENT INTENT

CANCER TREATMENT PERIOD START DATE
CARE PROGRAMME APPROACH REVIEW ABUSE QUESTION ASKED INDICATOR
CARER RESIDENT INDICATION CODE FOR NATIONAL NEONATAL DATA SET
CHILDREN TEENAGERS AND YOUNG ADULTS AGE CATEGORY
COMMUNITY TREATMENT ORDER END REASON
COMPLEX SOCIAL FACTORS INDICATOR
DAUGHTER BORN AT THIS ENCOUNTER INDICATOR
DELIVERY PLACE CHANGE REASON
DISCHARGE DESTINATION
DISCHARGED TO HOSPITAL AT HOME SERVICE INDICATOR
DISCHARGE METHOD
ESTIMATED DATE OF DELIVERY
ESTIMATED DATE OF DELIVERY METHOD
FEMALE GENITAL MUTILATION AGE CATEGORY
FIRST REGULAR DAY OR NIGHT ADMISSION
IMPROVING ACCESS TO PSYCHOLOGICAL THERAPIES CARE SPELL END CODE
IMPROVING ACCESS TO PSYCHOLOGICAL THERAPIES OPT IN DATE
IMPROVING ACCESS TO PSYCHOLOGICAL THERAPIES STEPPED CARE INTENSITY DELIVERED
IN LABOUR BEFORE CAESARIAN SECTION INDICATOR
INTENDED DELIVERY PLACE
INTRAVESICAL CHEMOTHERAPY RECEIVED INDICATOR
INTRAVESICAL IMMUNOTHERAPY RECEIVED INDICATOR
KEY WORKER SEEN INDICATOR
LENGTH OF STAY ADJUSTMENT
LENGTH OF STAY ADJUSTMENT REASON
MATERNAL CRITICAL INCIDENT TYPE
MECONIUM PRESENT IN LIQUOR INDICATOR
MENTAL HEALTH ABSOLUTE DISCHARGE RESPONSIBILITY
MENTAL HEALTH CONDITIONAL DISCHARGE END REASON
MENTAL HEALTH DELAYED DISCHARGE ATTRIBUTABLE TO INDICATION CODE
MENTAL HEALTH DELAYED DISCHARGE REASON
MONITORING INTENT
MOTHER ANTENATALLY BOOKED INDICATOR
NEONATAL CRITICAL INCIDENT TYPE
NEONATAL LEVEL OF CARE
NON SMOKING CONFIRMATION STATUS AT 4 WEEKS
ORGAN OR TISSUE UNSUITABLE ORGAN CODE RENAL TRANSPLANT
OUTCOME AT 4 WEEK FOLLOW-UP
PAEDIATRIC NEPHROLOGY REGISTRY STATUS CODE
PALLIATIVE CARE SPECIALIST SEEN INDICATOR
PALLIATIVE TREATMENT REASON CODE FOR UPPER GASTROINTESTINAL
PATIENT CLASSIFICATION
PATIENT RECEIVING ONE TO ONE NURSING CARE INDICATOR
PHARMACOTHERAPY STOP SMOKING AID RECEIVED
PREGNANCY OUTCOME CODE
PREGNANCY PREVIOUS CAESAREAN SECTIONS
PREGNANCY TOTAL LIVE BIRTHS
PREGNANCY TOTAL PREVIOUS LOSSES LESS THAN 24 WEEKS
PREGNANCY TOTAL PREVIOUS PREGNANCIES
PREGNANCY TOTAL STILL BIRTHS
~~PREVIOUS NEGATIVE HIV TEST IN UNITED KINGDOM INDICATOR~~
PREVIOUS NEGATIVE HIV TEST INDICATOR
RADIOTHERAPY INTENT
RENAL DIALYSIS SCHEDULE TYPE
SMOKING QUIT DATE

SOURCE OF ADMISSION
TIME BETWEEN DELIVERY AND SPONTANEOUS RESPIRATION CODE
TREATMENT START DATE FOR CANCER

CARE CONTACT

Change to Class: Changed Attributes

Attributes of this Class are:

A and E ATTENDANCE CATEGORY
A and E INITIAL ASSESSMENT TRIAGE CATEGORY
A and E STREAM
ACCIDENT AND EMERGENCY ARRIVAL MODE
ACCIDENT AND EMERGENCY ATTENDANCE DISPOSAL
ANTIRETROVIRAL THERAPY DRUG REGIMEN GROUP CODE
ANTIRETROVIRAL THERAPY HOME DELIVERY INDICATOR
~~ANTIRETROVIRAL THERAPY REGIMEN GROUP CODE~~
BRIEF INTERVENTION PROVIDED INDICATOR
BRIEF INTERVENTION TYPE FOR NHS HEALTH CHECK
CARE CONTACT CANCELLATION REASON
CARE CONTACT SUBJECT
CARE CONTACT TYPE
CHILD DIFFICULT TO TEST REASON
CLINICAL NURSE SPECIALIST INDICATION CODE
CLINIC ATTENDANCE PURPOSE CODE FOR HIV
COLPOSCOPY PRIME PROCEDURE TYPE
CONSULTATION MEDIUM USED
CONSULTATION TYPE
CONTRACEPTIVE SERVICE TYPE
DECISION TO UNDERTAKE FURTHER ASSESSMENT INDICATOR
DIETARY ADVICE REASON CODE
EMPLOYMENT SUPPORT SUITABILITY INDICATOR
FACE TO FACE COMMUNICATION MODE
FEMALE GENITAL MUTILATION IDENTIFICATION METHOD CODE
FIRST ANTIRETROVIRAL THERAPY IN THE UNITED KINGDOM INDICATOR
FIRST ATTENDANCE
FURTHER ASSESSMENT TYPE FOR NHS HEALTH CHECK
HOLISTIC NEEDS ASSESSMENT POINT OF PATHWAY FOR CANCER
INFORMATION AND ADVICE PROVIDED INDICATOR
INFORMATION AND ADVICE TYPE PROVIDED FOR FEMALE GENITAL MUTILATION
INFORMATION AND ADVICE TYPE PROVIDED FOR NHS HEALTH CHECK
INITIAL CONTACT INDICATOR
~~INITIAL DIAGNOSIS CARE SETTING FOR HIV~~
INITIAL DIAGNOSIS CARE SETTING OR SERVICE FOR HIV
MEDICAL STAFF TYPE SEEING PATIENT
METASTATIC STATUS
MULTIPROFESSIONAL OR MULTIDISCIPLINARY INDICATION CODE
NEW HIV DIAGNOSIS IN UNITED KINGDOM INDICATOR
OTHER PERSON IN ATTENDANCE AT CARE CONTACT
OUTCOME OF ATTENDANCE
PATIENT EXPOSURE TO HIV
PATIENT HIV CARE STATUS
PATIENT TRIAL STATUS FOR CANCER
~~POST AND/OR PRE EXPOSURE PROPHYLAXIS CODE~~
POST EXPOSURE PROPHYLAXIS INDICATOR

POSTNATAL CARE INDICATOR
PRE EXPOSURE PROPHYLAXIS INDICATOR
PREGNANCY INDICATOR FOR HIV
PSYCHIATRIC CARE INDICATOR FOR HIV
SIGNPOSTING TO SERVICE INDICATOR
SIGNPOSTING TO SERVICE TYPE FOR NHS HEALTH CHECK
SKIN TO SKIN CONTACT INDICATOR
SOCIAL WORKER CARE INDICATOR FOR HIV
SUBJECTIVE GLOBAL ASSESSMENT
THERAPY TYPE FOR IMPROVING ACCESS TO PSYCHOLOGICAL THERAPIES
TWO YEAR NEONATAL OUTCOMES ASSESSMENT NOT CARRIED OUT REASON

CARE PROFESSIONAL

Change to Class: Changed Attributes

Attributes of this Class are:

K CARE PROFESSIONAL IDENTIFIER
CARE PROFESSIONAL FIRST ASSISTANT GRADE FOR JOINT REPLACEMENT
CARE PROFESSIONAL LEAD OPERATING SURGEON GRADE FOR JOINT REPLACEMENT
CARE PROFESSIONAL RETRIEVING SURGEON GRADE
CARE PROFESSIONAL SENIOR OPERATING SURGEON GRADE FOR CANCER
CARE PROFESSIONAL STAFF GROUP FOR COMMUNITY CARE
CARE PROFESSIONAL STAFF GROUP FOR MENTAL HEALTH
CARE PROFESSIONAL SURGEON GRADE FOR CANCER
CARE PROFESSIONAL TYPE CODE
CARE PROFESSIONAL TYPE FOR HIV
JOB ROLE CLINICIAN TYPE FOR ORGAN DONATION
PRIVATE CONTROLLED DRUG PRESCRIBER CODE
REFERRING CARE PROFESSIONAL STAFF GROUP FOR MENTAL HEALTH AND COMMUNITY CARE

CATEGORY VALUED PERSON OBSERVATION

Change to Class: Changed Attributes

Attributes of this Class are:

BREAST SCREENING HIGH RISK CATEGORY
CATEGORY VALUED PERSON OBSERVATION TYPE
MENTAL CATEGORY
MENTAL HEALTH ACT 2007 MENTAL CATEGORY
~~PERSON GENDER TYPE~~

CLINICAL INTERVENTION

Change to Class: Changed Attributes

Attributes of this Class are:

ABDOMINAL XRAY PERFORMED REASON
ABDOMINAL XRAY PERFORMED TO INVESTIGATE ABDOMINAL SIGNS INDICATOR
ABLATIVE THERAPY TYPE
ACCIDENT AND EMERGENCY INVESTIGATION
ACCIDENT AND EMERGENCY TREATMENT
ANAESTHESIA TYPE IN LABOUR AND DELIVERY
ANAESTHETIC METHOD TYPE FOR DIALYSIS ACCESS CONSTRUCTION
ANAESTHETIC TYPE FOR JOINT REPLACEMENT

ANTI CANCER REGIMEN NUMBER
ARTERIOVENOUS GRAFT MATERIAL TYPE
ARTHROPLASTY REVISION TYPE
ARTIFICIAL RUPTURE OF MEMBRANES REASON CODE
ASA PHYSICAL STATUS CLASSIFICATION SYSTEM CODE
ASSOCIATED PROCEDURE TYPE FOR ANKLE REPLACEMENT
BILIARY STENT INSERTION REASON
BIOLOGICAL RESURFACING TYPE FOR SHOULDER REPLACEMENT
BLOOD FLOW RATE
BLOOD TRANSFUSION PRODUCT TYPE
BLOOD TRANSFUSION TYPE
BLOOD TRANSFUSION UNITS TRANSFUSED
BONE GRAFT INDICATION CODE FOR REVISION ANKLE REPLACEMENT
BONE GRAFT INDICATOR FOR JOINT REPLACEMENT
BONE GRAFT TYPE FOR REVISION ANKLE REPLACEMENT
BRACHYTHERAPY TYPE
BREAST ASSESSMENT OUTCOME
BREAST SCREENING TEST OUTCOME
CANCER IMAGING MODALITY
CANCER TREATMENT MODALITY
CHEMICAL THROMBOPROPHYLAXIS REGIME TYPE
CHEMO RADIATION INDICATOR
CHEMOTHERAPY ACTUAL DOSE
CHEST DRAIN IN SITU INDICATOR
CLINICAL INTERVENTION TYPE
CLINICAL INVESTIGATION NOT PERFORMED REASON CODE FOR MATERNITY
CO MORBIDITY ADJUSTMENT INDICATOR
COMPLICATION TYPE FOR RENAL DIALYSIS ACCESS
COMPONENT REMOVAL INDICATOR
CONTINUOUS INFUSION OF PULMONARY VASODILATOR RECEIVED INDICATOR
CONTINUOUS POSITIVE AIRWAY PRESSURE DELIVERY MODE
CONTRACEPTION METHOD STATUS
CYTOLOGY SCREENING ACTION TYPE
DEINFIBULATION UNDERTAKEN REASON
DELIVERED IN WATER INDICATOR
DELIVERY INSTRUMENT TYPE
DELIVERY OF PLACENTA METHOD
DRUG ADMINISTRATION DURATION
DRUG ADMINISTRATION STATUS
DRUG DAYS SUPPLY
DRUG DOSAGE AND ADMIN SPECIFICATION
DRUG IDENTIFICATION
DRUG INFORMATION COMMENT
DRUG INFORMATION TYPE
DRUG QUANTITY SUPPLIED
DRUG REGIMEN ACRONYM
DRUG TREATMENT INTENT
ENDOSCOPIC OR RADIOLOGICAL COMPLICATION TYPE
ENDOSCOPIC PROCEDURE TYPE
ENTERAL FEEDING METHOD
ENTERAL FEED TYPE GIVEN
EPISIOTOMY PERFORMED REASON CODE
EXCISION TYPE
FETAL ORDER
FIRST DEFINITIVE TREATMENT PROVIDED

FIXATION TYPE FOR ELBOW OR SHOULDER REPLACEMENT
FORMULA MILK OR MILK FORTIFIER TYPE
FRACTION NUMBER
HIP SURGERY PATIENT POSITION
HUMAN PAPILLOMAVIRUS VACCINATION DOSE GIVEN
IMAGE GUIDED SURGERY INDICATOR
IMAGING ANATOMICAL SITE
IMAGING INTERVENTION INDICATOR
IMAGING MODALITY
IMAGING OR RADIODIAGNOSTIC EVENT INDICATION CODE FOR RENAL CARE
INFECTION CULTURE TEST INDICATOR
INTERVENTION SESSION TYPE
INTRAPARTUM ANTIBIOTICS GIVEN INDICATOR
JOINT REPLACEMENT REVISION REASON CODE FOR ANKLE
JOINT REPLACEMENT REVISION REASON CODE FOR ELBOW
JOINT REPLACEMENT REVISION REASON CODE FOR HIP
JOINT REPLACEMENT REVISION REASON CODE FOR KNEE
JOINT REPLACEMENT REVISION REASON CODE FOR SHOULDER
KIDNEY TRANSPLANTED CODE
LABOUR FIRST STAGE LENGTH
LABOUR OR DELIVERY ONSET METHOD
LABOUR SECOND STAGE LENGTH
LAPAROTOMY FOR NECROTISING ENTEROCOLITIS INDICATION CODE
LONG HEAD BICEPS TENOTOMY INDICATOR
MARGIN INVOLVED INDICATION CODE
MECHANICAL THROMBOPROPHYLAXIS REGIME TYPE
MINIMALLY INVASIVE SURGERY INDICATOR
MORE THAN THREE RECTAL WASHOUTS RECEIVED INDICATOR
NEOADJUVANT THERAPY INDICATOR
NEONATAL RESUSCITATION METHOD
NEONATAL RESUSCITATION METHOD FOR NATIONAL NEONATAL DATA SET
NEPHRECTOMY TYPE
NEURODEVELOPMENTAL ASSESSMENT ALREADY TAKEN INDICATOR
NEWBORN HEARING INCOMPLETE REASON CODE
NEWBORN HEARING SCREENING TEST TYPE
NITRIC OXIDE GIVEN INDICATOR
NUMBER OF TELETHERAPY FIELDS
OBSERVATION SCHEME IN USE
OPPORTUNISTIC SCREENING TYPE
PAIN RELIEF TYPE IN LABOUR AND DELIVERY
PARENTAL CONSENT TO ADMINISTER VITAMIN K INDICATOR
PARENTAL CONSENT TO POST MORTEM INDICATOR
PARENTERAL NUTRITION RECEIVED INDICATOR
PATHOLOGY INVESTIGATION PRIORITY
PATHOLOGY RESULT REPORTED DATE
PATIENT PROCEDURE PERFORMED INDICATOR
PATIENT PROCEDURE TYPE FOR PRIMARY ANKLE REPLACEMENT
PATIENT PROCEDURE TYPE FOR PRIMARY ELBOW REPLACEMENT
PATIENT PROCEDURE TYPE FOR PRIMARY HIP REPLACEMENT
PATIENT PROCEDURE TYPE FOR PRIMARY KNEE REPLACEMENT
PATIENT PROCEDURE TYPE FOR PRIMARY SHOULDER REPLACEMENT
PATIENT PROCEDURE TYPE FOR REVISION ANKLE REPLACEMENT
PATIENT PROCEDURE TYPE FOR REVISION ELBOW REPLACEMENT
PATIENT PROCEDURE TYPE FOR REVISION HIP REPLACEMENT
PATIENT PROCEDURE TYPE FOR REVISION KNEE REPLACEMENT

PATIENT PROCEDURE TYPE FOR REVISION SHOULDER REPLACEMENT
PATIENT SPECIFIC INSTRUMENTS INDICATOR FOR KNEE REPLACEMENT
PERFORATIONS OR SEROSAL INVOLVEMENT INDICATION CODE
PERITONEAL DIALYSIS CATHETER INSERTION TECHNIQUE
PERITONEAL DIALYSIS CATHETER TYPE
PERITONEAL DIALYSIS TREATMENT REGIME
PLANE OF SURGICAL EXCISION TYPE
PLANNED TREATMENT CHANGE REASON
POST MORTEM CARRIED OUT INDICATOR
POST MORTEM CONFIRMED NECROTISING ENTEROCOLITIS DIAGNOSIS INDICATOR
POST MORTEM TYPE
PREVIOUS BONY INFECTION INDICATOR OF TIBIA OR HINDFOOT
PREVIOUS FRACTURE INDICATOR FOR ANKLE REPLACEMENT
PREVIOUS SURGERY TYPE FOR ANKLE JOINT
PREVIOUS SURGERY TYPE FOR SHOULDER REPLACEMENT
PRINCIPAL DIAGNOSTIC IMAGING TYPE
PROCEDURE RENAL DIALYSIS ACCESS REPAIR OR REVISION TYPE
PROCEDURE SCHEME IN USE
PROCEDURE SIDE RENAL DIALYSIS ACCESS CONSTRUCTION CODE
PROCEDURE SITE RENAL DIALYSIS ACCESS CONSTRUCTION CODE
RADIOISOTOPE
RADIOLOGICAL PROCEDURE TYPE
RADIOTHERAPY ACTUAL DOSE
RADIOTHERAPY BEAM TYPE
RADIOTHERAPY PRESCRIBED DOSE
RADIOTHERAPY TREATMENT MODALITY
REMOVAL REASON TYPE FOR DIALYSIS ACCESS
RENAL DIALYSIS ACCESS TYPE
RENAL TRANSPLANT FAILURE CAUSE CODE
RENAL TREATMENT MODALITY CHANGE REASON CODE
RENAL TREATMENT MODALITY CODE
RENAL TREATMENT PRIMARY SUPERVISION CODE
REPLOGLE TUBE IN SITU INDICATOR
RESPIRATORY SUPPORT DEVICE TYPE FOR NATIONAL NEONATAL DATA SET
RESPIRATORY SUPPORT MODE FOR NATIONAL NEONATAL DATA SET
RESTRICTIVE INTERVENTION TYPE
RESULT SENT DIRECT
RETINOPATHY OF PREMATURITY SCREENING OUTCOME STATUS CODE
REVISION PROCEDURE TYPE FOR ANKLE OR KNEE REPLACEMENT
REVISION PROCEDURE TYPE FOR ELBOW OR SHOULDER REPLACEMENT
REVISION PROCEDURE TYPE FOR HIP REPLACEMENT
ROTATOR CUFF CONDITION
RUPTURE OF MEMBRANES METHOD
SARCOMA SURGICAL MARGIN
SENTINEL LYMPH NODE BIOPSY TYPE
SIGNIFICANT MATERNAL PYREXIA IN LABOUR INDICATOR
STEM CELL INFUSION DONOR TYPE
STEM CELL INFUSION SOURCE CODE
STENT DEPLOYED SUCCESS INDICATOR
STEROIDS GIVEN DURING PREGNANCY TO MATURE FETAL LUNGS INDICATOR
STOMA PRESENT INDICATOR
SURFACTANT GIVEN INDICATOR
SURGICAL ACCESS TYPE
SURGICAL ACCESS TYPE FOR THORACIC
SURGICAL APPROACH FOR PRIMARY HIP REPLACEMENT

SURGICAL APPROACH FOR PRIMARY KNEE REPLACEMENT
SURGICAL APPROACH FOR PRIMARY OR REVISION ANKLE REPLACEMENT
SURGICAL APPROACH FOR PRIMARY OR REVISION ELBOW REPLACEMENT
SURGICAL APPROACH FOR PRIMARY OR REVISION SHOULDER REPLACEMENT
SURGICAL APPROACH FOR REVISION HIP REPLACEMENT
SURGICAL APPROACH FOR REVISION KNEE REPLACEMENT
SURGICAL COMPLICATION TYPE
SURGICAL PALLIATION TYPE
SURGICAL VOICE RESTORATION PERMANENT VALVE REMOVAL REASON
SYSTEMIC ANTI CANCER THERAPY DRUG ROUTE OF ADMINISTRATION
SYSTEMIC ANTI CANCER THERAPY PROGRAMME NUMBER
SYSTEMIC ANTI CANCER THERAPY REGIMEN MODIFICATION INDICATOR
TELETHERAPY BEAM TYPE
TRACHEOSTOMY TUBE IN SITU INDICATOR
TREATMENT TYPE FOR NECROTISING ENTEROCOLITIS
TREATMENT TYPE FOR PATENT DUCTUS ARTERIOSUS
UNPLANNED OPERATION INDICATOR
UNTOWARD INTRAOPERATIVE EVENT CODE FOR ANKLE REPLACEMENT
UNTOWARD INTRAOPERATIVE EVENT CODE FOR ELBOW REPLACEMENT
UNTOWARD INTRAOPERATIVE EVENT CODE FOR HIP REPLACEMENT
UNTOWARD INTRAOPERATIVE EVENT CODE FOR KNEE REPLACEMENT
UNTOWARD INTRAOPERATIVE EVENT CODE FOR SHOULDER REPLACEMENT
VASCULAR LINE TYPE IN SITU
VISUAL INSPECTION CONFIRMED NECROTISING ENTEROCOLITIS DURING LAPAROTOMY INDICATOR
VITAMIN K ADMINISTERED INDICATOR
VITAMIN K ROUTE OF ADMINISTRATION

OTHER PERSON OBSERVATION

Change to Class: Changed Attributes

Attributes of this Class are:

ALCOHOL WEEKLY UNITS
ESTIMATED ENERGY INTAKE
ESTIMATED PHOSPHATE INTAKE
ESTIMATED POTASSIUM INTAKE
ESTIMATED PROTEIN INTAKE
ESTIMATED SALT INTAKE
~~NUMBER OF HIV CONTACTS~~
~~YEAR AND MONTH FIRST STARTED ANTIRETROVIRAL THERAPY~~
~~YEAR AND MONTH OF LAST NEGATIVE HIV TEST IN UNITED KINGDOM~~
YEAR AND MONTH OF SYMPTOMS ONSET FOR IMPROVING ACCESS TO PSYCHOLOGICAL THERAPIES
~~YEAR OF DIAGNOSIS OUTSIDE UNITED KINGDOM FOR HIV~~

PATIENT DIAGNOSIS

Change to Class: Changed Attributes

Attributes of this Class are:

ACCIDENT AND EMERGENCY DIAGNOSIS
~~AIDS DEFINING ILLNESS TYPE~~
BABY COMPLICATION AT BIRTH DIAGNOSIS
BASIS OF DIAGNOSIS FOR CANCER

BREAST CANCER INVASIVE STATUS
CEREBRAL PALSY TYPE CODE FOR NATIONAL NEONATAL DATA SET
CYTOMEGALOVIRUS DISEASE CODE
DIABETES TYPE FOR RENAL CARE
DIAGNOSIS SCHEME IN USE
FEMALE GENITAL MUTILATION TYPE 4 CODE
FETAL ANOMALY DIAGNOSIS
HISTOLOGY CONFIRMED NECROTISING ENTEROCOLITIS FOLLOWING LAPAROTOMY INDICATOR
HISTORY OF FEMALE GENITAL MUTILATION INDICATOR
HYPOXIC ISCHEMIC ENCEPHALOPATHY GRADE
LONG TERM PHYSICAL HEALTH CONDITION INDICATOR FOR IMPROVING ACCESS TO
PSYCHOLOGICAL THERAPIES
MATERNITY COMPLICATING MEDICAL DIAGNOSIS
MATERNITY FAMILY HISTORY DIAGNOSIS TYPE
MATERNITY MEDICAL DIAGNOSIS TYPE
NEONATAL ABSTINENCE SYNDROME OBSERVED INDICATOR
NEONATAL DIAGNOSIS
OBSTETRIC DIAGNOSIS
PATIENT DIAGNOSIS CODING SIGNIFICANCE
PATIENT DIAGNOSIS INDICATION FOR PRIMARY ANKLE REPLACEMENT
PATIENT DIAGNOSIS INDICATION FOR PRIMARY ELBOW REPLACEMENT
PATIENT DIAGNOSIS INDICATION FOR PRIMARY HIP REPLACEMENT
PATIENT DIAGNOSIS INDICATION FOR PRIMARY KNEE REPLACEMENT
PATIENT DIAGNOSIS INDICATION FOR PRIMARY SHOULDER REPLACEMENT
PATIENT DIAGNOSIS INDICATOR
~~PATIENT DIAGNOSIS TYPE FOR HIV~~
PATIENT DIAGNOSIS TYPE FOR NHS HEALTH CHECK
POST HAEMORRHAGIC HYDROCEPHALUS OBSERVED DURING CRANIAL ULTRASOUND SCAN
INDICATOR
PRESENT ON ADMISSION INDICATOR
PRIMARY DIAGNOSIS
PROVISIONAL DIAGNOSIS
RENAL DONOR DIAGNOSIS TYPE
RENAL LIVING DONOR DIAGNOSIS TYPE
RENAL PAEDIATRIC DIAGNOSIS TYPE
RENAL RECIPIENT CARDIOVASCULAR COMPLICATION TYPE
RENAL RECIPIENT DIAGNOSIS TYPE
SEIZURE OCCURRED INDICATOR
SEPSIS SUSPECTED INDICATOR
SKIN CANCER LESION DIAGNOSIS
TRAUMATIC LESION OF GENITAL TRACT TYPE CODE
TUMOUR OR LESION LATERALITY

PERSON

Change to Class: Changed Attributes

Attributes of this Class are:

K PERSON IDENTIFIER
EX BRITISH ARMED FORCES INDICATOR
LOOKED AFTER CHILD INDICATOR
NATIONAL INSURANCE NUMBER
PERSON BIRTH DATE
PERSON BIRTH TIME
PRISONER INDICATOR

SEX WORKER INDICATOR
YEAR OF BIRTH
YEAR OF UK ENTRY

PERSON NAME

Change to Class: Changed Attributes

Attributes of this Class are:

PERSON NAME CLASSIFICATION
PERSON NAME END DATE
PERSON NAME START DATE
~~PERSON NAME WORD TEXT~~
~~PERSON NAME WORD TYPE~~

PERSON NAME STRUCTURED

Change to Class: Changed Attributes

~~This class has no attributes.~~ Attributes of this Class are:

PERSON NAME WORD TEXT
PERSON NAME WORD TYPE

PRESCRIBED ITEM

Change to Class: Changed Attributes

Attributes of this Class are:

K PRESCRIBED ITEM IDENTIFIER
~~ANTIRETROVIRAL THERAPY DRUG PRESCRIBED CODE~~
~~CYTOMEGALOVIRUS MEDICATION TYPE CODE~~
~~PERITONEAL DIALYSIS FLUID MANUFACTURERS NAME~~
~~PRESCRIBED DOSE~~
~~PRESCRIBED ITEM QUANTITY~~
~~PRESCRIBED NUMBER OF DOSES PER PERIOD~~
~~RENAL DIALYSIS MEDICATION TYPE~~
~~RENAL MEDICATION TYPE~~
~~THROMBOSIS PREVENTION DRUG TYPE FOR RENAL~~

AIDS DEFINING ILLNESS TYPE (RETIRED) renamed from AIDS DEFINING ILLNESS TYPE

Change to Attribute: Changed Description, status to Retired, Name

The type of Acquired Immune Deficiency Syndrome (AIDS) defining illness a ~~PATIENT~~ is diagnosed with. **This item has been retired from the NHS Data Model and Dictionary.**

~~National Codes:~~ **The last live version of this item is available in the ?????? release of the NHS Data Model and Dictionary.**

- ~~01 Bacterial infections, multiple or recurrent in a child under 13 years of age~~
- ~~02 Candidiasis of bronchi, trachea or lungs~~
- ~~03 Candidiasis, oesophageal~~
- ~~04 Cervical cancer, invasive~~
- ~~05 Coccidioidomycosis, disseminated or extrapulmonary~~
- ~~06 Cryptococcosis, extrapulmonary~~

- 07 Cryptosporidiosis, intestinal with diarrhoea (>1 month's duration)
- 08 Cytomegalovirus retinitis (with loss of vision)
- 09 Cytomegalovirus disease (other than liver, spleen, or nodes) in a [PATIENT](#) over one month of age
- 10 Encephalopathy, Human Immunodeficiency Virus (HIV) related
- 11 Herpes simplex virus (HSV): chronic ulcer(s) (>1 month's duration); or bronchitis, pneumonitis, or oesophagitis in a [PATIENT](#) over one month of age
- 12 Histoplasmosis, disseminated or extrapulmonary
- 13 Isosporiasis, intestinal with diarrhoea (>1 month's duration)
- 14 Kaposi's sarcoma (KS)
- 15 Lymphoid interstitial pneumonia (LIP) in a child under 13 years of age
- 16 Lymphoma, Burkitt's (or equivalent term)
- 17 Lymphoma, immunoblastic (or equivalent term)
- 18 Lymphoma, primary, of the brain
- 19 Mycobacterium avium complex (MAI) or M. kansasii, disseminated or extrapulmonary
- 20 Mycobacterium Tuberculosis (MTB), pulmonary in an adult or an adolescent (aged 13 years or over)
- 21 Mycobacterium Tuberculosis (MTB), extrapulmonary
- 22 Mycobacterium, other species or unidentified species, disseminated or extrapulmonary
- 23 Pneumonia carinii pneumonia (PCP)
- 24 Pneumonia, recurrent
- 25 Progressive multifocal leucoencephalopathy (PML)
- 26 Salmonella (non typhoid) septicaemia, recurrent
- 27 Toxoplasma of the brain in a [PATIENT](#) over one month of age
- 28 Wasting syndrome due to HIV

Access to this version can be obtained by emailing information.standards@nhs.net with "NHS Data Model and Dictionary - Archive Request" in the email subject line.

AIDS DEFINING ILLNESS TYPE (RETIRED)_ renamed from AIDS DEFINING ILLNESS TYPE

Change to Attribute: Changed Description, status to Retired, Name

- Changed Description
- Retired AIDS DEFINING ILLNESS TYPE
- Changed Name from Data_Dictionary.Attributes.A.Age.AIDS_DEFINING_ILLNESS_TYPE to Retired.Data_Dictionary.Attributes.A.AIDS_DEFINING_ILLNESS_TYPE

ANTIRETROVIRAL THERAPY DRUG PRESCRIBED CODE (RETIRED)_ renamed from ANTIRETROVIRAL THERAPY DRUG PRESCRIBED CODE

Change to Attribute: Changed Description, status to Retired, Name

The [Antiretroviral Therapy Drug Regimen](#) prescribed to a [PATIENT](#) at the [HIV Clinic Attendance](#). **This item has been retired from the NHS Data Model and Dictionary.**

The codes are provided by [Public Health England \(PHE\)](#) and can be found on the [Public Health England website](#). **The last live version of this item is available in the ?????? release of the NHS Data Model and Dictionary.**

Access to this version can be obtained by emailing information.standards@nhs.net with "NHS Data Model and Dictionary - Archive Request" in the email subject line.

ANTIRETROVIRAL THERAPY DRUG PRESCRIBED CODE (RETIRED)_ renamed from ANTIRETROVIRAL THERAPY DRUG PRESCRIBED CODE

Change to Attribute: Changed Description, status to Retired, Name

- Changed Description
- Retired ANTIRETROVIRAL THERAPY DRUG PRESCRIBED CODE
- Changed Name from Data_Dictionary.Attributes.A.Ana.ANTIRETROVIRAL_THERAPY_DRUG_PRESCRIBED_CODE to Retired.Data_Dictionary.Attributes.A.ANTIRETROVIRAL_THERAPY_DRUG_PRESCRIBED_CODE

ANTIRETROVIRAL THERAPY DRUG REGIMEN GROUP CODE_ renamed from ANTIRETROVIRAL THERAPY GROUP CODE

Change to Attribute: Changed Description, Name

The [Antiretroviral Therapy Drug Regimen](#) a [PATIENT](#) is assigned to, as recorded at a [HIV Clinic Attendance](#).

National Codes:

- ~~A~~ First [Antiretroviral Therapy](#) regimen
- ~~B~~ Second and subsequent [Antiretroviral Therapy](#) regimens
- ~~C~~ Complex [Antiretroviral Therapy](#)
- A First [Antiretroviral Therapy Drug Regimen](#)
- B Second and subsequent [Antiretroviral Therapy Drug Regimens](#)
- C Complex [Antiretroviral Therapy \(Retired 01 November 2016\)](#)

ANTIRETROVIRAL THERAPY DRUG REGIMEN GROUP CODE_ renamed from ANTIRETROVIRAL THERAPY GROUP CODE

Change to Attribute: Changed Description, Name

- Changed Description
- Changed Name from Data_Dictionary.Attributes.A.Ana.ANTIRETROVIRAL_THERAPY_GROUP_CODE to Data_Dictionary.Attributes.A.Ana.ANTIRETROVIRAL_THERAPY_DRUG_REGIMEN_GROUP_CODE

ANTIRETROVIRAL THERAPY HOME DELIVERY INDICATOR

Change to Attribute: Changed Description

An indication of whether the [PATIENT](#) is receiving prescribed [Antiretroviral Therapy](#) at the [PATIENT USUAL ADDRESS](#).

National Codes:

- Y Yes
- N No
- Y Yes - the [PATIENT](#) is receiving prescribed [Antiretroviral Therapy](#) at the [PATIENT USUAL ADDRESS](#)
- N No - the [PATIENT](#) is not receiving prescribed [Antiretroviral Therapy](#) at the [PATIENT USUAL ADDRESS](#)

CARE PROFESSIONAL TYPE FOR HIV

Change to Attribute: New Attribute

The type of [CARE PROFESSIONAL](#) who saw the [PATIENT](#) on the [ATTENDANCE DATE](#) at a [HIV Clinic Attendance](#).

National Codes:

- 10 Medical Doctor - [CONSULTANT](#)
- 11 Medical Doctor - other grade
- 20 Clinical Nurse Specialist
- 30 [Pharmacist](#)
- 40 [Psychologist](#)

- 50 [Social Worker](#)
- 60 [Health Advisor](#)
- 70 [Dietitian](#)
- 99 [Other Staff Member \(e.g. Physiotherapist, Occupational Therapist, NURSE etc.\)](#)

This attribute is also known by these names:

Context	Alias
plural	CARE PROFESSIONAL TYPES FOR HIV

CARE PROFESSIONAL TYPE FOR HIV

Change to Attribute: New Attribute

CARE PROFESSIONAL TYPE FOR HIV

Data Elements:

CARE PROFESSIONAL TYPE (HIV)
--

CLINIC ATTENDANCE PURPOSE CODE FOR HIV

Change to Attribute: Changed Description

The purpose of a [HIV Clinic Attendance](#) for a [PATIENT](#).

National Codes:

- 1 Medical consultation
- 2 Diagnostic test
- 3 ~~Other purpose~~
- 3 [Other](#)

CONSULTATION MEDIUM USED

Change to Attribute: Changed Description

[CONSULTATION MEDIUM USED](#) identifies the communication mechanism used to relay information between the [CARE PROFESSIONAL](#) and the [PERSON](#) who is the subject of the consultation, during a [CARE ACTIVITY](#).

The telephone or telemedicine consultation should directly support diagnosis and care planning and must replace a face to face [Out-Patient Attendance Consultant](#), [Clinic Attendance Nurse](#) or [Clinic Attendance Midwife](#), types of [CARE ACTIVITY](#). A record of the telephone or telemedicine consultation must be retained in the [PATIENT](#)'s records.

Telephone contacts solely for informing [PATIENTS](#) of results are excluded.

National Codes:

- 01 Face to face communication
- 02 Telephone
- 03 Telemedicine web camera
- 04 Talk type for a [PERSON](#) unable to speak
- 05 Email **
- 06 Short Message Service (SMS) - Text Messaging **
- 98 Other *

Notes:

- * National Code 98 'Other' is **only** used for the [Children and Young People's Health Services Data Set](#), [Community Information Data Set](#), [Mental Health Services Data Set](#) and [Sexual and Reproductive Health Activity Data Set](#). It is **NOT** valid in any other data set including Commissioning Data Set version 6-2.
- ** National Codes 05 'Email' and 06 'Short Message Service (SMS) - Text Messaging' are **NOT** valid for Commissioning Data Set version 6-2.
- ** National Code 06 'Short Message Service (SMS) - Text Messaging' is **NOT** valid for the [HIV and AIDS Reporting Data Set](#).

FIRST ANTIRETROVIRAL THERAPY IN UNITED KINGDOM INDICATOR

Change to Attribute: Changed Description

An indication of whether the [PATIENT](#) started [Antiretroviral Therapy](#) for the first time in the United Kingdom at the [HIV Clinic Attendance](#).

National Codes:

- | | |
|---|---|
| Y | Yes |
| N | No |
| Y | Yes - the PATIENT started Antiretroviral Therapy for the first time in the United Kingdom at the HIV Clinic Attendance |
| N | No - the PATIENT did not start Antiretroviral Therapy for the first time in the United Kingdom at the HIV Clinic Attendance |

FIRST ANTIRETROVIRAL THERAPY IN UNITED KINGDOM INDICATOR

Change to Attribute: Changed Description

- Changed Description

GENDER IDENTITY CODE FOR HIV (RETIRED) renamed from GENDER IDENTITY CODE FOR HIV

Change to Attribute: Changed Description, status to Retired, Name

The gender identity of a [PATIENT](#) as stated by the [PATIENT](#) at a [HIV Clinic Attendance](#). **This item has been retired from the NHS Data Model and Dictionary.**

~~*National Codes:*~~ **The last live version of this item is available in the ?????? release of the NHS Data Model and Dictionary.**

- | | |
|---|-------------|
| 1 | Male |
| 2 | Female |
| 3 | Transgender |

Access to this version can be obtained by emailing information.standards@nhs.net with "NHS Data Model and Dictionary - Archive Request" in the email subject line.

GENDER IDENTITY CODE FOR HIV (RETIRED) renamed from GENDER IDENTITY CODE FOR HIV

Change to Attribute: Changed Description, status to Retired, Name

- Changed Description
- Retired GENDER IDENTITY CODE FOR HIV
- Changed Name from Data_Dictionary.Attributes.G.GENDER_IDENTITY_CODE_FOR_HIV to Retired.Data_Dictionary.Attributes.G.GENDER_IDENTITY_CODE_FOR_HIV

GENDER IDENTITY CODE FOR SEXUAL HEALTH

Change to Attribute: New Attribute

The gender identity of a **PATIENT** as stated by the **PATIENT** at a **HIV Clinic Attendance** or **Genitourinary Consultant Clinic Attendance**.

National Codes:

- 1 Male (including trans man)
- 2 Female (including trans woman)
- 3 Non-binary
- 4 Other
- Z Not Stated (**PERSON** asked but declined to provide a response)

This attribute is also known by these names:

Context	Alias
plural	GENDER IDENTITY CODES FOR SEXUAL HEALTH

GENDER IDENTITY CODE FOR SEXUAL HEALTH

Change to Attribute: New Attribute

GENDER IDENTITY CODE FOR SEXUAL HEALTH

Data Elements:

GENDER IDENTITY CODE (SEXUAL HEALTH)

GENDER IDENTITY SAME AT BIRTH INDICATOR

Change to Attribute: New Attribute

An indication of whether the **PERSON**'s gender identity is the same as their gender assigned at birth.

National Codes:

- Y Yes - the **PERSON**'s gender identity is the same as their gender assigned at birth
- N No - the **PERSON**'s gender identity is not the same as their gender assigned at birth
- Z Not Stated (**PERSON** asked but declined to provide a response)

This attribute is also known by these names:

Context	Alias
plural	GENDER IDENTITY SAME AT BIRTH INDICATORS

GENDER IDENTITY SAME AT BIRTH INDICATOR

Change to Attribute: New Attribute

GENDER IDENTITY SAME AT BIRTH INDICATOR

Data Elements:

GENDER IDENTITY SAME AT BIRTH INDICATOR

HUMAN PAPILLOMAVIRUS VACCINATION DOSE GIVEN

Change to Attribute: New Attribute

The Human papillomavirus (HPV) vaccination dose given to the **PATIENT**.

National Codes:

- 1 1st dose given
- 2 2nd dose given
- 3 3rd dose given

This attribute is also known by these names:

Context	Alias
plural	HUMAN PAPILLOMAVIRUS VACCINATION DOSES GIVEN

HUMAN PAPILLOMAVIRUS VACCINATION DOSE GIVEN

Change to Attribute: New Attribute

HUMAN PAPILLOMAVIRUS VACCINATION DOSE GIVEN

Data Elements:

HUMAN PAPILLOMAVIRUS VACCINATION DOSE GIVEN

INITIAL DIAGNOSIS CARE SETTING OR SERVICE FOR HIV_ renamed from INITIAL DIAGNOSIS CARE SETTING FOR HIV

Change to Attribute: Changed Description, Name

The type of care setting in the United Kingdom where the initial Human Immunodeficiency Virus (HIV) diagnosis for newly diagnosed **PATIENTS** was made. The type of care setting or **SERVICE** in the United Kingdom where the initial Human Immunodeficiency Virus (HIV) positive diagnostic test was performed.

National Codes:

- 01 Genitourinary Medicine (GUM) and/or Human Immunodeficiency Virus (HIV) clinic
- 02 Antenatal clinic
- 03 [General Medical Practitioner Practice](#)
- 04 Medical admissions for in-patient care
- 05 Infectious disease unit (outpatient only)
- 06 [Accident and Emergency Department](#) (including minor injuries department)
- 07 ~~Other Outpatient~~
- 08 ~~Drug misuse service~~
- 09 ~~Prison~~
- 07 Other NHS Outpatient
- 08 Drug Misuse Service
- 09 Prison
- 10 Blood Transfusion Service
- 11 ~~Other setting in the United Kingdom (not specified)~~
- 11 Other setting or **SERVICE** in the United Kingdom (not specified)
- 12 Community Setting

- 13 Home Testing
- 14 Self Sampling Service
- 15 Private Medical Clinic
- 16 Pharmacy

NEW HIV DIAGNOSIS IN UNITED KINGDOM INDICATOR

Change to Attribute: Changed Description

An indication of whether the [PATIENT](#) was newly diagnosed with Human Immunodeficiency Virus (HIV) in the United Kingdom at the current [HIV Clinic Attendance](#).

National Codes:

- Y Yes
- N No
- Y Yes - the [PATIENT](#) was newly diagnosed with Human Immunodeficiency Virus (HIV) in the United Kingdom at the current [HIV Clinic Attendance](#)
- N No - the [PATIENT](#) was not newly diagnosed with Human Immunodeficiency Virus (HIV) in the United Kingdom at the current [HIV Clinic Attendance](#)

NUMBER OF HIV CONTACTS (RETIRED)_ renamed from NUMBER OF HIV CONTACTS

Change to Attribute: Changed Description, status to Retired, Name

The number of the [PATIENT](#)'s Human Immunodeficiency Virus (HIV) contacts in the past calendar year, as stated by the [PATIENT](#) at the [Attendance Date](#). **This item has been retired from the NHS Data Model and Dictionary.**

This includes contacts where HIV may be transmitted via sexual or injecting transmission. **The last live version of this item is available in the ?????? release of the NHS Data Model and Dictionary.**

Access to this version can be obtained by emailing information.standards@nhs.net with "NHS Data Model and Dictionary - Archive Request" in the email subject line.

NUMBER OF HIV CONTACTS (RETIRED)_ renamed from NUMBER OF HIV CONTACTS

Change to Attribute: Changed Description, status to Retired, Name

- Changed Description
- Retired NUMBER OF HIV CONTACTS
- Changed Name from Data_Dictionary.Attributes.N.No.NUMBER_OF_HIV_CONTACTS to Retired.Data_Dictionary.Attributes.N.NUMBER_OF_HIV_CONTACTS

PATIENT DIAGNOSIS TYPE FOR HIV (RETIRED)_ renamed from PATIENT DIAGNOSIS TYPE FOR HIV

Change to Attribute: Changed Description, status to Retired, Name

The type of [PATIENT](#) diagnosis recorded at the [HIV Clinic Attendance](#). **This item has been retired from the NHS Data Model and Dictionary.**

National Codes: **The last live version of this item is available in the ?????? release of the NHS Data Model and Dictionary.**

- 01 Severe unstable Human Immunodeficiency Virus (HIV) associated end organ disease
- 02 Seroconversion illness

Access to this version can be obtained by emailing information.standards@nhs.net with "NHS Data Model and Dictionary - Archive Request" in the email subject line.

PATIENT DIAGNOSIS TYPE FOR HIV (RETIRED) renamed from **PATIENT DIAGNOSIS TYPE FOR HIV**

Change to Attribute: Changed Description, status to Retired, Name

- Changed Description
- Retired PATIENT DIAGNOSIS TYPE FOR HIV
- Changed Name from Data_Dictionary.Attributes.P.Pati.PATIENT_DIAGNOSIS_TYPE_FOR_HIV to Retired.Data_Dictionary.Attributes.P.PATIENT_DIAGNOSIS_TYPE_FOR_HIV

PATIENT EXPOSURE TO HIV

Change to Attribute: Changed Description

The PATIENT's most likely exposure to Human Immunodeficiency Virus (HIV), as recorded at the HIV Clinic Attendance. The PATIENT's most likely infection route for exposure to Human Immunodeficiency Virus (HIV), based on clinical judgement, as recorded at the HIV Clinic Attendance.

National Codes:

- 01 Sex between men
- 02 Injecting drug use
- 03 Sex between men and women
- 04 Mother to child transmission
- 05 Contact with blood products (non occupational)
- 06 Exposure via health care work
- 07 Men who have sex with men who also have injected drugs
- 99 ~~Undetermined - includes exposure to more than one risk factor or where no risk factor is determined~~
- 99 Undetermined - where no risk factor is determined

PERSON GENDER TYPE (RETIRED) renamed from **PERSON GENDER TYPE**

Change to Attribute: Changed Description, status to Retired, Name

Identifies the type of PERSON GENDER recorded. **This item has been retired from the NHS Data Model and Dictionary.**

Note:

PERSON GENDER CODE "0 Not Known" is only applicable to "Person Gender Current". **The last live version of this item is available in the ?????? release of the NHS Data Model and Dictionary.**

National Codes: **Access to this version can be obtained by emailing information.standards@nhs.net with "NHS Data Model and Dictionary - Archive Request" in the email subject line.**

- 01 PERSON GENDER CODE AT REGISTRATION
- 02 PERSON GENDER CURRENT / PERSON GENDER CODE CURRENT

PERSON GENDER TYPE (RETIRED) renamed from **PERSON GENDER TYPE**

Change to Attribute: Changed Description, status to Retired, Name

- Changed Description
- Retired PERSON GENDER TYPE
- Changed Name from Data_Dictionary.Attributes.P.Person.PERSON_GENDER_TYPE to Retired.Data_Dictionary.Attributes.P.PERSON_GENDER_TYPE

POST AND/OR PRE EXPOSURE PROPHYLAXIS CODE (RETIRED)_ renamed from **POST AND/OR PRE EXPOSURE PROPHYLAXIS CODE**

Change to Attribute: Changed Description, status to Retired, Name

A code to indicate whether a [PATIENT](#) newly diagnosed with Human Immunodeficiency Virus (HIV) received post exposure prophylaxis, and/or pre exposure prophylaxis in the six months prior to the diagnosis. **This item has been retired from the NHS Data Model and Dictionary.**

National Codes: **The last live version of this item is available in the ?????? release of the NHS Data Model and Dictionary.**

- 1 No: Not receiving
- 2 Yes: Receiving Post-Exposure Prophylaxis (PEP)
- 3 Yes: Receiving Pre-Exposure Prophylaxis (PREP)
- 4 Yes: Receiving Post-Exposure Prophylaxis (PEP) and Pre-Exposure Prophylaxis (PREP)

Access to this version can be obtained by emailing information.standards@nhs.net with "NHS Data Model and Dictionary - Archive Request" in the email subject line.

POST AND/OR PRE EXPOSURE PROPHYLAXIS CODE (RETIRED)_ renamed from **POST AND/OR PRE EXPOSURE PROPHYLAXIS CODE**

Change to Attribute: Changed Description, status to Retired, Name

- Changed Description
- Retired POST AND/OR PRE EXPOSURE PROPHYLAXIS CODE
- Changed Name from Data_Dictionary.Attributes.P.Pos.POST_AND_OR_PRE_EXPOSURE_PROPHYLAXIS_CODE to Retired.Data_Dictionary.Attributes.P.POST_AND_OR_PRE_EXPOSURE_PROPHYLAXIS_CODE

POST-EXPOSURE PROPHYLAXIS INDICATOR

Change to Attribute: New Attribute

An indication of whether the [PATIENT](#), newly diagnosed with Human Immunodeficiency Virus (HIV), received Post-Exposure Prophylaxis (PEP) in the six months prior to the HIV [PATIENT DIAGNOSIS](#) in the United Kingdom.

National Codes:

- Y Yes - the [PATIENT](#) received Post-Exposure Prophylaxis (PEP) in the six months prior to the HIV [PATIENT DIAGNOSIS](#) in the United Kingdom
- N No - the [PATIENT](#) did not receive Post-Exposure Prophylaxis (PEP) in the six months prior to the HIV [PATIENT DIAGNOSIS](#) in the United Kingdom

This attribute is also known by these names:

Context	Alias
plural	POST-EXPOSURE PROPHYLAXIS INDICATORS

POST-EXPOSURE PROPHYLAXIS INDICATOR

Change to Attribute: New Attribute

POST-EXPOSURE PROPHYLAXIS INDICATOR

Data Elements:

POST-EXPOSURE PROPHYLAXIS INDICATOR

PRE-EXPOSURE PROPHYLAXIS INDICATOR

Change to Attribute: New Attribute

An indication of whether the **PATIENT**, newly diagnosed with Human Immunodeficiency Virus (HIV), received Pre-Exposure Prophylaxis (PrEP) in the six months prior to the HIV **PATIENT DIAGNOSIS** in the United Kingdom.

National Codes:

- Y Yes - the **PATIENT** received Pre-Exposure Prophylaxis (PrEP) in the six months prior to the HIV **PATIENT DIAGNOSIS** in the United Kingdom
- N No - the **PATIENT** did not receive Pre-Exposure Prophylaxis (PrEP) in the six months prior to the HIV **PATIENT DIAGNOSIS** in the United Kingdom

This attribute is also known by these names:

Context	Alias
plural	PRE-EXPOSURE PROPHYLAXIS INDICATORS

PRE-EXPOSURE PROPHYLAXIS INDICATOR

Change to Attribute: New Attribute

PRE-EXPOSURE PROPHYLAXIS INDICATOR

Data Elements:

PRE-EXPOSURE PROPHYLAXIS INDICATOR

PREGNANCY INDICATOR FOR HIV

Change to Attribute: Changed Description

An indication of whether the **PATIENT** is currently treated as pregnant (from first positive pregnancy test to one month post delivery) as recorded at the [HIV Clinic Attendance](#).

Note: this item does not meet the requirements of the [Equality Act](#).

National Codes:

- Y Yes
- N No
- Y Yes - the **PATIENT** is currently treated as pregnant
- N No - the **PATIENT** is not currently treated as pregnant

PREVIOUS NEGATIVE HIV TEST INDICATOR_ renamed from PREVIOUS NEGATIVE HIV TEST IN UNITED KINGDOM INDICATOR

Change to Attribute: Changed Description, Name

An indication of whether the [PATIENT](#) has previously had a negative Human Immunodeficiency Virus (HIV) test in the United Kingdom, as recorded at the [HIV Clinic Attendance](#). An indication of whether the [PATIENT](#) has previously had a negative Human Immunodeficiency Virus (HIV) test, as recorded at the [HIV Clinic Attendance](#).

This is either inside or outside the United Kingdom and is taken from clinical records or is [PATIENT](#) stated.

National Codes:

Y	Yes
N	No
Y	Yes - the PATIENT has previously had a negative Human Immunodeficiency Virus (HIV) test
N	No - the PATIENT has not previously had a negative Human Immunodeficiency Virus (HIV) test

PREVIOUS NEGATIVE HIV TEST INDICATOR_ renamed from PREVIOUS NEGATIVE HIV TEST IN UNITED KINGDOM INDICATOR

Change to Attribute: Changed Description, Name

- Changed Description
- Changed Name from Data_Dictionary.Attributes.P.Prev.PREVIOUS_NEGATIVE_HIV_TEST_IN_UNITED_KINGDOM_INDICATOR to Data_Dictionary.Attributes.P.Prev.PREVIOUS_NEGATIVE_HIV_TEST_INDICATOR

PRISONER INDICATOR

Change to Attribute: Changed Description

An indication of whether a [PERSON](#) is currently a prisoner.

For the [HIV and AIDS Reporting Data Set](#), [PRISONER INDICATOR](#) is an indication of whether a [PERSON](#) is detained in a [Prison](#) or an [Immigration Removal Centre](#).

For the [Genitourinary Medicine Clinic Activity Data Set](#), [PRISONER INDICATOR](#) is used where the [SEXUAL HEALTH AND HIV ACTIVITY PROPERTY TYPE](#) is code 'Z - Prisoner'.

National Codes:

Y	Yes
N	No
Y	Yes - the PERSON is currently a prisoner
N	No - the PERSON is not currently a prisoner

PSYCHIATRIC CARE INDICATOR FOR HIV

Change to Attribute: Changed Description

An indication of whether the [PATIENT](#) is currently under the active care of a [CONSULTANT](#) psychiatrist, as recorded at the [HIV Clinic Attendance](#).

National Codes:

- Y Yes
- N No
- Y Yes - the **PATIENT** is currently under the active care of a **CONSULTANT** psychiatrist
- N No - the **PATIENT** is not currently under the active care of a **CONSULTANT** psychiatrist

SEX WORKER INDICATOR

Change to Attribute: Changed Description

An indication of whether a **PERSON** is currently a sex worker. An indication of whether a **PERSON** is currently or has been a sex worker.

SEX WORKER INDICATOR is used where the **SEXUAL HEALTH AND HIV ACTIVITY PROPERTY TYPE** is code 'SW - Sex Worker'.

National Codes:

- Y Yes
- N No
- Y Yes - the **PERSON** is currently or has been a sex worker
- N No - the **PERSON** is not currently or has not been a sex worker

YEAR AND MONTH FIRST STARTED ANTIRETROVIRAL THERAPY (RETIRED)_ renamed from YEAR AND MONTH FIRST STARTED ANTIRETROVIRAL THERAPY

Change to Attribute: Changed Description, status to Retired, Name

The year and month a **PATIENT** first started **Antiretroviral Therapy**, either abroad or in the United Kingdom, as stated by the **PATIENT** or obtained from clinical records. **This item has been retired from the NHS Data Model and Dictionary.**

The last live version of this item is available in the ?????? release of the NHS Data Model and Dictionary.

Access to this version can be obtained by emailing information.standards@nhs.net with "NHS Data Model and Dictionary - Archive Request" in the email subject line.

YEAR AND MONTH FIRST STARTED ANTIRETROVIRAL THERAPY (RETIRED)_ renamed from YEAR AND MONTH FIRST STARTED ANTIRETROVIRAL THERAPY

Change to Attribute: Changed Description, status to Retired, Name

- Changed Description
- Retired YEAR AND MONTH FIRST STARTED ANTIRETROVIRAL THERAPY
- Changed Name from Data_Dictionary.Attributes.Y.YEAR_AND_MONTH_FIRST_STARTED_ANTIRETROVIRAL_THERAPY to Retired.Data_Dictionary.Attributes.Y.YEAR_AND_MONTH_FIRST_STARTED_ANTIRETROVIRAL_THERAPY

YEAR AND MONTH OF LAST NEGATIVE HIV TEST (RETIRED)_ renamed from YEAR AND MONTH OF LAST NEGATIVE HIV TEST IN UNITED KINGDOM

Change to Attribute: Changed Description, status to Retired, Name

The year and month of the latest test date where the PATIENT was tested negative for Human Immunodeficiency Virus (HIV) in the United Kingdom. **This item has been retired from the NHS Data Model and Dictionary.**

The last live version of this item is available in the ?????? release of the NHS Data Model and Dictionary.

Access to this version can be obtained by emailing information.standards@nhs.net with "NHS Data Model and Dictionary - Archive Request" in the email subject line.

YEAR AND MONTH OF LAST NEGATIVE HIV TEST (RETIRED)_ renamed from YEAR AND MONTH OF LAST NEGATIVE HIV TEST IN UNITED KINGDOM

Change to Attribute: Changed Description, status to Retired, Name

- Changed Description
- Retired YEAR AND MONTH OF LAST NEGATIVE HIV TEST IN UNITED KINGDOM
- Changed Name from Data_Dictionary.Attributes.Y.YEAR_AND_MONTH_OF_LAST_NEGATIVE_HIV_TEST_IN_UNITED_KINGDOM to Retired.Data_Dictionary.Attributes.Y.YEAR_AND_MONTH_OF_LAST_NEGATIVE_HIV_TEST

YEAR OF DIAGNOSIS OUTSIDE UNITED KINGDOM FOR HIV (RETIRED)_ renamed from YEAR OF DIAGNOSIS OUTSIDE UNITED KINGDOM FOR HIV

Change to Attribute: Changed Description, status to Retired, Name

The year the PATIENT was first diagnosed with Human Immunodeficiency Virus (HIV) outside of the United Kingdom. **This item has been retired from the NHS Data Model and Dictionary.**

The last live version of this item is available in the ?????? release of the NHS Data Model and Dictionary.

Access to this version can be obtained by emailing information.standards@nhs.net with "NHS Data Model and Dictionary - Archive Request" in the email subject line.

YEAR OF DIAGNOSIS OUTSIDE UNITED KINGDOM FOR HIV (RETIRED)_ renamed from YEAR OF DIAGNOSIS OUTSIDE UNITED KINGDOM FOR HIV

Change to Attribute: Changed Description, status to Retired, Name

- Changed Description
- Retired YEAR OF DIAGNOSIS OUTSIDE UNITED KINGDOM FOR HIV
- Changed Name from Data_Dictionary.Attributes.Y.YEAR_OF_DIAGNOSIS_OUTSIDE_UNITED_KINGDOM_FOR_HIV to Retired.Data_Dictionary.Attributes.Y.YEAR_OF_DIAGNOSIS_OUTSIDE_UNITED_KINGDOM_FOR_HIV

YEAR OF UK ENTRY (RETIRED)_ renamed from YEAR OF UK ENTRY

Change to Attribute: Changed Description, status to Retired, Name

The year a PERSON entered the United Kingdom. **This item has been retired from the NHS Data Model and Dictionary.**

Note: this is not the date the PERSON became an official resident. The last live version of this item is available in the ?????? release of the NHS Data Model and Dictionary.

Access to this version can be obtained by emailing information.standards@nhs.net with "NHS Data Model and Dictionary - Archive Request" in the email subject line.

YEAR OF UK ENTRY (RETIRED) renamed from **YEAR OF UK ENTRY**

Change to Attribute: Changed Description, status to Retired, Name

- Changed Description
- Retired YEAR OF UK ENTRY
- Changed Name from Data_Dictionary.Attributes.Y.YEAR_OF_UK_ENTRY to Retired.Data_Dictionary.Attributes.Y.YEAR_OF_UK_ENTRY

AIDS DEFINING ILLNESS CODE ADULT (SNOMED CT)

Change to Data Element: New Data Element

Format/Length:	See SNOMED CT CODE
National Codes:	
Default Codes:	

Notes:

[AIDS DEFINING ILLNESS CODE ADULT \(SNOMED CT\)](#) is the same as attribute [CLINICAL TERMINOLOGY CODE](#).

[AIDS DEFINING ILLNESS CODE ADULT \(SNOMED CT\)](#) is the [SNOMED CT](#) concept ID which is used to identify the type of Acquired Immune Deficiency Syndrome (AIDS) defining illness a [PATIENT](#) is diagnosed with.

[AIDS DEFINING ILLNESS CODE ADULT \(SNOMED CT\)](#) is used for adult [PERSONS](#) over 15 years of age.

[SNOMED CT Subset Metadata:](#)

- Subset Name: AIDS defining illness for adults
- Subset Original Id: 69311000000130
- Refset FSN: Acquired immune deficiency syndrome defining illness for adults simple reference set (foundation metadata concept)
- Refset Id : 999002431000000102

For further details relating to the [SNOMED CT Subset Metadata](#), see the Data Dictionary for Care (DD4C) website at: [AIDS defining illness for adults](#).

This data element is also known by these names:

Context	Alias
snomedctsubsetoriginalid	69311000000130
snomedctrefsetname	Acquired immune deficiency syndrome defining illness for adults simple reference set (foundation metadata concept)
snomedctsubsetname	AIDS defining illness for adults
plural	AIDS DEFINING ILLNESS CODES ADULT (SNOMED CT)
snomedctrefsetid	999002431000000102

AIDS DEFINING ILLNESS CODE ADULT (SNOMED CT)

Change to Data Element: New Data Element

AIDS DEFINING ILLNESS CODE ADULT (SNOMED CT)

Attribute:

CLINICAL TERMINOLOGY CODE

AIDS DEFINING ILLNESS TYPE (RETIRED) renamed from AIDS DEFINING ILLNESS TYPE

Change to Data Element: Changed Description, linked Attribute, status to Retired, Name

Format/Length: an2
National Codes: See [AIDS DEFINING ILLNESS TYPE](#)
Default Codes:

Notes:

[AIDS DEFINING ILLNESS TYPE](#) is the same as attribute [AIDS DEFINING ILLNESS TYPE](#).

If the [PATIENT](#) has not been diagnosed with an [AIDS DEFINING ILLNESS TYPE](#), the field should be omitted. **This item has been retired from the NHS Data Model and Dictionary.**

The last live version of this item is available in the ?????? release of the NHS Data Model and Dictionary.

Access to this version can be obtained by emailing information.standards@nhs.net with "NHS Data Model and Dictionary - Archive Request" in the email subject line.

AIDS DEFINING ILLNESS TYPE (RETIRED) renamed from AIDS DEFINING ILLNESS TYPE

Change to Data Element: Changed Description, linked Attribute, status to Retired, Name

AIDS DEFINING ILLNESS TYPE

Attribute:

[AIDS DEFINING ILLNESS TYPE](#)

AIDS DEFINING ILLNESS TYPE (RETIRED) renamed from AIDS DEFINING ILLNESS TYPE

Change to Data Element: Changed Description, linked Attribute, status to Retired, Name

- Changed Description
- null
- Retired AIDS DEFINING ILLNESS TYPE
- Changed Name from Data_Dictionary.Data_Field_Notes.A.Ag.AIDS_DEFINING_ILLNESS_TYPE to Retired.Data_Dictionary.Data_Field_Notes.A.AIDS_DEFINING_ILLNESS_TYPE

ANTIRETROVIRAL THERAPY DRUG (SNOMED CT DM+D)

Change to Data Element: New Data Element

Format/Length: See [DM+D CODE](#)
National Codes:
Default Codes:

Notes:

ANTIRETROVIRAL THERAPY DRUG (SNOMED CT DM+D) is the same as attribute [CLINICAL TERMINOLOGY CODE](#).

[ANTIRETROVIRAL THERAPY DRUG \(SNOMED CT DM+D\)](#) is the [SNOMED CT](#) concept ID from the [NHS Dictionary of Medicines and Devices](#) which is used to identify the [Antiretroviral Therapy](#) drug prescribed to a [PATIENT](#) at the [HIV Clinic Attendance](#).

SNOMED CT Subset Metadata:

- Subset Name: NHS dm+d VTM
- Subset Original Id: 601000001138
- Refset FSN: National Health Service dictionary of medicines and devices virtual therapeutic moiety simple reference set (foundation metadata concept)
- Refset Id : 999000581000001102

For further details relating to the [SNOMED CT Subset Metadata](#), see the [Data Dictionary for Care \(DD4C\)](#) website at: [NHS dm+d VTM](#).

This data element is also known by these names:

Context	Alias
snomedctsubsetoriginalid	601000001138
snomedctrefsetname	National Health Service dictionary of medicines and devices virtual therapeutic moiety simple reference set (foundation metadata concept)
snomedctsubsetname	NHS dm+d VTM
plural	ANTIRETROVIRAL THERAPY DRUGS (SNOMED CT DM+D)
snomedctrefsetid	999000581000001102

ANTIRETROVIRAL THERAPY DRUG (SNOMED CT DM+D)

Change to Data Element: New Data Element

ANTIRETROVIRAL THERAPY DRUG (SNOMED CT DM+D)

Attribute:

[CLINICAL TERMINOLOGY CODE](#)

ANTIRETROVIRAL THERAPY DRUG PRESCRIBED CODE (RETIRED)_renamed from ANTIRETROVIRAL THERAPY DRUG PRESCRIBED CODE

Change to Data Element: Changed Description, linked Attribute, status to Retired, Name

Format/Length:	max-an3
National Codes:	
Default Codes:	

Notes:

[ANTIRETROVIRAL THERAPY DRUG PRESCRIBED CODE](#) is the same as attribute [ANTIRETROVIRAL THERAPY DRUG PRESCRIBED CODE](#).

For the [HIV and AIDS Reporting Data Set](#), if the [PATIENT](#) is not receiving [Antiretroviral Therapy](#), the field should be omitted. **This item has been retired from the NHS Data Model and Dictionary.**

The last live version of this item is available in the ?????? release of the NHS Data Model and Dictionary.

Access to this version can be obtained by emailing information.standards@nhs.net with "NHS Data Model and Dictionary - Archive Request" in the email subject line.

ANTIRETROVIRAL THERAPY DRUG PRESCRIBED CODE (RETIRED)_ renamed from ANTIRETROVIRAL THERAPY DRUG PRESCRIBED CODE

Change to Data Element: Changed Description, linked Attribute, status to Retired, Name

ANTIRETROVIRAL THERAPY DRUG PRESCRIBED CODE

Attribute:

[ANTIRETROVIRAL THERAPY DRUG PRESCRIBED CODE](#)

ANTIRETROVIRAL THERAPY DRUG PRESCRIBED CODE (RETIRED)_ renamed from ANTIRETROVIRAL THERAPY DRUG PRESCRIBED CODE

Change to Data Element: Changed Description, linked Attribute, status to Retired, Name

- Changed Description
 - null
 - Retired ANTIRETROVIRAL THERAPY DRUG PRESCRIBED CODE
 - Changed Name from Data_Dictionary.Data_Field_Notes.A.An.ANTIRETROVIRAL_THERAPY_DRUG_PRESCRIBED_CODE to Retired.Data_Dictionary.Data_Field_Notes.A.ANTIRETROVIRAL_THERAPY_DRUG_PRESCRIBED_CODE
-

ANTIRETROVIRAL THERAPY DRUG REGIMEN GROUP CODE_ renamed from ANTIRETROVIRAL THERAPY GROUP CODE

Change to Data Element: Changed Description, Name

Format/Length:	an1
National Codes:	See ANTIRETROVIRAL THERAPY GROUP CODE
Default Codes:	X - Not on Antiretroviral Therapy
National Codes:	See ANTIRETROVIRAL THERAPY DRUG REGIMEN GROUP CODE
Default Codes:	X - Not on Antiretroviral Therapy (ART)

Notes:

[ANTIRETROVIRAL THERAPY GROUP CODE](#) is the same as attribute [ANTIRETROVIRAL THERAPY GROUP CODE](#). [ANTIRETROVIRAL THERAPY DRUG REGIMEN GROUP CODE](#) is the same as attribute [ANTIRETROVIRAL THERAPY DRUG REGIMEN GROUP CODE](#).

ANTIRETROVIRAL THERAPY DRUG REGIMEN GROUP CODE_ renamed from ANTIRETROVIRAL THERAPY GROUP CODE

Change to Data Element: Changed Description, Name

- Changed Description
 - Changed Name from Data_Dictionary.Data_Field_Notes.A.An.ANTIRETROVIRAL_THERAPY_GROUP_CODE to Data_Dictionary.Data_Field_Notes.A.An.ANTIRETROVIRAL_THERAPY_DRUG_REGIMEN_GROUP_CODE
-

CARE PROFESSIONAL TYPE (HIV)

Change to Data Element: New Data Element

Format/Length:	an2
National Codes:	See CARE PROFESSIONAL TYPE FOR HIV
Default Codes:	

Notes:

CARE PROFESSIONAL TYPE (HIV) is the same as attribute CARE PROFESSIONAL TYPE FOR HIV.

This data element is also known by these names:

Context	Alias
plural	CARE PROFESSIONAL TYPES (HIV)

CARE PROFESSIONAL TYPE (HIV)

Change to Data Element: New Data Element

CARE PROFESSIONAL TYPE (HIV)

Attribute:

CARE PROFESSIONAL TYPE FOR HIV

CD4 CELL COUNT

Change to Data Element: Changed Description

Format/Length:	max n4
National Codes:	
Default Codes:	

Notes:

~~CD4 CELL COUNT is the result of the Clinical Investigation which measures the PATIENT's CD4 cell count (an indicator of the progress of an Human Immunodeficiency Virus (HIV) infection), where the UNIT OF MEASUREMENT is per 'Cubic Millimetre (mm³)', as recorded at the HIV Clinic Attendance.~~

If the PATIENT's CD4 cell count has not been recorded, the field should be omitted.

CD4 CELL COUNT is the result of the Clinical Investigation which measures the PATIENT's CD4 cell count (an indicator of the progress of an Human Immunodeficiency Virus (HIV) infection), where the UCUM UNIT OF MEASUREMENT is 'Cubic Millimetre (mm³)'.

CD4 CELL COUNT PERFORMED INDICATOR

Change to Data Element: Changed Description

Format/Length:	an1
National Codes:	See PATIENT PROCEDURE PERFORMED INDICATOR
Default Codes:	

Notes:

~~CD4 CELL COUNT PERFORMED INDICATOR is the same as attribute PATIENT PROCEDURE PERFORMED INDICATOR, to indicate if the CD4 cell count (an indicator of the progress of an Human Immunodeficiency Virus (HIV) infection) was performed at the HIV Clinic Attendance.~~ CD4 CELL COUNT PERFORMED INDICATOR is the same as attribute PATIENT PROCEDURE PERFORMED INDICATOR, to indicate if the CD4 cell count (an indicator of the progress of an Human Immunodeficiency Virus (HIV) infection) was performed. For the HIV and AIDS Reporting Data Set, CD4 CELL COUNT PERFORMED INDICATOR is performed at the HIV Clinic Attendance.

CHRONIC VIRAL LIVER DISEASE TREATMENT INDICATOR (HIV)_ renamed from CHRONIC VIRAL LIVER DISEASE INDICATOR (HIV)

Change to Data Element: Changed Description, Name

Format/Length:	an1
National Codes:	See PATIENT PROCEDURE PERFORMED INDICATOR
Default Codes:	

Notes:

~~CHRONIC VIRAL LIVER DISEASE INDICATOR (HIV) is the same as attribute PATIENT PROCEDURE PERFORMED INDICATOR, to indicate if the PATIENT is receiving Antiretroviral Therapy for chronic viral liver disease, as recorded at the HIV Clinic Attendance.~~ CHRONIC VIRAL LIVER DISEASE TREATMENT INDICATOR (HIV) is the same as attribute PATIENT PROCEDURE PERFORMED INDICATOR, to indicate if the PATIENT is receiving Antiretroviral Therapy for chronic viral liver disease, as recorded at the HIV Clinic Attendance.

CHRONIC VIRAL LIVER DISEASE TREATMENT INDICATOR (HIV)_ renamed from CHRONIC VIRAL LIVER DISEASE INDICATOR (HIV)

Change to Data Element: Changed Description, Name

- Changed Description
 - Changed Name from Data_Dictionary.Data_Field_Notes.C.Ce.CHRONIC_VIRAL_LIVER_DISEASE_INDICATOR_(HIV) to Data_Dictionary.Data_Field_Notes.C.Ce.CHRONIC_VIRAL_LIVER_DISEASE_TREATMENT_INDICATOR_(HIV)
-

CLINICAL TRIAL INDICATOR

Change to Data Element: Changed Description

Format/Length:	an2
National Codes:	See CLINICAL TRIAL INDICATOR
Default Codes:	99 - Unknown
Default Codes:	99 - Unknown *

Notes:

[CLINICAL TRIAL INDICATOR](#) is the same as attribute [CLINICAL TRIAL INDICATOR](#).

For the [Systemic Anti-Cancer Therapy Data Set](#), this identifies if a [PATIENT](#)'s [Chemotherapy](#) treatment is within a [CLINICAL TRIAL](#).

~~For the [HIV and AIDS Reporting Data Set](#), default code '99 - Unknown' is not valid.~~ Note: * For the [Cancer Outcomes and Services Data Set](#), default code '99 - Unknown' indicates "Not Recorded".

~~For the [Cancer Outcomes and Services Data Set](#), default code '99 - Unknown' indicates "Not Recorded".~~

COUNTRY CODE (HIV INFECTION)

Change to Data Element: Changed Description

Format/Length:	a3
National Codes:	
Default Codes:	

Notes:

[COUNTRY CODE \(HIV INFECTION\)](#) is the same as attribute [COUNTRY CODE](#).

[COUNTRY CODE \(HIV INFECTION\)](#) is the country where a [PATIENT](#) was likely to have been infected with Human Immunodeficiency Virus (HIV).

~~If the [COUNTRY](#) of infection is unknown, the field should be omitted.~~

CURRENT SEX WORKER INDICATOR renamed from **SEX WORKER INDICATOR**

Change to Data Element: Changed Description, Name

Format/Length:	an1
National Codes:	See SEX WORKER INDICATOR
Default Codes:	

Notes:

~~[SEX WORKER INDICATOR](#) is the same as the attribute [SEX WORKER INDICATOR](#).~~ [CURRENT SEX WORKER INDICATOR](#) is the same as the attribute [SEX WORKER INDICATOR](#). [CURRENT SEX WORKER INDICATOR](#) is an indication of whether a [PERSON](#) is currently a sex worker.

CURRENT SEX WORKER INDICATOR renamed from **SEX WORKER INDICATOR**

Change to Data Element: Changed Description, Name

- Changed Description
- Changed Name from Data_Dictionary.Data_Field_Notes.S.Set.SEX_WORKER_INDICATOR to Data_Dictionary.Data_Field_Notes.C.Cou.CURRENT_SEX_WORKER_INDICATOR

DATE FIRST SEEN

Change to Data Element: Changed Description

Format/Length:	See DATE
National Codes:	
Default Codes:	

Notes:

[DATE FIRST SEEN](#) is the same as attribute [ACTIVITY DATE](#) where the [ACTIVITY DATE TYPE](#) is National Code '[Date First Seen](#)'.

For the [National Cancer Waiting Times Monitoring Data Set](#) and [Cancer Outcomes and Services Data Set](#), [DATE FIRST SEEN](#):

- is mandatory for [PATIENTS](#) referred urgently by their [GENERAL PRACTITIONER](#) for suspected cancer but can also be applied to other [PATIENTS](#)
- may not be the same as [DATE FIRST SEEN \(CANCER SPECIALIST\)](#) which records the first time the [PATIENT](#) sees an appropriate specialist in cancer care.

~~**For the [HIV and AIDS Reporting Data Set](#), [DATE FIRST SEEN](#) is the [DATE](#) the [PATIENT](#) was first seen for Human Immunodeficiency Virus (HIV) care in the [HIV Service](#) at a [HIV Clinic Attendance](#).**~~ **For the [HIV and AIDS](#)**

Reporting Data Set, DATE FIRST SEEN is the DATE the PATIENT was first seen for Human Immunodeficiency Virus (HIV) care at a HIV Clinic Attendance at the current Health Care Provider.

DEATH CAUSE ICD CODE (CARE PROFESSIONAL REPORTED)

Change to Data Element: New Data Element

Format/Length:	min an3 max an5
National Codes:	
Default Codes:	

Notes:

DEATH CAUSE ICD CODE (CARE PROFESSIONAL REPORTED) is the same as attribute CLINICAL CLASSIFICATION CODE.

DEATH CAUSE ICD CODE (CARE PROFESSIONAL REPORTED) is the International Classification of Diseases (ICD) code of the cause of death as reported by the CARE PROFESSIONAL, taken from the post mortem or clinical notes.

This data element is also known by these names:

Context	Alias
plural	DEATH CAUSE ICD CODES (CARE PROFESSIONAL REPORTED)

DEATH CAUSE ICD CODE (CARE PROFESSIONAL REPORTED)

Change to Data Element: New Data Element

DEATH CAUSE ICD CODE (CARE PROFESSIONAL REPORTED)

Attribute:

<u>CLINICAL CLASSIFICATION CODE</u>

DEATH CAUSE ICD CODE (CONDITION)

Change to Data Element: Changed Description

Format/Length:	min an4 max an6
National Codes:	
Default Codes:	

Notes:

DEATH CAUSE ICD CODE (CONDITION) is the same as attribute CLINICAL CLASSIFICATION CODE.

DEATH CAUSE ICD CODE (CONDITION) is the International Classification of Diseases (ICD) code of the condition giving rise to death as recorded on the death certificate.

For the HIV and AIDS Reporting Data Set, if the PATIENT has not died, the field should be omitted.

DEATH CAUSE ICD CODE (CONDITION) will be replaced by DEATH CAUSE ICD CODE (IMMEDIATE CONDITION).

DIAGNOSIS DATE IN UNITED KINGDOM (HIV)

Change to Data Element: Changed Description

Format/Length:	See DATE
National Codes:	
Default Codes:	

Notes:

~~[DIAGNOSIS DATE IN UNITED KINGDOM \(HIV\)](#) is the same as the attribute [PERSON PROPERTY OBSERVED DATE](#).~~ [DIAGNOSIS DATE IN UNITED KINGDOM \(HIV\)](#) is the same as the data element [DIAGNOSIS DATE](#).

[DIAGNOSIS DATE IN UNITED KINGDOM \(HIV\)](#) is the [DATE](#) the [PATIENT](#) was first diagnosed as Human Immunodeficiency Virus (HIV) positive in the United Kingdom.

~~If the [PATIENT](#) was not first diagnosed in the United Kingdom, the field should be omitted.~~ [DIAGNOSIS DATE IN UNITED KINGDOM \(HIV\)](#) is recorded where the [NEW HIV DIAGNOSIS IN UNITED KINGDOM INDICATOR](#) National Code is 'Yes - the [PATIENT](#) was newly diagnosed with Human Immunodeficiency Virus (HIV) in the United Kingdom at the current [HIV Clinic Attendance](#)'.

If the [DIAGNOSIS DATE IN UNITED KINGDOM \(HIV\)](#) is not known, the [DATE FIRST SEEN](#) should be recorded.

DIAGNOSIS DATE IN UNITED KINGDOM (HIV)

Change to Data Element: Changed Description

- Changed Description

GENDER IDENTITY CODE (HIV) (RETIRED) renamed from **GENDER IDENTITY CODE (HIV)**

Change to Data Element: Changed Description, linked Attribute, status to Retired, Name

Format/Length:	an1
National Codes:	See GENDER IDENTITY CODE FOR HIV
Default Codes:	

Notes:

~~[GENDER IDENTITY CODE \(HIV\)](#) is the same as attribute [GENDER IDENTITY CODE FOR HIV](#).~~ **This item has been retired from the NHS Data Model and Dictionary.**

The last live version of this item is available in the ?????? release of the NHS Data Model and Dictionary.

Access to this version can be obtained by emailing information.standards@nhs.net with "NHS Data Model and Dictionary - Archive Request" in the email subject line.

GENDER IDENTITY CODE (HIV) (RETIRED) renamed from **GENDER IDENTITY CODE (HIV)**

Change to Data Element: Changed Description, linked Attribute, status to Retired, Name

~~GENDER IDENTITY CODE (HIV)~~**Attribute:**

GENDER IDENTITY CODE FOR HIV
--

GENDER IDENTITY CODE (HIV) (RETIRED)_ renamed from GENDER IDENTITY CODE (HIV)

Change to Data Element: Changed Description, linked Attribute, status to Retired, Name

- Changed Description
- null
- Retired GENDER IDENTITY CODE (HIV)
- Changed Name from Data_Dictionary.Data_Field_Notes.G.GENDER_IDENTITY_CODE_(HIV) to Retired.Data_Dictionary.Data_Field_Notes.G.GENDER_IDENTITY_CODE_(HIV)

GENDER IDENTITY CODE (SEXUAL HEALTH)

Change to Data Element: New Data Element

Format/Length:	an1
National Codes:	See GENDER IDENTITY CODE FOR SEXUAL HEALTH
Default Codes:	X - Not Known (not recorded)

Notes:

[GENDER IDENTITY CODE \(SEXUAL HEALTH\)](#) is the same as attribute [GENDER IDENTITY CODE FOR SEXUAL HEALTH](#).

This data element is also known by these names:

Context	Alias
plural	GENDER IDENTITY CODES (SEXUAL HEALTH)

GENDER IDENTITY CODE (SEXUAL HEALTH)

Change to Data Element: New Data Element

GENDER IDENTITY CODE (SEXUAL HEALTH)**Attribute:**

GENDER IDENTITY CODE FOR SEXUAL HEALTH
--

GENDER IDENTITY SAME AT BIRTH INDICATOR

Change to Data Element: New Data Element

Format/Length:	an1
National Codes:	See GENDER IDENTITY SAME AT BIRTH INDICATOR
Default Codes:	X - Not known (not asked)

Notes:

[GENDER IDENTITY SAME AT BIRTH INDICATOR](#) is the same as attribute [GENDER IDENTITY SAME AT BIRTH INDICATOR](#).

This data element is also known by these names:

Context	Alias
plural	GENDER IDENTITY SAME AT BIRTH INDICATORS

GENDER IDENTITY SAME AT BIRTH INDICATOR

Change to Data Element: New Data Element

GENDER IDENTITY SAME AT BIRTH INDICATOR

Attribute:

GENDER IDENTITY SAME AT BIRTH INDICATOR

HARS MESSAGE VERSION IDENTIFIER

Change to Data Element: Changed Description

Format/Length:	max an10
National Codes:	
Default Codes:	

Notes:

The [HARS MESSAGE VERSION IDENTIFIER](#) identifies the version number of the [HIV and AIDS Reporting Data Set Message](#) which is being used to submit data to [Public Health England \(PHE\)](#). The [HARS MESSAGE VERSION IDENTIFIER](#) identifies the version number of the [HIV and AIDS Reporting Data Set XML Schema](#) which is being used to submit data to [Public Health England \(PHE\)](#).

The [HARS MESSAGE VERSION IDENTIFIER](#) must be populated for each record, in the [HARS Submission Identifier group](#) within the [HIV and AIDS Reporting Data Set Message](#), by the sender of the data set submission prior to transmission of the data to [Public Health England](#). The [HARS MESSAGE VERSION IDENTIFIER](#) must be populated for each record, in the [HARS Submission Identifier group](#) within the [HIV and AIDS Reporting Data Set XML Schema](#), by the sender of the data set submission prior to transmission of the data to [Public Health England](#).

HARS SUBMISSION RECORD COUNT

Change to Data Element: Changed Description

Format/Length:	min n1 max n7
National Codes:	
Default Codes:	

Notes:

The [HARS SUBMISSION RECORD COUNT](#) provides a count of records contained within a [HIV and AIDS Reporting Data Set](#) submission to [Public Health England \(PHE\)](#). This information is used to ensure files are complete upon receipt, and to maintain accurate file processing.

The [HARS SUBMISSION RECORD COUNT](#) must be populated in the [HARS Submission Identifier group](#) within the [HIV and AIDS Reporting Data Set Message](#) by the sender of the data set submission, prior to transmission of the data to [Public Health England](#). The [HARS SUBMISSION RECORD COUNT](#) must be populated in the [HARS Submission Identifier group](#) within the [HIV and AIDS Reporting Data Set XML Schema](#) by the sender of the data set submission, prior to transmission of the data to [Public Health England](#).

HARS UNIQUE IDENTIFIER

Change to Data Element: Changed Description

Format/Length:	max an36
National Codes:	
Default Codes:	

Notes:

The [HARS UNIQUE IDENTIFIER](#) is used in conjunction with the [ORGANISATION CODE \(CODE OF PROVIDER\)](#) to uniquely identify a record within a [HIV and AIDS Reporting Data Set](#) submission to [Public Health England \(PHE\)](#).

The [HARS UNIQUE IDENTIFIER](#) may appear on data quality reports, error reports, and audit logs exchanged between [Public Health England](#) and the submitting [ORGANISATION CODE \(CODE OF PROVIDER\)](#).

~~The [HARS UNIQUE IDENTIFIER](#) must be populated for each record, in the HARS Record Identifier group within the [HIV and AIDS Reporting Data Set](#) Message, by the sender of the data set submission prior to transmission of the data to [Public Health England](#).~~ The [HARS UNIQUE IDENTIFIER](#) must be populated for each record, in the HARS Record Identifier group within the [HIV and AIDS Reporting Data Set XML Schema](#), by the sender of the data set submission prior to transmission of the data to [Public Health England](#).

HEPATITIS B INFECTION INDICATION CODE_ renamed from HEPATITIS B INFECTION INDICATOR

Change to Data Element: Changed Description, Name

Format/Length:	an1
National Codes:	
Default Codes:	

Notes:

~~[HEPATITIS B INFECTION INDICATOR](#) is the result of the [Clinical Investigation](#) to indicate whether the [PATIENT](#) has a hepatitis B infection.~~

[HEPATITIS B INFECTION INDICATION CODE](#) is the result of the [Clinical Investigation](#) to indicate whether the [PATIENT](#) has a hepatitis B infection.

~~For the [HIV and AIDS Reporting Data Set](#), [HEPATITIS B INFECTION INDICATOR](#) indicates if there is [Laboratory](#) evidence of an acute or chronic hepatitis B infection.~~ For the [HIV and AIDS Reporting Data Set](#), [HEPATITIS B INFECTION INDICATION CODE](#) indicates if there is [Laboratory](#) evidence of the [PATIENT](#) having an acute or chronic hepatitis B infection.

Permitted National Codes:

- Y Yes
- N No
- 1 Yes - the [PATIENT](#) has an acute hepatitis B infection
- 2 Yes - the [PATIENT](#) has a chronic hepatitis B infection
- 3 No - the [PATIENT](#) does not have a hepatitis B infection
- 4 Not tested for a hepatitis B infection

HEPATITIS B INFECTION INDICATION CODE_ renamed from HEPATITIS B INFECTION INDICATOR

Change to Data Element: Changed Description, Name

- Changed Description
- Changed Name from Data_Dictionary.Data_Field_Notes.H.He.HEPATITIS_B_INFECTION_INDICATOR to Data_Dictionary.Data_Field_Notes.H.He.HEPATITIS_B_INFECTION_INDICATION_CODE

HEPATITIS C INFECTION INDICATION CODE_ renamed from HEPATITIS C INFECTION INDICATOR

Change to Data Element: Changed Description, Name

Format/Length:	an1
----------------	-----

National Codes:
Default Codes:

Notes:

HEPATITIS C INFECTION INDICATOR is the result of the Clinical Investigation to indicate whether the PATIENT has a hepatitis C infection. HEPATITIS C INFECTION INDICATION CODE is the result of the Clinical Investigation to indicate whether the PATIENT has a hepatitis C infection.

For the HIV and AIDS Reporting Data Set, HEPATITIS C INFECTION INDICATOR indicates if there is Laboratory evidence of an acute or chronic hepatitis C infection. For the HIV and AIDS Reporting Data Set, HEPATITIS C INFECTION INDICATION CODE indicates if there is Laboratory evidence of the PATIENT having an acute or chronic hepatitis C infection.

Permitted National Codes:

- Y Yes
- N No
- 1 Yes - the PATIENT has an acute hepatitis C infection
- 2 Yes - the PATIENT has a chronic hepatitis C infection
- 3 No - the PATIENT does not have a hepatitis C infection
- 4 Not tested for a hepatitis C infection

HEPATITIS C INFECTION INDICATION CODE renamed from **HEPATITIS C INFECTION INDICATOR**

Change to Data Element: Changed Description, Name

- Changed Description
- Changed Name from Data_Dictionary.Data_Field_Notes.H.He.HEPATITIS_C_INFECTION_INDICATOR to Data_Dictionary.Data_Field_Notes.H.He.HEPATITIS_C_INFECTION_INDICATION_CODE

HUMAN PAPILLOMAVIRUS VACCINATION DOSE GIVEN

Change to Data Element: New Data Element

Format/Length: an1
National Codes: See HUMAN PAPILLOMAVIRUS VACCINATION DOSE GIVEN
Default Codes:

Notes:

HUMAN PAPILLOMAVIRUS VACCINATION DOSE GIVEN is the same as attribute HUMAN PAPILLOMAVIRUS VACCINATION DOSE GIVEN.

This data element is also known by these names:

Context	Alias
plural	HUMAN PAPILLOMAVIRUS VACCINATION DOSES GIVEN

HUMAN PAPILLOMAVIRUS VACCINATION DOSE GIVEN

Change to Data Element: New Data Element

HUMAN PAPILLOMAVIRUS VACCINATION DOSE GIVEN

Attribute:

HUMAN PAPILLOMAVIRUS VACCINATION DOSE GIVEN

INITIAL DIAGNOSIS CARE SETTING OR SERVICE (HIV)_ renamed from INITIAL DIAGNOSIS CARE SETTING (HIV)

Change to Data Element: Changed Description, Name

Format/Length:	an2
National Codes:	See INITIAL DIAGNOSIS CARE SETTING FOR HIV
National Codes:	See INITIAL DIAGNOSIS CARE SETTING OR SERVICE FOR HIV
Default Codes:	97 - Diagnosed outside the United Kingdom 99 - Care Setting not known 99 - Care Setting or SERVICE not known

Notes:

~~[INITIAL DIAGNOSIS CARE SETTING \(HIV\)](#) is the same as attribute [INITIAL DIAGNOSIS CARE SETTING FOR HIV](#).~~
[INITIAL DIAGNOSIS CARE SETTING OR SERVICE \(HIV\)](#) is the same as attribute [INITIAL DIAGNOSIS CARE SETTING OR SERVICE FOR HIV](#).

INITIAL DIAGNOSIS CARE SETTING OR SERVICE (HIV)_ renamed from INITIAL DIAGNOSIS CARE SETTING (HIV)

Change to Data Element: Changed Description, Name

- Changed Description
- Changed Name from Data_Dictionary.Data_Field_Notes.I.In.INITIAL_DIAGNOSIS_CARE_SETTING_(HIV) to Data_Dictionary.Data_Field_Notes.I.In.INITIAL_DIAGNOSIS_CARE_SETTING_OR_SERVICE_(HIV)

LATENT TUBERCULOSIS TEST PERFORMED INDICATOR

Change to Data Element: New Data Element

Format/Length:	an1
National Codes:	See PATIENT PROCEDURE PERFORMED INDICATOR
Default Codes:	9 - Not Recorded

Notes:

[LATENT TUBERCULOSIS TEST PERFORMED INDICATOR](#) is the same as attribute [PATIENT PROCEDURE PERFORMED INDICATOR](#), to indicate if the [PATIENT](#) has ever been tested for Latent Tuberculosis (Latent TB).

This data element is also known by these names:

Context	Alias
plural	LATENT TUBERCULOSIS TEST PERFORMED INDICATORS

LATENT TUBERCULOSIS TEST PERFORMED INDICATOR

Change to Data Element: New Data Element

LATENT TUBERCULOSIS TEST PERFORMED INDICATOR

Attribute:

PATIENT PROCEDURE PERFORMED INDICATOR

NUMBER OF HIV CONTACTABLE CONTACTS

Change to Data Element: Changed Description, linked Attribute

Format/Length:	max n3
National Codes:	
Default Codes:	

Notes:

~~NUMBER OF HIV CONTACTABLE CONTACTS~~ is the same as data element ~~NUMBER OF HIV CONTACTS~~. ~~NUMBER OF HIV CONTACTABLE CONTACTS~~ is the ~~NUMBER OF HIV CONTACTS~~ who are contactable.

~~NUMBER OF HIV CONTACTABLE CONTACTS~~ is the number of the ~~PATIENT~~'s Human Immunodeficiency Virus (HIV) contacts in the past year who are contactable. Guidance for recording HIV partner contacts can be downloaded from the ~~British HIV Association~~ website at: ~~HIV partner notification for adults: definitions, outcomes and standards~~.

If the ~~PATIENT~~ does not know or does not answer, the field should be omitted.

NUMBER OF HIV CONTACTABLE CONTACTS

Change to Data Element: Changed Description, linked Attribute

NUMBER OF HIV CONTACTABLE CONTACTS

Attribute:

~~NUMBER OF HIV CONTACTS~~

NUMBER OF HIV CONTACTABLE CONTACTS TESTED FOR HIV

Change to Data Element: Changed Description, linked Attribute

Format/Length: max n3
National Codes:
Default Codes:

Notes:

~~NUMBER OF HIV CONTACTABLE CONTACTS TESTED FOR HIV~~ is the same as data element ~~NUMBER OF HIV CONTACTABLE CONTACTS~~. ~~NUMBER OF HIV CONTACTABLE CONTACTS TESTED FOR HIV~~ is the ~~NUMBER OF HIV CONTACTS~~ successfully tested for HIV.

~~NUMBER OF HIV CONTACTABLE CONTACTS TESTED FOR HIV~~ is the number of the ~~PATIENT~~'s Human Immunodeficiency Virus (HIV) contacts successfully tested for HIV in the past year. Guidance for recording HIV partner contacts can be downloaded from the ~~British HIV Association~~ website at: ~~HIV partner notification for adults: definitions, outcomes and standards~~.

If the ~~PATIENT~~ does not know or does not answer, the field should be omitted.

NUMBER OF HIV CONTACTABLE CONTACTS TESTED FOR HIV

Change to Data Element: Changed Description, linked Attribute

NUMBER OF HIV CONTACTABLE CONTACTS TESTED FOR HIV

Attribute:

~~NUMBER OF HIV CONTACTS~~

NUMBER OF HIV CONTACTS

Change to Data Element: Changed Description, linked Attribute

Format/Length:	max n3
National Codes:	
Default Codes:	

Notes:

~~NUMBER OF HIV CONTACTS~~ is the same as attribute ~~NUMBER OF HIV CONTACTS~~. NUMBER OF HIV CONTACTS is the number of the PATIENT's Human Immunodeficiency Virus (HIV) contacts as stated by the PATIENT at the Attendance Date.

NUMBER OF HIV CONTACTS is assessed at the first HIV Clinic Attendance in each calendar year. NUMBER OF HIV CONTACTS is assessed for PATIENTS who are newly diagnosed with Human Immunodeficiency Virus (HIV).

If the PATIENT does not know or does not answer, the field should be omitted. Guidance for recording HIV partner contacts can be downloaded from the British HIV Association website at: HIV partner notification for adults: definitions, outcomes and standards.

NUMBER OF HIV CONTACTS

Change to Data Element: Changed Description, linked Attribute

NUMBER OF HIV CONTACTS

Attribute:

NUMBER OF HIV CONTACTS
--

OFFER STATUS (HUMAN PAPILLOMAVIRUS VACCINATION)

Change to Data Element: New Data Element

Format/Length:	an2
National Codes:	
Default Codes:	09 - Not Known (Not recorded)

Notes:

OFFER STATUS (HUMAN PAPILLOMAVIRUS VACCINATION) is the status of the offer of the vaccination for Human papillomavirus (HPV).

Permitted National Codes:

- 01 Offered and Undecided
- 02 Offered and Declined
- 03 Offered and Accepted
- 05 Not Offered: HPV vaccination previously received in full
- 06 Not Offered: Other reason

This data element is also known by these names:

Context	Alias
plural	OFFER STATUSES (HUMAN PAPILLOMAVIRUS VACCINATION)

OFFER STATUS (HUMAN PAPILLOMAVIRUS VACCINATION)

Change to Data Element: New Data Element

OFFER STATUS (HUMAN PAPILLOMAVIRUS VACCINATION)

Attribute:

ACTIVITY OFFER STATUS CODE

PATIENT CONSENT OBTAINED INDICATOR (CARE PROFESSIONAL CONTACT)

Change to Data Element: Changed Description

Format/Length: an1
National Codes:
Default Codes: 9 - [PATIENT](#) not asked

Notes:

~~[PATIENT CONSENT OBTAINED INDICATOR \(CARE PROFESSIONAL CONTACT\)](#) indicates whether the [PATIENT](#) has consented for a [CARE PROFESSIONAL](#) to be contacted about their care.~~ [PATIENT CONSENT OBTAINED INDICATOR \(CARE PROFESSIONAL CONTACT\)](#) is an indication of whether the [PATIENT](#) has consented for a [CARE PROFESSIONAL](#) to be contacted about their care.

~~For the [HIV and AIDS Reporting Data Set](#), [PATIENT CONSENT OBTAINED INDICATOR \(CARE PROFESSIONAL CONTACT\)](#) indicates whether the [PATIENT](#) has consented for their [GENERAL MEDICAL PRACTITIONER](#) to be contacted about the care of their Human Immunodeficiency Virus (HIV) infection.~~ For the [HIV and AIDS Reporting Data Set](#), [PATIENT CONSENT OBTAINED INDICATOR \(CARE PROFESSIONAL CONTACT\)](#) is an indication of whether the [PATIENT](#) has consented for their [GENERAL MEDICAL PRACTITIONER](#) to be contacted about the care of their Human Immunodeficiency Virus (HIV) infection.

Permitted National Codes:

Y Yes
N No
Y Yes - the [PATIENT](#) has consented for their [GENERAL MEDICAL PRACTITIONER](#) to be contacted about their care
N No - the [PATIENT](#) has not consented for their [GENERAL MEDICAL PRACTITIONER](#) to be contacted about their care

PATIENT DIAGNOSIS INDICATOR (HIV END ORGAN DISEASE)

Change to Data Element: Changed Description

Format/Length: an1
National Codes: See [PATIENT DIAGNOSIS INDICATOR](#)
Default Codes:

Notes:

~~[PATIENT DIAGNOSIS INDICATOR \(HIV END ORGAN DISEASE\)](#) is the same as attribute [PATIENT DIAGNOSIS INDICATOR](#).~~ [PATIENT DIAGNOSIS INDICATOR \(HIV END ORGAN DISEASE\)](#) is the same as attribute [PATIENT DIAGNOSIS INDICATOR](#) for Severe unstable Human Immunodeficiency Virus (HIV) associated end organ disease.

~~For the [HIV and AIDS Reporting Data Set](#), [PATIENT DIAGNOSIS INDICATOR \(HIV END ORGAN DISEASE\)](#) is an indication of whether the [PATIENT DIAGNOSIS TYPE FOR HIV](#) of National Code 'Severe unstable Human Immunodeficiency Virus (HIV) associated end organ disease' was recorded at the [HIV Clinic Attendance](#).~~ For the [HIV and AIDS Reporting Data Set](#), [PATIENT DIAGNOSIS INDICATOR \(HIV END ORGAN DISEASE\)](#) includes where the [PATIENT DIAGNOSIS](#) of Severe unstable Human Immunodeficiency Virus (HIV) associated end organ disease has been made, not just during the current HIV Episode.

PATIENT DIAGNOSIS INDICATOR (SEROCONVERSION ILLNESS)

Change to Data Element: Changed Description

Format/Length:	an1
National Codes:	See PATIENT DIAGNOSIS INDICATOR
Default Codes:	

Notes:

~~[PATIENT DIAGNOSIS INDICATOR \(SEROCONVERSION ILLNESS\)](#) is the same as attribute [PATIENT DIAGNOSIS INDICATOR](#).~~ [PATIENT DIAGNOSIS INDICATOR \(SEROCONVERSION ILLNESS\)](#) is the same as attribute [PATIENT DIAGNOSIS INDICATOR](#) for Seroconversion illness.

~~For the [HIV and AIDS Reporting Data Set](#), [PATIENT DIAGNOSIS INDICATOR \(SEROCONVERSION ILLNESS\)](#) is an indication of whether the [PATIENT DIAGNOSIS TYPE FOR HIV](#) of National Code 'Seroconversion illness' was recorded at the [HIV Clinic Attendance](#).~~ For the [HIV and AIDS Reporting Data Set](#), [PATIENT DIAGNOSIS INDICATOR \(SEROCONVERSION ILLNESS\)](#) is an indication of whether the [PATIENT](#) had evidence of Seroconversion illness at the [PATIENT DIAGNOSIS](#) of Human Immunodeficiency Virus (HIV).

PATIENT DIAGNOSIS INDICATOR (VIRAEMIA)

Change to Data Element: New Data Element

Format/Length:	an1
National Codes:	See PATIENT DIAGNOSIS INDICATOR
Default Codes:	

Notes:

[PATIENT DIAGNOSIS INDICATOR \(VIRAEMIA\)](#) is the same as attribute [PATIENT DIAGNOSIS INDICATOR](#) for Viraemia.

For the [HIV and AIDS Reporting Data Set](#), [PATIENT DIAGNOSIS INDICATOR \(VIRAEMIA\)](#) is an indication of whether a [PATIENT](#) on Antiretroviral Therapy has persistent Viraemia.

This data element is also known by these names:

Context	Alias
plural	PATIENT DIAGNOSIS INDICATORS (VIRAEMIA)

PATIENT DIAGNOSIS INDICATOR (VIRAEMIA)

Change to Data Element: New Data Element

PATIENT DIAGNOSIS INDICATOR (VIRAEMIA)**Attribute:**

PATIENT DIAGNOSIS INDICATOR

PERSON GENDER CODE AT REGISTRATION (RETIRED)_ renamed from **PERSON GENDER CODE AT REGISTRATION**

Change to Data Element: Changed Description, linked Attribute, status to Retired, Name

Format/Length:	an1
NWDS ID :	PSEX
NWDS Field Name :	Gender
National Codes:	See PERSON_GENDER_CODE
Default Codes:	

Notes:

[PERSON_GENDER_CODE_AT_REGISTRATION](#) is the same as attribute [PERSON_GENDER_CODE](#) where the [PERSON_GENDER_TYPE](#) is National Code 'Person Gender at Registration'.

[PERSON_GENDER_CODE_AT_REGISTRATION](#) is a [PERSON](#)'s gender at the time the birth was registered. **This item has been retired from the NHS Data Model and Dictionary.**

Where the [PERSON](#) has undergone a Gender Reassignment under the Gender Recognition Act, they will change their legal gender. **The last live version of this item is available in the ?????? release of the NHS Data Model and Dictionary.**

Access to this version can be obtained by emailing information.standards@nhs.net with "NHS Data Model and Dictionary - Archive Request" in the email subject line.

PERSON GENDER CODE AT REGISTRATION (RETIRED)_ renamed from PERSON GENDER CODE AT REGISTRATION

Change to Data Element: Changed Description, linked Attribute, status to Retired, Name

PERSON GENDER CODE AT REGISTRATION

Attribute:

[PERSON_GENDER_CODE](#)

PERSON GENDER CODE AT REGISTRATION (RETIRED)_ renamed from PERSON GENDER CODE AT REGISTRATION

Change to Data Element: Changed Description, linked Attribute, status to Retired, Name

- Changed Description
- null
- Retired PERSON GENDER CODE AT REGISTRATION
- Changed Name from
Data_Dictionary.Data_Field_Notes.P.Pers.PERSON_GENDER_CODE_AT_REGISTRATION to
Retired.Data_Dictionary.Data_Field_Notes.P.PERSON_GENDER_CODE_AT_REGISTRATION

PERSON GENDER CODE CURRENT

Change to Data Element: Changed Description

Format/Length:	an1
National Codes:	See PERSON_GENDER_CODE
Default Codes:	

Notes:

[PERSON_GENDER_CODE_CURRENT](#) is the same as attribute [PERSON_GENDER_CODE](#) where the [PERSON_GENDER_TYPE](#) is National Code 'Person Gender Current'. [PERSON_GENDER_CODE_CURRENT](#) is the same as attribute [PERSON_GENDER_CODE](#).

[PERSON_GENDER_CODE_CURRENT](#) is a [PERSON](#)'s gender currently.

[PERSON GENDER CODE CURRENT](#) is used by the [Secondary Uses Service](#) to derive the [Healthcare Resource Group 4](#). Failure to correctly populate this data element is likely to result in an incorrect [Healthcare Resource Group](#), usually associated with lower levels of healthcare resource.

For further information, please refer to the [NHS Digital](#) website at: [Payment by Results Guidance](#).

[PERSON GENDER CODE CURRENT](#) will be replaced with [PERSON STATED GENDER CODE](#) or [PERSON PHENOTYPIC SEX](#), which is the most recent approved national information standard to describe the required definition.

PERSON GENDER CURRENT

Change to Data Element: Changed Description

Format/Length:	1 numeric
National Codes:	See PERSON GENDER CODE
Default Codes:	

Notes:

~~[PERSON GENDER CURRENT](#) is the same as attribute [PERSON GENDER CODE](#) where the [PERSON GENDER TYPE](#) is National Code 'Person Gender Current'.~~ [PERSON GENDER CURRENT](#) is the same as attribute [PERSON GENDER CODE](#).

[PERSON GENDER CURRENT](#) is a [PERSON](#)'s gender currently.

[PERSON GENDER CURRENT](#) will be replaced with [PERSON STATED GENDER CODE](#) or [PERSON PHENOTYPIC SEX](#), which is the most recent approved national information standard to describe the required definition.

~~POST AND/OR PRE EXPOSURE PROPHYLAXIS CODE (RETIRED)~~ renamed from ~~POST AND/OR PRE EXPOSURE PROPHYLAXIS CODE~~

Change to Data Element: Changed Description, linked Attribute, status to Retired, Name

Format/Length:	an1
National Codes:	See POST AND/OR PRE EXPOSURE PROPHYLAXIS CODE
Default Codes:	9—Unknown (The clinician does not know if the PATIENT has had Post Exposure Prophylaxis (PEP) or Pre Exposure Prophylaxis (PREP))

Notes:

~~[POST AND/OR PRE EXPOSURE PROPHYLAXIS CODE](#) is the same as attribute [POST AND/OR PRE EXPOSURE PROPHYLAXIS CODE](#).~~ **This item has been retired from the NHS Data Model and Dictionary.**

The last live version of this item is available in the ?????? release of the NHS Data Model and Dictionary.

Access to this version can be obtained by emailing information.standards@nhs.net with "NHS Data Model and Dictionary - Archive Request" in the email subject line.

~~POST AND/OR PRE EXPOSURE PROPHYLAXIS CODE (RETIRED)~~ renamed from ~~POST AND/OR PRE EXPOSURE PROPHYLAXIS CODE~~

Change to Data Element: Changed Description, linked Attribute, status to Retired, Name

POST AND/OR PRE EXPOSURE PROPHYLAXIS CODE

Attribute:

POST AND/OR PRE EXPOSURE PROPHYLAXIS CODE

POST AND/OR PRE EXPOSURE PROPHYLAXIS CODE (RETIRED)_ renamed from **POST AND/OR PRE EXPOSURE PROPHYLAXIS CODE**

Change to Data Element: Changed Description, linked Attribute, status to Retired, Name

- Changed Description
- null
- Retired POST AND/OR PRE EXPOSURE PROPHYLAXIS CODE
- Changed Name from Data_Dictionary.Data_Field_Notes.P.Po.POST_AND_OR_PRE_EXPOSURE_PROPHYLAXIS_CODE to Retired.Data_Dictionary.Data_Field_Notes.P.POST_AND_OR_PRE_EXPOSURE_PROPHYLAXIS_CODE

POST-EXPOSURE PROPHYLAXIS INDICATOR

Change to Data Element: New Data Element

Format/Length: an1
 National Codes: See [POST-EXPOSURE PROPHYLAXIS INDICATOR](#)
 Default Codes:

Notes:

[POST-EXPOSURE PROPHYLAXIS INDICATOR](#) is the same as attribute [POST-EXPOSURE PROPHYLAXIS INDICATOR](#).

This data element is also known by these names:

Context	Alias
plural	POST-EXPOSURE PROPHYLAXIS INDICATORS

POST-EXPOSURE PROPHYLAXIS INDICATOR

Change to Data Element: New Data Element

POST-EXPOSURE PROPHYLAXIS INDICATOR

Attribute:

POST-EXPOSURE PROPHYLAXIS INDICATOR

PRE-EXPOSURE PROPHYLAXIS INDICATOR

Change to Data Element: New Data Element

Format/Length: an1
 National Codes: See [PRE-EXPOSURE PROPHYLAXIS INDICATOR](#)
 Default Codes:

Notes:

[PRE-EXPOSURE PROPHYLAXIS INDICATOR](#) is the same as attribute [PRE-EXPOSURE PROPHYLAXIS INDICATOR](#).

This data element is also known by these names:

Context	Alias
plural	PRE-EXPOSURE PROPHYLAXIS INDICATORS

PRE-EXPOSURE PROPHYLAXIS INDICATOR

Change to Data Element: New Data Element

PRE-EXPOSURE PROPHYLAXIS INDICATOR

Attribute:

PRE-EXPOSURE PROPHYLAXIS INDICATOR

PREVIOUS NEGATIVE HIV TEST INDICATOR_ renamed from PREVIOUS NEGATIVE HIV TEST IN UNITED KINGDOM INDICATOR

Change to Data Element: Changed Description, Name

Format/Length:	an1
National Codes:	See PREVIOUS NEGATIVE HIV TEST IN UNITED KINGDOM INDICATOR
National Codes:	See PREVIOUS NEGATIVE HIV TEST INDICATOR
Default Codes:	

Notes:

~~[PREVIOUS NEGATIVE HIV TEST IN UNITED KINGDOM INDICATOR](#) is the same as attribute [PREVIOUS NEGATIVE HIV TEST IN UNITED KINGDOM INDICATOR](#).~~ [PREVIOUS NEGATIVE HIV TEST INDICATOR](#) is the same as attribute [PREVIOUS NEGATIVE HIV TEST INDICATOR](#).

PREVIOUS NEGATIVE HIV TEST INDICATOR_ renamed from PREVIOUS NEGATIVE HIV TEST IN UNITED KINGDOM INDICATOR

Change to Data Element: Changed Description, Name

- Changed Description
- Changed Name from Data_Dictionary.Data_Field_Notes.P.Pret.PREVIOUS_NEGATIVE_HIV_TEST_IN_UNITED_KINGDOM_INDICATOR to Data_Dictionary.Data_Field_Notes.P.Pret.PREVIOUS_NEGATIVE_HIV_TEST_INDICATOR

SITE CODE (OF PREVIOUS HIV CARE)

Change to Data Element: Changed Description

Format/Length:	min an5 max an9
National Codes:	
HARS Default Codes:	XXXXX - HIV care received elsewhere in the United Kingdom but Organisation unknown
	YYYYY - HIV care received elsewhere outside the United Kingdom
	ZZZZZ - No HIV care received elsewhere
HARS Default Codes:	X9999 - Organisation Not Known
	Y9999 - Organisation outside the UK
	Z9999 - Not Applicable

Notes:

[SITE CODE \(OF PREVIOUS HIV CARE\)](#) is the same as attribute [ORGANISATION SITE CODE](#).

[SITE CODE \(OF PREVIOUS HIV CARE\)](#) is the [ORGANISATION SITE CODE](#) of the [Organisation](#) at which previous treatment for Human Immunodeficiency Virus (HIV) took place.

For the [HIV and AIDS Reporting Data Set](#), where [PATIENTS](#) have received care at more than one [Organisation Site](#), the most recent should be reported.

SITE CODE (REFERRED TO FOR SHARED HIV CARE) renamed from SITE CODE (REFERRED TO FOR HIV CARE)

Change to Data Element: Changed Description, Name

Format/Length:	min an5 max an9
National Codes:	
Default Codes:	
HARS Default Codes:	X9999 - Organisation Not Known Y9999 - Organisation outside the UK Z9999 - Not Applicable

Notes:

~~[SITE CODE \(REFERRED TO FOR HIV CARE\)](#) is the same as attribute [ORGANISATION SITE CODE](#). [SITE CODE \(REFERRED TO FOR SHARED HIV CARE\)](#) is the same as attribute [ORGANISATION SITE CODE](#).~~

~~[SITE CODE \(REFERRED TO FOR HIV CARE\)](#) is the [ORGANISATION SITE CODE](#) of the specialist [Human Immunodeficiency Virus \(HIV\) Service](#) where the [PATIENT](#) has been referred to for aspects of their HIV care, but remain under the care of their regular [HIV Service](#). [SITE CODE \(REFERRED TO FOR SHARED HIV CARE\)](#) is the [ORGANISATION SITE CODE](#) of the specialist [Human Immunodeficiency Virus \(HIV\) Service](#) where the [PATIENT](#) has been referred to for shared care to deal with aspects of their HIV care, but remain under the care of their regular [HIV Service](#).~~

SITE CODE (REFERRED TO FOR SHARED HIV CARE) renamed from SITE CODE (REFERRED TO FOR HIV CARE)

Change to Data Element: Changed Description, Name

- Changed Description
- Changed Name from Data_Dictionary.Data_Field_Notes.S.Site.SITE_CODE_(REFERRED_TO_FOR_HIV_CARE) to Data_Dictionary.Data_Field_Notes.S.Site.SITE_CODE_(REFERRED_TO_FOR_SHARED_HIV_CARE)

TEST OF RECENT INFECTION RESULT (HIV)

Change to Data Element: Changed Description

Format/Length:	max n3
Format/Length:	maxn3.n1
National Codes:	
Default Codes:	999 - Test invalid/sample insufficient
Default Codes:	99.9 - Test is invalid or the sample is insufficient

Notes:

[TEST OF RECENT INFECTION RESULT \(HIV\)](#) is the result of the [Clinical Investigation](#) which measures the [PATIENT](#)'s Avidity Score (a test used in conjunction with other information, to classify a newly diagnosed Human Immunodeficiency Virus (HIV) infection as recent or long standing), as recorded at the [HIV Clinic Attendance](#).

The value is presented in the range 1-120.

VIRAL LOAD COUNT

Change to Data Element: Changed Description

Format/Length:	max n7
National Codes:	
Default Codes:	

Notes:

~~VIRAL_LOAD_COUNT~~ is the result of the ~~Clinical Investigation~~ which measures the ~~PATIENT's~~ viral load count, where the ~~UNIT OF MEASUREMENT~~ is '~~Millilitres (ml)~~', as recorded at the ~~HIV Clinic Attendance~~.

For the ~~HIV and AIDS Reporting Data Set~~, ~~VIRAL_LOAD_COUNT~~ should be omitted if the ~~PATIENT's~~ viral load count has not been recorded.

VIRAL_LOAD_COUNT is the result of the Clinical Investigation which measures the PATIENT's viral load count, where the UCUM UNIT OF MEASUREMENT is 'Millilitres (ml)'.

VIRAL LOAD COUNT PERFORMED INDICATOR

Change to Data Element: Changed Description

Format/Length:	an1
National Codes:	See PATIENT PROCEDURE PERFORMED INDICATOR
Default Codes:	

Notes:

~~VIRAL_LOAD_COUNT_PERFORMED_INDICATOR~~ is the same as attribute ~~PATIENT PROCEDURE PERFORMED INDICATOR~~, to indicate if the ~~PATIENT's~~ viral load count was taken at the ~~HIV Clinic Attendance~~. VIRAL_LOAD_COUNT_PERFORMED_INDICATOR is the same as attribute PATIENT PROCEDURE PERFORMED INDICATOR, to indicate if the PATIENT's viral load count was taken. For the HIV and AIDS Reporting Data Set, VIRAL_LOAD_COUNT_PERFORMED_INDICATOR is performed at the HIV Clinic Attendance.

YEAR

Change to Data Element: New Data Element

Format/Length:	an4 YYYY
National Codes:	
Default Codes:	

Notes:

YEAR is the year of an event.

This data element is also known by these names:

Context	Alias
plural	YEARS

YEAR AND MONTH FIRST STARTED ANTIRETROVIRAL THERAPY

Change to Data Element: Changed Description, linked Attribute

Format/Length:	See YEAR AND MONTH
----------------	------------------------------------

National Codes:
Default Codes:

Notes:

YEAR AND MONTH FIRST STARTED ANTIRETROVIRAL THERAPY is the same as attribute YEAR AND MONTH FIRST STARTED ANTIRETROVIRAL THERAPY. YEAR AND MONTH FIRST STARTED ANTIRETROVIRAL THERAPY is the same as data element YEAR AND MONTH. YEAR AND MONTH FIRST STARTED ANTIRETROVIRAL THERAPY is the YEAR AND MONTH a PATIENT first started Antiretroviral Therapy, either abroad or in the United Kingdom, as stated by the PATIENT or obtained from clinical records.

YEAR AND MONTH FIRST STARTED ANTIRETROVIRAL THERAPY

Change to Data Element: Changed Description, linked Attribute

YEAR AND MONTH FIRST STARTED ANTIRETROVIRAL THERAPY

Attribute:

YEAR AND MONTH FIRST STARTED ANTIRETROVIRAL THERAPY

YEAR AND MONTH OF LAST CARE PROFESSIONAL HIV COMMUNICATION

Change to Data Element: New Data Element

Format/Length: See YEAR AND MONTH
National Codes:
Default Codes:

Notes:

YEAR AND MONTH OF LAST CARE PROFESSIONAL HIV COMMUNICATION is the same as data element YEAR AND MONTH for the HIV and AIDS Reporting Data Set.

YEAR AND MONTH OF LAST CARE PROFESSIONAL HIV COMMUNICATION is the YEAR AND MONTH of the last communication between the Health Care Provider and the GENERAL MEDICAL PRACTITIONER, where the PATIENT CONSENT OBTAINED INDICATOR (CARE PROFESSIONAL CONTACT) is National Code 'Yes - the PATIENT has consented for their GENERAL MEDICAL PRACTITIONER to be contacted about their care'.

YEAR AND MONTH OF LAST NEGATIVE HIV TEST_ renamed from YEAR AND MONTH OF LAST NEGATIVE HIV TEST IN UNITED KINGDOM

Change to Data Element: Changed Description, linked Attribute, Name

Format/Length: See YEAR AND MONTH
National Codes:
Default Codes:

Notes:

YEAR AND MONTH OF LAST NEGATIVE HIV TEST IN UNITED KINGDOM is the same as attribute YEAR AND MONTH OF LAST NEGATIVE HIV TEST IN UNITED KINGDOM. YEAR AND MONTH OF LAST NEGATIVE HIV TEST is the same as data element YEAR AND MONTH. YEAR AND MONTH OF LAST NEGATIVE HIV TEST is the YEAR AND MONTH of the latest test date where the PATIENT was tested negative for Human Immunodeficiency Virus (HIV).

This is either in or outside the United Kingdom and is taken from clinical records or PATIENT stated.

YEAR AND MONTH OF LAST NEGATIVE HIV TEST_ renamed from YEAR AND MONTH OF LAST NEGATIVE HIV TEST IN UNITED KINGDOM

Change to Data Element: Changed Description, linked Attribute, Name

YEAR AND MONTH OF LAST NEGATIVE HIV TEST IN UNITED KINGDOM

~~Attribute:~~

~~YEAR AND MONTH OF LAST NEGATIVE HIV TEST IN UNITED KINGDOM~~

YEAR OF DIAGNOSIS OUTSIDE UNITED KINGDOM (HIV)

Change to Data Element: Changed Description, linked Attribute

Format/Length:	an4
Format/Length:	See YEAR
National Codes:	
Default Codes:	

Notes:

~~YEAR OF DIAGNOSIS OUTSIDE UNITED KINGDOM (HIV)~~ is the same as the attribute ~~YEAR OF DIAGNOSIS OUTSIDE UNITED KINGDOM FOR HIV~~. [YEAR OF DIAGNOSIS OUTSIDE UNITED KINGDOM \(HIV\)](#) is the same as the data element [YEAR](#).

If the [PATIENT](#) was not first diagnosed outside of the United Kingdom, the field should be omitted. [YEAR OF DIAGNOSIS OUTSIDE UNITED KINGDOM \(HIV\)](#) is the [YEAR](#) the [PATIENT](#) was first diagnosed with Human Immunodeficiency Virus (HIV) outside of the United Kingdom.

YEAR OF DIAGNOSIS OUTSIDE UNITED KINGDOM (HIV)

Change to Data Element: Changed Description, linked Attribute

YEAR OF DIAGNOSIS OUTSIDE UNITED KINGDOM (HIV)

~~Attribute:~~

~~YEAR OF DIAGNOSIS OUTSIDE UNITED KINGDOM FOR HIV~~

YEAR OF UK ENTRY

Change to Data Element: Changed Description, linked Attribute

Format/Length:	an4
Format/Length:	See YEAR
National Codes:	
Default Codes:	

Notes:

~~YEAR OF UK ENTRY~~ is the same as attribute ~~YEAR OF UK ENTRY~~. [YEAR OF UK ENTRY](#) is the same as data element [YEAR](#).

For the [HIV and AIDS Reporting Data Set](#), if the [PATIENT](#) was born in the United Kingdom, the field should be omitted. [YEAR OF UK ENTRY](#) is the [YEAR](#) a [PERSON](#) entered the United Kingdom.

Note: this is not the date the PERSON became an official resident.

YEAR OF UK ENTRY

Change to Data Element: Changed Description, linked Attribute

YEAR OF UK ENTRY

Attribute:

YEAR OF UK ENTRY

HIV AND AIDS REPORTING DATA SET XML SCHEMA CONSTRAINTS

Change to XML Schema Constraint: Changed Description

XML Schema constraints applied to the [HIV and AIDS Reporting Data Set](#).

The "Allowed Values" column indicates the NHS Data Model and Dictionary National Codes and Default Codes present in the XML Schema:

- None = The National Codes and Default Codes are included in the XML Schema
- Removed = The National Codes and Default Codes are not included in the XML Schema.

Data Element	XML Schema Format/Length	Allowed Values	Range	Pattern Match	Reason / Comment / XML Choice
CLINICAL TRIAL INDICATOR	an1	01,02			
CONSULTATION MEDIUM USED	None	01,02,03,04,05	None	None	Default Code 99 is not valid for the HIV and AIDS Reporting Data Set
ETHNIC CATEGORY	max an2	None	National Code 06 and 98 not applicable - removed		
ETHNIC CATEGORY	max an2	None	None	None	Existing Format/Length means fixed length which is incorrect. Unable to change this as it is used in other data sets. Second character can be for local use. Format/Length amended to max an2.
GENERAL MEDICAL PRACTICE CODE (PATIENT REGISTRATION)	min an3 max an12	Removed	None	None	Field size extended to future proof for ODS ORGANISATION CODE changes
LOWER LAYER SUPER OUTPUT AREA (RESIDENCE)	an9	Removed	Field size extended to future proof for ODS ORGANISATION CODE changes		
HARS SUBMISSION IDENTIFIER	None	None	None	[0-9A-F]{8} -[0-9A-F]{4} -[0-9A-F]{4} -[0-9A-F]{4} -[0-9A-F]{12}	Format pattern applied to allow correct reporting of HARS SUBMISSION IDENTIFIER
HARS UNIQUE IDENTIFIER	None	None	None	Existing Format/Length annnnnnnnn	

				XML Schema format an9	
ORGANISATION CODE (CODE OF PROVIDER)	min an3 max an12	Removed	[0-9A-F]{8} -[0-9A-F]{4} -[0-9A-F]{4} -[0-9A-F]{4} -[0-9A-F]{12}	Format pattern applied to allow correct reporting of HARS UNIQUE IDENTIFIER	
ORGANISATION CODE (CODE OF PROVIDER)	min an3 max an12	Removed	None	None	Field size extended to future proof for ODS ORGANISATION SITE CODE changes
ORGANISATION CODE (CODE OF SUBMITTING ORGANISATION)	min an3 max an12	None	Field size extended to future proof for ODS ORGANISATION CODE changes		
ORGANISATION CODE (CODE OF SUBMITTING ORGANISATION)	min an3 max an12	None	None	None	Field size extended to future proof for ODS ORGANISATION CODE changes
SITE CODE (OF PREVIOUS HIV CARE)	min an3 max an12	Removed	None	None	Field size extended to future proof for ODS ORGANISATION SITE CODE changes
SITE CODE (OF TREATMENT)	min an3 max an12	Removed	None	None	Field size extended to future proof for ODS ORGANISATION SITE CODE changes
SITE CODE (REFERRED TO FOR HIV CARE)	min an3 max an12	None	Field size extended to future proof for ODS ORGANISATION SITE CODE changes		
SITE CODE (REFERRED TO FOR SHARED HIV CARE)	min an3 max an12	None	None	None	Field size extended to future proof for ODS ORGANISATION SITE CODE changes
TEST OF RECENT INFECTION RESULT (HIV)	None	None	Field size extended to future proof for ODS ORGANISATION SITE CODE changes		
TEST OF RECENT INFECTION RESULT (HIV)	None	None	1-120	None	\d{1,3}\.\d{1}
YEAR OF DIAGNOSIS OUTSIDE UNITED KINGDOM (HIV)	None	None	None	Range 1-120 plus default code 999	

YYYY

Format pattern applied to allow correct reporting of [YEAR OF DIAGNOSIS OUTSIDE UNITED KINGDOM \(HIV\)](#)
[YEAR OF UK ENTRY](#)None

None

None

YYYY

Format pattern applied to allow correct reporting of [YEAR OF UK ENTRY](#)

For enquiries about this Change Request, please email information.standards@nhs.net