

NHS Data Model and Dictionary



Type: Change Request
Reference: 1595
Version No: 1.0
Subject: Stop Smoking Services Quarterly Data Set
Effective Date: Immediate
Reason for Change: Change to Information Standards
Publication Date: 25 September 2017

Background:

The Stop Smoking Service Quarterly Data Set, which was introduced by [CR914 DSCN 05/2009](#) has been revised to comply with the latest version of the data set which was introduced in April 2014.

This Change Request updates the NHS Data Model and Dictionary to reflect the latest version of the Stop Smoking Service Quarterly Data Set, and retires items which are no longer included in the Stop Smoking Service Quarterly Data Set, or any other data set within the NHS Data Model and Dictionary.

To view a demonstration on "How to Read an NHS Data Model and Dictionary Change Request", visit the NHS Data Model and Dictionary help pages at: http://www.datadictionary.nhs.uk/Flash_Files/changerequest.htm.

Note: if the web page does not open, please copy the link and paste into the web browser.

Summary of changes:

Diagrams

ACTIVITY DIAGRAM	Changed Diagram
CANCER OUTCOMES AND SERVICES DIAGRAM	Changed Diagram
CHILDREN AND YOUNG PEOPLE'S HEALTH SERVICES DIAGRAM	Changed Diagram
COMMUNITY INFORMATION DIAGRAM	Changed Diagram
HIV AND AIDS DIAGRAM	Changed Diagram
IMPROVING ACCESS TO PSYCHOLOGICAL THERAPIES DIAGRAM	Changed Diagram
MATERNITY SERVICES DIAGRAM	Changed Diagram
NATIONAL JOINT REGISTRY DIAGRAM	Changed Diagram
NATIONAL RENAL DIAGRAM	Changed Diagram
PATIENT PATHWAY DIAGRAM	Changed Diagram
RADIOTHERAPY DIAGRAM	Changed Diagram
SYSTEMIC ANTI-CANCER THERAPY DIAGRAM	Changed Diagram

Data Set

STOP SMOKING SERVICES QUARTERLY DATA SET	Changed Dataset, Description
--	------------------------------

Supporting Information

DEPARTMENT OF HEALTH	Changed Dataset
INTENDED SMOKING QUIT DATE	New Supporting Information
NATIONAL CENTRE FOR SMOKING CESSATION AND TRAINING	New Supporting Information
PERSON STOP SMOKING EPISODE	Changed Description
REFERENCED ORGANISATIONS MENU	Changed Description
SMOKING QUIT DATE (RETIRED) renamed from SMOKING QUIT DATE	Changed Description, status to Retired, Name
STOP SMOKING SERVICE	Changed Description
STOP SMOKING SERVICE QUARTERLY DATA SET OVERVIEW	Changed Dataset, Description

Class Definitions

ACTIVITY GROUP	Changed Attributes
CLINICAL INTERVENTION	Changed Attributes
CURRENCY (RETIRED) renamed from CURRENCY	Changed Relationships, Description, status to Retired, Name

[REPORTING PERIOD](#)
[SERVICE FINANCIAL ALLOCATION](#)
[SOCIO-ECONOMIC CLASSIFICATION](#)

Changed Attributes
Changed Attributes
Changed Description,
Attributes

Attribute Definitions

[ACTIVITY DATE AND TIME TYPE](#)
[ACTIVITY DATE TYPE](#)
[ETHNIC CATEGORY CODE](#)
[FINANCIAL ALLOCATION OR SPEND TYPE \(RETIRED\)](#) renamed from [FINANCIAL ALLOCATION OR SPEND TYPE](#)
[FINANCIAL ALLOCATION OR SPEND TYPE FOR STOP SMOKING](#)
[FINANCIAL AMOUNT](#)
[FREE PRESCRIPTIONS INDICATOR](#)
[INTERVENTION SESSION TYPE \(RETIRED\)](#) renamed from [INTERVENTION SESSION TYPE](#)

Changed Description
Changed Description
Changed Dataset
Changed Description, status to Retired, Name
New Attribute
Changed Dataset
Changed Description
Changed Dataset, Description, status to Retired, Name

[INTERVENTION SESSION TYPE FOR STOP SMOKING](#)
[INTERVENTION SETTING \(RETIRED\)](#) renamed from [INTERVENTION SETTING](#)

New Attribute
Changed Dataset, Description, status to Retired, Name

[INTERVENTION SETTING TYPE FOR STOP SMOKING](#)
[NON SMOKING CONFIRMATION STATUS INDICATOR AT 4 WEEKS](#) renamed from [NON SMOKING CONFIRMATION STATUS AT 4 WEEKS](#)
[ORGANISATION CODE](#)
[ORGANISATION IDENTIFIER](#)
[OUTCOME AT 4 WEEK FOLLOW-UP FOR STOP SMOKING](#) renamed from [OUTCOME AT 4 WEEK FOLLOW-UP](#)
[PERSON GENDER CODE](#)
[PERSON OBSERVATION TEXT STRING](#)
[PERSON STATED GENDER CODE](#)
[PHARMACOTHERAPY STOP SMOKING AID RECEIVED](#)

New Attribute
Changed Description, Name
Changed Dataset
Changed Dataset
Changed Description, Name

[PREGNANCY STATUS](#)
[REPORTING PERIOD END DATE](#)
[REPORTING PERIOD QUARTER END DATE](#)
[REPORTING PERIOD QUARTER START DATE](#)
[REPORTING PERIOD START DATE](#)
[SMOKING QUIT DATE \(RETIRED\)](#) renamed from [SMOKING QUIT DATE](#)

Changed Dataset
Changed Dataset
Changed Dataset
Changed Dataset, Description
Changed Description
Changed Dataset
New Attribute
New Attribute
Changed Dataset
Changed Description, status to Retired, Name
Changed Dataset, Description, status to Retired, Name
New Attribute

[SOCIO-ECONOMIC CLASSIFICATION CODE \(RETIRED\)](#) renamed from [SOCIO-ECONOMIC CLASSIFICATION CODE](#)

[SOCIO-ECONOMIC CLASSIFICATION CODE FOR STOP SMOKING](#)

Data Elements

[AGE BAND AT SMOKING QUIT DATE](#)

Changed Dataset, Description

[ETHNIC CATEGORY](#)

Changed Dataset, Description

[INTERVENTION SESSION TYPE \(STOP SMOKING\)](#)

Changed Dataset, Description, linked Attribute

[INTERVENTION SETTING TYPE \(STOP SMOKING\)](#) renamed from [INTERVENTION SETTING \(STOP SMOKING\)](#)

Changed Dataset, Description, Name, linked Attribute

[ORGANISATION CODE \(STOP SMOKING SERVICE PROVIDER\) \(RETIRED\)](#) renamed from [ORGANISATION CODE \(STOP SMOKING SERVICE PROVIDER\)](#)

Changed Dataset, Description, status to Retired, Name, linked Attribute

[ORGANISATION IDENTIFIER \(STOP SMOKING SERVICE PROVIDER\)](#)

New Data Element

[PERSON GENDER CURRENT \(RETIRED\)](#) renamed from [PERSON GENDER CURRENT](#)

Changed Dataset, Description, status to Retired, Name, linked Attribute

[PERSON PHENOTYPIC SEX](#)

Changed Description

[PERSON STATED GENDER CODE](#)

Changed Description

[PERSON STATED GENDER CODE \(STOP SMOKING\)](#)

New Data Element

[PHARMACOTHERAPY STOP SMOKING AID RECEIVED](#)

REPORTING PERIOD END DATE	Changed Dataset, Description
REPORTING PERIOD QUARTER END DATE	Changed Dataset
REPORTING PERIOD QUARTER START DATE	New Data Element
REPORTING PERIOD START DATE	New Data Element
SOCIO-ECONOMIC CLASSIFICATION CODE (STOP SMOKING)	Changed Dataset
STOP SMOKING EXCEPTION VALIDATION INDICATOR (RETIRED) renamed from STOP SMOKING EXCEPTION VALIDATION INDICATOR	Changed Dataset, Description, linked Attribute
STOP SMOKING INTERVENTION SESSION TYPE REASON FOR EXCEPTION renamed from STOP SMOKING INTERVENTION TYPE REASON FOR EXCEPTION	Changed Dataset, Description, status to Retired, Name
STOP SMOKING INTERVENTION SETTING TYPE REASON FOR EXCEPTION renamed from STOP SMOKING INTERVENTION SETTING REASON FOR EXCEPTION	Changed Dataset, Description, Name, linked Attribute
STOP SMOKING INTERVENTION SETTING TYPE REASON FOR EXCEPTION renamed from STOP SMOKING INTERVENTION SETTING REASON FOR EXCEPTION	Changed Dataset, Description, Name, linked Attribute
STOP SMOKING LOST TO FOLLOW-UP COUNT (AGE AND GENDER) (RETIRED) renamed from STOP SMOKING LOST TO FOLLOW-UP COUNT (AGE AND GENDER)	Changed Dataset, Description, status to Retired, Name
STOP SMOKING LOST TO FOLLOW-UP TOTAL	New Data Element
STOP SMOKING LOST TO FOLLOW-UP TOTAL (PREGNANT WOMEN) renamed from STOP SMOKING LOST TO FOLLOW-UP COUNT (PREGNANT WOMEN)	Changed Dataset, Description, Name
STOP SMOKING NOT QUIT AT 4 WEEKS COUNT (AGE AND GENDER) (RETIRED) renamed from STOP SMOKING NOT QUIT AT 4 WEEKS COUNT (AGE AND GENDER)	Changed Dataset, Description, status to Retired, Name
STOP SMOKING NOT QUIT AT 4 WEEKS COUNT (PREGNANT WOMEN) (RETIRED) renamed from STOP SMOKING NOT QUIT AT 4 WEEKS COUNT (PREGNANT WOMEN)	Changed Dataset, Description, status to Retired, Name
STOP SMOKING NOT QUIT TOTAL	New Data Element
STOP SMOKING NOT QUIT TOTAL (PREGNANT WOMEN)	New Data Element
STOP SMOKING QUIT CONFIRMED COUNT (AGE AND GENDER) (RETIRED) renamed from STOP SMOKING QUIT CONFIRMED COUNT (AGE AND GENDER)	Changed Dataset, Description, status to Retired, Name
STOP SMOKING SERVICE CUMULATIVE SPEND	New Data Element
STOP SMOKING SERVICE CUMULATIVE TOTAL SPEND (RETIRED) renamed from STOP SMOKING SERVICE CUMULATIVE TOTAL SPEND	Changed Dataset, Description, status to Retired, Name
STOP SMOKING SERVICE LOCAL AUTHORITY FINANCIAL ALLOCATION	New Data Element
STOP SMOKING SERVICE OTHER FINANCIAL ALLOCATION	Changed Dataset, Description, linked Attribute
STOP SMOKING SERVICE PCT FINANCIAL ALLOCATION (RETIRED) renamed from STOP SMOKING SERVICE PCT FINANCIAL ALLOCATION	Changed Dataset, Description, status to Retired, Name
STOP SMOKING SERVICE PHARMACOTHERAPY SPEND	New Data Element
STOP SMOKING SETTING QUIT DATE COUNT (AGE AND GENDER) (RETIRED) renamed from STOP SMOKING SETTING QUIT DATE COUNT (AGE AND GENDER)	Changed Dataset, Description, status to Retired, Name
STOP SMOKING SETTING QUIT DATE COUNT (AID) (RETIRED) renamed from STOP SMOKING SETTING QUIT DATE COUNT (AID)	Changed Dataset, Description, status to Retired, Name
STOP SMOKING SETTING QUIT DATE COUNT (ETHNIC CATEGORY AND GENDER) (RETIRED) renamed from STOP SMOKING SETTING QUIT DATE COUNT (ETHNIC CATEGORY AND GENDER)	Changed Dataset, Description, status to Retired, Name
STOP SMOKING SETTING QUIT DATE COUNT (INTERVENTION SETTING) (RETIRED) renamed from STOP SMOKING SETTING QUIT DATE COUNT (INTERVENTION SETTING)	Changed Dataset, Description, status to Retired, Name
STOP SMOKING SETTING QUIT DATE COUNT (INTERVENTION TYPE) (RETIRED) renamed from STOP SMOKING SETTING QUIT DATE COUNT (INTERVENTION TYPE)	Changed Dataset, Description, status to Retired, Name
STOP SMOKING SETTING QUIT DATE COUNT (PREGNANT WOMEN) (RETIRED) renamed from STOP SMOKING SETTING QUIT DATE COUNT (PREGNANT WOMEN)	Changed Dataset, Description, status to Retired, Name
STOP SMOKING SETTING QUIT DATE COUNT (SOCIO ECONOMIC CLASSIFICATION) (RETIRED) renamed from STOP SMOKING SETTING QUIT DATE COUNT (SOCIO ECONOMIC CLASSIFICATION)	Changed Dataset, Description, status to Retired, Name
STOP SMOKING SETTING QUIT DATE TOTAL	New Data Element
STOP SMOKING SETTING QUIT DATE TOTAL (FREE PRESCRIPTION) renamed from STOP SMOKING SETTING QUIT DATE COUNT (FREE PRESCRIPTION)	Changed Dataset, Description, Name

<u>STOP SMOKING SUCCESSFULLY QUIT CARBON MONOXIDE VALIDATION TOTAL</u>	New Data Element
<u>STOP SMOKING SUCCESSFULLY QUIT CARBON MONOXIDE VALIDATION TOTAL (PREGNANT WOMEN)</u> renamed from <u>STOP SMOKING QUIT CONFIRMED COUNT (PREGNANT WOMEN)</u>	Changed Dataset, Description, Name
<u>STOP SMOKING SUCCESSFULLY QUIT COUNT (AGE AND GENDER) (RETIRED)</u> renamed from <u>STOP SMOKING SUCCESSFULLY QUIT COUNT (AGE AND GENDER)</u>	Changed Dataset, Description, status to Retired, Name
<u>STOP SMOKING SUCCESSFULLY QUIT COUNT (AID) (RETIRED)</u> renamed from <u>STOP SMOKING SUCCESSFULLY QUIT COUNT (AID)</u>	Changed Dataset, Description, status to Retired, Name
<u>STOP SMOKING SUCCESSFULLY QUIT COUNT (ETHNIC CATEGORY AND GENDER) (RETIRED)</u> renamed from <u>STOP SMOKING SUCCESSFULLY QUIT COUNT (ETHNIC CATEGORY AND GENDER)</u>	Changed Dataset, Description, status to Retired, Name
<u>STOP SMOKING SUCCESSFULLY QUIT COUNT (INTERVENTION SETTING) (RETIRED)</u> renamed from <u>STOP SMOKING SUCCESSFULLY QUIT COUNT (INTERVENTION SETTING)</u>	Changed Dataset, Description, status to Retired, Name
<u>STOP SMOKING SUCCESSFULLY QUIT COUNT (INTERVENTION TYPE) (RETIRED)</u> renamed from <u>STOP SMOKING SUCCESSFULLY QUIT COUNT (INTERVENTION TYPE)</u>	Changed Dataset, Description, status to Retired, Name
<u>STOP SMOKING SUCCESSFULLY QUIT COUNT (SOCIO ECONOMIC CLASSIFICATION) (RETIRED)</u> renamed from <u>STOP SMOKING SUCCESSFULLY QUIT COUNT (SOCIO ECONOMIC CLASSIFICATION)</u>	Changed Dataset, Description, status to Retired, Name
<u>STOP SMOKING SUCCESSFULLY QUIT TOTAL</u>	New Data Element
<u>STOP SMOKING SUCCESSFULLY QUIT TOTAL (FREE PRESCRIPTION)</u> renamed from <u>STOP SMOKING SUCCESSFULLY QUIT COUNT (FREE PRESCRIPTION)</u>	Changed Dataset, Description, Name
<u>STOP SMOKING SUCCESSFULLY QUIT TOTAL (PREGNANT WOMEN)</u> renamed from <u>STOP SMOKING SUCCESSFULLY QUIT COUNT (PREGNANT WOMEN)</u>	Changed Dataset, Description, Name

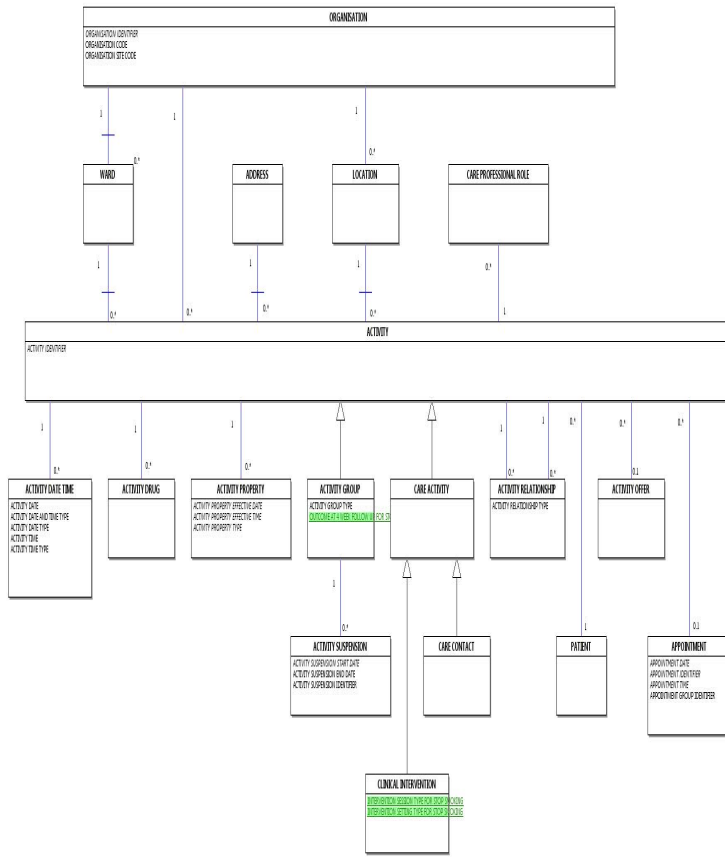
Date: 25 September 2017

Sponsor: Martin Dockrell, Tobacco Control Programme Lead, Public Health England

Note: New text is shown with a blue background. Deleted text is crossed out. Retired text is shown in grey. Within the Diagrams deleted classes and relationships are red, changed items are blue and new items are green.

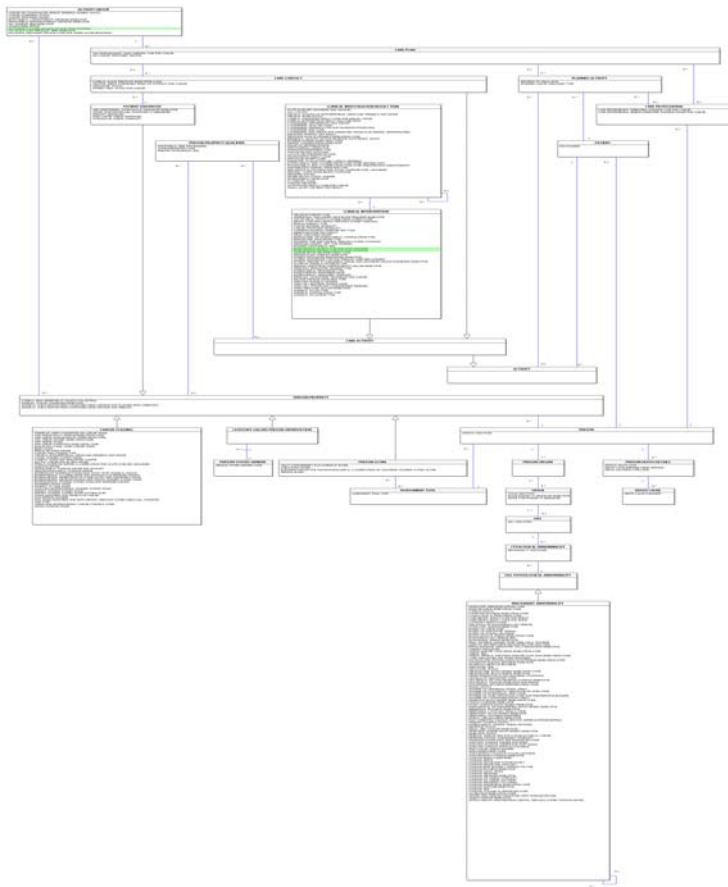
ACTIVITY DIAGRAM

Change to Diagram: Changed Diagram



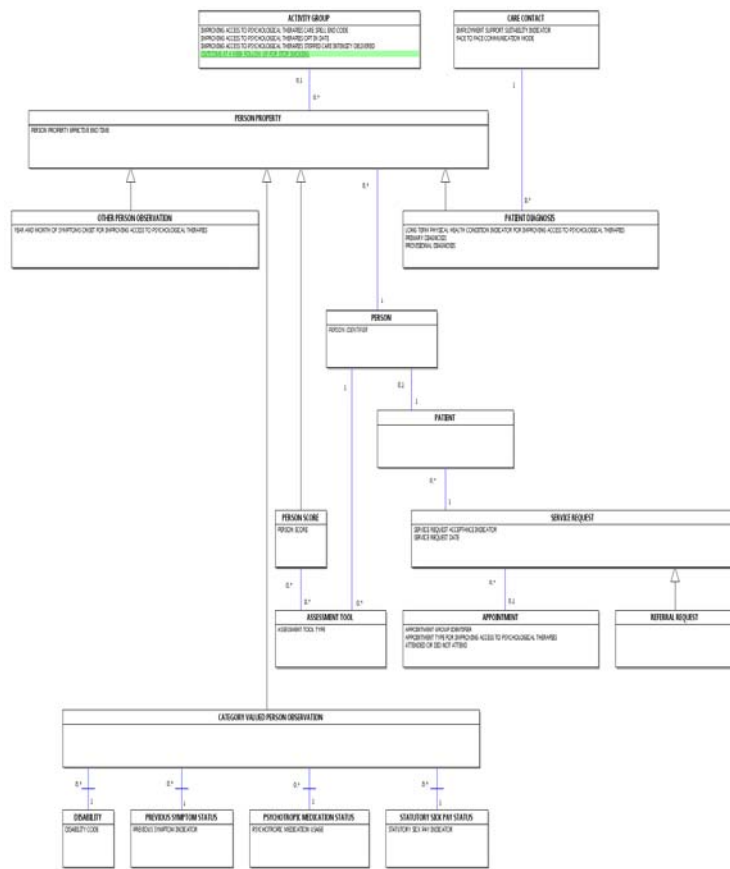
CANCER OUTCOMES AND SERVICES DIAGRAM

Change to Diagram: Changed Diagram



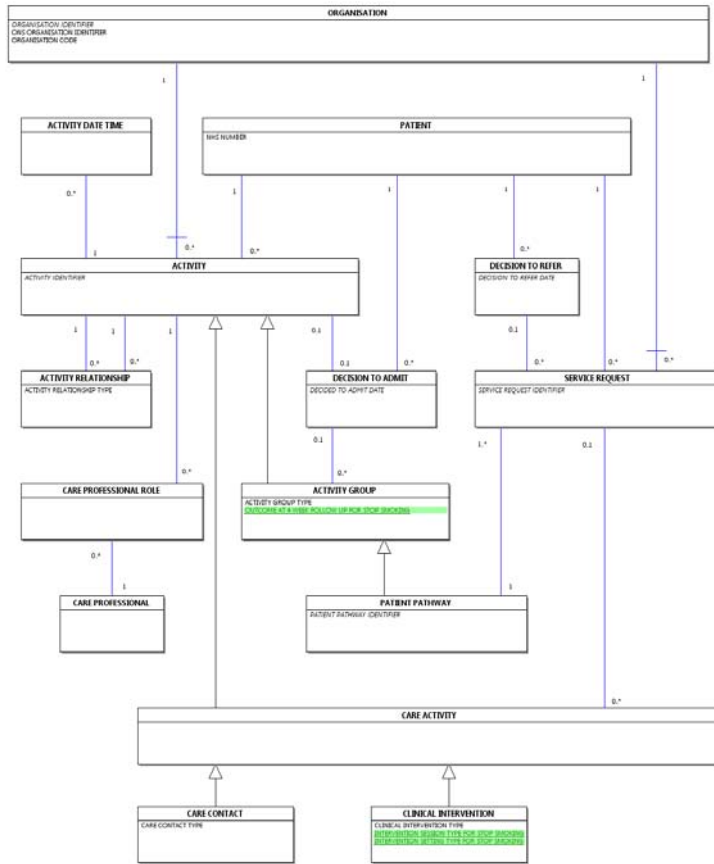
IMPROVING ACCESS TO PSYCHOLOGICAL THERAPIES DIAGRAM

Change to Diagram: Changed Diagram



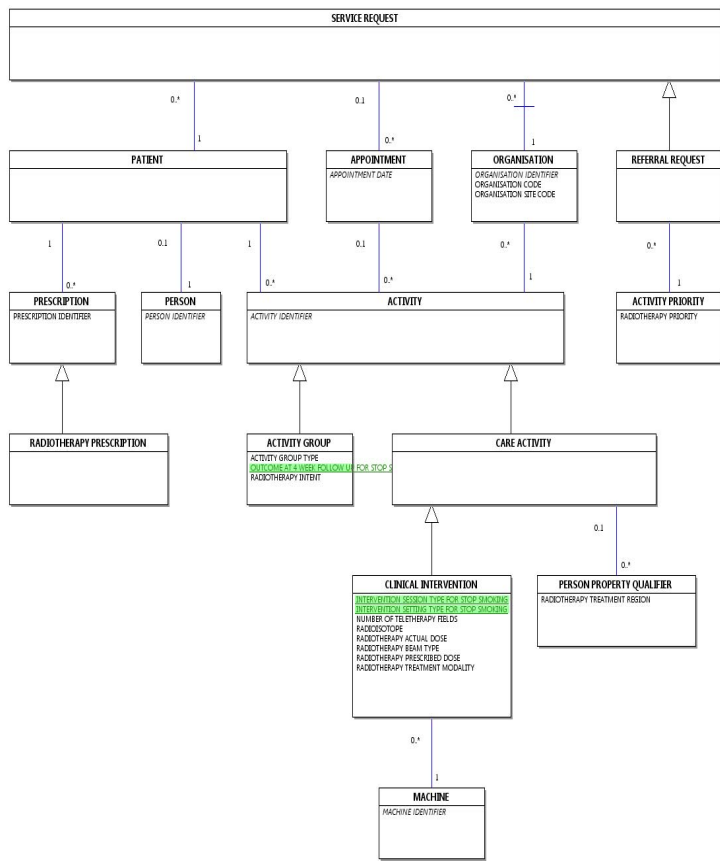
PATIENT PATHWAY DIAGRAM

Change to Diagram: Changed Diagram



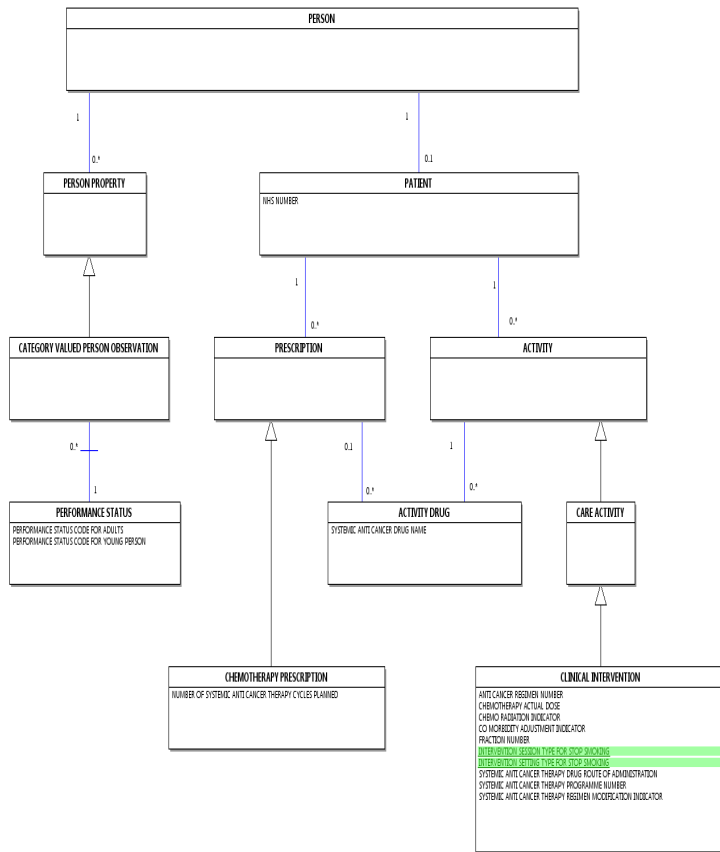
RADIOTHERAPY DIAGRAM

Change to Diagram: Changed Diagram



SYSTEMIC ANTI-CANCER THERAPY DIAGRAM

Change to Diagram: Changed Diagram



STOP SMOKING SERVICES QUARTERLY DATA SET

Change to Data Set: Changed Dataset, Description

This return is out of date therefore the information should not be used.

For the latest version of the guidance, please see the [Department of Health](#) part of the gov.uk website at: [Stop Smoking Service: monitoring and guidance update](#). Stop Smoking Service Quarterly Data Set Overview

[Stop Smoking Service Quarterly Data Set Overview](#) Click [Stop Smoking Services Quarterly Data Set](#) for a "Full Screen" view.

In the "Full Screen" view, to return to the "Data Set" view, click the browser "back" button.

The Mandatory/ Required (M/R) column indicates the recommendation for the inclusion of data.

- **M = Mandatory:** this data element is mandatory and the technical process (e.g. submission of the data set, production of output etc.) cannot be completed without this data element being present
- **R = Required:** NHS business processes cannot be delivered without this data element

Data Set Data Elements
Organisation and Reporting Period
REPORTING PERIOD START DATE
REPORTING PERIOD END DATE
ORGANISATION CODE (STOP SMOKING SERVICE PROVIDER)
Part 1 – Summary data for individual people
Part 1A – Number of people setting a smoking quit date and number who have successfully quit by ethnic category and gender. This group will be repeated for each ethnic category and gender:
ETHNIC CATEGORY
PERSON GENDER CURRENT
STOP SMOKING SETTING QUIT DATE COUNT (ETHNIC CATEGORY AND GENDER)
STOP SMOKING SUCCESSFULLY QUIT COUNT (ETHNIC CATEGORY AND GENDER)
Part 1B – Number of people setting a smoking quit date and the number who have successfully quit by age and gender and outcome. This group will be repeated for each age band and gender:
AGE BAND AT SMOKING QUIT DATE

PERSON GENDER CURRENT
STOP SMOKING SETTING QUIT DATE COUNT (AGE AND GENDER)
STOP SMOKING SUCCESSFULLY QUIT COUNT (AGE AND GENDER)
STOP SMOKING NOT QUIT AT 4 WEEKS COUNT (AGE AND GENDER)
STOP SMOKING LOST TO FOLLOW UP COUNT (AGE AND GENDER)
STOP SMOKING QUIT CONFIRMED COUNT (AGE AND GENDER)
Part 1C – Number of pregnant women setting a smoking quit date and the number of those who have successfully quit. One occurrence of this group is permitted.
STOP SMOKING SETTING QUIT DATE COUNT (PREGNANT WOMEN)
STOP SMOKING SUCCESSFULLY QUIT COUNT (PREGNANT WOMEN)
STOP SMOKING NOT QUIT AT 4 WEEKS COUNT (PREGNANT WOMEN)
STOP SMOKING LOST TO FOLLOW UP COUNT (PREGNANT WOMEN)
STOP SMOKING QUIT CONFIRMED COUNT (PREGNANT WOMEN)
Part 1D – Number of people who are entitled to receive free prescriptions setting a smoking quit date and the number of those who have successfully quit. One occurrence of this group is permitted.
STOP SMOKING SETTING QUIT DATE COUNT (FREE PRESCRIPTION)
STOP SMOKING SUCCESSFULLY QUIT COUNT (FREE PRESCRIPTION)
Part 1E – Number of people of a particular socio-economic classification setting a smoking quit date and the number of those who have successfully quit. This group will be repeated for each socio-economic classification.
SOCIO ECONOMIC CLASSIFICATION CODE (STOP SMOKING)
STOP SMOKING SETTING QUIT DATE COUNT (SOCIO ECONOMIC CLASSIFICATION)
STOP SMOKING SUCCESSFULLY QUIT COUNT (SOCIO ECONOMIC CLASSIFICATION)
Part 1F – Number of people setting a smoking quit date and the number of those who have successfully quit by pharmacotherapy stop smoking aid received. This group will be repeated for each pharmacotherapy stop smoking aid received.
PHARMACOTHERAPY STOP SMOKING AID RECEIVED
STOP SMOKING SETTING QUIT DATE COUNT (AID)
STOP SMOKING SUCCESSFULLY QUIT COUNT (AID)
Part 1G – Number of people setting a smoking quit date and number who have successfully quit by intervention type used. This group will be repeated for each intervention type.
INTERVENTION SESSION TYPE (STOP SMOKING)
STOP SMOKING SETTING QUIT DATE COUNT (INTERVENTION TYPE)
STOP SMOKING SUCCESSFULLY QUIT COUNT (INTERVENTION TYPE)
STOP SMOKING INTERVENTION TYPE REASON FOR EXCEPTION
STOP SMOKING EXCEPTION VALIDATION INDICATOR
Part 1H – Number of people setting a smoking quit date and number who have successfully quit by intervention setting used. This group will be repeated for each intervention setting.
INTERVENTION SETTING (STOP SMOKING)
STOP SMOKING SETTING QUIT DATE COUNT (INTERVENTION SETTING)
STOP SMOKING SUCCESSFULLY QUIT COUNT (INTERVENTION SETTING)
STOP SMOKING INTERVENTION SETTING REASON FOR EXCEPTION
STOP SMOKING EXCEPTION VALIDATION INDICATOR
Part 2a – Financial allocations for the year. One occurrence of this group is permitted.
STOP SMOKING SERVICE PCT FINANCIAL ALLOCATION
STOP SMOKING SERVICE OTHER FINANCIAL ALLOCATION
Part 2b – Cumulative total spend on Stop Smoking Service for the year up to the REPORTING PERIOD END DATE. One occurrence of this group is permitted.
STOP SMOKING SERVICE CUMULATIVE TOTAL SPEND
SUBMISSION IDENTIFIER

To carry the submission identifier details. One occurrence of this group is required.	
M/R	Data Set Data Elements
M	ORGANISATION IDENTIFIER (STOP SMOKING SERVICE PROVIDER)
M	REPORTING PERIOD QUARTER START DATE
M	REPORTING PERIOD QUARTER END DATE

PART 1 - SUMMARY DATA FOR INDIVIDUALS

Part 1A - Number of people setting a smoking quit date and number who have successfully quit by ethnic category and gender. One occurrence of this group is required per ethnic category and gender.	
M/R	Data Set Data Elements
M	ETHNIC CATEGORY
M	PERSON STATED GENDER CODE (STOP SMOKING)

M	STOP SMOKING SETTING QUIT DATE TOTAL
M	STOP SMOKING SUCCESSFULLY QUIT TOTAL

Part 1B - Number of people setting a smoking quit date by age, gender and outcome at 4 week follow-up.
One occurrence of this group is required per age band and gender.

M/R	Data Set Data Elements
M	AGE BAND AT SMOKING QUIT DATE
M	PERSON STATED GENDER CODE (STOP SMOKING)
M	STOP SMOKING SETTING QUIT DATE TOTAL
M	STOP SMOKING SUCCESSFULLY QUIT TOTAL
M	STOP SMOKING NOT QUIT TOTAL
M	STOP SMOKING LOST TO FOLLOW-UP TOTAL
M	STOP SMOKING SUCCESSFULLY QUIT CARBON MONOXIDE VALIDATION TOTAL

Part 1C - Number of pregnant women setting a smoking quit date by outcome at 4 week follow-up.
One occurrence of this group is required.

M/R	Data Set Data Elements
M	STOP SMOKING SUCCESSFULLY QUIT TOTAL (PREGNANT WOMEN)
M	STOP SMOKING NOT QUIT TOTAL (PREGNANT WOMEN)
M	STOP SMOKING LOST TO FOLLOW-UP TOTAL (PREGNANT WOMEN)
M	STOP SMOKING SUCCESSFULLY QUIT CARBON MONOXIDE VALIDATION TOTAL (PREGNANT WOMEN)

Part 1D - Number of people who receive free prescriptions setting a smoking quit date and the number of those who have successfully quit.
One occurrence of this group is required.

M/R	Data Set Data Elements
M	STOP SMOKING SETTING QUIT DATE TOTAL (FREE PRESCRIPTION)
M	STOP SMOKING SUCCESSFULLY QUIT TOTAL (FREE PRESCRIPTION)

Part 1E - Number of people setting a smoking quit date and the number who have successfully quit by socio-economic classification.
One occurrence of this group is required per socio-economic classification.

M/R	Data Set Data Elements
M	SOCIO-ECONOMIC CLASSIFICATION CODE (STOP SMOKING)
M	STOP SMOKING SETTING QUIT DATE TOTAL
M	STOP SMOKING SUCCESSFULLY QUIT TOTAL

Part 1F - Number of people setting a smoking quit date and the number who have successfully quit by pharmacotherapy stop smoking aid received.
One occurrence of this group is required per pharmacotherapy stop smoking aid received.

M/R	Data Set Data Elements
M	PHARMACOTHERAPY STOP SMOKING AID RECEIVED
M	STOP SMOKING SETTING QUIT DATE TOTAL
M	STOP SMOKING SUCCESSFULLY QUIT TOTAL

Part 1G - Number of people setting a smoking quit date and number who have successfully quit by intervention session type used.
One occurrence of this group is required per intervention session type.

M/R	Data Set Data Elements
M	INTERVENTION SESSION TYPE (STOP SMOKING)
M	STOP SMOKING SETTING QUIT DATE TOTAL
M	STOP SMOKING SUCCESSFULLY QUIT TOTAL
R	STOP SMOKING INTERVENTION SESSION TYPE REASON FOR EXCEPTION

Part 1H - Number of people setting a smoking quit date and number who have successfully quit by intervention setting type used.
One occurrence of this group is required per intervention setting type.

M/R	Data Set Data Elements
M	INTERVENTION SETTING TYPE (STOP SMOKING)
M	STOP SMOKING SETTING QUIT DATE TOTAL
M	STOP SMOKING SUCCESSFULLY QUIT TOTAL
R	STOP SMOKING INTERVENTION SETTING TYPE REASON FOR EXCEPTION

PART 2 - SUMMARY FINANCIAL ALLOCATION

**Part 2A - Financial allocation for the year.
One occurrence of this group is required.**

M/R	Data Set Data Elements
M	STOP SMOKING SERVICE LOCAL AUTHORITY FINANCIAL ALLOCATION

**Part 2B - Cumulative total spend on Stop Smoking Services for the year up to the end of the quarter by type of allocation.
One occurrence of this group is required.**

M/R	Data Set Data Elements
M	STOP SMOKING SERVICE CUMULATIVE SPEND
M	STOP SMOKING SERVICE PHARMACOTHERAPY SPEND
M	STOP SMOKING SERVICE OTHER FINANCIAL ALLOCATION

DEPARTMENT OF HEALTH

Change to Supporting Information: Changed Dataset

The [Department of Health \(DH\)](#) is an [Organisation](#).

The [Department of Health](#) helps people to live better for longer. They lead, shape and fund health and care in England, making sure people have the support, care and treatment they need, with the compassion, respect and dignity they deserve.

For further information on the [Department of Health](#), see the [Department of Health](#) part of the [gov.uk website](#).

A new health and care system became fully operational from 1 April 2013 to deliver the ambitions set out in the Health and Social Care Act 2012.

To achieve this, the [Department of Health](#) is supported by a number of agencies and public bodies, including:

- [Care Quality Commission](#)
- [Health Education England](#)
- [Health Research Authority](#)
- [National Institute for Health and Care Excellence](#)
- [NHS Digital](#)
- [NHS England](#)
- [NHS Business Services Authority](#)
- [NHS Improvement](#)
- [Public Health England](#).

For further information on the role of the [Department of Health](#) in the new system, see the [Department of Health](#) part of the [gov.uk website](#).

INTENDED SMOKING QUIT DATE

Change to Supporting Information: New Supporting Information

[Intended Smoking Quit Date](#) is an [ACTIVITY DATE TIME](#).

[Intended Smoking Quit Date](#) is the [DATE](#) set by a [PERSON](#) on which they intend to stop smoking.

For [PERSONS](#) using bupropion, it is recommended that an [Intended Smoking Quit Date](#) is set within the first 2 weeks of therapy, usually in the second week, e.g. day 8.

For [PERSONS](#) using varenicline, current license specification and preliminary guidance indicates that an [Intended Smoking Quit Date](#) should fall on the 8th day after commencement of dosing with varenicline.

This supporting information is also known by these names:

Context	Alias
plural	Intended Smoking Quit Dates

NATIONAL CENTRE FOR SMOKING CESSATION AND TRAINING

Change to Supporting Information: New Supporting Information

The National Centre for Smoking Cessation and Training (NCSCCT) is an Organisation.

The National Centre for Smoking Cessation and Training supports the delivery of effective evidence-based tobacco control programmes and smoking cessation interventions provided by local Stop Smoking Services.

The National Centre for Smoking Cessation and Training works with and for the field to deliver training and assessment programmes, support SERVICES for local and national providers and conducts research into behavioural support for smoking cessation.

For further information on the National Centre for Smoking Cessation and Training, please visit the National Centre for Smoking Cessation and Training website.

This supporting information is also known by these names:

Context	Alias
shortname	NCSCCT

PERSON STOP SMOKING EPISODE

Change to Supporting Information: Changed Description

A Person Stop Smoking Episode is an ACTIVITY GROUP.

A Person Stop Smoking Episode is a period of time during which a PERSON attempts to stop smoking as a result of structured stop smoking interventions, delivered by NHS staff or their trained agents. During this time, it is expected that the PERSON will set a SMOKING QUIT DATE. A Person Stop Smoking Episode is a period of time during which a PERSON attempts to stop smoking as a result of structured stop smoking interventions, delivered by Stop Smoking Service staff trained to National Centre for Smoking Cessation and Training level 2 standard or equivalent. During this time, it is expected that the PERSON will set an Intended Smoking Quit Date.

The Person Stop Smoking Episode:

- starts when the PERSON has consented to a programme of treatment and presents themselves to the Stop Smoking Service for a treatment session and has set a SMOKING QUIT DATE
- ends 28 days after their specified SMOKING QUIT DATE (or within 25 to 42 days of the SMOKING QUIT DATE) when it is confirmed that the PERSON:
 - has stopped smoking
 - has not been successful or
 - are lost to follow up (where the PERSON could not be contacted at four weeks (- 3 days or +14 days)).
- starts when the PERSON has consented to a programme of treatment and presents themselves to the Stop Smoking Service for a treatment session and has set an Intended Smoking Quit Date
- ends 28 days after their specified Intended Smoking Quit Date (or within 25 to 42 days of the Intended Smoking Quit Date) when it is confirmed that the PERSON:
 - has stopped smoking
 - has not been successful or
 - are lost to follow up (where the PERSON could not be contacted at four weeks (within 25 to 42 days)).

A PERSON who has participated in an assessment session but failed to attend for treatment should not be counted as having started a Person Stop Smoking Episode.

For further information, see the Department of Health part of the gov.uk website at Stop Smoking Service: monitoring and guidance update. Further information on the NHS Stop Smoking Services and the monitoring guidance can be found on the National Centre for Smoking Cessation and Training website at Local Stop Smoking Services: Service and Delivery Guidance 2014.

REFERENCED ORGANISATIONS MENU

Change to Supporting Information: Changed Description

- [NHS Business Definitions](#)
- [Organisations](#)
- [Regulatory Bodies](#)
- **Referenced Organisations:**
 - [American Joint Committee on Cancer](#)
 - [British Association for Paediatric Nephrology](#)
 - [British HIV Association](#)
 - [British Psychological Society](#)
 - [British Renal Society](#)

- [British Transplantation Society](#)
- [Burden Advice and Assessment Service](#)
- [Care Quality Commission](#)
- [Children's Cancer and Leukaemia Group](#)
- [Community Health Partnership \(Scotland\)](#)
- [Community Safety Partnership](#)
- [Data Coordination Board](#)
- [Department for Education](#)
- [Department for Work and Pensions](#)
- [Department for Work and Pensions Overseas Healthcare Team](#)
- [Department of Health](#)
- [European Renal Association](#)
- [Faculty of General Dental Practice \(UK\)](#)
- [GS+](#)
- [Health and Wellbeing Board](#)
- [Health Education England](#)
- [Health Research Authority](#)
- [Healthcare Quality Improvement Partnership](#)
- [Healthwatch England](#)
- [Human Tissue Authority](#)
- [Improving Access to Psychological Therapies Programme](#)
- [International Commission on Radiation Units and Measurements](#)
- [International Federation of Gynecology and Obstetrics](#)
- [International Health Terminology Standards Development Organisation](#)
- [International Society of Paediatric Oncology](#)
- [Local Health Board \(Wales\)](#)
- [Local Healthwatch](#)
- [Medicines and Healthcare Products Regulatory Agency](#)
- [National Cancer Registration and Analysis Service](#)
- [National Casemix Office](#)
- [National Contact Point](#)
- [National Commissioning Group](#)
- [National Information Board](#)
- [National Institute for Health and Care Excellence](#)
- [National Joint Registry](#)
- [National Kidney Federation](#)
- [National Specialised Commissioning Group](#)
- [Neonatal Data Analysis Unit](#)
- [NHS Business Services Authority](#)
- [NHS Dental Services](#)
- [NHS Digital](#)
- [NHS England](#)
- [NHS Improvement](#)
- [NHS Prescription Services](#)
- [NHS Wales Informatics Service](#)
- [Northern Ireland Local Commissioning Group](#)
- [Office for National Statistics](#)
- [Ofsted](#)
- [Public Health England](#)
- [Royal College of Emergency Medicine](#)
- [Royal College of General Practitioners](#)
- [Royal College of Psychiatrists](#)
- [Royal College of Pathologists](#)
- [Royal Pharmaceutical Society](#)
- [Sustainable Development Unit](#)
- [The Renal Association](#)
- [The Royal Marsden](#)
- [UK National Screening Committee](#)
- [UK Renal Registry](#)
- [UK Terminology Centre](#)
- [Union for International Cancer Control](#)
- [United Kingdom and Ireland Association of Cancer Registries](#)
- [World Health Organisation](#)
- **Referenced Organisations:**
 - [American Joint Committee on Cancer](#)
 - [British Association for Paediatric Nephrology](#)
 - [British HIV Association](#)
 - [British Psychological Society](#)
 - [British Renal Society](#)
 - [British Transplantation Society](#)
 - [Burden Advice and Assessment Service](#)
 - [Care Quality Commission](#)
 - [Children's Cancer and Leukaemia Group](#)
 - [Community Health Partnership \(Scotland\)](#)
 - [Community Safety Partnership](#)

- [Data Coordination Board](#)
- [Department for Education](#)
- [Department for Work and Pensions](#)
- [Department for Work and Pensions Overseas Healthcare Team](#)
- [Department of Health](#)
- [European Renal Association](#)
- [Faculty of General Dental Practice \(UK\)](#)
- [GS1](#)
- [Health and Wellbeing Board](#)
- [Health Education England](#)
- [Health Research Authority](#)
- [Healthcare Quality Improvement Partnership](#)
- [Healthwatch England](#)
- [Human Tissue Authority](#)
- [Improving Access to Psychological Therapies Programme](#)
- [International Commission on Radiation Units and Measurements](#)
- [International Federation of Gynecology and Obstetrics](#)
- [International Health Terminology Standards Development Organisation](#)
- [International Society of Paediatric Oncology](#)
- [Local Health Board \(Wales\)](#)
- [Local Healthwatch](#)
- [Medicines and Healthcare Products Regulatory Agency](#)
- [National Cancer Registration and Analysis Service](#)
- [National Casemix Office](#)
- [National Centre for Smoking Cessation and Training](#)
- [National Contact Point](#)
- [National Commissioning Group](#)
- [National Information Board](#)
- [National Institute for Health and Care Excellence](#)
- [National Joint Registry](#)
- [National Kidney Federation](#)
- [National Specialised Commissioning Group](#)
- [Neonatal Data Analysis Unit](#)
- [NHS Business Services Authority](#)
- [NHS Dental Services](#)
- [NHS Digital](#)
- [NHS England](#)
- [NHS Improvement](#)
- [NHS Prescription Services](#)
- [NHS Wales Informatics Service](#)
- [Northern Ireland Local Commissioning Group](#)
- [Office for National Statistics](#)
- [Ofsted](#)
- [Public Health England](#)
- [Royal College of Emergency Medicine](#)
- [Royal College of General Practitioners](#)
- [Royal College of Psychiatrists](#)
- [Royal College of Pathologists](#)
- [Royal Pharmaceutical Society](#)
- [Sustainable Development Unit](#)
- [The Renal Association](#)
- [The Royal Marsden](#)
- [UK National Screening Committee](#)
- [UK Renal Registry](#)
- [UK Terminology Centre](#)
- [Union for International Cancer Control](#)
- [United Kingdom and Ireland Association of Cancer Registries](#)
- [World Health Organisation](#)

SMOKING QUIT DATE (RETIRED) renamed from **SMOKING QUIT DATE**

Change to Supporting Information: Changed Description, status to Retired, Name

[Smoking Quit Date](#) is an ~~ACTIVITY DATE TIME~~. This item has been retired from the NHS Data Model and Dictionary.

[Smoking Quit Date](#) is the date set by a [PERSON](#) on which they intend to stop smoking. The last live version of this item is available in the ~~??????~~ release of the NHS Data Model and Dictionary.

Access to this version can be obtained by emailing information.standards@nhs.net with "NHS Data Model and Dictionary - Archive Request" in the email subject line.

SMOKING QUIT DATE (RETIRED), renamed from SMOKING QUIT DATE

Change to Supporting Information: Changed Description, status to Retired, Name

- Changed Description
 - Retired Smoking Quit Date
 - Changed Name from Data_Dictionary.NHS_Business_Definitions.S.Smoking_Quit_Date to Retired.Data_Dictionary.NHS_Business_Definitions.S.Smoking_Quit_Date
-

STOP SMOKING SERVICE

Change to Supporting Information: Changed Description

A [Stop Smoking Service](#) is a [SERVICE](#).

A [Stop Smoking Service](#) is a [SERVICE](#) set up by a [Primary Care Trust](#) to help people give up smoking. A [Stop Smoking Service](#) is commissioned by a [Local Authority](#) to help people give up smoking.

For a [SERVICE](#) to be designated as an NHS [Stop Smoking Service](#) requires that minimum quality standards should be met. To meet these minimum quality standards all advisers should: Further information on the NHS Stop Smoking Services and the monitoring guidance can be found on the [National Centre for Smoking Cessation and Training website at Local Stop Smoking Services: Service and Delivery Guidance 2014](#).

- have received appropriate training for their role,
- carry out the 4 week follow up promptly, in accordance with the current guidance,
- complete the minimum dataset (the individual [PERSON](#) data monitoring forms) for each [PERSON](#), fully and accurately, and return the information required to the coordinator in good time,
- offer weekly support for at least the first four weeks of a quit attempt,
- attempt to confirm smoking status of all [PERSONS](#) self reporting as having quit at 4 week follow up by use of a carbon monoxide monitor, except where follow up is carried out by telephone.

The majority of [Stop Smoking Services](#) will operate broadly on the 'Maudsley' model of a clinic providing intensive support, usually on a group therapy basis, to the most dependent smokers. The [Stop Smoking Service](#) should also continue to be supplemented by a range of [SERVICES](#) in various settings in primary care, secondary care and the community.

Central monitoring of data regarding 52 week follow up is no longer required however, follow up at 52 week stage is still recommended as good practice to establish long term success rates and this information should still be collected locally.

For further information on [Stop Smoking Services](#), see the [Department of Health](#) part of the gov.uk website at [Stop Smoking Service: monitoring and guidance update](#).

STOP SMOKING SERVICE QUARTERLY DATA SET OVERVIEW

Change to Supporting Information: Changed Dataset, Description

~~This return is out of date therefore the information should not be used.~~

~~For the latest version of the guidance, please see the [Department of Health](#) part of the gov.uk website at: [Stop Smoking Service: monitoring and guidance update](#). The [Stop Smoking Services Quarterly Data Set](#) is used to monitor and evaluate the effectiveness and coverage of [Stop Smoking Services](#). It is designed to provide consistent information on people who have sought and received quitting help from an evidence-based service.~~

- ~~• Smoking is one of the most significant contributing factors to life expectancy, health inequalities and ill health, particularly cancer and coronary heart disease.~~
- ~~• The [Department of Health](#) requires information on services provided by NHS [Health Care Providers](#).~~
- ~~• The [Stop Smoking Services Quarterly Data Set](#) provides essential information used to monitor the process of achieving the NHS targets to increase life expectancy at birth in England and to monitor the performance of [Stop Smoking Services](#).~~

~~Collection and Submission~~

- ~~• This return relates to [ACTIVITY](#) taking place over a 3 month period. The return is made quarterly and should be submitted by the thirty second working day after the end of the quarter to which it relates.~~
- ~~• This data should be submitted for each [Primary Care Trust](#).~~
- ~~• The data should be collected on responsible [Primary Care Trust](#) basis. The [Primary Care Trust](#)'s responsible population comprises:
 - ~~◦ all [PERSONS](#) registered with a [GP Practice](#) that forms part of the [Primary Care Trust](#), regardless of where the [PERSON](#) is resident, plus any [PERSONS](#) not registered with a [GP Practice](#) who are resident within the [Primary Care Trust](#)'s statutory geographical boundary.~~~~

- Note that [PERSONS](#) resident within the [Primary Care Trust](#)'s statutory geographical boundary, but registered with a [GP Practice](#) that forms part of another [Primary Care Trust](#), are the responsibility of that other [Primary Care Trust](#).
 - The only **exception** to the above rules is where [PERSONS](#) receive a [Stop Smoking Service](#) at or near their workplace, which may be some distance from their home. For example, a [Stop Smoking Service](#) might be provided for commuters at their workplace in a large city. In such circumstances it is likely that people will be drawn from a range of places in the surrounding area e.g. commuters to London who live all around the south-east of England. Where a [PERSON](#) is judged to meet these criteria, the [Primary Care Trust](#) providing the [Stop Smoking Service](#) should include these people in their returns.
- The information in this Central Return Data Set is transmitted at aggregate level to the [NHS Digital](#)'s web-based data collection systems at [NHS Stop Smoking Services](#). NHS providers enter their data directly.
 - Further information on the NHS [Stop Smoking Services](#) and the monitoring guidance can be found on the [Department of Health](#) part of the gov.uk website at [Stop Smoking Service: monitoring and guidance update](#).

Synopsis of Data Set Content

- The [Stop Smoking Services Quarterly Data Set](#) requires the [REPORTING PERIOD START DATE](#) and [REPORTING PERIOD END DATE](#) for the quarter to which it relates.
- The collection is for:
 - Part 1A – The number of [PERSONS](#) with a [Person Stop Smoking Episode](#) setting a [SMOKING QUIT DATE](#) and successfully quitting by [ETHNIC CATEGORY](#) and [PERSON GENDER](#). Pregnant women should be included but not separately identified.
 - Part 1B – The number of [PERSONS](#) setting a [SMOKING QUIT DATE](#) by [AGE BAND AT SMOKING QUIT DATE](#) and [PERSON GENDER](#) together with the outcome at 4 week follow-up. Pregnant women should be included but not separately identified.
 - Part 1C – The number of [PERSONS](#) with a [PREGNANCY STATUS](#) of 'Yes' at the time of the [SMOKING QUIT DATE](#) and the outcome at 4 week follow-up.
 - Part 1D – The number of [PERSONS](#) setting a [SMOKING QUIT DATE](#) and successful quitters with a [FREE PRESCRIPTIONS INDICATOR](#) of 'Entitled to free prescriptions'.
 - Part 1E – The number of [PERSONS](#) setting a [SMOKING QUIT DATE](#) and successful quitters by [SOCIO-ECONOMIC CLASSIFICATION](#)
 - Part 1F – The number of [PERSONS](#) setting a [SMOKING QUIT DATE](#) and successful quitters by [PHARMACOTHERAPY STOP SMOKING AID RECEIVED](#)
 - Part 1G – The number of [PERSONS](#) setting a [SMOKING QUIT DATE](#) and successful quitters by [INTERVENTION SESSION TYPE](#)
 - Part 1H – The number of [PERSONS](#) setting a [SMOKING QUIT DATE](#) and successful quitters by [INTERVENTION SETTING](#)
 - Part 2A – Financial Allocations for the year by type of allocation. (See [STOP SMOKING SERVICE PCT FINANCIAL ALLOCATION](#) and [STOP SMOKING SERVICE OTHER FINANCIAL ALLOCATION](#).)
Figures should be to the nearest pound.
 - Part 2B – Cumulative total spend on [Stop Smoking Services](#) in the year up to the [REPORTING PERIOD END DATE](#). (See [STOP SMOKING SERVICE CUMULATIVE TOTAL SPEND](#).)
Parts 2A and 2B should include all monies from whatever source which have been specifically allocated to, or spent on, [Stop Smoking Services](#) e.g. additional funding such as Neighbourhood Renewal Funding.
Figures should be to the nearest pound.

Collection and Submission

The [Stop Smoking Services Quarterly Data Set](#) is required by Public Health England and is collected from [Local Authorities](#).

The [Stop Smoking Services Quarterly Data Set](#) relates to [ACTIVITY](#) taking place over a 3 month period and should be submitted by the thirty second working day after the end of the quarter to which it relates.

The [Stop Smoking Services Quarterly Data Set](#) is transmitted at aggregate level to the [NHS Digital](#) Strategic Data Collection Service available at [NHS Stop Smoking Services](#).

Further guidance

Further information on the NHS [Stop Smoking Services](#) and the monitoring guidance can be found on the [National Centre for Smoking Cessation and Training](#) website at [Local Stop Smoking Services: Service and Delivery Guidance 2014](#).

ACTIVITY GROUP

Change to Class: Changed Attributes

Attributes of this Class are:

A and E INCIDENT LOCATION TYPE

A and E PATIENT GROUP

ACTIVITY GROUP TYPE
ADMISSION METHOD
ASSAULT METHOD
BABY FIRST FEED BREAST MILK STATUS
BREASTFEEDING STATUS
CANCER OR SYMPTOMATIC BREAST REFERRAL PATIENT STATUS
CANCER REFERRAL TO TREATMENT PERIOD START DATE
CANCER SCREENING STATUS
CANCER TREATMENT INTENT
CANCER TREATMENT PERIOD START DATE
CARE PROGRAMME APPROACH REVIEW ABUSE QUESTION ASKED INDICATOR
CARER RESIDENT INDICATION CODE FOR NATIONAL NEONATAL DATA SET
CHILDREN TEENAGERS AND YOUNG ADULTS AGE CATEGORY
COMMUNITY TREATMENT ORDER END REASON
COMPLEX SOCIAL FACTORS INDICATOR
DAUGHTER BORN AT THIS ENCOUNTER INDICATOR
DELIVERY PLACE CHANGE REASON
DISCHARGE DESTINATION
DISCHARGED TO HOSPITAL AT HOME SERVICE INDICATOR
DISCHARGE METHOD
EMERGENCY CARE ATTENDANCE CATEGORY
ESTIMATED DATE OF DELIVERY
ESTIMATED DATE OF DELIVERY METHOD
FEMALE GENITAL MUTILATION AGE CATEGORY
FIRST REGULAR DAY OR NIGHT ADMISSION
IMPROVING ACCESS TO PSYCHOLOGICAL THERAPIES CARE SPELL END CODE
IMPROVING ACCESS TO PSYCHOLOGICAL THERAPIES OPT IN DATE
IMPROVING ACCESS TO PSYCHOLOGICAL THERAPIES STEPPED CARE INTENSITY DELIVERED
IN LABOUR BEFORE CAESARIAN SECTION INDICATOR
INTENDED DELIVERY PLACE
INTRAVESICAL CHEMOTHERAPY RECEIVED INDICATOR
INTRAVESICAL IMMUNOTHERAPY RECEIVED INDICATOR
KEY WORKER SEEN INDICATOR
LENGTH OF STAY ADJUSTMENT
LENGTH OF STAY ADJUSTMENT REASON
MATERNAL CRITICAL INCIDENT TYPE
MECONIUM PRESENT IN LIQUOR INDICATOR
MENTAL HEALTH ABSOLUTE DISCHARGE RESPONSIBILITY
MENTAL HEALTH CONDITIONAL DISCHARGE END REASON
MENTAL HEALTH DELAYED DISCHARGE ATTRIBUTABLE TO INDICATION CODE
MENTAL HEALTH DELAYED DISCHARGE REASON
MONITORING INTENT
MOTHER ANTENATALLY BOOKED INDICATOR
NEONATAL CRITICAL INCIDENT TYPE
NEONATAL LEVEL OF CARE
NON SMOKING CONFIRMATION STATUS AT 4 WEEKS
ORGAN OR TISSUE UNSUITABLE ORGAN CODE RENAL TRANSPLANT
~~OUTCOME AT 4 WEEK FOLLOW UP~~
OUTCOME AT 4 WEEK FOLLOW UP FOR STOP SMOKING
PAEDIATRIC NEPHROLOGY REGISTRY STATUS CODE
PALLIATIVE CARE SPECIALIST SEEN INDICATOR
PALLIATIVE TREATMENT REASON CODE FOR UPPER GASTROINTESTINAL
PATIENT CLASSIFICATION
PATIENT RECEIVING ONE TO ONE NURSING CARE INDICATOR
PHARMACOTHERAPY STOP SMOKING AID RECEIVED
PREGNANCY OUTCOME CODE
PREGNANCY PREVIOUS CAESAREAN SECTIONS
PREGNANCY TOTAL LIVE BIRTHS
PREGNANCY TOTAL PREVIOUS LOSSES LESS THAN 24 WEEKS
PREGNANCY TOTAL PREVIOUS PREGNANCIES
PREGNANCY TOTAL STILL BIRTHS
PREVIOUS NEGATIVE HIV TEST INDICATOR

RADIOTHERAPY INTENT
RENAL DIALYSIS SCHEDULE TYPE
~~SMOKING QUIT DATE~~
SOURCE OF ADMISSION
TIME BETWEEN DELIVERY AND SPONTANEOUS RESPIRATION CODE
TREATMENT START DATE FOR CANCER

CLINICAL INTERVENTION

Change to Class: Changed Attributes

Attributes of this Class are:

ABDOMINAL XRAY PERFORMED REASON
ABDOMINAL XRAY PERFORMED TO INVESTIGATE ABDOMINAL SIGNS INDICATOR
ABLATIVE THERAPY TYPE
ACCIDENT AND EMERGENCY INVESTIGATION
ACCIDENT AND EMERGENCY TREATMENT
ADDITIONAL UNPLANNED PROCEDURE REQUIRED INDICATOR
ANAESTHESIA TYPE IN LABOUR AND DELIVERY
ANAESTHETIC METHOD TYPE FOR DIALYSIS ACCESS CONSTRUCTION
ANAESTHETIC TYPE FOR JOINT REPLACEMENT
ANTI CANCER REGIMEN NUMBER
ARTERIOVENOUS GRAFT MATERIAL TYPE
ARTHROPLASTY REVISION TYPE
ARTIFICIAL RUPTURE OF MEMBRANES REASON CODE
ASA PHYSICAL STATUS CLASSIFICATION SYSTEM CODE
ASSOCIATED PROCEDURE TYPE FOR ANKLE REPLACEMENT
BILIARY STENT INSERTION REASON
BIOLOGICAL RESURFACING TYPE FOR SHOULDER REPLACEMENT
BIOPSY TYPE FOR CENTRAL NERVOUS SYSTEM TUMOURS
BLOOD FLOW RATE
BLOOD TRANSFUSION PRODUCT TYPE
BLOOD TRANSFUSION TYPE
BLOOD TRANSFUSION UNITS TRANSFUSED
BONE GRAFT INDICATION CODE FOR REVISION ANKLE REPLACEMENT
BONE GRAFT INDICATOR FOR JOINT REPLACEMENT
BONE GRAFT TYPE FOR REVISION ANKLE REPLACEMENT
BRACHYTHERAPY TYPE
BREAST ASSESSMENT OUTCOME
BREAST SCREENING TEST OUTCOME
CANCER IMAGING MODALITY
CANCER TREATMENT MODALITY
CARDIOPULMONARY EXERCISE TEST TYPE
CHEMICAL THROMBOPROPHYLAXIS REGIME TYPE
CHEMO RADIATION INDICATOR
CHEMOTHERAPY ACTUAL DOSE
CHEST DRAIN IN SITU INDICATOR
CLINICAL INTERVENTION TYPE
CLINICAL INVESTIGATION NOT PERFORMED REASON CODE FOR MATERNITY
CO MORBIDITY ADJUSTMENT INDICATOR
COMPLICATION TYPE FOR RENAL DIALYSIS ACCESS
COMPONENT REMOVAL INDICATOR
CONTINUOUS INFUSION OF PULMONARY VASODILATOR RECEIVED INDICATOR
CONTINUOUS POSITIVE AIRWAY PRESSURE DELIVERY MODE
CONTRACEPTION METHOD STATUS
CYTOLOGY SCREENING ACTION TYPE
DEINFIBULATION UNDERTAKEN REASON
DELIVERED IN WATER INDICATOR
DELIVERY INSTRUMENT TYPE
DELIVERY OF PLACENTA METHOD
DIEPOXYBUTANE TEST RESULT
DRUG ADMINISTRATION DURATION
DRUG ADMINISTRATION STATUS

DRUG DAYS SUPPLY
DRUG DOSAGE AND ADMIN SPECIFICATION
DRUG IDENTIFICATION
DRUG INFORMATION COMMENT
DRUG INFORMATION TYPE
DRUG QUANTITY SUPPLIED
DRUG REGIMEN ACRONYM
DRUG TREATMENT INTENT
ENDOSCOPIC OR RADIOLOGICAL COMPLICATION TYPE
ENDOSCOPIC PROCEDURE TYPE
ENTERAL FEEDING METHOD
ENTERAL FEED TYPE GIVEN
EPISIOTOMY PERFORMED REASON CODE
EXCISION TYPE FOR CENTRAL NERVOUS SYSTEM TUMOURS
FETAL ORDER
FIRST DEFINITIVE TREATMENT PROVIDED
FIXATION TYPE FOR ELBOW OR SHOULDER REPLACEMENT
FORMULA MILK OR MILK FORTIFIER TYPE
FRACTION NUMBER
GERMLINE GENETIC TEST TYPE OFFERED
HIP SURGERY PATIENT POSITION
HUMAN PAPILLOMAVIRUS VACCINATION DOSE GIVEN
IMAGE GUIDED SURGERY INDICATOR
IMAGING ANATOMICAL SITE
IMAGING INTERVENTION INDICATOR
IMAGING MODALITY
IMAGING OR RADIODIAGNOSTIC EVENT INDICATION CODE FOR RENAL CARE
INFECTION CULTURE TEST INDICATOR
~~INTERVENTION SESSION TYPE~~
INTERVENTION SESSION TYPE FOR STOP SMOKING
INTERVENTION SETTING TYPE FOR STOP SMOKING
INTRAPARTUM ANTIBIOTICS GIVEN INDICATOR
JOINT REPLACEMENT REVISION REASON CODE FOR ANKLE
JOINT REPLACEMENT REVISION REASON CODE FOR ELBOW
JOINT REPLACEMENT REVISION REASON CODE FOR HIP
JOINT REPLACEMENT REVISION REASON CODE FOR KNEE
JOINT REPLACEMENT REVISION REASON CODE FOR SHOULDER
KIDNEY TRANSPLANTED CODE
LABOUR FIRST STAGE LENGTH
LABOUR OR DELIVERY ONSET METHOD
LABOUR SECOND STAGE LENGTH
LAPAROTOMY FOR NECROTISING ENTEROCOLITIS INDICATION CODE
LONG HEAD BICEPS TENOTOMY INDICATOR
MARGIN INVOLVED INDICATION CODE
MECHANICAL THROMBOPROPHYLAXIS REGIME TYPE
MINIMALLY INVASIVE SURGERY INDICATOR
MORE THAN THREE RECTAL WASHOUTS RECEIVED INDICATOR
NEOADJUVANT THERAPY INDICATOR
NEONATAL RESUSCITATION METHOD
NEONATAL RESUSCITATION METHOD FOR NATIONAL NEONATAL DATA SET
NEPHRECTOMY TYPE
NEURODEVELOPMENTAL ASSESSMENT ALREADY TAKEN INDICATOR
NEWBORN HEARING INCOMPLETE REASON CODE
NEWBORN HEARING SCREENING TEST TYPE
NITRIC OXIDE GIVEN INDICATOR
NUMBER OF TELETHERAPY FIELDS
OBSERVATION SCHEME IN USE
OPPORTUNISTIC SCREENING TYPE
PAIN RELIEF TYPE IN LABOUR AND DELIVERY
PARENTAL CONSENT TO ADMINISTER VITAMIN K INDICATOR
PARENTAL CONSENT TO POST MORTEM INDICATOR
PARENTERAL NUTRITION RECEIVED INDICATOR

PATHOLOGY INVESTIGATION PRIORITY
PATHOLOGY RESULT REPORTED DATE
PATIENT PROCEDURE PERFORMED INDICATOR
PATIENT PROCEDURE TYPE FOR PRIMARY ANKLE REPLACEMENT
PATIENT PROCEDURE TYPE FOR PRIMARY ELBOW REPLACEMENT
PATIENT PROCEDURE TYPE FOR PRIMARY HIP REPLACEMENT
PATIENT PROCEDURE TYPE FOR PRIMARY KNEE REPLACEMENT
PATIENT PROCEDURE TYPE FOR PRIMARY SHOULDER REPLACEMENT
PATIENT PROCEDURE TYPE FOR REVISION ANKLE REPLACEMENT
PATIENT PROCEDURE TYPE FOR REVISION ELBOW REPLACEMENT
PATIENT PROCEDURE TYPE FOR REVISION HIP REPLACEMENT
PATIENT PROCEDURE TYPE FOR REVISION KNEE REPLACEMENT
PATIENT PROCEDURE TYPE FOR REVISION SHOULDER REPLACEMENT
PATIENT SPECIFIC INSTRUMENTS INDICATOR FOR KNEE REPLACEMENT
PATIENT TREATED TO CHILDRENS CANCER AND LEUKAEMIA GROUP GUIDELINES INDICATOR
PERITONEAL DIALYSIS CATHETER INSERTION TECHNIQUE
PERITONEAL DIALYSIS CATHETER TYPE
PERITONEAL DIALYSIS TREATMENT REGIME
PLANE OF SURGICAL EXCISION TYPE
PLANNED TREATMENT CHANGE REASON
POST MORTEM CARRIED OUT INDICATOR
POST MORTEM CONFIRMED NECROTISING ENTEROCOLITIS DIAGNOSIS INDICATOR
POST MORTEM TYPE
PREVIOUS BONY INFECTION INDICATOR OF TIBIA OR HINDFOOT
PREVIOUS FRACTURE INDICATOR FOR ANKLE REPLACEMENT
PREVIOUS SURGERY TYPE FOR ANKLE JOINT
PREVIOUS SURGERY TYPE FOR SHOULDER REPLACEMENT
PRIMARY INDUCTION CHEMOTHERAPY FAILURE INDICATOR
PRINCIPAL DIAGNOSTIC IMAGING TYPE
PROCEDURE RENAL DIALYSIS ACCESS REPAIR OR REVISION TYPE
PROCEDURE SCHEME IN USE
PROCEDURE SIDE RENAL DIALYSIS ACCESS CONSTRUCTION CODE
PROCEDURE SITE RENAL DIALYSIS ACCESS CONSTRUCTION CODE
RADIOISOTOPE
RADIOLOGICAL PROCEDURE TYPE
RADIOTHERAPY ACTUAL DOSE
RADIOTHERAPY BEAM TYPE
RADIOTHERAPY PRESCRIBED DOSE
RADIOTHERAPY TREATMENT MODALITY
REGIONAL ANAESTHETIC TECHNIQUE FOR CANCER
RELAPSE METHOD DETECTION TYPE
REMOVAL REASON TYPE FOR DIALYSIS ACCESS
RENAL DIALYSIS ACCESS TYPE
RENAL TRANSPLANT FAILURE CAUSE CODE
RENAL TREATMENT MODALITY CHANGE REASON CODE
RENAL TREATMENT MODALITY CODE
RENAL TREATMENT PRIMARY SUPERVISION CODE
REPROGLE TUBE IN SITU INDICATOR
RESPIRATORY SUPPORT DEVICE TYPE FOR NATIONAL NEONATAL DATA SET
RESPIRATORY SUPPORT MODE FOR NATIONAL NEONATAL DATA SET
RESTRICTIVE INTERVENTION TYPE
RESULT SENT DIRECT
RETINOPATHY OF PREMATURITY SCREENING OUTCOME STATUS CODE
REVISION PROCEDURE TYPE FOR ANKLE OR KNEE REPLACEMENT
REVISION PROCEDURE TYPE FOR ELBOW OR SHOULDER REPLACEMENT
REVISION PROCEDURE TYPE FOR HIP REPLACEMENT
ROTATOR CUFF CONDITION
RUPTURE OF MEMBRANES METHOD
SARCOMA SURGICAL MARGIN
SENTINEL LYMPH NODE BIOPSY TYPE
SIGNIFICANT MATERNAL PYREXIA IN LABOUR INDICATOR
STEM CELL INFUSION DONOR TYPE

STEM CELL INFUSION SOURCE CODE
STEM CELL TRANSPLANT CONDITIONING REGIMEN
STENT DEPLOYED SUCCESS INDICATOR
STEROIDS GIVEN DURING PREGNANCY TO MATURE FETAL LUNGS INDICATOR
STOMA PRESENT INDICATOR
SURFACTANT GIVEN INDICATOR
SURGICAL ACCESS TYPE
SURGICAL APPROACH FOR PRIMARY HIP REPLACEMENT
SURGICAL APPROACH FOR PRIMARY KNEE REPLACEMENT
SURGICAL APPROACH FOR PRIMARY OR REVISION ANKLE REPLACEMENT
SURGICAL APPROACH FOR PRIMARY OR REVISION ELBOW REPLACEMENT
SURGICAL APPROACH FOR PRIMARY OR REVISION SHOULDER REPLACEMENT
SURGICAL APPROACH FOR REVISION HIP REPLACEMENT
SURGICAL APPROACH FOR REVISION KNEE REPLACEMENT
SURGICAL COMPLICATION TYPE
SURGICAL PALLIATION TYPE
SYSTEMIC ANTI CANCER THERAPY DRUG ROUTE OF ADMINISTRATION
SYSTEMIC ANTI CANCER THERAPY PROGRAMME NUMBER
SYSTEMIC ANTI CANCER THERAPY REGIMEN MODIFICATION INDICATOR
TRACHEOSTOMY TUBE IN SITU INDICATOR
TREATMENT TYPE FOR NECROTISING ENTEROCOLITIS
TREATMENT TYPE FOR PATENT DUCTUS ARTERIOSUS
UNTOWARD INTRAOPERATIVE EVENT CODE FOR ANKLE REPLACEMENT
UNTOWARD INTRAOPERATIVE EVENT CODE FOR ELBOW REPLACEMENT
UNTOWARD INTRAOPERATIVE EVENT CODE FOR HIP REPLACEMENT
UNTOWARD INTRAOPERATIVE EVENT CODE FOR KNEE REPLACEMENT
UNTOWARD INTRAOPERATIVE EVENT CODE FOR SHOULDER REPLACEMENT
VASCULAR LINE TYPE IN SITU
VISUAL INSPECTION CONFIRMED NECROTISING ENTEROCOLITIS DURING LAPAROTOMY INDICATOR
VITAMIN K ADMINISTERED INDICATOR
VITAMIN K ROUTE OF ADMINISTRATION

CURRENCY (RETIRED), renamed from CURRENCY

Change to Class: Changed Relationships, Description, status to Retired, Name

~~A currency.~~ **This item has been retired from the NHS Data Model and Dictionary.**

The last live version of this item is available in the ?????? release of the NHS Data Model and Dictionary.

Access to this version can be obtained by emailing information.standards@nhs.net with "NHS Data Model and Dictionary - Archive Request" in the email subject line.

CURRENCY (RETIRED), renamed from CURRENCY

Change to Class: Changed Relationships, Description, status to Retired, Name

~~Each CURRENCY~~

~~K may be used for one or more SERVICE FINANCIAL ALLOCATION~~

CURRENCY (RETIRED), renamed from CURRENCY

Change to Class: Changed Relationships, Description, status to Retired, Name

- Changed Relationships
- Changed Description
- Retired CURRENCY
- Changed Name from Data_Dictionary.Classes.C.CURRENCY to Retired.Data_Dictionary.Classes.C.CURRENCY

REPORTING PERIOD

Change to Class: Changed Attributes

Attributes of this Class are:

K REPORTING PERIOD END DATE
K REPORTING PERIOD START DATE
REPORTING PERIOD QUARTER END DATE
REPORTING PERIOD QUARTER START DATE

SERVICE FINANCIAL ALLOCATION

Change to Class: Changed Attributes

Attributes of this Class are:

K FINANCIAL ALLOCATION OR SPEND TYPE
FINANCIAL ALLOCATION OR SPEND TYPE FOR STOP SMOKING
FINANCIAL AMOUNT
FINANCIAL MONTH
FINANCIAL YEAR
NATIONAL TARIFF INDICATOR

SOCIO-ECONOMIC CLASSIFICATION

Change to Class: Changed Description, Attributes

A categorisation of a [PERSON](#)'s socio-economic group.

Further guidance on coding can be found at the [Office for National Statistics - The National Statistics Socio-economic Classification \(NS-SEC\)](#). A categorisation of a [PERSON](#)'s socio-economic group.

SOCIO-ECONOMIC CLASSIFICATION

Change to Class: Changed Description, Attributes

Attributes of this Class are:

SOCIO-ECONOMIC CLASSIFICATION CODE
SOCIO ECONOMIC CLASSIFICATION CODE FOR STOP SMOKING

ACTIVITY DATE AND TIME TYPE

Change to Attribute: Changed Description

The type of [DATE AND TIME](#) that defines the usage with regard to the [ACTIVITY](#).

An [ACTIVITY](#) may have many [DATES AND TIMES](#) associated with it but may only have one [DATE AND TIME](#) of a particular type.

National Codes:

300 [Maternal Critical Incident Date and Time](#)
301 [Procedure Date and Time](#)
302 [Baby First Feed Date and Time](#)
303 [Date and Time of Decision to Deliver](#)
304 [Discharge Date and Time \(Hospital Provider Spell Postpartum\)](#)
305 [Oxytocin Administered Date and Time](#)
306 [Rupture of Membranes Date and Time](#)
307 [Transfer Start Date and Time \(Neonatal Unit\)](#)
308 Urgent Care Service Accessed Date and Time (Retired 01 September 2015)
309 [Clinical Intervention Date and Time](#)
310 [Critical Care Period Start Date and Time](#)
311 [Parents Seen By Senior Staff Member Date and Time](#)
312 [Critical Care Period Discharge Date and Time](#)
313 [Arrival Date and Time at Accident and Emergency Department](#)
314 [Assault Date and Time](#)

Note: This list is not in alphabetical order.

ACTIVITY DATE TYPE

Change to Attribute: Changed Description

The type of date that defines the usage with regard to the [ACTIVITY](#).

An [ACTIVITY](#) may have many dates associated with it but may only have one date of a particular type.

National Codes:

001	Angiogram Date (Retired July 2012)
002	Arrival Date At Accident and Emergency Department
003	Breast Assessment Date (Retired 1 January 2013)
004	Cancer Dental Assessment Date
005	Colorectal or Stoma Nurse Seen Date (Retired 1 January 2013)
006	Coronary Angiography Date (Retired July 2012)
007	Care Programme Approach Review Date
008	Date Biopsy Taken (Retired 01 April 2014)
009	Discharge Date
010	Discharge Ready Date
011	End Date
012	Event Date (Retired July 2012)
013	Expected Delivery Date (Retired September 2012)
014	First Antenatal Assessment Date
015	Full Postnatal Examination Date (Retired September 2012)
016	Initial Patient Contact Date (Retired July 2012)
017	Investigation Transfer Date (Retired July 2012)
018	Intrauterine Device Application Date (Retired September 2012)
019	Intrauterine Device Fitted Date (Retired September 2012)
020	Last Dosage Date
021	Mental Health Care Assessment Date (Retired September 2012)
022	Miscarriage Date (Retired September 2012)
023	Pathology Result Due Date
024	Patient Informed Biopsy Result Date
025	Patient Informed Of Outcome Date (Retired September 2012)
026	Smoking Quit Date
026	Smoking Quit Date (Retired XXXX)
027	Review Planned Date (Retired 01 April 2014)
028	Screening Result Date (Retired 01 April 2014)
029	Screening Result Sent Date
030	Specialist Palliative Care Date (Retired 01 April 2014)
031	Start Date
032	Cancer Symptoms First Noted Date
033	Attendance Date
034	Clinical Intervention Date
035	Immunisation Completion Date (Retired 01 September 2015)
036	Clinical Status Assessment Date
037	Dose Given Date (Retired September 2012)
038	Test Date (Retired September 2012)
039	Contact Date
040	Appointment Date
041	Primary Procedure Date
042	Second Operation Date (Retired 01 April 2014)
043	Speech and Language Assessment Date
044	Third Operation Date (Retired 01 April 2014)
045	Date First Seen
046	Statutory Assessment Date (Retired 01 January 2016)
047	Screening Test Date
048	Genitourinary Care Contact Date (Retired January 2014)
049	Consultant Upgrade Date
101	Referral Closure Date (Community Care) (Retired 01 September 2015)
102	Discharge Letter Issued Date (Community Care) (Retired 01 September 2015)
103	Systemic Anti-Cancer Therapy Administration Date
104	Procedure Date
105	Immunisation Date
106	Antenatal Appointment Date

107 [Antenatal Booking Appointment Date](#)
108 [Pregnancy First Contact Date](#)
109 [Screening Test Information Given Date](#)
110 [Assessment Date For Transplant Suitability](#)
111 [Accident and Emergency Initial Assessment Date](#)
112 [Accident and Emergency Date Seen For Treatment](#)
113 [Accident and Emergency Attendance Conclusion Date](#)
114 [Accident and Emergency Departure Date](#)
115 [Clinical Assessment Date](#)
116 [Imaging or Radiodiagnostic Event Date](#)
117 [Neonatal Critical Care Daily Care Date](#)
118 [Two Year Neonatal Outcomes Assessment Date](#)
119 [Date of Pregnancy Outcome \(Current Fetus\)](#)
120 [Neonatal Critical Incident Date](#)
121 [American Joint Committee on Cancer Stage Date](#)
122 [Ann Arbor Stage Date](#)
123 [Barcelona Clinic Liver Cancer Stage Date](#)
124 [Binet Stage Date](#)
125 [Chang Staging System Stage Date](#)
126 [Clinical Stage Date \(Pancreatic Cancer\)](#)
127 [Final Figo Stage Date](#)
128 [Holistic Needs Assessment Completed Date](#)
129 [Intergroup Rhabdomyosarcoma Study Post Surgical Group Date](#)
130 International Neuroblastoma Staging System Date (Retired 01 April 2017)
131 [Myeloma International Staging System Stage Date](#)
132 [Modified Dukes Stage Date](#)
133 [Multidisciplinary Team Discussion Date \(Cancer\)](#)
134 [Multidisciplinary Team Meeting Date \(Cancer\)](#)
135 [Murphy St Jude Stage Date](#)
136 Rai Stage Date (Retired 01 April 2017)
137 [Retinoblastoma Assessment Date](#)
138 [TNM Stage Grouping Date \(Final Pretreatment\)](#)
139 [TNM Stage Grouping Date \(Integrated\)](#)
140 [Wilms Tumour Stage Date](#)
141 [Care Contact Cancellation Date](#)
142 [Care Contact Date](#)
143 [Child Protection Plan End Date](#)
144 [Child Protection Plan Start Date](#)
145 [Discharge Letter Issued Date \(Mental Health and Community Care\)](#)
146 [Health Visitor First Antenatal Visit Date](#)
147 [Infant Physical Examination Date](#)
148 [Onward Referral Date](#)
149 [Referral Closure Date](#)
150 [Referral Rejection Date](#)
151 [Replacement Appointment Booked Date](#)
152 [Replacement Appointment Date Offered](#)
153 [Service Discharge Date](#)
154 [Date of Restrictive Intervention](#)
155 [Indirect Activity Date](#)
156 Mental Health Crisis Plan Creation Date (Retired 01 April 2017)
157 Mental Health Crisis Plan Last Updated Date (Retired 01 April 2017)
158 [Care Plan Agreed Date](#)
159 [Care Plan Creation Date](#)
160 [Care Plan Implementation Date](#)
161 [Care Plan Last Updated Date](#)
162 [Five Forensic Pathways Assessment Date](#)
163 [International Neuroblastoma Risk Group Staging System Stage Date](#)
164 [Stage Grouping Date \(Testicular Cancer\)](#)
165 [Emergency Care Arrival Date](#)
166 [Emergency Care Initial Assessment Date](#)
167 [Emergency Care Date Seen For Treatment](#)
168 [Emergency Care Attendance Conclusion Date](#)
169 [Emergency Care Departure Date](#)
170 [Injury Date](#)
171 [Referred To Service Assessment Date](#)

Intended Smoking Quit Date

Note: This list is not in alphabetical order.

ETHNIC CATEGORY CODE

Change to Attribute: Changed Dataset

The ethnicity of a [PERSON](#), as specified by the [PERSON](#).

Note: [ETHNIC CATEGORY](#) is the classification used for the 2001 census.

The [Office for National Statistics](#) has developed a further breakdown of the group from that given, which may be used locally.

National Codes:

White

- A British
- B Irish
- C Any other White background

Mixed

- D White and Black Caribbean
- E White and Black African
- F White and Asian
- G Any other mixed background

Asian or Asian British

- H Indian
- J Pakistani
- K Bangladeshi
- L Any other Asian background

Black or Black British

- M Caribbean
- N African
- P Any other Black background

Other Ethnic Groups

- R Chinese
- S Any other ethnic group

- Z Not stated

National code Z - Not Stated should be used where the [PERSON](#) has been given the opportunity to state their [ETHNIC CATEGORY](#) but chose not to.

FINANCIAL ALLOCATION OR SPEND TYPE (RETIRED), renamed from FINANCIAL ALLOCATION OR SPEND TYPE

Change to Attribute: Changed Description, status to Retired, Name

The type of financial allocation to or spend by a [Primary Care Trust](#) of funds for a [SERVICE](#) during a [REPORTING PERIOD](#).

This should include all monies from whatever source which have been specifically allocated to, or spent on, the [SERVICE](#) e.g. additional funding such as Neighbourhood Renewal Funding. **This item has been retired from the NHS Data Model and Dictionary.**

***National Codes:* The last live version of this item is available in the ?????? release of the NHS Data Model and Dictionary.**

- 01 Financial allocation to [Primary Care Trusts](#) for the [REPORTING PERIOD](#)
- 02 Other financial allocation including any underspend carried over from a previous [REPORTING PERIOD](#)
- 03 Cumulative total spend for the financial year to date

Access to this version can be obtained by emailing information.standards@nhs.net with "NHS Data Model and Dictionary - Archive Request" in the email subject line.

FINANCIAL ALLOCATION OR SPEND TYPE (RETIRED), renamed from **FINANCIAL ALLOCATION OR SPEND TYPE**

Change to Attribute: Changed Description, status to Retired, Name

- Changed Description
- Retired FINANCIAL ALLOCATION OR SPEND TYPE
- Changed Name from Data_Dictionary.Attributes.F.FINANCIAL_ALLOCATION_OR_SPEND_TYPE to Retired.Data_Dictionary.Attributes.F.FINANCIAL_ALLOCATION_OR_SPEND_TYPE

FINANCIAL ALLOCATION OR SPEND TYPE FOR STOP SMOKING

Change to Attribute: New Attribute

The type of financial allocation to, or spend by, a Local Authority for a Stop Smoking Service during a REPORTING PERIOD.

National Codes:

- 01 Total financial allocation for the financial year (excluding pharmacotherapies)
- 02 Cumulative spend for the financial year (excluding pharmacotherapies)
- 03 Total cost of pharmacotherapies for the financial year
- 04 Other financial allocation including any underspend carried over from the previous financial year

This attribute is also known by these names:

Context	Alias
plural	FINANCIAL ALLOCATION OR SPEND TYPES FOR STOP SMOKING

FINANCIAL AMOUNT

Change to Attribute: Changed Dataset
An amount of money.

FREE PRESCRIPTIONS INDICATOR

Change to Attribute: Changed Description

An indication of whether a PERSON is eligible for free prescriptions.

~~Someone is entitled for free prescriptions if they:~~ An indication of whether a PERSON is eligible for free PRESCRIPTIONS.

- ~~• are under 16~~
- ~~• are under 19 and in full-time education~~
- ~~• are aged 60 or over~~
- ~~• get Income Support, Income-based Jobseeker's Allowance or Pension Credit Guarantee Credit~~
- ~~• have an NHS tax credit exemption certificate~~
- ~~• have a prescription exemption certificate (pregnant or have had a child in the past year or have a qualifying medical condition)~~
- ~~• are on a low income and have an HC2 certificate~~
- ~~• are a war pensioner if treatment is connected with the pensionable disability~~

The criteria for free PRESCRIPTIONS can be found on the NHS Business Services Authority website at NHS help with health costs.

National Codes:

- 01 Eligible for free prescriptions
- 02 Not eligible
- 01 Eligible for free PRESCRIPTIONS (Retired XXXX)
- 02 Not eligible (Retired XXXX)
- Y Yes - PERSON is eligible for free PRESCRIPTIONS
- N No - PERSON is not eligible for free PRESCRIPTIONS

FREE PRESCRIPTIONS INDICATOR

Change to Attribute: Changed Description

- Changed Description

INTERVENTION SESSION TYPE (RETIRED), renamed from INTERVENTION SESSION TYPE

Change to Attribute: Changed Dataset, Description, status to Retired, Name

The type of session in which a [CLINICAL INTERVENTION](#) is provided. **This item has been retired from the NHS Data Model and Dictionary.**

National Codes: **The last live version of this item is available in the ?????? release of the NHS Data Model and Dictionary.**

- 01 Closed group (structured, multi-session group course with pre-arranged start and finish dates and a pre-booked client group)
- 02 Open group (sometimes called a 'rolling group', which has fluctuating membership and is ongoing)
- 03 Drop-in clinic (multi-session support)
- 04 One to one support (structured, multi-session support)
- 05 Couple/family (structured, multi-session support for small family groups or couples)
- 06 Telephone support (structured, multi-session support via telephone)
- 96 Other

Access to this version can be obtained by emailing information.standards@nhs.net with "NHS Data Model and Dictionary - Archive Request" in the email subject line.

INTERVENTION SESSION TYPE (RETIRED), renamed from INTERVENTION SESSION TYPE

Change to Attribute: Changed Dataset, Description, status to Retired, Name

- null
- Changed Description
- Retired INTERVENTION SESSION TYPE
- Changed Name from Data_Dictionary.Attributes.I.Int.INTERVENTION_SESSION_TYPE to Retired.Data_Dictionary.Attributes.I.INTERVENTION_SESSION_TYPE

INTERVENTION SESSION TYPE FOR STOP SMOKING

Change to Attribute: New Attribute

The type of [SESSION](#) in which a [CLINICAL INTERVENTION](#) is provided for a [Stop Smoking Service](#).

National Codes:

- 01 Closed group (structured, multi-session group course with pre-arranged start and finish dates and a pre-booked client group)
- 02 Open group (sometimes called a 'rolling group', which has fluctuating membership and is ongoing)
- 03 Drop-in clinic (multi-session support)
- 04 One-to-one support (structured, multi-session support)
- 05 Family/Couple (structured, multi-session support for small family groups or couples)
- 06 Telephone support (structured, multi-session support via telephone)
- 96 Other (not listed)

This attribute is also known by these names:

Context	Alias
plural	INTERVENTION SESSION TYPES FOR STOP SMOKING

INTERVENTION SESSION TYPE FOR STOP SMOKING

Change to Attribute: New Attribute

INTERVENTION SESSION TYPE FOR STOP SMOKING

Data Elements:

INTERVENTION SESSION TYPE (STOP SMOKING)
--

INTERVENTION SETTING (RETIRED), renamed from INTERVENTION SETTING

Change to Attribute: Changed Dataset, Description, status to Retired, Name

The type of setting in which a [CLINICAL INTERVENTION](#) was delivered. **This item has been retired from the NHS Data Model and Dictionary.**

National Codes: The last live version of this item is available in the ?????? release of the NHS Data Model and Dictionary.

- 01 Service venue
- 02 Pharmacy setting
- 03 Prison setting
- 04 Primary care setting
- 05 Hospital ward setting
- 06 Dental Practice setting
- 07 Military base setting
- 08 Other

Access to this version can be obtained by emailing information.standards@nhs.net with "NHS Data Model and Dictionary - Archive Request" in the email subject line.

INTERVENTION SETTING (RETIRED), renamed from INTERVENTION SETTING

Change to Attribute: Changed Dataset, Description, status to Retired, Name

- null
- Changed Description
- Retired INTERVENTION SETTING
- Changed Name from Data_Dictionary.Attributes.I.Int.INTERVENTION_SETTING to Retired.Data_Dictionary.Attributes.I.INTERVENTION_SETTING

INTERVENTION SETTING TYPE FOR STOP SMOKING

Change to Attribute: New Attribute

The type of setting in which a CLINICAL INTERVENTION was delivered for a Stop Smoking Service.

National Codes:

- 01 Service venue (Retired XXX)
- 02 Pharmacy setting (Retired XXX)
- 03 Prison setting (Retired XXX)
- 04 Primary care setting (Retired XXX)
- 05 Hospital ward setting (Retired XXX)
- 06 Dental Practice setting (Retired XXX)
- 07 Military base setting (Retired XXX)
- 10 Community setting
- 11 Community Psychiatric setting
- 12 Psychiatric Hospital setting
- 13 Pharmacy setting
- 14 General Dental Practitioner Practice setting
- 15 General Medical Practitioner Practice setting
- 16 Maternity setting
- 17 Children's Centre setting
- 18 School setting
- 19 Prison setting
- 20 Military Base setting
- 21 Workplace setting
- 96 Other (Retired XXX)
- 98 Other (not listed)

This attribute is also known by these names:

Context	Alias
plural	INTERVENTION SETTING TYPES FOR STOP SMOKING

INTERVENTION SETTING TYPE FOR STOP SMOKING

Change to Attribute: New Attribute

INTERVENTION SETTING TYPE FOR STOP SMOKING

Data Elements:

INTERVENTION SETTING TYPE (STOP SMOKING)

NON SMOKING CONFIRMATION STATUS INDICATOR AT 4 WEEKS renamed from NON SMOKING CONFIRMATION STATUS AT 4 WEEKS

Change to Attribute: Changed Description, Name

An indicator of whether non-smoking status confirmation has been confirmed by carbon monoxide validation, attempted but not confirmed or confirmation was not attempted at the 4 week follow-up after the [SMOKING-QUIT-DATE](#).

A machine called a carbon monoxide monitor or Smokelyser is used to detect the amount of carbon monoxide in the breath and therefore to detect whether someone is still smoking. For the purposes of carbon monoxide validation, any carbon monoxide reading of less than 10 parts per million should be taken as an indication that the [PERSON](#) is not smoking at the time. An indication of whether a non-smoking status confirmation has been confirmed by carbon monoxide validation, at the 4 week follow-up.

National Codes:

- 4 Non-smoking status confirmed by carbon monoxide validation
- 2 Not confirmed – attempt has been made to contact the [PERSON](#) for carbon monoxide validation or carbon monoxide validation done but non-smoking status not confirmed. An 'attempt' should comprise a minimum of three separate attempts to contact the [PERSON](#) via telephone, text or email in order to arrange a face-to-face carbon monoxide validation.
- 8 Not Applicable (e.g. [PERSON](#) self reports as smoker at 4 weeks, confirmation not attempted as telephone service only or they are 'lost to follow-up')
- Y Yes - non-smoking status confirmed by carbon monoxide validation
- N No - non-smoking status not confirmed - attempt has been made to contact the [PERSON](#) for carbon monoxide validation or carbon monoxide validation done but non-smoking status not confirmed.
- X Not Applicable (e.g. [PERSON](#) self reports as smoker at 4 weeks, confirmation not attempted as telephone service only or they are 'lost to follow-up')

NON SMOKING CONFIRMATION STATUS INDICATOR AT 4 WEEKS renamed from NON SMOKING CONFIRMATION STATUS AT 4 WEEKS

Change to Attribute: Changed Description, Name

- Changed Description
- Changed Name from Data_Dictionary.Attributes.N.No.NON_SMOKING_CONFIRMATION_STATUS_AT_4_WEEKS to Data_Dictionary.Attributes.N.No.NON_SMOKING_CONFIRMATION_STATUS_INDICATOR_AT_4_WEEKS

ORGANISATION CODE

Change to Attribute: Changed Dataset

[ORGANISATION CODE](#) will be replaced with [ORGANISATION IDENTIFIER](#), which is the most recent approved national information standard to describe the required definition.

An [ORGANISATION CODE](#) is a code which identifies an [Organisation](#) uniquely.

[ORGANISATION CODES](#) are managed by:

- [Organisation Data Service \(ODS\)](#)
- [NHS Prescription Services](#)
- [NHS Dental Services](#).

Notes:

- [Organisation Data Service](#) codes can be downloaded from [Technology Reference Data Update Distribution \(TRUD\)](#)
- [Organisation Data Service](#) contact details can be found at [Contact Details](#).

ORGANISATION CODING FRAMES

- All NHS [Organisations](#) are coded using coding frames, as shown in the tables below:

Character Position	1	2	3	4	5	6	7	8
Format	a/n	a/n	a/n	a/n	a/n	a/n	a/n	a/n

A Frame	Organisation Type Identifier	Organisation Identifier					
B Frame	Organisation Type Identifier		Organisation Identifier				
C Frame	Organisation Type Identifier	Organisation Identifier					
D Frame	Organisation Type Identifier	Organisation Identifier					
E Frame	Organisation Identifier						
F Frame	Organisation Type Identifier	Organisation Identifier					
G Frame	Organisation Type Identifier	Practice Identifier					
H Frame	Organisation Type Identifier	Organisation Identifier					
I Frame	Organisation Type Identifier	Organisation Identifier					
K Frame	Organisation Identifier						
L Frame	Organisation Type Identifier		Organisation Identifier	Organisation Type Identifier			
M Frame	Organisation and Organisation Type Identifier						
N Frame	Organisation Type Identifier		Organisation Identifier				

A Frame:

Example

Non NHS Organisation ([Independent Provider](#)) e.g. 8HA03

- 8 = Organisation Type Identifier
- Remainder = Organisation Identifier

B Frame:

Example

Local Service Provider e.g. LSP01

- LSP = Organisation Type Identifier
- 01 = Organisation Identifier

Also:

Application Service Provider	e.g. YGM01
Education Establishment	e.g. YDF01
NHS Support Agency	e.g. YDD01

C Frame:**Example**[School](#) e.g. EE134290

- EE = Organisation Type Identifier
 - Remainder = Organisation Identifier
-

D Frame:**Example**[Care Trust](#) e.g. TAK

- T = Organisation Type Identifier
- AK = Organisation Identifier

Also:

Commissioning Support Unit (CSU) / Data Services for Commissioners Regional Office (DSCRO)	e.g. 0AA
High Level Health Geography, e.g. NHS England (Region Local Office)	e.g. Q72
Local Health Board (Wales)	e.g. 7A1
NHS Trust	e.g. RH8
Justice Organisation	e.g. VAA

E Frame:**Example**[Government Office Region \(GOR\)](#) e.g. K

- K = Organisation Identifier

Note: [Government Office Region \(GOR\)](#) is identified by a one character code; no other one character code exists.**F Frame:****Example**[Pharmacy](#) Headquarters e.g. P001

- P = Organisation Type Identifier
- 001 = Organisation Identifier

Also:

Care Home Headquarters	e.g. CA0A
Optical Headquarters	e.g. T1A1

G Frame:**Example**[GP Practices](#) in England and Wales e.g. Y00001

- Y = Organisation Type Identifier
- 00001 = Practice Identifier

Also:

H Frame:**Example**

Cancer Network e.g. N01

- N0 (where the 2nd character is numeric and not alpha) = Organisation Type Identifier
- 1 = Organisation Identifier

Also:

Booking Management System (BMS) Call Centre Establishment	e.g. YF1
Government Department	e.g. XDA
Independent Sector Healthcare Provider (ISHP) (where the 2nd character is alpha)	e.g. NV7
National Application Service Provider	e.g. YEA
Other Statutory Authority (OSA)	e.g. X16

I Frame:**Example**[Special Health Authority \(SpHA\)](#) e.g. T1150

- T1 = Organisation Type Identifier
- 150 = Organisation Identifier

K Frame:**Example**[NHS Wales Informatics Service](#) e.g. W00

- W00 = Organisation Identifier

L Frame:**Example**[Northern Ireland Local Commissioning Group](#) e.g. ZC010

- Characters 1-3 (ZC0) AND character 5 (0) = Organisation Type Identifier
- Character 4 = Organisation Identifier

Note: this is a 5 character method of displaying [Northern Ireland Local Commissioning Group](#) identifiers. Characters 3 and 5 are 'fillers'. If a 3 character code is required (as used by the [Office for National Statistics](#) in the [NHS Postcode Directory](#)) zeros can be omitted, e.g. ZC1.

The 3 character method of displaying the [Northern Ireland Local Commissioning Group](#) identifiers fit under the H Frame. Guidance on the use of Northern Ireland codes can be found in [Data Set Change Notice 19/2009](#).

M Frame:**Example**[Clinical Commissioning Group \(CCG\)](#) e.g. 12A

- 12A = Organisation and Organisation Type Identifier

Also:

[Local Authority](#) e.g.000**N Frame:****Example**GP Abeyance and Dispersal [GP Practice](#) e.g. G7817414

- G78 = Organisation Type Identifier
- 17414 = Organisation Identifier

The structure and format of [ORGANISATION CODES](#) maintained by the [Organisation Data Service](#), [NHS Prescription Services](#), [NHS Dental Services](#) and other agencies are detailed in the tables below.

ORGANISATION CODES TABLES

Table 1: CODING FORMATS FOR ORGANISATIONS IN ENGLAND AND WALES

Organisation Type	Frame Type	Character Position								Code allocated by:	Notes/Comments
	See Coding Frames Table	1	2	3	4	5	6	7	8		
Application Service Provider	B	Y	G	M	A-9	A-9				ODS	E.g. YGM01
Booking Management System (BMS) Call Centre Establishment	H	Y	F	A-9						ODS	E.g. YF1
Cancer Network	H	N	0-9	A-9						ODS	E.g. N01
Cancer Registry	A	Y	0-9	0-9	0-9	0-9				ODS	E.g. Y0401 All Cancer Registries in England are now part of the National Cancer Registration and Analysis Service
Care Home Headquarters	F	A, C or D	A-9	A-9	A-9					ODS	E.g. CA0A
Care Trust (CT)	D	T	A-Y	A-Y						ODS	E.g. TAK
Clinical Commissioning Group (CCG)	M	0-9	0-9	A-Y						ODS	E.g. 12A
Clinical Network	B	Y	D	G	A-9	A-9				ODS	E.g. YDG01
Commissioning Support Unit (CSU) / Data Services for Commissioners Regional Office (DSCRO)	D	0	A-Y	A-Y						ODS	E.g. 0AA
Dental Practice - England and Wales	G	V	0-9	0-9	0-9	0-9	0-9			NHS Dental Services	E.g. V20052

Education Establishment	B	Y	D	F	A-9	A-9				ODS	E.g. YDF01
Executive Agency	N/A See Note 1	X	0-9	0-9						ODS	E.g. X09
Executive Agency Programme	N/A See Note 1	X	0-9	0-9	0-9	0-9	0-9			ODS	First three characters denote Executive Agency E.g. X09001
Government Department	H	X	A-Y	A-Y						ODS	E.g. XDA
Government Office Region (GOR)	E	A-Y								ONS	E.g. K Government Office Regions (GORs) closed 31 March 2011 - from 1 April 2011 referred to as Regions
GP Abeyance and Dispersal GP Practice	N	G	7	8	0-9	0-9	0-9	0-9	0-9	ODS	E.g. G7817414
GP Practices in England and Wales	G	A-H, J-N, P, W & Y	0-9	0-9	0-9	0-9	0-9			NHS Prescription Services	Char 1 = W for Welsh GP Practice . All other values represent GP Practices in England. Note: from 2003, ALL newly allocated Practice Codes in England begin with a Y E.g. Y00001
Justice Organisation	D	V or W	A-Y	A-9						ODS	E.g. VAA
High Level Health Geography, e.g. NHS England (Region Local Office)	D	Q	A-9	A-9						ODS	E.g. Q72
	H		A-Y							ODS	E.g. NV7

Independent Sector Healthcare Provider (ISHP)		A, B, D, G, I, K, L, M, N, O, S, U, V, W		A-Y, 0-9							
Local Authority (LA)	M	0-9	0-9	0-9						ODS	E.g. 000
Local Health Board (Wales)	B	7	A-9	A-9						ODS	E.g. 7A1
Local Service Provider (LSP)	B	L	S	P	0-9	0-9				ODS	E.g. LSP01
Military Hospital	B	X	M	D	A-9	A-9				ODS	E.g.XMDA1
National Application Service Provider	H	Y	E	A-9						ODS	E.g. YEA
National Groupings (England)	H	Y	5	0-9						ODS	E.g. Y51
NHS Support Agency	B	Y	D	D	A-9	A-9				ODS	E.g. YDD01
NHS Trust	D	R	A-9	A-9						ODS	E.g. RH8
NHS Wales Informatics Service (NWIS)	K	W	0	0						ODS	Only one organisation of this type exists for Wales E.g. W00
Non NHS Organisation (Independent Provider)	A	8	A-Y	A-9	0-9	0-9				ODS	E.g. 8HA03
Northern Ireland Health & Social Care Board	N/A	Z	B	0	0	1				ODS	E.g. ZB001
Northern Ireland Health & Social Care Trust	I	Z	T	0-9	0-9	0-9				ODS	E.g. ZT001
	L	Z	C	0	0-9	0					E.g. ZC010

Northern Ireland Local Commissioning Group										Department for Health, Social Services and Public Safety (DHSSPS), Northern Ireland	Note that characters 3 and 5 are 'fillers' to create a 5 character code. If a 3 character code is required (as used by the Office for National Statistics in the NHS Postcode Directory), zeros can be omitted and fits under the H frame: E.g. ZC1. <i>Guidance on the use of Northern Ireland codes can be found in Data Set Change Notice 19/2009.</i>
Optical Headquarters	F	T	0-9	A-9	A-9					ODS	E.g. T1A1
Other Statutory Authority (OSA)	H	X	0-9	0-9						ODS	E.g. X16
Pharmacy	A	F	A-Y	A-9	A-9	A-9				ODS	E.g. FA002
Pharmacy Headquarters	F	P	A-9	A-9	A-9					ODS	E.g. P001
Primary Care Trust (PCT)	D	5	A-9	A-9						ODS	E.g. 5CT All Primary Care Trusts closed 31 March 2013
Prison Health Service	B	Y	D	E	A-9	A-9				ODS	E.g. YDE01
School	C	E	E	A-9	A-9	A-9	A-9	A-9	A-9	Department for Education and ODS	E.g. EE134290
Special Health Authority (SpHA)	I	T	1	0-9	0-9	0				ODS	E.g. T1150
Strategic Health Authority (SHA)	D	Q	A-9	A-9						ODS	E.g. Q30 All Strategic Health Authorities in England closed 31 March 2013
Welsh Assembly	D	W	0-9	0-9						ODS	E.g. W01

Welsh Health Commission	A	W	0-9	0-9	A-Y	A-Y				ODS	E.g. W01HC
-------------------------	---	---	-----	-----	-----	-----	--	--	--	---------------------	------------

Notes:

- Codes for Executive Agency, Executive Agency Programme, Executive Agency Site and Executive Agency Programme Department do not easily fit into the coding frames as shown above and are therefore not included. This is due to their unusual structure in that there are more hierarchical 'tiers' than with other organisations.

Executive Agency and Executive Agency Programme are both considered Organisation level entities, although each Programme does have a relationship to an Executive Agency. Executive Agency codes are three characters long. Executive Agency Programme codes are six, and their first three characters are the same as the Executive Agency they are associated to.

Department codes of eight characters long can then be allocated underneath a Programme code (sharing the first six characters). Executive Agency Site codes of five characters long can be allocated under an Executive Agency code (and share the first three characters).

- A-9 indicates that characters A-Z and 0-9 are valid: except B, I, O, S, U and Z (to avoid ambiguity). This applies to all [ORGANISATION CODES](#) in the Coding Format Table above except [Independent Sector Healthcare Providers \(ISHP\)](#).

Table 2: CODING FORMATS FOR ORGANISATIONS IN SCOTLAND

Scottish [ORGANISATION CODES](#) are supplied by the Information Standards Directorate (ISD) from NHS Scotland and published by the [Organisation Data Service](#).

Organisation Type	Character Position						Code allocated by:	Notes/Comments
	1	2	3	4	5	6		
GP Practice - Scotland	S	0-9	0-9	0-9	0-9	0-9	NHS	
Scottish GP Fundholder	S	A-Z	B	0-9	0-9		ISD, Scotland	2nd character identifies the Health Board the GPFH reports to. 3rd character (always B) shows GPFH status.
Scottish Health Agency	S	D	0-9	0-9	0-9		ISD, Scotland	2nd character (D) identifies Scottish Office agencies
Scottish Health Board	S	A-Z	9	9	9		ISD, Scotland	
Scottish Provider	S	A-Z	A,C,D	0-9	0-9		ISD, Scotland	2nd character identifies the Health Board the organisation reports to. 3rd character identifies the organisation type: A= Health Unit C = Hospital Trust D = Nursing Home

Table 3: CODING FORMATS for ORGANISATIONS in OTHER HOME COUNTRIES

Organisation Type	Character Position						Code allocated by:	Notes/Comments
	1	2	3	4	5	6		
GP Practice - Alderney	A	L	D	0-9	0-9	0-9	NHS Prescription Services	
GP Practice - Guernsey	G	U	E	0-9	0-9	0-9	NHS Prescription Services	
GP Practice - Isle of Man (IOM)	Y	0-9	0-9	0-9	0-9	0-9	NHS Prescription Services	
GP Practice - Jersey	J	E	R	0-9	0-9	0-9	NHS Prescription Services	
Primary Healthcare Directorate (Isle of Man)	Y	K	A-9				ODS	E.g. YK1

Note: A-9 indicates that characters A-Z and 0-9 are valid: except B, I, O, S, U and Z (to avoid ambiguity).

ORGANISATION IDENTIFIER

Change to Attribute: Changed Dataset

A unique identifier for an [ORGANISATION](#).

Note:

- [ORGANISATION IDENTIFIERS](#) are governed by the fundamental standard for "Health and Social Care Organisation Reference Data" (HSC Org Ref Data).
- The standard only relates to [ORGANISATION IDENTIFIERS](#) which are maintained and published by the [Organisation Data Service \(ODS\)](#). See [Health and Social Care Organisation Reference Data](#).

The Format/Length of a published code for an:

- [Organisation](#) is min an3 max an8
- [Organisation Site](#) is min an5 max an9.

[ORGANISATION CODE](#) will be replaced with [ORGANISATION IDENTIFIER](#), which is the most recent approved national information standard to describe the required definition.

OUTCOME AT 4 WEEK FOLLOW-UP FOR STOP SMOKING_ renamed from OUTCOME AT 4 WEEK FOLLOW-UP

Change to Attribute: Changed Description, Name

The outcome of a [Person Stop Smoking Episode](#) at the 4 week follow up after the [SMOKING QUIT DATE](#) on a self reporting basis. That is those who have received at least one session of a structured, multi-session intervention (delivered by the NHS or one of its trained agents), whose quit status at four weeks from their [SMOKING QUIT DATE](#) (or within 25 to 42 days of the [SMOKING QUIT DATE](#)) has been assessed (face-to-face, by telephone or by postal questionnaire).

National Code 1 '*Successfully quit at 4 week follow-up (self-report)*' should be those who report not having smoked since 2 weeks after the [SMOKING QUIT DATE](#). The outcome of a Person Stop Smoking Episode, at the 4 week follow-up after the Intended Smoking Quit Date on a self-reporting basis. That is those who have received at least one session of a structured, multi-session intervention (delivered by the NHS or one of its trained agents), whose quit status at four weeks from their [Intended Smoking Quit Date](#) (or within 25 to 42 days of the [Intended Smoking Quit Date](#)) has been assessed (face-to-face, by telephone or by postal questionnaire).

National Code 3 '*Non-smoking status not known/lost to follow-up*' should include all [PERSONS](#) whom it has not been possible to successfully follow up at four weeks (-3 days or +14 days) from the [SMOKING QUIT DATE](#).

For follow-up, [PERSONS](#) should either be seen in-person or contacted by telephone. Up to 3 attempts should be made to reach the [PERSON](#) by telephone, text or email; any [PERSON](#) not contacted after 3 attempts should be assumed to be 'lost to follow-up'.

National Codes:

- 4 Successfully quit at 4 week follow-up (self-report)
- 1 Successfully quit at 4 week follow-up (self-report)*
- 2 Not quit at 4 week follow-up (self-report)
- 3 Non-smoking status not known/lost to follow-up
- 3 Non-smoking status not known/lost to follow-up**

Notes:

- * National Code '*Successfully quit at 4 week follow-up (self-report)*' should be those who report not having smoked for 2 weeks after the [Intended Smoking Quit Date](#).
- ** National Code '*Non-smoking status not known/lost to follow-up*' should include all [PERSONS](#) for whom it has not been possible to successfully follow-up at four weeks (-3 days or +14 days) from the [Intended Smoking Quit Date](#).

OUTCOME AT 4 WEEK FOLLOW-UP FOR STOP SMOKING, renamed from OUTCOME AT 4 WEEK FOLLOW-UP

Change to Attribute: Changed Description, Name

- Changed Description
- Changed Name from `Data_Dictionary.Attributes.O.Out.OUTCOME_AT_4_WEEK_FOLLOW-UP` to `Data_Dictionary.Attributes.O.Out.OUTCOME_AT_4_WEEK_FOLLOW-UP_FOR_STOP_SMOKING`

PERSON GENDER CODE

Change to Attribute: Changed Dataset

The classification is phenotypical rather than genotypical, i.e. it does not provide codes for medical or scientific purposes.

Notes:

- National Code '*Not Known*' means that the sex of a [PERSON](#) has not been recorded
- National Code '*Not Specified*' means indeterminate, i.e. unable to be classified as either male or female.

National Codes:

- 0 Not Known
- 1 Male
- 2 Female
- 9 Not Specified

Note:

This was [e-GIF](#) approved for use in NHS England.

[e-GIF](#) and the [Government Data Standards Catalogue](#) have been archived and are available for reference only.

[PERSON GENDER CODE](#) will be replaced with [PERSON STATED GENDER CODE](#) or [PERSON PHENOTYPIC SEX CLASSIFICATION](#), which is the most recent approved national information standard to describe the required definition.

PERSON OBSERVATION TEXT STRING

Change to Attribute: Changed Dataset

A free text string to record a [PERSON PROPERTY](#).

PERSON STATED GENDER CODE

Change to Attribute: Changed Dataset

The gender of a [PERSON](#).

[PERSON STATED GENDER CODE](#) is self declared or inferred by observation for those unable to declare their [PERSON STATED GENDER](#).

National Codes:

- 1 Male
- 2 Female
- 9 Indeterminate (unable to be classified as either male or female)

[PERSON GENDER CODE](#) will be replaced with [PERSON STATED GENDER CODE](#) or [PERSON PHENOTYPIC SEX CLASSIFICATION](#), which is the most recent approved national information standard to describe the required definition.

PHARMACOTHERAPY STOP SMOKING AID RECEIVED

Change to Attribute: Changed Dataset, Description

~~A code to identify whether a [PATIENT](#) received a particular pharmacotherapy treatment during a [Person Stop Smoking Episode](#)~~
A code to identify whether a [PERSON](#) received a particular pharmacotherapy aid during a [Person Stop Smoking Episode](#).

~~It should be taken that a [PATIENT](#) received such an aid regardless of the method by which a [PATIENT](#) might obtain their relevant aid—whether through prescription, purchase, or supply free of charge, including through a voucher scheme where this is still in operation.~~

National Codes:

- 01 Received Nicotine Replacement Therapy only
- 02 Received bupropion (Zyban) only
- 03 Received varenicline (Champix) only
- 04 Received both Nicotine Replacement Therapy and bupropion (Zyban) either concurrently or consecutively
- 05 Received both Nicotine Replacement Therapy and varenicline (Champix) consecutively
- 06 Did not receive either Nicotine Replacement Therapy, bupropion (Zyban) or varenicline (Champix)
- 01 Received Nicotine Replacement Therapy Only (Retired XXXX)
- 02 Received bupropion (Zyban) only (Retired XXXX)
- 03 Received varenicline (Champix) only (Retired XXXX)
- 04 Received both Nicotine Replacement Therapy and bupropion (Zyban) either concurrently or consecutively (Retired XXXX)
- 05 Received both Nicotine Replacement Therapy and varenicline (Champix) consecutively (Retired XXXX)
- 06 Did not receive either Nicotine Replacement Therapy, bupropion (Zyban) or varenicline (Champix) (Retired XXXX)
- 10 Received a combination of licensed nicotine containing products concurrently
- 11 Received bupropion only
- 12 Received varenicline only
- 13 Received a licensed nicotine containing product, and/or bupropion and/or varenicline consecutively
- 14 Used a combination of a licensed medication and an unlicensed nicotine containing product concurrently
- 15 Used a licensed medication and an unlicensed nicotine containing product consecutively
- 16 Used an unlicensed nicotine containing product only
- 17 Did not use any licensed medication or unlicensed nicotine containing product

PREGNANCY STATUS

Change to Attribute: Changed Description

An indication of whether the female [PERSON](#) is pregnant.

Note: this item does not meet the requirements of the [Equality Act](#).

National Codes:

- Y Yes
- N No
- Z Not stated ([PERSON](#) asked but declined to provide a response)

REPORTING PERIOD END DATE

Change to Attribute: Changed Dataset

The date that a [REPORTING PERIOD](#) ends.

REPORTING PERIOD QUARTER END DATE

Change to Attribute: New Attribute

The date that a quarterly [REPORTING PERIOD](#) ends.

[REPORTING PERIOD QUARTER END DATE](#) is the end date of the quarterly [REPORTING PERIOD](#) and is used in conjunction with [REPORTING PERIOD QUARTER START DATE](#) to specify the actual period the reported information relates to.

This attribute is also known by these names:

Context	Alias
plural	REPORTING PERIOD QUARTER END DATES

REPORTING PERIOD QUARTER END DATE

Change to Attribute: New Attribute

REPORTING PERIOD QUARTER END DATE

Data Elements:

REPORTING PERIOD QUARTER END DATE

REPORTING PERIOD QUARTER START DATE

Change to Attribute: New Attribute

The date that a quarterly [REPORTING PERIOD](#) begins.

[REPORTING PERIOD QUARTER START DATE](#) is the start date of the quarterly [REPORTING PERIOD](#) and is used in conjunction with [REPORTING PERIOD QUARTER END DATE](#) to specify the actual period the reported information relates to.

This attribute is also known by these names:

Context	Alias
plural	REPORTING PERIOD QUARTER START DATES

REPORTING PERIOD QUARTER START DATE

Change to Attribute: New Attribute

REPORTING PERIOD QUARTER START DATE

Data Elements:

REPORTING PERIOD QUARTER START DATE

REPORTING PERIOD START DATE

Change to Attribute: Changed Dataset

The date that a [REPORTING PERIOD](#) begins.

SMOKING QUIT DATE (RETIRED), renamed from SMOKING QUIT DATE

Change to Attribute: Changed Description, status to Retired, Name

[SMOKING QUIT DATE](#) is the [Smoking Quit Date](#). This item has been retired from the NHS Data Model and Dictionary.

For [PERSONS](#) using bupropion (Zyban), it is recommended that a [SMOKING QUIT DATE](#) is set within the first 2 weeks of therapy, usually in the second week, e.g. day 8. **The last live version of this item is available in the ?????? release of the NHS Data Model and Dictionary.**

For [PERSONS](#) using Champix, current license specification and preliminary guidance indicates that a [SMOKING QUIT DATE](#) should fall on the 8th day after commencement of dosing with Champix. **Access to this version can be obtained by emailing information.standards@nhs.net with "NHS Data Model and Dictionary - Archive Request" in the email subject line.**

SMOKING QUIT DATE (RETIRED), renamed from SMOKING QUIT DATE

Change to Attribute: Changed Description, status to Retired, Name

- Changed Description
- Retired SMOKING QUIT DATE
- Changed Name from Data_Dictionary.Attributes.S.Smo.SMOKING_QUIT_DATE to Retired.Data_Dictionary.Attributes.S.SMOKING_QUIT_DATE

SOCIO-ECONOMIC CLASSIFICATION CODE (RETIRED), renamed from SOCIO-ECONOMIC CLASSIFICATION CODE

Change to Attribute: Changed Dataset, Description, status to Retired, Name

The codes for the [SOCIO-ECONOMIC CLASSIFICATION](#) based on the [Office for National Statistics](#) socio-economic classification.

National Codes: **This item has been retired from the NHS Data Model and Dictionary.**

- L1 Employers in large organisations
- L2 Higher managerial occupations
- L3 Higher professional occupations
- L4 Lower professional and higher technical occupations
- L5 Lower managerial occupations
- L6 Higher supervisory occupations
- L7 Intermediate Occupations
- L8 Employers in small organisations
- L9 Own account workers
- L10 Lower supervisory occupations
- L11 Lower technical occupations
- L12 Semi-routine occupations
- L13 Routine occupations
- L14 Never worked and long term unemployed
- L15 Full time student
- L16 Occupations not stated or inadequately described
- L17 Not classifiable for other reasons such as home carer (i.e. looking after children, family or home), sick or disabled and unable to work
- 000 Non-employed

Further guidance on coding can be found at the [Office for National Statistics – The National Statistics Socio-economic Classification \(NS-SEC\)](#). **The last live version of this item is available in the ?????? release of the NHS Data Model and Dictionary.**

Access to this version can be obtained by emailing information.standards@nhs.net with "NHS Data Model and Dictionary - Archive Request" in the email subject line.

SOCIO-ECONOMIC CLASSIFICATION CODE (RETIRED), renamed from SOCIO-ECONOMIC CLASSIFICATION CODE

Change to Attribute: Changed Dataset, Description, status to Retired, Name

- null
- Changed Description
- Retired SOCIO-ECONOMIC CLASSIFICATION CODE
- Changed Name from Data_Dictionary.Attributes.S.Smo.SOCIO-ECONOMIC_CLASSIFICATION_CODE to Retired.Data_Dictionary.Attributes.S.SOCIO-ECONOMIC_CLASSIFICATION_CODE

SOCIO-ECONOMIC CLASSIFICATION CODE FOR STOP SMOKING

Change to Attribute: New Attribute

The **SOCIO-ECONOMIC CLASSIFICATION** codes are based on the [Office for National Statistics socio-economic classification for a Stop Smoking Service](#).

National Codes:

- 01 Full-time Student
- 02 Never worked or unemployed for over one year*
- 03 Retired
- 04 Home carer i.e. looking after children, family or home
- 05 Sick or disabled and unable to work
- 06 Managerial/ professional. Examples include: accountant, artist, civil/mechanical engineer, medical practitioner, musician, nurse, police officer (sergeant or above), physiotherapist, scientist, social worker, software engineer, solicitor, teacher, welfare officer. Those usually responsible for planning, organising and co-ordinating work for finance
- 07 Intermediate. Examples include: call centre agent, clerical worker, nursery auxiliary, office clerk, secretary
- 08 Routine and manual (self employed should not be included in this category). Examples include: electrician, fitter, gardener, inspector, plumber, printer, train driver, tool maker, bar staff, caretaker, catering assistant, cleaner, farm worker, HGV driver, labourer, machine operative, messenger, packer, porter, postal worker, receptionist, sales assistant, security guard, sewing machinist, van driver, waiter/waitress
- 09 Prisoner
- 96 Other (not listed)

* Note: If unemployed for less than one year, last known occupation should be used for classification.

Further information on mapping can be found on the [National Centre for Smoking Cessation and Training website at Local Stop Smoking Services: Service and Delivery Guidance 2014](#).

This attribute is also known by these names:

Context	Alias
plural	SOCIO-ECONOMIC CLASSIFICATION CODES FOR STOP SMOKING

SOCIO-ECONOMIC CLASSIFICATION CODE FOR STOP SMOKING

Change to Attribute: New Attribute

SOCIO-ECONOMIC CLASSIFICATION CODE FOR STOP SMOKING

Data Elements:

SOCIO-ECONOMIC CLASSIFICATION CODE (STOP SMOKING)

AGE BAND AT SMOKING QUIT DATE

Change to Data Element: Changed Dataset, Description

Format/Length:	n2
Format/Length:	an2
National Codes:	
Default Codes:	99 – Not known i.e. date of birth not known
Default Codes:	

Notes:

[AGE BAND AT SMOKING QUIT DATE](#) is derived as the number of completed years between the [PERSON BIRTH DATE](#) of the [PERSON](#) and the [SMOKING QUIT DATE](#) of the [Person Stop Smoking Episode](#). [AGE BAND AT SMOKING QUIT DATE](#) is derived as the number of completed years between the [PERSON BIRTH DATE](#) and the [Intended Smoking Quit Date](#) of the [Person Stop Smoking Episode](#).

Permitted National Codes:

- 01 Under 18 years of age
- 02 18 to 34 years of age
- 03 35 - 44 years of age
- 04 45 - 59 years of age
- 05 60 and over years of age

ETHNIC CATEGORY

Change to Data Element: Changed Dataset, Description

Format/Length:	an2
NWDS ID:	PETH
NWDS Field Name:	Ethnic Category
ESR Field Name:	Ethnic Origin
National Codes:	See ETHNIC CATEGORY CODE
Default Codes:	99 - Not known
Default Codes:	99 - Not known*

Notes:

[ETHNIC CATEGORY](#) is the same as attribute [ETHNIC CATEGORY CODE](#).

The 16+1 ethnic data categories defined in the 2001 census is the national mandatory standard for the collection and analysis of ethnicity.

The national code must be transmitted as the first character in the 2 character field. The second character is optional for use locally. It must, however, be able to be grouped consistently with the 16 main categories.

National code Z should be used where the [PERSON](#) has been given the opportunity to state their [ETHNIC CATEGORY](#) but chose not to. Default code 99 should be used where the [PERSON](#)'s [ETHNIC CATEGORY](#) is not known.

*For the [Stop Smoking Services Quarterly Data Set](#) default code 99 'Not Known' is **NOT** valid.

INTERVENTION SESSION TYPE (STOP SMOKING)

Change to Data Element: Changed Dataset, Description, linked Attribute

Format/Length:	n2
National Codes:	See INTERVENTION SESSION TYPE
Format/Length:	an2
National Codes:	See INTERVENTION SESSION TYPE FOR STOP SMOKING
Default Codes:	

Notes:

~~[INTERVENTION SESSION TYPE \(STOP SMOKING\)](#) is the same as attribute [INTERVENTION SESSION TYPE](#) for a [CLINICAL INTERVENTION](#) as part of a [Stop Smoking Service](#).~~ [INTERVENTION SESSION TYPE \(STOP SMOKING\)](#) is the same as attribute [INTERVENTION SESSION TYPE FOR STOP SMOKING](#).

INTERVENTION SESSION TYPE (STOP SMOKING)

Change to Data Element: Changed Dataset, Description, linked Attribute

INTERVENTION SESSION TYPE (STOP SMOKING)

Attribute:

INTERVENTION SESSION TYPE
INTERVENTION SESSION TYPE FOR STOP SMOKING

INTERVENTION SETTING TYPE (STOP SMOKING), renamed from INTERVENTION SETTING (STOP SMOKING)

Change to Data Element: Changed Dataset, Description, Name, linked Attribute

Format/Length:	n2
National Codes:	See INTERVENTION SETTING
Format/Length:	an2
National Codes:	See INTERVENTION SETTING TYPE FOR STOP SMOKING
Default Codes:	

Notes:

~~[INTERVENTION SETTING \(STOP SMOKING\)](#) is the [INTERVENTION SETTING](#) used for a [CLINICAL INTERVENTION](#) as part of a [Stop Smoking Service](#).~~ [INTERVENTION SETTING TYPE \(STOP SMOKING\)](#) is the same as attribute [INTERVENTION SETTING TYPE FOR STOP SMOKING](#).

INTERVENTION SETTING TYPE (STOP SMOKING), renamed from INTERVENTION SETTING (STOP SMOKING)

Change to Data Element: Changed Dataset, Description, Name, linked Attribute

INTERVENTION SETTING (STOP SMOKING)

INTERVENTION SETTING TYPE (STOP SMOKING)

Attribute:

[INTERVENTION SETTING](#)

INTERVENTION SETTING TYPE FOR STOP SMOKING

INTERVENTION SETTING TYPE (STOP SMOKING) renamed from INTERVENTION SETTING (STOP SMOKING)

Change to Data Element: Changed Dataset, Description, Name, linked Attribute

- null
- Changed Description
- Changed Name from Data_Dictionary.Data_Field_Notes.I.In.INTERVENTION_SETTING_(STOP_SMOKING) to Data_Dictionary.Data_Field_Notes.I.In.INTERVENTION_SETTING_TYPE_(STOP_SMOKING)
- null

ORGANISATION CODE (STOP SMOKING SERVICE PROVIDER) (RETIRED), renamed from ORGANISATION CODE (STOP SMOKING SERVICE PROVIDER)

Change to Data Element: Changed Dataset, Description, status to Retired, Name, linked Attribute

Format/Length:	See ORGANISATION CODE
National Codes:	
ODS Default Codes:	80007 – Non UK provider where no ORGANISATION CODE has been issued 80000 – Non NHS UK provider where no ORGANISATION CODE has been issued

Notes:

[ORGANISATION CODE \(STOP SMOKING SERVICE PROVIDER\)](#) is the same as attribute [ORGANISATION CODE](#).

[ORGANISATION CODE \(STOP SMOKING SERVICE PROVIDER\)](#) is the same as data element [ORGANISATION CODE \(RESPONSIBLE PCT\)](#) with the exception of [PERSONS](#) receiving a [Stop Smoking Service](#) at or near their workplace, which may be some distance from their home. **This item has been retired from the NHS Data Model and Dictionary.**

For example, a [Stop Smoking Service](#) might be provided for commuters at their workplace in a large city. In such circumstances it is likely that [PERSONS](#) will be drawn from a range of places in the surrounding area e.g. commuters to London who live all around the south-east of England. **The last live version of this item is available in the ?????? release of the NHS Data Model and Dictionary.**

Where a [SERVICE](#) is judged to meet these criteria, the [Primary Care Trust](#) providing the [SERVICE](#) is the [Responsible Primary Care Trust](#). **Access to this version can be obtained by emailing information.standards@nhs.net with "NHS Data Model and Dictionary - Archive Request" in the email subject line.**

ORGANISATION CODE (STOP SMOKING SERVICE PROVIDER) (RETIRED), renamed from ORGANISATION CODE (STOP SMOKING SERVICE PROVIDER)

Change to Data Element: Changed Dataset, Description, status to Retired, Name, linked Attribute

ORGANISATION CODE (STOP SMOKING SERVICE PROVIDER)

Attribute:

[ORGANISATION CODE](#)

ORGANISATION CODE (STOP SMOKING SERVICE PROVIDER) (RETIRED), renamed from ORGANISATION CODE (STOP SMOKING SERVICE PROVIDER)

Change to Data Element: Changed Dataset, Description, status to Retired, Name, linked Attribute

- null
- Changed Description
- Retired ORGANISATION CODE (STOP SMOKING SERVICE PROVIDER)
- Changed Name from Data_Dictionary.Data_Field_Notes.O.Org.ORGANISATION_CODE_(STOP_SMOKING_SERVICE_PROVIDER) to Retired.Data_Dictionary.Data_Field_Notes.O.ORGANISATION_CODE_(STOP_SMOKING_SERVICE_PROVIDER)
- null

ORGANISATION IDENTIFIER (STOP SMOKING SERVICE PROVIDER)

Change to Data Element: New Data Element

Format/Length:	min an3 max an5
National Codes:	

Notes:

[ORGANISATION IDENTIFIER \(STOP SMOKING SERVICE PROVIDER\)](#) is the same as attribute [ORGANISATION IDENTIFIER](#) for the provider of the [Stop Smoking Service](#).

The data should be collected on responsible [Local Authority](#) basis. The [Local Authority's](#) responsible population comprises:

- A **PERSON** registered with a **GP Practice** that forms part of the **Local Authority's** statutory geographical boundary, regardless of where the **PERSON** is resident, plus any **PERSONS** not registered with a **GP Practice** who are resident within the **Local Authority's** statutory geographical boundary.
- Note that a **PERSON** resident within the **Local Authority's** statutory geographical boundary, but registered with a **GP Practice** that forms part of another **Local Authority**, are the responsibility of that other **Local Authority**.

The only exception to the above rules is where a **PERSON** receives a **Stop Smoking Service** at or near their workplace, which may be some distance from their home. For example, a **Stop Smoking Service** might be provided for commuters at their workplace in a large city. In such circumstances it is likely that people will be drawn from a range of places in the surrounding area e.g. commuters to London who live all around the south-east of England. Where a **PERSON** is judged to meet these criteria, the **Local Authority** providing the **Stop Smoking Service** should include these people in their returns.

This data element is also known by these names:

Context	Alias
plural	ORGANISATION IDENTIFIERS (STOP SMOKING SERVICE PROVIDER)

ORGANISATION IDENTIFIER (STOP SMOKING SERVICE PROVIDER)

Change to Data Element: New Data Element

ORGANISATION IDENTIFIER (STOP SMOKING SERVICE PROVIDER)

Attribute:

ORGANISATION IDENTIFIER

PERSON GENDER CURRENT (RETIRED), renamed from **PERSON GENDER CURRENT**

Change to Data Element: Changed Dataset, Description, status to Retired, Name, linked Attribute

Format/Length:	4-numeric
National Codes:	See PERSON GENDER CODE
Default Codes:	

Notes:

[PERSON GENDER CURRENT](#) is the same as attribute [PERSON GENDER CODE](#).

[PERSON GENDER CURRENT](#) is a **PERSON's** gender currently. **This item has been retired from the NHS Data Model and Dictionary.**

[PERSON GENDER CURRENT](#) will be replaced with [PERSON STATED GENDER CODE](#) or [PERSON PHENOTYPIC SEX](#), which is the most recent approved national information standard to describe the required definition. The last live version of this item is available in the **??????** release of the NHS Data Model and Dictionary.

Access to this version can be obtained by emailing information.standards@nhs.net with "NHS Data Model and Dictionary - Archive Request" in the email subject line.

PERSON GENDER CURRENT (RETIRED), renamed from **PERSON GENDER CURRENT**

Change to Data Element: Changed Dataset, Description, status to Retired, Name, linked Attribute

PERSON GENDER CURRENT

Attribute:

PERSON GENDER CODE

PERSON GENDER CURRENT (RETIRED), renamed from **PERSON GENDER CURRENT**

Change to Data Element: Changed Dataset, Description, status to Retired, Name, linked Attribute

- null
- Changed Description
- Retired **PERSON GENDER CURRENT**
- Changed Name from `Data_Dictionary.Data_Field_Notes.P.Pers.PERSON_GENDER_CURRENT` to `Retired.Data_Dictionary.Data_Field_Notes.P.PERSON_GENDER_CURRENT`
- null

PERSON PHENOTYPIC SEX

Change to Data Element: Changed Description

Format/Length:	an1
National Codes:	See PERSON PHENOTYPIC SEX CLASSIFICATION
Default Codes:	X - Not Known (PERSON PHENOTYPIC SEX CLASSIFICATION not recorded)

Notes:

[PERSON PHENOTYPIC SEX](#) is the same as attribute [PERSON PHENOTYPIC SEX CLASSIFICATION](#).

~~[PERSON GENDER CURRENT](#) and [PERSON GENDER CODE CURRENT](#) will be replaced with [PERSON STATED GENDER CODE](#) or [PERSON PHENOTYPIC SEX](#), which is the most recent approved national information standard to describe the required definition.~~ [PERSON GENDER CODE CURRENT](#) will be replaced with [PERSON STATED GENDER CODE](#) or [PERSON PHENOTYPIC SEX](#), which is the most recent approved national information standard to describe the required definition.

PERSON STATED GENDER CODE

Change to Data Element: Changed Description

Format/Length:	an1
National Codes:	See PERSON STATED GENDER CODE
Default Codes:	X - Not Known (PERSON STATED GENDER CODE not recorded)

Notes:

[PERSON STATED GENDER CODE](#) is the same as attribute [PERSON STATED GENDER CODE](#).

~~[PERSON GENDER CURRENT](#) and [PERSON GENDER CODE CURRENT](#) will be replaced with [PERSON STATED GENDER CODE](#) or [PERSON PHENOTYPIC SEX](#), which is the most recent approved national information standard to describe the required definition.~~ [PERSON GENDER CODE CURRENT](#) will be replaced with [PERSON STATED GENDER CODE](#) or [PERSON PHENOTYPIC SEX](#), which is the most recent approved national information standard to describe the required definition.

PERSON STATED GENDER CODE (STOP SMOKING)

Change to Data Element: New Data Element

Format/Length:	an1
National Codes:	
Default Codes:	

Notes:

[PERSON STATED GENDER CODE \(STOP SMOKING\)](#) is the same as attribute [PERSON STATED GENDER CODE](#), for the [Stop Smoking Services Quarterly Data Set](#).

Permitted National Codes:

- 1 Male
- 2 Female

PERSON STATED GENDER CODE (STOP SMOKING)

Change to Data Element: New Data Element

PERSON STATED GENDER CODE (STOP SMOKING)

Attribute:

PERSON STATED GENDER CODE

PHARMACOTHERAPY STOP SMOKING AID RECEIVED

Change to Data Element: Changed Dataset, Description

Format/Length:	n2
National Codes:	
Format/Length:	an2
National Codes:	See PHARMACOTHERAPY STOP SMOKING AID RECEIVED

Default Codes: 99 - Treatment option not known

Notes:

This is the same as attribute [PHARMACOTHERAPY STOP SMOKING AID RECEIVED](#). [PHARMACOTHERAPY STOP SMOKING AID RECEIVED](#) is the same as attribute [PHARMACOTHERAPY STOP SMOKING AID RECEIVED](#).

If a [PERSON](#) is 'lost to follow up' at 4 weeks (where it has not been possible successfully to follow-up during the period four to six weeks from the [SMOKING QUIT DATE](#), see [OUTCOME AT 4 WEEK FOLLOW UP](#)) and it is not known what aids (if any) they received, they should be recorded as National Code 99 'Treatment option not known'. If a [PERSON](#) is 'lost to follow-up' at 4 weeks (where it has not been possible successfully to follow-up during the period four to six weeks from the [Intended Smoking Quit Date](#), see [OUTCOME AT 4 WEEK FOLLOW-UP FOR STOP SMOKING](#)) and it is not known what aids (if any) they received, they should be recorded as default code 'Treatment option not known'.

REPORTING PERIOD END DATE

Change to Data Element: Changed Dataset

Format/Length: See [DATE](#)
National Codes:
Default Codes:

Notes:

[REPORTING PERIOD END DATE](#) is the same as attribute [REPORTING PERIOD END DATE](#).

[REPORTING PERIOD END DATE](#) is the end date of the [REPORTING PERIOD](#) and is used in conjunction with [REPORTING PERIOD START DATE](#) to specify the actual period the reported information relates to.

The date should not be before the [REPORTING PERIOD START DATE](#) although it can be the same if the period being reported only covers 1 day.

REPORTING PERIOD QUARTER END DATE

Change to Data Element: New Data Element

Format/Length: See [DATE](#)
National Codes:
Default Codes:

Notes:

[REPORTING PERIOD QUARTER END DATE](#) is the same as attribute [REPORTING PERIOD QUARTER END DATE](#).

This data element is also known by these names:

Context	Alias
plural	REPORTING PERIOD QUARTER END DATES

REPORTING PERIOD QUARTER END DATE

Change to Data Element: New Data Element

REPORTING PERIOD QUARTER END DATE

Attribute:

[REPORTING PERIOD QUARTER END DATE](#)

REPORTING PERIOD QUARTER START DATE

Change to Data Element: New Data Element

Format/Length: See [DATE](#)
National Codes:
Default Codes:

Notes:

[REPORTING PERIOD QUARTER START DATE](#) is the same as attribute [REPORTING PERIOD QUARTER START DATE](#).

This data element is also known by these names:

Context	Alias
plural	REPORTING PERIOD QUARTER START DATES

REPORTING PERIOD QUARTER START DATE

Change to Data Element: New Data Element

REPORTING PERIOD QUARTER START DATE

Attribute:

REPORTING PERIOD QUARTER START DATE

REPORTING PERIOD START DATE

Change to Data Element: Changed Dataset

Format/Length: See DATE
National Codes:
Default Codes:

Notes:

[REPORTING PERIOD START DATE](#) is the same as attribute [REPORTING PERIOD START DATE](#).

[REPORTING PERIOD START DATE](#) is the start date of the [REPORTING PERIOD](#) and is used in conjunction with [REPORTING PERIOD END DATE](#) to specify the actual period the reported information relates to.

The date should not be after the [REPORTING PERIOD END DATE](#) although it can be the same if the period being reported only covers 1 day.

SOCIO-ECONOMIC CLASSIFICATION CODE (STOP SMOKING)

Change to Data Element: Changed Dataset, Description, linked Attribute

Format/length: an2
National Codes: SOCIO-ECONOMIC CLASSIFICATION CODE
Default Codes: 99 – Unknown
Format/Length: an2
National Codes: See SOCIO-ECONOMIC CLASSIFICATION CODE FOR STOP SMOKING .
Default Codes:

Notes:

The [SOCIO-ECONOMIC CLASSIFICATION CODE](#) for the [Stop Smoking Service](#) based on a simplified version of the [Office for National Statistics](#) socio-economic classification. These are derived as:

Permitted National Codes:

- 01 Full time student (The National Statistics [SOCIO-ECONOMIC CLASSIFICATION CODE](#) L15)
- 02 Never worked or unemployed for over one year. If unemployed for less than one year, last known occupation should be used for classification. (The National Statistics [SOCIO-ECONOMIC CLASSIFICATION CODE](#) L14)
- 03 Retired (The National Statistics [SOCIO-ECONOMIC CLASSIFICATION CODE](#) Non-employed)
- 04 Home carer i.e. looking after children, family or home (The National Statistics [SOCIO-ECONOMIC CLASSIFICATION CODE](#) L17)
- 05 Sick or disabled and unable to work (The National Statistics [SOCIO-ECONOMIC CLASSIFICATION CODE](#) L17)
- 06 Managerial/professional. Examples include: accountant, artist, civil/mechanical engineer, medical practitioner, musician, nurse, police officer (sergeant or above), physiotherapist, scientist, social worker, software engineer, solicitor, teacher, welfare officer. Those usually responsible for planning, organising and co-ordinating work for finance. (The National Statistics [SOCIO-ECONOMIC CLASSIFICATION CODE](#) L1-L6)
- 07 Intermediate. Examples include: call centre agent, clerical worker, nursery auxiliary, office clerk, secretary. (The National Statistics [SOCIO-ECONOMIC CLASSIFICATION CODE](#) L7-L9)
- 08 Routine and manual (self-employed should not be included in this category). Examples include: electrician, fitter, gardener, inspector, plumber, printer, train driver, tool maker, bar staff, caretaker, catering assistant, cleaner, farm worker, HGV driver, labourer, machine operative, messenger, packer, porter, postal worker, receptionist, sales assistant, security guard, sewing machinist, van driver, waiter/waitress. (The National Statistics [SOCIO-ECONOMIC CLASSIFICATION CODE](#) L10-L13)
- 96 Unable to code (The National Statistics [SOCIO-ECONOMIC CLASSIFICATION CODE](#) L16 – Occupations not stated or inadequately described)

Further guidance on coding can be found at [NHS Stop Smoking Services, Services and monitoring guidance](#) and the [Office for National Statistics – The National Statistics Socio-economic Classification \(NS-SEC\)](#).

SOCIO-ECONOMIC CLASSIFICATION CODE (STOP SMOKING) is the same as attribute **SOCIO-ECONOMIC CLASSIFICATION CODE FOR STOP SMOKING**.

SOCIO-ECONOMIC CLASSIFICATION CODE (STOP SMOKING)

Change to Data Element: Changed Dataset, Description, linked Attribute

SOCIO-ECONOMIC CLASSIFICATION CODE (STOP SMOKING)

Attribute:

SOCIO-ECONOMIC CLASSIFICATION CODE
SOCIO-ECONOMIC CLASSIFICATION CODE FOR STOP SMOKING

SOCIO-ECONOMIC CLASSIFICATION CODE (STOP SMOKING)

Change to Data Element: Changed Dataset, Description, linked Attribute

- null
- Changed Description
- null

STOP SMOKING EXCEPTION VALIDATION INDICATOR (RETIRED) renamed from **STOP SMOKING EXCEPTION VALIDATION INDICATOR**

Change to Data Element: Changed Dataset, Description, status to Retired, Name

Format/Length:	an1
National Codes:	
Default Codes:	

Notes:

[STOP SMOKING EXCEPTION VALIDATION INDICATOR](#) is an indicator of when validation has been conducted for exception reporting on [STOP SMOKING SETTING QUIT DATE COUNTS \(PREGNANT WOMEN\)](#) and [STOP SMOKING SUCCESSFULLY QUIT COUNTS \(AGE AND GENDER\)](#) within particular [INTERVENTION SETTINGS](#) or [INTERVENTION SESSION TYPES](#). **This item has been retired from the NHS Data Model and Dictionary.**

The last live version of this item is available in the ?????? release of the NHS Data Model and Dictionary.

Access to this version can be obtained by emailing information.standards@nhs.net with "NHS Data Model and Dictionary - Archive Request" in the email subject line.

STOP SMOKING EXCEPTION VALIDATION INDICATOR (RETIRED) renamed from **STOP SMOKING EXCEPTION VALIDATION INDICATOR**

Change to Data Element: Changed Dataset, Description, status to Retired, Name

- null
- Changed Description
- Retired STOP SMOKING EXCEPTION VALIDATION INDICATOR
- Changed Name from Data_Dictionary.Data_Field_Notes.S.Sto.STOP_SMOKING_EXCEPTION_VALIDATION_INDICATOR to Retired.Data_Dictionary.Data_Field_Notes.S.STOP_SMOKING_EXCEPTION_VALIDATION_INDICATOR

STOP SMOKING INTERVENTION SESSION TYPE REASON FOR EXCEPTION renamed from **STOP SMOKING INTERVENTION TYPE REASON FOR EXCEPTION**

Change to Data Element: Changed Dataset, Description, Name, linked Attribute

Format/length:	an200
Format/Length:	max an200
National Codes:	
Default Codes:	

Notes:

A text string for an exception reason if the success rate for the [INTERVENTION SESSION TYPE](#) is 35% or below, or 70% and above. **STOP SMOKING INTERVENTION SESSION TYPE REASON FOR EXCEPTION** is the same as attribute [PERSON OBSERVATION TEXT STRING](#).

Success rate is calculated as a percentage from the [STOP SMOKING SETTING QUIT DATE COUNT \(INTERVENTION TYPE\)](#) divided by [STOP SMOKING SUCCESSFULLY QUIT COUNT \(INTERVENTION TYPE\)](#) multiplied by 100. For the Stop Smoking Services Quarterly Data Set this is a free text string to record an exception reason. This is used if the Stop Smoking success rate for the [INTERVENTION SESSION TYPE FOR STOP SMOKING](#) is 35% or below or 70% and above.

STOP SMOKING INTERVENTION SESSION TYPE REASON FOR EXCEPTION renamed from STOP SMOKING INTERVENTION TYPE REASON FOR EXCEPTION

Change to Data Element: Changed Dataset, Description, Name, linked Attribute

STOP SMOKING INTERVENTION SESSION TYPE REASON FOR EXCEPTION

Attribute:

[PERSON OBSERVATION TEXT STRING](#)

STOP SMOKING INTERVENTION SESSION TYPE REASON FOR EXCEPTION renamed from STOP SMOKING INTERVENTION TYPE REASON FOR EXCEPTION

Change to Data Element: Changed Dataset, Description, Name, linked Attribute

- null
- Changed Description
- Changed Name from Data_Dictionary.Data_Field_Notes.S.Sto.STOP_SMOKING_INTERVENTION_TYPE_REASON_FOR_EXCEPTION to Data_Dictionary.Data_Field_Notes.S.Sto.STOP_SMOKING_INTERVENTION_SESSION_TYPE_REASON_FOR_EXCEPTION
- null

STOP SMOKING INTERVENTION SETTING TYPE REASON FOR EXCEPTION renamed from STOP SMOKING INTERVENTION SETTING REASON FOR EXCEPTION

Change to Data Element: Changed Dataset, Description, Name, linked Attribute

Format/length:	an200
Format/Length:	max an200
National Codes:	
Default Codes:	

Notes:

A text string for an exception reason if the success rate for the [INTERVENTION SETTING](#) is 35% or below, or 70% and above. [STOP SMOKING INTERVENTION SETTING TYPE REASON FOR EXCEPTION](#) is the same as attribute [PERSON OBSERVATION TEXT STRING](#).

Success rate is calculated as a percentage from the [STOP SMOKING SETTING QUIT DATE COUNT \(INTERVENTION SETTING\)](#) divided by [STOP SMOKING SUCCESSFULLY QUIT COUNT \(INTERVENTION SETTING\)](#) multiplied by 100. For the Stop Smoking Services Quarterly Data Set this is a free text string to record an exception reason. This is used if the Stop Smoking success rate for the [INTERVENTION SETTING TYPE FOR STOP SMOKING](#) is 35% or below or 70% and above.

STOP SMOKING INTERVENTION SETTING TYPE REASON FOR EXCEPTION renamed from STOP SMOKING INTERVENTION SETTING REASON FOR EXCEPTION

Change to Data Element: Changed Dataset, Description, Name, linked Attribute

STOP SMOKING INTERVENTION SETTING TYPE REASON FOR EXCEPTION

Attribute:

[PERSON OBSERVATION TEXT STRING](#)

STOP SMOKING INTERVENTION SETTING TYPE REASON FOR EXCEPTION renamed from STOP SMOKING INTERVENTION SETTING REASON FOR EXCEPTION

Change to Data Element: Changed Dataset, Description, Name, linked Attribute

- null
- Changed Description
- Changed Name from Data_Dictionary.Data_Field_Notes.S.Sto.STOP_SMOKING_INTERVENTION_SETTING_REASON_FOR_EXCEPTION to Data_Dictionary.Data_Field_Notes.S.Sto.STOP_SMOKING_INTERVENTION_SETTING_TYPE_REASON_FOR_EXCEPTION
- null

STOP SMOKING LOST TO FOLLOW-UP COUNT (AGE AND GENDER) (RETIRED)_ renamed from STOP SMOKING LOST TO FOLLOW-UP COUNT (AGE AND GENDER)

Change to Data Element: Changed Dataset, Description, status to Retired, Name

Format/length:	n6
National Codes:	
Default Codes:	

Notes: This item has been retired from the NHS Data Model and Dictionary.

This is the number of [PERSONS](#) within an [AGE BAND AT SMOKING QUIT DATE](#) and [PERSON GENDER CURRENT](#) whose non-smoking status is unknown as it has not been possible to successfully follow up the [PERSON](#) during the [REPORTING PERIOD](#). The last live version of this item is available in the ?????? release of the NHS Data Model and Dictionary.

That is the total number of [PERSONS](#) within an [AGE BAND AT SMOKING QUIT DATE](#) and [PERSON GENDER CURRENT](#) who: Access to this version can be obtained by emailing information.standards@nhs.net with "NHS Data Model and Dictionary - Archive Request" in the email subject line.

a. have a [Person Stop Smoking Episode](#)

and

b. an [OUTCOME AT 4 WEEK FOLLOW-UP](#) of National Code 3 'Non-smoking status not known/lost to follow-up'

recorded during the [REPORTING PERIOD](#).

STOP SMOKING LOST TO FOLLOW-UP COUNT (AGE AND GENDER) (RETIRED)_ renamed from STOP SMOKING LOST TO FOLLOW-UP COUNT (AGE AND GENDER)

Change to Data Element: Changed Dataset, Description, status to Retired, Name

- null
- Changed Description
- Retired STOP SMOKING LOST TO FOLLOW-UP COUNT (AGE AND GENDER)
- Changed Name from Data_Dictionary.Data_Field_Notes.S.Sto.STOP_SMOKING_LOST_TO_FOLLOW-UP_COUNT_(AGE_AND_GENDER) to Retired.Data_Dictionary.Data_Field_Notes.S.STOP_SMOKING_LOST_TO_FOLLOW-UP_COUNT_(AGE_AND_GENDER)

STOP SMOKING LOST TO FOLLOW-UP TOTAL

Change to Data Element: New Data Element

Format/Length:	max n6
National Codes:	
Default Codes:	

Notes:

STOP SMOKING LOST TO FOLLOW-UP TOTAL is the total number of [PERSONS](#) in a [REPORTING PERIOD](#) with a [Person Stop Smoking Episode](#) and an [OUTCOME AT 4 WEEK FOLLOW-UP FOR STOP SMOKING](#) of National Code 'Non-smoking status not known/lost to follow-up'.

This data element is also known by these names:

Context	Alias
plural	STOP SMOKING LOST TO FOLLOW-UP TOTALS

STOP SMOKING LOST TO FOLLOW-UP TOTAL (PREGNANT WOMEN)_ renamed from STOP SMOKING LOST TO FOLLOW-UP COUNT (PREGNANT WOMEN)

Change to Data Element: Changed Dataset, Description, Name

Format/length:	n6
Format/length:	max n6
National Codes:	
Default Codes:	

Notes:

STOP SMOKING LOST TO FOLLOW-UP TOTAL (PREGNANT WOMEN) is the number of pregnant women in a REPORTING PERIOD who have a Person Stop Smoking Episode and an OUTCOME AT 4 WEEK FOLLOW-UP FOR STOP SMOKING of National Code 'Non-smoking status not known/lost to follow-up'.

This is the number of pregnant women whose non smoking status is unknown as it has not been possible to successfully follow up the PERSON during the REPORTING PERIOD.

That is the total number of PERSONS with:

a. a PREGNANCY STATUS of 'Yes'

who

b. have a Person Stop Smoking Episode

and

c. an OUTCOME AT 4 WEEK FOLLOW-UP of National Code 3 'Non-smoking status not known/lost to follow-up'

recorded during the REPORTING PERIOD.

STOP SMOKING LOST TO FOLLOW-UP TOTAL (PREGNANT WOMEN) renamed from STOP SMOKING LOST TO FOLLOW-UP COUNT (PREGNANT WOMEN)

Change to Data Element: Changed Dataset, Description, Name

- null
- Changed Description
- Changed Name from Data_Dictionary.Data_Field_Notes.S.Sto.STOP_SMOKING_LOST_TO_FOLLOW-UP_COUNT_(PREGNANT_WOMEN) to Data_Dictionary.Data_Field_Notes.S.Sto.STOP_SMOKING_LOST_TO_FOLLOW-UP_TOTAL_(PREGNANT_WOMEN)

STOP SMOKING NOT QUIT AT 4 WEEKS COUNT (AGE AND GENDER) (RETIRED) renamed from STOP SMOKING NOT QUIT AT 4 WEEKS COUNT (AGE AND GENDER)

Change to Data Element: Changed Dataset, Description, status to Retired, Name

Format/length:	n6
National Codes:	
Default Codes:	

Notes: This item has been retired from the NHS Data Model and Dictionary.

This is the number of PERSONS within an AGE BAND AT SMOKING QUIT DATE and PERSON GENDER CURRENT who, on a self-reporting basis, had not quit smoking 4 weeks after their SMOKING QUIT DATE reported during the REPORTING PERIOD. The last live version of this item is available in the ?????? release of the NHS Data Model and Dictionary.

That is the total number of PERSONS within an AGE BAND AT SMOKING QUIT DATE and PERSON GENDER CURRENT who: Access to this version can be obtained by emailing information.standards@nhs.net with "NHS Data Model and Dictionary - Archive Request" in the email subject line.

a. have a Person Stop Smoking Episode

and

b. an OUTCOME AT 4 WEEK FOLLOW UP of National Code 2 'Not quit at 4 week follow up'

recorded during the REPORTING PERIOD.

STOP SMOKING NOT QUIT AT 4 WEEKS COUNT (AGE AND GENDER) (RETIRED) renamed from STOP SMOKING NOT QUIT AT 4 WEEKS COUNT (AGE AND GENDER)

Change to Data Element: Changed Dataset, Description, status to Retired, Name

- null
- Changed Description

- Retired STOP SMOKING NOT QUIT AT 4 WEEKS COUNT (AGE AND GENDER)
- Changed Name from Data_Dictionary.Data_Field_Notes.S.Sto.STOP_SMOKING_NOT_QUIT_AT_4_WEEKS_COUNT_(AGE_AND_GENDER) to Retired.Data_Dictionary.Data_Field_Notes.S.STOP_SMOKING_NOT_QUIT_AT_4_WEEKS_COUNT_(AGE_AND_GENDER)

STOP SMOKING NOT QUIT AT 4 WEEKS COUNT (PREGNANT WOMEN) (RETIRED)_renamed from STOP SMOKING NOT QUIT AT 4 WEEKS COUNT (PREGNANT WOMEN)

Change to Data Element: Changed Dataset, Description, status to Retired, Name

Format/length:	n6
National Codes:	
Default Codes:	

Notes: This item has been retired from the NHS Data Model and Dictionary.

This is the number of pregnant women who, on a self reporting basis, had not quit smoking 4 weeks after their [SMOKING_QUIT_DATE](#) reported during the [REPORTING_PERIOD](#). The last live version of this item is available in the ?????? release of the NHS Data Model and Dictionary.

That is the total number of [PERSONS](#) with: Access to this version can be obtained by emailing information.standards@nhs.net with "NHS Data Model and Dictionary - Archive Request" in the email subject line.

a. a [PREGNANCY STATUS](#) of 'Yes'

who

b. have a [Person Stop Smoking Episode](#)

and

c. an [OUTCOME AT 4 WEEK FOLLOW UP](#) of National Code 2 'Not quit at 4 week follow-up'

recorded during the [REPORTING_PERIOD](#).

STOP SMOKING NOT QUIT AT 4 WEEKS COUNT (PREGNANT WOMEN) (RETIRED)_renamed from STOP SMOKING NOT QUIT AT 4 WEEKS COUNT (PREGNANT WOMEN)

Change to Data Element: Changed Dataset, Description, status to Retired, Name

- null
- Changed Description
- Retired STOP SMOKING NOT QUIT AT 4 WEEKS COUNT (PREGNANT WOMEN)
- Changed Name from Data_Dictionary.Data_Field_Notes.S.Sto.STOP_SMOKING_NOT_QUIT_AT_4_WEEKS_COUNT_(PREGNANT_WOMEN) to Retired.Data_Dictionary.Data_Field_Notes.S.STOP_SMOKING_NOT_QUIT_AT_4_WEEKS_COUNT_(PREGNANT_WOMEN)

STOP SMOKING NOT QUIT TOTAL

Change to Data Element: New Data Element

Format/Length:	max n6
National Codes:	
Default Codes:	

Notes:

STOP SMOKING NOT QUIT TOTAL is the number of PERSONS in a REPORTING PERIOD with a Person Stop Smoking Episode and an OUTCOME AT 4 WEEK FOLLOW-UP FOR STOP SMOKING of National Code 'Not quit at 4 week follow-up'.

This data element is also known by these names:

Context	Alias
plural	STOP SMOKING NOT QUIT TOTALS

STOP SMOKING NOT QUIT TOTAL (PREGNANT WOMEN)

Change to Data Element: New Data Element

Format/length:	max n6
National Codes:	
Default Codes:	

Notes:

STOP SMOKING NOT QUIT TOTAL (PREGNANT WOMEN) is the number of pregnant women in a REPORTING PERIOD who have a Person Stop Smoking Episode and an OUTCOME AT 4 WEEK FOLLOW-UP FOR STOP SMOKING of National Code 'Not quit at 4 week follow-up'.

This data element is also known by these names:

Context	Alias
plural	STOP SMOKING NOT QUIT TOTALS (PREGNANT WOMEN)

STOP SMOKING QUIT CONFIRMED COUNT (AGE AND GENDER) (RETIRED) renamed from STOP SMOKING QUIT CONFIRMED COUNT (AGE AND GENDER)

Change to Data Element: Changed Dataset, Description, status to Retired, Name

Format/length:	n6
National Codes:	
Default Codes:	

Notes: This item has been retired from the NHS Data Model and Dictionary.

This is the number of PERSONS within an AGE BAND AT SMOKING QUIT DATE and PERSON GENDER CURRENT who have been confirmed as having successfully quit smoking 4 weeks after their SMOKING QUIT DATE reported during the REPORTING PERIOD. The last live version of this item is available in the ?????? release of the NHS Data Model and Dictionary.

That is the total number of PERSONS within an AGE BAND AT SMOKING QUIT DATE and PERSON GENDER CURRENT who: Access to this version can be obtained by emailing information.standards@nhs.net with "NHS Data Model and Dictionary - Archive Request" in the email subject line.

a. have a Person Stop Smoking Episode

and

b. an OUTCOME AT 4 WEEK FOLLOW UP of 'Successfully quit at 4 week follow up'

and

c. a NON SMOKING CONFIRMATION STATUS AT 4 WEEKS of 'Non-smoking status confirmed by CO validation'

recorded during the REPORTING PERIOD.

STOP SMOKING QUIT CONFIRMED COUNT (AGE AND GENDER) (RETIRED) renamed from STOP SMOKING QUIT CONFIRMED COUNT (AGE AND GENDER)

Change to Data Element: Changed Dataset, Description, status to Retired, Name

- null
- Changed Description
- Retired STOP SMOKING QUIT CONFIRMED COUNT (AGE AND GENDER)
- Changed Name from Data_Dictionary.Data_Field_Notes.S.Sto.STOP_SMOKING_QUIT_CONFIRMED_COUNT_(AGE_AND_GENDER) to Retired.Data_Dictionary.Data_Field_Notes.S.STOP_SMOKING_QUIT_CONFIRMED_COUNT_(AGE_AND_GENDER)

STOP SMOKING SERVICE CUMULATIVE SPEND

Change to Data Element: New Data Element

Format/length:	max n8
National Codes:	
Default Codes:	

Notes:

STOP SMOKING SERVICE CUMULATIVE SPEND is the same as attribute FINANCIAL AMOUNT, where the FINANCIAL ALLOCATION OR SPEND TYPE FOR STOP SMOKING is National Code 'Cumulative spend for the financial year (excluding pharmacotherapies)'.

For guidance on how to calculate this, see the NHS Digital website at: NHS Stop Smoking Services Guidance Part 2 2016-17.

This data element is also known by these names:

Context	Alias
plural	STOP SMOKING SERVICE CUMULATIVE SPENDS

STOP SMOKING SERVICE CUMULATIVE SPEND

Change to Data Element: New Data Element

STOP SMOKING SERVICE CUMULATIVE SPEND

Attribute:

FINANCIAL AMOUNT

STOP SMOKING SERVICE CUMULATIVE TOTAL SPEND (RETIRED), renamed from STOP SMOKING SERVICE CUMULATIVE TOTAL SPEND

Change to Data Element: Changed Dataset, Description, status to Retired, Name

Format/length:	n8
National Codes:	
Default Codes:	

Notes:

The FINANCIAL AMOUNT for the FINANCIAL ALLOCATION OR SPEND TYPE of 'Cumulative total spend' for a Stop Smoking Service to the nearest pound. That is the cumulative total spend at the end of the REPORTING PERIOD for the current financial year to date. This item has been retired from the NHS Data Model and Dictionary.

The last live version of this item is available in the ?????? release of the NHS Data Model and Dictionary.

Access to this version can be obtained by emailing information.standards@nhs.net with "NHS Data Model and Dictionary - Archive Request" in the email subject line.

STOP SMOKING SERVICE CUMULATIVE TOTAL SPEND (RETIRED), renamed from STOP SMOKING SERVICE CUMULATIVE TOTAL SPEND

Change to Data Element: Changed Dataset, Description, status to Retired, Name

- null
- Changed Description
- Retired STOP SMOKING SERVICE CUMULATIVE TOTAL SPEND
- Changed Name from Data_Dictionary.Data_Field_Notes.S.Sto.STOP_SMOKING_SERVICE_CUMULATIVE_TOTAL_SPEND to Retired.Data_Dictionary.Data_Field_Notes.S.STOP_SMOKING_SERVICE_CUMULATIVE_TOTAL_SPEND

STOP SMOKING SERVICE LOCAL AUTHORITY FINANCIAL ALLOCATION

Change to Data Element: New Data Element

Format/length:	max n8
National Codes:	
Default Codes:	

Notes:

STOP SMOKING SERVICE LOCAL AUTHORITY FINANCIAL ALLOCATION is the same as attribute FINANCIAL AMOUNT, where the FINANCIAL ALLOCATION OR SPEND TYPE FOR STOP SMOKING is National Code 'Total financial allocation to Local Authorities for the financial year (excluding pharmacotherapies)'.

For guidance on how to calculate this, see the NHS Digital website at: NHS Stop Smoking Services Guidance Part 2 2016-17.

This data element is also known by these names:

--

Context	Alias
plural	STOP SMOKING SERVICE LOCAL AUTHORITY FINANCIAL ALLOCATIONS

STOP SMOKING SERVICE LOCAL AUTHORITY FINANCIAL ALLOCATION

Change to Data Element: New Data Element

STOP SMOKING SERVICE LOCAL AUTHORITY FINANCIAL ALLOCATION

Attribute:

FINANCIAL AMOUNT

STOP SMOKING SERVICE OTHER FINANCIAL ALLOCATION

Change to Data Element: Changed Dataset, Description, linked Attribute

Format/length:	n8
Format/length:	max n8
National Codes:	
Default Codes:	

Notes:

This is the [FINANCIAL AMOUNT](#) for the [FINANCIAL ALLOCATION OR SPEND TYPE](#) of 'Other financial allocation including any underspend carried over from a previous REPORTING PERIOD' for a [Stop Smoking Service](#) to the nearest pound within the [REPORTING PERIOD](#). STOP SMOKING SERVICE OTHER FINANCIAL ALLOCATION is the same as attribute [FINANCIAL AMOUNT](#), where the [FINANCIAL ALLOCATION OR SPEND TYPE FOR STOP SMOKING](#) is National Code 'Other financial allocation including any underspend carried over from the previous financial year'.

For guidance on how to calculate this, see the [NHS Digital website at: NHS Stop Smoking Services Guidance Part 2 2016-17](#).

STOP SMOKING SERVICE OTHER FINANCIAL ALLOCATION

Change to Data Element: Changed Dataset, Description, linked Attribute

STOP SMOKING SERVICE OTHER FINANCIAL ALLOCATION

Attribute:

FINANCIAL AMOUNT

STOP SMOKING SERVICE PCT FINANCIAL ALLOCATION (RETIRED), renamed from **STOP SMOKING SERVICE PCT FINANCIAL ALLOCATION**

Change to Data Element: Changed Dataset, Description, status to Retired, Name

Format/length:	n8
National Codes:	
Default Codes:	

Notes:

This is the [FINANCIAL AMOUNT](#) for the [FINANCIAL ALLOCATION OR SPEND TYPE](#) of 'Financial allocation to Primary Care Trusts for the REPORTING PERIOD' for a [Stop Smoking Service](#) to the nearest pound within the [REPORTING PERIOD](#). **This item has been retired from the NHS Data Model and Dictionary.**

The last live version of this item is available in the ?????? release of the NHS Data Model and Dictionary.

Access to this version can be obtained by emailing information.standards@nhs.net with "NHS Data Model and Dictionary - Archive Request" in the email subject line.

STOP SMOKING SERVICE PCT FINANCIAL ALLOCATION (RETIRED), renamed from **STOP SMOKING SERVICE PCT FINANCIAL ALLOCATION**

Change to Data Element: Changed Dataset, Description, status to Retired, Name

- null
- Changed Description
- Retired STOP SMOKING SERVICE PCT FINANCIAL ALLOCATION

- Changed Name from *Data_Dictionary.Data_Field_Notes.S.Sto.STOP_SMOKING_SERVICE_PCT_FINANCIAL_ALLOCATION* to *Retired.Data_Dictionary.Data_Field_Notes.S.STOP_SMOKING_SERVICE_PCT_FINANCIAL_ALLOCATION*

STOP SMOKING SERVICE PHARMACOTHERAPY SPEND

Change to Data Element: New Data Element

Format/length:	max n8
National Codes:	
Default Codes:	

Notes:

STOP SMOKING SERVICE PHARMACOTHERAPY SPEND is the same as attribute *FINANCIAL AMOUNT*, where the *FINANCIAL ALLOCATION OR SPEND TYPE FOR STOP SMOKING* is National Code 'Total cost of pharmacotherapies for the financial year'.

For guidance on how to calculate this, see the *NHS Digital* website at: *NHS Stop Smoking Services Guidance Part 2 2016-17*.

This data element is also known by these names:

Context	Alias
plural	STOP SMOKING SERVICE PHARMACOTHERAPY TOTAL SPENDS

STOP SMOKING SERVICE PHARMACOTHERAPY SPEND

Change to Data Element: New Data Element

STOP SMOKING SERVICE PHARMACOTHERAPY SPEND

Attribute:

<i>FINANCIAL AMOUNT</i>

STOP SMOKING SETTING QUIT DATE COUNT (AGE AND GENDER) (RETIRED) renamed from *STOP SMOKING SETTING QUIT DATE COUNT (AGE AND GENDER)*

Change to Data Element: Changed Dataset, Description, status to Retired, Name

Format/length:	n6
National Codes:	
Default Codes:	

Notes: *This item has been retired from the NHS Data Model and Dictionary.*

This is the total number of PERSONS within an AGE BAND AT SMOKING QUIT DATE and PERSON GENDER CURRENT who: The last live version of this item is available in the ?????? release of the NHS Data Model and Dictionary.

- a. ~~have a Person Stop Smoking Episode~~ Access to this version can be obtained by emailing information.standards@nhs.net with "NHS Data Model and Dictionary - Archive Request" in the email subject line.

and

- b. a ~~SMOKING QUIT DATE~~

within the ~~REPORTING PERIOD~~.

STOP SMOKING SETTING QUIT DATE COUNT (AGE AND GENDER) (RETIRED) renamed from *STOP SMOKING SETTING QUIT DATE COUNT (AGE AND GENDER)*

Change to Data Element: Changed Dataset, Description, status to Retired, Name

- null
- Changed Description
- Retired *STOP SMOKING SETTING QUIT DATE COUNT (AGE AND GENDER)*
- Changed Name from *Data_Dictionary.Data_Field_Notes.S.Sto.STOP_SMOKING_SETTING_QUIT_DATE_COUNT (AGE_AND_GENDER)* to *Retired.Data_Dictionary.Data_Field_Notes.S.STOP_SMOKING_SETTING_QUIT_DATE_COUNT (AGE_AND_GENDER)*

STOP SMOKING SETTING QUIT DATE COUNT (AID) (RETIRED) renamed from STOP SMOKING SETTING QUIT DATE COUNT (AID)

Change to Data Element: Changed Dataset, Description, status to Retired, Name

Format/length:	n6
National Codes:	
Default Codes:	

Notes: This item has been retired from the NHS Data Model and Dictionary.

This is the total number of PERSONS using a particular PHARMACOTHERAPY STOP SMOKING AID RECEIVED who: **The last live version of this item is available in the ?????? release of the NHS Data Model and Dictionary.**

a. have a Person Stop Smoking Episode Access to this version can be obtained by emailing information.standards@nhs.net with "NHS Data Model and Dictionary - Archive Request" in the email subject line.

and

b. a SMOKING QUIT DATE

within the REPORTING PERIOD.

STOP SMOKING SETTING QUIT DATE COUNT (AID) (RETIRED) renamed from STOP SMOKING SETTING QUIT DATE COUNT (AID)

Change to Data Element: Changed Dataset, Description, status to Retired, Name

- null
- Changed Description
- Retired STOP SMOKING SETTING QUIT DATE COUNT (AID)
- Changed Name from Data_Dictionary.Data_Field_Notes.S.Sto.STOP_SMOKING_SETTING_QUIT_DATE_COUNT_(AID) to Retired.Data_Dictionary.Data_Field_Notes.S.STOP_SMOKING_SETTING_QUIT_DATE_COUNT_(AID)

STOP SMOKING SETTING QUIT DATE COUNT (ETHNIC CATEGORY AND GENDER) (RETIRED) renamed from STOP SMOKING SETTING QUIT DATE COUNT (ETHNIC CATEGORY AND GENDER)

Change to Data Element: Changed Dataset, Description, status to Retired, Name

Format/length:	n6
National Codes:	
Default Codes:	

Notes: This item has been retired from the NHS Data Model and Dictionary.

This is the total number of PERSONS with a particular ETHNIC CATEGORY and PERSON GENDER CURRENT who: **The last live version of this item is available in the ?????? release of the NHS Data Model and Dictionary.**

a. have a Person Stop Smoking Episode Access to this version can be obtained by emailing information.standards@nhs.net with "NHS Data Model and Dictionary - Archive Request" in the email subject line.

and

b. a SMOKING QUIT DATE

within the REPORTING PERIOD.

STOP SMOKING SETTING QUIT DATE COUNT (ETHNIC CATEGORY AND GENDER) (RETIRED) renamed from STOP SMOKING SETTING QUIT DATE COUNT (ETHNIC CATEGORY AND GENDER)

Change to Data Element: Changed Dataset, Description, status to Retired, Name

- null
- Changed Description
- Retired STOP SMOKING SETTING QUIT DATE COUNT (ETHNIC CATEGORY AND GENDER)
- Changed Name from Data_Dictionary.Data_Field_Notes.S.Sto.STOP_SMOKING_SETTING_QUIT_DATE_COUNT_(ETHNIC_CATEGORY_AND_GENDER) to

Retired.Data_Dictionary.Data_Field_Notes.S.STOP_SMOKING_SETTING_QUIT_DATE_COUNT_(ETHNIC_CATEGORY_AND_GENDER)

STOP SMOKING SETTING QUIT DATE COUNT (INTERVENTION SETTING) (RETIRED)_renamed from STOP SMOKING SETTING QUIT DATE COUNT (INTERVENTION SETTING)

Change to Data Element: Changed Dataset, Description, status to Retired, Name

Format/length:	n6
National Codes:	
Default Codes:	

Notes:This item has been retired from the NHS Data Model and Dictionary.

This is the total number of PERSONS treated within a particular INTERVENTION SETTING (STOP SMOKING) who: The last live version of this item is available in the ?????? release of the NHS Data Model and Dictionary.

a. have a Person Stop Smoking Episode Access to this version can be obtained by emailing information.standards@nhs.net with "NHS Data Model and Dictionary - Archive Request" in the email subject line.

and

b. a SMOKING QUIT DATE

within the REPORTING PERIOD.

STOP SMOKING SETTING QUIT DATE COUNT (INTERVENTION SETTING) (RETIRED)_renamed from STOP SMOKING SETTING QUIT DATE COUNT (INTERVENTION SETTING)

Change to Data Element: Changed Dataset, Description, status to Retired, Name

- null
- Changed Description
- Retired STOP SMOKING SETTING QUIT DATE COUNT (INTERVENTION SETTING)
- Changed Name from Data_Dictionary.Data_Field_Notes.S.Sto.STOP_SMOKING_SETTING_QUIT_DATE_COUNT_(INTERVENTION_SETTING) to Retired.Data_Dictionary.Data_Field_Notes.S.STOP_SMOKING_SETTING_QUIT_DATE_COUNT_(INTERVENTION_SETTING)

STOP SMOKING SETTING QUIT DATE COUNT (INTERVENTION TYPE) (RETIRED)_renamed from STOP SMOKING SETTING QUIT DATE COUNT (INTERVENTION TYPE)

Change to Data Element: Changed Dataset, Description, status to Retired, Name

Format/length:	n6
National Codes:	
Default Codes:	

Notes:This item has been retired from the NHS Data Model and Dictionary.

This is the total number of PERSONS with a particular INTERVENTION SESSION TYPE (STOP SMOKING) who: The last live version of this item is available in the ?????? release of the NHS Data Model and Dictionary.

a. have a Person Stop Smoking Episode Access to this version can be obtained by emailing information.standards@nhs.net with "NHS Data Model and Dictionary - Archive Request" in the email subject line.

and

b. a SMOKING QUIT DATE

within the REPORTING PERIOD.

STOP SMOKING SETTING QUIT DATE COUNT (INTERVENTION TYPE) (RETIRED)_renamed from STOP SMOKING SETTING QUIT DATE COUNT (INTERVENTION TYPE)

Change to Data Element: Changed Dataset, Description, status to Retired, Name

- null
- Changed Description
- Retired STOP SMOKING SETTING QUIT DATE COUNT (INTERVENTION TYPE)
- Changed Name from Data_Dictionary.Data_Field_Notes.S.Sto.STOP_SMOKING_SETTING_QUIT_DATE_COUNT_(INTERVENTION_TYPE) to Retired.Data_Dictionary.Data_Field_Notes.S.STOP_SMOKING_SETTING_QUIT_DATE_COUNT_(INTERVENTION_TYPE)

STOP SMOKING SETTING QUIT DATE COUNT (PREGNANT WOMEN) (RETIRED)_ renamed from STOP SMOKING SETTING QUIT DATE COUNT (PREGNANT WOMEN)

Change to Data Element: Changed Dataset, Description, status to Retired, Name

Format/length:	n6
National Codes:	
Default Codes:	

Notes: This item has been retired from the NHS Data Model and Dictionary.

This is the total number of PERSONS with: The last live version of this item is available in the ?????? release of the NHS Data Model and Dictionary.

a. a PREGNANCY STATUS of 'Yes'. Access to this version can be obtained by emailing information.standards@nhs.net with "NHS Data Model and Dictionary - Archive Request" in the email subject line.

who

b. have a Person Stop Smoking Episode

and

c. a SMOKING QUIT DATE

within the REPORTING PERIOD.

STOP SMOKING SETTING QUIT DATE COUNT (PREGNANT WOMEN) (RETIRED)_ renamed from STOP SMOKING SETTING QUIT DATE COUNT (PREGNANT WOMEN)

Change to Data Element: Changed Dataset, Description, status to Retired, Name

- null
- Changed Description
- Retired STOP SMOKING SETTING QUIT DATE COUNT (PREGNANT WOMEN)
- Changed Name from Data_Dictionary.Data_Field_Notes.S.Sto.STOP_SMOKING_SETTING_QUIT_DATE_COUNT_(PREGNANT_WOMEN) to Retired.Data_Dictionary.Data_Field_Notes.S.STOP_SMOKING_SETTING_QUIT_DATE_COUNT_(PREGNANT_WOMEN)

STOP SMOKING SETTING QUIT DATE COUNT (SOCIO ECONOMIC CLASSIFICATION) (RETIRED)_ renamed from STOP SMOKING SETTING QUIT DATE COUNT (SOCIO ECONOMIC CLASSIFICATION)

Change to Data Element: Changed Dataset, Description, status to Retired, Name

Format/length:	n6
National Codes:	
Default Codes:	

Notes: This item has been retired from the NHS Data Model and Dictionary.

This is the total number of PERSONS within a SOCIO-ECONOMIC CLASSIFICATION who: The last live version of this item is available in the ?????? release of the NHS Data Model and Dictionary.

a. have a Person Stop Smoking Episode. Access to this version can be obtained by emailing information.standards@nhs.net with "NHS Data Model and Dictionary - Archive Request" in the email subject line.

and

b. a SMOKING QUIT DATE

within the REPORTING PERIOD.

STOP SMOKING SETTING QUIT DATE COUNT (SOCIO ECONOMIC CLASSIFICATION) (RETIRED), renamed from **STOP SMOKING SETTING QUIT DATE COUNT (SOCIO ECONOMIC CLASSIFICATION)**

Change to Data Element: Changed Dataset, Description, status to Retired, Name

- null
- Changed Description
- Retired **STOP SMOKING SETTING QUIT DATE COUNT (SOCIO ECONOMIC CLASSIFICATION)**
- Changed Name from *Data_Dictionary.Data_Field_Notes.S.Sto.STOP_SMOKING_SETTING_QUIT_DATE_COUNT_(SOCIO_ECONOMIC_CLASSIFICATION)* to *Retired.Data_Dictionary.Data_Field_Notes.S.STOP_SMOKING_SETTING_QUIT_DATE_COUNT_(SOCIO_ECONOMIC_CLASSIFICATION)*

STOP SMOKING SETTING QUIT DATE TOTAL

Change to Data Element: New Data Element

Format/Length:	max n6
National Codes:	
Default Codes:	

Notes:

STOP SMOKING SETTING QUIT DATE TOTAL is the number of **PERSONS** in the **REPORTING PERIOD** with a **Person Stop Smoking Episode** and an **Intended Smoking Quit Date**.

This data element is also known by these names:

Context	Alias
plural	STOP SMOKING SETTING QUIT DATE TOTALS

STOP SMOKING SETTING QUIT DATE TOTAL (FREE PRESCRIPTION), renamed from **STOP SMOKING SETTING QUIT DATE COUNT (FREE PRESCRIPTION)**

Change to Data Element: Changed Dataset, Description, Name

Format/length:	n6
Format/Length:	max n6
National Codes:	
Default Codes:	

Notes:

STOP SMOKING SETTING QUIT DATE TOTAL (FREE PRESCRIPTION) is the number of **PERSONS** in the **REPORTING PERIOD** with:

That is the total number of **PERSONS** with:

- a. a **FREE PRESCRIPTIONS INDICATOR** of National Code 01 'Eligible for free prescriptions'

who

- b. have a **Person Stop Smoking Episode**

and

- c. a **SMOKING QUIT DATE**

within the **REPORTING PERIOD**.

- a **Person Stop Smoking Episode** and

- an **Intended Smoking Quit Date** and

- a **FREE PRESCRIPTIONS INDICATOR** of National Code 'Yes - PERSON is eligible for free PRESCRIPTIONS'
-

STOP SMOKING SETTING QUIT DATE TOTAL (FREE PRESCRIPTION), renamed from STOP SMOKING SETTING QUIT DATE COUNT (FREE PRESCRIPTION)

Change to Data Element: Changed Dataset, Description, Name

- null
- Changed Description
- Changed Name from Data_Dictionary.Data_Field_Notes.S.Sto.STOP_SMOKING_SETTING_QUIT_DATE_COUNT_(FREE_PRESCRIPTION) to Data_Dictionary.Data_Field_Notes.S.Sto.STOP_SMOKING_SETTING_QUIT_DATE_TOTAL_(FREE_PRESCRIPTION)

STOP SMOKING SUCCESSFULLY QUIT CARBON MONOXIDE VALIDATION TOTAL

Change to Data Element: New Data Element

Format/Length:	max n6
National Codes:	
Default Codes:	

Notes:

STOP SMOKING SUCCESSFULLY QUIT CARBON MONOXIDE VALIDATION TOTAL is the number of **PERSONS** in the **REPORTING PERIOD** with:

- a **Person Stop Smoking Episode** and
- a **NON SMOKING CONFIRMATION STATUS INDICATOR AT 4 WEEKS** of National Code 'Yes - non-smoking status confirmed by carbon monoxide validation'.

This data element is also known by these names:

Context	Alias
plural	STOP SMOKING SUCCESSFULLY QUIT CARBON MONOXIDE VALIDATION TOTALS

STOP SMOKING SUCCESSFULLY QUIT CARBON MONOXIDE VALIDATION TOTAL (PREGNANT WOMEN), renamed from STOP SMOKING QUIT CONFIRMED COUNT (PREGNANT WOMEN)

Change to Data Element: Changed Dataset, Description, Name

Format/length:	n6
Format/Length:	max n6
National Codes:	
Default Codes:	

Notes:

STOP SMOKING SUCCESSFULLY QUIT CARBON MONOXIDE VALIDATION TOTAL (PREGNANT WOMEN) is the number of pregnant women in the **REPORTING PERIOD** with:

This is the number of pregnant women who have been confirmed as having successfully quit smoking 4 weeks after their **SMOKING QUIT DATE** reported during the **REPORTING PERIOD**.

That is the total number of **PERSONS** with:

- a. a **PREGNANCY STATUS** of 'Yes'

who

- b. have a **Person Stop Smoking Episode**

and

- c. an **OUTCOME AT 4 WEEK FOLLOW UP** of 'Successfully quit at 4 week follow up'

and

- d. a **NON SMOKING CONFIRMATION STATUS AT 4 WEEKS** of 'Non-smoking status confirmed by CO validation'

recorded during the **REPORTING PERIOD**.

•

a [Person Stop Smoking Episode](#) and

a [NON SMOKING CONFIRMATION STATUS INDICATOR AT 4 WEEKS](#) of National Code 'Yes - non-smoking status confirmed by carbon monoxide validation'.

STOP SMOKING SUCCESSFULLY QUIT CARBON MONOXIDE VALIDATION TOTAL (PREGNANT WOMEN)_renamed from **STOP SMOKING QUIT CONFIRMED COUNT (PREGNANT WOMEN)**

Change to Data Element: Changed Dataset, Description, Name

- null
- Changed Description
- Changed Name from Data_Dictionary.Data_Field_Notes.S.Sto.STOP_SMOKING_QUIT_CONFIRMED_COUNT_(PREGNANT_WOMEN) to Data_Dictionary.Data_Field_Notes.S.Sto.STOP_SMOKING_SUCCESSFULLY_QUIT_CARBON_MONOXIDE_VALIDATION_TOTAL_(PREGNANT_WOMEN)

STOP SMOKING SUCCESSFULLY QUIT COUNT (AGE AND GENDER) (RETIRED)_renamed from **STOP SMOKING SUCCESSFULLY QUIT COUNT (AGE AND GENDER)**

Change to Data Element: Changed Dataset, Description, status to Retired, Name

Format/length:	n6
National Codes:	
Default Codes:	

Notes:[This item has been retired from the NHS Data Model and Dictionary.](#)

This is the number of [PERSONS](#) within an [AGE BAND AT SMOKING QUIT DATE](#) and [PERSON GENDER CURRENT](#) who, on a self-reporting basis, successfully quit smoking 4 weeks after their [SMOKING QUIT DATE](#), reported during the [REPORTING PERIOD](#). [The last live version of this item is available in the ?????? release of the NHS Data Model and Dictionary.](#)

That is the total number of [PERSONS](#) within an [AGE BAND AT SMOKING QUIT DATE](#) and [PERSON GENDER CURRENT](#) who: [Access to this version can be obtained by emailing \[information.standards@nhs.net\]\(mailto:information.standards@nhs.net\) with "NHS Data Model and Dictionary - Archive Request" in the email subject line.](#)

a. have a [Person Stop Smoking Episode](#)

and

b. an [OUTCOME AT 4 WEEK FOLLOW UP](#) of 'Successfully quit at 4 week follow up (self report)'

recorded during the [REPORTING PERIOD](#).

STOP SMOKING SUCCESSFULLY QUIT COUNT (AGE AND GENDER) (RETIRED)_renamed from **STOP SMOKING SUCCESSFULLY QUIT COUNT (AGE AND GENDER)**

Change to Data Element: Changed Dataset, Description, status to Retired, Name

- null
- Changed Description
- Retired STOP SMOKING SUCCESSFULLY QUIT COUNT (AGE AND GENDER)
- Changed Name from Data_Dictionary.Data_Field_Notes.S.Sto.STOP_SMOKING_SUCCESSFULLY_QUIT_COUNT_(AGE_AND_GENDER) to Retired.Data_Dictionary.Data_Field_Notes.S.STOP_SMOKING_SUCCESSFULLY_QUIT_COUNT_(AGE_AND_GENDER)

STOP SMOKING SUCCESSFULLY QUIT COUNT (AID) (RETIRED)_renamed from **STOP SMOKING SUCCESSFULLY QUIT COUNT (AID)**

Change to Data Element: Changed Dataset, Description, status to Retired, Name

Format/length:	n6
National Codes:	
Default Codes:	

Notes:[This item has been retired from the NHS Data Model and Dictionary.](#)

This is the number of PERSONS who has had a particular PHARMACOTHERAPY_STOP_SMOKING_AID_RECEIVED who, on a self-reporting basis, successfully quit smoking 4 weeks after their SMOKING_QUIT_DATE, reported during the REPORTING_PERIOD. The last live version of this item is available in the ?????? release of the NHS Data Model and Dictionary.

That is the total number of PERSONS with a particular PHARMACOTHERAPY_STOP_SMOKING_AID_RECEIVED who: Access to this version can be obtained by emailing information.standards@nhs.net with "NHS Data Model and Dictionary - Archive Request" in the email subject line.

a. have a Person Stop Smoking Episode

and

b. an OUTCOME_AT_4_WEEK_FOLLOW_UP of 'Successfully quit at 4 week follow up (self-report)'

recorded during the REPORTING_PERIOD.

STOP SMOKING SUCCESSFULLY QUIT COUNT (AID) (RETIRED) renamed from STOP SMOKING SUCCESSFULLY QUIT COUNT (AID)

Change to Data Element: Changed Dataset, Description, status to Retired, Name

- null
- Changed Description
- Retired STOP SMOKING SUCCESSFULLY QUIT COUNT (AID)
- Changed Name from Data_Dictionary.Data_Field_Notes.S.Sto.STOP_SMOKING_SUCCESSFULLY_QUIT_COUNT_(AID) to Retired.Data_Dictionary.Data_Field_Notes.S.STOP_SMOKING_SUCCESSFULLY_QUIT_COUNT_(AID)

STOP SMOKING SUCCESSFULLY QUIT COUNT (ETHNIC CATEGORY AND GENDER) (RETIRED) renamed from STOP SMOKING SUCCESSFULLY QUIT COUNT (ETHNIC CATEGORY AND GENDER)

Change to Data Element: Changed Dataset, Description, status to Retired, Name

Format/length:	n6
National Codes:	
Default Codes:	

Notes: This item has been retired from the NHS Data Model and Dictionary.

This is the number of PERSONS within an ETHNIC_CATEGORY and PERSON_GENDER_CURRENT who, on a self-reporting basis, successfully quit smoking 4 weeks after their SMOKING_QUIT_DATE, reported during the REPORTING_PERIOD. The last live version of this item is available in the ?????? release of the NHS Data Model and Dictionary.

That is the total number of PERSONS within an ETHNIC_CATEGORY and PERSON_GENDER_CURRENT who: Access to this version can be obtained by emailing information.standards@nhs.net with "NHS Data Model and Dictionary - Archive Request" in the email subject line.

a. have a Person Stop Smoking Episode

and

b. an OUTCOME_AT_4_WEEK_FOLLOW_UP of 'Successfully quit at 4 week follow up (self-report)'

recorded during the REPORTING_PERIOD.

STOP SMOKING SUCCESSFULLY QUIT COUNT (ETHNIC CATEGORY AND GENDER) (RETIRED) renamed from STOP SMOKING SUCCESSFULLY QUIT COUNT (ETHNIC CATEGORY AND GENDER)

Change to Data Element: Changed Dataset, Description, status to Retired, Name

- null
- Changed Description
- Retired STOP SMOKING SUCCESSFULLY QUIT COUNT (ETHNIC CATEGORY AND GENDER)
- Changed Name from Data_Dictionary.Data_Field_Notes.S.Sto.STOP_SMOKING_SUCCESSFULLY_QUIT_COUNT_(ETHNIC_CATEGORY_AND_GENDER) to Retired.Data_Dictionary.Data_Field_Notes.S.STOP_SMOKING_SUCCESSFULLY_QUIT_COUNT_(ETHNIC_CATEGORY_AND_GENDER)

STOP SMOKING SUCCESSFULLY QUIT COUNT (INTERVENTION SETTING) (RETIRED)_renamed from STOP SMOKING SUCCESSFULLY QUIT COUNT (INTERVENTION SETTING)

Change to Data Element: Changed Dataset, Description, status to Retired, Name

Format/length:	n6
National Codes:	
Default Codes:	

Notes:This item has been retired from the NHS Data Model and Dictionary.

~~This is the number of [PERSONS](#) within a particular [INTERVENTION SETTING](#) who, on a self-reporting basis, successfully quit smoking 4 weeks after their [SMOKING QUIT DATE](#), reported during the [REPORTING PERIOD](#).The last live version of this item is available in the ?????? release of the NHS Data Model and Dictionary.~~

~~That is the total number of [PERSONS](#) within a particular [INTERVENTION SETTING](#) who:Access to this version can be obtained by emailing information.standards@nhs.net with "NHS Data Model and Dictionary - Archive Request" in the email subject line.~~

~~a. have a [Person Stop Smoking Episode](#)~~

~~and~~

~~b. an [OUTCOME AT 4 WEEK FOLLOW UP](#) of 'Successfully quit at 4 week follow up (self-report)'~~

~~recorded during the [REPORTING PERIOD](#).~~

STOP SMOKING SUCCESSFULLY QUIT COUNT (INTERVENTION SETTING) (RETIRED)_renamed from STOP SMOKING SUCCESSFULLY QUIT COUNT (INTERVENTION SETTING)

Change to Data Element: Changed Dataset, Description, status to Retired, Name

- null
- Changed Description
- Retired STOP SMOKING SUCCESSFULLY QUIT COUNT (INTERVENTION SETTING)
- Changed Name from [Data_Dictionary.Data_Field_Notes.S.Sto.STOP_SMOKING_SUCCESSFULLY_QUIT_COUNT_\(INTERVENTION_SETTING\)](#) to [Retired.Data_Dictionary.Data_Field_Notes.S.STOP_SMOKING_SUCCESSFULLY_QUIT_COUNT_\(INTERVENTION_SETTING\)](#)

STOP SMOKING SUCCESSFULLY QUIT COUNT (INTERVENTION TYPE) (RETIRED)_renamed from STOP SMOKING SUCCESSFULLY QUIT COUNT (INTERVENTION TYPE)

Change to Data Element: Changed Dataset, Description, status to Retired, Name

Format/length:	n6
National Codes:	
Default Codes:	

Notes:This item has been retired from the NHS Data Model and Dictionary.

~~This is the number of [PERSONS](#) being treated by a [INTERVENTION SESSION TYPE](#) who, on a self-reporting basis, successfully quit smoking 4 weeks after their [SMOKING QUIT DATE](#), reported during the [REPORTING PERIOD](#).The last live version of this item is available in the ?????? release of the NHS Data Model and Dictionary.~~

~~That is the total number of [PERSONS](#) being treated by an [INTERVENTION SESSION TYPE](#) who:Access to this version can be obtained by emailing information.standards@nhs.net with "NHS Data Model and Dictionary - Archive Request" in the email subject line.~~

~~a. have a [Person Stop Smoking Episode](#)~~

~~and~~

~~b. an [OUTCOME AT 4 WEEK FOLLOW UP](#) of 'Successfully quit at 4 week follow up (self-report)'~~

~~recorded during the [REPORTING PERIOD](#).~~

STOP SMOKING SUCCESSFULLY QUIT COUNT (INTERVENTION TYPE) (RETIRED)_ renamed from STOP SMOKING SUCCESSFULLY QUIT COUNT (INTERVENTION TYPE)

Change to Data Element: Changed Dataset, Description, status to Retired, Name

- null
- Changed Description
- Retired STOP SMOKING SUCCESSFULLY QUIT COUNT (INTERVENTION TYPE)
- Changed Name from Data_Dictionary.Data_Field_Notes.S.Sto.STOP_SMOKING_SUCCESSFULLY_QUIT_COUNT_(INTERVENTION_TYPE) to Retired.Data_Dictionary.Data_Field_Notes.S.STOP_SMOKING_SUCCESSFULLY_QUIT_COUNT_(INTERVENTION_TYPE)

STOP SMOKING SUCCESSFULLY QUIT COUNT (SOCIO ECONOMIC CLASSIFICATION) (RETIRED)_ renamed from STOP SMOKING SUCCESSFULLY QUIT COUNT (SOCIO ECONOMIC CLASSIFICATION)

Change to Data Element: Changed Dataset, Description, status to Retired, Name

Format/length:	n6
National Codes:	
Default Codes:	

Notes: This item has been retired from the NHS Data Model and Dictionary.

This is the number of [PERSONS](#) within a particular [SOCIO-ECONOMIC CLASSIFICATION](#) who, on a self-reporting basis, successfully quit smoking 4 weeks after their [SMOKING QUIT DATE](#), reported during the [REPORTING PERIOD](#). The last live version of this item is available in the [??????](#) release of the NHS Data Model and Dictionary.

That is the number of [PERSONS](#) within a particular [SOCIO-ECONOMIC CLASSIFICATION](#) who: Access to this version can be obtained by emailing information.standards@nhs.net with "NHS Data Model and Dictionary - Archive Request" in the email subject line.

a. have a [Person Stop Smoking Episode](#)

and

b. an [OUTCOME AT 4 WEEK FOLLOW-UP](#) of 'Successfully quit at 4 week follow-up (self-report)'

recorded during the [REPORTING PERIOD](#).

STOP SMOKING SUCCESSFULLY QUIT COUNT (SOCIO ECONOMIC CLASSIFICATION) (RETIRED)_ renamed from STOP SMOKING SUCCESSFULLY QUIT COUNT (SOCIO ECONOMIC CLASSIFICATION)

Change to Data Element: Changed Dataset, Description, status to Retired, Name

- null
- Changed Description
- Retired STOP SMOKING SUCCESSFULLY QUIT COUNT (SOCIO ECONOMIC CLASSIFICATION)
- Changed Name from Data_Dictionary.Data_Field_Notes.S.Sto.STOP_SMOKING_SUCCESSFULLY_QUIT_COUNT_(SOCIO_ECONOMIC_CLASSIFICATION) to Retired.Data_Dictionary.Data_Field_Notes.S.STOP_SMOKING_SUCCESSFULLY_QUIT_COUNT_(SOCIO_ECONOMIC_CLASSIFICATION)

STOP SMOKING SUCCESSFULLY QUIT TOTAL

Change to Data Element: New Data Element

Format/Length:	max n6
National Codes:	
Default Codes:	

Notes:

[STOP SMOKING SUCCESSFULLY QUIT TOTAL](#) is the number of [PERSONS](#) in the [REPORTING PERIOD](#) with:

- a [Person Stop Smoking Episode](#) and
- an [OUTCOME AT 4 WEEK FOLLOW-UP FOR STOP SMOKING](#) of National Code 'Successfully quit at 4 week follow-up (self-report)'.

This data element is also known by these names:

Context	Alias

plural

STOP SMOKING SUCCESSFULLY QUIT TOTALS

STOP SMOKING SUCCESSFULLY QUIT TOTAL (FREE PRESCRIPTION)_ renamed from STOP SMOKING SUCCESSFULLY QUIT COUNT (FREE PRESCRIPTION)

Change to Data Element: Changed Dataset, Description, Name

Format/length:	n6
Format/Length:	max n6
National Codes:	
Default Codes:	

Notes:

STOP SMOKING SUCCESSFULLY QUIT TOTAL (FREE PRESCRIPTION) is the number of PERSONS in a REPORTING PERIOD with:

This is the number of PERSONS with a FREE PRESCRIPTIONS INDICATOR of National Code 01 'Eligible for free prescriptions' who, on a self-reporting basis, successfully quit smoking 4 weeks after their SMOKING QUIT DATE, reported during the REPORTING PERIOD.

That is the total number of PERSONS with:

a. a FREE PRESCRIPTIONS INDICATOR of National Code 01 'Eligible for free prescriptions'

who

b. have a Person Stop Smoking Episode

and

c. an OUTCOME AT 4 WEEK FOLLOW-UP of 'Successfully quit at 4 week follow-up (self-report)'

recorded during the REPORTING PERIOD.

- a Person Stop Smoking Episode and
- an OUTCOME AT 4 WEEK FOLLOW-UP FOR STOP SMOKING of National Code 'Successfully quit at 4 week follow-up (self-report)' and
- a FREE PRESCRIPTIONS INDICATOR of National Code 'Yes - PERSON is eligible for free PRESCRIPTIONS'.

STOP SMOKING SUCCESSFULLY QUIT TOTAL (FREE PRESCRIPTION)_ renamed from STOP SMOKING SUCCESSFULLY QUIT COUNT (FREE PRESCRIPTION)

Change to Data Element: Changed Dataset, Description, Name

- null
- Changed Description
- Changed Name from Data_Dictionary.Data_Field_Notes.S.Sto.STOP_SMOKING_SUCCESSFULLY_QUIT_COUNT_(FREE_PRESCRIPTION) to Data_Dictionary.Data_Field_Notes.S.Sto.STOP_SMOKING_SUCCESSFULLY_QUIT_TOTAL_(FREE_PRESCRIPTION)

STOP SMOKING SUCCESSFULLY QUIT TOTAL (PREGNANT WOMEN)_ renamed from STOP SMOKING SUCCESSFULLY QUIT COUNT (PREGNANT WOMEN)

Change to Data Element: Changed Dataset, Description, Name

Format/length:	n6
Format/Length:	max n6
National Codes:	
Default Codes:	

Notes:

STOP SMOKING SUCCESSFULLY QUIT TOTAL (PREGNANT WOMEN) is the number of pregnant women in a REPORTING PERIOD with:

This is the number of pregnant women who, on a self-reporting basis, successfully quit smoking 4 weeks after their SMOKING QUIT DATE, reported during the REPORTING PERIOD.

That is the number of PERSONS with:

a. a PREGNANCY STATUS of 'Yes'

who

b. have a Person Stop Smoking Episode

and

c. an OUTCOME AT 4 WEEK FOLLOW-UP of 'Successfully quit at 4 week follow-up (self-report)'

recorded during the REPORTING PERIOD.

•
a Person Stop Smoking Episode and

•
an OUTCOME AT 4 WEEK FOLLOW-UP FOR STOP SMOKING of National Code 'Successfully quit at 4 week follow-up (self-report)'

STOP SMOKING SUCCESSFULLY QUIT TOTAL (PREGNANT WOMEN), renamed from STOP SMOKING SUCCESSFULLY QUIT COUNT (PREGNANT WOMEN)

Change to Data Element: Changed Dataset, Description, Name

- null
- Changed Description
- Changed Name from Data_Dictionary.Data_Field_Notes.S.Sto.STOP_SMOKING_SUCCESSFULLY_QUIT_COUNT_(PREGNANT_WOMEN) to Data_Dictionary.Data_Field_Notes.S.Sto.STOP_SMOKING_SUCCESSFULLY_QUIT_TOTAL_(PREGNANT_WOMEN)

For enquiries about this Change Request, please email information.standards@nhs.net

