

Type:	Change Request
Reference:	1618
Version No:	1.0
Subject:	GUMCAD Sexually Transmitted Infection Surveillance System Data Set
Effective Date:	1 October 2018
Reason for Change:	Change to Information Standards
Publication Date:	12 June 2018

Background:

Genitourinary Medicine Clinic Activity Data Set (GUMCAD) version 2 was approved by the Information Standards Board (ISB) as ISB 0139. The epidemiology of sexually transmitted infections (STIs) in England is monitored through the GUMCADv2 data set. While GUMCADv2 has led to a major improvement in the national surveillance of sexually transmitted infections and is now an internationally unique data set used to monitor outbreaks and other public health incidents, inform sexual health policy decisions and evaluate interventions, however it remains limited by a lack of critical sexual health information. Public Health England (PHE) has therefore made the case to enhance GUMCADv2 through modification of existing clinic software systems. GUMCADv2 is to be replaced by the next version which is the GUMCAD Sexually Transmitted Infection Surveillance System Data Set which includes:

- New Data Items and amendments to National Code values and descriptions to cover:
 - Enhanced behavioural data on the number of sexual partners
 - Condom use
 - Alcohol and recreational drug use
 - Partner notification outcomes
 - Pre-exposure prophylaxis (PrEP) HIV Intervention
 - SNOMED CT Items
 - Adding the new Data Elements for Lower Layer Super Output Area (Person Residence) and ONS Local Government Geographic Area Code (Local Authority District) in line with NHS Data Model and Dictionary Change Notice (DDCN) 1559
 - Replacing Data Element Site Code (Of Treatment) with Organisation Identifier (Code of Provider) to reflect changes to the coding structure of organisation reference data in line with the Information Standard SCCI0090
 - Renames the data set to GUMCAD Sexually Transmitted Infection Surveillance System Data Set.

This Change Request amends the GUMCAD Sexually Transmitted Infection Surveillance System Data Set and supporting definitions in the NHS Data Model and Dictionary to support the Information Standard.

To view a demonstration on "How to Read an NHS Data Model and Dictionary Change Request", visit the NHS Data Model and Dictionary help pages at: http://www.datadictionary.nhs.uk/Flash_Files/changerequest.htm. Note: if the web page does not open, please copy the link and paste into the web browser.

Summary of changes:

Diagrams

ACTIVITY DIAGRAM	Changed Diagram
CANCER OUTCOMES AND SERVICES DIAGRAM	Changed Diagram
COMMUNITY SERVICES DIAGRAM	Changed Diagram
HIV AND AIDS DIAGRAM	Changed Diagram
IMPROVING ACCESS TO PSYCHOLOGICAL THERAPIES DIAGRAM	Changed Diagram
MATERNITY SERVICES DIAGRAM	Changed Diagram
NATIONAL RENAL DIAGRAM	Changed Diagram
PATIENT PATHWAY DIAGRAM	Changed Diagram

Data Set

GUMCAD SEXUALLY TRANSMITTED INFECTION SURVEILLANCE SYSTEM DATA SET renamed from GENITOURINARY MEDICINE CLINIC ACTIVITY DATA SET	Changed Dataset, Description, Name
---	------------------------------------

Supporting Information

GUMCAD SEXUALLY TRANSMITTED INFECTION SURVEILLANCE SYSTEM DATA SET OVERVIEW renamed from GENITOURINARY MEDICINE CLINIC ACTIVITY DATA SET OVERVIEW	Changed Dataset, Description, Name
INITIAL PARTNER NOTIFICATION DISCUSSION	New Supporting Information
LEVEL 1 SEXUAL HEALTH SERVICE	Changed Description
LEVEL 2 SEXUAL HEALTH SERVICE	Changed Description
LEVEL 3 GENITOURINARY MEDICINE SERVICE	Changed Description
SEXUAL HEALTH AND HIV EPISODE	Changed Description

[SEXUALLY TRANSMITTED INFECTION SERVICE](#)

New Supporting Information

Class Definitions

[ACTIVITY OFFER](#)

Changed Attributes

[CARE CONTACT](#)

Changed Attributes

[CATEGORY VALUED PERSON OBSERVATION](#)

Changed Attributes

[CLINIC OR FACILITY](#)

Changed Attributes

[CONTRACEPTION](#)

Changed Attributes

[PATIENT DIAGNOSIS](#)

Changed Attributes

[PERSON](#)

Changed Attributes

[PRESCRIBED ITEM](#)

Changed Attributes

[SERVICE](#)

Changed Attributes

[SUBSTANCE](#)

Changed Attributes

Attribute Definitions

[ACTIVITY DATE](#)

Changed Dataset

[ALCOHOL USE ASSESSED AS PROBLEMATIC INDICATOR FOR SEXUAL HEALTH SERVICE](#)

New Attribute

[ALCOHOL USE ASSESSED INDICATOR FOR SEXUAL HEALTH SERVICE](#)

New Attribute

[CLINICAL CLASSIFICATION CODE](#)

Changed Dataset

[CLINICAL TERMINOLOGY CODE](#)

Changed Dataset

[CLINIC TYPE FOR SEXUAL HEALTH SERVICE](#)

New Attribute

[CONDOMLESS SEX INDICATOR](#)

New Attribute

[CONSULTATION MEDIUM USED](#)

Changed Dataset,
Description

[CONSULTATION TYPE](#)

Changed Dataset

[CONTRACEPTIVE SERVICE TYPE \(RETIRED\)](#) renamed from [CONTRACEPTIVE SERVICE TYPE](#)

Changed Description, Name,
status to Retired

[COUNTRY CODE](#)

Changed Dataset

[ETHNIC CATEGORY CODE](#)

Changed Dataset

[FIRST ATTENDANCE](#)

Changed Dataset

[GENDER IDENTITY CODE FOR SEXUAL HEALTH](#)

Changed Dataset,
Description

[GENDER IDENTITY SAME AT BIRTH INDICATOR](#)

Changed Dataset

[GEOGRAPHIC AREA CODE](#)

Changed Dataset

[HIV POSITIVE PARTNERS IN THE LAST THREE MONTHS INDICATOR FOR PENETRATIVE SEX MALE
SAME SEX PARTNERS](#)

New Attribute

[LOCAL PATIENT IDENTIFIER](#)

Changed Dataset

[NEW SEX PARTNERS IN THE LAST THREE MONTHS INDICATOR](#)

New Attribute

[NUMBER OF SEX PARTNERS IN LAST THREE MONTHS CODE](#)

New Attribute

[ORGANISATION IDENTIFIER](#)

Changed Dataset

[ORGANISATION SITE CODE](#)

Changed Dataset

[PARTNER NOTIFICATION CONSULTATION INDICATOR FOR SEXUAL HEALTH SERVICE](#)

New Attribute

[PATIENT DIAGNOSIS CONFIRMED INDICATION CODE FOR SEXUAL HEALTH SERVICE](#)

New Attribute

[PATIENT DIAGNOSIS SITE OF INFECTION FOR SEXUAL HEALTH SERVICE](#)

New Attribute

[PATIENT DIAGNOSIS TREATMENT PROVIDED INDICATION CODE FOR SEXUAL HEALTH SERVICE](#)

New Attribute

[PERSON RISK FACTOR FOR SEXUALLY TRANSMITTED INFECTION](#)

New Attribute

[PERSON STATED GENDER CODE](#)

Changed Dataset

[PERSON STATED SEXUAL ORIENTATION CODE](#)

Changed Dataset

[PRE EXPOSURE PROPHYLAXIS DRUG REGIMEN CODE](#)

New Attribute

[PRE EXPOSURE PROPHYLAXIS ELIGIBILITY REASON](#)

New Attribute

[PRE EXPOSURE PROPHYLAXIS OFFER STATUS CODE](#)

New Attribute

[PRE EXPOSURE PROPHYLAXIS STOPPED REASON](#)

New Attribute

[PRESCRIBED ITEM QUANTITY FOR PRE EXPOSURE PROPHYLAXIS](#)

New Attribute

[SERVICE TYPE](#)

Changed Description

[SERVICE TYPE FOR SEXUAL HEALTH](#)

New Attribute

[SEXUAL HEALTH AND HIV ACTIVITY PROPERTY TYPE](#)

Changed Dataset,
Description

[SEXUAL INTERCOURSE UNDER THE INFLUENCE OF SUBSTANCE INDICATOR](#)

New Attribute

[SEXUALLY TRANSMITTED INFECTION PATIENT DIAGNOSIS SYMPTOMATIC INDICATOR](#)

New Attribute

[SEXUAL ORIENTATION CODE](#)

Changed Dataset,
Description

[SUBSTANCE INJECTED IN THE LAST THREE MONTHS INDICATOR](#)

New Attribute

[SUBSTANCE INJECTED SHARED EQUIPMENT IN THE LAST THREE MONTHS INDICATOR](#)

New Attribute

SUBSTANCE USE IN THE LAST THREE MONTHS INDICATOR	New Attribute
Data Elements	
AGE AT ATTENDANCE DATE	Changed Dataset
ALCOHOL USE ASSESSED AS PROBLEMATIC INDICATOR (SEXUAL HEALTH SERVICE)	New Data Element
ALCOHOL USE ASSESSED INDICATOR (SEXUAL HEALTH SERVICE)	New Data Element
ATTENDANCE DATE	Changed Dataset
CLINIC TYPE (SEXUAL HEALTH SERVICE)	New Data Element
CONDOMLESS SEX INDICATOR (PENETRATIVE SEX MALE SAME SEX PARTNERS IN THE LAST THREE MONTHS)	New Data Element
CONDOMLESS SEX INDICATOR (PENETRATIVE SEX OPPOSITE SEX PARTNERS FOR THE LAST TIME PERSON HAD SEX))	New Data Element
CONDOMLESS SEX INDICATOR (RECEPTIVE SEX MALE SAME SEX PARTNERS IN THE LAST THREE MONTHS)	New Data Element
CONSULTATION MEDIUM USED (SEXUAL HEALTH SERVICE)	New Data Element
CONSULTATION TYPE	Changed Dataset
COUNTRY CODE (BIRTH)	Changed Dataset, Description
DIAGNOSTIC OR PROCEDURE CODING (SEXUAL HEALTH AND HUMAN IMMUNODEFICIENCY VIRUS RELEVANT READ CODES)	Changed Dataset, Description
ETHNIC CATEGORY	Changed Dataset, Description
FIRST ATTENDANCE CODE	Changed Dataset, Description
GENDER IDENTITY CODE (SEXUAL HEALTH)	Changed Dataset
GENDER IDENTITY SAME AT BIRTH INDICATOR	Changed Dataset
HIV POSITIVE PARTNERS IN LAST THREE MONTHS INDICATOR (PENETRATIVE SEX MALE SAME SEX PARTNERS)	New Data Element
INITIAL PARTNER NOTIFICATION DISCUSSION DATE	New Data Element
LOCAL PATIENT IDENTIFIER (EXTENDED)	Changed Dataset, Description
LOWER LAYER SUPER OUTPUT AREA (PERSON RESIDENCE)	Changed Dataset, Description
LOWER LAYER SUPER OUTPUT AREA (RESIDENCE)	Changed Dataset
NEW SEX PARTNERS IN LAST THREE MONTHS INDICATOR (FEMALE SAME SEX PARTNERS)	New Data Element
NEW SEX PARTNERS IN LAST THREE MONTHS INDICATOR (OPPOSITE SEX PARTNERS)	New Data Element
NUMBER OF CONTACTABLE PATIENT REPORTED PARTNERS FOR DIAGNOSED SEXUALLY TRANSMITTED INFECTION	New Data Element
NUMBER OF PATIENT PARTNERS CONFIRMED AS ATTENDED A SEXUAL HEALTH SERVICE	New Data Element
NUMBER OF PATIENT PARTNERS REPORTED AS ATTENDED A SEXUAL HEALTH SERVICE	New Data Element
NUMBER OF PATIENT REPORTED PARTNERS FOR DIAGNOSED SEXUALLY TRANSMITTED INFECTION	New Data Element
NUMBER OF SEX PARTNERS IN LAST THREE MONTHS CODE (FEMALE SAME SEX PARTNERS)	New Data Element
NUMBER OF SEX PARTNERS IN LAST THREE MONTHS CODE (MALE SAME SEX PARTNERS)	New Data Element
NUMBER OF SEX PARTNERS IN LAST THREE MONTHS CODE (OPPOSITE SEX PARTNERS)	New Data Element
ONS LOCAL GOVERNMENT GEOGRAPHIC AREA CODE (LOCAL AUTHORITY DISTRICT)	Changed Dataset, Description
ONS LOCAL GOVERNMENT GEOGRAPHY CODE (LOCAL AUTHORITY DISTRICT) (RETIRED) renamed from ONS LOCAL GOVERNMENT GEOGRAPHY CODE (LOCAL AUTHORITY DISTRICT)	Changed Dataset, Description, Name, linked Attribute, status to Retired
ORGANISATION SITE IDENTIFIER (OF TREATMENT)	Changed Dataset
PARTNER NOTIFICATION CONSULTATION INDICATOR (SEXUAL HEALTH SERVICE)	New Data Element
PATIENT DIAGNOSIS CONFIRMED INDICATION CODE (SEXUAL HEALTH SERVICE)	New Data Element
PATIENT DIAGNOSIS SITE OF INFECTION (SEXUAL HEALTH SERVICE)	New Data Element
PATIENT DIAGNOSIS TREATMENT PROVIDED INDICATION CODE (SEXUAL HEALTH SERVICE)	New Data Element
PERSON RISK FACTOR (SEXUALLY TRANSMITTED INFECTION)	New Data Element
PERSON STATED GENDER CODE	Changed Dataset
PERSON STATED SEXUAL ORIENTATION CODE	Changed Dataset, Description
PRE EXPOSURE PROPHYLAXIS DRUG REGIMEN CODE	New Data Element
PRE EXPOSURE PROPHYLAXIS ELIGIBILITY REASON	New Data Element
PRE EXPOSURE PROPHYLAXIS OFFER STATUS CODE	New Data Element
PRE EXPOSURE PROPHYLAXIS STOPPED REASON	New Data Element
PRESCRIBED ITEM QUANTITY (PRE EXPOSURE PROPHYLAXIS)	New Data Element
SERVICE TYPE (SEXUAL HEALTH)	New Data Element

SEXUAL HEALTH AND HIV ACTIVITY HEALTH ISSUE (SNOMED CT)	New Data Element
SEXUAL HEALTH AND HIV ACTIVITY PROCEDURE (SNOMED CT)	New Data Element
SEXUAL HEALTH AND HIV ACTIVITY PROPERTY TYPE	Changed Dataset
SEXUAL HEALTH SERVICE ATTENDANCE SOURCE (SNOMED CT)	New Data Element
SEXUAL INTERCOURSE UNDER THE INFLUENCE OF SUBSTANCE INDICATOR	New Data Element
SEXUALLY TRANSMITTED INFECTION PATIENT DIAGNOSIS SYMPTOMATIC INDICATOR	New Data Element
SEXUAL ORIENTATION (CURRENT)	Changed Dataset, Description
SITE CODE (OF TREATMENT)	Changed Dataset, Description
SNOMED CT EXPRESSION	Changed Description
SUBSTANCE INJECTED IN THE LAST THREE MONTHS INDICATOR	New Data Element
SUBSTANCE INJECTED SHARED EQUIPMENT IN THE LAST THREE MONTHS INDICATOR	New Data Element
SUBSTANCE USE IN THE LAST THREE MONTHS INDICATOR (AMPHETAMINE OR SPEED)	New Data Element
SUBSTANCE USE IN THE LAST THREE MONTHS INDICATOR (BENZODIAZEPINES NON PRESCRIBED)	New Data Element
SUBSTANCE USE IN THE LAST THREE MONTHS INDICATOR (CANNABIS)	New Data Element
SUBSTANCE USE IN THE LAST THREE MONTHS INDICATOR (COCAINE)	New Data Element
SUBSTANCE USE IN THE LAST THREE MONTHS INDICATOR (CRACK)	New Data Element
SUBSTANCE USE IN THE LAST THREE MONTHS INDICATOR (CRYSTAL METH OR METHAMPHETAMINE)	New Data Element
SUBSTANCE USE IN THE LAST THREE MONTHS INDICATOR (ECSTASY OR METHYLENEDIOXYMETHAMPHETAMINE)	New Data Element
SUBSTANCE USE IN THE LAST THREE MONTHS INDICATOR (GAMMAHYDROXYBUTYRATE OR GAMMABUTYROLACTONE)	New Data Element
SUBSTANCE USE IN THE LAST THREE MONTHS INDICATOR (HEROIN)	New Data Element
SUBSTANCE USE IN THE LAST THREE MONTHS INDICATOR (KETAMINE)	New Data Element
SUBSTANCE USE IN THE LAST THREE MONTHS INDICATOR (MEPHEDRONE)	New Data Element
SUBSTANCE USE IN THE LAST THREE MONTHS INDICATOR (METHADONE)	New Data Element
SUBSTANCE USE IN THE LAST THREE MONTHS INDICATOR (NOVEL PSYCHOACTIVE)	New Data Element
SUBSTANCE USE IN THE LAST THREE MONTHS INDICATOR (POPPERS)	New Data Element
SUBSTANCE USE IN THE LAST THREE MONTHS INDICATOR (RECREATIONAL DRUGS)	New Data Element
SUBSTANCE USE IN THE LAST THREE MONTHS INDICATOR (SOLVENTS OR GLUE)	New Data Element
SUBSTANCE USE IN THE LAST THREE MONTHS INDICATOR (UNCLASSIFIED SUBSTANCE)	New Data Element

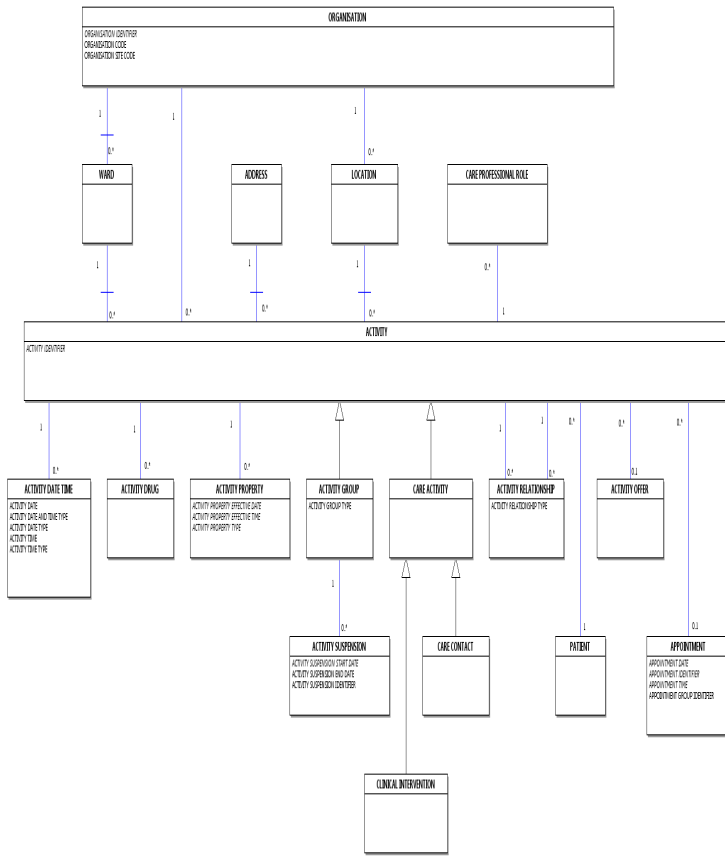
Date: 12 June 2018

Sponsor: Professor Noel Gill, Head of HIV/STI Department, Public Health England

Note: New text is shown with a blue background. Deleted text is crossed out. Retired text is shown in grey. Within the Diagrams deleted classes and relationships are red, changed items are blue and new items are green.

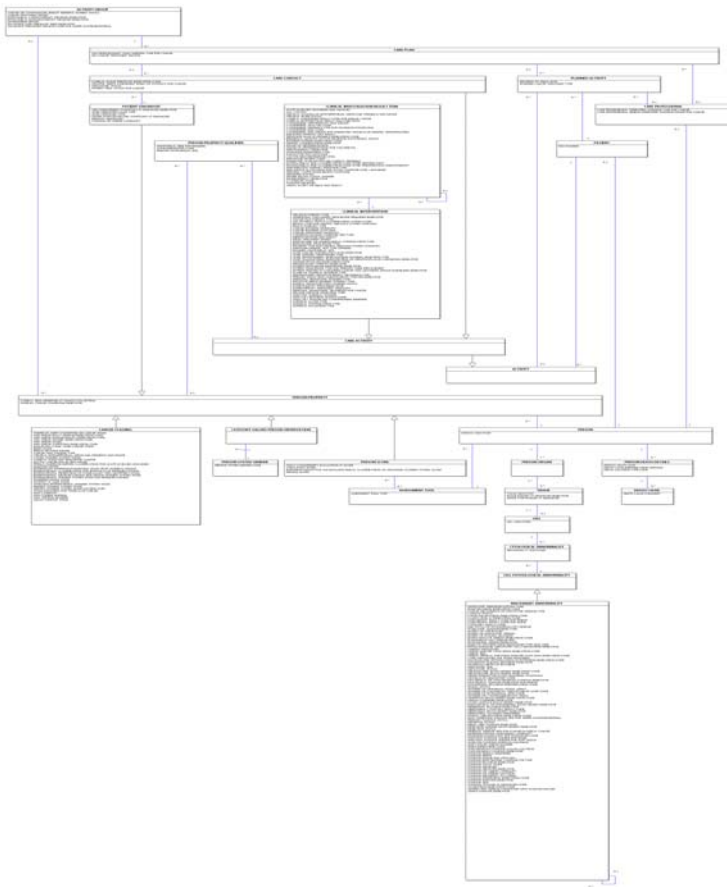
ACTIVITY DIAGRAM

Change to Diagram: Changed Diagram



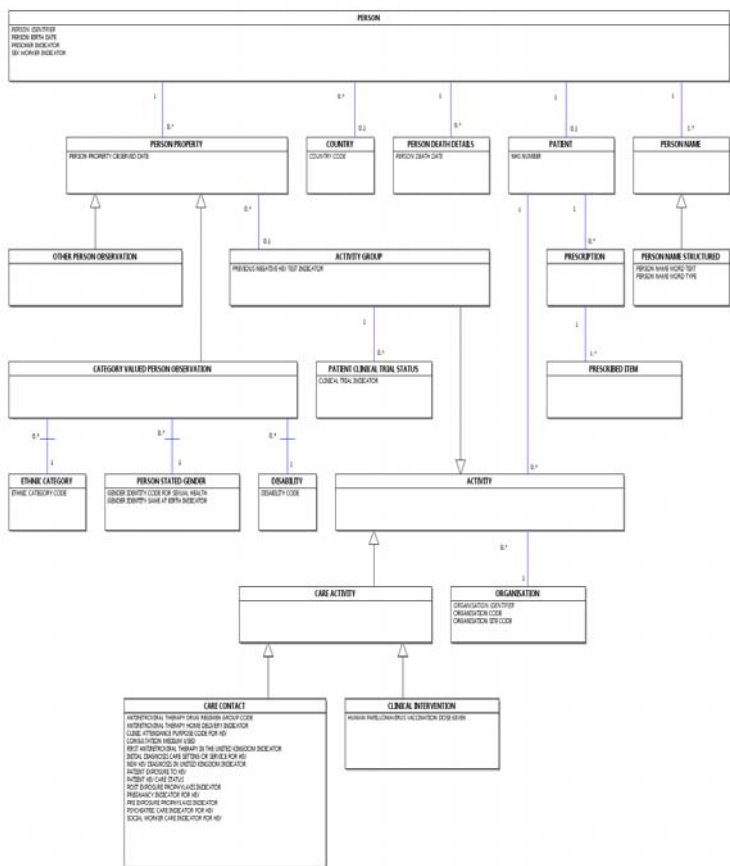
CANCER OUTCOMES AND SERVICES DIAGRAM

Change to Diagram: Changed Diagram



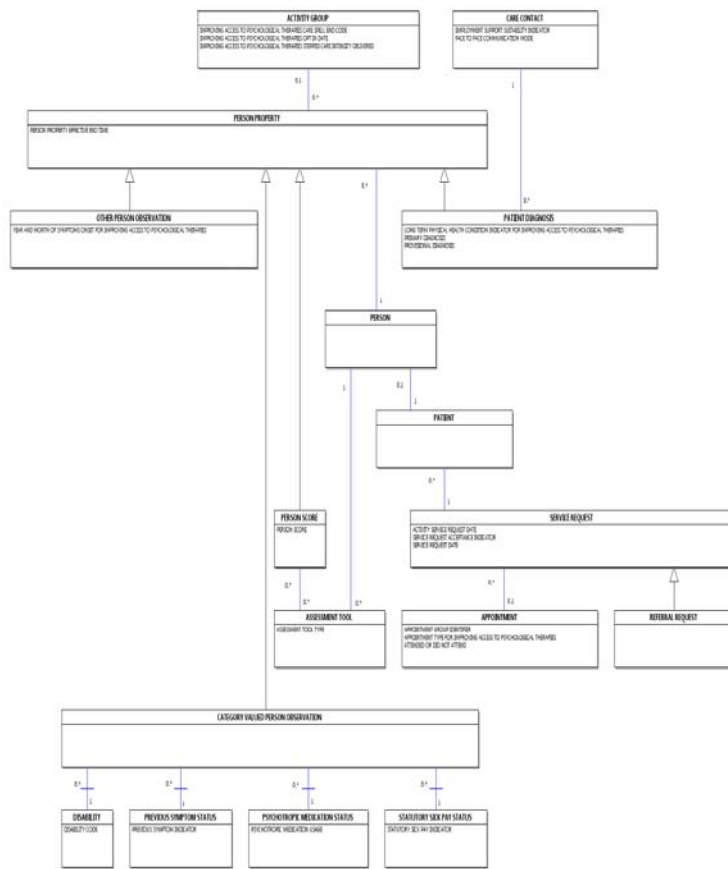
HIV AND AIDS DIAGRAM

Change to Diagram: Changed Diagram



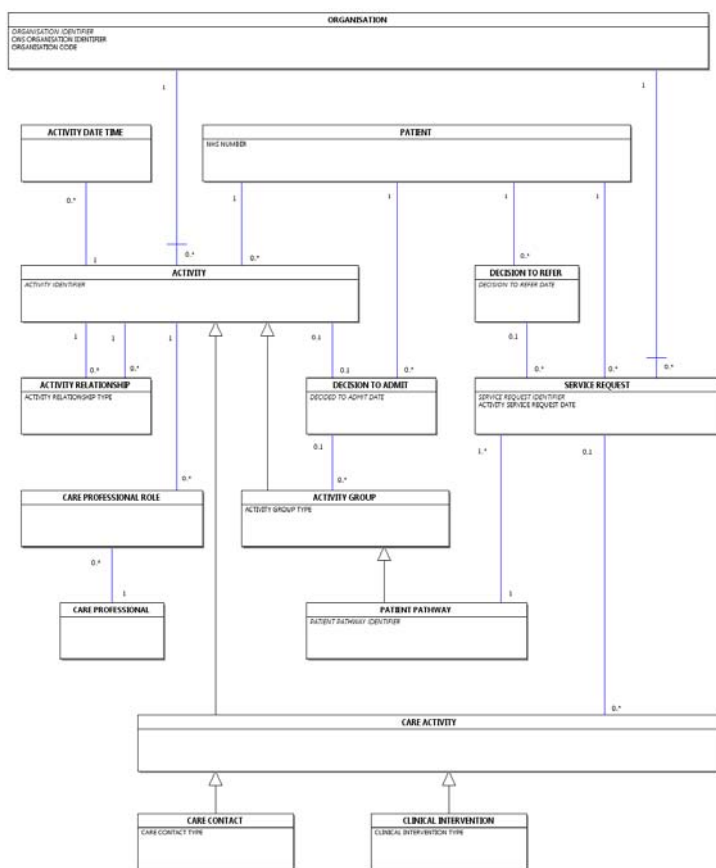
IMPROVING ACCESS TO PSYCHOLOGICAL THERAPIES DIAGRAM

Change to Diagram: Changed Diagram



PATIENT PATHWAY DIAGRAM

Change to Diagram: Changed Diagram



GUMCAD SEXUALLY TRANSMITTED INFECTION SURVEILLANCE SYSTEM DATA SET_ renamed from GENITOURINARY MEDICINE CLINIC ACTIVITY DATA SET

Change to Data Set: Changed Dataset, Description, Name

[Genitourinary Medicine Clinic Activity Data Set Overview](#) [GUMCAD Sexually Transmitted Infection Surveillance System Data Set Overview](#)

The Opt (Optionality) column indicates the NHS recommendation for the inclusion of data. For a "Full Screen" view, click [GUMCAD Sexually Transmitted Infection Surveillance System Data Set](#).

In the "Full Screen" view, to return to the "Data Set" view, click the browser "back" button.

The Mandatory, Required or Optional (M/R/O) column indicates the recommendation for the inclusion of data.

- M = Mandatory: this data element is mandatory and the technical process (e.g. submission of the data set, production of output etc) cannot be completed without this data element being present
- R = Required: NHS business processes cannot be delivered without this data element.
- R = Required: NHS business processes cannot be delivered without this data element
- O = Optional: the inclusion of this data element is optional as required for local purposes.

Opt	Data-Set-Data-Elements
M	SITE CODE (OF TREATMENT)
M	LOCAL PATIENT IDENTIFIER (EXTENDED)
R	SEXUAL HEALTH AND HIV ACTIVITY PROPERTY TYPE
R	Multiple occurrences of this data item are permitted or DIAGNOSTIC OR PROCEDURE CODING (SEXUAL HEALTH AND HUMAN IMMUNODEFICIENCY VIRUS RELEVANT READ CODES) Multiple occurrences of this data item are permitted
M	PERSON STATED GENDER CODE
M	AGE AT ATTENDANCE DATE
M	SEXUAL ORIENTATION (CURRENT)
M	ETHNIC CATEGORY

M	COUNTRY CODE (BIRTH)
M	ONS LOCAL GOVERNMENT GEOGRAPHY CODE (LOCAL AUTHORITY DISTRICT)
M	LOWER LAYER SUPER OUTPUT AREA (RESIDENCE)
M	FIRST ATTENDANCE CODE
M	ATTENDANCE DATE
SERVICE INFORMATION DETAILS	

To carry the service information details. One occurrence of this group is required.	
M/R/O	Data Set Data Elements
M	ORGANISATION SITE IDENTIFIER (OF TREATMENT)
M	CLINIC TYPE (SEXUAL HEALTH SERVICE)

PERSONAL AND DEMOGRAPHIC DETAILS

To carry personal and demographic details. One occurrence of this group is required.	
M/R/O	Data Set Data Elements
M	LOCAL PATIENT IDENTIFIER (EXTENDED)
M	PERSON RISK FACTOR (SEXUALLY TRANSMITTED INFECTION)
M	GENDER IDENTITY CODE (SEXUAL HEALTH)
M	GENDER IDENTITY SAME AT BIRTH INDICATOR
M	AGE AT ATTENDANCE DATE
M	PERSON STATED SEXUAL ORIENTATION CODE
M	ETHNIC CATEGORY
M	COUNTRY CODE (BIRTH)
M	ONS LOCAL GOVERNMENT GEOGRAPHIC AREA CODE (LOCAL AUTHORITY DISTRICT)
M	LOWER LAYER SUPER OUTPUT AREA (PERSON RESIDENCE)

CLINIC ATTENDANCE AND ACTIVITY DETAILS

To carry clinic attendance and activity details. One occurrence of this group is required.	
M/R/O	Data Set Data Elements
M	SEXUAL HEALTH SERVICE ATTENDANCE SOURCE (SNOMED CT)
M	ATTENDANCE DATE
M	CONSULTATION MEDIUM USED (SEXUAL HEALTH SERVICE)
M	CONSULTATION TYPE
M	SERVICE TYPE (SEXUAL HEALTH)
M	PARTNER NOTIFICATION CONSULTATION INDICATOR (SEXUAL HEALTH SERVICE)
M	SEXUALLY TRANSMITTED INFECTION PATIENT DIAGNOSIS SYMPTOMATIC INDICATOR
R	SEXUAL HEALTH AND HIV ACTIVITY PROPERTY TYPE Multiple occurrences of this data item are permitted or DIAGNOSTIC OR PROCEDURE CODING (SEXUAL HEALTH AND HUMAN IMMUNODEFICIENCY VIRUS RELEVANT READ CODES) Multiple occurrences of this data item are permitted or SEXUAL HEALTH AND HIV ACTIVITY HEALTH ISSUE (SNOMED CT) Multiple occurrences of this data item are permitted or SEXUAL HEALTH AND HIV ACTIVITY PROCEDURE (SNOMED CT)
M	PATIENT DIAGNOSIS CONFIRMED INDICATION CODE (SEXUAL HEALTH SERVICE)
M	PATIENT DIAGNOSIS SITE OF INFECTION (SEXUAL HEALTH SERVICE)
M	PATIENT DIAGNOSIS TREATMENT PROVIDED INDICATION CODE (SEXUAL HEALTH SERVICE)

PARTNER DETAILS

To carry the opposite sex partnership details. One occurrence of this group is required.	
M/R/O	Data Set Data Elements
M	NUMBER OF SEX PARTNERS IN LAST THREE MONTHS CODE (OPPOSITE SEX PARTNERS)
M	NEW SEX PARTNERS IN LAST THREE MONTHS INDICATOR (OPPOSITE SEX PARTNERS)
M	

CONDOMLESS SEX INDICATOR (PENETRATIVE SEX OPPOSITE SEX PARTNERS FOR THE LAST TIME PERSON HAD SEX)

To carry the male same sex partnership details.
One occurrence of this group is required.

M/R/O	Data Set Data Elements
M	NUMBER OF SEX PARTNERS IN LAST THREE MONTHS CODE (MALE SAME SEX PARTNERS)
M	HIV POSITIVE PARTNERS IN LAST THREE MONTHS INDICATOR (PENETRATIVE SEX MALE SAME SEX PARTNERS)
M	CONDOMLESS SEX INDICATOR (PENETRATIVE SEX MALE SAME SEX PARTNERS IN THE LAST THREE MONTHS)
M	CONDOMLESS SEX INDICATOR (RECEPTIVE SEX MALE SAME SEX PARTNERS IN THE LAST THREE MONTHS)

To carry the female same sex partnership details.
One occurrence of this group is required.

M/R/O	Data Set Data Elements
M	NUMBER OF SEX PARTNERS IN LAST THREE MONTHS CODE (FEMALE SAME SEX PARTNERS)
M	NEW SEX PARTNERS IN LAST THREE MONTHS INDICATOR (FEMALE SAME SEX PARTNERS)

To carry the partner notification details.
One occurrence of this group is required.

M/R/O	Data Set Data Elements
M	INITIAL PARTNER NOTIFICATION DISCUSSION DATE
M	NUMBER OF PATIENT REPORTED PARTNERS FOR DIAGNOSED SEXUALLY TRANSMITTED INFECTION
M	NUMBER OF CONTACTABLE PATIENT REPORTED PARTNERS FOR DIAGNOSED SEXUALLY TRANSMITTED INFECTION
M	NUMBER OF PATIENT PARTNERS REPORTED AS ATTENDED A SEXUAL HEALTH SERVICE
M	NUMBER OF PATIENT PARTNERS CONFIRMED AS ATTENDED A SEXUAL HEALTH SERVICE

PRE-EXPOSURE PROPHYLAXIS (PrEP) DETAILS

To carry the Pre- Exposure Prophylaxis (PrEP) details.
One occurrence of this group is required.

M/R/O	Data Set Data Elements
M	PRE EXPOSURE PROPHYLAXIS ELIGIBILITY REASON
M	PRE EXPOSURE PROPHYLAXIS OFFER STATUS CODE
M	PRE EXPOSURE PROPHYLAXIS DRUG REGIMEN CODE
M	PRESCRIBED ITEM QUANTITY (PRE EXPOSURE PROPHYLAXIS)
M	PRE EXPOSURE PROPHYLAXIS STOPPED REASON

DRUG AND ALCOHOL USAGE DETAILS

To carry drug and alcohol usage details.
One occurrence of this group is required.

M/R/O	Data Set Data Elements
M	ALCOHOL USE ASSESSED INDICATOR (SEXUAL HEALTH SERVICE)
M	ALCOHOL USE ASSESSED AS PROBLEMATIC INDICATOR (SEXUAL HEALTH SERVICE)
M	SUBSTANCE USE IN THE LAST THREE MONTHS INDICATOR (RECREATIONAL DRUGS)
M	SUBSTANCE USE IN THE LAST THREE MONTHS INDICATOR (AMPHETAMINE OR SPEED)
M	SUBSTANCE USE IN THE LAST THREE MONTHS INDICATOR (BENZODIAZEPINES NON PRESCRIBED)
M	SUBSTANCE USE IN THE LAST THREE MONTHS INDICATOR (CANNABIS)
M	SUBSTANCE USE IN THE LAST THREE MONTHS INDICATOR (COCAINE)
M	SUBSTANCE USE IN THE LAST THREE MONTHS INDICATOR (CRACK)
M	SUBSTANCE USE IN THE LAST THREE MONTHS INDICATOR (CRYSTAL METH OR METHAMPHETAMINE)
M	SUBSTANCE USE IN THE LAST THREE MONTHS INDICATOR (ECSTASY OR METHYLENEDIOXYMETHAMPHETAMINE)
M	SUBSTANCE USE IN THE LAST THREE MONTHS INDICATOR (GAMMAHYDROXYBUTYRATE OR GAMMABUTYROLACTONE)
M	SUBSTANCE USE IN THE LAST THREE MONTHS INDICATOR (HEROIN)
M	SUBSTANCE USE IN THE LAST THREE MONTHS INDICATOR (KETAMINE)
M	SUBSTANCE USE IN THE LAST THREE MONTHS INDICATOR (MEPHEDRONE)
M	SUBSTANCE USE IN THE LAST THREE MONTHS INDICATOR (METHADONE)
M	SUBSTANCE USE IN THE LAST THREE MONTHS INDICATOR (NOVEL PSYCHOACTIVE)
M	SUBSTANCE USE IN THE LAST THREE MONTHS INDICATOR (POPPERS)
M	SUBSTANCE USE IN THE LAST THREE MONTHS INDICATOR (SOLVENTS OR GLUE)
M	SUBSTANCE USE IN THE LAST THREE MONTHS INDICATOR (UNCLASSIFIED SUBSTANCE)
M	SUBSTANCE INJECTED IN THE LAST THREE MONTHS INDICATOR

M	SUBSTANCE INJECTED SHARED EQUIPMENT IN THE LAST THREE MONTHS INDICATOR
M	SEXUAL INTERCOURSE UNDER THE INFLUENCE OF SUBSTANCE INDICATOR

GUMCAD SEXUALLY TRANSMITTED INFECTION SURVEILLANCE SYSTEM DATA SET_ renamed from GENITOURINARY MEDICINE CLINIC ACTIVITY DATA SET

Change to Data Set: Changed Dataset, Description, Name

- null
- Changed Description
- Changed Name from [Data_Dictionary.Messages.Clinical_Data_Sets.Data_Sets.Genitourinary_Medicine_Clinic_Activity_Data_Set](#) to [Data_Dictionary.Messages.Clinical_Data_Sets.Data_Sets.GUMCAD_Sexually_Transmitted_Infection_Surveillance_System_Data_Set](#)

GUMCAD SEXUALLY TRANSMITTED INFECTION SURVEILLANCE SYSTEM DATA SET OVERVIEW_ renamed from GENITOURINARY MEDICINE CLINIC ACTIVITY DATA SET OVERVIEW

Change to Supporting Information: Changed Dataset, Description, Name

Contextual Overview

The [Genitourinary Medicine Clinic Activity Data Set](#) provides essential public health information about Sexually Transmitted Infection (STI) diagnoses, treatments and [SERVICES](#) provided by [Level 3 Genitourinary Medicine Services](#) and commissioned [Level 2 Sexual Health Services](#). The [GUMCAD Sexually Transmitted Infection Surveillance System Data Set](#) provides essential public health information about Sexually Transmitted Infection (STI) diagnoses, treatments and [SERVICES](#) provided by [Level 3 Genitourinary Medicine Services](#) and commissioned [Level 2 Sexual Health Services](#).

The [Genitourinary Medicine Clinic Activity Data Set](#) is used: The [GUMCAD Sexually Transmitted Infection Surveillance System Data Set](#) is used:

- To inform public health response and policy formulation for England
- To monitor the effectiveness of the policies introduced as part of the National Strategy for Sexual Health and Human Immunodeficiency Virus (HIV)
- For performance management at local and national level to ensure delivery of the national Public Service Agreement target on [Sexual Health Services](#)
- For better planning and management of [Sexual Health Services](#) at local level
- To adapt and refine clinical interventions, as appropriate

DATA EXTRACT SPECIFICATION

Description:

[Public Health England](#) require [Sexual Health Services](#) to generate and provide a data extract in accordance with the [Genitourinary Medicine Clinic Activity Data Set](#). [Public Health England](#) require [Sexual Health Services](#) to generate and provide a data extract in accordance with the [GUMCAD Sexually Transmitted Infection Surveillance System Data Set](#). These [SERVICES](#) include:

- NHS providers of specialised [Level 3 Genitourinary Medicine Services](#), where the primary function of the specialist clinical multidisciplinary team is concerned with the provision of screening, diagnosis and management of Sexually Transmitted Infections and related genital medical conditions.
- All [Level 2 Sexual Health Services](#) commissioned by the NHS who offer testing, diagnostic and/or treatment of Sexually Transmitted Infections.

It should be noted that [General Practitioners with Special Interests \(GPwSI\)](#) will only be included if they operate from a [General Medical Practitioner Practice](#) that has been commissioned to provide a [Level 2 Sexual Health Service](#).

Time period: The extract must cover one calendar quarter.

Frequency: Reports must be run quarterly, 6 weeks after the end of the quarter.

Format: Data returned must be formatted into a single comma separated variable (csv) file. The data elements should be transmitted in the order specified in the [Genitourinary Medicine Clinic Activity Data Set](#). The data elements should be transmitted in the order specified in the [GUMCAD Sexually Transmitted Infection Surveillance System Data Set](#).

Transmission: Electronic files must be transmitted to [Public Health England](#) through a secure web portal on the [Public Health England](#) website. This web portal enables [Organisations](#) to submit data files in a secure manner to the HIV and STI Department of [Public Health England](#). The web portal can be found at [HIV & STI web portal](#).

Connection to the web portal requires a login account name and password at [Public Health England](#). Please contact gumcad@phe.org.uk for access or more information.

Further guidance on the [Genitourinary Medicine Clinic Activity Data Set](#) can be found on the [Public Health England](#) part of the gov.uk website at: [Genitourinary Medicine Clinic Activity Data Set](#).

Further guidance on the [GUMCAD Sexually Transmitted Infection Surveillance System Data Set](#) can be found on the [Public Health England](#) part of the gov.uk website at: [STIs: surveillance, data, screening and management](#).

INITIAL PARTNER NOTIFICATION DISCUSSION

Change to Supporting Information: New Supporting Information

An [Initial Partner Notification Discussion](#) is a [CARE CONTACT](#).

An [Initial Partner Notification Discussion](#) is the initial discussion at a [Sexual Health Service](#) about the [PERSON](#)'s partners.

This supporting information is also known by these names:

Context	Alias
plural	Initial Partner Notification Discussions

LEVEL 1 SEXUAL HEALTH SERVICE

Change to Supporting Information: Changed Description

[Level 1 Sexual Health Service](#) is a [Sexual Health Service](#).

[Level 1 Sexual Health Services](#) provide Sexually Transmitted Infection (STI) management and includes:

- Sexual history-taking and risk assessment: Including assessment of need for emergency [CONTRACEPTION](#) and Human Immunodeficiency Virus (HIV) post-exposure prophylaxis following sexual exposure (PEPSE)
- Signposting to appropriate [Sexual Health Services](#)
- Chlamydia screening: Opportunistic screening for genital chlamydia in asymptomatic males and females under the age of 25
- Asymptomatic Sexually Transmitted Infection screening and treatment of asymptomatic infections (except treatment for syphilis) in men (excluding men who have sex with men) and women
- Partner notification of Sexually Transmitted Infections or onward referral for partner notification
- Human Immunodeficiency Virus testing: Including appropriate pre-test discussion and giving results
- Point of care Human Immunodeficiency Virus testing: Rapid result Human Immunodeficiency Virus testing using a validated test (with confirmation of positive results or referral for confirmation)
- Screening and vaccination for Hepatitis B: Appropriate screening and vaccination for Hepatitis B in at-risk groups
- Sexual health promotion: Provision of verbal and written sexual health promotion information
- Condom distribution: Provision of condoms for safer sex
- Psychosexual problems: Assessment and referral for psychosexual problems

LEVEL 2 SEXUAL HEALTH SERVICE

Change to Supporting Information: Changed Description

A [Level 2 Sexual Health Service](#) is a [Sexual Health Service](#).

[Level 2 Sexual Health Services](#) incorporate [Sexual Health Services](#) provided by a [Level 1 Sexual Health Service](#) plus:

- Intrauterine Device/System (IUD/IUS) insertion and removal (including emergency IUD)
- [CONTRACEPTION](#) implant insertion and removal
- ~~Counselling and referral for vasectomy~~
- Sexually Transmitted Infection (STI) testing and treatment of symptomatic but uncomplicated infections in men (except men who have sex with men) and women excluding: men with dysuria and/or genital discharge, symptoms at extra-genital sites, e.g. rectal or pharyngeal, pregnant women, genital ulceration other than uncomplicated genital herpes.

Commissioned [Level 2 Sexual Health Services](#) include:

- Enhanced General Practices
- [Sexual and Reproductive Health Services](#)
- ~~Integrated services (joint Genitourinary Medicine and [Sexual and Reproductive Health Services](#))~~
- Young people clinics such as Brook
- Other NHS commissioned [Sexual Health Services](#)

LEVEL 3 GENITOURINARY MEDICINE SERVICE

Change to Supporting Information: Changed Description

A [Level 3 Genitourinary Medicine Service](#) is a [Sexual Health Service](#).

[Level 3 Genitourinary Medicine Services](#) provide Sexually Transmitted Infection (STI) management and include [SERVICES](#) provided by [Level 1 Sexual Health Services](#) and [Level 2 Sexual Health Services](#) plus:

- Sexually Transmitted Infection testing and treatment of men who have sex with men
- Sexually Transmitted Infection testing and treatment of men with dysuria and genital discharge
- Testing and treatment of Sexually Transmitted Infections at extra-genital sites
- Sexually Transmitted Infections with complications, with or without symptoms
- Sexually Transmitted Infections in pregnant women
- Gonorrhoea cultures and treatment of gonorrhoea
- Recurrent or recalcitrant Sexually Transmitted Infections and related conditions
- Management of syphilis at all stages of infection and blood borne viruses
- Management of syphilis at all stages of infection and blood borne viruses
- Tropical Sexually Transmitted Infections
- Specialist Sexually Transmitted Infection (HIV) treatment and care
- Provision and follow up of Sexually Transmitted Infection post exposure prophylaxis (PEP), both sexual and occupational
- Specialist HIV treatment and care
- Provision and follow up of HIV post exposure prophylaxis (PEP), both sexual and occupational
- Sexually Transmitted Infection service co-ordination across a network including:
 - Clinical leadership of Sexually Transmitted Infection management
 - Co-ordination of clinical governance
 - Co-ordination of Sexually Transmitted Infection training
 - Co-ordination of partner notification

SEXUAL HEALTH AND HIV EPISODE

Change to Supporting Information: Changed Description

A [Sexual Health and HIV Episode](#) is an [ACTIVITY GROUP](#).

A [Sexual Health and HIV Episode](#) is an episode of care, under one [Health Care Provider](#), comprising of one or more attendances, where a [CONSULTANT](#) has overall responsibility for the [PATIENT](#) who attends for screening, diagnosis and management of sexually transmissible infections and related conditions. The [PATIENT](#) may be seen by other [CARE PROFESSIONALS](#), during the same care episode, who are working on behalf of the [CONSULTANT](#).

The episode starts on the date the [PATIENT](#) first sees or is in contact with a [CARE PROFESSIONAL](#) in respect of a [REFERRAL REQUEST](#) from either a [Health Care Provider](#) or a self referral.

~~The episode ends when either the [PATIENT](#) is formally discharged or has not had face to face contact with the [SERVICE](#) for at least six months.~~

The episode ends when either the [PATIENT](#) is formally discharged or has not had face to face contact with the [SERVICE](#) for at least six weeks.

~~Each [Sexual Health and HIV Episode](#) may be for one or more [SEXUAL HEALTH AND HIV ACTIVITY PROPERTY TYPES](#) and each [SEXUAL HEALTH AND HIV ACTIVITY PROPERTY TYPE](#) is recorded at a first attendance. The only exception to this is where the [PATIENT](#) attends for HIV related care in which case the relevant [SEXUAL HEALTH AND HIV ACTIVITY PROPERTY TYPE](#) should be recorded at every attendance.~~

Each [Sexual Health and HIV Episode](#) may be for one or more [SEXUAL HEALTH AND HIV ACTIVITY PROPERTY TYPES](#) or [SEXUAL HEALTH AND HIV ACTIVITY HEALTH ISSUES \(SNOMED CT\)](#) or [SEXUAL HEALTH AND HIV ACTIVITY PROCEDURES \(SNOMED CT\)](#) and each [SEXUAL HEALTH AND HIV ACTIVITY PROPERTY TYPE](#) or [SEXUAL HEALTH AND HIV ACTIVITY HEALTH ISSUE \(SNOMED CT\)](#) or [SEXUAL HEALTH AND HIV ACTIVITY PROCEDURE \(SNOMED CT\)](#) is recorded at a first attendance. The only exception to this is where the [PATIENT](#) attends for HIV-related care in which case the relevant [SEXUAL HEALTH AND HIV ACTIVITY PROPERTY TYPE](#) or [SEXUAL HEALTH AND HIV ACTIVITY HEALTH ISSUE \(SNOMED CT\)](#) should be recorded at every attendance.

SEXUALLY TRANSMITTED INFECTION SERVICE

Change to Supporting Information: New Supporting Information

A [Sexually Transmitted Infection Service](#) is a [SERVICE](#).

A [Sexually Transmitted Infection Service](#) is a free and open access [SERVICE](#) providing advice and testing for Sexually Transmitted Infections (STIs), treatment counselling and partner notification for those found to have STIs.

This supporting information is also known by these names:

Context	Alias
shortname	STI Service
plural	Sexually Transmitted Infection Services

ACTIVITY OFFER

Change to Class: Changed Attributes

Attributes of this Class are:

- K ACTIVITY OFFER DATE
- K ACTIVITY OFFER STATUS CODE
- ACTIVITY NOT OFFERED REASON CODE FOR MATERNITY
- PRE EXPOSURE PROPHYLAXIS OFFER STATUS CODE**

CARE CONTACT

Change to Class: Changed Attributes

Attributes of this Class are:

- A and E ATTENDANCE CATEGORY
- A and E INITIAL ASSESSMENT TRIAGE CATEGORY
- A and E STREAM
- ACCIDENT AND EMERGENCY ARRIVAL MODE
- ACCIDENT AND EMERGENCY ATTENDANCE DISPOSAL
- ANTIRETROVIRAL THERAPY DRUG REGIMEN GROUP CODE
- ANTIRETROVIRAL THERAPY HOME DELIVERY INDICATOR
- BRIEF INTERVENTION PROVIDED INDICATOR
- BRIEF INTERVENTION TYPE FOR NHS HEALTH CHECK
- CARE CONTACT CANCELLATION REASON
- CARE CONTACT SUBJECT
- CARE CONTACT TYPE
- CHILD DIFFICULT TO TEST REASON
- CLINICAL NURSE SPECIALIST INDICATION CODE
- CLINIC ATTENDANCE PURPOSE CODE FOR HIV
- COLPOSCOPY PRIME PROCEDURE TYPE
- CONSULTATION MEDIUM USED
- CONSULTATION TYPE
- ~~CONTRACEPTIVE SERVICE TYPE~~
- DECISION TO UNDERTAKE FURTHER ASSESSMENT INDICATOR
- DIETARY ADVICE REASON CODE
- EMPLOYMENT SUPPORT SUITABILITY INDICATOR
- FACE TO FACE COMMUNICATION MODE
- FEMALE GENITAL MUTILATION IDENTIFICATION METHOD CODE
- FIRST ANTIRETROVIRAL THERAPY IN THE UNITED KINGDOM INDICATOR
- FIRST ATTENDANCE
- FIVE FORENSIC PATHWAYS ASSESSMENT REASON
- FIVE FORENSIC PATHWAYS CODE
- FURTHER ASSESSMENT TYPE FOR NHS HEALTH CHECK
- HIV POSITIVE PARTNERS IN THE LAST THREE MONTHS INDICATOR FOR PENETRATIVE SEX MALE SAME SEX PARTNERS**
- HOLISTIC NEEDS ASSESSMENT POINT OF PATHWAY FOR CANCER
- INFORMATION AND ADVICE PROVIDED INDICATOR
- INFORMATION AND ADVICE TYPE PROVIDED FOR FEMALE GENITAL MUTILATION
- INFORMATION AND ADVICE TYPE PROVIDED FOR NHS HEALTH CHECK
- INITIAL CONTACT INDICATOR
- INITIAL DIAGNOSIS CARE SETTING OR SERVICE FOR HIV
- MEDICAL STAFF TYPE SEEING PATIENT
- ~~MENTAL HEALTH PREDICTION AND DETECTION INDICATOR~~
- METASTATIC STATUS
- MULTIPROFESSIONAL OR MULTIDISCIPLINARY INDICATION CODE
- NEW HIV DIAGNOSIS IN UNITED KINGDOM INDICATOR

OTHER PERSON IN ATTENDANCE AT CARE CONTACT
OUTCOME OF ATTENDANCE
PARTNER NOTIFICATION CONSULTATION INDICATOR FOR SEXUAL HEALTH SERVICE
PATIENT EXPOSURE TO HIV
PATIENT HIV CARE STATUS
PATIENT TRIAL STATUS FOR CANCER
POST EXPOSURE PROPHYLAXIS INDICATOR
POSTNATAL CARE INDICATOR
PRE EXPOSURE PROPHYLAXIS ELIGIBILITY REASON
PRE EXPOSURE PROPHYLAXIS INDICATOR
PRE EXPOSURE PROPHYLAXIS STOPPED REASON
PREGNANCY INDICATOR FOR HIV
PSYCHIATRIC CARE INDICATOR FOR HIV
SIGNPOSTING TO SERVICE INDICATOR
SIGNPOSTING TO SERVICE TYPE FOR NHS HEALTH CHECK
SKIN TO SKIN CONTACT INDICATOR
SOCIAL WORKER CARE INDICATOR FOR HIV
SUBJECTIVE GLOBAL ASSESSMENT
THERAPY TYPE FOR IMPROVING ACCESS TO PSYCHOLOGICAL THERAPIES
TWO YEAR NEONATAL OUTCOMES ASSESSMENT NOT CARRIED OUT REASON

CATEGORY VALUED PERSON OBSERVATION

Change to Class: Changed Attributes

Attributes of this Class are:

ALCOHOL USE ASSESSED AS PROBLEMATIC INDICATOR FOR SEXUAL HEALTH SERVICE
ALCOHOL USE ASSESSED INDICATOR FOR SEXUAL HEALTH SERVICE
BREAST SCREENING HIGH RISK CATEGORY
CATEGORY VALUED PERSON OBSERVATION TYPE
MENTAL CATEGORY
MENTAL HEALTH ACT 2007 MENTAL CATEGORY
PERSON RISK FACTOR FOR SEXUALLY TRANSMITTED INFECTION

CLINIC OR FACILITY

Change to Class: Changed Attributes

Attributes of this Class are:

K CLINIC CODE
CLINIC TYPE FOR SEXUAL HEALTH SERVICE
EMERGENCY CARE FACILITY TYPE
FACILITY TYPE
JOINT CONSULTANT CLINIC FLAG

CONTRACEPTION

Change to Class: Changed Attributes

Attributes of this Class are:

CONDOMLESS SEX INDICATOR
CONTRACEPTION METHOD
CONTRACEPTION METHOD POST COITAL

PATIENT DIAGNOSIS

Change to Class: Changed Attributes

Attributes of this Class are:

ACCIDENT AND EMERGENCY DIAGNOSIS
BABY COMPLICATION AT BIRTH DIAGNOSIS
BASIS OF DIAGNOSIS FOR CANCER
BREAST CANCER INVASIVE STATUS

CEREBRAL PALSY TYPE CODE FOR NATIONAL NEONATAL DATA SET
CYTOMEGALOVIRUS DISEASE CODE
DIABETES TYPE FOR RENAL CARE
DIAGNOSIS SCHEME IN USE
FEMALE GENITAL MUTILATION TYPE 4 CODE
FETAL ANOMALY DIAGNOSIS
HISTOLOGY CONFIRMED NECROTISING ENTEROCOLITIS FOLLOWING LAPAROTOMY INDICATOR
HISTORY OF FEMALE GENITAL MUTILATION INDICATOR
HYPOXIC ISCHEMIC ENCEPHALOTHAPY GRADE
LIFE THREATENING SYMPTOMS AT DIAGNOSIS INDICATOR
LIVER CIRRHOSIS CAUSE TYPE
LIVER CIRRHOSIS TYPE
LONG TERM PHYSICAL HEALTH CONDITION INDICATOR FOR IMPROVING ACCESS TO PSYCHOLOGICAL THERAPIES
MATERNITY COMPLICATING MEDICAL DIAGNOSIS
MATERNITY FAMILY HISTORY DIAGNOSIS TYPE
MATERNITY MEDICAL DIAGNOSIS TYPE
NEONATAL ABSTINENCE SYNDROME OBSERVED INDICATOR
NEONATAL DIAGNOSIS
OBSTETRIC DIAGNOSIS
OTHER MYELODYSPLASIA SYMPTOMS AT DIAGNOSIS
PATIENT DIAGNOSIS CODING SIGNIFICANCE
PATIENT DIAGNOSIS CONFIRMED INDICATION CODE FOR SEXUAL HEALTH SERVICE
PATIENT DIAGNOSIS INDICATION FOR PRIMARY ANKLE REPLACEMENT
PATIENT DIAGNOSIS INDICATION FOR PRIMARY ELBOW REPLACEMENT
PATIENT DIAGNOSIS INDICATION FOR PRIMARY HIP REPLACEMENT
PATIENT DIAGNOSIS INDICATION FOR PRIMARY KNEE REPLACEMENT
PATIENT DIAGNOSIS INDICATION FOR PRIMARY SHOULDER REPLACEMENT
PATIENT DIAGNOSIS INDICATOR
PATIENT DIAGNOSIS SITE OF INFECTION FOR SEXUAL HEALTH SERVICE
PATIENT DIAGNOSIS TREATMENT PROVIDED INDICATION CODE FOR SEXUAL HEALTH SERVICE
PATIENT DIAGNOSIS TYPE FOR NHS HEALTH CHECK
POST HAEMORRHAGIC HYDROCEPHALUS OBSERVED DURING CRANIAL ULTRASOUND SCAN INDICATOR
PRESENT ON ADMISSION INDICATOR
PRIMARY CANCER SITE FOR CANCER FASTER DIAGNOSIS PATHWAY
PRIMARY DIAGNOSIS
PROVISIONAL DIAGNOSIS
RENAL DONOR DIAGNOSIS TYPE
RENAL LIVING DONOR DIAGNOSIS TYPE
RENAL PAEDIATRIC DIAGNOSIS TYPE
RENAL RECIPIENT CARDIOVASCULAR COMPLICATION TYPE
RENAL RECIPIENT DIAGNOSIS TYPE
SEIZURE OCCURRED INDICATOR
SEPSIS SUSPECTED INDICATOR
SEXUALLY TRANSMITTED INFECTION DIAGNOSIS SYMPTOMATIC INDICATOR
TRAUMATIC LESION OF GENITAL TRACT TYPE CODE
TUMOUR OR LESION LATERALITY

PERSON

Change to Class: Changed Attributes

Attributes of this Class are:

K PERSON IDENTIFIER
EX BRITISH ARMED FORCES INDICATOR
LOOKED AFTER CHILD INDICATOR
NATIONAL INSURANCE NUMBER
NEW SEX PARTNERS IN THE LAST THREE MONTHS INDICATOR
NUMBER OF SEX PARTNERS IN THE LAST THREE MONTHS CODE
PERSON BIRTH DATE
PERSON BIRTH TIME
PRISONER INDICATOR
SEX WORKER INDICATOR

YEAR OF BIRTH

PRESCRIBED ITEM

Change to Class: Changed Attributes

Attributes of this Class are:

- K PRESCRIBED ITEM IDENTIFIER
 - CYTOMEGALOVIRUS MEDICATION TYPE CODE
 - PERITONEAL DIALYSIS FLUID MANUFACTURERS NAME
 - PRE EXPOSURE PROPHYLAXIS DRUG REGIMEN CODE
 - PRESCRIBED DOSE
 - PRESCRIBED ITEM QUANTITY
 - PRESCRIBED ITEM QUANTITY FOR PRE EXPOSURE PROPHYLAXIS
 - PRESCRIBED NUMBER OF DOSES PER PERIOD
 - RENAL DIALYSIS MEDICATION TYPE
 - RENAL MEDICATION TYPE
 - THROMBOSIS PREVENTION DRUG TYPE FOR RENAL
-

SERVICE

Change to Class: Changed Attributes

Attributes of this Class are:

- K SERVICE TYPE
 - SERVICE OR TEAM TYPE FOR MENTAL HEALTH
 - SERVICE OR TEAM TYPE REFERRED TO FOR COMMUNITY CARE
 - SERVICE TYPE FOR CHLAMYDIA TESTING
 - SERVICE TYPE FOR SEXUAL HEALTH
-

SUBSTANCE

Change to Class: Changed Attributes

Attributes of this Class are:

- K SUBSTANCE IDENTIFIER
 - SEXUAL INTERCOURSE UNDER THE INFLUENCE OF SUBSTANCE INDICATOR
 - SUBSTANCE INJECTED IN THE LAST THREE MONTHS INDICATOR
 - SUBSTANCE INJECTED SHARED EQUIPMENT IN THE LAST THREE MONTHS INDICATOR
 - SUBSTANCE USE IN THE LAST THREE MONTHS INDICATOR
-

ACTIVITY DATE

Change to Attribute: Changed Dataset

Any [DATE](#) that is of relevance to an [ACTIVITY](#).

The specific nature of the [DATE](#) will be identified by the [ACTIVITY DATE TYPE](#).

ALCOHOL USE ASSESSED AS PROBLEMATIC INDICATOR FOR SEXUAL HEALTH SERVICE

Change to Attribute: New Attribute

An indication of whether Alcohol use was assessed as problematic by the [CARE PROFESSIONAL](#) for a [PERSON](#) attending a [Sexual Health Service](#).

National Codes:

- Y Yes - Alcohol use was assessed as problematic
- N No - Alcohol use not was assessed as problematic
- U Unknown ([PERSON](#) asked but does not know)
- Z Not Stated ([PERSON](#) asked but declined to give a response)

This attribute is also known by these names:

Context	Alias
plural	ALCOHOL USE ASSESSED AS PROBLEMATIC INDICATORS FOR SEXUAL HEALTH SERVICE

ALCOHOL USE ASSESSED AS PROBLEMATIC INDICATOR FOR SEXUAL HEALTH SERVICE

Change to Attribute: New Attribute

ALCOHOL USE ASSESSED AS PROBLEMATIC INDICATOR FOR SEXUAL HEALTH SERVICE

Data Elements:

ALCOHOL USE ASSESSED AS PROBLEMATIC INDICATOR (SEXUAL HEALTH SERVICE)

ALCOHOL USE ASSESSED INDICATOR FOR SEXUAL HEALTH SERVICE

Change to Attribute: New Attribute

An indication of whether Alcohol use was assessed by the [CARE PROFESSIONAL](#) for a [PERSON](#) attending a [Sexual Health Service](#).

National Codes:

- Y** Yes - Alcohol use was assessed by the [CARE PROFESSIONAL](#)
- N** No - Alcohol use was not assessed by the [CARE PROFESSIONAL](#)
- U** Unknown ([PERSON](#) asked but does not know)
- Z** Not Stated ([PERSON](#) asked but declined to provide a response)

This attribute is also known by these names:

Context	Alias
plural	ALCOHOL USE ASSESSED INDICATORS FOR SEXUAL HEALTH SERVICE

ALCOHOL USE ASSESSED INDICATOR FOR SEXUAL HEALTH SERVICE

Change to Attribute: New Attribute

ALCOHOL USE ASSESSED INDICATOR FOR SEXUAL HEALTH SERVICE

Data Elements:

ALCOHOL USE ASSESSED INDICATOR (SEXUAL HEALTH SERVICE)
--

CLINICAL CLASSIFICATION CODE

Change to Attribute: Changed Dataset

A unique clinical classification identifier for a [CODED CLINICAL ENTRY](#).

This could be [OPCS Classification of Interventions and Procedures \(OPCS-4\)](#) codes or [International Classification of Diseases \(ICD\)](#) codes.

See [Clinical Coding](#) for further information about the types of [CODED CLINICAL ENTRIES](#).

CLINICAL TERMINOLOGY CODE

Change to Attribute: Changed Dataset

A unique clinical terminology identifier for a [CODED CLINICAL ENTRY](#).

This could be [Read Coded Clinical Terms](#), [SNOMED CT](#) concepts or defined in the [National Interim Clinical Imaging Procedure Code Set](#).

See [Clinical Coding](#) for further information about the types of [CODED CLINICAL ENTRIES](#).

Note: [SNOMED CT](#) is the Information Standard for clinical terminology for use within the NHS; it is planned that in time this will be the only terminology used by the NHS.

CLINIC TYPE FOR SEXUAL HEALTH SERVICE

Change to Attribute: New Attribute

The type of CLINIC OR FACILITY providing a Sexual and Reproductive Health Service.

National Codes:

- 01 Specialist Clinic - Level 3 Genitourinary Medicine Service
- 02 Sexual and Reproductive Health Clinic - Level 2 Sexual Health Service
- 03 Online Clinic - Level 2 Sexual Health Service
- 04 General Medical Practitioner Practice Clinic - Level 2 Sexual Health Service
- 05 Prison Clinic - Level 2 Sexual Health Service
- 10 Other Clinic (not listed) - Level 2 Sexual Health Service
- 11 Other Clinic (not listed) - Level 1 Sexual Health Service

This attribute is also known by these names:

Context	Alias
plural	CLINIC TYPES FOR SEXUAL HEALTH SERVICE

CLINIC TYPE FOR SEXUAL HEALTH SERVICE

Change to Attribute: New Attribute

CLINIC TYPE FOR SEXUAL HEALTH SERVICE

Data Elements:

CLINIC TYPE (SEXUAL HEALTH SERVICE)

CONDOMLESS SEX INDICATOR

Change to Attribute: New Attribute

An indication of whether the PERSON attending a Sexual Health Service stated they had condomless sex with a partner.

National Codes:

- Y Yes - PERSON had condomless sex
- N No - PERSON did not have condomless sex
- U Unknown (PERSON asked but does not know)
- Z No Stated (PERSON asked but declined to give a response)

This attribute is also known by these names:

Context	Alias
plural	CONDOMLESS SEX INDICATORS

CONDOMLESS SEX INDICATOR

Change to Attribute: New Attribute

CONDOMLESS SEX INDICATOR

Data Elements:

CONDOMLESS SEX INDICATOR (PENETRATIVE SEX MALE SAME SEX PARTNERS IN THE LAST THREE MONTHS)
CONDOMLESS SEX INDICATOR (PENETRATIVE SEX OPPOSITE SEX PARTNERS FOR THE LAST TIME PERSON HAD SEX))
CONDOMLESS SEX INDICATOR (RECEPTIVE SEX MALE SAME SEX PARTNERS IN THE LAST THREE MONTHS)

CONSULTATION MEDIUM USED

Change to Attribute: Changed Dataset, Description

CONSULTATION MEDIUM USED identifies the communication mechanism used to relay information between the CARE PROFESSIONAL and the PERSON who is the subject of the consultation, during a CARE ACTIVITY.

The telephone or telemedicine consultation should directly support diagnosis and care planning and must replace a face to face Out-Patient Attendance Consultant, Clinic Attendance Nurse or Clinic Attendance Midwife, types of CARE ACTIVITY. A record of the telephone or telemedicine consultation must be retained in the PATIENT's records.

Telephone contacts solely for informing [PATIENTS](#) of results are excluded.

National Codes:

- 01 Face to face communication
- 02 Telephone
- 03 Telemedicine web camera
- 04 Talk type for a [PERSON](#) unable to speak
- 05 Email **
- 06 Short Message Service (SMS) - Text Messaging ***
- 98 ~~Other*~~
- 07 [On-line Triage****](#)
- 98 [Other*](#)

Notes:

- * National Code 98 'Other' is **only** used for the [Community Services Data Set](#), [Mental Health Services Data Set](#) and [Sexual and Reproductive Health Activity Data Set](#). It is **NOT** valid in any other data set including Commissioning Data Set version 6-2.
- ** National Codes 05 'Email' is **NOT** valid for Commissioning Data Set version 6-2.
- *** National Code 06 'Short Message Service (SMS) - Text Messaging' is **NOT** valid for Commissioning Data Set version 6-2 and the [HIV and AIDS Reporting Data Set](#).
- **** National Code 07 'On-line Triage' is **only** used for the [GUMCAD Sexually Transmitted Infection Surveillance System Data Set](#). It is **NOT** valid in any other data set including Commissioning Data Set version 6-2.

CONSULTATION TYPE

Change to Attribute: Changed Dataset

The type of consultation between the [CARE PROFESSIONAL](#) and the [PATIENT](#).

National Codes:

- 01 Initial Consultation
- 02 Follow-up Consultation

CONTRACEPTIVE SERVICE TYPE (RETIRED), renamed from **CONTRACEPTIVE SERVICE TYPE**

Change to Attribute: Changed Description, Name, status to Retired

The type of contraceptive [ACTIVITY](#) performed by the [GENERAL MEDICAL PRACTITIONER](#). **This item has been retired from the NHS Data Model and Dictionary.**

Classification: **The last live version of this item is available in the ?????? release of the NHS Data Model and Dictionary.**

- a. ~~Intrauterine device fitting and after care~~
- b. ~~Other~~

Access to this version can be obtained by emailing information.standards@nhs.net with "NHS Data Model and Dictionary - Archive Request" in the email subject line.

CONTRACEPTIVE SERVICE TYPE (RETIRED), renamed from **CONTRACEPTIVE SERVICE TYPE**

Change to Attribute: Changed Description, Name, status to Retired

- Changed Description
- Changed Name from Data_Dictionary.Attributes.C.Cons.CONTRACEPTIVE_SERVICE_TYPE to Retired.Data_Dictionary.Attributes.C.CONTRACEPTIVE_SERVICE_TYPE
- Retired CONTRACEPTIVE SERVICE TYPE

COUNTRY CODE

Change to Attribute: Changed Dataset

A unique code representing a [COUNTRY](#).

References:

- International Organisation for Standardisation website for the ISO 3166-1 standard
<http://www.iso.org/iso/home.htm>

Note:

This was [e-GIF](#) approved for use in NHS England.

[e-GIF](#) and the [Government Data Standards Catalogue](#) have been archived and are available for reference only.

ETHNIC CATEGORY CODE

Change to Attribute: Changed Dataset

The ethnicity of a [PERSON](#), as specified by the [PERSON](#).

Note: [ETHNIC CATEGORY](#) is the classification used for the 2001 census.

The [Office for National Statistics](#) has developed a further breakdown of the group from that given, which may be used locally.

National Codes:

White

- A British
- B Irish
- C Any other White background

Mixed

- D White and Black Caribbean
- E White and Black African
- F White and Asian
- G Any other mixed background

Asian or Asian British

- H Indian
- J Pakistani
- K Bangladeshi
- L Any other Asian background

Black or Black British

- M Caribbean
- N African
- P Any other Black background

Other Ethnic Groups

- R Chinese
- S Any other ethnic group

- Z Not stated

National code Z - Not Stated should be used where the [PERSON](#) has been given the opportunity to state their [ETHNIC CATEGORY](#) but chose not to.

FIRST ATTENDANCE

Change to Attribute: Changed Dataset

An indication of whether a [PATIENT](#) is making a first attendance or contact; or a follow-up attendance or contact and whether the [CONSULTATION MEDIUM USED](#) national code was 'Face to face communication' or 'Telephone' or 'Telemedicine web camera'.

A first attendance is the first in a series, or only attendance of an [APPOINTMENT](#) which took place regardless of how many previous [APPOINTMENTS](#) were made which did not take place for whatever reason. All subsequent attendances in the series which take place should be recorded as follow-up.

National Codes:

- 1 First attendance face to face
- 2 Follow-up attendance face to face
- 3 First telephone or telemedicine consultation

- 4 Follow-up telephone or telemedicine consultation
- 5 Referral To Treatment Clock Stop Administrative Event*

Note: *Referral to Treatment Clock Stop Administrative Event allows the [Secondary Uses Service](#) to build accurate [PATIENT PATHWAYS](#) for the reporting of 18 weeks activity. It flows through the [CDS V6-2 Type 020 - Outpatient Commissioning Data Set](#) structure. See [Referral To Treatment Clock Stop Administrative Event](#).

GENDER IDENTITY CODE FOR SEXUAL HEALTH

Change to Attribute: Changed Dataset, Description

The gender identity of a [PATIENT](#) as stated by the [PATIENT](#) at a [HIV Clinic Attendance](#) or [Genitourinary Consultant Clinic Attendance](#). The gender identity of a [PERSON](#) as stated by the [PERSON](#) at a [HIV Clinic Attendance](#) or [Genitourinary Consultant Clinic Attendance](#).

National Codes:

- 1 Male (including trans man)
- 2 Female (including trans woman)
- 3 Non-binary
- 4 ~~Other~~
- 4 Other (not listed)
- Z Not Stated ([PERSON](#) asked but declined to provide a response)

GENDER IDENTITY SAME AT BIRTH INDICATOR

Change to Attribute: Changed Dataset

An indication of whether the [PERSON](#)'s gender identity is the same as their gender assigned at birth.

National Codes:

- Y Yes - the [PERSON](#)'s gender identity is the same as their gender assigned at birth
- N No - the [PERSON](#)'s gender identity is not the same as their gender assigned at birth
- Z Not Stated ([PERSON](#) asked but declined to provide a response)

GEOGRAPHIC AREA CODE

Change to Attribute: Changed Dataset

The code for a [GEOGRAPHIC AREA](#).

HIV POSITIVE PARTNERS IN THE LAST THREE MONTHS INDICATOR FOR PENETRATIVE SEX MALE SAME SEX PARTNERS

Change to Attribute: New Attribute

An indication of whether penetrative sex male same sex partners in the last three months were HIV positive, reported by the [PERSON](#) attending a [Sexual Health Service](#).

National Codes:

- Y Yes - penetrative sex male same sex partners in the last three months were HIV positive
- N No - penetrative sex male same sex partners in the last three months were not HIV positive
- U Unknown - ([PERSON](#) asked but does not know)
- Z Not Stated - ([PERSON](#) asked but declined to provide a response)

This attribute is also known by these names:

Context	Alias
plural	HIV POSITIVE PARTNERS IN THE LAST THREE MONTHS INDICATORS FOR PENETRATIVE SEX MALE SAME SEX PARTNERS

HIV POSITIVE PARTNERS IN THE LAST THREE MONTHS INDICATOR FOR PENETRATIVE SEX MALE SAME SEX PARTNERS

Change to Attribute: New Attribute

HIV POSITIVE PARTNERS IN THE LAST THREE MONTHS INDICATOR FOR PENETRATIVE SEX MALE SAME SEX PARTNERS

Data Elements:

HIV POSITIVE PARTNERS IN LAST THREE MONTHS INDICATOR (PENETRATIVE SEX MALE SAME SEX PARTNERS)

LOCAL PATIENT IDENTIFIER

Change to Attribute: Changed Dataset

A number used to identify a **PATIENT** uniquely within a **Health Care Provider**. It may be different from the **PATIENT**'s casenote number and may be assigned automatically by the computer system.

Where care for NHS patients is sub-commissioned in the independent sector or overseas, the NHS commissioner PAS Number should be used. If no NHS PAS Number has been assigned the independent sector or overseas PAS Number should be used.

NEW SEX PARTNERS IN THE LAST THREE MONTHS INDICATOR

Change to Attribute: New Attribute

An indication of whether the **PERSON** attending a **Sexual Health Service** has reported having new sex partners in the last three months.

National Codes:

Y	Yes - the PERSON reported having new sex partners in the last three months
N	No - the PERSON reported not having new sex partners in the last three months
U	Unknown (PERSON asked and does not know)
Z	Not Stated (PERSON asked but declined to provide a response)

This attribute is also known by these names:

Context	Alias
plural	NEW SEX PARTNERS IN THE LAST THREE MONTHS INDICATORS

NEW SEX PARTNERS IN THE LAST THREE MONTHS INDICATOR

Change to Attribute: New Attribute

NEW SEX PARTNERS IN THE LAST THREE MONTHS INDICATOR

Data Elements:

NEW SEX PARTNERS IN LAST THREE MONTHS INDICATOR (FEMALE SAME SEX PARTNERS)

NEW SEX PARTNERS IN LAST THREE MONTHS INDICATOR (OPPOSITE SEX PARTNERS)

NUMBER OF SEX PARTNERS IN LAST THREE MONTHS CODE

Change to Attribute: New Attribute

The code to identify the number of sex partners in the last months as stated by the **PERSON** at an attending a **Sexual Health Service**.

National Codes:

01	0
02	1
03	2-4
04	5 and over
UU	Unknown (PERSON asked but does not know)
ZZ	Not Stated (PERSON asked but declined to provide a response)

This attribute is also known by these names:

Context	Alias
plural	NUMBER OF SEX PARTNERS IN LAST THREE MONTHS CODES

NUMBER OF SEX PARTNERS IN LAST THREE MONTHS CODE

Change to Attribute: New Attribute

NUMBER OF SEX PARTNERS IN LAST THREE MONTHS CODE

Data Elements:

NUMBER OF SEX PARTNERS IN LAST THREE MONTHS CODE (FEMALE SAME SEX PARTNERS)
NUMBER OF SEX PARTNERS IN LAST THREE MONTHS CODE (MALE SAME SEX PARTNERS)
NUMBER OF SEX PARTNERS IN LAST THREE MONTHS CODE (OPPOSITE SEX PARTNERS)

ORGANISATION IDENTIFIER

Change to Attribute: Changed Dataset

A unique identifier for an [ORGANISATION](#).

Note:

- [ORGANISATION IDENTIFIERS](#) are governed by the fundamental standard for "Health and Social Care Organisation Reference Data" (HSC Org Ref Data).
- The standard only relates to [ORGANISATION IDENTIFIERS](#) which are maintained and published by the [Organisation Data Service \(ODS\)](#). See [Health and Social Care Organisation Reference Data](#).

The Format/Length of a published code for an:

- [Organisation](#) is min an3 max an8
- [Organisation Site](#) is min an5 max an9.

[ORGANISATION CODE](#) will be replaced with [ORGANISATION IDENTIFIER](#), which is the most recent approved national information standard to describe the required definition.

ORGANISATION SITE CODE

Change to Attribute: Changed Dataset

[ORGANISATION SITE CODE](#) will be replaced with [ORGANISATION IDENTIFIER](#), which is the most recent approved national information standard to describe the required definition.

An [ORGANISATION SITE CODE](#) is a code which identifies an [Organisation Site](#) uniquely.

Note: Only [ORGANISATION SITE CODES](#) which have been notified to and issued by the [Organisation Data Service](#) may be used.

Notes:

- [Organisation Data Service](#) codes can be downloaded from [Technology Reference Data Update Distribution \(TRUD\)](#)
- [Organisation Data Service](#) contact details can be found at [Contact Details](#).

ORGANISATION SITE CODING FRAMES

- All NHS [Organisation Sites](#) are coded using coding frames, as shown in the tables below:

Character Position	1	2	3	4	5	6	7	8	9
Format	a/n	a/n	a/n	a/n	a/n	a/n	a/n	a/n	a/n
A Frame	Organisation Type Identifier			Organisation Identifier		Site or Sub-Division Identifier			
B Frame	Organisation Type Identifier	Organisation Identifier		Site or Sub-Division Identifier					

C Frame	Organisation Type Identifier	Organisation Identifier	Site or Sub-Division Identifier				
D Frame	Organisation Type Identifier	Practice Identifier			Branch Surgery Identifier		
F Frame	Organisation Type Identifier	Organisation Identifier					
H Frame	Organisation Type Identifier		Organisation Identifier				
I Frame	Organisation Type Identifier	Organisation Identifier					
J Frame	Organisation Type Identifier	Organisation Identifier					
K Frame	Organisation and Organisation Type Identifier		Organisation Site Identifier				
L Frame	Organisation Type Identifier <i>and</i> Site or Sub-Division Identifier						

A Frame:

Example

Local Service Provider Site e.g. LSP0101

- LSP = Org Type Identifier
- 01 = Organisation Identifier
- 01 = Site or Sub-Division Identifier

B Frame:

Example

Care Trust Site e.g. TAK01

- T = Organisation Type Identifier
- AK = Organisation Identifier
- 01 = Site or Sub-Division Identifier

Also:

Government Department Site	e.g. XDA01
High Level Health Geography Site, e.g. NHS England (Region Local Office) site	e.g. Q7201
Local Authority Site	e.g. 000AA
Local Health Board (Wales) Site	e.g. 7A101
NHS Trust Site	e.g. RH802
Other Statutory Authority (OSA) Site	e.g. X1601
	e.g. Q3001

C Frame:

Example

[Independent Sector Healthcare Provider \(ISHP\)](#) Site e.g. NV701

- NV = Organisation Site Type Identifier
 - 7 = Organisation Identifier
 - 01 = Site or Sub-Division Identifier
-

D Frame**Example**

[GP Practice](#) Branch Surgery: e.g. H81010002

- H (and length of code) = Organisation Identifier
 - 81010 = Organisation Identifier (parent GP Practice)
 - 002 = Branch Surgery Identifier
-

F Frame**Example**

[Commissioning Support Unit](#) Site: e.g. 0AA01

- 0 = Organisation Type Identifier
 - AA01 = Organisation Identifier
-

H Frame**Example**

Prison: e.g. YDE01

- YDE = Organisation Type Identifier
 - 01 = Site or Sub-Division Identifier
-

I Frame**Example**

[Optical Site](#): e.g. TP01A

- TP = Organisation Type Identifier
 - 01A = Site or Sub-Division Identifier
-

J Frame**Example**

[Care Home](#) Site: e.g. VN01A

- VN = Organisation Type Identifier
- 01A = Site or Sub-Division Identifier

Also:

Health Observatory

e.g. XP001

[Primary Healthcare Directorate \(Isle of Man\)](#) Site

e.g. YK101

K Frame**Example**

[Clinical Commissioning Group \(CCG\)](#) Site e.g. 11AAA - 99YZZ

- 11A = Organisation and Organisation Type Identifier
 - AA = Organisation Site Identifier
-

L Frame**Example**

[Special Health Authority \(SpHA\)](#) Site: e.g. T115A

The structure and format of [ORGANISATION SITE CODES](#) maintained by the [Organisation Data Service](#), [NHS Prescription Services](#) and other agencies are detailed in the tables below.

NHS ORGANISATION SITE CODES TABLES

Coding Formats

Table 1: CODING FORMATS FOR ORGANISATION SITES IN ENGLAND AND WALES

Organisation Site Type	Frame Type	Character Position									Code allocated by:	Notes/Comments	
		1	2	3	4	5	6	7	8	9			
	See Coding Frames Table												
Care Home Site	J	V	L, M or N	A-9	A-9	A-9						ODS	E.g. VN01A, VM01A, VL01A
Care Trust Site	B	T	A-Y	A-Y	A-9	A-9						ODS	First three characters denote owning Care Trust E.g. TAK01
Clinical Commissioning Group (CCG) Site	K	0-9	0-9	A-Y	A-Y	A-Y						ODS	First three characters denote owning Clinical Commissioning Group E.g. 11AAA - 99YZZ
Commissioning Support Unit (CSU) Site	F	0	A-Y	A-Y	A-9	A-9						ODS	E.g. 0AA01
Executive Agency Site	N/A See Note	X	0-9	0-9	0-9	0-9						ODS	First three characters denote Executive Agency E.g. X0901
Government Department Site	B	X	A-Y	A-Y	0-9	0-9						ODS	First three characters denote Government Department E.g. XDA01
GP Practice Branch Surgery - England and Wales	D	A-H, J-N, P, W & Y	0-9	0-9	0-9	0-9	0-9	0-9	0-9	0-9		ODS	First 6 characters denote parent practice. Char 1 = W for Welsh GP Practice .

												All other values represent English GP Practices E.g. H81010002
Health Observatory	J	X	P	0-9	0-9	0-9					ODS	E.g. XP001
High Level Health Geography Site, e.g. NHS England (Region Local Office) site	B	Q	A-9	A-9	A-9	A-9					ODS	E.g. Q7201
Independent Sector Healthcare Provider (ISHP) Site	C	A, B, D, G, I, K, L, M, N, O, S, U, V, W	A-Y	A-Y, 0-9	A-Y, 0-9	A-Y, 0-9					ODS	First three characters denote owning Independent Sector Healthcare Provider (ISHP) E.g. NV701 Note: The A-Y range includes all letters except Z
Local Authority (LA) Site	B	0-9	0-9	0-9	A-Z	A-Z					ODS	First three characters denote parent Local Authority E.g. 000AA
Local Health Board (Wales) Site	B	7	A-9	A-9	A-9	A-9					ODS	First three characters denote owning NHS Trust E.g. 7A101
Local Service Provider Site	A	L	S	P	0-9	0-9	0-9	0-9			ODS	First five characters denote owning Local Service Provider E.g. LSP0101
NHS Trust Site	B	R	A-9	A-9	A-9	A-9					ODS	First three characters denote owning NHS Trust E.g. RH802
Optical Site	I	T	P or Q	0-9	A-9	A-9					ODS	E.g. TP01A, TQ01A

Other Statutory Authority (OSA) Site	B	X	0-9	0-9	0-9	0-9						ODS	First three characters denote owning Other Statutory Authority E.g. X1601
Primary Care Trust (PCT) Site	B	5	A-9	A-9	A-9	A-9						ODS	First three characters denote owning Primary Care Trust E.g. 5CT49 All Primary Care Trusts closed 31 March 2013
Special Health Authority (SpHA) Site	L	T	1	0-9	0-9	A-Y, 1-9						ODS	The characters do NOT denote any ownership. E.g. T115A
Strategic Health Authority (SHA) Site	B	Q	A-9	A-9	A-9	A-9						ODS	First three characters denote owning SHA Trust E.g. Q3001 All Strategic Health Authorities closed 31 March 2013 - from 1 April 2013 referred to as High Level Health Geography Site

Note: Codes for Executive Agency, Executive Agency Programme, Executive Agency Site and Executive Agency Programme Department do not easily fit into the coding frames as shown above and are therefore not included. This is due to their unusual structure in that there are more hierarchical 'tiers' than with other organisations.

Executive Agency and Executive Agency Programme are both considered Organisation level entities, although each Programme does have a relationship to an Executive Agency. Executive Agency codes are three characters long. Executive Agency Programme codes are six, and their first three characters are the same as the Executive Agency they are associated to.

Department codes of eight characters long can then be allocated underneath a Programme code (sharing the first six characters). Executive Agency Site codes of five characters long can be allocated under an Executive Agency code (and share the first three characters).

Note: A-9 indicates that characters A-Z and 0-9 are valid: except B, I, O, S, U and Z (to avoid ambiguity). This applies to all [ORGANISATION SITE CODES](#) in the Coding Format Table above except [Independent Sector Healthcare Provider \(ISHP\)](#) sites.

Table 2: CODING FORMATS FOR ORGANISATION SITES IN OTHER HOME COUNTRIES

Organisation Site Type	Frame Type	Character Position									Code allocated by:	Notes/Comments
	See Coding Frames Table	1	2	3	4	5	6	7	8	9		

Primary Healthcare Directorate (Isle of Man) Site	J	Y	K	A-9	A-9	A-9						ODS	E.g. YK101
---	---	---	---	-----	-----	-----	--	--	--	--	--	---------------------	------------

Note: A-9 indicates that characters A-Z and 0-9 are valid: except B, I, O, S, U and Z (to avoid ambiguity).

PARTNER NOTIFICATION CONSULTATION INDICATOR FOR SEXUAL HEALTH SERVICE

Change to Attribute: New Attribute

An indication of whether the consultation for a [Sexual Health Service](#) is as a result of a partner notification.

National Codes:

- Y Yes - the consultation is as a result of a partner notification
- N No - the consultation is not as a result of a partner notification

This attribute is also known by these names:

Context	Alias
plural	PARTNER NOTIFICATION CONSULTATION INDICATORS FOR SEXUAL HEALTH SERVICE

PARTNER NOTIFICATION CONSULTATION INDICATOR FOR SEXUAL HEALTH SERVICE

Change to Attribute: New Attribute

PARTNER NOTIFICATION CONSULTATION INDICATOR FOR SEXUAL HEALTH SERVICE

Data Elements:

PARTNER NOTIFICATION CONSULTATION INDICATOR (SEXUAL HEALTH SERVICE)

PATIENT DIAGNOSIS CONFIRMED INDICATION CODE FOR SEXUAL HEALTH SERVICE

Change to Attribute: New Attribute

The type of [PATIENT DIAGNOSIS](#) confirmed at a [Sexual Health Service](#).

National Codes:

- 01 [PATIENT DIAGNOSIS](#) - confirmed at this [Sexual Health Service](#)
- 02 [PATIENT DIAGNOSIS](#) - confirmed at another [Sexual Health Service](#)
- 03 [PATIENT DIAGNOSIS](#) - initial reactive diagnosis

This attribute is also known by these names:

Context	Alias
plural	PATIENT DIAGNOSIS CONFIRMED INDICATION CODES FOR SEXUAL HEALTH SERVICE

PATIENT DIAGNOSIS CONFIRMED INDICATION CODE FOR SEXUAL HEALTH SERVICE

Change to Attribute: New Attribute

PATIENT DIAGNOSIS CONFIRMED INDICATION CODE FOR SEXUAL HEALTH SERVICE

Data Elements:

PATIENT DIAGNOSIS CONFIRMED INDICATION CODE (SEXUAL HEALTH SERVICE)

PATIENT DIAGNOSIS SITE OF INFECTION FOR SEXUAL HEALTH SERVICE

Change to Attribute: New Attribute

The site of infection for the [PATIENT DIAGNOSIS](#) at a [Sexual Health Service](#).

National Codes:

- 01 Genital
- 02 Rectal
- 03 Pharyngeal
- 04 Occular
- 96 Other (not listed)

This attribute is also known by these names:

Context	Alias
plural	PATIENT DIAGNOSIS SITES OF INFECTION FOR SEXUAL HEALTH SERVICE

PATIENT DIAGNOSIS SITE OF INFECTION FOR SEXUAL HEALTH SERVICE

Change to Attribute: New Attribute

PATIENT DIAGNOSIS SITE OF INFECTION FOR SEXUAL HEALTH SERVICE

Data Elements:

PATIENT DIAGNOSIS SITE OF INFECTION (SEXUAL HEALTH SERVICE)

PATIENT DIAGNOSIS TREATMENT PROVIDED INDICATION CODE FOR SEXUAL HEALTH SERVICE

Change to Attribute: New Attribute

An indication of whether a treatment has been provided for the PATIENT DIAGNOSIS at a Sexual Health Service and the reason why it has not been provided.

National Codes:

- 01 Yes - treatment provided
- 02 No - treatment not required
- 03 No - referred elsewhere for treatment
- 04 No - PATIENT refused treatment
- 05 No - PATIENT walked out

This attribute is also known by these names:

Context	Alias
plural	PATIENT DIAGNOSIS TREATMENT PROVIDED INDICATION CODES FOR SEXUAL HEALTH SERVICE

PATIENT DIAGNOSIS TREATMENT PROVIDED INDICATION CODE FOR SEXUAL HEALTH SERVICE

Change to Attribute: New Attribute

PATIENT DIAGNOSIS TREATMENT PROVIDED INDICATION CODE FOR SEXUAL HEALTH SERVICE

Data Elements:

PATIENT DIAGNOSIS TREATMENT PROVIDED INDICATION CODE (SEXUAL HEALTH SERVICE)
--

PERSON RISK FACTOR FOR SEXUALLY TRANSMITTED INFECTION

Change to Attribute: New Attribute

The risk factor of a PERSON for a Sexually Transmitted Infection identified at a Sexual Health Service.

National Codes:

- 1 Prisoner
- 2 Sex Worker

This attribute is also known by these names:

Context	Alias
plural	PERSON RISK FACTORS FOR SEXUALLY TRANSMITTED INFECTION

PERSON RISK FACTOR FOR SEXUALLY TRANSMITTED INFECTION

Change to Attribute: New Attribute

PERSON RISK FACTOR FOR SEXUALLY TRANSMITTED INFECTION

Data Elements:

PERSON RISK FACTOR (SEXUALLY TRANSMITTED INFECTION)

PERSON STATED GENDER CODE

Change to Attribute: Changed Dataset

The gender of a [PERSON](#).

[PERSON STATED GENDER CODE](#) is self declared or inferred by observation for those unable to declare their [PERSON STATED GENDER](#).

National Codes:

- 1 Male
- 2 Female
- 9 Indeterminate (unable to be classified as either male or female)

[PERSON GENDER CODE](#) will be replaced with [PERSON STATED GENDER CODE](#) or [PERSON PHENOTYPIC SEX CLASSIFICATION](#), which is the most recent approved national information standard to describe the required definition.

PERSON STATED SEXUAL ORIENTATION CODE

Change to Attribute: Changed Dataset

The [PERSON STATED SEXUAL ORIENTATION](#) of a [PERSON](#).

[SNOMED CT Subset](#) Metadata:

- Subset Name: Sexual orientation findings
- Subset Original Id: 74781000000131
- Refset FSN: Sexual orientation findings simple reference set (foundation metadata concept)
- Refset Id: 999003081000000103

For further details relating to the [SNOMED CT Subset](#) Metadata, see the [Data Dictionary for Care \(DD4C\)](#) website at: [Sexual orientation findings](#).

National Codes:

- 1 Heterosexual or Straight
- 2 Gay or Lesbian
- 3 Bisexual
- 4 Other sexual orientation not listed
- U [PERSON](#) asked and does not know or is not sure
- Z Not Stated ([PERSON](#) asked but declined to provide a response)

[SEXUAL ORIENTATION CODE](#) will be replaced with [PERSON STATED SEXUAL ORIENTATION CODE](#), which is the most recent approved national information standard to describe the required definition.

PRE EXPOSURE PROPHYLAXIS DRUG REGIMEN CODE

Change to Attribute: New Attribute

The Pre Exposure Prophylaxis [Drug Regimen](#) assigned to a [PATIENT](#) attending a [Sexual Health Service](#).

National Codes:

- 01 Daily (or nearly daily)
- 02 Event based (coital)
- UU Unknown ([PATIENT](#) asked but does not know)
- ZZ Not Stated ([PATIENT](#) asked but declined to provide a response)

This attribute is also known by these names:

Context	Alias
plural	PRE EXPOSURE PROPHYLAXIS DRUG REGIMEN CODES

PRE EXPOSURE PROPHYLAXIS DRUG REGIMEN CODE

Change to Attribute: New Attribute

PRE EXPOSURE PROPHYLAXIS DRUG REGIMEN CODE

Data Elements:

PRE EXPOSURE PROPHYLAXIS DRUG REGIMEN CODE
--

PRE EXPOSURE PROPHYLAXIS ELIGIBILITY REASON

Change to Attribute: New Attribute

The reason why the PATIENT is eligible for Pre Exposure Prophylaxis (PrEP) as determined by the CARE PROFESSIONAL at an attendance for a Sexual Health Service.

National Codes:

- 01 MSM (Men who have sex with Men) or Transgender Woman
- 02 HIV Positive Partner
- 96 Other (high risk)

This attribute is also known by these names:

Context	Alias
plural	PRE EXPOSURE PROPHYLAXIS ELIGIBILITY REASONS

PRE EXPOSURE PROPHYLAXIS ELIGIBILITY REASON

Change to Attribute: New Attribute

PRE EXPOSURE PROPHYLAXIS ELIGIBILITY REASON

Data Elements:

PRE EXPOSURE PROPHYLAXIS ELIGIBILITY REASON

PRE EXPOSURE PROPHYLAXIS OFFER STATUS CODE

Change to Attribute: New Attribute

The status of an offer of Pre Exposure Prophylaxis to a PATIENT attending a Sexual Health Service.

National Codes:

- 01 Offer accepted
- 02 Offer declined - PATIENT choice
- 03 Offer declined - obtained at another source

This attribute is also known by these names:

Context	Alias
plural	PRE EXPOSURE PROPHYLAXIS OFFER STATUS CODES

PRE EXPOSURE PROPHYLAXIS OFFER STATUS CODE

Change to Attribute: New Attribute

PRE EXPOSURE PROPHYLAXIS OFFER STATUS CODE

Data Elements:

PRE EXPOSURE PROPHYLAXIS OFFER STATUS CODE
--

PRE EXPOSURE PROPHYLAXIS STOPPED REASON

Change to Attribute: New Attribute

The reason Pre Exposure Prophylaxis was stopped for a PATIENT attending a Sexual Health Service.

National Codes:

- 01 Adverse Effect
- 02 HIV Acquisition
- 03 PATIENT Choice
- 04 No Longer Eligible
- 96 Other (not listed)
- UU Unknown (PATIENT asked but does not know)
- ZZ Not Stated (PATIENT asked but declined to provide a response)

This attribute is also known by these names:

Context	Alias
plural	PRE EXPOSURE PROPHYLAXIS STOPPED REASONS

PRE EXPOSURE PROPHYLAXIS STOPPED REASON

Change to Attribute: New Attribute

PRE EXPOSURE PROPHYLAXIS STOPPED REASON

Data Elements:

<u>PRE EXPOSURE PROPHYLAXIS STOPPED REASON</u>
--

PRESCRIBED ITEM QUANTITY FOR PRE EXPOSURE PROPHYLAXIS

Change to Attribute: New Attribute

The amount of Pre Exposure Prophylaxis tablets prescribed to a PATIENT attending a Sexual Health Service.

National Codes:

- 01 30 Tablets
- 02 60 Tablets
- 03 90 Tablets
- 96 Other (not listed)
- UU Unknown (PATIENT asked but does not know)
- ZZ Not Stated (PATIENT asked but declined to give a response)

This attribute is also known by these names:

Context	Alias
plural	PRESCRIBED ITEM QUANTITIES FOR PRE EXPOSURE PROPHYLAXIS

PRESCRIBED ITEM QUANTITY FOR PRE EXPOSURE PROPHYLAXIS

Change to Attribute: New Attribute

PRESCRIBED ITEM QUANTITY FOR PRE EXPOSURE PROPHYLAXIS

Data Elements:

<u>PRESCRIBED ITEM QUANTITY (PRE EXPOSURE PROPHYLAXIS)</u>
--

SERVICE TYPE

Change to Attribute: Changed Description

The type of SERVICE.

National Codes:

- 01 [Ambulance Service](#)
- 02 [Cancer Service](#)
- 03 [Community Health Service](#)
- 04 [Consultant Led Service](#)
- 05 [Direct Access Service](#)
- 06 Enhanced Sexual Health Service (Retired November 2014)
- 07 [HIV Service](#)
- 08 [Hospital At Home Service](#)
- 09 [Improving Access to Psychological Therapies Service](#)
- 10 [Interface Service](#)
- 11 [Non-Consultant Led Service](#)
- 12 Professional Staff Group Service (Retired 01 January 2016)
- 13 [Sexual and Reproductive Health Service](#)
- 14 [Stop Smoking Service](#)
- 15 Contraceptive Service (Retired 01 April 2014)
- 16 [Radiotherapy Service](#)
- 17 [Sexual Health Service](#)
- 18 [Mental Health Service](#)
- 19 [Regional Clinical Genetics Service](#)
- 20 [Children and Young People's Mental Health Service](#)
- 21 [Screening Service](#)
- ?? [Sexually Transmitted Infection Service](#)

SERVICE TYPE FOR SEXUAL HEALTH

Change to Attribute: New Attribute

The type of [SERVICE](#) provided at a [Sexual Health Service](#).

National Codes:

- 01 [Integrated Sexually Transmitted Infection Service](#) and [Sexual and Reproductive Health Service](#)
- 02 [Sexually Transmitted Infection Service](#)
- 03 [Sexual and Reproductive Health Service](#)
- 04 [HIV Service](#)
- 96 Other (not listed)

This attribute is also known by these names:

Context	Alias
plural	SERVICE TYPES FOR SEXUAL HEALTH

SERVICE TYPE FOR SEXUAL HEALTH

Change to Attribute: New Attribute

SERVICE TYPE FOR SEXUAL HEALTH

Data Elements:

SERVICE TYPE (SEXUAL HEALTH)
--

SEXUAL HEALTH AND HIV ACTIVITY PROPERTY TYPE

Change to Attribute: Changed Dataset, Description

The medical condition or reason for a [Sexual Health and HIV Episode](#).

National Codes:

Diagnosis and/or treatment of infection or disease	
Code	Description
A1	Primary syphilis
A2	Secondary syphilis
A3	Early latent syphilis
A4	Cardiovascular syphilis

A5	Neurosyphilis
A6	All other late and latent syphilis
A7A	Congenital syphilis
A10	Ocular syphilis
A11	Otosyphilis
B	Gonorrhoea
C1	Chancroid
C2	Lymphogranuloma venereum
C2	Lymphogranuloma venereum (LGV)
C3	Donovanosis
C4	Chlamydial infection
C4N	Non-specific genital infection (NSGI)
C5A	Pelvic inflammatory disease and epididymitis
C5A	Pelvic inflammatory disease (PID) and epididymitis
C5B	Ophthalmia neonatorum
C6A	Trichomoniasis
C6B	Anaerobic/Bacterial vaginosis and anaerobic balanitis
C6C	Other vaginosis/vaginitis/ balanitis
C7	Anogenital candidosis
C7A	Anogenital candidosis
C8	Scabies
C9	Pediculosis pubis
C10A	Anogenital Herpes simplex: first episode
C10B	Anogenital Herpes simplex: recurrence
C11A	Anogenital warts infection: first episode
C11D	Anogenital warts infection: recurrence
C10A	Anogenital Herpes simplex: First episode
C10B	Anogenital Herpes simplex: Recurrent episode
C11A	Anogenital warts infection: First episode
C11D	Anogenital warts infection: Recurrent episode
C12	Molluscum contagiosum
C13	Viral hepatitis B (HbsAg positive): First diagnosis
C14	Viral hepatitis C: first diagnosis
C15	Viral hepatitis A: acute infection
C14	Viral hepatitis C: First diagnosis
C15	Viral hepatitis A: Acute infection
C16	Mycoplasma genitalium
D2A	Urinary Tract Infection
D2B	Other conditions requiring treatment at Level 3 Genitourinary Medicine Services
H	HIV positive - Previously Diagnosed
H1	New HIV diagnosis
H1A	New HIV diagnosis: Acute
H1B	New HIV diagnosis: Late infection(AIDS defined)
H2	Attendance for HIV-related care
P4A	Cervical cytology: minor abnormality
P4B	Cervical cytology: major abnormality
Sexual Health Services Provided To record PATIENTS receiving Sexual Health Services or undergoing tests.	
T1	Chlamydia test
T2	Chlamydia and gonorrhoea tests
T3	Chlamydia, gonorrhoea and syphilis tests
T4	Full sexual health screen including HIV antibody test
T4	Chlamydia, gonorrhoea, syphilis and HIV antibody tests
T5	Herpes Simplex Virus (HSV) Test
T6	Hepatitis A/B/C Test
TS	Microscopy
TT	3 Site Testing (chlamydia and gonorrhoea)
T7	Syphilis and HIV Testing
T8	Self sampling (urinalysis/swabs) without Health Care worker consultation
T8	Self sampling (urinalysis/swabs) without Health Care worker (HCW) consultation
T9	STI testing not required/appropriate
T10	Rapid testing (STI and/or HIV)

T11	Chlamydia test declined
T12	Mycoplasma genitalium test
O20	Hepatitis A vaccination: 1st dose
O21	Hepatitis A vaccination: Subsequent dose
O22	Hepatitis A immune
O23	Partner notification related attendance: Hepatitis A contact
O31	PrEP eligibility criteria 1: MSM/transgender woman
O32	PrEP eligibility criteria 2: HIV positive partner
O33	PrEP eligibility criteria 3: Other high risk
O41	PrEP regimen: Starting or continuing daily Prep
O42	PrEP regimen: Starting or continuing event based Prep
O43	PrEP regimen: Continued through other source
O44	PrEP regimen: Offered and declined
O45	PrEP regimen: Stopped
O51	PrEP prescription: 30 tablets
O52	PrEP prescription: 60 tablets
O53	PrEP prescription: 90 tablets
O60	PrEP patient characteristic: Transgender
P1A	Human Immunodeficiency Virus (HIV) antibody test (no sexual health screen)
P1B	Human Immunodeficiency Virus (HIV) antibody test offered and refused
P1C	HIV test inappropriate
P2A	Hepatitis B vaccination: 1st dose
P2B	Hepatitis B vaccination: 2nd dose
P2C	Hepatitis B vaccination: 3rd dose
P2D	Hepatitis B vaccination: 4th dose
P2E	Hepatitis B vaccination: Booster
P2I	Hepatitis B immune
P3	CONTRACEPTION (excluding condom provision)
P3	CONTRACEPTION and family planning advice (excluding condom provision)
P4	Cervical cytology done
REF1	Referral from Chlamydia Screening Programme
REF2	Referral from Level 2 Sexual Health Service
REF2	Referral to a Level 3 Genitourinary Medicine Service
REF3	Referral from home testing/sampling service
SG1	<i>Shigella flexneri</i>
SG2	<i>Shigella sonnei</i>
SG1	<i>Shigella flexneri</i> (group B)
SG2	<i>Shigella sonnei</i> (group D)
SG3	<i>Shigella</i> other/unspecified
SRH	Sexual and Reproductive Health PATIENT
W1	HPV vaccination: 1st dose
W2	HPV vaccination: 2nd dose
W3	HPV vaccination: 3rd dose
PN	Partner notification initiated
PNC	Partner notification: Chlamydia
PNG	Partner notification: Gonorrhoea
PNH	Partner notification: HIV
PNN	Partner notification: Non-specific genital infection
PNP	Partner notification: PID/Epididymitis
PNS	Partner notification: Syphilis
PNT	Partner notification: Trichomoniasis/vaginosis/vaginitis/balanitis/candidosis
W4	HPV vaccination: offered and declined
W5	HPV vaccination: previously received in full
PN	Partner notification initiated related attendance
PNC	Partner notification related attendance: Chlamydia contact
PNG	Partner notification related attendance: Gonorrhoea contact
PNH	Partner notification related attendance: HIV contact
PNN	Partner notification related attendance: Non-specific genital infection contact
PNP	Partner notification related attendance: PID/Epididymitis contact
PNS	Partner notification related attendance: Syphilis contact
PNT	Partner notification related attendance: Trichomoniasis contact
PR1	Pregnant 1-12 weeks

PR2	Pregnant 13-28 weeks
PR3	Pregnant 39-40 weeks
PR3	Pregnant 29-40 weeks
PEPS	Post exposure prophylaxis after sexual exposure (PEPSE)
D3	Other Sexual Health and HIV Episodes not requiring treatment
O11- O99	Research/New/Urgent reporting
40	Sexual Assault (Acute Presentation)
41	Sexual Assault (Non - acute Presentation)
O11- O99	Research/New/Urgent reporting (Retired ??????)
40	Sexual Assault (Acute presentation)
41	Sexual Assault (Non - acute presentation)
Findings	
CSE1	Child sexual exploitation : concerns raised at internal assessment
CSE2	Child sexual exploitation : concerns raised with internal safeguarding professionals
CSE3	Child sexual exploitation : referred to external safeguarding professionals
DV	Concern of domestic violence (or abuse)
FGM	Female genital mutilation (of any type)
Special PATIENT Groups To record additional information on certain PATIENT groups receiving Sexual Health Services or undergoing tests. Codes to be reported separately at each FIRST ATTENDANCE .	
Z	Prisoner
SW	Sex Worker
Suffixes to Codes To record additional information about the PATIENT 's presentation or a Sexual Health Service given. This information may be collected through the use of suffixes which can be applied to the SEXUAL HEALTH AND HIV ACTIVITY PROPERTY TYPE . Where appropriate, multiple suffixes can be used on the same SEXUAL HEALTH AND HIV ACTIVITY PROPERTY TYPE . The suffixes and the codes with which they can be used are given below. These codes are appended to the SEXUAL HEALTH AND HIV ACTIVITY PROPERTY TYPE .	
R	Rectal infection
O	Pharyngeal infection
X	Diagnosed previously elsewhere
X	Previously diagnosed elsewhere
M	Medication given
Q	Quadrivalent HPV vaccine
Permissible Code Permutations Using Suffixes	
A - Syphilis	
A1X	Primary syphilis - diagnosed elsewhere
A2X	Secondary syphilis - diagnosed elsewhere
A3X	Early latent syphilis - diagnosed elsewhere
A4X	Cardiovascular syphilis - diagnosed elsewhere
A5X	Neurosyphilis syphilis - diagnosed elsewhere
A6X	All other late and latent syphilis - diagnosed elsewhere
A7AX	Congenital syphilis - diagnosed elsewhere
A1X	Primary syphilis - previously diagnosed elsewhere
A2X	Secondary syphilis - previously diagnosed elsewhere
A3X	Early latent syphilis - previously diagnosed elsewhere
A4X	Cardiovascular syphilis - previously diagnosed elsewhere
A5X	Neurosyphilis syphilis - previously diagnosed elsewhere
A6X	All other late and latent syphilis - previously diagnosed elsewhere
A7AX	Congenital syphilis - previously diagnosed elsewhere
B - Gonorrhoea	
BR	Rectal infection
BO	Pharyngeal infection
BX	Diagnosed previously elsewhere
BM	Medication given
BRX	Rectal infection, Diagnosed previously elsewhere
BRM	Rectal infection, Medication given-
BOX	Pharyngeal infection, Diagnosed previously elsewhere-

BOM	Pharayneal infection, Medication given-
BR	Gonorrhoea - rectal infection
BO	Gonorrhoea - pharyngeal infection
BX	Gonorrhoea - previously diagnosed elsewhere
BM	Gonorrhoea - medication given
BRX	Gonorrhoea - rectal infection, previously diagnosed elsewhere
BRM	Gonorrhoea - rectal infection, medication given
BOX	Gonorrhoea - pharyngeal infection, previously diagnosed elsewhere
BOM	Gonorrhoea - Pharyngeal infection, medication given
	C4 - Chlamydia
C4R	Rectal infection
C4O	Pharayneal infection-
C4X	Diagnosed previously elsewhere-
C4M	Medication given-
C4RX	Rectal infection, Diagnosed previously elsewhere-
C4RM	Rectal infection, Medication given-
C4OX	Rectal infection, Diagnosed previously elsewhere-
C4OM	Rectal infection, Medication given-
	C2 - LGV
C2R	Rectal infection-
C2O	Pharayneal infection-
C4R	Chlamydia - rectal infection
C4O	Chlamydia - pharyngeal infection
C4X	Chlamydia - previously diagnosed elsewhere
C4M	Chlamydia - medication given
C4RX	Chlamydia - rectal infection, previously diagnosed elsewhere
C4RM	Chlamydia - rectal infection, medication given
C4OX	Chlamydia - rectal infection, previously diagnosed elsewhere
C4OM	Chlamydia - pharyngeal infection, medication given
	C2 - Lymphogranuloma (LGV)
C2R	LGV - Rectal infection
C2O	LGV - Pharyngeal infection
	C4N - NSGI
C4NR	Proctitis
C4NR	NSGI - rectal infection (proctitis)
	C6A - Trichomoniasis
C6AX	Trichomoniasis - diagnosed elsewhere
	H1 - HIV
H1X	Diagnosed previously elsewhere-
	H1A - HIV
H1AX	Diagnosed previously elsewhere-
	H1B - HIV
H1BX	Diagnosed previously elsewhere-
	C10A - HSV
C10AM	Medication given
	C10B - HSV
C10BM	Medication given-
	C11A - Warts
C11AM	Medication given-
	C11D - Warts
C11DM	Medication given-
	W1 - HPV Vaccine
W1Q	Quadrivalent Vaccine
	W2 - HPV Vaccine
W2Q	Quadrivalent Vaccine-
	W3 - HPV Vaccine
W3Q	Quadrivalent Vaccine-
C6AX	Trichomoniasis - previously diagnosed elsewhere
	H1 - New HIV diagnosis
H1X	New HIV diagnosis - previously diagnosed elsewhere
	H1A - New HIV diagnosis: acute
H1AX	New HIV diagnosis: acute - previously diagnosed elsewhere

	H1B - HIV diagnosis: late (AIDS defined)
H1BX	New HIV diagnosis: late (AIDS defined) - previously diagnosed elsewhere
	C10A - Anogenital Herpes simplex: first episode
C10AM	Anogenital Herpes simplex: first episode - medication given
	C10B - Anogenital Herpes simplex: recurrent episode
C10BM	Anogenital Herpes simplex: recurrent episode - medication given
	C11A - Anogenital warts infection: first episode
C11AM	Anogenital warts infection: first episode - medication given
	C11D - Anogenital warts infection: recurrent episode
C11DM	Anogenital warts infection: recurrent episode - medication given
	W1 - HPV Vaccination: 1st dose
W1Q	HPV Vaccination: 1st dose - quadrivalent vaccine
	W2 - HPV Vaccination: 2nd dose
W2Q	HPV Vaccination: 2nd dose - quadrivalent vaccine
	W3 - HPV Vaccination: 3rd dose
W3Q	HPV Vaccination: 3rd dose - quadrivalent vaccine

SEXUAL INTERCOURSE UNDER THE INFLUENCE OF SUBSTANCE INDICATOR

Change to Attribute: New Attribute

An indication of whether the PERSON had sexual intercourse whilst under the influence of a SUBSTANCE.

National Codes:

- Y Yes - the PERSON had sexual intercourse whilst under the influence of a SUBSTANCE
- N No - the PERSON did not have sexual intercourse whilst under the influence of a SUBSTANCE
- U Unknown (PERSON asked but does not know)
- Z Not Stated (PERSON asked but declined to provide a response)

This attribute is also known by these names:

Context	Alias
plural	SEXUAL INTERCOURSE UNDER THE INFLUENCE OF SUBSTANCE INDICATORS

SEXUAL INTERCOURSE UNDER THE INFLUENCE OF SUBSTANCE INDICATOR

Change to Attribute: New Attribute

SEXUAL INTERCOURSE UNDER THE INFLUENCE OF SUBSTANCE INDICATOR

Data Elements:

SEXUAL INTERCOURSE UNDER THE INFLUENCE OF SUBSTANCE INDICATOR

SEXUALLY TRANSMITTED INFECTION PATIENT DIAGNOSIS SYMPTOMATIC INDICATOR

Change to Attribute: New Attribute

An indication of whether the PATIENT DIAGNOSIS for a Sexually Transmitted Infection is symptomatic.

National Codes:

- Y Yes - PATIENT DIAGNOSIS is symptomatic
- N No - PATIENT DIAGNOSIS is not symptomatic (Is Asymptomatic)

This attribute is also known by these names:

Context	Alias
plural	SEXUALLY TRANSMITTED INFECTION PATIENT DIAGNOSIS SYMPTOMATIC INDICATORS

SEXUALLY TRANSMITTED INFECTION PATIENT DIAGNOSIS SYMPTOMATIC INDICATOR

Change to Attribute: New Attribute

SEXUALLY TRANSMITTED INFECTION PATIENT DIAGNOSIS SYMPTOMATIC INDICATOR

Data Elements:

SEXUALLY TRANSMITTED INFECTION PATIENT DIAGNOSIS SYMPTOMATIC INDICATOR

SEXUAL ORIENTATION CODE

Change to Attribute: Changed Dataset, Description

The [SEXUAL ORIENTATION](#) of a [PATIENT](#).

National Codes:

- 1 Heterosexual
- 2 Gay/Lesbian
- 3 Bi-sexual
- 4 [PERSON](#) asked and does not know or is not sure *
- Z Not Stated ([PERSON](#) asked but declined to provide a response) *

Note: * Code not to be used for the [Genitourinary Medicine Clinic Activity Data Set](#).

[SEXUAL ORIENTATION CODE](#) will be replaced with [PERSON STATED SEXUAL ORIENTATION CODE](#), which is the most recent approved national information standard to describe the required definition.

SUBSTANCE INJECTED IN THE LAST THREE MONTHS INDICATOR

Change to Attribute: New Attribute

An indication of whether the [PERSON](#) injected a [SUBSTANCE](#) in the last three months.

National Codes:

- Y Yes - the [PERSON](#) injected a [SUBSTANCE](#) in the last three months
- N No - the [PERSON](#) did not inject a [SUBSTANCE](#) in the last three months
- U Unknown ([PERSON](#) asked but does not know)
- Z Not Stated ([PERSON](#) asked but declined to provide a response)

This attribute is also known by these names:

Context	Alias
plural	SUBSTANCE INJECTED IN THE LAST THREE MONTHS INDICATORS

SUBSTANCE INJECTED IN THE LAST THREE MONTHS INDICATOR

Change to Attribute: New Attribute

SUBSTANCE INJECTED IN THE LAST THREE MONTHS INDICATOR

Data Elements:

SUBSTANCE INJECTED IN THE LAST THREE MONTHS INDICATOR

SUBSTANCE INJECTED SHARED EQUIPMENT IN THE LAST THREE MONTHS INDICATOR

Change to Attribute: New Attribute

An indication of whether the [PERSON](#) has shared [SUBSTANCE](#) injected equipment in the last three months.

National Codes:

- Y Yes - the [PERSON](#) has shared injected equipment in the last three months
- N No - the [PERSON](#) has not shared injected equipment in the last three months
- U Unknown ([PERSON](#) asked but does not know)
- Z Not Stated ([PERSON](#) asked but declined to provide a response)

This attribute is also known by these names:

Context	Alias
plural	SUBSTANCE INJECTED SHARED EQUIPMENT IN THE LAST THREE MONTHS INDICATORS

SUBSTANCE INJECTED SHARED EQUIPMENT IN THE LAST THREE MONTHS INDICATOR

Change to Attribute: New Attribute

SUBSTANCE INJECTED SHARED EQUIPMENT IN THE LAST THREE MONTHS INDICATOR

Data Elements:

SUBSTANCE INJECTED SHARED EQUIPMENT IN THE LAST THREE MONTHS INDICATOR
--

SUBSTANCE USE IN THE LAST THREE MONTHS INDICATOR

Change to Attribute: New Attribute

An indication of whether a PERSON has used a SUBSTANCE in the last three months.

National Codes:

- Y Yes - the PERSON has used a SUBSTANCE in the last three months
- N No - the PERSON has not used a SUBSTANCE in the last three months
- U Unknown (PERSON asked but does not know)
- Z Not Stated (PERSON asked but declined to provide a response)

This attribute is also known by these names:

Context	Alias
plural	SUBSTANCE USE IN THE LAST THREE MONTHS INDICATORS

SUBSTANCE USE IN THE LAST THREE MONTHS INDICATOR

Change to Attribute: New Attribute

SUBSTANCE USE IN THE LAST THREE MONTHS INDICATOR

Data Elements:

SUBSTANCE USE IN THE LAST THREE MONTHS INDICATOR (AMPHETAMINE OR SPEED)
SUBSTANCE USE IN THE LAST THREE MONTHS INDICATOR (BENZODIAZEPINES NON PRESCRIBED)
SUBSTANCE USE IN THE LAST THREE MONTHS INDICATOR (CANNABIS)
SUBSTANCE USE IN THE LAST THREE MONTHS INDICATOR (COCAINE)
SUBSTANCE USE IN THE LAST THREE MONTHS INDICATOR (CRACK)
SUBSTANCE USE IN THE LAST THREE MONTHS INDICATOR (CRYSTAL METH OR METHAMPHETAMINE)
SUBSTANCE USE IN THE LAST THREE MONTHS INDICATOR (ECSTASY OR METHYLENEDIOXYMETHAMPHETAMINE)
SUBSTANCE USE IN THE LAST THREE MONTHS INDICATOR (GAMMAHYDROXYBUTYRATE OR GAMMABUTYROLACTONE)
SUBSTANCE USE IN THE LAST THREE MONTHS INDICATOR (HEROIN)
SUBSTANCE USE IN THE LAST THREE MONTHS INDICATOR (KETAMINE)
SUBSTANCE USE IN THE LAST THREE MONTHS INDICATOR (MEPHEDRONE)
SUBSTANCE USE IN THE LAST THREE MONTHS INDICATOR (METHADONE)
SUBSTANCE USE IN THE LAST THREE MONTHS INDICATOR (NOVEL PSYCHOACTIVE)
SUBSTANCE USE IN THE LAST THREE MONTHS INDICATOR (POPPERS)
SUBSTANCE USE IN THE LAST THREE MONTHS INDICATOR (RECREATIONAL DRUGS)
SUBSTANCE USE IN THE LAST THREE MONTHS INDICATOR (SOLVENTS OR GLUE)
SUBSTANCE USE IN THE LAST THREE MONTHS INDICATOR (UNCLASSIFIED SUBSTANCE)

AGE AT ATTENDANCE DATE

Change to Data Element: Changed Dataset

Format/Length:	n3
National Codes:	
Default Codes:	999 - Not known i.e. date of birth not known and age cannot be estimated. Note that this code is NOT valid for the NHS Health Checks Data Set

Notes:

[AGE AT ATTENDANCE DATE](#) is derived as the number of completed years between the [PERSON BIRTH DATE](#) of the [PATIENT](#) and the [ATTENDANCE DATE](#) or the estimated age of the [PATIENT](#).

Note that default code 999 is NOT valid for the [NHS Health Checks Data Set](#).

ALCOHOL USE ASSESSED AS PROBLEMATIC INDICATOR (SEXUAL HEALTH SERVICE)

Change to Data Element: New Data Element

Format/Length:	max an2
National Codes:	See ALCOHOL USE ASSESSED AS PROBLEMATIC INDICATOR FOR SEXUAL HEALTH SERVICE
Default Codes:	NA - Not Applicable (PERSON not asked)

Notes:

[ALCOHOL USE ASSESSED AS PROBLEMATIC INDICATOR \(SEXUAL HEALTH SERVICE\)](#) is the same as attribute [ALCOHOL USE ASSESSED AS PROBLEMATIC INDICATOR FOR SEXUAL HEALTH SERVICE](#).

This data element is also known by these names:

Context	Alias
plural	ALCOHOL USE ASSESSED AS PROBLEMATIC INDICATORS (SEXUAL HEALTH SERVICE)

ALCOHOL USE ASSESSED AS PROBLEMATIC INDICATOR (SEXUAL HEALTH SERVICE)

Change to Data Element: New Data Element

[ALCOHOL USE ASSESSED AS PROBLEMATIC INDICATOR \(SEXUAL HEALTH SERVICE\)](#)

Attribute:

ALCOHOL USE ASSESSED AS PROBLEMATIC INDICATOR FOR SEXUAL HEALTH SERVICE

ALCOHOL USE ASSESSED INDICATOR (SEXUAL HEALTH SERVICE)

Change to Data Element: New Data Element

Format/Length:	max an2
National Codes:	See ALCOHOL USE ASSESSED INDICATOR FOR SEXUAL HEALTH SERVICE
Default Codes:	NA - Not Applicable (PERSON not asked)

Notes:

[ALCOHOL USE ASSESSED INDICATOR \(SEXUAL HEALTH SERVICE\)](#) is the same as attribute [ALCOHOL USE ASSESSED INDICATOR FOR SEXUAL HEALTH SERVICE](#).

This data element is also known by these names:

Context	Alias
plural	ALCOHOL USE ASSESSED INDICATORS (SEXUAL HEALTH SERVICE)

ALCOHOL USE ASSESSED INDICATOR (SEXUAL HEALTH SERVICE)

Change to Data Element: New Data Element

[ALCOHOL USE ASSESSED INDICATOR \(SEXUAL HEALTH SERVICE\)](#)

Attribute:

ALCOHOL USE ASSESSED INDICATOR FOR SEXUAL HEALTH SERVICE
--

ATTENDANCE DATE

Change to Data Element: Changed Dataset

Format/Length:	See DATE
National Codes:	
Default Codes:	

Notes:

[ATTENDANCE DATE](#) is the same as attribute [ACTIVITY DATE](#) where the [ACTIVITY DATE TYPE](#) is National Code '[Attendance Date](#)'.

CLINIC TYPE (SEXUAL HEALTH SERVICE)

Change to Data Element: New Data Element

Format/Length:	an2
National Codes:	See CLINIC TYPE FOR SEXUAL HEALTH SERVICE
Default Codes:	

Notes:

[CLINIC TYPE \(SEXUAL HEALTH SERVICE\)](#) is the same as attribute [CLINIC TYPE FOR SEXUAL HEALTH SERVICE](#).

This data element is also known by these names:

Context	Alias
plural	CLINIC TYPES (SEXUAL HEALTH SERVICE)

CLINIC TYPE (SEXUAL HEALTH SERVICE)

Change to Data Element: New Data Element

CLINIC TYPE (SEXUAL HEALTH SERVICE)

Attribute:

CLINIC TYPE FOR SEXUAL HEALTH SERVICE

CONDOMLESS SEX INDICATOR (PENETRATIVE SEX MALE SAME SEX PARTNERS IN THE LAST THREE MONTHS)

Change to Data Element: New Data Element

Format/Length:	max an2
National Codes:	See CONDOMLESS SEX INDICATOR
Default Codes:	NA - Not Applicable (PERSON not asked)

Notes:

[CONDOMLESS SEX INDICATOR \(PENETRATIVE SEX MALE SAME SEX PARTNERS IN THE LAST THREE MONTHS\)](#) is the same as attribute [CONDOMLESS SEX INDICATOR](#), for penetrative sex with male same sex partners in the last three months.

This data element is also known by these names:

Context	Alias
plural	CONDOMLESS SEX INDICATORS (PENETRATIVE SEX MALE SAME SEX PARTNERS IN THE LAST THREE MONTHS)

CONDOMLESS SEX INDICATOR (PENETRATIVE SEX MALE SAME SEX PARTNERS IN THE LAST THREE MONTHS)

Change to Data Element: New Data Element

CONDOMLESS SEX INDICATOR (PENETRATIVE SEX MALE SAME SEX PARTNERS IN THE LAST THREE MONTHS)

Attribute:

CONDOMLESS SEX INDICATOR
--

CONDOMLESS SEX INDICATOR (PENETRATIVE SEX OPPOSITE SEX PARTNERS FOR THE LAST TIME PERSON HAD SEX)

Change to Data Element: New Data Element

Format/Length:	max an2
National Codes:	See CONDOMLESS SEX INDICATOR
Default Codes:	NA - Not Applicable (PERSON not asked)

Notes:

[CONDOMLESS SEX INDICATOR \(PENETRATIVE SEX OPPOSITE SEX PARTNERS FOR THE LAST TIME PERSON HAD SEX\)](#) is the same as attribute [CONDOMLESS SEX INDICATOR](#).

CONDOMLESS SEX INDICATOR (PENETRATIVE SEX OPPOSITE SEX PARTNERS FOR THE LAST TIME PERSON HAD SEX)) is an indication of whether the PERSON had condomless sex the last time they had penetrative sex with an opposite sex partner.

This data element is also known by these names:

Context	Alias
plural	CONDOMLESS SEX INDICATORS (PENETRATIVE SEX OPPOSITE SEX PARTNERS THE LAST TIME THE PERSON HAD SEX)

CONDOMLESS SEX INDICATOR (PENETRATIVE SEX OPPOSITE SEX PARTNERS FOR THE LAST TIME PERSON HAD SEX))

Change to Data Element: New Data Element

CONDOMLESS SEX INDICATOR (PENETRATIVE SEX OPPOSITE SEX PARTNERS FOR THE LAST TIME PERSON HAD SEX))

Attribute:

CONDOMLESS SEX INDICATOR

CONDOMLESS SEX INDICATOR (RECEPTIVE SEX MALE SAME SEX PARTNERS IN THE LAST THREE MONTHS)

Change to Data Element: New Data Element

Format/Length:	max an2
National Codes:	See CONDOMLESS SEX INDICATOR
Default Codes:	NA - Not Applicable (PERSON not asked)

Notes:

CONDOMLESS SEX INDICATOR (RECEPTIVE SEX MALE SAME SEX PARTNERS IN THE LAST THREE MONTHS) is the same as attribute CONDOMLESS SEX INDICATOR, for receptive sex with male same sex partners in the last three months.

This data element is also known by these names:

Context	Alias
plural	CONDOMLESS SEX INDICATORS (RECEPTIVE SEX MALE SAME SEX PARTNERS IN THE LAST THREE MONTHS)

CONDOMLESS SEX INDICATOR (RECEPTIVE SEX MALE SAME SEX PARTNERS IN THE LAST THREE MONTHS)

Change to Data Element: New Data Element

CONDOMLESS SEX INDICATOR (RECEPTIVE SEX MALE SAME SEX PARTNERS IN THE LAST THREE MONTHS)

Attribute:

CONDOMLESS SEX INDICATOR

CONSULTATION MEDIUM USED (SEXUAL HEALTH SERVICE)

Change to Data Element: New Data Element

Format/Length:	an2
National Codes:	
Default Codes:	

Notes:

CONSULTATION MEDIUM USED (SEXUAL HEALTH SERVICE) is the same as attribute CONSULTATION MEDIUM USED for a Sexual Health Service.

Permitted National Codes:

- 01 Face to face communication
- 02 Telephone
- 07 On-line Triage

This data element is also known by these names:

Context	Alias
---------	-------

plural | CONSULTATION MEDIA USED (SEXUAL HEALTH SERVICE)

CONSULTATION MEDIUM USED (SEXUAL HEALTH SERVICE)

Change to Data Element: New Data Element

CONSULTATION MEDIUM USED (SEXUAL HEALTH SERVICE)

Attribute:

CONSULTATION MEDIUM USED

CONSULTATION TYPE

Change to Data Element: Changed Dataset

Format/Length: an2
National Codes: See [CONSULTATION TYPE](#)
Default Codes:

Notes:

[CONSULTATION TYPE](#) is the same as attribute [CONSULTATION TYPE](#).

COUNTRY CODE (BIRTH)

Change to Data Element: Changed Dataset, Description

Format/Length: a3
National Codes:
Default Codes: XXX – Unknown*
ZZZ – Not stated ([PERSON](#) asked but declined to provide a response)*
Default Codes: XXX - Unknown*
ZZZ - Not stated ([PERSON](#) asked but declined to provide a response)**

Notes:

[COUNTRY CODE \(BIRTH\)](#) is the same as attribute [COUNTRY CODE](#).

[COUNTRY CODE \(BIRTH\)](#) is the country where the [PERSON](#) was born.

Refer to the ISO 3166-1 standard for actual list of alphabetic codes and countries. The alphabetic code to be used is the 3-char alphabetic code available on the International Organisation for Standardisation website <http://www.iso.org/iso/home.htm>. The 2-char alphabetic code **must not be used**.

* Note – Default Codes XXX and ZZZ are only valid for use in the [Female Genital Mutilation Data Set](#). Notes:

•

* Default Code XXX is only valid for use in the [Female Genital Mutilation Data Set](#)

•

** Default Code ZZZ is only valid for the use in [GUMCAD Sexually Transmitted Infection Surveillance System Data Set](#) and [Female Genital Mutilation Data Set](#).

DIAGNOSTIC OR PROCEDURE CODING (SEXUAL HEALTH AND HUMAN IMMUNODEFICIENCY VIRUS RELEVANT READ CODES)

Change to Data Element: Changed Dataset, Description

Format/Length: See [READ CODE](#)
National Codes:
Default Codes:

Notes:

[DIAGNOSTIC OR PROCEDURE CODING \(SEXUAL HEALTH AND HUMAN IMMUNODEFICIENCY VIRUS RELEVANT READ CODES\)](#) is the same as attribute [CLINICAL TERMINOLOGY CODE](#).

[DIAGNOSTIC OR PROCEDURE CODING \(SEXUAL HEALTH AND HUMAN IMMUNODEFICIENCY VIRUS RELEVANT READ CODES\)](#) is the [Read Coded Clinical Terms](#) code relevant to conditions associated with Sexual Health and Human Immunodeficiency Virus.

The list of available sexual health [Read Coded Clinical Terms](#) are available at gumcad@hpa.org.uk.

ETHNIC CATEGORY

Change to Data Element: Changed Dataset, Description

Format/Length:	an2
NWDS ID:	PETH
NWDS Field Name:	Ethnic Category
ESR Field Name:	Ethnic Origin
National Codes:	See ETHNIC CATEGORY CODE
Default Codes:	99 - Not known*

Notes:

[ETHNIC CATEGORY](#) is the same as attribute [ETHNIC CATEGORY CODE](#).

The 16+1 ethnic data categories defined in the 2001 census is the national mandatory standard for the collection and analysis of ethnicity.

The national code must be transmitted as the first character in the 2 character field. The second character is optional for use locally. It must, however, be able to be grouped consistently with the 16 main categories.

National code Z should be used where the [PERSON](#) has been given the opportunity to state their [ETHNIC CATEGORY](#) but chose not to. Default code 99 should be used where the [PERSON](#)'s [ETHNIC CATEGORY](#) is not known.

*For the [Stop Smoking Services Quarterly Data Set](#) default code 99 'Not Known' is **NOT** valid.

FIRST ATTENDANCE CODE

Change to Data Element: Changed Dataset, Description

Format/Length:	an1
National Codes:	See FIRST ATTENDANCE
Default Codes:	

Notes:

[FIRST ATTENDANCE CODE](#) is the same as attribute [FIRST ATTENDANCE](#).

[FIRST ATTENDANCE CODE](#) is used by the [Secondary Uses Service](#) to derive the [Healthcare Resource Group 4](#). Failure to correctly populate this data element is likely to result in an incorrect [Healthcare Resource Group](#), usually associated with lower levels of healthcare resource.

For further information, please refer to the [NHS Digital](#) website at: [Payment by Results Guidance](#).

GENDER IDENTITY CODE (SEXUAL HEALTH)

Change to Data Element: Changed Dataset

Format/Length:	an1
National Codes:	See GENDER IDENTITY CODE FOR SEXUAL HEALTH
Default Codes:	X - Not Known (not recorded)

Notes:

[GENDER IDENTITY CODE \(SEXUAL HEALTH\)](#) is the same as attribute [GENDER IDENTITY CODE FOR SEXUAL HEALTH](#).

GENDER IDENTITY SAME AT BIRTH INDICATOR

Change to Data Element: Changed Dataset

Format/Length:	an1
National Codes:	See GENDER IDENTITY SAME AT BIRTH INDICATOR
Default Codes:	X - Not known (not asked)

Notes:

[GENDER IDENTITY SAME AT BIRTH INDICATOR](#) is the same as attribute [GENDER IDENTITY SAME AT BIRTH INDICATOR](#).

HIV POSITIVE PARTNERS IN LAST THREE MONTHS INDICATOR (PENETRATIVE SEX MALE SAME SEX PARTNERS)

Change to Data Element: New Data Element

Format/Length:	max an2
----------------	---------

National Codes: See [HIV POSITIVE PARTNERS IN THE LAST THREE MONTHS INDICATOR FOR PENETRATIVE SEX MALE SAME SEX PARTNERS](#)
 NA - Not Applicable ([PERSON](#) not asked)

Notes:

[HIV POSITIVE PARTNERS IN LAST THREE MONTHS INDICATOR \(PENETRATIVE SEX MALE SAME SEX PARTNERS\)](#) is the same as attribute [HIV POSITIVE PARTNERS IN THE LAST THREE MONTHS INDICATOR FOR PENETRATIVE SEX MALE SAME SEX PARTNERS](#).

This data element is also known by these names:

Context	Alias
plural	HIV POSITIVE PARTNERS IN LAST THREE MONTHS INDICATORS (PENETRATIVE SEX MALE SAME SEX PARTNERS)

[HIV POSITIVE PARTNERS IN LAST THREE MONTHS INDICATOR \(PENETRATIVE SEX MALE SAME SEX PARTNERS\)](#)

Change to Data Element: New Data Element

[HIV POSITIVE PARTNERS IN LAST THREE MONTHS INDICATOR \(PENETRATIVE SEX MALE SAME SEX PARTNERS\)](#)

Attribute:

[HIV POSITIVE PARTNERS IN THE LAST THREE MONTHS INDICATOR FOR PENETRATIVE SEX MALE SAME SEX PARTNERS](#)

[INITIAL PARTNER NOTIFICATION DISCUSSION DATE](#)

Change to Data Element: New Data Element

Format/Length: See [DATE](#)
 National Codes:
 Default Codes:

Notes:

[INITIAL PARTNER NOTIFICATION DISCUSSION DATE](#) is the same as attribute [ACTIVITY DATE](#) where the [ACTIVITY DATE TYPE](#) is National Code '[Care Contact Date](#)'.

[INITIAL PARTNER NOTIFICATION DISCUSSION DATE](#) is the [DATE](#) of the [Initial Partner Notification Discussion](#) at a [Sexual Health Service](#).

This data element is also known by these names:

Context	Alias
plural	INITIAL PARTNER NOTIFICATION DISCUSSION DATES

[INITIAL PARTNER NOTIFICATION DISCUSSION DATE](#)

Change to Data Element: New Data Element

[INITIAL PARTNER NOTIFICATION DISCUSSION DATE](#)

Attribute:

[ACTIVITY DATE](#)

[LOCAL PATIENT IDENTIFIER \(EXTENDED\)](#)

Change to Data Element: Changed Dataset, Description

Format/Length: max an20
 National Codes:
 Default Codes:

Notes:

[LOCAL PATIENT IDENTIFIER \(EXTENDED\)](#) is the same as attribute [LOCAL PATIENT IDENTIFIER](#).

[LOCAL PATIENT IDENTIFIER \(EXTENDED\)](#) is used where IT systems have a [LOCAL PATIENT IDENTIFIER](#) which is longer than 10 characters and [LOCAL PATIENT IDENTIFIER](#) cannot be used for data submission.

For the [Cancer Outcomes and Services Data Set](#), [LOCAL PATIENT IDENTIFIER \(EXTENDED\)](#) can be recorded as well as or instead of [NHS NUMBER](#) as part of a [Cancer Care Spell](#).

LOWER LAYER SUPER OUTPUT AREA (PERSON RESIDENCE)

Change to Data Element: Changed Dataset, Description

Format/Length:	max an9
National Codes:	
Default Codes:	X99999998 - Not Applicable (outside the United Kingdom) X99999999 - Not Known

Notes:

[LOWER LAYER SUPER OUTPUT AREA \(PERSON RESIDENCE\)](#) is the same as attribute [GEOGRAPHIC AREA CODE](#) for a [Lower Layer Super Output Area](#).

[LOWER LAYER SUPER OUTPUT AREA \(PERSON RESIDENCE\)](#) is the [Lower Layer Super Output Area](#) for where the [PERSON](#) is resident.

For guidance on the [Lower Layer Super Output Area](#) codes, see the [NHS Postcode Directory](#) which can be downloaded from the [Organisation Data Service](#) pages of the [NHS Digital](#) website at: [NHS Postcode Directory User Guide](#).

[LOWER LAYER SUPER OUTPUT AREA \(RESIDENCE\)](#) will be replaced with [LOWER LAYER SUPER OUTPUT AREA \(PERSON RESIDENCE\)](#), when it has been approved for use in national information standards.

LOWER LAYER SUPER OUTPUT AREA (RESIDENCE)

Change to Data Element: Changed Dataset

Format/Length:	annnnnnnn
National Codes:	
Default Codes:	Z99999999 - Scotland, Northern Ireland, Channel Islands, Isle of Man X99999998 - Not Applicable (outside the United Kingdom) X99999999 - Not Known

Notes:

[LOWER LAYER SUPER OUTPUT AREA \(RESIDENCE\)](#) is the [Lower Layer Super Output Area](#) for where the [PATIENT](#) is resident

[LOWER LAYER SUPER OUTPUT AREA \(RESIDENCE\)](#) will be replaced with [LOWER LAYER SUPER OUTPUT AREA \(PERSON RESIDENCE\)](#), when it has been approved for use in national information standards.

NEW SEX PARTNERS IN LAST THREE MONTHS INDICATOR (FEMALE SAME SEX PARTNERS)

Change to Data Element: New Data Element

Format/Length:	max an2
National Codes:	See NEW SEX PARTNERS IN THE LAST THREE MONTHS INDICATOR
Default Codes:	NA - Not Applicable (PERSON not asked)

Notes:

[NEW SEX PARTNERS IN LAST THREE MONTHS INDICATOR \(FEMALE SAME SEX PARTNERS\)](#) is the same as attribute [NEW SEX PARTNERS IN THE LAST THREE MONTHS INDICATOR](#), for female same sex partners.

This data element is also known by these names:

Context	Alias
plural	NEW SEX PARTNERS IN LAST THREE MONTHS INDICATORS (FEMALE SAME SEX PARTNERS)

NEW SEX PARTNERS IN LAST THREE MONTHS INDICATOR (FEMALE SAME SEX PARTNERS)

Change to Data Element: New Data Element

[NEW SEX PARTNERS IN LAST THREE MONTHS INDICATOR \(FEMALE SAME SEX PARTNERS\)](#)

Attribute:

NEW SEX PARTNERS IN THE LAST THREE MONTHS INDICATOR

NEW SEX PARTNERS IN LAST THREE MONTHS INDICATOR (OPPOSITE SEX PARTNERS)

Change to Data Element: New Data Element

Format/Length:	max an2
National Codes:	See NEW SEX PARTNERS IN THE LAST THREE MONTHS INDICATOR
Default Codes:	NA - Not Applicable (PERSON not asked)

Notes:

[NEW SEX PARTNERS IN LAST THREE MONTHS INDICATOR \(OPPOSITE SEX PARTNERS\)](#) is the same as attribute [NEW SEX PARTNERS IN THE LAST THREE MONTHS INDICATOR](#), for opposite sex partners.

This data element is also known by these names:

Context	Alias
plural	NEW SEX PARTNERS IN LAST THREE MONTHS INDICATORS (OPPOSITE SEX PARTNERS)

NEW SEX PARTNERS IN LAST THREE MONTHS INDICATOR (OPPOSITE SEX PARTNERS)

Change to Data Element: New Data Element

NEW SEX PARTNERS IN LAST THREE MONTHS INDICATOR (OPPOSITE SEX PARTNERS)**Attribute:**

NEW SEX PARTNERS IN THE LAST THREE MONTHS INDICATOR

NUMBER OF CONTACTABLE PATIENT REPORTED PARTNERS FOR DIAGNOSED SEXUALLY TRANSMITTED INFECTION

Change to Data Element: New Data Element

Format/Length:	max an3
National Codes:	
Default Codes:	NA - Not Applicable (PATIENT not asked)

Notes:

[NUMBER OF CONTACTABLE PATIENT REPORTED PARTNERS FOR DIAGNOSED SEXUALLY TRANSMITTED INFECTION](#) is the number of contactable partners reported by the [PATIENT](#) diagnosed with a Sexually Transmitted Infection attending a [Sexual Health Service](#).

This data element is also known by these names:

Context	Alias
plural	NUMBERS OF CONTACTABLE PATIENT REPORTED PARTNERS REPORTED FOR SEXUALLY TRANSMITTED INFECTION DIAGNOSED

NUMBER OF PATIENT PARTNERS CONFIRMED AS ATTENDED A SEXUAL HEALTH SERVICE

Change to Data Element: New Data Element

Format/Length:	max an3
National Codes:	
Default Codes:	NA - Not Applicable

Notes:

[NUMBER OF PATIENT PARTNERS CONFIRMED AS ATTENDED A SEXUAL HEALTH SERVICE](#) is the number of [PATIENT](#) partners confirmed by the [CARE PROFESSIONAL](#) as having attended a [Sexual Health Service](#) within four weeks of the [Initial Partner Notification Discussion](#).

This data element is also known by these names:

Context	Alias
plural	NUMBERS OF PATIENT PARTNERS CONFIRMED AS ATTENDED A SEXUAL HEALTH SERVICE

NUMBER OF PATIENT PARTNERS REPORTED AS ATTENDED A SEXUAL HEALTH SERVICE

Change to Data Element: New Data Element

Format/Length:	max an3
----------------	---------

National Codes:

Default Codes: NA - Not Applicable (PATIENT not asked)

Notes:

NUMBER OF PATIENT PARTNERS REPORTED AS ATTENDED A SEXUAL HEALTH SERVICE is the number of PATIENT partners reported by the PATIENT as having attended a Sexual Health Service within four weeks of an Initial Partner Notification Discussion.

This data element is also known by these names:

Context	Alias
plural	NUMBERS OF PATIENT PARTNERS REPORTED AS ATTENDED A SEXUAL HEALTH SERVICE

NUMBER OF PATIENT REPORTED PARTNERS FOR DIAGNOSED SEXUALLY TRANSMITTED INFECTION

Change to Data Element: New Data Element

Format/Length: max an3

National Codes:

Default Codes: NA - Not Applicable (PATIENT not asked)

Notes:

NUMBER OF PATIENT REPORTED PARTNERS FOR DIAGNOSED SEXUALLY TRANSMITTED INFECTION is the number of PATIENT partners reported by the PATIENT for the Sexually Transmitted Infection diagnosed at a Sexual Health Service.

This data element is also known by these names:

Context	Alias
plural	NUMBERS OF PATIENT REPORTED PARTNERS FOR DIAGNOSED SEXUALLY TRANSMITTED INFECTION

NUMBER OF SEX PARTNERS IN LAST THREE MONTHS CODE (FEMALE SAME SEX PARTNERS)

Change to Data Element: New Data Element

Format/Length: an2

National Codes: See NUMBER OF SEX PARTNERS IN LAST THREE MONTHS CODE

Default Codes: NA - Not Applicable (PERSON not asked)

Notes:

NUMBER OF SEX PARTNERS IN LAST THREE MONTHS CODE (FEMALE SAME SEX PARTNERS) is the same as attribute NUMBER OF SEX PARTNERS IN LAST THREE MONTHS CODE, for female same sex partners.

This data element is also known by these names:

Context	Alias
plural	NUMBER OF SEX PARTNERS IN LAST THREE MONTHS CODES (FEMALE SAME SEX PARTNERS)

NUMBER OF SEX PARTNERS IN LAST THREE MONTHS CODE (FEMALE SAME SEX PARTNERS)

Change to Data Element: New Data Element

NUMBER OF SEX PARTNERS IN LAST THREE MONTHS CODE (FEMALE SAME SEX PARTNERS)

Attribute:

NUMBER OF SEX PARTNERS IN LAST THREE MONTHS CODE

NUMBER OF SEX PARTNERS IN LAST THREE MONTHS CODE (MALE SAME SEX PARTNERS)

Change to Data Element: New Data Element

Format/Length: an2

National Codes: See NUMBER OF SEX PARTNERS IN LAST THREE MONTHS CODE

Default Codes: NA - Not Applicable (PERSON not asked)

Notes:

NUMBER OF SEX PARTNERS IN LAST THREE MONTHS CODE (MALE SAME SEX PARTNERS) is the same as attribute NUMBER OF SEX PARTNERS IN LAST THREE MONTHS CODE, for male same sex partners.

This data element is also known by these names:

Context	Alias
plural	NUMBER OF SEX PARTNERS IN LAST THREE MONTHS CODES (MALE SAME SEX PARTNERS)

NUMBER OF SEX PARTNERS IN LAST THREE MONTHS CODE (MALE SAME SEX PARTNERS)

Change to Data Element: New Data Element

NUMBER OF SEX PARTNERS IN LAST THREE MONTHS CODE (MALE SAME SEX PARTNERS)

Attribute:

NUMBER OF SEX PARTNERS IN LAST THREE MONTHS CODE
--

NUMBER OF SEX PARTNERS IN LAST THREE MONTHS CODE (OPPOSITE SEX PARTNERS)

Change to Data Element: New Data Element

Format/Length:	an2
National Codes:	See NUMBER OF SEX PARTNERS IN LAST THREE MONTHS CODE
Default Codes:	NA - Not Applicable (PERSON not asked)

Notes:

[NUMBER OF SEX PARTNERS IN LAST THREE MONTHS CODE \(OPPOSITE SEX PARTNERS\)](#) is the same as attribute [NUMBER OF SEX PARTNERS IN LAST THREE MONTHS CODE](#), for opposite sex partners.

This data element is also known by these names:

Context	Alias
plural	NUMBER OF SEX PARTNERS IN LAST THREE MONTHS CODES (OPPOSITE SEX PARTNERS)

NUMBER OF SEX PARTNERS IN LAST THREE MONTHS CODE (OPPOSITE SEX PARTNERS)

Change to Data Element: New Data Element

NUMBER OF SEX PARTNERS IN LAST THREE MONTHS CODE (OPPOSITE SEX PARTNERS)

Attribute:

NUMBER OF SEX PARTNERS IN LAST THREE MONTHS CODE
--

ONS LOCAL GOVERNMENT GEOGRAPHIC AREA CODE (LOCAL AUTHORITY DISTRICT)

Change to Data Element: Changed Dataset, Description

Format/Length:	max an9
National Codes:	
Default Codes:	X99999998 - Not Applicable (outside the United Kingdom) X99999999 - Not Known

Notes:

[ONS LOCAL GOVERNMENT GEOGRAPHIC AREA CODE \(LOCAL AUTHORITY DISTRICT\)](#) is the same as attribute [GEOGRAPHIC AREA CODE](#) for a [Local Authority District](#).

For guidance on [Local Authority District](#) codes, see the [NHS Postcode Directory](#) which can be downloaded from the [Organisation Data Service](#) pages of the [NHS Digital](#) website at: [NHS Postcode Directory User Guide](#).

~~[ONS LOCAL GOVERNMENT GEOGRAPHY CODE \(LOCAL AUTHORITY DISTRICT\)](#) will be replaced with [ONS LOCAL GOVERNMENT GEOGRAPHIC AREA CODE \(LOCAL AUTHORITY DISTRICT\)](#), when it has been approved for use in national information standards.~~

ONS LOCAL GOVERNMENT GEOGRAPHY CODE (LOCAL AUTHORITY DISTRICT) (RETIRED) renamed from ONS LOCAL GOVERNMENT GEOGRAPHY CODE (LOCAL AUTHORITY DISTRICT)

Change to Data Element: Changed Dataset, Description, Name, linked Attribute, status to Retired

Format/Length:	min an3 max an9
National Codes:	
Default Codes:	L00000000 — Channel Island M00000000 — Isle of Man

X99999998 – Not applicable (outside the United Kingdom)

X99999999 – Not Known

Notes:

[ONS LOCAL GOVERNMENT GEOGRAPHY CODE \(LOCAL AUTHORITY DISTRICT\)](#) is the same as attribute [GEOGRAPHIC AREA CODE](#) for a [Local Authority District](#).

~~[ONS LOCAL GOVERNMENT GEOGRAPHY CODE \(LOCAL AUTHORITY DISTRICT\)](#) will be replaced with [ONS LOCAL GOVERNMENT GEOGRAPHIC AREA CODE \(LOCAL AUTHORITY DISTRICT\)](#), when it has been approved for use in national information standards. This item has been retired from the NHS Data Model and Dictionary.~~

The last live version of this item is available in the ?????? release of the NHS Data Model and Dictionary.

Access to this version can be obtained by emailing information.standards@nhs.net with "NHS Data Model and Dictionary - Archive Request" in the email subject line.

ONS LOCAL GOVERNMENT GEOGRAPHY CODE (LOCAL AUTHORITY DISTRICT) (RETIRED) renamed from ONS LOCAL GOVERNMENT GEOGRAPHY CODE (LOCAL AUTHORITY DISTRICT)

Change to Data Element: Changed Dataset, Description, Name, linked Attribute, status to Retired

[ONS LOCAL GOVERNMENT GEOGRAPHY CODE \(LOCAL AUTHORITY DISTRICT\)](#)

Attribute:

[GEOGRAPHIC AREA CODE](#)

ONS LOCAL GOVERNMENT GEOGRAPHY CODE (LOCAL AUTHORITY DISTRICT) (RETIRED) renamed from ONS LOCAL GOVERNMENT GEOGRAPHY CODE (LOCAL AUTHORITY DISTRICT)

Change to Data Element: Changed Dataset, Description, Name, linked Attribute, status to Retired

- null
- Changed Description
- Changed Name from Data_Dictionary.Data_Field_Notes.O.Oc.ONS_LOCAL_GOVERNMENT_GEOGRAPHY_CODE_(LOCAL_AUTHORITY_DISTRICT) to Retired.Data_Dictionary.Data_Field_Notes.O.ONS_LOCAL_GOVERNMENT_GEOGRAPHY_CODE_(LOCAL_AUTHORITY_DISTRICT)
- null
- Retired ONS LOCAL GOVERNMENT GEOGRAPHY CODE (LOCAL AUTHORITY DISTRICT)

ORGANISATION SITE IDENTIFIER (OF TREATMENT)

Change to Data Element: Changed Dataset

Format/Length:	min an5 max an9
National Codes:	
ODS Default Codes:	R9998 - Not a hospital site
	89999 - Non-NHS UK Provider where no ORGANISATION IDENTIFIER has been issued
	89997 - Non-UK Provider where no ORGANISATION IDENTIFIER has been issued

Notes:

[ORGANISATION SITE IDENTIFIER \(OF TREATMENT\)](#) is the same as attribute [ORGANISATION IDENTIFIER](#).

[ORGANISATION SITE IDENTIFIER \(OF TREATMENT\)](#) is the [ORGANISATION IDENTIFIER](#) of the [Organisation Site](#) where the [PATIENT](#) was treated, i.e. it should enable the treating [Organisation](#) to be identified.

[ORGANISATION SITE IDENTIFIER \(OF TREATMENT\)](#) identifies the [Organisation Site](#) within the [Organisation](#) on which the [PATIENT](#) was treated, since facilities may vary on different hospital sites.

The code recorded should always be the national code; if the treatment is sub-commissioned to another NHS [Health Care Provider](#) or an independent UK provider, the [ORGANISATION SITE IDENTIFIER \(OF TREATMENT\)](#) used should be the [ORGANISATION IDENTIFIER](#) of the [Health Care Provider](#) actually carrying out the work.

Where treatment is sub-commissioned to an overseas provider the [Organisation Data Service Default Code](#) 89997 'Non-UK Provider where no [ORGANISATION IDENTIFIER](#) has been issued' is applicable.

Each [Organisation](#) has a unique [ORGANISATION IDENTIFIER](#). However, where an [Organisation](#) has more than one site from which it provides [SERVICES](#), then each site is uniquely identified. These sites are [Organisation Sites](#) and are uniquely identified by an [ORGANISATION IDENTIFIER](#).

For out-patients, [ACTIVITY](#) may take place outside the hospital, such as in the [PATIENT'S](#) home; in such cases, raising a site code is impractical. Therefore, code R9998 'Not a hospital site' would be used in these circumstances.

Note: [LOCATION CLASS](#) is used in the Commissioning Data Set (CDS) message to indicate the classification of the physical [LOCATION](#) within which the [ACTIVITY](#) occurred.

Use in the Future Outpatient CDS:

If the [INTENDED SITE CODE \(OF TREATMENT\)](#) is not known, this data element should be omitted.

[SITE CODE \(OF TREATMENT\)](#) will be replaced with [ORGANISATION SITE IDENTIFIER \(OF TREATMENT\)](#), when it has been approved for use in national information standards.

PARTNER NOTIFICATION CONSULTATION INDICATOR (SEXUAL HEALTH SERVICE)

Change to Data Element: New Data Element

Format/Length:	max an2
National Codes:	See PARTNER NOTIFICATION CONSULTATION INDICATOR FOR SEXUAL HEALTH SERVICE
Default Codes:	NA - Not Applicable

Notes:

[PARTNER NOTIFICATION CONSULTATION INDICATOR \(SEXUAL HEALTH SERVICE\)](#) is the same as attribute [PARTNER NOTIFICATION CONSULTATION INDICATOR FOR SEXUAL HEALTH SERVICE](#).

This data element is also known by these names:

Context	Alias
plural	PARTNER NOTIFICATION CONSULTATION INDICATORS (SEXUAL HEALTH SERVICE)

PARTNER NOTIFICATION CONSULTATION INDICATOR (SEXUAL HEALTH SERVICE)

Change to Data Element: New Data Element

PARTNER NOTIFICATION CONSULTATION INDICATOR (SEXUAL HEALTH SERVICE)

Attribute:

PARTNER NOTIFICATION CONSULTATION INDICATOR FOR SEXUAL HEALTH SERVICE

PATIENT DIAGNOSIS CONFIRMED INDICATION CODE (SEXUAL HEALTH SERVICE)

Change to Data Element: New Data Element

Format/Length:	an2
National Codes:	See PATIENT DIAGNOSIS CONFIRMED INDICATION CODE FOR SEXUAL HEALTH SERVICE
Default Codes:	NA - Not Applicable

Notes:

[PATIENT DIAGNOSIS CONFIRMED INDICATION CODE \(SEXUAL HEALTH SERVICE\)](#) is the same as attribute [PATIENT DIAGNOSIS CONFIRMED INDICATION CODE FOR SEXUAL HEALTH SERVICE](#).

This data element is also known by these names:

Context	Alias
plural	PATIENT DIAGNOSIS CONFIRMED INDICATION CODES (SEXUAL HEALTH SERVICE)

PATIENT DIAGNOSIS CONFIRMED INDICATION CODE (SEXUAL HEALTH SERVICE)

Change to Data Element: New Data Element

PATIENT DIAGNOSIS CONFIRMED INDICATION CODE (SEXUAL HEALTH SERVICE)

Attribute:

PATIENT DIAGNOSIS CONFIRMED INDICATION CODE FOR SEXUAL HEALTH SERVICE

PATIENT DIAGNOSIS SITE OF INFECTION (SEXUAL HEALTH SERVICE)

Change to Data Element: New Data Element

Format/Length:	an2
National Codes:	See PATIENT DIAGNOSIS SITE OF INFECTION FOR SEXUAL HEALTH SERVICE
Default Codes:	NA - Not Applicable

Notes:

[PATIENT DIAGNOSIS SITE OF INFECTION \(SEXUAL HEALTH SERVICE\)](#) is the same as attribute [PATIENT DIAGNOSIS SITE OF INFECTION FOR SEXUAL HEALTH SERVICE](#).

This data element is also known by these names:

Context	Alias
plural	PATIENT DIAGNOSIS SITES OF INFECTION (SEXUAL HEALTH SERVICE)

PATIENT DIAGNOSIS SITE OF INFECTION (SEXUAL HEALTH SERVICE)

Change to Data Element: New Data Element

PATIENT DIAGNOSIS SITE OF INFECTION (SEXUAL HEALTH SERVICE)

Attribute:

[PATIENT DIAGNOSIS SITE OF INFECTION FOR SEXUAL HEALTH SERVICE](#)

PATIENT DIAGNOSIS TREATMENT PROVIDED INDICATION CODE (SEXUAL HEALTH SERVICE)

Change to Data Element: New Data Element

Format/Length:	an2
National Codes:	See PATIENT DIAGNOSIS TREATMENT PROVIDED INDICATION CODE FOR SEXUAL HEALTH SERVICE
Default Codes:	NA - Not Applicable

Notes:

[PATIENT DIAGNOSIS TREATMENT PROVIDED INDICATION CODE \(SEXUAL HEALTH SERVICE\)](#) is the same as attribute [PATIENT DIAGNOSIS TREATMENT PROVIDED INDICATION CODE FOR SEXUAL HEALTH SERVICE](#).

This data element is also known by these names:

Context	Alias
plural	PATIENT DIAGNOSIS TREATMENT PROVIDED INDICATION CODES (SEXUAL HEALTH SERVICE)

PATIENT DIAGNOSIS TREATMENT PROVIDED INDICATION CODE (SEXUAL HEALTH SERVICE)

Change to Data Element: New Data Element

PATIENT DIAGNOSIS TREATMENT PROVIDED INDICATION CODE (SEXUAL HEALTH SERVICE)

Attribute:

[PATIENT DIAGNOSIS TREATMENT PROVIDED INDICATION CODE FOR SEXUAL HEALTH SERVICE](#)

PERSON RISK FACTOR (SEXUALLY TRANSMITTED INFECTION)

Change to Data Element: New Data Element

Format/Length:	max an2
National Codes:	See PERSON RISK FACTOR FOR SEXUALLY TRANSMITTED INFECTION
Default Codes:	NA - Not applicable (PERSON not asked)

Notes:

[PERSON RISK FACTOR \(SEXUALLY TRANSMITTED INFECTION\)](#) is the same as attribute [PERSON RISK FACTOR FOR SEXUALLY TRANSMITTED INFECTION](#).

This data element is also known by these names:

Context	Alias
plural	PERSON RISK FACTORS (SEXUALLY TRANSMITTED INFECTION)

PERSON RISK FACTOR (SEXUALLY TRANSMITTED INFECTION)

Change to Data Element: New Data Element

PERSON RISK FACTOR (SEXUALLY TRANSMITTED INFECTION)

Attribute:

PERSON RISK FACTOR FOR SEXUALLY TRANSMITTED INFECTION

PERSON STATED GENDER CODE

Change to Data Element: Changed Dataset

Format/Length: an1
National Codes: See [PERSON STATED GENDER CODE](#)
Default Codes: X - Not Known ([PERSON STATED GENDER CODE](#) not recorded)

Notes:

[PERSON STATED GENDER CODE](#) is the same as attribute [PERSON STATED GENDER CODE](#).

[PERSON GENDER CODE CURRENT](#) will be replaced with [PERSON STATED GENDER CODE](#) or [PERSON PHENOTYPIC SEX](#), which is the most recent approved national information standard to describe the required definition.

PERSON STATED SEXUAL ORIENTATION CODE

Change to Data Element: Changed Dataset, Description

Format/Length: an1
National Codes: See [PERSON STATED SEXUAL ORIENTATION CODE](#)
Default Codes: 9 - Not Known (Not Recorded)

Notes:

[PERSON STATED SEXUAL ORIENTATION CODE](#) is the same as attribute [PERSON STATED SEXUAL ORIENTATION CODE](#).

[SEXUAL ORIENTATION \(CURRENT\)](#) will be replaced with [PERSON STATED SEXUAL ORIENTATION CODE](#), which is the most recent approved national information standard to describe the required definition.

PRE EXPOSURE PROPHYLAXIS DRUG REGIMEN CODE

Change to Data Element: New Data Element

Format/Length: an2
National Codes: See [PRE EXPOSURE PROPHYLAXIS DRUG REGIMEN CODE](#)
Default Codes: NA - Not Applicable ([PATIENT](#) not asked)

Notes:

[PRE EXPOSURE PROPHYLAXIS DRUG REGIMEN CODE](#) is the same as attribute [PRE EXPOSURE PROPHYLAXIS DRUG REGIMEN CODE](#).

This data element is also known by these names:

Context	Alias
plural	PRE EXPOSURE PROPHYLAXIS DRUG REGIMEN CODES

PRE EXPOSURE PROPHYLAXIS DRUG REGIMEN CODE

Change to Data Element: New Data Element

PRE EXPOSURE PROPHYLAXIS DRUG REGIMEN CODE

Attribute:

PRE EXPOSURE PROPHYLAXIS DRUG REGIMEN CODE

PRE EXPOSURE PROPHYLAXIS ELIGIBILITY REASON

Change to Data Element: New Data Element

Format/Length: an2
National Codes: See [PRE EXPOSURE PROPHYLAXIS ELIGIBILITY REASON](#)
Default Codes: NA - Not Applicable ([PATIENT](#) not asked)

Notes:

PRE EXPOSURE PROPHYLAXIS ELIGIBILITY REASON is the same as attribute PRE EXPOSURE PROPHYLAXIS ELIGIBILITY REASON.

This data element is also known by these names:

Context	Alias
plural	PRE EXPOSURE PROPHYLAXIS ELIGIBILITY REASON CODES

PRE EXPOSURE PROPHYLAXIS ELIGIBILITY REASON

Change to Data Element: New Data Element

PRE EXPOSURE PROPHYLAXIS ELIGIBILITY REASON

Attribute:

PRE EXPOSURE PROPHYLAXIS ELIGIBILITY REASON

PRE EXPOSURE PROPHYLAXIS OFFER STATUS CODE

Change to Data Element: New Data Element

Format/Length:	an2
National Codes:	See <u>PRE EXPOSURE PROPHYLAXIS OFFER STATUS CODE</u>
Default Codes:	NA - Not Applicable (<u>PATIENT</u> not asked)

Notes:

PRE EXPOSURE PROPHYLAXIS OFFER STATUS CODE is the same as attribute PRE EXPOSURE PROPHYLAXIS OFFER STATUS CODE.

This data element is also known by these names:

Context	Alias
plural	PRE EXPOSURE PROPHYLAXIS OFFER STATUS CODES

PRE EXPOSURE PROPHYLAXIS OFFER STATUS CODE

Change to Data Element: New Data Element

PRE EXPOSURE PROPHYLAXIS OFFER STATUS CODE

Attribute:

PRE EXPOSURE PROPHYLAXIS OFFER STATUS CODE

PRE EXPOSURE PROPHYLAXIS STOPPED REASON

Change to Data Element: New Data Element

Format/Length:	an2
National Codes:	See <u>PRE EXPOSURE PROPHYLAXIS STOPPED REASON</u>
Default Codes:	NA - Not Applicable (<u>PATIENT</u> not asked)

Notes:

PRE EXPOSURE PROPHYLAXIS STOPPED REASON is the same as attribute PRE EXPOSURE PROPHYLAXIS STOPPED REASON.

This data element is also known by these names:

Context	Alias
plural	PRE EXPOSURE PROHYLAXIS STOPPED REASONS

PRE EXPOSURE PROPHYLAXIS STOPPED REASON

Change to Data Element: New Data Element

PRE EXPOSURE PROPHYLAXIS STOPPED REASON

Attribute:

PRE EXPOSURE PROPHYLAXIS STOPPED REASON

PRESCRIBED ITEM QUANTITY (PRE EXPOSURE PROPHYLAXIS)

Change to Data Element: New Data Element

Format/Length:	an2
National Codes:	See PRESCRIBED ITEM QUANTITY FOR PRE EXPOSURE PROPHYLAXIS
Default Codes:	NA - Not Applicable (PATIENT not asked)

Notes:

[PRESCRIBED ITEM QUANTITY \(PRE EXPOSURE PROPHYLAXIS\)](#) is the same as attribute [PRESCRIBED ITEM QUANTITY FOR PRE EXPOSURE PROPHYLAXIS](#).

This data element is also known by these names:

Context	Alias
plural	PRESCRIBED ITEM QUANTITIES (PRE EXPOSURE PROPHYLAXIS)

PRESCRIBED ITEM QUANTITY (PRE EXPOSURE PROPHYLAXIS)

Change to Data Element: New Data Element

PRESCRIBED ITEM QUANTITY (PRE EXPOSURE PROPHYLAXIS)

Attribute:

PRESCRIBED ITEM QUANTITY FOR PRE EXPOSURE PROPHYLAXIS

SERVICE TYPE (SEXUAL HEALTH)

Change to Data Element: New Data Element

Format/Length:	an2
National Codes:	See SERVICE TYPE FOR SEXUAL HEALTH
Default Codes:	

Notes:

[SERVICE TYPE \(SEXUAL HEALTH\)](#) is the same as attribute [SERVICE TYPE FOR SEXUAL HEALTH](#).

This data element is also known by these names:

Context	Alias
plural	SERVICE TYPES (SEXUAL HEALTH)

SERVICE TYPE (SEXUAL HEALTH)

Change to Data Element: New Data Element

SERVICE TYPE (SEXUAL HEALTH)

Attribute:

SERVICE TYPE FOR SEXUAL HEALTH
--

SEXUAL HEALTH AND HIV ACTIVITY HEALTH ISSUE (SNOMED CT)

Change to Data Element: New Data Element

Format/Length:	See SNOMED CT EXPRESSION
National Codes:	
Default Codes:	

Notes:

[SEXUAL HEALTH AND HIV ACTIVITY HEALTH ISSUE \(SNOMED CT\)](#) is the same as attribute [CLINICAL TERMINOLOGY CODE](#).

[SEXUAL HEALTH AND HIV ACTIVITY HEALTH ISSUE \(SNOMED CT\)](#) is the [SNOMED CT EXPRESSION](#) which is used to record a health issue identified at an attendance for a [Sexual Health Service](#).

NOTE: [SNOMED CT EXPRESSION](#) constraint for Health Issue: (<404684003 or <243796009)

This data element is also known by these names:

Context	Alias
plural	SEXUAL HEALTH AND HIV ACTIVITY HEALTH ISSUES (SNOMED CT)

SEXUAL HEALTH AND HIV ACTIVITY HEALTH ISSUE (SNOMED CT)

Change to Data Element: New Data Element

SEXUAL HEALTH AND HIV ACTIVITY HEALTH ISSUE (SNOMED CT)

Attribute:

CLINICAL TERMINOLOGY CODE

SEXUAL HEALTH AND HIV ACTIVITY PROCEDURE (SNOMED CT)

Change to Data Element: New Data Element

Format/Length:	See SNOMED CT EXPRESSION
National Codes:	
Default Codes:	

Notes:

[SEXUAL HEALTH AND HIV ACTIVITY PROCEDURE \(SNOMED CT\)](#) is the same as attribute [CLINICAL TERMINOLOGY CODE](#).

[SEXUAL HEALTH AND HIV ACTIVITY PROCEDURE \(SNOMED CT\)](#) is the [SNOMED CT EXPRESSION](#) which is used to identify the procedure relating to the activity undertaken at an attendance for a [Sexual Health Service](#).

NOTE: [SNOMED CT EXPRESSION](#) constraint for procedure: (<7138802 or <129152009)

This data element is also known by these names:

Context	Alias
plural	SEXUAL HEALTH AND HIV ACTIVITY PROCEDURES (SNOMED CT)

SEXUAL HEALTH AND HIV ACTIVITY PROCEDURE (SNOMED CT)

Change to Data Element: New Data Element

SEXUAL HEALTH AND HIV ACTIVITY PROCEDURE (SNOMED CT)

Attribute:

CLINICAL TERMINOLOGY CODE

SEXUAL HEALTH AND HIV ACTIVITY PROPERTY TYPE

Change to Data Element: Changed Dataset

Format/Length:	max an5
National Codes:	See SEXUAL HEALTH AND HIV ACTIVITY PROPERTY TYPE
Default Codes:	

Notes:

[SEXUAL HEALTH AND HIV ACTIVITY PROPERTY TYPE](#) is the same as attribute [SEXUAL HEALTH AND HIV ACTIVITY PROPERTY TYPE](#).

SEXUAL HEALTH SERVICE ATTENDANCE SOURCE (SNOMED CT)

Change to Data Element: New Data Element

Format/Length:	See SNOMED CT CODE
National Codes:	
Default Codes:	

Notes:

[SEXUAL HEALTH SERVICE ATTENDANCE SOURCE \(SNOMED CT\)](#) is the same as attribute [CLINICAL TERMINOLOGY CODE](#).

[SEXUAL HEALTH SERVICE ATTENDANCE SOURCE \(SNOMED CT\)](#) is the [SNOMED CT®](#) concept ID which is used to indicate the source of an attendance for a [Sexual Health Service](#).

SNOMED CT Subset Metadata:

- **Subset Name:** Sexual health source of attendance
- **Subset Original Id:** 77761000000130
- **Refset FSN:** Sexual health source of attendance simple reference set (foundation metadata concept)
- **Refset Id:** 999003111000000106

For further details relating to the **SNOMED CT Subset Metadata**, see the **Data Dictionary for Care (DD4C)** website at: [Sexual Health Source of Attendance](#).

This data element is also known by these names:

Context	Alias
snomedctsubsetoriginalid	77761000000130
snomedctrefsetname	Sexual health source of attendance simple reference set
snomedctsubsetname	Sexual health source of attendance
plural	SEXUAL HEALTH SERVICE ATTENDANCE SOURCES (SNOMED CT)
snomedctrefsetid	999003111000000106

SEXUAL HEALTH SERVICE ATTENDANCE SOURCE (SNOMED CT)

Change to Data Element: New Data Element

SEXUAL HEALTH SERVICE ATTENDANCE SOURCE (SNOMED CT)

Attribute:

[CLINICAL TERMINOLOGY CODE](#)

SEXUAL INTERCOURSE UNDER THE INFLUENCE OF SUBSTANCE INDICATOR

Change to Data Element: New Data Element

Format/Length:	max an2
National Codes:	See SEXUAL INTERCOURSE UNDER THE INFLUENCE OF SUBSTANCE INDICATOR NA - Not Applicable (PERSON not asked)

Notes:

[SEXUAL INTERCOURSE UNDER THE INFLUENCE OF SUBSTANCE INDICATOR](#) is the same as attribute [SEXUAL INTERCOURSE UNDER THE INFLUENCE OF SUBSTANCE INDICATOR](#).

This data element is also known by these names:

Context	Alias
plural	SEXUAL INTERCOURSE UNDER THE INFLUENCE OF SUBSTANCE INDICATORS

SEXUAL INTERCOURSE UNDER THE INFLUENCE OF SUBSTANCE INDICATOR

Change to Data Element: New Data Element

SEXUAL INTERCOURSE UNDER THE INFLUENCE OF SUBSTANCE INDICATOR

Attribute:

[SEXUAL INTERCOURSE UNDER THE INFLUENCE OF SUBSTANCE INDICATOR](#)

SEXUALLY TRANSMITTED INFECTION PATIENT DIAGNOSIS SYMPTOMATIC INDICATOR

Change to Data Element: New Data Element

Format/Length:	max an2
National Codes:	See SEXUALLY TRANSMITTED INFECTION PATIENT DIAGNOSIS SYMPTOMATIC INDICATOR
Default Codes:	NA - Not Applicable

Notes:

[SEXUALLY TRANSMITTED INFECTION PATIENT DIAGNOSIS SYMPTOMATIC INDICATOR](#) is the same as attribute [SEXUALLY TRANSMITTED INFECTION PATIENT DIAGNOSIS SYMPTOMATIC INDICATOR](#).

This data element is also known by these names:

Context	Alias
plural	SEXUALLY TRANSMITTED INFECTION PATIENT DIAGNOSIS SYMPTOMATIC INDICATORS

SEXUALLY TRANSMITTED INFECTION PATIENT DIAGNOSIS SYMPTOMATIC INDICATOR

Change to Data Element: New Data Element

SEXUALLY TRANSMITTED INFECTION PATIENT DIAGNOSIS SYMPTOMATIC INDICATOR

Attribute:

SEXUALLY TRANSMITTED INFECTION PATIENT DIAGNOSIS SYMPTOMATIC INDICATOR

SEXUAL ORIENTATION (CURRENT)

Change to Data Element: Changed Dataset, Description

Format/Length:	an1
National Codes:	See SEXUAL ORIENTATION CODE
Default Codes:	9 - Unknown

Notes:

[SEXUAL ORIENTATION \(CURRENT\)](#) is the same as attribute [SEXUAL ORIENTATION CODE](#).

[SEXUAL ORIENTATION \(CURRENT\)](#) is the current [SEXUAL ORIENTATION](#) of a [PERSON](#).

~~For the purposes of the [Genitourinary Medicine Clinic Activity Data Set](#), National Codes '4 [PERSON](#) asked and does not know or is not sure' and 'Z Not Stated ([PERSON](#) asked but declined to provide a response)' cannot be used.~~

~~National Codes 4 and Z should be mapped to '9 Unknown' for central reporting purposes.~~

[SEXUAL ORIENTATION \(CURRENT\)](#) will be replaced with [PERSON STATED SEXUAL ORIENTATION CODE](#), which is the most recent approved national information standard to describe the required definition.

SITE CODE (OF TREATMENT)

Change to Data Element: Changed Dataset, Description

Format/Length:	min an5 max an9
National Codes:	
ODS Default Codes :	R9998 - Not a hospital site
	89999 - Non-NHS UK Provider where no ORGANISATION SITE CODE has been issued
	89997 - Non-UK Provider where no ORGANISATION SITE CODE has been issued

Notes:

[SITE CODE \(OF TREATMENT\)](#) is the same as attribute [ORGANISATION SITE CODE](#).

[SITE CODE \(OF TREATMENT\)](#) is the [ORGANISATION SITE CODE](#) of the [Organisation](#) where the [PATIENT](#) was treated, i.e. it should enable the treating [Organisation](#) to be identified.

This identifies the [Organisation Site](#) within the [Organisation](#) on which the [PATIENT](#) was treated, since facilities may vary on different hospital sites.

The code recorded should always be the national code; if the treatment is sub-commissioned to another NHS [Health Care Provider](#) or an independent UK provider, the [SITE CODE \(OF TREATMENT\)](#) used should be the [ORGANISATION SITE CODE](#) of the [Health Care Provider](#) actually carrying out the work.

Where treatment is sub-commissioned to an overseas provider the [Organisation Data Service Default Code](#) 89997 'Non-UK Provider where no [ORGANISATION SITE CODE](#) has been issued' is applicable.

Each [Organisation](#) has a unique [ORGANISATION CODE](#). However, where an [Organisation](#) has more than one site from which it provides [SERVICES](#), then each site is uniquely identified. These sites are [Organisation Sites](#) and are uniquely identified by [ORGANISATION SITE CODE](#). The [ORGANISATION SITE CODE](#) contains the first 3 digits of the [ORGANISATION CODE](#) with the last two digits being the site identifier.

Example:

RA700 [ORGANISATION CODE](#) of the [Organisation](#)

- RA701 [ORGANISATION SITE CODE](#) of the first identified [Organisation Site](#) within the [Organisation](#)
 RA702 [ORGANISATION SITE CODE](#) of the second identified [Organisation Site](#) within the [Organisation](#)

For out-patients, [ACTIVITY](#) may take place outside the hospital, such as in the [PATIENT'S](#) home; in such cases, raising a site code is impractical. Therefore, code R9998 'Not a hospital site' would be used in these circumstances.

Note: [LOCATION CLASS](#) is used in the Commissioning Data Set (CDS) message to indicate the classification of the physical [LOCATION](#) within which the [ACTIVITY](#) occurred.

Use in the Future Outpatient CDS:

If the [INTENDED SITE CODE \(OF TREATMENT\)](#) is not known, this data element should be omitted.

[SITE CODE \(OF TREATMENT\)](#) will be replaced with [ORGANISATION SITE IDENTIFIER \(OF TREATMENT\)](#), when it has been approved for use in national information standards.

SNOMED CT EXPRESSION

Change to Data Element: Changed Description

Format/Length:	min-an6-max-an56
Format/Length:	an
National Codes:	
Default Codes:	

Notes:

[SNOMED CT EXPRESSION](#) is the same as attribute [CLINICAL TERMINOLOGY CODE](#).

[SNOMED CT EXPRESSION](#) is a structured combination of one or more [SNOMED CT](#) concept identifiers to express a clinical idea.

For further information on [SNOMED CT EXPRESSIONS](#), see the [SNOMED CT](#) Glossary at: [Expression](#).

SUBSTANCE INJECTED IN THE LAST THREE MONTHS INDICATOR

Change to Data Element: New Data Element

Format/Length:	max an2
National Codes:	See SUBSTANCE INJECTED IN THE LAST THREE MONTHS INDICATOR
Default Codes:	NA - Not Applicable (PERSON not asked)

Notes:

[SUBSTANCE INJECTED IN THE LAST THREE MONTHS INDICATOR](#) is the same as attribute [SUBSTANCE INJECTED IN THE LAST THREE MONTHS INDICATOR](#).

This data element is also known by these names:

Context	Alias
plural	SUBSTANCE INJECTED IN THE LAST THREE MONTHS INDICATORS

SUBSTANCE INJECTED IN THE LAST THREE MONTHS INDICATOR

Change to Data Element: New Data Element

SUBSTANCE INJECTED IN THE LAST THREE MONTHS INDICATOR

Attribute:

SUBSTANCE INJECTED IN THE LAST THREE MONTHS INDICATOR

SUBSTANCE INJECTED SHARED EQUIPMENT IN THE LAST THREE MONTHS INDICATOR

Change to Data Element: New Data Element

Format/Length:	max an2
National Codes:	See SUBSTANCE INJECTED SHARED EQUIPMENT IN THE LAST THREE MONTHS INDICATOR
Default Codes:	NA - Not Applicable (PERSON not asked)

Notes:

SUBSTANCE INJECTED SHARED EQUIPMENT IN THE LAST THREE MONTHS INDICATOR is the same as attribute SUBSTANCE INJECTED SHARED EQUIPMENT IN THE LAST THREE MONTHS INDICATOR

This data element is also known by these names:

Context	Alias
plural	SUBSTANCE INJECTED SHARED EQUIPMENT IN THE LAST THREE MONTHS INDICATORS

SUBSTANCE INJECTED SHARED EQUIPMENT IN THE LAST THREE MONTHS INDICATOR

Change to Data Element: New Data Element

SUBSTANCE INJECTED SHARED EQUIPMENT IN THE LAST THREE MONTHS INDICATOR

Attribute:

SUBSTANCE INJECTED SHARED EQUIPMENT IN THE LAST THREE MONTHS INDICATOR

SUBSTANCE USE IN THE LAST THREE MONTHS INDICATOR (AMPHETAMINE OR SPEED)

Change to Data Element: New Data Element

Format/Length:	max an2
National Codes:	See SUBSTANCE USE IN THE LAST THREE MONTHS INDICATOR
Default Codes:	NA - Not Applicable (PERSON not asked)

Notes:

SUBSTANCE USE IN THE LAST THREE MONTHS INDICATOR (AMPHETAMINE OR SPEED) is the same as attribute SUBSTANCE USE IN THE LAST THREE MONTHS INDICATOR, to indicate whether the PERSON has used the SUBSTANCE Amphetamine or Speed in the last three months.

This data element is also known by these names:

Context	Alias
plural	SUBSTANCE USE IN THE LAST THREE MONTHS INDICATORS (AMPHETAMINE OR SPEED)

SUBSTANCE USE IN THE LAST THREE MONTHS INDICATOR (AMPHETAMINE OR SPEED)

Change to Data Element: New Data Element

SUBSTANCE USE IN THE LAST THREE MONTHS INDICATOR (AMPHETAMINE OR SPEED)

Attribute:

SUBSTANCE USE IN THE LAST THREE MONTHS INDICATOR

SUBSTANCE USE IN THE LAST THREE MONTHS INDICATOR (BENZODIAZEPINES NON PRESCRIBED)

Change to Data Element: New Data Element

Format/Length:	max an2
National Codes:	See SUBSTANCE USE IN THE LAST THREE MONTHS INDICATOR
Default Codes:	NA - Not Applicable (PERSON not asked)

Notes:

SUBSTANCE USE IN THE LAST THREE MONTHS INDICATOR (BENZODIAZEPINES NON PRESCRIBED) is the same as attribute SUBSTANCE USE IN THE LAST THREE MONTHS INDICATOR, to indicate whether the PERSON has used the SUBSTANCE Non-Prescribed Benzodiazepines in the last three months.

This data element is also known by these names:

Context	Alias
plural	SUBSTANCE USE IN THE LAST THREE MONTHS INDICATORS (BENZODIAZEPINES NON PRESCRIBED)

SUBSTANCE USE IN THE LAST THREE MONTHS INDICATOR (BENZODIAZEPINES NON PRESCRIBED)

Change to Data Element: New Data Element

SUBSTANCE USE IN THE LAST THREE MONTHS INDICATOR (BENZODIAZEPINES NON PRESCRIBED)

Attribute:

SUBSTANCE USE IN THE LAST THREE MONTHS INDICATOR

SUBSTANCE USE IN THE LAST THREE MONTHS INDICATOR (CANNABIS)

Change to Data Element: New Data Element

Format/Length: max an2
National Codes: See SUBSTANCE USE IN THE LAST THREE MONTHS INDICATOR
Default Codes: NA - Not Applicable (PERSON not asked)

Notes:

SUBSTANCE USE IN THE LAST THREE MONTHS INDICATOR (CANNABIS) is the same as attribute SUBSTANCE USE IN THE LAST THREE MONTHS INDICATOR, to indicate whether the PERSON has used the SUBSTANCE Cannabis in the last three months.

This data element is also known by these names:

Context	Alias
plural	SUBSTANCE USE IN THE LAST THREE MONTHS INDICATORS (CANNABIS)

SUBSTANCE USE IN THE LAST THREE MONTHS INDICATOR (CANNABIS)

Change to Data Element: New Data Element

SUBSTANCE USE IN THE LAST THREE MONTHS INDICATOR (CANNABIS)

Attribute:

SUBSTANCE USE IN THE LAST THREE MONTHS INDICATOR

SUBSTANCE USE IN THE LAST THREE MONTHS INDICATOR (COCAINE)

Change to Data Element: New Data Element

Format/Length: max an2
National Codes: See SUBSTANCE USE IN THE LAST THREE MONTHS INDICATOR
Default Codes: NA - Not Applicable (PERSON not asked)

Notes:

SUBSTANCE USE IN THE LAST THREE MONTHS INDICATOR (COCAINE) is the same as attribute SUBSTANCE USE IN THE LAST THREE MONTHS INDICATOR, to indicate whether the PERSON has used the SUBSTANCE Cocaine in the last three months.

This data element is also known by these names:

Context	Alias
plural	SUBSTANCE USE IN THE LAST THREE MONTHS INDICATORS (COCAINE)

SUBSTANCE USE IN THE LAST THREE MONTHS INDICATOR (COCAINE)

Change to Data Element: New Data Element

SUBSTANCE USE IN THE LAST THREE MONTHS INDICATOR (COCAINE)

Attribute:

SUBSTANCE USE IN THE LAST THREE MONTHS INDICATOR

SUBSTANCE USE IN THE LAST THREE MONTHS INDICATOR (CRACK)

Change to Data Element: New Data Element

Format/Length: max an2
National Codes: See SUBSTANCE USE IN THE LAST THREE MONTHS INDICATOR
Default Codes: NA - Not Applicable (PERSON not asked)

Notes:

SUBSTANCE USE IN THE LAST THREE MONTHS INDICATOR (CRACK) is the same as attribute SUBSTANCE USE IN THE LAST THREE MONTHS INDICATOR, to indicate whether the PERSON has used the SUBSTANCE Crack in the last three months.

This data element is also known by these names:

Context	Alias
plural	SUBSTANCE USE IN THE LAST THREE MONTHS INDICATORS (CRACK)

SUBSTANCE USE IN THE LAST THREE MONTHS INDICATOR (CRACK)

Change to Data Element: New Data Element

SUBSTANCE USE IN THE LAST THREE MONTHS INDICATOR (CRACK)

Attribute:

SUBSTANCE USE IN THE LAST THREE MONTHS INDICATOR
--

SUBSTANCE USE IN THE LAST THREE MONTHS INDICATOR (CRYSTAL METH OR METHAMPHETAMINE)

Change to Data Element: New Data Element

Format/Length:	max an2
National Codes:	See SUBSTANCE USE IN THE LAST THREE MONTHS INDICATOR
Default Codes:	NA - Not Applicable (PERSON not asked)

Notes:

SUBSTANCE USE IN THE LAST THREE MONTHS INDICATOR (CRYSTAL METH OR METHAMPHETAMINE) is the same as attribute SUBSTANCE USE IN THE LAST THREE MONTHS INDICATOR, to indicate whether the PERSON has used the SUBSTANCE Crystal Meth or Methamphetamine in the last three months.

This data element is also known by these names:

Context	Alias
plural	SUBSTANCE USE IN THE LAST THREE MONTHS INDICATORS (CRYSTAL METH OR METHAMPHETAMINE)

SUBSTANCE USE IN THE LAST THREE MONTHS INDICATOR (CRYSTAL METH OR METHAMPHETAMINE)

Change to Data Element: New Data Element

SUBSTANCE USE IN THE LAST THREE MONTHS INDICATOR (CRYSTAL METH OR METHAMPHETAMINE)

Attribute:

SUBSTANCE USE IN THE LAST THREE MONTHS INDICATOR
--

SUBSTANCE USE IN THE LAST THREE MONTHS INDICATOR (ECSTASY OR METHYLENEDIOXYMETHAMPHETAMINE)

Change to Data Element: New Data Element

Format/Length:	max an2
National Codes:	See SUBSTANCE USE IN THE LAST THREE MONTHS INDICATOR
Default Codes:	NA - Not Applicable (PERSON not asked)

Notes:

SUBSTANCE USE IN THE LAST THREE MONTHS INDICATOR (ECSTASY OR METHYLENEDIOXYMETHAMPHETAMINE) is the same as attribute SUBSTANCE USE IN THE LAST THREE MONTHS INDICATOR, to indicate whether the PERSON has used the SUBSTANCE Ecstasy or Methylenedioxyamphetamine in the last three months.

This data element is also known by these names:

Context	Alias
plural	SUBSTANCE USE IN THE LAST THREE MONTHS INDICATORS (ECSTASY OR METHYLENEDIOXYMETHAMPHETAMINE)

SUBSTANCE USE IN THE LAST THREE MONTHS INDICATOR (ECSTASY OR METHYLENEDIOXYMETHAMPHETAMINE)

Change to Data Element: New Data Element

SUBSTANCE USE IN THE LAST THREE MONTHS INDICATOR (ECSTASY OR METHYLENEDIOXYMETHAMPHETAMINE)

Attribute:

SUBSTANCE USE IN THE LAST THREE MONTHS INDICATOR

SUBSTANCE USE IN THE LAST THREE MONTHS INDICATOR (GAMMAHYDROXYBUTYRATE OR GAMMABUTYROLACTONE)

Change to Data Element: New Data Element

Format/Length: max an2
National Codes: See SUBSTANCE USE IN THE LAST THREE MONTHS INDICATOR
Default Codes: NA - Not Applicable (PERSON not asked)

Notes:

SUBSTANCE USE IN THE LAST THREE MONTHS INDICATOR (GAMMAHYDROXYBUTYRATE OR GAMMABUTYROLACTONE) is the same as attribute SUBSTANCE USE IN THE LAST THREE MONTHS INDICATOR, to indicate whether the PERSON has used the SUBSTANCE Gammahydroxybutyrate or Gammabutyrolactone in the last three months.

This data element is also known by these names:

Context	Alias
plural	SUBSTANCE USE IN THE LAST THREE MONTHS INDICATORS (GAMMAHYDROXYBUTYRATE OR GAMMABUTYROLACTONE)

SUBSTANCE USE IN THE LAST THREE MONTHS INDICATOR (GAMMAHYDROXYBUTYRATE OR GAMMABUTYROLACTONE)

Change to Data Element: New Data Element

SUBSTANCE USE IN THE LAST THREE MONTHS INDICATOR (GAMMAHYDROXYBUTYRATE OR GAMMABUTYROLACTONE)

Attribute:

SUBSTANCE USE IN THE LAST THREE MONTHS INDICATOR

SUBSTANCE USE IN THE LAST THREE MONTHS INDICATOR (HEROIN)

Change to Data Element: New Data Element

Format/Length: max an2
National Codes: See SUBSTANCE USE IN THE LAST THREE MONTHS INDICATOR
Default Codes: NA - Not Applicable (PERSON not asked)

Notes:

SUBSTANCE USE IN THE LAST THREE MONTHS INDICATOR (HEROIN) is the same as attribute SUBSTANCE USE IN THE LAST THREE MONTHS INDICATOR, to indicate whether the PERSON has used the SUBSTANCE Heroin in the last three months.

This data element is also known by these names:

Context	Alias
plural	SUBSTANCE USE IN THE LAST THREE MONTHS INDICATORS (HEROIN)

SUBSTANCE USE IN THE LAST THREE MONTHS INDICATOR (HEROIN)

Change to Data Element: New Data Element

SUBSTANCE USE IN THE LAST THREE MONTHS INDICATOR (HEROIN)

Attribute:

SUBSTANCE USE IN THE LAST THREE MONTHS INDICATOR

SUBSTANCE USE IN THE LAST THREE MONTHS INDICATOR (KETAMINE)

Change to Data Element: New Data Element

Format/Length: max an2
National Codes: See SUBSTANCE USE IN THE LAST THREE MONTHS INDICATOR

Default Codes: NA - Not Applicable (PERSON not asked)

Notes:

SUBSTANCE USE IN THE LAST THREE MONTHS INDICATOR (KETAMINE) is the same as attribute SUBSTANCE USE IN THE LAST THREE MONTHS INDICATOR, to indicate whether the PERSON has used the SUBSTANCE Ketamine in the last three months.

This data element is also known by these names:

Context	Alias
plural	SUBSTANCE USE IN THE LAST THREE MONTHS INDICATORS (KETAMINE)

SUBSTANCE USE IN THE LAST THREE MONTHS INDICATOR (KETAMINE)

Change to Data Element: New Data Element

SUBSTANCE USE IN THE LAST THREE MONTHS INDICATOR (KETAMINE)

Attribute:

SUBSTANCE USE IN THE LAST THREE MONTHS INDICATOR

SUBSTANCE USE IN THE LAST THREE MONTHS INDICATOR (MEPHEDRONE)

Change to Data Element: New Data Element

Format/Length: max an2
National Codes: See SUBSTANCE USE IN THE LAST THREE MONTHS INDICATOR
Default Codes: NA - Not Applicable (PERSON not asked)

Notes:

SUBSTANCE USE IN THE LAST THREE MONTHS INDICATOR (MEPHEDRONE) is the same as attribute SUBSTANCE USE IN THE LAST THREE MONTHS INDICATOR, to indicate whether the PERSON has used the SUBSTANCE Mephedrone in the last three months.

This data element is also known by these names:

Context	Alias
plural	SUBSTANCE USE IN THE LAST THREE MONTHS INDICATORS (MEPHEDRONE)

SUBSTANCE USE IN THE LAST THREE MONTHS INDICATOR (MEPHEDRONE)

Change to Data Element: New Data Element

SUBSTANCE USE IN THE LAST THREE MONTHS INDICATOR (MEPHEDRONE)

Attribute:

SUBSTANCE USE IN THE LAST THREE MONTHS INDICATOR

SUBSTANCE USE IN THE LAST THREE MONTHS INDICATOR (METHADONE)

Change to Data Element: New Data Element

Format/Length: max an2
National Codes: See SUBSTANCE USE IN THE LAST THREE MONTHS INDICATOR
Default Codes: NA - Not Applicable (PERSON not asked)

Notes:

SUBSTANCE USE IN THE LAST THREE MONTHS INDICATOR (METHADONE) is the same as attribute SUBSTANCE USE IN THE LAST THREE MONTHS INDICATOR, to indicate whether the PERSON has used the SUBSTANCE Methadone in the last three months.

This data element is also known by these names:

Context	Alias
plural	SUBSTANCE USE IN THE LAST THREE MONTHS INDICATORS (METHADONE)

SUBSTANCE USE IN THE LAST THREE MONTHS INDICATOR (METHADONE)

Change to Data Element: New Data Element

SUBSTANCE USE IN THE LAST THREE MONTHS INDICATOR (METHADONE)

Attribute:

SUBSTANCE USE IN THE LAST THREE MONTHS INDICATOR

SUBSTANCE USE IN THE LAST THREE MONTHS INDICATOR (NOVEL PSYCHOACTIVE)

Change to Data Element: New Data Element

Format/Length:	max an2
National Codes:	See SUBSTANCE USE IN THE LAST THREE MONTHS INDICATOR
Default Codes:	NA - Not Applicable (PERSON not asked)

Notes:

[SUBSTANCE USE IN THE LAST THREE MONTHS INDICATOR \(NOVEL PSYCHOACTIVE\)](#) is the same as attribute [SUBSTANCE USE IN THE LAST THREE MONTHS INDICATOR](#), to indicate whether the [PERSON](#) has used the [SUBSTANCE](#) Novel Psychoactive in the last three months.

This data element is also known by these names:

Context	Alias
plural	SUBSTANCE USE IN THE LAST THREE MONTHS INDICATORS (NOVEL PSYCHOACTIVE)

SUBSTANCE USE IN THE LAST THREE MONTHS INDICATOR (NOVEL PSYCHOACTIVE)

Change to Data Element: New Data Element

SUBSTANCE USE IN THE LAST THREE MONTHS INDICATOR (NOVEL PSYCHOACTIVE)

Attribute:

[SUBSTANCE USE IN THE LAST THREE MONTHS INDICATOR](#)

SUBSTANCE USE IN THE LAST THREE MONTHS INDICATOR (POPPERS)

Change to Data Element: New Data Element

Format/Length:	max an2
National Codes:	See SUBSTANCE USE IN THE LAST THREE MONTHS INDICATOR
Default Codes:	NA - Not Applicable (PERSON not asked)

Notes:

[SUBSTANCE USE IN THE LAST THREE MONTHS INDICATOR \(POPPERS\)](#) is the same as attribute [SUBSTANCE USE IN THE LAST THREE MONTHS INDICATOR](#), to indicate whether the [PERSON](#) has used the [SUBSTANCE](#) Poppers in the last three months.

This data element is also known by these names:

Context	Alias
plural	SUBSTANCE USE IN THE LAST THREE MONTHS INDICATORS (POPPERS)

SUBSTANCE USE IN THE LAST THREE MONTHS INDICATOR (POPPERS)

Change to Data Element: New Data Element

SUBSTANCE USE IN THE LAST THREE MONTHS INDICATOR (POPPERS)

Attribute:

[SUBSTANCE USE IN THE LAST THREE MONTHS INDICATOR](#)

SUBSTANCE USE IN THE LAST THREE MONTHS INDICATOR (RECREATIONAL DRUGS)

Change to Data Element: New Data Element

Format/Length:	max an2
National Codes:	See SUBSTANCE USE IN THE LAST THREE MONTHS INDICATOR
Default Codes:	NA - Not Applicable (PERSON not asked)

Notes:

[SUBSTANCE USE IN THE LAST THREE MONTHS INDICATOR \(RECREATIONAL DRUGS\)](#) is the same as attribute [SUBSTANCE USE IN THE LAST THREE MONTHS INDICATOR](#), to indicate whether the [PERSON](#) has used the [SUBSTANCE](#) Recreational Drugs in the last three months.

This data element is also known by these names:

Context	Alias
plural	SUBSTANCE USE IN THE LAST THREE MONTHS INDICATORS (RECREATIONAL DRUGS)

SUBSTANCE USE IN THE LAST THREE MONTHS INDICATOR (RECREATIONAL DRUGS)

Change to Data Element: New Data Element

SUBSTANCE USE IN THE LAST THREE MONTHS INDICATOR (RECREATIONAL DRUGS)

Attribute:

SUBSTANCE USE IN THE LAST THREE MONTHS INDICATOR
--

SUBSTANCE USE IN THE LAST THREE MONTHS INDICATOR (SOLVENTS OR GLUE)

Change to Data Element: New Data Element

Format/Length:	max an2
National Codes:	See SUBSTANCE USE IN THE LAST THREE MONTHS INDICATOR
Default Codes:	NA - Not Applicable (PERSON not asked)

Notes:

SUBSTANCE USE IN THE LAST THREE MONTHS INDICATOR (SOLVENTS OR GLUE) is the same as attribute SUBSTANCE USE IN THE LAST THREE MONTHS INDICATOR, to indicate whether the PERSON has used the SUBSTANCE Solvents or Glue within the last three months.

This data element is also known by these names:

Context	Alias
plural	SUBSTANCE USE IN THE LAST THREE MONTHS INDICATORS (SOLVENTS OR GLUE)

SUBSTANCE USE IN THE LAST THREE MONTHS INDICATOR (SOLVENTS OR GLUE)

Change to Data Element: New Data Element

SUBSTANCE USE IN THE LAST THREE MONTHS INDICATOR (SOLVENTS OR GLUE)

Attribute:

SUBSTANCE USE IN THE LAST THREE MONTHS INDICATOR
--

SUBSTANCE USE IN THE LAST THREE MONTHS INDICATOR (UNCLASSIFIED SUBSTANCE)

Change to Data Element: New Data Element

Format/Length:	max an2
National Codes:	See SUBSTANCE USE IN THE LAST THREE MONTHS INDICATOR
Default Codes:	NA - Not Applicable (PERSON not asked)

Notes:

SUBSTANCE USE IN THE LAST THREE MONTHS INDICATOR (UNCLASSIFIED SUBSTANCE) is the same as attribute SUBSTANCE USE IN THE LAST THREE MONTHS INDICATOR, to indicate whether the PERSON has used an Unclassified SUBSTANCE within the last three months.

This data element is also known by these names:

Context	Alias
plural	SUBSTANCE USE IN THE LAST THREE MONTHS INDICATORS (UNCLASSIFIED SUBSTANCE)

SUBSTANCE USE IN THE LAST THREE MONTHS INDICATOR (UNCLASSIFIED SUBSTANCE)

Change to Data Element: New Data Element

SUBSTANCE USE IN THE LAST THREE MONTHS INDICATOR (UNCLASSIFIED SUBSTANCE)

Attribute:

SUBSTANCE USE IN THE LAST THREE MONTHS INDICATOR
--

For enquiries about this Change Request, please email information.standards@nhs.net

