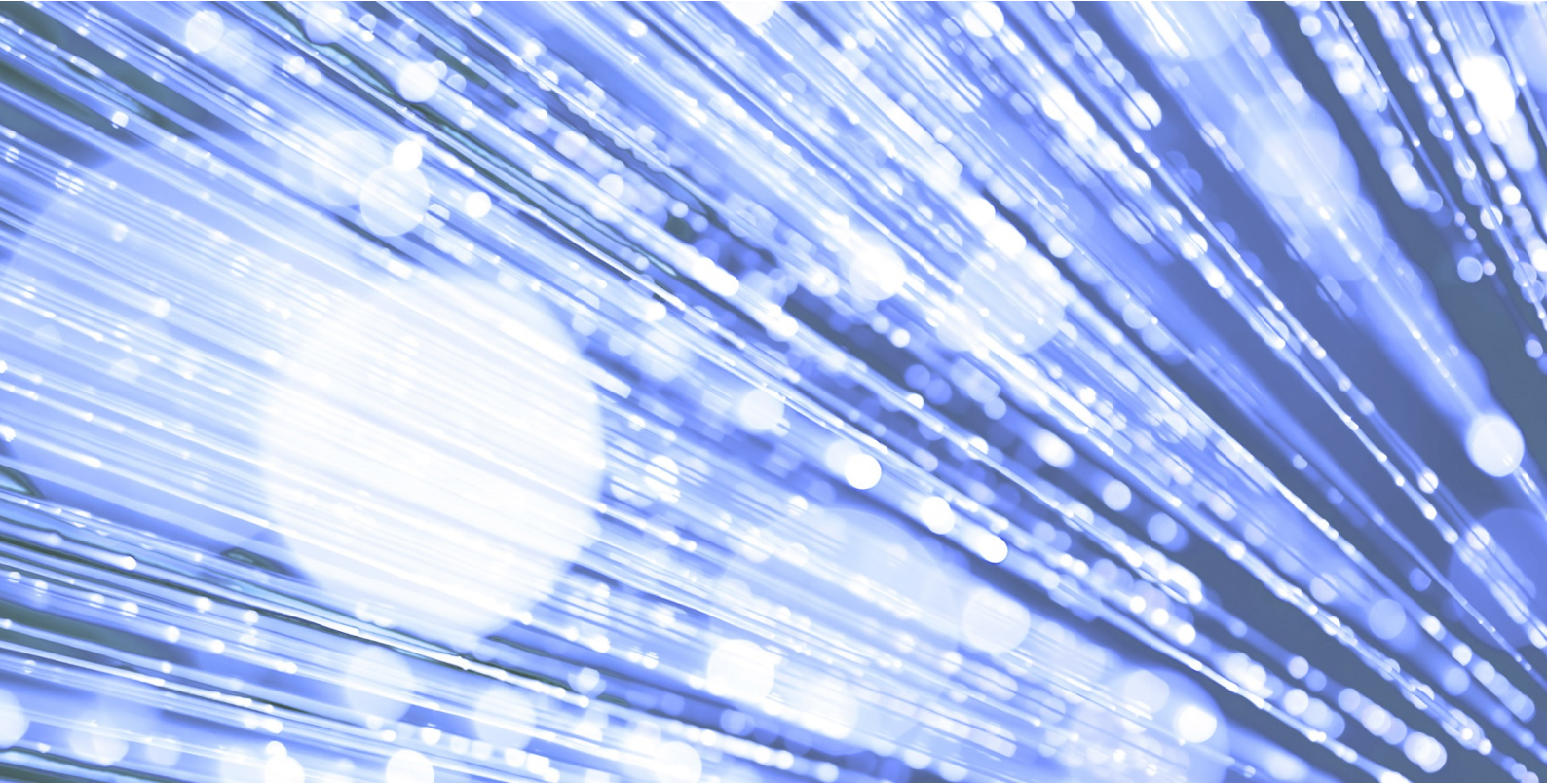


DCB0028 Amd 45/2019

# Treatment Function and Main Specialty Standard Change Specification

Published 2 April 2020 (updated 11 December 2020)



**Information and technology**  
**for better health and care**

# Data Coordination Board

This information standard (DCB0028) has been approved for publication by NHS England under [section 250 of the Health and Social Care Act 2012](#).

Assurance that this information standard meets the requirements of the Act and is appropriate for the use specified in the specification document has been provided by the Data Standards Assurance Service (DSAS) and approved by the Data Coordination Board (DCB).

This information standard comprises the following documents:

- Requirements Specification
- Change Specification
- Implementation Guidance.

An Information Standards Notice (DCB0028 Amd 45/2019) has been issued as a notification of use and implementation timescales. Please read this alongside the documents for the standard.

The controlled copies of these documents can be found on [the NHS Digital website](#). Any copies held outside of that area, in whatever format (e.g. paper, email attachment), are considered to have passed out of control and should be checked for currency and validity.

Date of publication: 2 April 2020 (updated 11 December 2020)



This information is licensed under the Open Government Licence v3.0. To view this licence, visit <http://www.nationalarchives.gov.uk/doc/open-government-licence/> or write to the Information Policy Team, The National Archives, Kew, Richmond, Surrey, TW9 4DU.

## Glossary of Terms

A full Glossary of Terms for the Treatment Function and Main Specialty Standard can be found within the [Requirements Specification](#).

# Contents

---

<b>1. Overview</b>	<b>4</b>
1.1. Background	4
1.2. Supporting documents	4
1.3. Related standards	5
<b>2. Change specification</b>	<b>6</b>
2.1. Reason for release	6
2.2. Change specification	8
2.3. Benefits of the changes	11
<b>Appendix A: List of TFC description changes</b>	<b>12</b>

# 1. Overview

## 1.1. Background

The Treatment Function and Main Specialty Standard covers the respective classifications used to support the national reporting and analysis of clinical workforce activity throughout the NHS, through data sets such as the Commissioning Data Sets (CDS).

Treatment Function Codes (TFCs) are used to record, report on, extract and flow activities undertaken, irrespective of the type of Healthcare Professional who performs them, and their use is not restricted to consultants.

Main Specialty is the specialty within which a Consultant is recognised or contracted to the organisation and it is principally aligned to specialties recognised by the Royal Colleges and Faculties and the General Dental Council. Main Specialties have historically been aligned to the European Specialist Medical Qualifications Order 1995 and European Primary and Specialist Dental Qualifications Regulations 1998, in Anglicised form. It is too soon to say whether professions will continue to be aligned; however changes to the list are governed by the [‘Health Care and Associated Professions’ statutory instruments](#).

The former ‘National Specialty List’ standard was last updated in 2012. The specific aims of this update are to:

- improve data quality by introducing new TFCs for services that are not currently represented as a treatment function, enabling commissioning of new services that are not currently represented in the TFC list
- re-name treatment functions that are considered out-dated
- modify the definitions of treatment functions that are unclear or no longer accurate
- update the list of Main Specialties to ensure that the list is aligned with the relevant statutory instrument
- clarify the future scope of TFCs that represent specialised services
- update the criteria used to define TFCs
- update the standard’s name
- define the future update process for TFCs.

## 1.2. Supporting documents

This document should be read in conjunction with the following:

Ref #	Title
1	<a href="#">Treatment Function and Main Specialty Standard - Requirements Specification</a>
2	<a href="#">Treatment Function and Main Specialty Standard - Code List Specification</a>
3	<a href="#">Treatment Function and Main Specialty Standard - Implementation Guidance</a>
4	<a href="#">NHS Data Model and Dictionary Change Request</a>

Please see the *Implementation Guidance* for a full list and descriptions of each related document.

## 1.3. Related standards

Reference	Title
DCB0011	Mental Health Services Data Set (MHSDS)
DCB1513	Maternity Services Data Set (MSDS)
ISB 0092	Commissioning Data Sets (CDS)
DCB0092-2062	Commissioning Data Sets: Emergency Care Data Set
ISB 0153	Critical Care Minimum Data Set
DCB2212	Drugs Patient Level Contract Monitoring
DCB3003	Patient Level Contract Monitoring
DCB2050	Aggregate Contract Monitoring
DCB2123	Patient Level Information and Costing Systems (PLICS) Data Set
SCCI2026	Female Genital Mutilation Enhanced Dataset
ISB 0112	Inter-Provider Transfer Administrative Minimum Data Set
SCCI0034	SNOMED CT
SCCI0021	International Classification of Diseases

## 2. Change specification

### 2.1. Reason for release

The reasons for this release are set out below. They have been discussed and agreed by the Treatment Function Maintenance Group (TFMG), and verified through feedback received through a public consultation.

#### 2.1.1. Amendments to TFCs

As outlined in Section 1.1, the current list of TFCs was last updated in 2012. This updated includes the addition of new TFCs, changes to existing TFCs and the removal of defunct codes. These updates help to re-align the list with how services and care are now provided by clinicians. The details of these changes are shown in Sections 2.2.1, 2.2.2 and 2.2.3.

#### 2.1.2. Amendments to Main Specialty Codes

There are minor changes to the Main Specialty Code list. The list is governed by the [‘Health Care and Associated Professions’ statutory instruments](#), and the changes have been made to ensure that the Main Specialty Code list matches the statutory instrument. The details of these changes are shown in Section 2.2.4.

#### 2.1.3. TFCs that represent specialised services

This release of the Treatment Function and Main Specialty Standard also introduces some future changes to how specialised services are handled in the TFC list. The [Treatment Function Eligibility Criteria](#) used to determine whether new or amended TFCs should be accepted clarifies that TFCs “must be a distinct area of clinical care” and are “not usually a specific type of treatment”. The current criteria therefore exclude the development of codes purely to cover specialised services, particularly where a ‘non-specialised’ equivalent exists alongside this. The existing codes representing specialised services do not meet the existing criteria but were considered a tactical solution at the time they were accepted, pending updates to CDS.

In addition, there are 146 specialised services commissioned by NHS England. If a TFC was created to represent every specialised service in the future, the list would become unworkable for analysis purposes.

Based on this, the Treatment Function Maintenance Group (TFMG) determined that no further codes representing specialised services are added to the TFC list. Specialised services will instead be represented through introduction of the existing NHS Data Model and Dictionary data item [Specialised Service Code](#) in the forthcoming CDS v6.3. This data item can be used to indicate the type of specialised service that has delivered relevant activity.

It is also proposed that the existence of TFCs representing specialised services should be time limited. The proposed deadline for the current specialised TFCs to be removed is April 2022.

### 2.1.4. Update the criteria used to define TFCs

Consideration has been made to making a number of changes to the scope and inclusion criteria of the Treatment Function and Main Specialty Standard. The following recommendations have been made by the TFMG and clarified in [the Treatment Function Eligibility Criteria](#):

- TFCs will continue to primarily apply to acute services. However, this will be reviewed for the next release, with the potential to formally expand the scope in future to include codes such as 'Community Paediatrics Service' and 'District Nursing Service'
- TFCs covering different care settings (i.e. not just hospitals) will continue to be included (e.g. 'Diabetic Education Service')
- age-related services will continue to be distinct TFCs (e.g. paediatric codes like 'Paediatric Neurosurgery').

### 2.1.5. Update the standard's name

The standard was previously called 'National Specialty List', but has been renamed 'Treatment Function and Main Specialty Standard' to better reflect its scope.

As services are increasingly run without any consultant input, TFCs have increasingly diverged from simply representing main specialties to potentially representing other types of services, for example community services. Naming the standard in this way ensures it is future-proofed against any future scope changes.

The remainder of this document details the specific changes made within this release (Section 2.2), and the associated benefits (Section 2.3).

## 2.2. Change specification

This section sets out the specific changes made as part of this release. For a full list of TFCs and Main Specialty Codes, please see the *Treatment Function and Main Specialty Standard Code List Specification*.

### 2.2.1. Addition of new TFCs

New TFCs have been added as part of this release. These codes are as follows:

Code	TFC Name
109	Bariatric Surgery Service
111	Orthopaedic Service
113	Endocrine Surgery Service
115	Trauma Surgery Service
145	Oral and Maxillofacial Surgery Service
200	Aviation and Space Medicine Service
230	Paediatric Clinical Pharmacology Service
240	Paediatric Palliative Medicine Service
250	Paediatric Hepatology Service
270	Paediatric Emergency Medicine Service
326	Acute Internal Medicine Service
333	Rare Disease Service
335	Inherited Metabolic Medicine Service
347	Sleep Medicine Service
431	Orthogeriatric Medicine Service
451	Special Care Dentistry Service
461	Ophthalmic and Vision Science Service
504	Community Sexual Health and Reproduction Service
505	Fetal Medicine Service
670	Urological Physiology Service
673	Vascular Physiology Service
675	Cardiac Physiology Service
677	Gastrointestinal Physiology Service
730	Neuropsychiatry Service

## 2.2.2. Update to names of existing TFCs

All TFCs have been amended to incorporate the word 'Service' in their title, where this wording was not already present.

In addition, the following specific changes to TFC names have been made:

Code	Old TFC Name	New TFC Name
102	Transplantation Surgery	Transplant Surgery Service
120	ENT	Ear Nose and Throat Service
150	Neurosurgery	Neurosurgical Service
180	Accident & Emergency	Emergency Medicine Service
192	Critical Care Medicine	Intensive Care Medicine Service
217	Paediatric Maxillo-Facial Surgery	Paediatric Oral and Maxillofacial Surgery Service
254	Paediatric Audiological Medicine	Paediatric Audio Vestibular Medicine Service
261	Paediatric Metabolic Disease	Paediatric Inherited Metabolic Medicine Service
263	Paediatric Diabetic Medicine	Paediatric Diabetes Service
300	General Medicine	General Internal Medicine Service
307	Diabetic Medicine	Diabetes Service
310	Audiological Medicine	Audio Vestibular Medicine Service
314	Rehabilitation Service	Rehabilitation Medicine Service
342	Programmed Pulmonary Rehabilitation	Pulmonary Rehabilitation Service
361	Nephrology	Renal Medicine Service
422	Neonatology	Neonatal Critical Care Service
430	Geriatric Medicine	Elderly Medicine Service
450	Dental Medicine Specialties	Dental Medicine Service
659	Drama Therapy	Dramatherapy Service
710	Adult Mental Illness	Adult Mental Health Service
713	Psychotherapy	Medical Psychotherapy Service
724	Perinatal Psychiatry	Perinatal Mental Health Service

## 2.2.3. Updates to descriptions of existing TFCs

All TFC descriptions have been amended to make it clear that they represent services. Wording such as "Services for..." or "Dedicated children's services for..." has therefore been added where this wording was not already present.

In addition, further changes to descriptions/definitions have been made. These generally fall into the following categories:

- Further detail added to the description for clarity, for example the addition of further information about the service
- Rewording of the previous description for clarity, for example amending the order of a sentence but without adding any new information
- Additional exclusions added, i.e. other TFCs that can be used to capture activity excluded from a specific TFC are listed
- Superfluous wording removed, e.g. a sentence from the previous definition is removed because it is inaccurate or doesn't provide any useful information
- Definition updated to reference the previous name of the TFC.

Due to the number of changes and to maintain the readability of this document, these changes are listed in Appendix A.

## 2.2.4. Changes to Main Specialties

The following changes have been made to Main Specialty Codes as part of this standard.

Code	Main Specialty Code Name	Change made
107	Vascular Surgery	New code
120	Ear Nose and Throat	Name change – previously “ENT”
180	Emergency Medicine	Name change – previously “ACCIDENT & EMERGENCY”
192	Intensive Care Medicine	Name change – previously “CRITICAL CARE MEDICINE”
200	Aviation and Space Medicine	New code
300	General Internal Medicine	Name change – previously “GENERAL MEDICINE”
302	Endocrinology and Diabetes	Name change – previously “ENDOCRINOLOGY”
310	Audio Vestibular Medicine	Name change – previously “AUDIOLOGICAL MEDICINE”
313	Clinical Immunology	Name change – previously “CLINICAL IMMUNOLOGY and ALLERGY”
314	Rehabilitation Medicine	Name change – previously “REHABILITATION”
317	Allergy	New code
361	Renal Medicine	Name change – previously “NEPHROLOGY”
450	Dental Medicine	Name change – previously “DENTAL MEDICINE SPECIALTIES”
560	Midwifery	Name change – previously “MIDWIFE EPISODE”
713	Medical Psychotherapy	Name change – previously “PSYCHOTHERAPY”
950	Nursing	Name change – previously “NURSING EPISODE”
960	Allied Health Professional	Name change – previously “ALLIED HEALTH PROFESSIONAL EPISODE”

## 2.2.5. Future updates to TFCs representing specialised services

The following TFCs representing specialised services will be retired from use in April 2022. This is subject to CDS v6.3 go-live, and the ability to flow SNOMED CT codes and the [Specialised Service Code](#) data item within CDS v6.3:

- 344 - Complex Specialised Rehabilitation Service
- 345 - Specialist Rehabilitation Service
- 346 - Local Specialist Rehabilitation Service

Other codes may also be removed at a later date, but this will be subject to consideration by the TFMG and confirmed through the publication of an updated version of this standard.

## 2.3. Benefits of the changes

### 2.3.1. Financial benefits

- Improve identification of specialised services that are commissioned centrally by NHS England, for example specialist fetal medicine centres, through use of the separate Specialised Service Code data item in CDS alongside the updated TFC list. If the full capabilities of SNOMED CT are used within data sets such as CDS in the future, audit mechanisms can validate service provision against service specification.
- Better reporting of certain areas of care so that they can be funded correctly, for example vascular physiology which is a distinct clinical role. There are many specialties within the current Clinical Physiology TFC, and at the moment it is not possible to identify nationally the proportion of this activity that is related to ophthalmic/vision science which is an expanding field of physiology due to an aging population. This may be leading to underfunding for ophthalmic/vision science services, as assumptions are made about what happens rather than capturing the full clinical pathway that is delivered.

### 2.3.2. Non-financial benefits

- Improved data quality due to new codes and descriptions more accurately reflecting current clinical practice.
- Consistent approach within TFC list, in that (in the long term) no specialised services are included.
- The list of TFCs fulfils the current, updated Treatment Function Eligibility Criteria, as published alongside this information standard.

Through only making minor updates to the TFC list (i.e. not adding further codes representing specialised services), the list of TFCs remains concise and workable for analysis. Duplication, which could lead to confusion, is also avoided.

## Appendix A: List of TFC description changes

Code	TFC name	Previous TFC description	New TFC description	Details of change
100	General Surgery Service	Includes sub-categories not elsewhere listed e.g. endocrine surgery	SERVICES delivering surgical ACTIVITY not covered by other subspecialty areas. The majority of elective procedures, about 80 per cent, fall outside subspecialty areas.	Further detail added for clarity
101	Urology Service	Surgical treatment of disorders of the urinary system and male reproductive system	Surgical SERVICES for the treatment of disorders of the urinary system and male reproductive system. This includes surgery for gender dysphoria.	Further detail added for clarity (now includes gender dysphoria)
102	Transplant Surgery Service	Includes pre- and post-operative care for major organ transplants except heart and lung (see Cardiothoracic Transplantation). Excludes corneal grafts	SERVICES for pre- and post-operative care for major organ transplants except heart and lung. Excludes Cardiothoracic Transplantation Service - see TREATMENT FUNCTION CODE 174, corneal grafts carried out by Ophthalmology Service - see TREATMENT FUNCTION CODE 130 and Blood and Bone Marrow Transplantation Service - see TREATMENT FUNCTION CODE 308	Additional exclusions added
103	Breast Surgery Service	Includes treatment for cancer, suspected neoplasms, cysts and post-cancer reconstructive surgery. Excludes cosmetic surgery	SERVICES which include surgical treatment for cancer, suspected neoplasms, indeterminate breast lesions, benign breast lumps, disorders of the nipple-areolar complex, cysts and post-cancer reconstructive, revision and symmetrising surgery. Includes breast surgery for gender dysphoria. Excludes cosmetic surgery.	Further detail added for clarity (now includes gender dysphoria and further surgical examples)

Code	TFC name	Previous TFC description	New TFC description	Details of change
105	Hepatobiliary and Pancreatic Surgery Service	Includes liver surgery, but liver transplantation should be recorded in 102 Transplantation Surgery	Specialist surgical SERVICES for hepatobiliary and pancreatic (HPB) disorders. To be used by recognised specialist units and associated outreach SERVICES only. Excludes Transplant Surgery Service - see TREATMENT FUNCTION CODE 102.	Further detail added for clarity (reference to specialised services)
108	Spinal Surgery Service	Surgery concentrating on specialised and complex treatment of the back and spine. The SERVICE has a significantly different composition and profile from the SERVICE provided in TREATMENT FUNCTION CODE - 110 Trauma & Orthopaedic. Excludes Spinal Injuries - see TREATMENT FUNCTION CODE 323	Surgery concentrating on specialised and complex treatment of issues of the back and spine. To be used by recognised specialist units and associated outreach SERVICES only. Excludes Trauma and Orthopaedic Service - see TREATMENT FUNCTION CODE 110 and Orthopaedic Service - see TREATMENT FUNCTION CODE 111 and Trauma Surgery Service - see TREATMENT FUNCTION CODE 115 and Spinal Injuries Service - see TREATMENT FUNCTION CODE 323.	Additional exclusions added
110	Trauma and Orthopaedics Service	Surgery to treat injuries, congenital and acquired disorders of the bones, joints, and their associated soft tissues, including ligaments, nerves and muscles. Excludes Spinal Surgery Service - see TREATMENT FUNCTION CODE 108	SERVICES to treat injuries, congenital and acquired disorders of the bones, joints, and their associated soft tissues, including ligaments, nerves and muscles. Excludes Orthopaedic Surgery Service - TREATMENT FUNCTION CODE 111 and Spinal Surgery Service - see TREATMENT FUNCTION CODE 108. For major trauma centres use Trauma Surgery Service - see TREATMENT FUNCTION CODE 115.	Additional exclusions added
120	Ear Nose and Throat Service	Ear, nose and throat	Formerly known as ENT. Surgical SERVICES for the assessment, diagnosis, management and treatment of ear, nose and/or throat issues. Excludes Audiology Service - see TREATMENT FUNCTION CODE 840.	Further detail added for clarity

Code	TFC name	Previous TFC description	New TFC description	Details of change
130	Ophthalmology Service	The surgical treatment of disorders and diseases of the eye. Excludes Medical Ophthalmology - see TREATMENT FUNCTION CODE 460	The surgical treatment of disorders and diseases of the eye. Excludes Medical Ophthalmology Service - see TREATMENT FUNCTION CODE 460 and Ophthalmic and Vision Science Service - see TREATMENT FUNCTION CODE 461	Additional exclusions added
140	Oral Surgery Service	The diagnosis and surgical treatment of diseases, injuries and defects involving both the functional and aesthetic aspects of the hard and soft tissues of the head, mouth, teeth, gums, jaws and neck	SERVICES for the diagnosis and surgical treatment of diseases, injuries and defects of hard and soft tissues of the mouth.  Excludes departments delivering a service where oral surgery and maxillofacial services are mixed (i.e. an outpatient clinic accepting oral surgery and maxillofacial surgery patients) – see TREATMENT FUNCTION CODE 145.	Further detail added for clarity
141	Restorative Dentistry Service	Endodontics, Periodontics and Prosthodontics are all part of Restorative Dentistry	SERVICES providing examination and treatment of diseases of the oral cavity, the teeth and their supporting structures. Restorative Dentistry includes the dental specialties of Endodontics, Periodontics and Prosthodontics (including implantology), and its foundation is based upon how these interact in the management of cases requiring multifaceted care.	Further detail added for clarity
144	Maxillofacial Surgery Service	Mouth, jaw and face related surgery	Professional recommendation is to use Oral and Maxillofacial Surgery Service where this service is combined with oral surgery - see TREATMENT FUNCTION CODE 145. Alternatively, for oral surgery services only see TREATMENT FUNCTION CODE 140.  This code has been retained for existing SERVICES which only provide maxillofacial surgery.	Updated to reflect recommendation to use new combined code

Code	TFC name	Previous TFC description	New TFC description	Details of change
150	Neurosurgical Service	The prevention, diagnosis, treatment, and rehabilitation of disorders which affect any portion of the nervous system including the brain, spinal cord, peripheral nerves, and extra-cranial cerebrovascular system	Surgical SERVICES for the treatment of disorders of the nervous system including the brain, spinal cord, peripheral nerves, and extra-cranial cerebrovascular system. Excludes Spinal Surgery Service - see TREATMENT FUNCTION CODE 108. For major trauma centres use Trauma Surgery Service – see TREATMENT FUNCTION CODE 115.	Superfluous wording removed; additional exclusions added
160	Plastic Surgery Service	SERVICES to correct or restore form and function. In addition to cosmetic or aesthetic surgery, plastic surgery includes many types of reconstructive surgery, and the treatment of burns	SERVICES to correct or restore form and function. In addition to cosmetic or aesthetic surgery, plastic surgery includes many types of reconstructive surgery, and the treatment of burns. For care given within specialist burn services, use Burns Care Service - see TREATMENT FUNCTION CODE 161. Excludes breast surgery for gender dysphoria, use Breast Surgery Service - see TREATMENT FUNCTION CODE 103.	Additional exclusions added
161	Burns Care Service	To be used by recognised specialist units and associated outreach SERVICES only	SERVICES for the surgical and non-surgical treatment of burns within recognised specialist burns units and associated outreach SERVICES only. Whilst this does not signify the CRITICAL CARE LEVEL, many PATIENTS will also come within the scope of the CRITICAL CARE MINIMUM DATA SET.	Further detail added for clarity
170	Cardiothoracic Surgery Service	Should only be used where there are no separate SERVICES for Cardiac Surgery and Thoracic Surgery	SERVICES delivering surgical treatment of diseases affecting the heart and organs inside the thorax (the chest). Should only be used where there are no separate SERVICES for Cardiac Surgery and Thoracic Surgery.	Further detail added for clarity

Code	TFC name	Previous TFC description	New TFC description	Details of change
172	Cardiac Surgery Service	Surgical treatment of the heart or great vessels	SERVICES delivering surgical treatment of diseases affecting the heart. Procedures are often lengthy and complex, requiring support from advanced forms of technology during surgery and CRITICAL CARE LEVEL 2 and 3 for the PATIENT after surgery.	Further detail added for clarity
173	Thoracic Surgery Service	Surgical treatment of diseases affecting organs inside the thorax (the chest). Generally treatment of conditions of the lungs, chest wall, and diaphragm	SERVICES providing surgical treatment of diseases affecting organs inside the thorax (the chest). Generally treatment of conditions of the lungs, chest wall, and diaphragm. Predominantly this is surgical treatment of malignant disease or its effects.	Further detail added for clarity
174	Cardiothoracic Transplantation Service	To be used by recognised specialist units and associated outreach services only. Includes pre- and post-operative services	SERVICES for pre- and post-operative care for heart and lung transplants. To be used by recognised specialist units and associated outreach services only.	Further detail added for clarity
180	Emergency Medicine Service	SERVICES to care for PATIENTS with urgent problems delivered as part of an Accident and Emergency Attendance or admission at an Accident and Emergency Department	SERVICES to care for PATIENTS with urgent problems delivered as part of an Emergency Care Attendance. Excludes Trauma Surgery Service - see TREATMENT FUNCTION CODE 115.	Additional exclusion added
190	Anaesthetic Service	This can be used in out-patients only. Pain Management should be recorded in 191	SERVICES for PATIENTS being assessed for anaesthesia, as well as the provision of sedation and anaesthesia for patients undergoing interventional radiology and radiotherapy. This can be used in out-patients only. Pain Management Service should be recorded in TREATMENT FUNCTION CODE 191. Intensive Care Medicine Service should be recorded in TREATMENT FUNCTION CODE 192.	Further detail added for clarity

Code	TFC name	Previous TFC description	New TFC description	Details of change
192	Intensive Care Medicine Service	also known as Intensive Care Medicine	Formerly known as Critical Care Medicine. SERVICES using a body of specialist knowledge and practice concerned with the treatment of PATIENTS, with, at risk of, or recovering from potentially life-threatening failure of one or more of the body's organ systems. It includes the provision of organ system support, the investigation, diagnosis, and treatment of acute illness, systems management and PATIENT safety, ethics, end-of-life care, and the support of families. Typically, this will refer to CRITICAL CARE LEVEL 2 and 3 beds within the scope of the CRITICAL CARE MINIMUM DATA SET.	Further detail added for clarity
212	Paediatric Transplantation Surgery Service	Includes pre- and post-operative care for major organ transplants except heart and lung (see Cardiothoracic Transplantation). Excludes corneal grafts	Dedicated children's SERVICES for pre- and post-operative care for major organ transplants except heart and lung. Excludes Paediatric Cardiac Surgery Service - see TREATMENT FUNCTION CODE 221, Paediatric Thoracic Surgery Service - see TREATMENT FUNCTION CODE 222, corneal grafts carried out by Paediatric Ophthalmology Service - see TREATMENT FUNCTION CODE 216 and Blood and Bone Marrow Transplantation Service - see TREATMENT FUNCTION CODE 308.	Additional exclusions added
214	Paediatric Trauma and Orthopaedic Service	Surgery to treat injuries, congenital and acquired disorders of the bones, joints, and their associated soft tissues, including ligaments, nerves and muscles. Excludes Spinal Surgery Service - see TREATMENT FUNCTION CODE 108	Dedicated children's SERVICES to treat injuries, congenital and acquired disorders of the bones, joints, and their associated soft tissues, including ligaments, nerves and muscles. Excludes Trauma Surgery Service - see TREATMENT FUNCTION CODE 115 and Spinal Surgery Service - see TREATMENT FUNCTION CODE 108	Additional exclusions added

Code	TFC name	Previous TFC description	New TFC description	Details of change
215	Paediatric Ear Nose and Throat Service	Ear, nose and throat	Dedicated children's surgical SERVICES for the assessment, diagnosis, management and treatment of ear, nose and/or throat issues. Excludes Audiology Service - see TREATMENT FUNCTION CODE 840	Further detail added for clarity
217	Paediatric Oral and Maxillofacial Surgery Service	Mouth, jaw and face related surgery	Dedicated children's SERVICES providing diagnosis and surgical treatment of diseases, injuries and defects involving hard and soft tissues of the mouth, jaws, and neck. Excludes Paediatric Dentistry Services - see TREATMENT FUNCTION CODE 142.	Further detail added for clarity
218	Paediatric Neurosurgery Service	The prevention, diagnosis, treatment, and rehabilitation of disorders which affect any portion of the nervous system including the brain, spinal cord, peripheral nerves, and extra-cranial cerebrovascular system	Dedicated children's SERVICES for the surgical treatment of disorders which affect any portion of the nervous system including the brain, spinal cord, peripheral nerves, and extra-cranial cerebrovascular system.	Superfluous wording removed (just covers surgical treatment)
219	Paediatric Plastic Surgery Service	SERVICES to correct or restore form and function. In addition to cosmetic or aesthetic surgery, plastic surgery includes many types of reconstructive surgery, and the treatment of burns	Dedicated children's SERVICES for correction or to restore form and function. In addition to cosmetic or aesthetic surgery, plastic surgery includes many types of reconstructive surgery, and the treatment of burns. For care given within specialist paediatric burn services, use Paediatric Burns Care Service - see TREATMENT FUNCTION CODE 220	Additional exclusion added
220	Paediatric Burns Care Service	To be used by recognised specialist units and associated outreach SERVICES only	Dedicated children's SERVICES for the surgical and non-surgical treatment of burns within recognised specialist burns units and associated outreach SERVICES only. Whilst this does not signify the CRITICAL CARE LEVEL, many PATIENTS will also come within the scope of the CRITICAL CARE MINIMUM DATA SET.	Further detail added for clarity

Code	TFC name	Previous TFC description	New TFC description	Details of change
252	Paediatric Endocrinology Service	The treatment of disorders of the endocrine system	Dedicated children's SERVICES for the treatment of disorders of the endocrine system. Excludes Paediatric Diabetes Service - see TREATMENT FUNCTION CODE 263	additional exclusion added
253	Paediatric Clinical Haematology Service	Excludes Anticoagulant Service - see TREATMENT FUNCTION CODE 324	Dedicated children's SERVICES contributing to the diagnosis and management of diseases of the blood and bone marrow. May be consultative in other specialties including intensive care. Excludes Anticoagulant Service - see TREATMENT FUNCTION CODE 324	Further detail added for clarity
255	Paediatric Clinical Immunology and Allergy Service	Clinical Immunology is the treatment of disorders of the immune system. Allergy Service is the diagnosis and management of allergic disease	Dedicated children's SERVICES for the treatment of disorders of the immune system and allergic disease.	Reworded for clarity
258	Paediatric Respiratory Medicine Service	Also known as Thoracic Medicine	Dedicated children's SERVICES for the diagnosis and treatment of respiratory conditions. Also known as Thoracic Medicine and Pulmonary Medicine.	Further detail added for clarity
259	Paediatric Nephrology Service	SERVICES to treat kidney conditions and abnormalities	Dedicated children's SERVICES for the diagnosis and treatment of kidney conditions and abnormalities. Also known as Renal Medicine.	Further detail added for clarity (also known as)
261	Paediatric Inherited Metabolic Medicine Service	The diagnosis and management of inherited metabolic conditions	Dedicated children's SERVICES for the diagnosis and management of inherited metabolic conditions utilising biochemistry and metabolic characteristics requiring the expertise of both the physician and chemical pathologist.	Further detail added for clarity
262	Paediatric Rheumatology Service	SERVICES to treat rheumatism, arthritis, and other disorders of the joints, muscles and ligaments	Dedicated children's SERVICES incorporating the investigation, multidisciplinary holistic management and rehabilitation of PATIENTS with a wide spectrum of disorders of the musculoskeletal system encompassing the	Further detail added for clarity

Code	TFC name	Previous TFC description	New TFC description	Details of change
			locomotor apparatus, bone and connective tissues and blood vessels.	
290	Community Paediatrics Service	Includes routine health surveillance, health promotion, behavioural paediatrics and Looked After Children. Excludes Paediatric Neuro-Disability	SERVICES providing assessment and care to vulnerable children, including those with developmental disorders and disabilities, complex behavioural presentations, and those at risk of abuse or who are suspected of being a victim of abuse. Excludes Paediatric Neurodisability Service - see TREATMENT FUNCTION CODE 291.	Further detail added for clarity
291	Paediatric Neurodisability Service	Dedicated SERVICES for children with Cerebral Palsy and non-progressive handicapping neurological conditions, with or without Learning Disability	Dedicated children's SERVICES for the diagnosis and treatment of Cerebral Palsy and non-progressive handicapping neurological conditions, with or without Learning Disability/Intellectual Disability.	Further detail added for clarity
300	General Internal Medicine Service	Includes sub-categories not elsewhere listed e.g. Metabolic Medicine.	Formerly known as general medicine. SERVICES include adults admitted as emergencies with acute medical problems, including multiple disorders. PATIENTS with problems that are not clearly within the remit of a particular medical specialty are referred for the opinion of a general physician.	Further detail added for clarity
301	Gastroenterology Service	The treatment of disorders of the digestive system	Screening, diagnostic and therapeutic endoscopy SERVICES including upper and lower gastrointestinal (GI) endoscopy and hepatobiliary endoscopy. Excludes Hepatology Service - see TREATMENT FUNCTION CODE 306.	Further detail added for clarity
302	Endocrinology Service	The treatment of disorders of the endocrine system	The treatment of disorders of the endocrine system, excluding specific Diabetes Services - see TREATMENT FUNCTION CODE 307.	Additional exclusion added

Code	TFC name	Previous TFC description	New TFC description	Details of change
303	Clinical Haematology Service	Excludes Anticoagulant Service - see TREATMENT FUNCTION CODE 324	SERVICES contributing to the diagnosis and management of diseases of the blood and bone marrow. May be consultative in other specialties including intensive care. Excludes Anticoagulant Service - see TREATMENT FUNCTION CODE 324	Further detail added for clarity
304	Clinical Physiology Service	Physiological measurement including ECG (e.g. exercise testing, stress testing), gastrointestinal physiology, cardiac physiology, vascular technology, urodynamics, and ophthalmic and vision science. Excludes Clinical Neurophysiology - see TREATMENT FUNCTION CODE 401, Audiology - see TREATMENT FUNCTION CODE 840 or Respiratory Physiology - see TREATMENT FUNCTION CODE 341	Physiological measurement. Excludes Clinical Neurophysiology Service - see TREATMENT FUNCTION CODE 401, Audiological Service - see TREATMENT FUNCTION CODE 840, Respiratory Physiology Service - see TREATMENT FUNCTION CODE 341, Cardiac Physiology Service - see TREATMENT FUNCTION CODE 675, Gastrointestinal Physiology Service - see TREATMENT FUNCTION CODE 677, Urological Physiology Service - see TREATMENT FUNCTION CODE 670, Vascular Physiology Service - see TREATMENT FUNCTION CODE 673 and Ophthalmic and Vision Science - see TREATMENT FUNCTION CODE 461	Additional exclusions added
305	Clinical Pharmacology Service	SERVICES providing drug information, medication safety and other aspects of pharmacy practice	SERVICES undertaking and interpreting clinical investigations including clinical trials; optimising the therapeutic use of drugs; detection and analysis of adverse drug effects; contribution to medicines evaluation and management of poisoning.	Further detail added for clarity
306	Hepatology Service	Also known as liver medicine	Medical SERVICES for the diagnosis and treatment of liver disease. Also known as liver medicine. For hepatobiliary endoscopy, use Gastroenterology Service - see TREATMENT FUNCTION CODE 301	Further detail added for clarity; additional exclusion added

Code	TFC name	Previous TFC description	New TFC description	Details of change
308	Blood and Marrow Transplantation Service	Previously coded within Clinical Haematology (TREATMENT FUNCTION CODE 303). Includes haemopoietic stem cell transplantation	SERVICES recognised as specialist units and associated outreach services only. Includes pre- and post-operative specialised services for autologous, allogeneic or syngeneic Blood and Marrow Transplantation.	Further detail added for clarity
309	Haemophilia Service	Previously coded within Clinical Haematology (TREATMENT FUNCTION CODE 303).	Specialist SERVICES for the diagnosis, treatment and management of haemophilia.	Further detail added for clarity
310	Audio Vestibular Medicine Service	The medical specialty concerned with the investigation, diagnosis and management of patients with disorders of balance, hearing, tinnitus and auditory communication. Excludes audiology and hearing tests	Formerly known as Audiological Medicine. SERVICES concerned with the diagnosis and management of hearing and balance disorders, for example tinnitus, dysacusis and communication disorders. Rehabilitative/habilitative care is delivered by multidisciplinary teams and is aimed at improving the well-being and quality of life of the PATIENT concerned. Excludes Audiology Service - see TREATMENT FUNCTION CODE 840.	Further detail added for clarity
311	Clinical Genetics Service	Diagnosis of disorders caused by genetic mechanisms and counselling SERVICE to PATIENTS and affected family members. To be used by recognised specialist units and associated outreach SERVICES only	SERVICES for the diagnosis and management of genetic disorders affecting individuals and their families.	Further detail added for clarity

Code	TFC name	Previous TFC description	New TFC description	Details of change
313	Clinical Immunology and Allergy Service	Should only be used where there are no separate SERVICES for Clinical Immunology and Allergy	SERVICES for the diagnosis and management of PATIENTS with diseases resulting from disordered immunological mechanisms, and allergic disease (abnormal immune responses to external substances). Should only be used where there are no separate SERVICES for Clinical Immunology and Allergy. For separate services - See Clinical Immunology Service - TREATMENT FUNCTION CODE 316 and Allergy Service - see TREATMENT FUNCTION CODE 317	Further detail added for clarity; exclusion added
314	Rehabilitation Medicine Service	SERVICES to enhance and restore functional ability and quality of life to those with physical impairments or disabilities. Excludes Mental Health Recovery and Rehabilitation Service - see TREATMENT FUNCTION CODE 725	SERVICES for the prevention, diagnosis, treatment and rehabilitation management of disabling conditions. Rehabilitation medicine is broadly divided into neurological rehabilitation, spinal cord injury, limb loss and prosthetics and/or musculoskeletal rehabilitation.  Excludes Mental Health Recovery and Rehabilitation Service - see TREATMENT FUNCTION CODE 725, Cardiac Rehabilitation Service - see TREATMENT FUNCTION CODE 327, Pulmonary Rehabilitation Service - see TREATMENT FUNCTION CODE 342, Orthotics Service - See TREATMENT FUNCTION CODE 658 or Prosthetics Service - see TREATMENT FUNCTION CODE 657	Further detail added for clarity; exclusion added
315	Palliative Medicine Service	The treatment for curable illnesses and those living with chronic diseases, as well as PATIENTS who are nearing the end of life	SERVICES improving the quality of life of PATIENTS and their families facing the problems associated with life-limiting illness and end of life care. Prevention and relief of suffering by means of early identification, assessment and treatment	Further detail added for clarity

Code	TFC name	Previous TFC description	New TFC description	Details of change
			of pain and other physical, psychosocial and spiritual problems.	
316	Clinical Immunology Service	The treatment of disorders of the immune system	SERVICES for the diagnosis and management of PATIENTS with diseases resulting from disordered immunological mechanisms, and conditions in which immunological manipulations form an important part of therapy. Allergy SERVICES should be recorded against Allergy Service - see TREATMENT FUNCTION CODE 317	Further detail added for clarity
320	Cardiology Service	SERVICES treating diseases and abnormalities of the heart	SERVICES for PATIENTS with heart disease covering a wide range of clinical activities. Management can involve interventional treatment, cardiac imaging, preventative and therapeutic options. This includes both diagnostic and interventional procedures in the cardiac catheterisation laboratory.	Further detail added for clarity
321	Paediatric Cardiology Service	Dedicated SERVICES to children with diseases and abnormalities of the heart, with appropriate facilities and support staff	Dedicated children's SERVICES for diseases and abnormalities of the heart.  Excludes Congenital Heart Disease Service - see TREATMENT FUNCTION CODE 331	Further detail added for clarity
322	Clinical Microbiology Service	SERVICES to treat diseases caused by bacteria, viruses, fungi and parasites	SERVICES for the diagnosis, management and treatment of PATIENTS with diseases caused by bacteria, viruses, fungi and parasites.	Further detail added for clarity

Code	TFC name	Previous TFC description	New TFC description	Details of change
323	Spinal Injuries Service	To be used by recognised specialist units and associated outreach SERVICES only, Excludes Spinal Surgery Service - see TREATMENT FUNCTION CODE 108	SERVICES for non-surgical management of issues of the back and spine. To be used by recognised specialist units and associated outreach SERVICES only. Excludes Spinal Surgery Service - see TREATMENT FUNCTION CODE 108	Further detail added for clarity
325	Sport and Exercise Medicine Service	The diagnosis and management of medical problems caused by physical activity, the prevention of related injury and disease and the role of exercise in disease treatment	Specific SERVICES providing diagnosis and management of medical problems caused by physical activity, the prevention of related injury and disease and the role of exercise in disease treatment. Excludes Trauma and Orthopaedic Service - see TREATMENT FUNCTION CODE 110, Orthopaedic Surgery Service - see TREATMENT FUNCTION CODE 111, and Trauma Surgery Service - see TREATMENT FUNCTION CODE 115.	Additional exclusions added
327	Cardiac Rehabilitation Service	Rehabilitation SERVICE for PATIENTS with or recovering from heart related conditions such as heart attacks or from procedures such as coronary artery bypass surgery to ensure that they achieve their full potential in terms of physical and psychological health	SERVICES for PATIENTS recovering from heart-related conditions such as heart attacks or procedures such as coronary artery bypass surgery to ensure that they achieve their full potential in terms of physical and psychological health.	Reworded for clarity
328	Stroke Medicine Service	For stroke services excluding Transient Ischaemic Attack - see TREATMENT FUNCTION CODE 329	SERVICES for diagnosis, investigation, treatment and care of stroke PATIENTS. Excludes out-patients for Transient Ischaemic Attack Service - see TREATMENT FUNCTION CODE 329.	Further detail added for clarity

Code	TFC name	Previous TFC description	New TFC description	Details of change
329	Transient Ischaemic Attack Service	A multidisciplinary SERVICE for rapid diagnosis and treatment of PATIENTS presenting with suspected Transient Ischaemic Attack and mini-strokes to minimise the chance of a full stroke occurring and maximise the chances of independent living after a stroke	A multidisciplinary out-patient SERVICE for rapid diagnosis and treatment of PATIENTS presenting with suspected Transient Ischaemic Attack and mini-strokes to minimise the chance of a full stroke occurring and maximise the chances of independent living after a stroke.	Further detail added for clarity (reference to out-patient service)
330	Dermatology Service	SERVICES for the treatment of diseases of the skin	SERVICES for the diagnosis, management and treatment of diseases of the skin.	Further detail added for clarity
331	Congenital Heart Disease Service	The management and treatment of congenital heart disease, this includes the ongoing care of children in to adulthood	SERVICES for the management and treatment of congenital heart disease, including the ongoing care of children into adulthood.	Reworded for clarity
340	Respiratory Medicine Service	Also known as Thoracic Medicine	Respiratory Medicine is also known as Thoracic Medicine and Pulmonary Medicine. SERVICES for the investigation, diagnosis, management and treatment of PATIENTS with respiratory complaints. Excludes acute respiratory failure and adult respiratory distress syndrome (ARDS) - see Intensive Care Medicine Service TREATMENT FUNCTION CODE 192 and Respiratory Physiology Service - see TREATMENT FUNCTION CODE 341.	Further detail added for clarity
341	Respiratory Physiology Service	Physiological measurement of the function of the respiratory system. Includes Sleep Studies (the diagnosis and treatment of sleep disordered breathing, including upper airway resistance syndrome and sleep apnoea)	SERVICES for the physiological measurement of the function of the respiratory system. Excludes Sleep Medicine Service - see TREATMENT FUNCTION CODE 347	Additional exclusion added

Code	TFC name	Previous TFC description	New TFC description	Details of change
342	Pulmonary Rehabilitation Service	A multidisciplinary programme of care for PATIENTS with chronic respiratory impairment that is individually tailored and designed to optimise the individual's physical and social performance and autonomy	A multidisciplinary SERVICE for PATIENTS with chronic respiratory impairment	Superfluous wording removed
343	Adult Cystic Fibrosis Service	Specialised, multidisciplinary SERVICE concerned with the diagnosis, assessment and management of PATIENTS with cystic fibrosis. This TREATMENT FUNCTION CODE should be used by recognised specialist centres only	Multidisciplinary SERVICE concerned with the diagnosis, assessment and management of PATIENTS with cystic fibrosis. This TREATMENT FUNCTION CODE should be used by designated specialist centres only.	Superfluous wording removed
350	Infectious Diseases Service	SERVICES to diagnose and treat contagious or communicable diseases	SERVICES for the diagnosis, management and treatment of infectious diseases. Excludes Tropical Medicine Service - see TREATMENT FUNCTION CODE 352	Further detail added for clarity; exclusion added
352	Tropical Medicine Service	SERVICES to diagnose and treat diseases that are found most often in tropical or sub-tropical regions	SERVICES for the diagnosis, management and treatment of diseases that are found most often in tropical or sub-tropical regions. This TREATMENT FUNCTION CODE should be used by designated specialist centres only. Excludes Infectious Diseases Service - see TREATMENT FUNCTION CODE 350.	Further detail added for clarity; exclusion added
360	Genitourinary Medicine Service	Primarily related to medicine dealing with sexually transmitted diseases	SERVICES for the investigation and management of sexually transmitted infections and HIV.	Further detail added for clarity
370	Medical Oncology Service	The diagnosis and treatment, typically with Chemotherapy, of PATIENTS with cancer	SERVICES for the specialised assessment and management of patients with cancer using chemotherapy. Includes treatment option discussions with patients, supervision of therapy	Further detail added for clarity

Code	TFC name	Previous TFC description	New TFC description	Details of change
			and management of any complications of disease and/or treatment that may arise.	
371	Nuclear Medicine Service	The treatment of PATIENTS through the use of radioactive substances	SERVICES responsible for administration of unsealed radioactive substances to PATIENTS for the purposes of diagnosis, therapy or research.	Further detail added for clarity
400	Neurology Service	SERVICES to diagnose and treat conditions and diseases of the central nervous system	SERVICES for the diagnosis, management and medical treatment of neurological conditions. Excludes Stroke Medicine Service - TREATMENT FUNCTION CODE 328, out-patients for Transient Ischaemic Attack Service – see TREATMENT FUNCTION CODE 329.	Further detail added for clarity; additional exclusions added
401	Clinical Neurophysiology Service	The study of the central and peripheral nervous systems through the recording of bioelectrical activity. Includes Electroencephalogram (EEG)	Primarily diagnostic SERVICE concerned with recording electrical activity from the nervous system to aid diagnosis, classification and management of neurological disease. Includes Electroencephalogram (EEG) and Electromyography (EMG).	Further detail added for clarity
410	Rheumatology Service	SERVICES to treat rheumatism, arthritis, and other disorders of the joints, muscles and ligaments	SERVICES incorporating the investigation, holistic management and rehabilitation of PATIENTS with a wide spectrum of disorders of the musculoskeletal system encompassing the locomotor apparatus, bone and connective tissues and blood vessels.	Further detail added for clarity
420	Paediatric Service	SERVICES to treat infants, children, and adolescents	Dedicated children's SERVICES for the treatment of patients typically aged 0 to 18 for medical conditions, however the environments and other members of the multidisciplinary service are likely to care for surgical PATIENTS too.	Further detail added for clarity

Code	TFC name	Previous TFC description	New TFC description	Details of change
421	Paediatric Neurology Service	Dedicated SERVICES to children to diagnose and treat conditions and diseases of the central nervous system, with appropriate facilities and support staff	Dedicated children's SERVICES for diagnosis, management and medical treatment of conditions and diseases of the central nervous system, with appropriate facilities and support staff. Excludes Paediatric Epilepsy Service – see TREATMENT FUNCTION CODE 223.	Additional exclusion added
422	Neonatal Critical Care Service	Special Care, High Dependency and Intensive Care	<p>SERVICES providing care for all babies that require on-going, enhanced medical care following birth. Neonatal critical care services are provided in a variety of settings dependent upon the interventions required for the baby and with dedicated transport services to support babies being transferred to and from neonatal care units. Use when NEONATAL LEVEL OF CARE = 1, 2 or 3. Includes Special Care Baby Units (SCBU), Local Neonatal Units (LNU) and Neonatal Intensive Care Units (NICU).</p> <p>Any readmission would be to Paediatric Service - see TREATMENT FUNCTION CODE 420, or Paediatric Intensive Care Service - see TREATMENT FUNCTION CODE 242.</p>	Further detail added for clarity
424	Well Baby Service	Use when NEONATAL LEVEL OF CARE = 0 - Normal Care: Care given by the mother/substitute with medical and neonatal nursing advice if needed. See Well Baby	<p>SERVICES for healthy infants born and referenced by the Maternity record who do not require any intervention other than health screening and prophylactic healthcare. General care given by the mother/substitute with healthcare education if needed. Use when NEONATAL LEVEL OF CARE = 0 - Normal Care.</p> <p>Excludes Neonatal Critical Care Service - see TREATMENT FUNCTION CODE 422</p>	Further detail added for clarity

Code	TFC name	Previous TFC description	New TFC description	Details of change
430	Elderly Medicine Service	SERVICES to treat diseases and disabilities in older adults. There is no set age at which PATIENTS may be under the care of Geriatric Medicine, this decision should be determined by the individual PATIENT's needs	Formerly known as Geriatric Medicine. SERVICES to treat diseases and disabilities in older adults, particularly those with multiple morbidities. There is no set age at which PATIENTS may be under the care of the Elderly Medicine Service, this decision should be determined by the individual PATIENT's needs.	Further detail added for clarity
450	Dental Medicine Service	Includes Oral Medicine.	SERVICES for dental treatment carried out in a hospital setting. Includes Oral Medicine	Further detail added for clarity
460	Medical Ophthalmology Service	SERVICES to diagnose and treat medical conditions affecting the eye, orbits, and visual pathways	Medically-led SERVICES including assessment, investigation, diagnosis and management of inflammatory, vascular and neurological disorders affecting vision. May include public health screening, for example diabetic retinopathy screening.	Further detail added for clarity
502	Gynaecology Service	Disorders of the female reproductive system. Includes planned terminations	SERVICES for the diagnosis, management and treatment of disorders of the female reproductive system. Includes planned terminations of pregnancy	Further detail added for clarity
503	Gynaecological Oncology Service	SERVICES to treat cancers of the female reproductive system	SERVICES to treat cancers of the female reproductive system, principally involving surgical members of the Multidisciplinary Team.	Further detail added for clarity
560	Midwifery Service	SERVICES provided under the direct care of a MIDWIFE. Excludes Obstetrics see TREATMENT FUNCTION CODE 501	SERVICES for managing antenatal and perinatal care during pregnancy, and postnatal care following delivery, provided under the direct care of a MIDWIFE. Excludes Obstetrics - see TREATMENT FUNCTION CODE 501.	Further detail added for clarity

Code	TFC name	Previous TFC description	New TFC description	Details of change
650	Physiotherapy Service	The treatment of human function and movement to help people to achieve their full physical potential. The use of physical approaches to promote, maintain and restore wellbeing	SERVICES helping PATIENTS affected by injury, illness or disability through movement and exercise, manual therapy, education and advice to manage pain and prevent disease. To encourage development and facilitate recovery, enabling maintenance of work and independence for as long as possible.	Further detail added for clarity
652	Speech and Language Therapy Service	The assessment, treatment and help to prevent speech, language and swallowing difficulties	SERVICES providing assessment, management and treatment of speech, language, communication and swallowing issues in PATIENTS of all ages	Further detail added for clarity
654	Dietetics Service	The application of the science of nutrition to devise eating plans for PATIENTS to treat medical conditions. The promotion of good health by helping to facilitate a positive change in food choices amongst individuals, groups and communities	SERVICES applying the science of nutrition to improve health and treat diseases/conditions by educating and giving practical, personalised advice to patients, patient proxies and other members of the multidisciplinary team. They advise on and help to maintain nutritional status during dietary interventions such as exclusion diets and to recommend nutritional supplements	Further detail added for clarity
656	Clinical Psychology Service	The diagnosis and treatment of emotional and behavioural disorders	Mental Health SERVICES for the assessment, management and treatment of problems including addiction, anxiety, depression, behavioural difficulties and relationship issues. Methods of assessment include psychometric tests, interviews and direct observation of behaviour. Assessment may lead to advice, counselling or therapy.	Further detail added for clarity

Code	TFC name	Previous TFC description	New TFC description	Details of change
657	Prosthetics Service	The supply of prosthetics for PATIENTS	SERVICES providing gait analysis and engineering solutions to patients with limb loss. They design and provide prostheses that replicate the structural or functional characteristics of the PATIENTS absent limb. They often work autonomously or part of Multidisciplinary Teams working closely with Physiotherapists and Occupational Therapists as part of multidisciplinary amputee rehabilitation teams.	Further detail added for clarity
658	Orthotics Service	The supply of orthoses for PATIENTS	SERVICES providing gait analysis and engineering solutions to patients with needs of the neuro, muscular and skeletal systems. They design and provide orthoses that modify the structural or functional characteristics of the PATIENTS neuro-muscular and skeletal systems enabling patients to mobilise, eliminate gait deviations, reduce falls, reduce pain, prevent and facilitate healing of ulcers. They often work autonomously or part of multidisciplinary teams such as within the diabetic foot team or neuro-rehabilitation team.	Further detail added for clarity
659	Dramatherapy Service	The use of drama and theatre techniques including role play, voice work and storytelling for therapeutic purposes	SERVICES providing dramatherapy which is a form of psychological therapy focussing on the use of performance arts within the therapeutic relationship.	Further detail added for clarity
660	Art Therapy Service	The use of art techniques including clay, paint and paper for therapeutic purposes and as a means of communication	SERVICES delivering a form of psychotherapy that uses art media as its primary mode of expression and communication. Within this context, art is not used as diagnostic tool but as a medium to address emotional issues which may be confusing and distressing.	Further detail added for clarity

Code	TFC name	Previous TFC description	New TFC description	Details of change
661	Music Therapy Service	The use of music and all of its facets to help clients to improve or maintain their health	SERVICES delivering a form of psychotherapy that uses music to support psychological, emotional, cognitive, physical, communicative and/or social needs	Further detail added for clarity
663	Podiatric Surgery Service	The treatment of foot problems, including soft tissue, bone and joint surgery of the foot, ankle and associated structures, excludes Podiatry see TREATMENT FUNCTION CODE - 653	SERVICES involved in the complex management of the foot and ankle involving surgery under both local and general anaesthetic. Excludes Podiatry Service - see TREATMENT FUNCTION CODE - 653	Further detail added for clarity
700	Learning Disability Service	SERVICES provided to PATIENTS with a Learning Disability	Mental Health SERVICES provided to PATIENTS with a learning disability.  Also known as Intellectual Disability Service.	Wording updated to reference alternative TFC name
710	Adult Mental Health Service	SERVICES provided to adult PATIENTS for the assessment, diagnosis and treatment of mental illness	Mental Health SERVICES provided to adult PATIENTS for the assessment, diagnosis and treatment of mental illness and maintenance of mental health.	Further detail added for clarity
711	Child and Adolescent Psychiatry Service	SERVICES providing diagnosis, treatment, and prevention of psychopathological disorders of children and adolescents	Mental Health SERVICES for children and young people with somatisation and complex presentations, behavioural challenges, eating disorders, mood disorders, anxiety, and other mental health presentations. Excludes Paediatric Neurodisability Service - see TREATMENT FUNCTION CODE 291 and specialist Eating Disorders Service - see TREATMENT FUNCTION CODE 720	Further detail added for clarity

Code	TFC name	Previous TFC description	New TFC description	Details of change
712	Forensic Psychiatry Service	SERVICES to assess PATIENTS who have committed an offence and are receiving treatment in high, medium and low secure units or prisons	Mental Health SERVICES for the assessment, management and treatment of PATIENTS who are being held in high, medium and low secure units or prisons. This includes prevention of further harm in the community or to the individual themselves.	Further detail added for clarity
713	Medical Psychotherapy Service	SERVICES providing therapy used to treat emotional problems and mental health conditions	Formerly known as Psychotherapy. Multidisciplinary Mental Health Services to assess, manage and treat children and adults with mental health problems using talking therapies and other psychotherapeutic techniques.	Further detail added for clarity
715	Old Age Psychiatry Service	SERVICES providing the diagnosis, treatment, and prevention of mental and emotional disorders in older adult PATIENTS	Mental Health SERVICES providing the specialised assessment, treatment and continuing care for older adults suffering a range of mental illnesses, including dementia, depression or schizophrenia. Excludes specific Dementia Assessment Services - see TREATMENT FUNCTION CODE 727.	Further detail added for clarity; exclusion added
720	Eating Disorders Service	A specialist SERVICE for the diagnosis and treatment of eating disorders including anorexia, bulimia and compulsive overeating	A specialist SERVICE for the diagnosis and treatment of eating disorders including anorexia, bulimia and compulsive overeating. This is usually a multidisciplinary service which needs to consider both physical and mental health aspects of the PATIENT's care.	Further detail added for clarity

Code	TFC name	Previous TFC description	New TFC description	Details of change
721	Addiction Service	The prevention and treatment of substance misuse including drugs and alcohol. If PATIENTS have both severe mental illness and problematic substance misuse, see TREATMENT FUNCTION CODE 726 Dual Diagnosis Service	Mental Health SERVICES for the treatment of addictive behaviour, including substance misuse, drugs, alcohol, tobacco and gambling. Excludes PATIENTS with both severe mental illness and problematic substance misuse, see Mental Health Dual Diagnosis Service - TREATMENT FUNCTION CODE 726.	Reworded for clarity
723	Psychiatric Intensive Care Service	The provision of psychiatric SERVICES to vulnerable individuals who are admitted to Psychiatric Intensive Care Units from open acute wards and forensic settings	Mental Health SERVICES provided to vulnerable individuals with severe disturbances who are admitted to Psychiatric Intensive Care Units from mental health acute wards and forensic settings.	Reworded for clarity
724	Perinatal Mental Health Service	A specialist psychiatric SERVICE for the diagnosis and treatment of ante-natal and post-natal psychiatric problems	Formerly known as Perinatal Psychiatry. Specialist Mental Health SERVICES for the assessment, management and treatment of pre-existing or new mental health issues during pregnancy or after delivery.	Further detail added for clarity
726	Mental Health Dual Diagnosis Service	SERVICES to provide support to PATIENTS with both severe mental illness and substance misuse problems. Personality disorder may coexist with psychiatric illness and/or substance misuse	Mental Health SERVICES to provide support to PATIENTS with both severe mental illness and substance misuse problems.	Superfluous wording removed
727	Dementia Assessment Service	SERVICES for the assessment of PATIENTS with dementia, which may complicate care giving and can occur at any stage of the illness. In addition to memory impairment, dementia may include behavioural and psychological problems	Designated Mental Health SERVICES for the assessment of PATIENTS who have or are suspected to have dementia. Dementia complicates care giving and can occur at any stage of the illness and at any age. In addition to memory impairment, dementia may include behavioural and psychological problems. For	Further detail added for clarity; exclusion added

Code	TFC name	Previous TFC description	New TFC description	Details of change
			non-specific Old Age Psychiatry Services, see TREATMENT FUNCTION CODE 715	
800	Clinical Oncology Service	The diagnosis and treatment, typically with Radiotherapy, of PATIENTS with cancer.	Formerly known as Radiotherapy. SERVICES for the diagnosis and treatment, typically with radiotherapy, of PATIENTS with cancer.	Wording updated to reference previous TFC name
811	Interventional Radiology Service	Diagnosis and treatment of diseases utilising minimally-invasive image-guided procedures. Not to be used for Diagnostic Imaging - see TREATMENT FUNCTION CODE 812	SERVICES delivering a range of techniques using radiological image guidance including X-ray fluoroscopy, ultrasound, computed tomography (CT) scan, or magnetic resonance imaging (MRI) to precisely target therapy. Excludes Interventional Cardiology - see CARDIOLOGY SERVICE TREATMENT FUNCTION CODE 320, and Diagnostic Imaging Service - see TREATMENT FUNCTION CODE 812	Further detail added for clarity; exclusion added
812	Diagnostic Imaging Service	The production and interpretation of high quality images of the body to diagnose injuries and disease, e.g. x-rays, Ultrasound Scan, MRI Scan, PET Scan or CT Scan.	SERVICES providing medical imaging, especially X-ray based examinations, Ultrasound Scan, MRI Scan, PET Scan or CT Scan. Diagnostic imaging is used to confirm, assess and document diseases, as well as to assess responses to treatment.	Further detail added for clarity
822	Chemical Pathology Service	To be used for clinical management only	SERVICES interpreting biochemical investigation results to assess, diagnose and treat diseases. To be used for the clinical management of PATIENTS by chemical pathology only	Further detail added for clarity

<b>Code</b>	<b>TFC name</b>	<b>Previous TFC description</b>	<b>New TFC description</b>	<b>Details of change</b>
834	Medical Virology Service	The diagnosis and management and prevention of virus and related infections, in hospital and in the community including HIV/AIDS, other blood-borne infections like hepatitis B and C and viruses such as SARS and avian flu	Clinical SERVICES for the diagnosis, management and prevention of blood-borne and/or airborne viral infections.	Superfluous wording removed
840	Audiology Service	Physiological measurement and diagnosis of hearing disorders, and the rehabilitation of PATIENTS with hearing loss	SERVICES providing physiological measurement and diagnosis of hearing disorders, and the rehabilitation of PATIENTS with hearing loss. Include hearing services activity, such as hearing tests and the fitting of hearing aids.	Further detail added for clarity