

NHS Data Model and Dictionary



Type: Change Request
Reference: 1650
Version No: 1.0
Subject: National Workforce Data Set v3.0
Effective Date: 1 January 2019
Reason for Change: Change to Information Standards
Publication Date: 2 October 2018

Background:

The National Workforce Data Set Version 2.9 was approved by the Data Coordination Board (DCB) as [DCB1067 Amd 26/2017](#).

A number of changes to the National Workforce Data Set are required to ensure that the data set remains fit for purpose, continues to reflect current workforce policy and practice, and supports the NHS in relation to workforce.

The changes include amendments to existing data value lists in the National Workforce Data Set. These changes have been approved by the Workforce Information Review Group (WIRG) and where appropriate have also been approved by the Electronic Staff Record Special Interest Group.

This Change Request updates the data set and supporting definitions within the NHS Data Model and Dictionary to support the Information Standard as follows:

- Area of Work Name updates
- Job Role Code updates
- Enable the recording of Person Stated Sexual Orientation
- Retire the Attributes and Data Elements that are no longer included in the data set.

To view a demonstration on "How to Read an NHS Data Model and Dictionary Change Request", visit the NHS Data Model and Dictionary help pages at: http://www.datadictionary.nhs.uk/Flash_Files/changerequest.htm.

Note: if the web page does not open, please copy the link and paste into the web browser.

Summary of changes:

Diagrams

[NATIONAL WORKFORCE DIAGRAM](#)

Changed Diagram

Data Set

[NATIONAL WORKFORCE DATA SET](#)

Changed Description

Supporting Information

[REGULATORY BODIES MENU](#)

Changed Description

[SOCIAL CARE WALES](#)

New Supporting Information

Class Definitions

[EMPLOYEE](#)

Changed Attributes

EMPLOYEE PLAN	Changed Attributes
EMPLOYEE TRAINING ACTIVITY	Changed Attributes
EMPLOYMENT	Changed Attributes
EMPLOYMENT CONTRACT	Changed Attributes
ORGANISATION	Changed Attributes
PAYSCALE	Changed Attributes
POSITION	Changed Attributes
POSITION VACANCY	Changed Attributes
QUALIFICATION	Changed Attributes

Attribute Definitions

AREA OF WORK NAME	Changed Description
ASSIGNMENT START DATE (RETIRED) renamed from ASSIGNMENT START DATE	Changed status to Retired, Name, Description
ASSIGNMENT STATUS renamed from ASSIGNMENT STATUS CODE	Changed Name
ASSIGNMENT TYPE renamed from ASSIGNMENT TYPE CODE	Changed Name, Description
CARE GROUP CODE	Changed Description
EMPLOYEE ABSENCE CATEGORY renamed from EMPLOYEE ABSENCE CATEGORY CODE	Changed Name, Description
EMPLOYEE ABSENCE SICKNESS REASON renamed from EMPLOYEE ABSENCE SICKNESS REASON CODE	Changed Name
EMPLOYEE ABSENCE TYPE renamed from EMPLOYEE ABSENCE TYPE CODE	Changed Name, Description
EMPLOYEE ABSENCE WORKING HOURS LOST (RETIRED) renamed from EMPLOYEE ABSENCE WORKING HOURS LOST	Changed status to Retired, Name, Description
EMPLOYEE DISABILITY STATUS renamed from EMPLOYEE DISABILITY STATUS CODE	Changed Name, Description
EMPLOYEE HIGHER EDUCATION STATISTICS AGENCY STUDENT NUMBER	Changed Description
EMPLOYEE NATIONAL TRAINING NUMBER	Changed Description
EMPLOYEE PLAN TYPE renamed from EMPLOYEE PLAN TYPE CODE	Changed Name
EMPLOYEE RESIDENCY STATUS	Changed Description
EMPLOYEE SUPERVISOR START DATE (RETIRED) renamed from EMPLOYEE SUPERVISOR START DATE	Changed status to Retired, Name, Description
EMPLOYEE SUPERVISOR TYPE CODE (RETIRED) renamed from EMPLOYEE SUPERVISOR TYPE CODE	Changed status to Retired, Name, Description
EMPLOYMENT CONTRACT NATURE renamed from EMPLOYMENT CONTRACT NATURE CODE	Changed Name
EMPLOYMENT CONTRACT SESSION TYPE renamed from EMPLOYMENT CONTRACT SESSION TYPE CODE	Changed Name, Description
EMPLOYMENT CONTRACT TYPE renamed from EMPLOYMENT CONTRACT TYPE CODE	Changed Name
EMPLOYMENT HISTORY LEAVING DESTINATION renamed from EMPLOYMENT HISTORY LEAVING DESTINATION CODE	Changed Name
EMPLOYMENT HISTORY LEAVING REASON renamed from EMPLOYMENT HISTORY LEAVING REASON CODE	Changed Name
EMPLOYMENT HISTORY RECORDED DATE (RETIRED) renamed from EMPLOYMENT HISTORY RECORDED DATE	Changed status to Retired, Name, Description
EMPLOYMENT HISTORY RECORDED TIME (RETIRED) renamed from EMPLOYMENT HISTORY RECORDED TIME	Changed status to Retired, Name, Description
EMPLOYMENT HISTORY RECRUITMENT SOURCE renamed from EMPLOYMENT HISTORY RECRUITMENT SOURCE CODE	Changed Name
	Changed Name, Description

FLEXIBLE WORKING PATTERN TYPE renamed from FLEXIBLE WORK PATTERN TYPE CODE	
JOB ROLE CODE	Changed Description
ORGANISATION TYPE FOR WORKFORCE (RETIRED) renamed from ORGANISATION TYPE FOR WORKFORCE	Changed status to Retired, Name, Description
PAYSCALE CODE	Changed Description
PAYSCALE SPINE POINT renamed from PAYSCALE SPINE POINT CODE	Changed Name
POSITION ROTA PATTERN TYPE renamed from POSITION ROTA PATTERN CODE	Changed Name, Description
POSITION SHIFT TYPE renamed from POSITION SHIFT TYPE CODE	Changed Name
POSITION STATUS renamed from POSITION STATUS CODE	Changed Name
POSITION VACANCY STATUS renamed from POSITION VACANCY STATUS CODE	Changed Name, Description
PROFESSIONAL REGISTRATION BODY CODE	Changed Description
PROFESSIONAL REGISTRATION TYPE	Changed Description
QUALIFICATION SUBJECT AREA renamed from QUALIFICATION SUBJECT AREA CODE	Changed Name, Description
QUALIFICATION TYPE renamed from QUALIFICATION TYPE CODE	Changed Name
STAFF GROUP renamed from STAFF GROUP CODE	Changed Name
TRAINING ACTIVITY ACCREDITATION CREDIT AMOUNT	Changed Description
TRAINING ACTIVITY ASSESSOR TYPE renamed from TRAINING ACTIVITY ASSESSOR TYPE CODE	Changed Name
TRAINING ACTIVITY DELIVERY METHOD renamed from TRAINING ACTIVITY DELIVERY METHOD TYPE CODE	Changed Name, Description
TRAINING ACTIVITY START DATE	Changed Description
TRAINING ACTIVITY TYPE renamed from TRAINING ACTIVITY TYPE CODE	Changed Name, Description

Data Elements

ASSIGNMENT STATUS renamed from ASSIGNMENT STATUS CODE	Changed linked Attribute, Name
ASSIGNMENT TYPE renamed from ASSIGNMENT TYPE CODE	Changed linked Attribute, Name
EMPLOYEE ABSENCE CATEGORY renamed from EMPLOYEE ABSENCE CATEGORY CODE	Changed linked Attribute, Name
EMPLOYEE ABSENCE SICKNESS REASON renamed from EMPLOYEE ABSENCE SICKNESS REASON CODE	Changed linked Attribute, Name
EMPLOYEE ABSENCE TYPE renamed from EMPLOYEE ABSENCE TYPE CODE	Changed linked Attribute, Name
EMPLOYEE ABSENCE WORKING HOURS LOST (REPORTING PERIOD)	Changed Description
EMPLOYEE DISABILITY STATUS renamed from EMPLOYEE DISABILITY STATUS CODE	Changed linked Attribute, Name
EMPLOYEE LENGTH OF TIME IN POSITION	Changed Description
EMPLOYMENT CONTRACT SESSION TYPE renamed from EMPLOYMENT CONTRACT SESSION TYPE CODE	Changed linked Attribute, Name
EMPLOYMENT CONTRACT TYPE renamed from EMPLOYMENT CONTRACT TYPE CODE	Changed linked Attribute, Name
EMPLOYMENT HISTORY LEAVING DESTINATION renamed from EMPLOYMENT HISTORY LEAVING DESTINATION CODE	Changed Name
EMPLOYMENT HISTORY LEAVING REASON renamed from EMPLOYMENT HISTORY LEAVING REASON CODE	Changed Name
EMPLOYMENT HISTORY RECRUITMENT SOURCE renamed from EMPLOYMENT HISTORY RECRUITMENT SOURCE CODE	Changed linked Attribute, Name

FLEXIBLE WORKING PATTERN TYPE renamed from FLEXIBLE WORKING PATTERN TYPE CODE	Changed linked Attribute, Name
FTE STABILITY RATE (ORGANISATION IN REPORTING PERIOD)	Changed Description
FTE STABILITY RATE (STAFF GROUP IN REPORTING PERIOD)	Changed Description
HEADCOUNT (ORGANISATION CURRENT)	Changed Description
HEADCOUNT STABILITY RATE (ORGANISATION IN REPORTING PERIOD)	Changed Description
HEADCOUNT TURNOVER RATE (FTE IN REPORTING PERIOD)	Changed Description
HEADCOUNT TURNOVER RATE (ORGANISATION IN REPORTING PERIOD)	Changed Description
ORGANISATION TYPE (EMPLOYER) (RETIRED) renamed from ORGANISATION TYPE (EMPLOYER)	Changed linked Attribute, status to Retired, Name, Description
PAYSCALE CODE	Changed Description
PAYSCALE SPINE POINT renamed from PAYSCALE SPINE POINT CODE	Changed linked Attribute, Name, Description
POSITION ROTA PATTERN TYPE renamed from POSITION ROTA PATTERN CODE	Changed linked Attribute, Name
POSITION SHIFT TYPE renamed from POSITION SHIFT TYPE CODE	Changed linked Attribute, Name
POSITION STATUS renamed from POSITION STATUS CODE	Changed linked Attribute, Name
POSITION VACANCY STATUS renamed from POSITION VACANCY STATUS CODE	Changed linked Attribute, Name
PROFESSIONAL REGISTRATION TYPE renamed from PROFESSIONAL REGISTRATION TYPE CODE	Changed linked Attribute, Name
PROFESSIONAL REGISTRATION TYPE (POSITION) renamed from PROFESSIONAL REGISTRATION TYPE CODE (POSITION)	Changed Name
QUALIFICATION PLANNED COMPLETION DATE CHANGE REASON (CCT)	Changed Description
QUALIFICATION SUBJECT AREA renamed from QUALIFICATION SUBJECT AREA CODE	Changed linked Attribute, Name
QUALIFICATION TYPE renamed from QUALIFICATION TYPE CODE	Changed linked Attribute, Name
TRAINING ACTIVITY ASSESSOR TYPE renamed from TRAINING ACTIVITY ASSESSOR TYPE CODE	Changed linked Attribute, Name
TRAINING ACTIVITY DELIVERY METHOD renamed from TRAINING ACTIVITY DELIVERY METHOD TYPE CODE	Changed linked Attribute, Name
TRAINING ACTIVITY TYPE renamed from TRAINING ACTIVITY TYPE CODE	Changed linked Attribute, Name

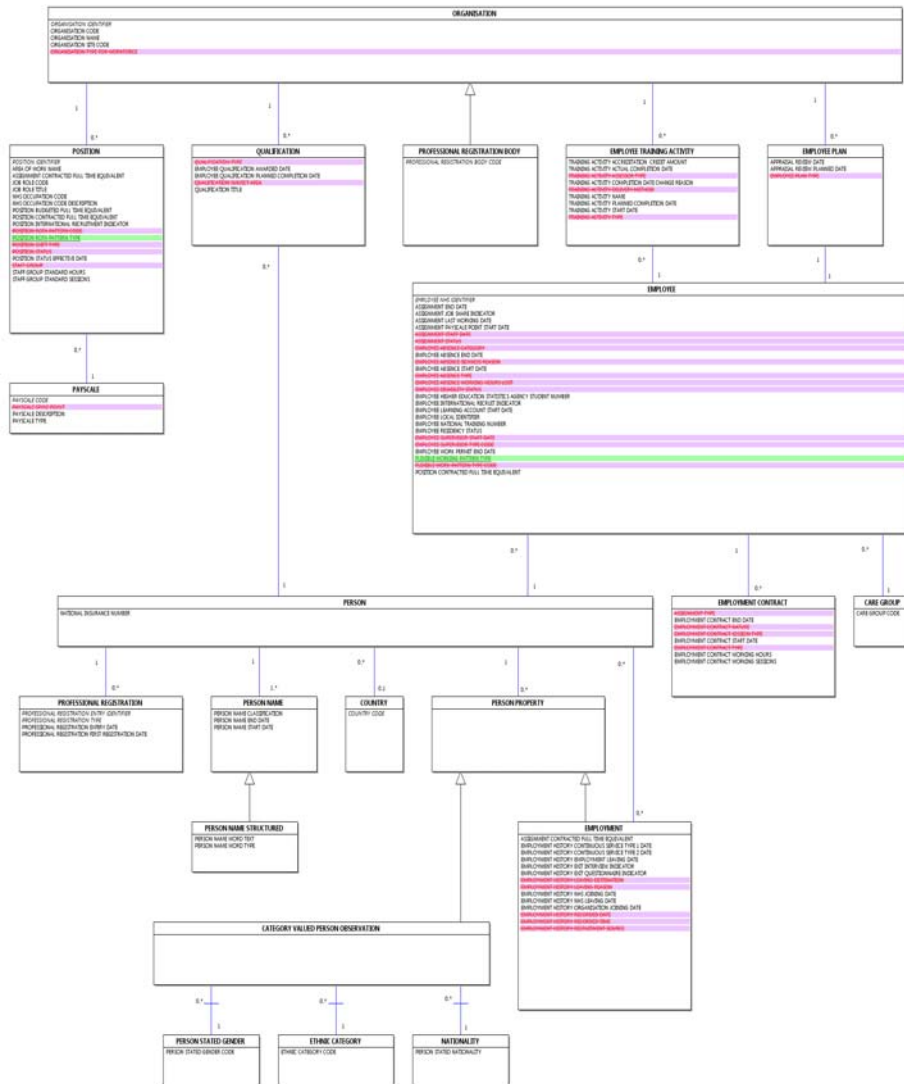
Date: 2 October 2018

Sponsor: Stephen Balchin, Head of Workforce Information and Analysis, Department for Health and Social Care

Note: New text is shown with a blue background. Deleted text is crossed out. Retired text is shown in grey. Within the Diagrams deleted classes and relationships are red, changed items are blue and new items are green.

NATIONAL WORKFORCE DIAGRAM

Change to Diagram: Changed Diagram



NATIONAL WORKFORCE DATA SET

Change to Data Set: Changed Description

[National Workforce Data Set Overview](#)

For a "Full Screen" view, click [National Workforce Data Set](#).

In the "Full Screen" view, to return to the "Data Set" view, click the browser "back" button.

ORGANISATIONAL DETAILS	
Organisational	Data Set Data Elements
	POSITION IDENTIFIER
	ORGANISATION IDENTIFIER (EMPLOYER)
	ORGANISATION NAME (EMPLOYER)
	ORGANISATION TYPE (EMPLOYER)

ORGANISATION IDENTIFIER (POSITION NON-NHS FUNDER)
ORGANISATION SITE IDENTIFIER (EMPLOYING ORGANISATION)
ORGANISATION SITE NAME (EMPLOYING ORGANISATION)

PERSONAL/OPERATIONAL DETAILS

Personal/Operational
Data Set Data Elements
EMPLOYEE NHS IDENTIFIER
PERSON AGE IN YEARS (REPORTING PERIOD END DATE)
PERSON BIRTH DATE
EMPLOYEE DISABILITY STATUS CODE
EMPLOYEE DISABILITY STATUS
ETHNIC CATEGORY
PERSON GIVEN NAME (FIRST)
PERSON GIVEN NAME (SECOND)
PERSON GIVEN NAME (THIRD)
PERSON STATED GENDER CODE
PERSON STATED SEXUAL ORIENTATION CODE
PERSON INITIALS
EMPLOYEE LOCAL IDENTIFIER
NATIONAL INSURANCE NUMBER
PERSON STATED NATIONALITY
EMPLOYEE RESIDENCY STATUS
PERSON FAMILY NAME
EMPLOYEE WORK PERMIT END DATE

DEPLOYMENT DETAILS

Deployment
Data Set Data Elements
AREA OF WORK NAME
FLEXIBLE WORKING PATTERN TYPE CODE
FLEXIBLE WORKING PATTERN TYPE
JOB ROLE TITLE (POSITION)
POSITION ROTA PATTERN CODE
POSITION SHIFT TYPE CODE
POSITION ROTA PATTERN TYPE
POSITION SHIFT TYPE
CARE GROUP CODE (POSITION)
CARE GROUP CODE (EMPLOYEE ASSIGNMENT)
OCCUPATION CODE (CLINICAL SECOND SPECIALTY)
OCCUPATION CODE (CLINICAL SPECIALTY)
AREA OF WORK NAME (CLINICAL SUB SPECIALTY)
PAYSCALE SPINE POINT CODE
PAYSCALE SPINE POINT
OCCUPATION CODE
OCCUPATION CODE DESCRIPTION

Payscale Code (Employee Assignment Latest)
Payscale Code
Payscale Description
Payscale Type

EDUCATION DETAILS

Education
Data Set Data Elements
Training Activity Type Code
Training Activity Type
Staff Group Code (Training Activity Classification)
Training Activity Delivery Method Type Code
Qualification Subject Area Code
Training Activity Delivery Method
Qualification Subject Area
Training Activity Accreditation Credit Amount
Training Activity Actual Completion Date (Specialist Training)
Training Activity Actual Completion Date (GP Training)
Employee Learning Account Start Date
Professional Registration First Registration Date
Employee Qualification Awarded Date
Employee HESA Student Number
Appraisal Review Planned Date (Consultant Job Plan Next)
Professional Registration Type Code (Position)
Professional Registration Type (Position)
Employee National Training Number
Person Full Name (Clinical Supervisor Latest)
Person Full Name (Educational Supervisor Latest)
Training Activity Name
Appraisal Review Planned Date (Next)
Appraisal Review Planned Date (PDP Next)
Appraisal Review Date
Professional Registration Body Code
Professional Registration Expiry Date
Professional Registration Entry Identifier
Professional Registration Status
Employee Qualification Planned Completion Date (Specialist Training)
Employee Qualification Planned Completion Date (GP Training)
Qualification Title
Qualification Type Code
Qualification Type
Qualification Planned Completion Date Change Reason (CCT)
Professional Registration Type Code
Professional Registration Type
Training Activity Start Date (Specialist Training)
Training Activity Start Date (GP Training)

[TRAINING ACTIVITY ASSESSOR TYPE CODE](#)

[TRAINING ACTIVITY ASSESSOR TYPE](#)

ABSENCE DETAILS

Absence

Data Set Data Elements

[EMPLOYEE ABSENCE CATEGORY CODE](#)

[EMPLOYEE ABSENCE CATEGORY](#)

[EMPLOYEE ABSENCE DURATION](#)

[EMPLOYEE ABSENCE END DATE](#)

[EMPLOYEE ABSENCE RATE \(REPORTING PERIOD\)](#)

[EMPLOYEE ABSENCE START DATE](#)

[EMPLOYEE ABSENCE TYPE CODE](#)

[EMPLOYEE ABSENCE TYPE](#)

[EMPLOYEE ABSENCE OCCURRENCE TOTAL \(REPORTING PERIOD\)](#)

[EMPLOYEE ABSENCE SICKNESS REASON CODE](#)

[EMPLOYEE ABSENCE SICKNESS REASON](#)

[EMPLOYEE ABSENCE WORKING HOURS LOST \(REPORTING PERIOD\)](#)

STAFF MOVEMENTS AND NUMBERS DETAILS

Staff Movements and Numbers

Data Set Data Elements

[EMPLOYMENT HISTORY EMPLOYMENT LEAVING DATE](#)

[ASSIGNMENT STATUS CODE](#)

[ASSIGNMENT STATUS](#)

[POSITION BUDGETED FTE](#)

[EMPLOYMENT CONTRACT NATURE CODE](#)

[EMPLOYMENT HISTORY CONTINUOUS SERVICE TYPE 1 DATE](#)

[EMPLOYMENT HISTORY CONTINUOUS SERVICE TYPE 2 DATE](#)

[EMPLOYMENT CONTRACT WORKING HOURS](#)

[EMPLOYMENT CONTRACT WORKING SESSIONS](#)

[ASSIGNMENT CONTRACTED FTE](#)

[POSITION CONTRACTED FTE](#)

[EMPLOYMENT HISTORY NHS LEAVING DATE \(LATEST\)](#)

[EMPLOYMENT HISTORY NHS JOINING DATE \(LATEST\)](#)

[EMPLOYMENT CONTRACT START DATE](#)

[EMPLOYMENT HISTORY LEAVING DESTINATION CODE](#)

[EMPLOYMENT HISTORY LEAVING DESTINATION](#)

[EMPLOYMENT HISTORY EXIT INTERVIEW INDICATOR](#)

[EMPLOYMENT HISTORY EXIT QUESTIONNAIRE INDICATOR](#)

[EMPLOYMENT CONTRACT END DATE](#)

[HEADCOUNT \(ORGANISATION CURRENT\)](#)

[HEADCOUNT \(POSITION ASSIGNMENT CURRENT\)](#)

[EMPLOYEE INTERNATIONAL RECRUIT INDICATOR](#)

[ASSIGNMENT JOB SHARE INDICATOR](#)

[EMPLOYMENT HISTORY ORGANISATION JOINING DATE](#)

ASSIGNMENT LAST WORKING DATE
EMPLOYEE ORGANISATION LENGTH OF SERVICE
EMPLOYEE NHS LENGTH OF SERVICE
POSITION VACANCY LENGTH OF TIME UNFILLED
POSITION INTERNATIONAL RECRUITMENT INDICATOR
POSITION STATUS CODE
POSITION STATUS
POSTCODE
ASSIGNMENT END DATE
EMPLOYMENT HISTORY LEAVING REASON CODE
EMPLOYMENT HISTORY RECRUITMENT SOURCE CODE
EMPLOYMENT HISTORY LEAVING REASON
EMPLOYMENT HISTORY RECRUITMENT SOURCE
HEADCOUNT STABILITY RATE (JOB ROLE IN REPORTING PERIOD)
HEADCOUNT STABILITY RATE (ORGANISATION IN REPORTING PERIOD)
HEADCOUNT STABILITY RATE (STAFF GROUP IN REPORTING PERIOD)
FTE STABILITY RATE (JOB ROLE IN REPORTING PERIOD)
FTE STABILITY RATE (ORGANISATION IN REPORTING PERIOD)
FTE STABILITY RATE (STAFF GROUP IN REPORTING PERIOD)
STAFF GROUP STANDARD HOURS
STAFF GROUP STANDARD SESSIONS
START DATE (ASSIGNMENT PAYSCALE)
EMPLOYMENT HISTORY NHS JOINING DATE (FIRST)
EMPLOYEE LENGTH OF TIME IN POSITION
HEADCOUNT TURNOVER RATE (ORGANISATION IN REPORTING PERIOD)
HEADCOUNT TURNOVER RATE (FTE IN REPORTING PERIOD)
ASSIGNMENT TYPE CODE
EMPLOYMENT CONTRACT TYPE CODE
EMPLOYMENT CONTRACT SESSION TYPE CODE
ASSIGNMENT TYPE
EMPLOYMENT CONTRACT TYPE
EMPLOYMENT CONTRACT SESSION TYPE
POSITION VACANCY END DATE
POSITION VACANCY START DATE
POSITION VACANCY STATUS CODE
POSITION VACANCY STATUS
POSITION VACANCY FTE
POSITION VACANCY IDENTIFIER
POSITION WORKED FTE (REPORTING PERIOD)
POSITION FTE VARIANCE

NATIONAL WORKFORCE DATA SET

Change to Data Set: Changed Description

- Changed Description

REGULATORY BODIES MENU

Change to Supporting Information: Changed Description

- [NHS Business Definitions](#)
- [Organisations](#)
- [Referenced Organisations](#)
- **Regulatory Bodies:**
 - [General Chiropractic Council](#)
 - [General Dental Council](#)
 - [General Medical Council](#)
 - [General Optical Council](#)
 - [General Osteopathic Council](#)
 - [General Pharmaceutical Council](#)
 - [Health and Care Professions Council](#)
 - [Nursing and Midwifery Council](#)
 - [Ophthalmic Qualifications Committee](#)
- **Regulatory Bodies:**
 - [General Chiropractic Council](#)
 - [General Dental Council](#)
 - [General Medical Council](#)
 - [General Optical Council](#)
 - [General Osteopathic Council](#)
 - [General Pharmaceutical Council](#)
 - [Health and Care Professions Council](#)
 - [Nursing and Midwifery Council](#)
 - [Ophthalmic Qualifications Committee](#)
 - [Social Care Wales](#)

SOCIAL CARE WALES

Change to Supporting Information: New Supporting Information

[Social Care Wales](#) is a [Regulatory Body](#) in [Wales](#).

[Social Care Wales](#) is a statutory body with regulatory powers in [Wales](#), established by the [National Assembly for Wales](#) through the [Regulation and Inspection of Social Care \(Wales\) Act 2016](#).

[Social Care Wales's](#) main objective is to protect, promote and maintain the safety and well-being of the public in [Wales](#).

[Social Care Wales's](#) role is in promoting and maintaining:

- high standards in the provision of care and support services,
- high standards of conduct and practice among [Social Care Workers](#),
- high standards in the training of [Social Care Workers](#), and
- public confidence in [Social Care Workers](#).

For further information on [Social Care Wales](#), see the [Social Care Wales](#) website at: [About](#).

This supporting information is also known by these names:

Context	Alias
formerly	Care Council for Wales
plural	Social Care Wales

EMPLOYEE

Change to Class: Changed Attributes

Attributes of this Class are:

K EMPLOYEE NHS IDENTIFIER
 ASSIGNMENT END DATE
 ASSIGNMENT JOB SHARE INDICATOR
 ASSIGNMENT LAST WORKING DATE
 ASSIGNMENT Payscale POINT START DATE
 ASSIGNMENT START DATE
 ASSIGNMENT STATUS
 ASSIGNMENT STATUS CODE
 EMPLOYEE ABSENCE CATEGORY
 EMPLOYEE ABSENCE CATEGORY CODE
 EMPLOYEE ABSENCE END DATE
 EMPLOYEE ABSENCE SICKNESS REASON CODE
 EMPLOYEE ABSENCE SICKNESS REASON
 EMPLOYEE ABSENCE START DATE
 EMPLOYEE ABSENCE TYPE CODE
 EMPLOYEE ABSENCE TYPE
 EMPLOYEE ABSENCE WORKING HOURS LOST
 EMPLOYEE DISABILITY STATUS
 EMPLOYEE DISABILITY STATUS CODE
 EMPLOYEE HIGHER EDUCATION STATISTICS AGENCY STUDENT NUMBER
 EMPLOYEE INTERNATIONAL RECRUIT INDICATOR
 EMPLOYEE LEARNING ACCOUNT START DATE
 EMPLOYEE LOCAL IDENTIFIER
 EMPLOYEE NATIONAL TRAINING NUMBER
 EMPLOYEE RESIDENCY STATUS
 EMPLOYEE SUPERVISOR START DATE
 EMPLOYEE SUPERVISOR TYPE CODE
 EMPLOYEE WORK PERMIT END DATE
 FLEXIBLE WORK PATTERN TYPE CODE
 FLEXIBLE WORKING PATTERN TYPE
 POSITION CONTRACTED FULL TIME EQUIVALENT

EMPLOYEE PLAN

Change to Class: Changed Attributes

Attributes of this Class are:

 APPRAISAL REVIEW DATE
 APPRAISAL REVIEW PLANNED DATE
 EMPLOYEE PLAN TYPE CODE
 EMPLOYEE PLAN TYPE

EMPLOYEE TRAINING ACTIVITY

Change to Class: Changed Attributes

Attributes of this Class are:

TRAINING ACTIVITY ACCREDITATION CREDIT AMOUNT
TRAINING ACTIVITY ACTUAL COMPLETION DATE
~~TRAINING ACTIVITY ASSESSOR TYPE CODE~~
TRAINING ACTIVITY ASSESSOR TYPE
TRAINING ACTIVITY COMPLETION DATE CHANGE REASON
~~TRAINING ACTIVITY DELIVERY METHOD TYPE CODE~~
TRAINING ACTIVITY DELIVERY METHOD
TRAINING ACTIVITY NAME
TRAINING ACTIVITY PLANNED COMPLETION DATE
TRAINING ACTIVITY START DATE
~~TRAINING ACTIVITY TYPE CODE~~
TRAINING ACTIVITY TYPE

EMPLOYMENT

Change to Class: Changed Attributes

Attributes of this Class are:

ASSIGNMENT CONTRACTED FULL TIME EQUIVALENT
EMPLOYMENT HISTORY CONTINUOUS SERVICE TYPE 1 DATE
EMPLOYMENT HISTORY CONTINUOUS SERVICE TYPE 2 DATE
EMPLOYMENT HISTORY EMPLOYMENT LEAVING DATE
EMPLOYMENT HISTORY EXIT INTERVIEW INDICATOR
EMPLOYMENT HISTORY EXIT QUESTIONNAIRE INDICATOR
~~EMPLOYMENT HISTORY LEAVING DESTINATION CODE~~
EMPLOYMENT HISTORY LEAVING DESTINATION
~~EMPLOYMENT HISTORY LEAVING REASON CODE~~
EMPLOYMENT HISTORY LEAVING REASON
EMPLOYMENT HISTORY NHS JOINING DATE
EMPLOYMENT HISTORY NHS LEAVING DATE
EMPLOYMENT HISTORY ORGANISATION JOINING DATE
~~EMPLOYMENT HISTORY RECORDED DATE~~
~~EMPLOYMENT HISTORY RECORDED TIME~~
~~EMPLOYMENT HISTORY RECRUITMENT SOURCE CODE~~
EMPLOYMENT HISTORY RECRUITMENT SOURCE

EMPLOYMENT CONTRACT

Change to Class: Changed Attributes

Attributes of this Class are:

~~ASSIGNMENT TYPE CODE~~
ASSIGNMENT TYPE
EMPLOYMENT CONTRACT END DATE
~~EMPLOYMENT CONTRACT NATURE CODE~~
EMPLOYMENT CONTRACT NATURE
~~EMPLOYMENT CONTRACT SESSION TYPE CODE~~
EMPLOYMENT CONTRACT SESSION TYPE
EMPLOYMENT CONTRACT START DATE
~~EMPLOYMENT CONTRACT TYPE CODE~~

EMPLOYMENT CONTRACT TYPE
EMPLOYMENT CONTRACT WORKING HOURS
EMPLOYMENT CONTRACT WORKING SESSIONS

ORGANISATION

Change to Class: Changed Attributes

Attributes of this Class are:

K ORGANISATION IDENTIFIER
ACCIDENT AND EMERGENCY DEPARTMENT TYPE
DEPARTMENT CODE
DEPARTMENT TYPE FOR KH12
EMERGENCY CARE DEPARTMENT TYPE
LABORATORY CODE
LABORATORY NAME
NHS CONTINUING HEALTHCARE COMMISSIONED SERVICES INDICATOR
ONS ORGANISATION IDENTIFIER
ORGANISATION CODE
ORGANISATION IDENTIFIER FOR NATIONAL BREAST SCREENING PROGRAMME
ORGANISATION NAME
ORGANISATION SITE CODE
ORGANISATION SITE NAME
~~ORGANISATION TYPE FOR WORKFORCE~~

PAYSCALE

Change to Class: Changed Attributes

Attributes of this Class are:

K PAYSCALE CODE
~~K PAYSCALE SPINE POINT CODE~~
K **PAYSCALE SPINE POINT**
PAYSCALE DESCRIPTION
PAYSCALE TYPE

POSITION

Change to Class: Changed Attributes

Attributes of this Class are:

K POSITION IDENTIFIER
AREA OF WORK NAME
ASSIGNMENT CONTRACTED FULL TIME EQUIVALENT
JOB ROLE CODE
JOB ROLE TITLE
NHS OCCUPATION CODE
NHS OCCUPATION CODE DESCRIPTION
POSITION BUDGETED FULL TIME EQUIVALENT
POSITION CONTRACTED FULL TIME EQUIVALENT
POSITION INTERNATIONAL RECRUITMENT INDICATOR

~~POSITION ROTA PATTERN CODE~~
~~POSITION ROTA PATTERN TYPE~~
~~POSITION SHIFT TYPE CODE~~
~~POSITION SHIFT TYPE~~
~~POSITION STATUS CODE~~
~~POSITION STATUS~~
~~POSITION STATUS EFFECTIVE DATE~~
~~STAFF GROUP CODE~~
~~STAFF GROUP~~
~~STAFF GROUP STANDARD HOURS~~
~~STAFF GROUP STANDARD SESSIONS~~

POSITION VACANCY

Change to Class: Changed Attributes

Attributes of this Class are:

K ~~POSITION VACANCY IDENTIFIER~~
 ~~POSITION VACANCY END DATE~~
 ~~POSITION VACANCY FULL TIME EQUIVALENT~~
 ~~POSITION VACANCY START DATE~~
 ~~POSITION VACANCY STATUS CODE~~
 ~~POSITION VACANCY WTE~~
 ~~POSITION VACANCY STATUS~~

QUALIFICATION

Change to Class: Changed Attributes

Attributes of this Class are:

K ~~QUALIFICATION TYPE CODE~~
K ~~QUALIFICATION TYPE~~
 ~~EMPLOYEE QUALIFICATION AWARDED DATE~~
 ~~EMPLOYEE QUALIFICATION PLANNED COMPLETION DATE~~
 ~~QUALIFICATION ATTAINMENT LEVEL FOR NATIONAL NEONATAL DATA SET~~
 ~~QUALIFICATION SUBJECT AREA CODE~~
 ~~QUALIFICATION SUBJECT AREA~~
 ~~QUALIFICATION TITLE~~

AREA OF WORK NAME

Change to Attribute: Changed Description

The name of an area of work.

An area of work is an area, function or specialty where work activity takes place.

An area of work is categorised into three hierarchical levels. Each Primary value is included in the list of Secondary values, and each Secondary value is included in the list of Tertiary values.

The **Primary** area of work is a high level grouping of clinical specialties e.g. Medicine, Surgery, Psychiatry; or support functions e.g. Estates, Facilities; or other broad grouping e.g. Primary Care, Clinical Support.

The **Secondary** area of work includes each recognised clinical specialty, e.g. Neurology, Ophthalmology; other values identify major areas e.g. Outpatients or functions e.g. Catering, Finance, Pharmacy, where work is undertaken.

The **Tertiary** area of work includes each clinical sub-specialty recognised by the Postgraduate Medical Education and Training Board (PMETB) e.g. Metabolic Medicine; other values identify subsidiary work areas or functions where work is undertaken.

Note that this is essentially [Electronic Staff Record \(ESR\)](#) terminology to facilitate workforce planning, and has no direct connection to Primary Care, Secondary Care, Intermediate Care, etc.

National Codes:

Primary	Secondary	Tertiary
Medicine	Medicine	Medicine
		Vascular Medicine
		Clinical Embryology
	General Medicine	General Medicine
		Acute Medicine
		Acute Internal Medicine
	Paediatrics	Paediatrics
		Paediatric Community Child Health
		Paediatric Endocrinology
		Paediatric Gastroenterology
		Paediatric Infectious Diseases and Immunology
		Paediatric Clinical Pharmacology
		Paediatric Intensive Care Medicine
		Paediatric Nephrology
		Paediatric Neurology
		Paediatric Neonatal Medicine
		Paediatric Oncology
		Paediatric Respiratory Medicine
		Paediatric Rheumatology
		Infectious Diseases
	Respiratory Medicine	Respiratory Medicine

	Respiratory Physiology
	Sleep Physiology
Dermatology	Dermatology
Neurology	Neurology
	Autonomic Science
Cardiology	Cardiology
	Cardiac Physiology
Rheumatology	Rheumatology
Genitourinary Medicine	Genitourinary Medicine
Clinical Pharmacology and Therapeutics	Clinical Pharmacology and Therapeutics
Pharmaceutical Medicine	Pharmaceutical Medicine
Elderly Care Medicine	Elderly Care Medicine
Medical Oncology	Medical Oncology
Clinical Physiology	Clinical Physiology
Clinical Neurophysiology	Clinical Neurophysiology
	Neurophysiology
Renal Medicine	Renal Medicine
	Renal Technology
Endocrinology and Diabetes Mellitus	Endocrinology and Diabetes Mellitus
	Diabetes
Gastroenterology	Gastroenterology
	GI Physiology (Retired 01 December 2012)
	Endoscopy
	Hepatology
Audiovestibular Medicine (Retired 01 October 2017)	Audiovestibular Medicine (Retired 01 October 2017)
	Audiological Measurement (Retired 01 December 2012)
Audio Vestibular Medicine	Audio Vestibular Medicine
Clinical Genetics	Clinical Genetics
Clinical Cytogenetics and Molecular Genetics	Clinical Cytogenetics and Molecular Genetics
	Clinical Cytogenetics
	Molecular Genetics

		Tropical Medicine
	Allergy	Allergy
	Intensive Care Medicine	Intensive Care Medicine
	Rehabilitation	Rehabilitation
		Intermediate Care
		Neurorehabilitation
		Stroke
	Palliative Medicine	Palliative Medicine
	Medical Ophthalmology	Medical Ophthalmology
	Paediatric Cardiology	Paediatric Cardiology
	Clinical Haematology	Clinical Haematology
	Sport and Exercise Medicine	Sport and Exercise Medicine
	Aviation and Space Medicine	Aviation and Space Medicine
Pathology	Pathology	Pathology
		Phlebotomy
		Blood Transfusion
		Pathology External Quality Assurance
		Genetic Counselling
	General Pathology	General Pathology
	Chemical Pathology	Chemical Pathology
		Toxicology
		Metabolic Medicine
	Haematology	Haematology
		Haemostasis and Thrombosis
	Histopathology	Histopathology
		Anatomical Pathology
		Cervical Cytology
		Cytopathology
		Forensic Pathology
		Neuropathology
		Paediatric Pathology
		Electron Microscopy
		Diagnostic Neuropathology
		Paediatric and Perinatal Pathology
Forensic Histopathology		
Medical Microbiology and Virology		

		Medical Microbiology and Virology	
		Medical Microbiology	
		Medical Virology	
	Immunology	Immunology	
	Histocompatibility and Immunogenetics	Histocompatibility and Immunogenetics	
	Blood Sciences	Blood Sciences	
		Clinical Biochemistry	
		Point of Care Testing	
	Infection Sciences	Infection Sciences	
		Decontamination Science	
	Cellular Sciences	Cellular Sciences	
		Reproductive Science	
Clinical Oncology	Clinical Oncology	Clinical Oncology	
		Radiotherapy Physics	
Imaging	Imaging	Imaging	
		Clinical Radiology	Clinical Radiology
		Ultrasound	
		CT	
		MRI	
		Mammography	
	Angiography		
	Breast Screening	Breast Screening	
Nuclear Medicine	Nuclear Medicine		
	Radiopharmacy		
Dental/Oral	Dental/Oral	Dental/Oral	
	Dental/Oral	Dental/Oral	Dental/Oral
		Surgical Dentistry (Retired 01 December 2012)	Surgical Dentistry (Retired 01 December 2012)
		Oral and Maxillofacial Surgery	Oral and Maxillofacial Surgery
		Orthodontics	Orthodontics
		Restorative Dentistry	Restorative Dentistry
		Paediatric Dentistry	Paediatric Dentistry
		Dental Health	Dental Health

		Dental Health (Retired 01 January 2019)	Dental Health (Retired 01 January 2019)
		Oral Surgery	Oral Surgery
		Endodontics	Endodontics
		Periodontics	Periodontics
		Prosthodontics	Prosthodontics
		Oral Hygiene	Oral Hygiene
		Public Health Dentistry	Public Health Dentistry
		Dental Technology	Dental Technology
		Additional Dental Specialties	Additional Dental Specialties (Retired 01 December 2012)
			Oral Medicine
			Oral Microbiology
			Oral and Maxillofacial Pathology
Dental and Maxillofacial Radiology			
Additional Dental Specialties (Retired 01 January 2019)		Additional Dental Specialties (Retired 01 January 2019)	
		Oral Medicine (Retired 01 January 2019)	
		Oral Microbiology (Retired 01 January 2019)	
		Oral and Maxillofacial Pathology (Retired 01 January 2019)	
	Dental and Maxillofacial Radiology (Retired 01 January 2019)		
Special Care Dentistry	Special Care Dentistry		
Oral Medicine	Oral Medicine		
Oral Microbiology	Oral Microbiology		
Oral and Maxillofacial Pathology	Oral and Maxillofacial Pathology		
Dental and Maxillofacial Radiology	Dental and Maxillofacial Radiology		
Surgery	Surgery	Surgery	
	General Surgery	General Surgery	
		Head and Neck Surgery	
		Breast Surgery	
		Vascular Surgery	

	Paediatric Surgery	Paediatric Surgery
	Otolaryngology	Otolaryngology
	Trauma and Orthopaedic Surgery	Trauma and Orthopaedic Surgery
	Ophthalmology	Ophthalmology
		Ophthalmic and Vision Science (Retired 01 December 2012)
	Urology	Urology
	Plastic Surgery	Plastic Surgery
	Cardio-thoracic Surgery	Cardio-thoracic Surgery
		Clinical Perfusion
	Neurosurgery	Neurosurgery
	Anaesthetics	Anaesthetics
	Pain Management	Pain Management
	Intensive Care	Intensive Care
	Stoma Care	Stoma Care
	Wound Management	Wound Management
	Operating Department	Operating Department
		Day Case Unit
	Burns Care	Burns Care
Obstetrics and Gynaecology	Obstetrics and Gynaecology	Obstetrics and Gynaecology
		Community Gynaecology
		Community Sexual and Reproductive Health
		Gynaecological Oncology
		Maternal and Fetal Medicine
		Sexual and Reproductive Medicine
		Urogynaecology
	Obstetrics	Obstetrics
	Gynaecology	Gynaecology
	Maternity	Maternity
	Neonatal Intensive Care	Neonatal Intensive Care
Psychiatry	Psychiatry	Psychiatry
	Psychiatry of Learning Disability	Psychiatry of Learning Disability
	General Psychiatry	General Psychiatry

		Liaison Psychiatry		
		Rehabilitation Psychiatry		
		Substance Misuse Psychiatry		
	Child and Adolescent Psychiatry	Child and Adolescent Psychiatry		
	Forensic Psychiatry	Forensic Psychiatry		
	Medical Psychotherapy	Medical Psychotherapy		
		Child Psychotherapy		
	Child Psychotherapy (Retired 01 January 2019)			
Old Age Psychiatry	Old Age Psychiatry			
Occupational Health	Occupational Health	Occupational Health		
Primary Care	Primary Care	Primary Care	Primary Care	Primary Care
				Marie Curie Nursing
				MacMillan Nursing
				Community Health Services
				Community Health Services
				Community Health Services
				Health Visiting
				District Nursing
				School Nursing
				Sexual and Reproductive Health
Learning Disabilities				
Learning Disabilities (Retired 01 January 2019)				
Community Mental Health				
Family Nurse Partnership				
Social Care				
NHS Direct (Retired 01 January 2016)	NHS Direct (Retired 01 January 2016)			
General Practice	General Practice			
Walk-in Centre	Walk-in Centre			
Public Health Medicine	Public Health Medicine	Public Health Medicine		
		Health Promotion	Health Promotion	

		Teenage Pregnancy		
Public Health	Public Health	Public Health		
	Public Health Sciences	Public Health Sciences		
		Social Sciences		
		Nutritional Sciences		
		Behavioural Sciences		
		Field Epidemiology		
		Environmental Sciences		
		Radiation Sciences		
Clinical Support	Clinical Support	Clinical Support	Clinical Support	Clinical Support
		Clinical Support		Child Protection
		Substance Abuse		
		Substance Abuse (Retired 01 January 2019)		
		Tissue Banking		
		Audiological Science		
		Gastrointestinal Physiology		
		Urodynamics		
	Vascular Science			
	Maxillofacial Prosthetics			
	Outpatients	Outpatients		
	Cancer Support	Cancer Support		
		Radiotherapy		
	Chiropody/Podiatry	Chiropody/Podiatry		
	Dietetics	Dietetics		
	Occupational Therapy	Occupational Therapy		
	Orthoptics/Optics	Orthoptics/Optics		
	Ophthalmic and Vision Science	Ophthalmic and Vision Science		
	Physiotherapy	Physiotherapy		
	Art/Music/Drama Therapy	Art/Music/Drama Therapy		
		Art Therapy		
		Drama Therapy		
		Music Therapy		
Speech and Language Therapy	Speech and Language Therapy			
Ambulance Services	Ambulance Services			
	Ambulance Services	Ambulance Services		

Patient Transport Services
Non-Emergency Control
NHS 111
Integrated Urgent Care
Prosthetics and Orthotics
Social Services
Complementary Medicine/Therapy
Counselling
Clinical Psychology
Clinical Psychology (Retired 01 January 2019)
Clinical Informatics
Chaplaincy
Voluntary Services
Medical Illustration
Medical Physics
Clinical Engineering

	Emergency Services
	Emergency Control
	Prosthetics and Orthotics
	Social Services
	Complementary Medicine/Therapy
	Counselling
	Clinical Psychology
	Clinical Psychology (Retired 01 January 2019)
	Clinical Informatics
	Health Records
	Coding
	Chaplaincy
	Voluntary Services
	Medical Illustration
	Medical Physics
	Clinical Measurement
	Medical Physics Computing
	Radiation Safety
	Diagnostic Radiology Support
	Non-Ionising Radiation
	Diagnostic and Interventional Radiology
	Clinical Pharmaceutical Science
	Clinical Engineering
	Electronics and Biomedical Engineering
	Biomechanical Engineering

			Medical Engineering Design
			Rehabilitation Engineering
			Medical Equipment Manager
			Radiation Engineering
			Reconstructive Science
			Sterile Services
			Pharmacy
Improving Access to Psychological Therapies	Improving Access to Psychological Therapies		
Improving Access to Psychological Therapies (Retired 01 January 2019)	Improving Access to Psychological Therapies (Retired 01 January 2019)		
Cardiac, Vascular, Respiratory and Sleep Sciences	Cardiac, Vascular, Respiratory and Sleep Sciences		
Neurosensory Sciences	Neurosensory Sciences		
Gastrointestinal and Urodynamic Sciences	Gastrointestinal and Urodynamic Sciences		
Clinical Bioinformatics	Clinical Bioinformatics		
	Genomics		
	Health Informatics Science		
General Acute	General Acute	General Acute	
		Private Patients	
		Bank	
		Nights	
	Accident and Emergency	Accident and Emergency	
		Paediatric Accident and Emergency	
Intensive Care	Intensive Care		
	Critical Care		
Estates	Estates	Estates	
	Building Services	Building Services	
	Engineering	Engineering	
	Grounds and Gardens	Grounds and Gardens	
Facilities	Facilities	Facilities	
	Catering	Catering	
		Dining Room	
		Kitchen	
Domestic Services	Domestic Services		

	Portering Services	Portering Services		
	Security	Security		
	Transport	Transport		
	Linen Services	Linen Services		
		Laundry		
		Sewing Room		
	Telephone Services	Telephone Services		
	Health and Safety	Health and Safety		
	Staff Facilities	Staff Facilities		
Corporate	Corporate	Corporate	Corporate	Corporate
		Corporate		Legal
	Communication		Administration	
	Administration		Clinical Governance	
	Clinical Governance		Patient Safety	
			Quality and Patient Care	
			Clinical Audit	
			Health Advocacy	
	Performance Management		Performance Management	
	Service Planning		Service Planning	
	Finance		Finance	
			Audit	
			Financial Services	
			Financial Management	
			Payroll	
	Human Resources		Human Resources	
			Medical Staffing	
			Training	
	Education		Education	
	Research and Development		Research and Development	
	Informatics		Coding	
			Informatics	Coding
				Informatics Education and Training
				Informatics Strategy and Development
				Information Management
				Knowledge Management

			Programmes and Projects
			Information and Communication Technology
Informatics			
Purchasing and Supplies	Purchasing and Supplies		
Mental Health	Mental Health	Mental Health	
		Mental Health Eating Disorders	
		Mental Health Forensic	
		Mental Health Liaison	
		Mental Health Perinatal Care	
		Mental Health Promotion or Public Mental Health	
		Mental Health Substance Misuse	
		Mental Health Child and Adolescent	Mental Health Child and Adolescent
	Learning Disability Other	Learning Disability Other	
		Learning Disability Mental Health	
	Mental Health Adult	Mental Health Adult	
		Mental Health Older People	
	Mental Health Primary Care	Mental Health Primary Care	
		Mental Health Primary Care - IAPT	
	Mental and Physical Health Integrated Care	Mental and Physical Health Integrated Care	

ASSIGNMENT START DATE (RETIRED)_ renamed from ASSIGNMENT START DATE

Change to Attribute: Changed status to Retired, Name, Description

The date on which an assignment of an [EMPLOYEE](#) to a [POSITION](#) starts. **This item has been retired from the NHS Data Model and Dictionary.**

The last live version of this item is available in the ?????? release of the NHS Data Model and Dictionary.

Access to this version can be obtained by emailing information.standards@nhs.net with "NHS Data Model and Dictionary - Archive Request" in the email subject line.

ASSIGNMENT START DATE (RETIRED)_ renamed from ASSIGNMENT START DATE

Change to Attribute: Changed status to Retired, Name, Description

- Retired ASSIGNMENT START DATE
- Changed Name from Data_Dictionary.Attributes.A.Ar.ASSIGNMENT_START_DATE to Retired.Data_Dictionary.Attributes.A.ASSIGNMENT_START_DATE
- Changed Description

ASSIGNMENT STATUS_ renamed from ASSIGNMENT STATUS CODE

Change to Attribute: Changed Name

- Changed Name from Data_Dictionary.Attributes.A.Ar.ASSIGNMENT_STATUS_CODE to Data_Dictionary.Attributes.A.Ar.ASSIGNMENT_STATUS

ASSIGNMENT TYPE_ renamed from ASSIGNMENT TYPE CODE

Change to Attribute: Changed Name, Description

An indication of whether the **EMPLOYEE** has a full time or a part time **EMPLOYMENT CONTRACT** applicable to a **POSITION**. The type of **EMPLOYMENT CONTRACT** applicable to a **POSITION**.

National Codes:

- 01 Full-time
- 02 Part-time

ASSIGNMENT TYPE_ renamed from ASSIGNMENT TYPE CODE

Change to Attribute: Changed Name, Description

- Changed Name from Data_Dictionary.Attributes.A.Ar.ASSIGNMENT_TYPE_CODE to Data_Dictionary.Attributes.A.Ar.ASSIGNMENT_TYPE
- Changed Description

CARE GROUP CODE

Change to Attribute: Changed Description

The type of **CARE GROUP**. The code of the **CARE GROUP**.

National Codes:

- 01 Elective Care
- 02 Emergency Care - Accident and Emergency
- 03 Emergency Care - Critical Care
- 04 Emergency Care - Other Emergency Care
- 05 Cancer
- 06 Mental Health
- 07 Older people services
- 08 Children and maternity - Children
- 09 Children and maternity - Young People
- 10 Children and maternity - Maternity and Gynaecology Devices
- 11 Long term conditions - Diabetes Care

- 12 Long term conditions - Renal Care
- 13 Long term conditions - Other Long Term Conditions
- 14 Coronary Heart Disease

EMPLOYEE ABSENCE CATEGORY_ renamed from EMPLOYEE ABSENCE CATEGORY CODE

Change to Attribute: Changed Name, Description

A high level reason given for an EMPLOYEE absence. A high level category given for an EMPLOYEE absence.

National Codes:

- 01 Adoption
- 02 Paternity Adoption
- 03 Paternity Birth
- 04 Annual Leave
- 05 Maternity
- 06 Sickness
- 07 Special Leave
- 08 Study Leave
- 09 Disability
- 10 Paternity Antenatal Appointment
- 11 Adoption Appointment

EMPLOYEE ABSENCE CATEGORY_ renamed from EMPLOYEE ABSENCE CATEGORY CODE

Change to Attribute: Changed Name, Description

- Changed Name from Data_Dictionary.Attributes.E.Emp.EMPLOYEE_ABSENCE_CATEGORY_CODE to Data_Dictionary.Attributes.E.Emp.EMPLOYEE_ABSENCE_CATEGORY
- Changed Description

EMPLOYEE ABSENCE SICKNESS REASON_ renamed from EMPLOYEE ABSENCE SICKNESS REASON CODE

Change to Attribute: Changed Name

- Changed Name from Data_Dictionary.Attributes.E.Emp.EMPLOYEE_ABSENCE_SICKNESS_REASON_CODE to Data_Dictionary.Attributes.E.Emp.EMPLOYEE_ABSENCE_SICKNESS_REASON

EMPLOYEE ABSENCE TYPE_ renamed from EMPLOYEE ABSENCE TYPE CODE

Change to Attribute: Changed Name, Description

A sub-classification of EMPLOYEE_ABSENCE_CATEGORY_CODE that further defines the reason for the EMPLOYEE absence. A subtype of EMPLOYEE ABSENCE CATEGORY that further defines the reason for the EMPLOYEE absence.

National Codes:

- 01 Adoption
- 02 Paternity Adoption
- 03 Paternity Birth
- 04 Annual Leave Accrual 1

- 05 Annual Leave Accrual 2
- 06 Annual Leave Accrual 3
- 07 Maternity Leave
- 08 Sickness
- 09 Special Leave Decreasing Balance
- 10 Special Leave Increasing Balance
- 11 Unpaid Authorised Special Leave
- 12 Unpaid Unauthorised Special Leave
- 13 Study Leave Decreasing Balance
- 14 Study Leave Increasing Balance
- 15 Disability Leave
- 16 Medical Suspension With Pay
- 17 Unpaid Authorised Special Hours

EMPLOYEE ABSENCE TYPE_ renamed from EMPLOYEE ABSENCE TYPE CODE

Change to Attribute: Changed Name, Description

- Changed Name from Data_Dictionary.Attributes.E.Emp.EMPLOYEE_ABSENCE_TYPE_CODE to Data_Dictionary.Attributes.E.Emp.EMPLOYEE_ABSENCE_TYPE
- Changed Description

EMPLOYEE ABSENCE WORKING HOURS LOST (RETIRED)_ renamed from EMPLOYEE ABSENCE WORKING HOURS LOST

Change to Attribute: Changed status to Retired, Name, Description

~~The number of working hours lost of an [EMPLOYEE](#) absence. It is based upon the [EMPLOYMENT CONTRACT WORKING HOURS](#) for the [POSITION](#) of the [EMPLOYEE](#) in the period of the [EMPLOYEE](#) absence as recorded by the [EMPLOYEE ABSENCE START DATE](#) and [EMPLOYEE ABSENCE END DATE](#). This item has been retired from the NHS Data Model and Dictionary.~~

The last live version of this item is available in the ??????? release of the NHS Data Model and Dictionary.

Access to this version can be obtained by emailing information.standards@nhs.net with "NHS Data Model and Dictionary - Archive Request" in the email subject line.

EMPLOYEE ABSENCE WORKING HOURS LOST (RETIRED)_ renamed from EMPLOYEE ABSENCE WORKING HOURS LOST

Change to Attribute: Changed status to Retired, Name, Description

- Retired EMPLOYEE ABSENCE WORKING HOURS LOST
- Changed Name from Data_Dictionary.Attributes.E.Emp.EMPLOYEE_ABSENCE_WORKING_HOURS_LOST to Retired.Data_Dictionary.Attributes.E.EMPLOYEE_ABSENCE_WORKING_HOURS_LOST
- Changed Description

EMPLOYEE DISABILITY STATUS_ renamed from EMPLOYEE DISABILITY STATUS CODE

Change to Attribute: Changed Name, Description

~~An indication of whether an [EMPLOYEE](#) considers that they are disabled. The disability status of an [EMPLOYEE](#).~~

National Codes:

- 01 ~~Yes—they consider themselves to be disabled~~
- 02 ~~No—they do not consider themselves to be disabled~~
- 01 Yes - **EMPLOYEE** consider themselves to be disabled
- 02 No - **EMPLOYEE** does not consider themselves to be disabled

EMPLOYEE DISABILITY STATUS_ renamed from EMPLOYEE DISABILITY STATUS CODE

Change to Attribute: Changed Name, Description

- Changed Name from Data_Dictionary.Attributes.E.Emp.EMPLOYEE_DISABILITY_STATUS_CODE to Data_Dictionary.Attributes.E.Emp.EMPLOYEE_DISABILITY_STATUS
- Changed Description

EMPLOYEE HIGHER EDUCATION STATISTICS AGENCY STUDENT NUMBER

Change to Attribute: Changed Description

A unique identifier for every student in the Higher Education Statistics Agency (HESA) system.

The number is allocated to a student when they first commence a higher education course of study, and this transfers with them to each Higher Education Institution they subsequently attend.

~~Every NHS **EMPLOYEE** who has attended a course at a higher education institution, whether as an **EMPLOYEE** of the NHS or not, will have a **EMPLOYEE HIGHER EDUCATION STATISTICS AGENCY STUDENT NUMBER**.~~ Every NHS **EMPLOYEE** who has attended a course at a higher education institution, whether as an **EMPLOYEE** of the NHS or not, will have an **EMPLOYEE HIGHER EDUCATION STATISTICS AGENCY STUDENT NUMBER**.

EMPLOYEE NATIONAL TRAINING NUMBER

Change to Attribute: Changed Description

A unique identifier issued by a Postgraduate Dean to an **EMPLOYEE** where the **EMPLOYEE** has formally accepted, or commenced, a **EMPLOYEE TRAINING ACTIVITY** as a Specialist Registrar.

This is also known as the Medical and Dental National Training Number, or the NTN/VTN/FTN Number.

- NTN = National Training Number
- VTN = Visiting Training Number (until 31/03/04)
- FTN = Fixed Term Training Appointment Training Number.

The standard format for the **EMPLOYEE NATIONAL TRAINING NUMBER** comprises:

- i ~~Three characters to identify the particular Deanery (e.g. "WMD")~~
 - ii ~~Three digits identifying the **MAIN SPECIALTY** applicable to the training programme (e.g. "006")~~
 - iii ~~Three digits to identify the holder of the number (e.g. "324")~~
 - iv ~~a single character suffix to specify the Type of the number (e.g. "N" [NTN], "V" [VTN] or "F" [FTN])~~
- **Three characters to identify the particular Deanery (e.g. "WMD")**
 - **Three digits identifying the **MAIN SPECIALTY** applicable to the training programme (e.g. "006")**
 - **Three digits to identify the holder of the number (i.e. "324")**

- a single character suffix to specify the Type of the number (i.e. "N" [NTN], "V" [VTN] or "F" [FTN])

Note: not all posts have NTN/VTN/FTN status. Only doctors who hold NTN or VTN approved numbers will be able to complete their formal training and be entered onto the Specialist Register, and thus be eligible to gain appointments as a [CONSULTANT](#).

The allocation of NTN, VTN and FTN numbers reflects the numbers of training places nationally, and the allocation of those numbers to each Deanery.

EMPLOYEE PLAN TYPE_ renamed from EMPLOYEE PLAN TYPE CODE

Change to Attribute: Changed Name

- Changed Name from Data_Dictionary.Attributes.E.Emp.EMPLOYEE_PLAN_TYPE_CODE to Data_Dictionary.Attributes.E.Emp.EMPLOYEE_PLAN_TYPE

EMPLOYEE RESIDENCY STATUS

Change to Attribute: Changed Description

An indication of whether an [EMPLOYEE](#) who is not a national of the United Kingdom has the right to stay and work permanently in the United Kingdom. [The residency status of an EMPLOYEE.](#)

National Codes:

- 01 Permanent
- 02 Temporary

EMPLOYEE SUPERVISOR START DATE (RETIRED)_ renamed from EMPLOYEE SUPERVISOR START DATE

Change to Attribute: Changed status to Retired, Name, Description

The date on which a [PERSON](#) commenced supervision as an [Employee Supervisor](#) providing supervision to an [EMPLOYEE](#) who is receiving formal on-going training in the workplace. **This item has been retired from the NHS Data Model and Dictionary.**

The last live version of this item is available in the ??????? release of the NHS Data Model and Dictionary.

Access to this version can be obtained by emailing information.standards@nhs.net with "NHS Data Model and Dictionary - Archive Request" in the email subject line.

EMPLOYEE SUPERVISOR START DATE (RETIRED)_ renamed from EMPLOYEE SUPERVISOR START DATE

Change to Attribute: Changed status to Retired, Name, Description

- Retired EMPLOYEE SUPERVISOR START DATE
- Changed Name from Data_Dictionary.Attributes.E.Emp.EMPLOYEE_SUPERVISOR_START_DATE to Retired.Data_Dictionary.Attributes.E.EMPLOYEE_SUPERVISOR_START_DATE
- Changed Description

EMPLOYEE SUPERVISOR TYPE CODE (RETIRED)_ renamed from EMPLOYEE SUPERVISOR TYPE CODE

Change to Attribute: Changed status to Retired, Name, Description

The type of an Employee Supervisor. This item has been retired from the NHS Data Model and Dictionary.

This is the type of supervision the PERSON is providing to an EMPLOYEE who is receiving formal on-going training in the workplace. The last live version of this item is available in the ?????? release of the NHS Data Model and Dictionary.

National Codes: Access to this version can be obtained by emailing information.standards@nhs.net with "NHS Data Model and Dictionary - Archive Request" in the email subject line.

- 01 Clinical Supervisor – the named Clinical Supervisor has ultimate clinical responsibility for PATIENTS who may be diagnosed or treated by the EMPLOYEE under supervision
- 02 Educational Supervisor – the named Educational Supervisor having educational responsibility for the EMPLOYEE in a training placement. This may or may not be the same PERSON fulfilling the Clinical Supervisor role

EMPLOYEE SUPERVISOR TYPE CODE (RETIRED), renamed from EMPLOYEE SUPERVISOR TYPE CODE

Change to Attribute: Changed status to Retired, Name, Description

- Retired EMPLOYEE SUPERVISOR TYPE CODE
- Changed Name from Data_Dictionary.Attributes.E.Emp.EMPLOYEE_SUPERVISOR_TYPE_CODE to Retired.Data_Dictionary.Attributes.E.EMPLOYEE_SUPERVISOR_TYPE_CODE
- Changed Description

EMPLOYMENT CONTRACT NATURE, renamed from EMPLOYMENT CONTRACT NATURE CODE

Change to Attribute: Changed Name

- Changed Name from Data_Dictionary.Attributes.E.Emp.EMPLOYMENT_CONTRACT_NATURE_CODE to Data_Dictionary.Attributes.E.Emp.EMPLOYMENT_CONTRACT_NATURE

EMPLOYMENT CONTRACT SESSION TYPE, renamed from EMPLOYMENT CONTRACT SESSION TYPE CODE

Change to Attribute: Changed Name, Description

The type of working session specified in an EMPLOYMENT CONTRACT. The type of session specified in an EMPLOYMENT CONTRACT.

This only applies where EMPLOYMENT CONTRACT WORKING SESSIONS are used to express the working week.

National Codes:

- 01 Fixed session
- 02 Theatre session

EMPLOYMENT CONTRACT SESSION TYPE, renamed from EMPLOYMENT CONTRACT SESSION TYPE CODE

Change to Attribute: Changed Name, Description

- Changed Name from Data_Dictionary.Attributes.E.Emp.EMPLOYMENT_CONTRACT_SESSION_TYPE_CODE to Data_Dictionary.Attributes.E.Emp.EMPLOYMENT_CONTRACT_SESSION_TYPE

- Changed Description

EMPLOYMENT CONTRACT TYPE_ renamed from EMPLOYMENT CONTRACT TYPE CODE

Change to Attribute: Changed Name

- Changed Name from Data_Dictionary.Attributes.E.Emp.EMPLOYMENT_CONTRACT_TYPE_CODE to Data_Dictionary.Attributes.E.Emp.EMPLOYMENT_CONTRACT_TYPE

EMPLOYMENT HISTORY LEAVING DESTINATION_ renamed from EMPLOYMENT HISTORY LEAVING DESTINATION CODE

Change to Attribute: Changed Name

- Changed Name from Data_Dictionary.Attributes.E.Emp.EMPLOYMENT_HISTORY_LEAVING_DESTINATION_CODE to Data_Dictionary.Attributes.E.Emp.EMPLOYMENT_HISTORY_LEAVING_DESTINATION

EMPLOYMENT HISTORY LEAVING REASON_ renamed from EMPLOYMENT HISTORY LEAVING REASON CODE

Change to Attribute: Changed Name

- Changed Name from Data_Dictionary.Attributes.E.Emp.EMPLOYMENT_HISTORY_LEAVING_REASON_CODE to Data_Dictionary.Attributes.E.Emp.EMPLOYMENT_HISTORY_LEAVING_REASON

EMPLOYMENT HISTORY RECORDED DATE (RETIRED)_ renamed from EMPLOYMENT HISTORY RECORDED DATE

Change to Attribute: Changed status to Retired, Name, Description

The date when the [EMPLOYMENT](#) history was recorded. **This item has been retired from the NHS Data Model and Dictionary.**

The last live version of this item is available in the ?????? release of the NHS Data Model and Dictionary.

Access to this version can be obtained by emailing information.standards@nhs.net with "NHS Data Model and Dictionary - Archive Request" in the email subject line.

EMPLOYMENT HISTORY RECORDED DATE (RETIRED)_ renamed from EMPLOYMENT HISTORY RECORDED DATE

Change to Attribute: Changed status to Retired, Name, Description

- Retired EMPLOYMENT HISTORY RECORDED DATE
- Changed Name from Data_Dictionary.Attributes.E.Emp.EMPLOYMENT_HISTORY_RECORDED_DATE to Retired.Data_Dictionary.Attributes.E.EMPLOYMENT_HISTORY_RECORDED_DATE
- Changed Description

EMPLOYMENT HISTORY RECORDED TIME (RETIRED)_ renamed from EMPLOYMENT HISTORY RECORDED TIME

Change to Attribute: Changed status to Retired, Name, Description

The time on the date when the [EMPLOYMENT](#) history was recorded. **This item has been retired from the NHS Data Model and Dictionary.**

The last live version of this item is available in the ?????? release of the NHS Data Model and Dictionary.

Access to this version can be obtained by emailing information.standards@nhs.net with "NHS Data Model and Dictionary - Archive Request" in the email subject line.

EMPLOYMENT HISTORY RECORDED TIME (RETIRED)_ renamed from EMPLOYMENT HISTORY RECORDED TIME

Change to Attribute: Changed status to Retired, Name, Description

- Retired EMPLOYMENT HISTORY RECORDED TIME
- Changed Name from Data_Dictionary.Attributes.E.Emp.EMPLOYMENT_HISTORY_RECORDED_TIME to Retired.Data_Dictionary.Attributes.E.EMPLOYMENT_HISTORY_RECORDED_TIME
- Changed Description

EMPLOYMENT HISTORY RECRUITMENT SOURCE_ renamed from EMPLOYMENT HISTORY RECRUITMENT SOURCE CODE

Change to Attribute: Changed Name

- Changed Name from Data_Dictionary.Attributes.E.Emp.EMPLOYMENT_HISTORY_RECRUITMENT_SOURCE_CODE to Data_Dictionary.Attributes.E.Emp.EMPLOYMENT_HISTORY_RECRUITMENT_SOURCE

FLEXIBLE WORKING PATTERN TYPE_ renamed from FLEXIBLE WORK PATTERN TYPE CODE

Change to Attribute: Changed Name, Description

The flexible working pattern agreed to and applied to an [EMPLOYMENT CONTRACT](#) for an [EMPLOYEE](#). The type of flexible working pattern agreed to and applied to an [EMPLOYMENT CONTRACT](#) for an [EMPLOYEE](#).

National Codes:

- 01 Annualised Hours
- 02 Other Flexible Working (Retired 01 October 2017)
- 03 Term Time
- 04 Vacation Working
- 05 Home Working (Retired 01 October 2017)
- 06 Condensed Hours Working
- 07 Flexible Retirement
- 08 Home Working - Contracted
- 09 Home Working - Occasional
- 10 Staggered Working Hours
- 98 Other Flexible Working (not listed)

FLEXIBLE WORKING PATTERN TYPE_ renamed from FLEXIBLE WORK PATTERN TYPE CODE

Change to Attribute: Changed Name, Description

- Changed Name from Data_Dictionary.Attributes.F.FLEXIBLE_WORK_PATTERN_TYPE_CODE to Data_Dictionary.Attributes.F.FLEXIBLE_WORKING_PATTERN_TYPE
- Changed Description

JOB ROLE CODE

Change to Attribute: Changed Description

A National Code for a [POSITION](#) applicable to an [EMPLOYEE](#).

National Codes:

Code	Staff Group	Job Role Title
01000	Medical and Dental	
01001		Medical Director
01002		Clinical Director – Medical
01003		Professor
01004		Senior Lecturer
01005		CONSULTANT
01006		Dental surgeon acting as Hospital CONSULTANT
01007		Special salary scale in Public Health Medicine
01008		Associate Specialist (Closed to new entrants from 01 April 2008 or regrading from 01 April 2009)
01009		Staff Grade (Closed to new entrants 01 April 2008)
01010		Hospital Practitioner
01011		Clinical Assistant
01012		Specialist Registrar – Closed (Retired 01 April 2010)
01013		Senior House Officer – Closed (Retired 01 April 2010)
01014		House Officer – Pre registration – Closed (Retired 01 April 2010)
01015		House Officer – Post registration – Closed (Retired 01 April 2010)
01016		Trust Grade Doctor – House Officer level – Closed (Retired 01 April 2010)
01017		Trust Grade Doctor – SHO level – Closed (Retired 01 April 2010)
01018		Trust Grade Doctor – Specialist Registrar level – Closed (Retired 01 April 2010)
01019		Trust Grade Doctor – Career Grade level
01020		Director of Public Health
01021		Clinical Medical Officer
01022		Senior Clinical Medical Officer
01023		'Other' Community Health Service
01024		GENERAL DENTAL PRACTITIONER
01025		GENERAL MEDICAL PRACTITIONER
01026		Salaried GENERAL PRACTITIONER
01027		Regional Dental Officer (Retired 01 October 2017)
01028		Clinical Director – Dental
01029		Dental Officer
01030		Senior Dental Officer
01031		Salaried Dental Practitioner
01032		Specialty Doctor

01033		Foundation Year 1
01034		Foundation Year 2
01035		Specialty Registrar
01036		Medical Student
01037		Trust Grade Doctor – Specialty Registrar
01038		Foundation Dentist
01039		Associate Postgraduate Dean
01040		Trust Grade Doctor - Foundation Level
01041		GP Senior Partner
01042		GP Partner/Provider
01043		GP Retainer
01044		GP Locum
01045		Dental Core Trainee
01046		Specialist Dentist
02000	Students	
02001		Student NURSE – Adult Branch
02002		Student NURSE – Child Branch
02003		Student NURSE – Mental Health Branch
02004		Student NURSE – Learning Disabilities Branch
02005		Student MIDWIFE
02006		Student Health Visitor
02007		Student District Nurse
02008		Student School Nurse
02009		Student Practice Nurse
02010		Student Occupational Health Nurse
02011		Student Community Children's Nurse
02012		Student Mental Health Nurse
02013		Student Learning Disabilities Nurse
02014		Student Chiropodist
02015		Student Dietitian
02016		Student Occupational Therapist
02017		Student Orthoptist
02018		Student Physiotherapist
02019		Student Radiographer – Diagnostic
02020		Student Radiographer – Therapeutic
02021		Student Speech and Language Therapist
02022		Art, Music and Drama Student
02023		Student Psychotherapist
02024		Student Social Worker
03000	Nursing and Midwifery Registered	
03001		Director of Nursing
03002		Nurse Consultant
03003		Nurse Manager
03004		Modern Matron
03005		Specialist Nurse Practitioner
03006		Sister/Charge Nurse

03007		Staff Nurse
03008		Enrolled Nurse
03009		Midwife – Consultant
03010		Midwife – Specialist Practitioner
03011		Midwife – Manager
03012		MIDWIFE – Sister/Charge Nurse (Retired 01 December 2012)
03013		MIDWIFE
03014		Community Practitioner
03015		Community Nurse
03016		Advanced Practitioner
03017		Practice Nurse
03018		Extended Role Practice Nurse
03019		Practice Nurse Partner
03020		Practice Research Nurse
03021		Practice Nurse Dispenser
04000	Allied Health Professionals	
04001		Art Therapist
04002		Art Therapist Consultant
04003		Art Therapist Manager
04004		Art Therapist Specialist Practitioner
04005		Chiropodist/Podiatrist
04006		Chiropodist/Podiatrist Consultant
04007		Chiropodist/Podiatrist Manager
04008		Chiropodist/Podiatrist Specialist Practitioner
04009		Dietitian
04010		Dietitian Consultant
04011		Dietitian Manager
04012		Dietitian Specialist Practitioner
04013		Drama Therapist
04014		Drama Therapist Consultant
04015		Drama Therapist Manager
04016		Drama Therapist Specialist Practitioner
04017		Multi-Therapist
04018		Multi-Therapist Consultant
04019		Multi-Therapist Manager
04020		Multi-Therapist Specialist Practitioner
04021		Music Therapist
04022		Music Therapist Consultant
04023		Music Therapist Manager
04024		Music Therapist Specialist Practitioner
04025		Occupational Therapist
04026		Occupational Therapist Consultant
04027		Occupational Therapist Manager
04028		Occupational Therapist Specialist Practitioner
04029		Orthoptist

04030		Orthoptist Consultant
04031		Orthoptist Manager
04032		Orthoptist Specialist Practitioner
04033		Orthotist
04034		Orthotist Consultant
04035		Orthotist Manager
04036		Orthotist Specialist Practitioner
04037		Paramedic
04038		Paramedic Consultant
04039		Paramedic Manager
04040		Paramedic Specialist Practitioner
04041		Physiotherapist
04042		Physiotherapist Consultant
04043		Physiotherapist Manager
04044		Physiotherapist Specialist Practitioner
04045		Prosthetist
04046		Prosthetist Consultant
04047		Prosthetist Manager
04048		Prosthetist Specialist Practitioner
04049		Radiographer –Diagnostic
04050		Radiographer –Diagnostic, Consultant
04051		Radiographer –Diagnostic, Manager
04052		Radiographer –Diagnostic, Specialist Practitioner
04053		Radiographer –Therapeutic
04054		Radiographer –Therapeutic, Consultant
04055		Radiographer –Therapeutic, Manager
04056		Radiographer –Therapeutic, Specialist Practitioner
04057		Speech and Language Therapist
04058		Speech and Language Therapist Consultant
04059		Speech and Language Therapist Manager
04060		Speech and Language Therapist Specialist Practitioner
04061		Advanced Practitioner
05000	Additional Professional, Scientific and Technical	
05001		Clinical Director
05002		OPTOMETRIST
05003		Pharmacist
05004		Psychotherapist
05005		Clinical Psychologist
05006		Chaplain
05007		Social Worker
05008		Approved Social Worker (Retired 01 October 2017)
05009		Youth Worker
05010		Specialist Practitioner

05011		Practitioner
05012		Technician
05013		Osteopath
05014		High Intensity Therapist
05015		Trainee High Intensity Therapist
05016		Physician Assistant (Retired 01 January 2016)
05017		Advanced Practitioner
05018		Physician Associate
05019		Operating Department Practitioner
05020		Social Care Manager
05021		Manager
05022		Approved Mental Health Professional
06000	Healthcare Scientists	
06001		Clinical Scientist (Retired 01 April 2013)
06002		Consultant Healthcare Scientist
06003		Biomedical Scientist (Retired 01 April 2013)
06004		Technician (Retired 01 April 2013)
06005		Therapist (Retired 01 April 2013)
06006		Manager
06007		Specialist Healthcare Scientist
06008		Healthcare Scientist
06009		Specialist Healthcare Science Practitioner
06010		Healthcare Science Practitioner
07000	Additional Clinical Services	
07001		Health Care Support Worker
07002		Social Care Support Worker
07003		Home Help
07004		Healthcare Assistant
07005		Nursery Nurse
07006		Play Therapist
07007		Play Specialist
07008		Technician
07009		Technical Instructor
07010		Assistant/Associate Practitioner
07011		Counsellor
07012		Helper/Assistant
07013		Dental Surgery Assistant
07014		Medical Laboratory Assistant (Retired 01 January 2016)
07015		Phlebotomist
07016		Cytoscreener
07017		Student Technician
07018		Trainee Scientist
07019		Trainee Practitioner
07020		Nursing Cadet
07021		Healthcare Cadet

07022		Pre-reg Pharmacist
07023		Assistant Psychologist
07024		Assistant Psychotherapist
07025		Call Operator
07026		Gateway Worker
07027		Support, Time, Recovery Worker
07028		Psychological Wellbeing Practitioner
07029		Trainee Psychological Wellbeing Practitioner
07030		Apprentice
07031		Assistant/Associate Practitioner Nursing
07032		Ambulance Care Assistant/Patient Transport Service Driver
07033		Emergency Care Assistant
07034		Emergency Care Practitioner
07035		Emergency Medical Dispatcher/Call Handler
07036		Healthcare Science Associate
07037		Healthcare Science Assistant
07038		Trainee Healthcare Scientist
07039		Trainee Healthcare Science Practitioner
07040		Trainee Healthcare Science Associate
07041		Analyst
08000	Administrative and Clerical	
08001		Clerical Worker
08002		Receptionist
08003		Secretary
08004		Personal Assistant
08005		Medical Secretary
08006		Officer
08007		Manager
08009		Senior Manager
08010		Technician
08011		Accountant
08012		Librarian
08013		Interpreter
08014		Analyst
08015		Adviser
08016		Researcher
08017		Control Assistant
08018		Architect
08019		Lawyer
08020		Surveyor
08021		Chair
08022		Chief Executive
08023		Finance Director
08024		Other Executive Director
08025		Board Level director

08026		Non-executive Director
08027		Childcare Coordinator
08028		Apprentice
09000	Estates and Ancillary	
09001		Support Worker
09002		Housekeeper
09003		Cook
09004		Porter
09005		Driver
09006		Telephonist
09007		Gardener/Groundsperson
09008		Technician
09009		Electrician
09010		Fitter
09011		Assistant
09012		Labourer
09013		Plumber
09014		Carpenter
09015		Bricklayer
09016		Painter/Decorator
09017		Work Analyst
09018		Chargehand
09019		Supervisor
09020		Engineer
09021		Building Officer
09022		Maintenance Craftsperson
09023		Building Craftsperson
09024		Mechanic
09025		Apprentice
10000	Supplementary Roles	
10001		Assessor
10002		Clinical Supervisor
10003		Educational Supervisor
10004		Tutor
01000	Medical and Dental	
01001	Medical Director	
01002	Clinical Director - Medical	
01003	Professor	
01004	Senior Lecturer	
01005	CONSULTANT	
01006	Dental surgeon acting as Hospital CONSULTANT	
01007	Special salary scale in Public Health Medicine	
01008	Associate Specialist (Closed to new entrants from 01 April 2008 or regrading from 01 April 2009)	
01009	Staff Grade (Closed to new entrants 01 April 2008)	

01010	Hospital Practitioner
01011	Clinical Assistant
01012	Specialist Registrar - Closed (Retired 01 April 2010)
01013	Senior House Officer - Closed (Retired 01 April 2010)
01014	House Officer - Pre-registration - Closed (Retired 01 April 2010)
01015	House Officer - Post-registration - Closed (Retired 01 April 2010)
01016	Trust Grade Doctor - House Officer level - Closed (Retired 01 April 2010)
01017	Trust Grade Doctor - SHO level - Closed (Retired 01 April 2010)
01018	Trust Grade Doctor - Specialist Registrar level - Closed (Retired 01 April 2010)
01019	Trust Grade Doctor - Career Grade level
01020	Director of Public Health
01021	Clinical Medical Officer
01022	Senior Clinical Medical Officer
01023	'Other' Community Health Service
01024	GENERAL PRACTITIONER
01025	GENERAL PRACTITIONER
01026	Salaried GENERAL PRACTITIONER
01027	Regional Dental Officer (Retired 01 October 2017)
01028	Clinical Director - Dental
01029	Dental Officer
01030	Senior Dental Officer
01031	Salaried Dental Practitioner
01032	Specialty Doctor
01033	Foundation Year 1
01034	Foundation Year 2
01035	Specialty Registrar
01036	Medical Student
01037	Trust Grade Doctor - Specialty Registrar
01038	Foundation Dentist
01039	Associate Postgraduate Dean
01040	Trust Grade Doctor - Foundation Level
01041	GP Senior Partner
01042	GP Partner/Provider
01043	GP Retainer
01044	GP Locum
01045	Dental Core Trainee
01046	Specialist Dentist
02000	Students
02001	Student NURSE - Adult Branch
02002	Student NURSE - Child Branch

02003	Student <u>NURSE</u> - Mental Health Branch
02004	Student <u>NURSE</u> - Learning Disabilities Branch
02005	Student <u>MIDWIFE</u>
02006	Student <u>Health Visitor</u>
02007	Student <u>District Nurse</u>
02008	Student <u>School Nurse</u>
02009	Student <u>Practice Nurse</u>
02010	Student <u>Occupational Health Nurse</u>
02011	Student <u>Community Children's Nurse</u>
02012	Student <u>Mental Health Nurse</u>
02013	Student <u>Learning Disabilities Nurse</u>
02014	Student <u>Chiropodist</u>
02015	Student <u>Dietitian</u>
02016	Student <u>Occupational Therapist</u>
02017	Student <u>Orthoptist</u>
02018	Student <u>Physiotherapist</u>
02019	Student <u>Radiographer - Diagnostic</u>
02020	Student <u>Radiographer - Therapeutic</u>
02021	Student <u>Speech and Language Therapist</u>
02022	Art, Music and Drama Student
02023	Student <u>Psychotherapist</u>
02024	Student <u>Social Worker</u>
02025	Student <u>Paramedic</u>
02026	Student <u>Prosthetics and Orthotics</u>
03000	Nursing and Midwifery Registered
03001	Director of Nursing
03002	Nurse Consultant
03003	Nurse Manager
03004	Modern Matron
03005	Specialist Nurse Practitioner
03006	Sister/Charge Nurse
03007	Staff Nurse
03008	Enrolled Nurse
03009	Midwife - Consultant
03010	Midwife - Specialist Practitioner
03011	Midwife - Manager
03012	MIDWIFE - Sister/Charge Nurse (Retired 01 December 2012)
03013	<u>MIDWIFE</u>
03014	Community Practitioner
03015	Community Nurse
03016	Advanced Practitioner
03017	Practice Nurse
03018	Extended Role Practice Nurse
03019	Practice Nurse Partner
03020	Practice Research Nurse

03021	Practice Nurse Dispenser
04000	Allied Health Professionals
04001	Art Therapist
04002	Art Therapist Consultant
04003	Art Therapist Manager
04004	Art Therapist Specialist Practitioner
04005	Chiropodist/Podiatrist
04006	Chiropodist/Podiatrist Consultant
04007	Chiropodist/Podiatrist Manager
04008	Chiropodist/Podiatrist Specialist Practitioner
04009	Dietitian
04010	Dietitian Consultant
04011	Dietitian Manager
04012	Dietitian Specialist Practitioner
04013	Drama Therapist
04014	Drama Therapist Consultant
04015	Drama Therapist Manager
04016	Drama Therapist Specialist Practitioner
04017	Multi Therapist
04018	Multi Therapist Consultant
04019	Multi Therapist Manager
04020	Multi Therapist Specialist Practitioner
04021	Music Therapist
04022	Music Therapist Consultant
04023	Music Therapist Manager
04024	Music Therapist Specialist Practitioner
04025	Occupational Therapist
04026	Occupational Therapist Consultant
04027	Occupational Therapist Manager
04028	Occupational Therapist Specialist Practitioner
04029	Orthoptist
04030	Orthoptist Consultant
04031	Orthoptist Manager
04032	Orthoptist Specialist Practitioner
04033	Orthotist
04034	Orthotist Consultant
04035	Orthotist Manager
04036	Orthotist Specialist Practitioner
04037	Paramedic
04038	Paramedic Consultant
04039	Paramedic Manager
04040	Paramedic Specialist Practitioner
04041	Physiotherapist
04042	Physiotherapist Consultant
04043	Physiotherapist Manager
04044	Physiotherapist Specialist Practitioner

04045	Prosthetist
04046	Prosthetist Consultant
04047	Prosthetist Manager
04048	Prosthetist Specialist Practitioner
04049	Radiographer - Diagnostic
04050	Radiographer - Diagnostic, Consultant
04051	Radiographer - Diagnostic, Manager
04052	Radiographer - Diagnostic, Specialist Practitioner
04053	Radiographer - Therapeutic
04054	Radiographer - Therapeutic, Consultant
04055	Radiographer - Therapeutic, Manager
04056	Radiographer - Therapeutic, Specialist Practitioner
04057	Speech and Language Therapist
04058	Speech and Language Therapist Consultant
04059	Speech and Language Therapist Manager
04060	Speech and Language Therapist Specialist Practitioner
04061	Advanced Practitioner
04062	Emergency Care Practitioner
05000	Additional Professional, Scientific and Technical
05001	Clinical Director
05002	OPTOMETRIST
05003	Pharmacist
05004	Psychotherapist
05005	Applied Psychologist - Clinical
05006	Chaplain
05007	Social Worker
05008	Approved Social Worker (Retired 01 October 2017)
05009	Youth Worker
05010	Specialist Practitioner
05011	Practitioner
05012	Technician
05013	Osteopath
05014	High Intensity Therapist
05015	Trainee High Intensity Therapist
05016	Physician Assistant (Retired 01 January 2016)
05017	Advanced Practitioner
05018	Physician Associate
05019	Operating Department Practitioner
05020	Social Care Manager
05021	Manager
05022	Approved Mental Health Professional
05023	Trainee Clinical Psychologist
05024	Trainee Counselling Psychologist

05025	Trainee Health Psychologist
05026	Trainee Other Applied Psychologist
05027	Applied Psychologist – Counselling
05028	Applied Psychologist – Educational
05029	Applied Psychologist – Forensic
05030	Applied Psychologist – Health
05031	Applied Psychologist – Occupational
05032	Applied Psychologist – Sport and Exercise
05033	Applied Psychologist – Neuropsychologist
05034	Counsellor
05035	Social Worker - Psychological Therapist
05036	Play Therapist
05037	Family Therapist
05038	Child and Adolescent Psychological Therapist or Psychotherapist
05039	Surgical Care Practitioner
06000	Healthcare Scientists
06001	Clinical Scientist (Retired 01 April 2013)
06002	Consultant Healthcare Scientist
06003	Biomedical Scientist (Retired 01 April 2013)
06004	Technician (Retired 01 April 2013)
06005	Therapist (Retired 01 April 2013)
06006	Manager
06007	Specialist Healthcare Scientist
06008	Healthcare Scientist
06009	Specialist Healthcare Science Practitioner
06010	Healthcare Science Practitioner
07000	Additional Clinical Services
07001	Health Care Support Worker
07002	Social Care Support Worker
07003	Home Help
07004	Healthcare Assistant
07005	Nursery Nurse
07006	Play Therapist
07007	Play Specialist
07008	Technician
07009	Technical Instructor
07010	Assistant/Associate Practitioner
07011	Counsellor
07012	Assistant
07013	Dental Surgery Assistant
07014	Medical Laboratory Assistant (Retired 01 January 2016)
07015	Phlebotomist
07016	Cytoscreener
07017	Student Technician

07018	Trainee Scientist
07019	Trainee Practitioner
07020	Nursing Cadet
07021	Healthcare Cadet
07022	Pre-reg Pharmacist
07023	Assistant Psychologist
07024	Assistant Psychotherapist
07025	Call Operator
07026	Gateway Worker
07027	Support, Time, Recovery Worker
07028	Psychological Wellbeing Practitioner
07029	Trainee Psychological Wellbeing Practitioner
07030	Apprentice (Retired 01 January 2019)
07031	Assistant Practitioner Nursing
07032	Ambulance Care Assistant/Patient Transport Service Driver
07033	Emergency Care Assistant
07034	Emergency Care Practitioner (Retired 01 January 2019)
07035	Emergency Medical Dispatcher
07036	Healthcare Science Associate
07037	Healthcare Science Assistant
07038	Trainee Healthcare Scientist
07039	Trainee Healthcare Science Practitioner
07040	Trainee Healthcare Science Associate
07041	Analyst
07042	Emergency Call Handler
07043	Urgent Care Assistant
07044	Urgent Care Practitioner
07045	Employment Support Worker or Advisor
07046	Family Therapist
07047	Nursing Associate
07048	Trainee Nursing Associate
08000	Administrative and Clerical
08001	Clerical Worker
08002	Receptionist
08003	Secretary
08004	Personal Assistant
08005	Medical Secretary
08006	Officer
08007	Manager
08009	Senior Manager
08010	Technician
08011	Accountant
08012	Librarian
08013	Interpreter

08014	Analyst
08015	Adviser
08016	Researcher
08017	Control Assistant
08018	Architect
08019	Lawyer
08020	Surveyor
08021	Chair
08022	Chief Executive
08023	Finance Director
08024	Other Executive Director
08025	Board Level director
08026	Non-executive Director
08027	Childcare Coordinator
08028	Apprentice (Retired 01 January 2019)
08029	Non-Emergency Call Handler
08030	Non-Emergency Medical Dispatcher
09000	Estates and Ancillary
09001	Support Worker
09002	Housekeeper
09003	Cook
09004	Porter
09005	Driver
09006	Telephonist
09007	Gardener/Groundsperson
09008	Technician
09009	Electrician
09010	Fitter
09011	Assistant
09012	Labourer
09013	Plumber
09014	Carpenter
09015	Bricklayer
09016	Painter/Decorator
09017	Work Analyst
09018	Chargehand
09019	Supervisor
09020	Engineer
09021	Building Officer
09022	Maintenance Craftsperson
09023	Building Craftsperson
09024	Mechanic
09025	Apprentice (Retired 01 January 2019)
09026	Cleaner
10000	Supplementary Roles
10001	Assessor

10002	Clinical Supervisor
10003	Educational Supervisor
10004	Tutor

ORGANISATION TYPE FOR WORKFORCE (RETIRED)_ renamed from ORGANISATION TYPE FOR WORKFORCE

Change to Attribute: Changed status to Retired, Name, Description

A list of [Organisation](#) according to the nature of the [Organisation](#) for the purpose of the [National Workforce Data Set](#). **This item has been retired from the NHS Data Model and Dictionary.**

Organisation Type-Code	Organisation Type-Name	Comments
AR	Application Service Provider	
BM	Booking Management System (BMS) Call Centre Establishment	
CN	Cancer Network	
CR	Cancer Registry	All Cancer Registries in England are now part of the National Cancer Registration and Analysis Service
CQ	Care Home Headquarters	
CT	Care Trust	
CG	Clinical Commissioning Group (CCG)	
CL	Clinical Network	
CA	Commissioning Support Unit (CSU)	
JG	Court	
DD	Dental Practice	Includes "NHS and Private" and "Private only" Dental Practices
ED	Education Establishment	
EA	Executive Agency	
AP	Executive Agency Programme	
GD	Government Department	
GO	Government Office Region (GOR)	Government Office Regions (GORs) closed 31 March 2011 – from 1 April 2011 referred to as Regions
AA	GP Abeyance and Dispersal GP Practice	
PR	GP Practices in England and Wales	
HA	High Level Health Geography	For example, NHS England (Region Local Office)
JD	Immigration Removal Centre	
PH	Independent Sector Healthcare Provider (ISHP)	
EL	Local Authority	
LB	Local Health Board (Wales)	
LO	Local Service Provider (LSP)	

MH	Military Hospital	
NP	National Application Service Provider	
RO	National Groupings	For example, NHS England (Regions) , National Groupings (England), NHS Wales Informatics Service (NWIS)
NS	NHS Support Agency	
TR	NHS Trust	
NN	Non-NHS Organisation	
NA	Northern Ireland Health & Social Care Board	
NB	Northern Ireland Health & Social Care Trust	
NC	Northern Ireland Local Commissioning Group	
OH	Optical Headquarters	
OA	Other Statutory Authority (OSA)	
PY	Pharmacy	
PX	Pharmacy Headquarters	
JE	Police Constabulary	
JF	Police Custody Suite	
PT	Primary Care Trust	Primary Care Trusts closed 31 March 2013
ID	Primary Healthcare Directorate (Isle of Man)	
PN	Prison Health Service	
EE	School	
JG	Secure Children's Home	
JB	Secure Training Centre (STC)	
JH	Sexual Assault Referral Centre (SARC)	
SA	Special Health Authority (SpHA)	
WA	Welsh Assembly	
WH	Welsh Health Commission	
LH	Welsh Local Health Board	All Welsh Local Health Boards closed on 30 September 2009. Local Health Boards (Wales) introduced from 1 October 2009.
JA	Young Offender Institution	

The last live version of this item is available in the ??????? release of the NHS Data Model and Dictionary.

Access to this version can be obtained by emailing information.standards@nhs.net with "NHS Data Model and Dictionary - Archive Request" in the email subject line.

ORGANISATION TYPE FOR WORKFORCE (RETIRED) renamed from ORGANISATION TYPE FOR WORKFORCE

Change to Attribute: Changed status to Retired, Name, Description

- Retired ORGANISATION TYPE FOR WORKFORCE
- Changed Name from Data_Dictionary.Attributes.O.Org.ORGANISATION_TYPE_FOR_WORKFORCE to Retired.Data_Dictionary.Attributes.O.ORGANISATION_TYPE_FOR_WORKFORCE

- Changed Description

PAYSCALE CODE

Change to Attribute: Changed Description

A unique identifier of a [PAYSCALE](#). A unique code of a [PAYSCALE](#).

PAYSCALE SPINE POINT_ renamed from PAYSCALE SPINE POINT CODE

Change to Attribute: Changed Name

- Changed Name from Data_Dictionary.Attributes.P.Paya.PAYSCALE_SPINE_POINT_CODE to Data_Dictionary.Attributes.P.Paya.PAYSCALE_SPINE_POINT

POSITION ROTA PATTERN TYPE_ renamed from POSITION ROTA PATTERN CODE

Change to Attribute: Changed Name, Description

The shift rota pattern of a [POSITION](#). The type of rota pattern applicable to a [POSITION](#).

Note: this is only applicable to Medical and Dental Staff.

National Codes:

- 01 On Call
- 02 Partial Shift
- 03 Full shift
- 04 24 Hour Partial Shift
- 05 Hybrid

POSITION ROTA PATTERN TYPE_ renamed from POSITION ROTA PATTERN CODE

Change to Attribute: Changed Name, Description

- Changed Name from Data_Dictionary.Attributes.P.Pos.POSITION_ROTA_PATTERN_CODE to Data_Dictionary.Attributes.P.Pos.POSITION_ROTA_PATTERN_TYPE
- Changed Description

POSITION SHIFT TYPE_ renamed from POSITION SHIFT TYPE CODE

Change to Attribute: Changed Name

- Changed Name from Data_Dictionary.Attributes.P.Pos.POSITION_SHIFT_TYPE_CODE to Data_Dictionary.Attributes.P.Pos.POSITION_SHIFT_TYPE

POSITION STATUS_ renamed from POSITION STATUS CODE

Change to Attribute: Changed Name

- Changed Name from Data_Dictionary.Attributes.P.Pos.POSITION_STATUS_CODE to Data_Dictionary.Attributes.P.Pos.POSITION_STATUS

POSITION VACANCY STATUS_ renamed from POSITION VACANCY STATUS CODE

Change to Attribute: Changed Name, Description

A code which denotes the status of a [POSITION VACANCY](#) where the [POSITION STATUS CODE](#) of the [POSITION](#) is National Code 06 'Vacant'. [POSITION VACANCY STATUS](#) is the vacancy status of a [POSITION VACANCY](#) where the [POSITION STATUS](#) is National Code 06 'Vacant'.

National Codes:

- | | |
|----|--|
| 01 | Open |
| 02 | Approved |
| 03 | Hold |
| 04 | Pending |
| 05 | Rejected |
| 06 | Unapproved |
| 07 | Suspended |
| 08 | Terminated |
| 09 | Filled |
| 10 | Closed |
| 11 | Open Following Previous Unsuccessful Attempt |
| 12 | Partially Filled |

POSITION VACANCY STATUS_ renamed from POSITION VACANCY STATUS CODE

Change to Attribute: Changed Name, Description

- Changed Name from Data_Dictionary.Attributes.P.Pos.POSITION_VACANCY_STATUS_CODE to Data_Dictionary.Attributes.P.Pos.POSITION_VACANCY_STATUS
- Changed Description

PROFESSIONAL REGISTRATION BODY CODE

Change to Attribute: Changed Description

A code which identifies the [PROFESSIONAL REGISTRATION BODY](#).

National Codes:

- | | |
|----|--|
| 01 | General Chiropractic Council |
| 02 | General Dental Council |
| 03 | General Medical Council |
| 04 | General Optical Council |
| 05 | Care Council for Wales |
| 05 | Social Care Wales ** |
| 06 | Scottish Social Services Council (Retired 01 April 2013) |
| 07 | General Social Care Council (for England) (Retired 01 August 2012) |
| 08 | Health and Care Professions Council |
| 09 | Nursing and Midwifery Council |
| 10 | Royal Pharmaceutical Society (Retired 27 September 2010) |
| 11 | British Psychological Society (Retired 01 October 2017) |
| 12 | Association for Operating Department Practitioners (Retired January 2015) |
| 13 | Association of Chartered Certified Accountants (Retired 01 October 2017) |
| 14 | Chartered Institute of Personnel and Development (Retired 01 October 2017) |
| 15 | Chartered Institute of Management Accountants (Retired 01 October 2017) |
| 16 | General Pharmaceutical Council |

* ~~Note: National Code 17 is not valid for use in the [Community Services Data Set](#) and [Mental Health Services Data Set](#).~~Notes:

•
* National Codes 17 is not valid for use in the [Community Services Data Set](#) and [Mental Health Services Data Set](#).

•
** The National Code description has been updated as a result of the work undertaken for the development of the [National Workforce Data Set](#).

The [Community Services Data Set](#) and [Mental Health Services Data Set](#) specifications will be updated in the next versions of the Information Standards where they are not already correct.

PROFESSIONAL REGISTRATION TYPE

Change to Attribute: Changed Description

The type of [PROFESSIONAL REGISTRATION](#).

National Codes:

- 01 Association of Chartered Certified Accountants (ACCA) - Affiliate Membership (Retired 01 October 2017)
- 02 Association of Chartered Certified Accountants (ACCA) - Full Membership (Retired 01 October 2017)
- 03 Chartered Institute of Management Accountants (CIMA) - ACMA (Associate Membership) (Retired 01 October 2017)
- 04 Chartered Institute of Management Accountants (CIMA) - FCMA (Full Membership) (Retired 01 October 2017)
- 05 Chartered Institute of Management Accountants (CIMA) - Passed Finalist (Retired 01 October 2017)
- 06 ~~Chartered Institute of Management Accountants (CIMA) - Student (Retired 01 October 2017)~~
- 06 [Chartered Institute of Management Accountants \(CIMA\) - Student \(Retired 01 October 2017\)](#)**
- 07 Chartered Institute of Personnel and Development (CIPD) - Associate Member (Retired 01 October 2017)
- 08 Chartered Institute of Personnel and Development (CIPD) - Companion (Retired 01 October 2017)
- 09 Chartered Institute of Personnel and Development (CIPD) - Fellow (Retired 01 October 2017)
- 10 Chartered Institute of Personnel and Development (CIPD) - Graduate Member (Retired 01 October 2017)
- 11 Chartered Institute of Personnel and Development (CIPD) - Licentiate Member (Retired 01 October 2017)
- 12 Chartered Institute of Personnel and Development (CIPD) - Member (Retired 01 October 2017)
- 13 [General Dental Council \(GDC\)](#) - Full
- 14 [General Dental Council \(GDC\)](#) - Temporary
- 15 [General Medical Council \(GMC\)](#) - Full
- 16 [General Medical Council \(GMC\)](#) - Limited
- 17 [General Medical Council \(GMC\)](#) - Provisional
- 18 [General Medical Council \(GMC\)](#) - Temporary
- 19 [Health and Care Professions Council \(HCPC\)](#) - [Arts Therapist](#)
- 20 [Health and Care Professions Council \(HCPC\)](#) - [Chiropodist/ Podiatrist](#)
- 21 [Health and Care Professions Council \(HCPC\)](#) - [Clinical Scientist](#)
- 22 [Health and Care Professions Council \(HCPC\)](#) - [Dietitian](#)
- 23 [Health and Care Professions Council \(HCPC\)](#) - [Biomedical Scientist](#)

- 24 [Health and Care Professions Council \(HCPC\)](#) - [Occupational Therapist](#)
- 25 [Health and Care Professions Council \(HCPC\)](#) - [Operating Department Practitioner](#)
- 26 [Health and Care Professions Council \(HCPC\)](#) - [Orthoptist](#)
- 27 [Health and Care Professions Council \(HCPC\)](#) - [Paramedic](#)
- 28 [Health and Care Professions Council \(HCPC\)](#) - [Physiotherapist](#)
- 29 [Health and Care Professions Council \(HCPC\)](#) - [Prosthetist/ Orthotist](#)
- 30 [Health and Care Professions Council \(HCPC\)](#) - [Radiographer](#)
- 31 [Health and Care Professions Council \(HCPC\)](#) - [Speech and Language Therapist](#)
- 32 [Nursing and Midwifery Council \(NMC\)](#) - [MIDWIFE](#)
- 33 [Nursing and Midwifery Council \(NMC\)](#) - [NURSE \(Level One Nurse\)](#)
- 34 [Nursing and Midwifery Council \(NMC\)](#) - [NURSE \(Level Two Nurse\)](#)
- 35 [Nursing and Midwifery Council \(NMC\)](#) - [Specialist Community Public Health Nurse](#)
- 36 [Nursing and Midwifery Council \(NMC\)](#) - [NURSE](#)
- 37 General Social Care Council (GSCC)/ Scottish Social Services Council (SSSC)/ Care Council for Wales (CCW) - Social Worker (Retired 01 December 2012)
- 38 [Health and Care Professions Council \(HCPC\)](#) - [Social Worker](#) in England
- 39 [Health and Care Professions Council \(HCPC\)](#) - Registered Student (Retired 01 April 2013)
- 40 [Health and Care Professions Council \(HCPC\)](#) - [Hearing Aid Dispenser](#)
- 41 [Health and Care Professions Council \(HCPC\)](#) - [Practitioner Psychologist](#)
- 42 Care Council for Wales (CCW) - Part 1 - [Social Workers](#)
- 43 Care Council for Wales (CCW) - Part 2 - [Social Care Workers](#)
- 44 [General Pharmaceutical Council \(GPhC\)](#) - [Pharmacist](#)
- 45 [General Pharmaceutical Council \(GPhC\)](#) - [Pharmacist](#) Technician
- 46 [General Pharmaceutical Council \(GPhC\)](#) - Registered Student

QUALIFICATION SUBJECT AREA_ renamed from QUALIFICATION SUBJECT AREA CODE

Change to Attribute: Changed Name, Description

A broad category of a [QUALIFICATION](#). The subject area covered by a [QUALIFICATION](#).

National Codes:

- 01 Academic subjects at a high level, for example Mathematics
- 02 Specialties and sub-specialties recognised by the Postgraduate Medical Education and Training Board (PMEBTB) for specialist training
- 03 The recognised branches of training for [NURSES](#) or [MIDWIVES](#)

QUALIFICATION SUBJECT AREA_ renamed from QUALIFICATION SUBJECT AREA CODE

Change to Attribute: Changed Name, Description

- Changed Name from Data_Dictionary.Attributes.Q.QUALIFICATION_SUBJECT_AREA_CODE to Data_Dictionary.Attributes.Q.QUALIFICATION_SUBJECT_AREA
- Changed Description

QUALIFICATION TYPE_ renamed from QUALIFICATION TYPE CODE

Change to Attribute: Changed Name

- Changed Name from Data_Dictionary.Attributes.Q.QUALIFICATION_TYPE_CODE to Data_Dictionary.Attributes.Q.QUALIFICATION_TYPE

STAFF GROUP_ renamed from STAFF GROUP CODE

Change to Attribute: Changed Name

- Changed Name from Data_Dictionary.Attributes.S.Spe.STAFF_GROUP_CODE to Data_Dictionary.Attributes.S.Spe.STAFF_GROUP
-

TRAINING ACTIVITY ACCREDITATION CREDIT AMOUNT

Change to Attribute: Changed Description

~~A record of professional or academic accreditation gained from successful completion of a [EMPLOYEE TRAINING ACTIVITY](#).~~ A record of professional or academic accreditation gained from successful completion of an [EMPLOYEE TRAINING ACTIVITY](#).

TRAINING ACTIVITY ASSESSOR TYPE_ renamed from TRAINING ACTIVITY ASSESSOR TYPE CODE

Change to Attribute: Changed Name

- Changed Name from Data_Dictionary.Attributes.T.Tes.TRAINING_ACTIVITY_ASSESSOR_TYPE_CODE to Data_Dictionary.Attributes.T.Tes.TRAINING_ACTIVITY_ASSESSOR_TYPE
-

TRAINING ACTIVITY DELIVERY METHOD_ renamed from TRAINING ACTIVITY DELIVERY METHOD TYPE CODE

Change to Attribute: Changed Name, Description

~~The method employed to deliver a [EMPLOYEE TRAINING ACTIVITY](#).~~ The method employed to deliver an [EMPLOYEE TRAINING ACTIVITY](#).

National Codes:

- 01 Coaching Conference
 - 02 Course
 - 03 Distance Learning
 - 04 E-learning
 - 05 Instructor-led
 - 06 Mentoring
 - 07 On the Job
 - 08 Professional Network Meeting
 - 09 Self-pace Learning
 - 10 Seminar
-

TRAINING ACTIVITY DELIVERY METHOD_ renamed from TRAINING ACTIVITY DELIVERY METHOD TYPE CODE

Change to Attribute: Changed Name, Description

- Changed Name from Data_Dictionary.Attributes.T.Tes.TRAINING_ACTIVITY_DELIVERY_METHOD_TYPE_CODE to Data_Dictionary.Attributes.T.Tes.TRAINING_ACTIVITY_DELIVERY_METHOD
 - Changed Description
-

TRAINING ACTIVITY START DATE

Change to Attribute: Changed Description

The date on which a [EMPLOYEE TRAINING ACTIVITY](#) undertaken by an [EMPLOYEE](#) commenced. The date on which an [EMPLOYEE TRAINING ACTIVITY](#) undertaken by an [EMPLOYEE](#) commenced.

TRAINING ACTIVITY TYPE_ renamed from TRAINING ACTIVITY TYPE CODE

Change to Attribute: Changed Name, Description

The type of [EMPLOYEE TRAINING ACTIVITY](#).

National Codes:

- 01 Customer Relations
- 02 Health and Safety
- 03 Induction
- 04 Informatics
- 05 Medical Equipment
- 06 Occupational Knowledge and Skills
- 07 Personal Development
- 08 Postgraduate Health Care and Medical Education
- 09 Resuscitation
- 10 Risk Management

TRAINING ACTIVITY TYPE_ renamed from TRAINING ACTIVITY TYPE CODE

Change to Attribute: Changed Name, Description

- Changed Name from Data_Dictionary.Attributes.T.Tes.TRAINING_ACTIVITY_TYPE_CODE to Data_Dictionary.Attributes.T.Tes.TRAINING_ACTIVITY_TYPE
- Changed Description

ASSIGNMENT STATUS_ renamed from ASSIGNMENT STATUS CODE

Change to Data Element: Changed linked Attribute, Name

ASSIGNMENT STATUS CODE ASSIGNMENT STATUS Attribute: ASSIGNMENT STATUS CODE ASSIGNMENT STATUS	ASSIGNMENT STATUS_ renamed from ASSIGNMENT STATUS CODE Change to Data Element: Changed linked Attribute, Name null Changed Name from Data_Dictionary.Data_Field_Notes.A.As.ASSIGNMENT_STATUS_CODE to Data_Dictionary.Data_Field_Notes.A.As.ASSIGNMENT_STATUS
---	--

ASSIGNMENT TYPE_ renamed from ASSIGNMENT TYPE CODE

Change to Data Element: Changed linked Attribute, Name

ASSIGNMENT TYPE CODE ASSIGNMENT TYPE Attribute: ASSIGNMENT TYPE CODE ASSIGNMENT TYPE	ASSIGNMENT TYPE_ renamed from ASSIGNMENT TYPE CODE Change to Data Element: Changed linked Attribute, Name null
---	---

- Changed Name from Data_Dictionary.Data_Field_Notes.A.As.ASSIGNMENT_TYPE_CODE to Data_Dictionary.Data_Field_Notes.A.As.ASSIGNMENT_TYPE

EMPLOYEE ABSENCE CATEGORY_ renamed from EMPLOYEE ABSENCE CATEGORY CODE

Change to Data Element: Changed linked Attribute, Name

EMPLOYEE ABSENCE CATEGORY CODE EMPLOYEE ABSENCE CATEGORY Attribute: EMPLOYEE ABSENCE CATEGORY_CODE EMPLOYEE ABSENCE CATEGORY	EMPLOYEE ABSENCE CATEGORY_ renamed from EMPLOYEE ABSENCE CATEGORY CODE Change to Data Element: Changed linked Attribute, Name
--	--

- null
- Changed Name from Data_Dictionary.Data_Field_Notes.E.Emp.EMPLOYEE_ABSENCE_CATEGORY_CODE to Data_Dictionary.Data_Field_Notes.E.Emp.EMPLOYEE_ABSENCE_CATEGORY

EMPLOYEE ABSENCE SICKNESS REASON_ renamed from EMPLOYEE ABSENCE SICKNESS REASON CODE

Change to Data Element: Changed linked Attribute, Name

EMPLOYEE ABSENCE SICKNESS REASON CODE EMPLOYEE ABSENCE SICKNESS REASON Attribute: EMPLOYEE ABSENCE SICKNESS REASON_CODE EMPLOYEE ABSENCE SICKNESS REASON	EMPLOYEE ABSENCE SICKNESS REASON_ renamed from EMPLOYEE ABSENCE SICKNESS REASON CODE Change to Data Element:
--	---

Changed linked Attribute, Name

- null
- Changed Name from Data_Dictionary.Data_Field_Notes.E.Emp.EMPLOYEE_ABSENCE_SICKNESS_REASON_CODE to Data_Dictionary.Data_Field_Notes.E.Emp.EMPLOYEE_ABSENCE_SICKNESS_REASON

EMPLOYEE ABSENCE TYPE_ renamed from EMPLOYEE ABSENCE TYPE CODE

Change to Data Element: Changed linked Attribute, Name

EMPLOYEE ABSENCE TYPE CODE EMPLOYEE ABSENCE TYPE Attribute: EMPLOYEE ABSENCE TYPE_CODE EMPLOYEE ABSENCE TYPE	EMPLOYEE ABSENCE TYPE_ renamed from EMPLOYEE ABSENCE TYPE CODE Change to Data Element: Changed linked Attribute, Name
--	--

- null
- Changed Name from Data_Dictionary.Data_Field_Notes.E.Emp.EMPLOYEE_ABSENCE_TYPE_CODE to Data_Dictionary.Data_Field_Notes.E.Emp.EMPLOYEE_ABSENCE_TYPE

EMPLOYEE ABSENCE WORKING HOURS LOST (REPORTING PERIOD)

Change to Data Element: Changed Description

Format/Length:	max n4
NWDS ID:	AWHL
NWDS Field Name:	Working Hours Lost due to Absence
National Codes:	

Default Codes:

Notes:

EMPLOYEE ABSENCE WORKING HOURS LOST (REPORTING PERIOD) is the sum total of each EMPLOYEE ABSENCE WORKING HOURS LOST due to absence of an EMPLOYEE within an Organisation during the REPORTING PERIOD.

EMPLOYEE ABSENCE WORKING HOURS LOST (REPORTING PERIOD) is the number of working hours lost of an EMPLOYEE absence. It is based upon the EMPLOYMENT CONTRACT WORKING HOURS for the POSITION of the EMPLOYEE in the period of the EMPLOYEE absence as recorded by the EMPLOYEE ABSENCE START DATE and EMPLOYEE ABSENCE END DATE.

For guidance on how to calculate this, see the [NHS Digital](#) website at: [National Workforce Data Set \(NWD\) guidance documents](#).

EMPLOYEE DISABILITY STATUS_ renamed from EMPLOYEE DISABILITY STATUS CODE

Change to Data Element: Changed linked Attribute, Name

EMPLOYEE DISABILITY STATUS CODE	EMPLOYEE DISABILITY STATUS_ renamed from EMPLOYEE DISABILITY STATUS CODE
EMPLOYEE DISABILITY STATUS	
Attribute:	
<u>EMPLOYEE DISABILITY STATUS CODE</u>	Change to Data Element: Changed linked Attribute, Name
<u>EMPLOYEE DISABILITY STATUS</u>	
• null	
• Changed Name from	
Data_Dictionary.Data_Field_Notes.E.Emp.EMPLOYEE_DISABILITY_STATUS_CODE	to
Data_Dictionary.Data_Field_Notes.E.Emp.EMPLOYEE_DISABILITY_STATUS	

EMPLOYEE LENGTH OF TIME IN POSITION

Change to Data Element: Changed Description

Format/Length:	max n3
NWDS ID:	STER
NWDS Field Name:	Time in Post (Derived)
National Codes:	
Default Codes:	

Notes:

EMPLOYEE LENGTH OF TIME IN POSITION is the number of months an EMPLOYEE has been employed in a POSITION in an Organisation.

For guidance on how to calculate this, see the [NHS Digital](#) website at: [National Workforce Data Set \(NWD\) guidance documents](#).

EMPLOYMENT CONTRACT SESSION TYPE_ renamed from EMPLOYMENT CONTRACT SESSION TYPE CODE

Change to Data Element: Changed linked Attribute, Name

EMPLOYMENT CONTRACT SESSION TYPE CODE

EMPLOYMENT CONTRACT SESSION TYPE

Attribute:

EMPLOYMENT CONTRACT SESSION TYPE_CODE

EMPLOYMENT CONTRACT SESSION TYPE

EMPLOYMENT CONTRACT SESSION TYPE renamed from EMPLOYMENT CONTRACT SESSION TYPE CODE

Change to Data Element:

Changed linked Attribute, Name

- null
- Changed Name from Data_Dictionary.Data_Field_Notes.E.Emp.EMPLOYMENT_CONTRACT_SESSION_TYPE_CODE to Data_Dictionary.Data_Field_Notes.E.Emp.EMPLOYMENT_CONTRACT_SESSION_TYPE

EMPLOYMENT CONTRACT TYPE renamed from EMPLOYMENT CONTRACT TYPE CODE

Change to Data Element: Changed linked Attribute, Name

EMPLOYMENT CONTRACT TYPE_CODE

EMPLOYMENT CONTRACT TYPE

Attribute:

EMPLOYMENT CONTRACT TYPE_CODE

EMPLOYMENT CONTRACT TYPE

EMPLOYMENT CONTRACT TYPE renamed from EMPLOYMENT CONTRACT TYPE CODE

Change to Data Element: Changed linked Attribute, Name

- null
- Changed Name from Data_Dictionary.Data_Field_Notes.E.Emp.EMPLOYMENT_CONTRACT_TYPE_CODE to Data_Dictionary.Data_Field_Notes.E.Emp.EMPLOYMENT_CONTRACT_TYPE

EMPLOYMENT HISTORY LEAVING DESTINATION renamed from EMPLOYMENT HISTORY LEAVING DESTINATION CODE

Change to Data Element: Changed Name

- Changed Name from Data_Dictionary.Data_Field_Notes.E.Emp.EMPLOYMENT_HISTORY_LEAVING_DESTINATION_CODE to Data_Dictionary.Data_Field_Notes.E.Emp.EMPLOYMENT_HISTORY_LEAVING_DESTINATION

EMPLOYMENT HISTORY LEAVING REASON renamed from EMPLOYMENT HISTORY LEAVING REASON CODE

Change to Data Element: Changed Name

- Changed Name from Data_Dictionary.Data_Field_Notes.E.Emp.EMPLOYMENT_HISTORY_LEAVING_REASON_CODE to Data_Dictionary.Data_Field_Notes.E.Emp.EMPLOYMENT_HISTORY_LEAVING_REASON

EMPLOYMENT HISTORY RECRUITMENT SOURCE renamed from EMPLOYMENT HISTORY RECRUITMENT SOURCE CODE

Change to Data Element: Changed linked Attribute, Name

EMPLOYMENT HISTORY RECRUITMENT SOURCE_CODE

EMPLOYMENT HISTORY RECRUITMENT SOURCE

Attribute:

EMPLOYMENT HISTORY RECRUITMENT SOURCE_CODE

EMPLOYMENT HISTORY RECRUITMENT SOURCE

EMPLOYMENT HISTORY RECRUITMENT SOURCE renamed from EMPLOYMENT HISTORY RECRUITMENT SOURCE_CODE

RECRUITMENT SOURCE CODE

Change to Data Element: Changed linked Attribute, Name

- null

- Changed Name from Data_Dictionary.Data_Field_Notes.E.Emp.EMPLOYMENT_HISTORY_RECRUITMENT_SOURCE_CODE to Data_Dictionary.Data_Field_Notes.E.Emp.EMPLOYMENT_HISTORY_RECRUITMENT_SOURCE

FLEXIBLE WORKING PATTERN TYPE_ renamed from FLEXIBLE WORKING PATTERN TYPE CODE

Change to Data Element: Changed linked Attribute, Name

FLEXIBLE WORKING PATTERN TYPE CODE	FLEXIBLE WORKING PATTERN TYPE
FLEXIBLE WORKING PATTERN TYPE	renamed from FLEXIBLE WORKING PATTERN TYPE CODE
Attribute:	
FLEXIBLE WORK PATTERN TYPE CODE	
FLEXIBLE WORKING PATTERN TYPE	Change to Data Element: Changed linked Attribute, Name

- null
- Changed Name from Data_Dictionary.Data_Field_Notes.F.FLEXIBLE_WORKING_PATTERN_TYPE_CODE to Data_Dictionary.Data_Field_Notes.F.FLEXIBLE_WORKING_PATTERN_TYPE

FTE STABILITY RATE (ORGANISATION IN REPORTING PERIOD)

Change to Data Element: Changed Description

Format/Length:	max n3.max n2
NWDS ID:	SSWE
NWDS Field Name:	Stability Rate- WTE (Derived)
National Codes:	
Default Codes:	

Notes:

[FTE STABILITY RATE \(ORGANISATION IN REPORTING PERIOD\)](#) is the percentage of [EMPLOYEES](#) who remain employed within the [Organisation](#) within the [REPORTING PERIOD](#), based upon the [ASSIGNMENT CONTRACTED FULL TIME EQUIVALENT](#) of the assignments rather than the headcount.

For guidance on how to calculate this, see the [NHS Digital](#) website at: [National Workforce Data Set \(NWD\) guidance documents](#).

FTE STABILITY RATE (STAFF GROUP IN REPORTING PERIOD)

Change to Data Element: Changed Description

Format/Length:	max n3.max n2
NWDS ID:	SSWE
NWDS Field Name:	Stability Rate- WTE (Derived)
National Codes:	
Default Codes:	

Notes:

[FTE STABILITY RATE \(STAFF GROUP IN REPORTING PERIOD\)](#) is the percentage of [EMPLOYEES](#) who remain employed within a [Staff Group](#) within the [Organisation](#) within the [REPORTING PERIOD](#), based upon the [ASSIGNMENT CONTRACTED FULL TIME EQUIVALENT](#) of the assignments rather than the headcount.

For guidance on how to calculate this, see the [NHS Digital](#) website at: [National Workforce Data Set \(NWD\) guidance documents](#).

HEADCOUNT (ORGANISATION CURRENT)

Change to Data Element: Changed Description

Format/Length: max n6
[NWDS](#) ID: SHED
[NWDS](#) Field Name: Headcount
National Codes:
Default Codes:

Notes:

[HEADCOUNT \(ORGANISATION CURRENT\)](#) is the total number of [EMPLOYEES](#) currently employed within the [Organisation](#) on the [REPORTING PERIOD END DATE](#).

[HEADCOUNT \(ORGANISATION CURRENT\)](#) is a count of the number of [EMPLOYEES](#) who have one or more [EMPLOYMENT CONTRACTS](#) with the [Organisation](#) where the:

- [EMPLOYMENT CONTRACT START DATE](#) is before or on the [REPORTING PERIOD END DATE](#)
- and
- [EMPLOYMENT CONTRACT END DATE](#) is on or after the [REPORTING PERIOD START DATE](#).

HEADCOUNT STABILITY RATE (ORGANISATION IN REPORTING PERIOD)

Change to Data Element: Changed Description

Format/Length:	max n3.max n2
NWDS ID:	SSHC
NWDS Field Name:	Stability Rate - Head Count (Derived)
National Codes:	
Default Codes:	

Notes:

[HEADCOUNT STABILITY RATE \(ORGANISATION IN REPORTING PERIOD\)](#) is the percentage of [EMPLOYEES](#) who remain employed within the [Organisation](#) within the [REPORTING PERIOD](#).

For guidance on how to calculate this, see the [NHS Digital](#) website at: [National Workforce Data Set \(NWD\) guidance documents](#).

HEADCOUNT TURNOVER RATE (FTE IN REPORTING PERIOD)

Change to Data Element: Changed Description

Format/Length:	max n3.max n2
NWDS ID:	STOR

[NWDS](#) Field Name: Turnover Rate- WTE (Derived)
National Codes:
Default Codes:

Notes:

[HEADCOUNT TURNOVER RATE \(FTE IN REPORTING PERIOD\)](#) is the percentage of [EMPLOYEES](#), based upon their [ASSIGNMENT CONTRACTED FULL TIME EQUIVALENT](#), leaving employment with the [Organisation](#) within the [REPORTING PERIOD](#).

For guidance on how to calculate this, see the [NHS Digital](#) website at: [National Workforce Data Set \(NWD\) guidance documents](#).

HEADCOUNT TURNOVER RATE (ORGANISATION IN REPORTING PERIOD)

Change to Data Element: Changed Description

Format/Length: max n3.max n2
[NWDS](#) ID: STUR
[NWDS](#) Field Name: Turnover Rate - Head Count (Derived)
National Codes:
Default Codes:

Notes:

[HEADCOUNT TURNOVER RATE \(ORGANISATION IN REPORTING PERIOD\)](#) is the percentage of [EMPLOYEES](#) leaving employment with the [Organisation](#) within the [REPORTING PERIOD](#).

For guidance on how to calculate this, see the [NHS Digital](#) website at: [National Workforce Data Set \(NWD\) guidance documents](#).

ORGANISATION TYPE (EMPLOYER) (RETIRED) renamed from **ORGANISATION TYPE (EMPLOYER)**

Change to Data Element: Changed linked Attribute, status to Retired, Name, Description

Format/Length: an2
[NWDS](#) ID: ORGT
[NWDS](#) Field Name: Employing Organisation Type
National Codes: See [ORGANISATION TYPE FOR WORKFORCE](#)
Default Codes:

Notes:

~~[ORGANISATION TYPE \(EMPLOYER\)](#) is the same as attribute [ORGANISATION TYPE FOR WORKFORCE](#). This item has been retired from the NHS Data Model and Dictionary.~~

The last live version of this item is available in the ?????? release of the NHS Data Model and Dictionary.

Access to this version can be obtained by emailing information.standards@nhs.net with "NHS Data Model and Dictionary - Archive Request" in the email subject line.

ORGANISATION TYPE (EMPLOYER) (RETIRED)_ renamed from ORGANISATION TYPE (EMPLOYER)

Change to Data Element: Changed linked Attribute, status to Retired, Name, Description

ORGANISATION TYPE (EMPLOYER)

Attribute:

[ORGANISATION TYPE FOR WORKFORCE](#)

ORGANISATION TYPE (EMPLOYER) (RETIRED)_ renamed from ORGANISATION TYPE (EMPLOYER)

Change to Data Element: Changed linked Attribute, status to Retired, Name, Description

- null
- Retired ORGANISATION TYPE (EMPLOYER)
- Changed Name from Data_Dictionary.Data_Field_Notes.O.Org.ORGANISATION_TYPE_(EMPLOYER) to Retired.Data_Dictionary.Data_Field_Notes.O.ORGANISATION_TYPE_(EMPLOYER)
- Changed Description

PAYSCALE CODE

Change to Data Element: Changed Description

Format/Length:	an4
NWDS ID:	GRCD
NWDS Field Name:	Payscale Code
ESR Field Name:	Grade Scale Code
National Codes:	PAYSCALE CODE
National Codes:	
Default Codes:	

Notes:

[PAYSCALE CODE](#) is the same as attribute [PAYSCALE CODE](#).

PAYSCALE SPINE POINT_ renamed from PAYSCALE SPINE POINT CODE

Change to Data Element: Changed linked Attribute, Name, Description

Format/Length:	an2
NWDS ID:	GRSP
NWDS Field Name:	Incremental Point
ESR Field Name:	Grade Step
National Codes:	See PAYSCALE SPINE POINT CODE
National Codes:	
Default Codes:	

Notes:

~~[PAYSCALE SPINE POINT CODE](#) is the same as attribute [PAYSCALE SPINE POINT CODE](#).~~ [PAYSCALE SPINE POINT](#) is the same as attribute [PAYSCALE SPINE POINT](#).

~~[PAYSCALE SPINE POINT CODE](#) is the point within a [PAYSCALE](#) that has been reached by an [EMPLOYEE](#) for a [POSITION](#).~~ [PAYSCALE SPINE POINT](#) is the point within a [PAYSCALE](#) that has been reached by an [EMPLOYEE](#) for a [POSITION](#).

PAYSCALE SPINE POINT_ renamed from PAYSCALE SPINE POINT CODE

Change to Data Element: Changed linked Attribute, Name, Description

PAYSCALE SPINE POINT CODE PAYSCALE SPINE POINT	PAYSCALE SPINE POINT_ renamed from PAYSCALE SPINE POINT CODE
Attribute:	
PAYSCALE SPINE POINT CODE	Change to Data Element: Changed linked Attribute, Name, Description
PAYSCALE SPINE POINT	
• null	
• Changed Name from Data_Dictionary.Data_Field_Notes.P.Pay.PAYSCALE_SPINE_POINT_CODE to Data_Dictionary.Data_Field_Notes.P.Pay.PAYSCALE_SPINE_POINT	
• Changed Description	

POSITION ROTA PATTERN TYPE_ renamed from POSITION ROTA PATTERN CODE

Change to Data Element: Changed linked Attribute, Name

POSITION ROTA PATTERN CODE POSITION ROTA PATTERN TYPE	POSITION ROTA PATTERN TYPE__ renamed from POSITION ROTA PATTERN CODE
Attribute:	
POSITION ROTA PATTERN CODE	Change to Data Element: Changed linked Attribute, Name
POSITION ROTA PATTERN TYPE	
• null	
• Changed Name from Data_Dictionary.Data_Field_Notes.P.Po.POSITION_ROTA_PATTERN_CODE to Data_Dictionary.Data_Field_Notes.P.Po.POSITION_ROTA_PATTERN_TYPE	

POSITION SHIFT TYPE_ renamed from POSITION SHIFT TYPE CODE

Change to Data Element: Changed linked Attribute, Name

POSITION SHIFT TYPE CODE POSITION SHIFT TYPE	POSITION SHIFT TYPE_ renamed from POSITION SHIFT TYPE CODE
Attribute:	Change to Data Element: Changed linked Attribute, Name
POSITION SHIFT TYPE CODE	null
POSITION SHIFT TYPE	Changed Name from
	Data_Dictionary.Data_Field_Notes.P.Po.POSITION_SHIFT_TYPE_CODE to
	Data_Dictionary.Data_Field_Notes.P.Po.POSITION_SHIFT_TYPE

POSITION STATUS_ renamed from POSITION STATUS CODE

Change to Data Element: Changed linked Attribute, Name

POSITION STATUS CODE POSITION STATUS	POSITION STATUS_ renamed from POSITION STATUS CODE
Attribute:	Change to Data Element: Changed linked Attribute, Name
POSITION STATUS CODE	null
POSITION STATUS	Changed Name from
	Data_Dictionary.Data_Field_Notes.P.Po.POSITION_STATUS_CODE to
	Data_Dictionary.Data_Field_Notes.P.Po.POSITION_STATUS

POSITION VACANCY STATUS_ renamed from POSITION VACANCY STATUS CODE

Change to Data Element: Changed linked Attribute, Name

POSITION VACANCY STATUS CODE
POSITION VACANCY STATUS

Attribute:

[POSITION VACANCY STATUS CODE](#)

[POSITION VACANCY STATUS](#)

POSITION VACANCY STATUS_ renamed from POSITION VACANCY STATUS CODE

Change to Data Element: Changed linked Attribute, Name

- null
- Changed Name from Data_Dictionary.Data_Field_Notes.P.Po.POSITION_VACANCY_STATUS_CODE to Data_Dictionary.Data_Field_Notes.P.Po.POSITION_VACANCY_STATUS

PROFESSIONAL REGISTRATION TYPE_ renamed from PROFESSIONAL REGISTRATION TYPE CODE

Change to Data Element: Changed linked Attribute, Name

PROFESSIONAL REGISTRATION TYPE CODE
PROFESSIONAL REGISTRATION TYPE

Attribute:

[PROFESSIONAL REGISTRATION TYPE](#)

PROFESSIONAL REGISTRATION TYPE renamed from PROFESSIONAL REGISTRATION TYPE CODE

Change to Data Element: Changed

linked Attribute, Name

- null
- Changed Name from Data_Dictionary.Data_Field_Notes.P.Prod.PROFESSIONAL_REGISTRATION_TYPE_CODE to Data_Dictionary.Data_Field_Notes.P.Prod.PROFESSIONAL_REGISTRATION_TYPE

PROFESSIONAL REGISTRATION TYPE (POSITION)_ renamed from PROFESSIONAL REGISTRATION TYPE CODE (POSITION)

Change to Data Element: Changed Name

- Changed Name from Data_Dictionary.Data_Field_Notes.P.Prod.PROFESSIONAL_REGISTRATION_TYPE_CODE_(POSITION) to Data_Dictionary.Data_Field_Notes.P.Prod.PROFESSIONAL_REGISTRATION_TYPE_(POSITION)

QUALIFICATION PLANNED COMPLETION DATE CHANGE REASON (CCT)

Change to Data Element: Changed Description

Format/Length: an2
[NWDS ID](#): ESPM
[NWDS Field Name](#): Reason for Moving CCST Date
~~National Codes:~~
National Codes: [TRAINING ACTIVITY COMPLETION DATE CHANGE REASON](#)
Default Codes: 99 - Original Date

Notes:

~~[QUALIFICATION PLANNED COMPLETION DATE CHANGE REASON \(CCT\)](#) is the same as attribute [TRAINING ACTIVITY COMPLETION DATE CHANGE REASON](#) where the [QUALIFICATION TYPE CODE](#) is National Code 'Certificate of Completion of Training (CCT) - Specialist Training'. [QUALIFICATION PLANNED COMPLETION DATE CHANGE REASON \(CCT\)](#) is the same as attribute [TRAINING ACTIVITY COMPLETION DATE CHANGE REASON](#) where the [QUALIFICATION TYPE](#) is National Code 'Certificate of Completion of Training (CCT) - Specialist Training'.~~

QUALIFICATION SUBJECT AREA_ renamed from QUALIFICATION SUBJECT AREA CODE

Change to Data Element: Changed linked Attribute, Name

~~QUALIFICATION SUBJECT AREA CODE~~
QUALIFICATION SUBJECT AREA

Attribute:

~~QUALIFICATION SUBJECT AREA CODE~~

QUALIFICATION SUBJECT AREA

QUALIFICATION SUBJECT AREA__ renamed from QUALIFICATION SUBJECT AREA CODE

Change to Data Element: Changed linked Attribute, Name

null

- Changed Name from Data_Dictionary.Data_Field_Notes.Q.QUALIFICATION_SUBJECT_AREA_CODE to Data_Dictionary.Data_Field_Notes.Q.QUALIFICATION_SUBJECT_AREA

QUALIFICATION TYPE_ renamed from QUALIFICATION TYPE CODE

Change to Data Element: Changed linked Attribute, Name

~~QUALIFICATION TYPE CODE~~
QUALIFICATION TYPE

Attribute:

~~QUALIFICATION TYPE CODE~~

QUALIFICATION TYPE

QUALIFICATION TYPE_ renamed from QUALIFICATION TYPE CODE

Change to Data Element: Changed linked Attribute, Name

null

Changed Name from

Data_Dictionary.Data_Field_Notes.Q.QUALIFICATION_TYPE_CODE to Data_Dictionary.Data_Field_Notes.Q.QUALIFICATION_TYPE

TRAINING ACTIVITY ASSESSOR TYPE_ renamed from TRAINING ACTIVITY ASSESSOR TYPE CODE

Change to Data Element: Changed linked Attribute, Name

~~TRAINING ACTIVITY ASSESSOR TYPE CODE~~
TRAINING ACTIVITY ASSESSOR TYPE

Attribute:

~~TRAINING ACTIVITY ASSESSOR TYPE CODE~~

TRAINING ACTIVITY ASSESSOR TYPE

TRAINING ACTIVITY ASSESSOR TYPE renamed from TRAINING ACTIVITY ASSESSOR TYPE CODE

Change to Data Element: Changed linked Attribute, Name

- null
- Changed Name from Data_Dictionary.Data_Field_Notes.T.Tr.TRAINING_ACTIVITY_ASSESSOR_TYPE_CODE to Data_Dictionary.Data_Field_Notes.T.Tr.TRAINING_ACTIVITY_ASSESSOR_TYPE

TRAINING ACTIVITY DELIVERY METHOD_ renamed from TRAINING ACTIVITY DELIVERY METHOD TYPE CODE

Change to Data Element: Changed linked Attribute, Name

~~TRAINING ACTIVITY DELIVERY METHOD TYPE CODE~~
TRAINING ACTIVITY DELIVERY METHOD

Attribute:

~~TRAINING ACTIVITY DELIVERY METHOD TYPE CODE~~

TRAINING ACTIVITY DELIVERY METHOD

TRAINING ACTIVITY DELIVERY METHOD__ renamed from TRAINING ACTIVITY DELIVERY METHOD TYPE CODE

Change to Data Element: Changed linked Attribute, Name

linked Attribute, Name

- null
- Changed Name from Data_Dictionary.Data_Field_Notes.T.Tr.TRAINING_ACTIVITY_DELIVERY_METHOD_TYPE_CODE to Data_Dictionary.Data_Field_Notes.T.Tr.TRAINING_ACTIVITY_DELIVERY_METHOD

TRAINING ACTIVITY TYPE_ renamed from TRAINING ACTIVITY TYPE CODE

Change to Data Element: Changed linked Attribute, Name

Attribute:	
<u>TRAINING_ACTIVITY_TYPE_CODE</u>	TRAINING_ACTIVITY_TYPE_ renamed from TRAINING_ACTIVITY_TYPE_CODE
<u>TRAINING_ACTIVITY_TYPE</u>	Change to Data Element: Changed linked Attribute, Name
<u>TRAINING_ACTIVITY_TYPE</u>	null
	Changed Name from to
• Data_Dictionary.Data_Field_Notes.T.Tr.TRAINING_ACTIVITY_TYPE_CODE	
Data_Dictionary.Data_Field_Notes.T.Tr.TRAINING_ACTIVITY_TYPE	

For enquiries about this Change Request, please email information.standards@nhs.net

