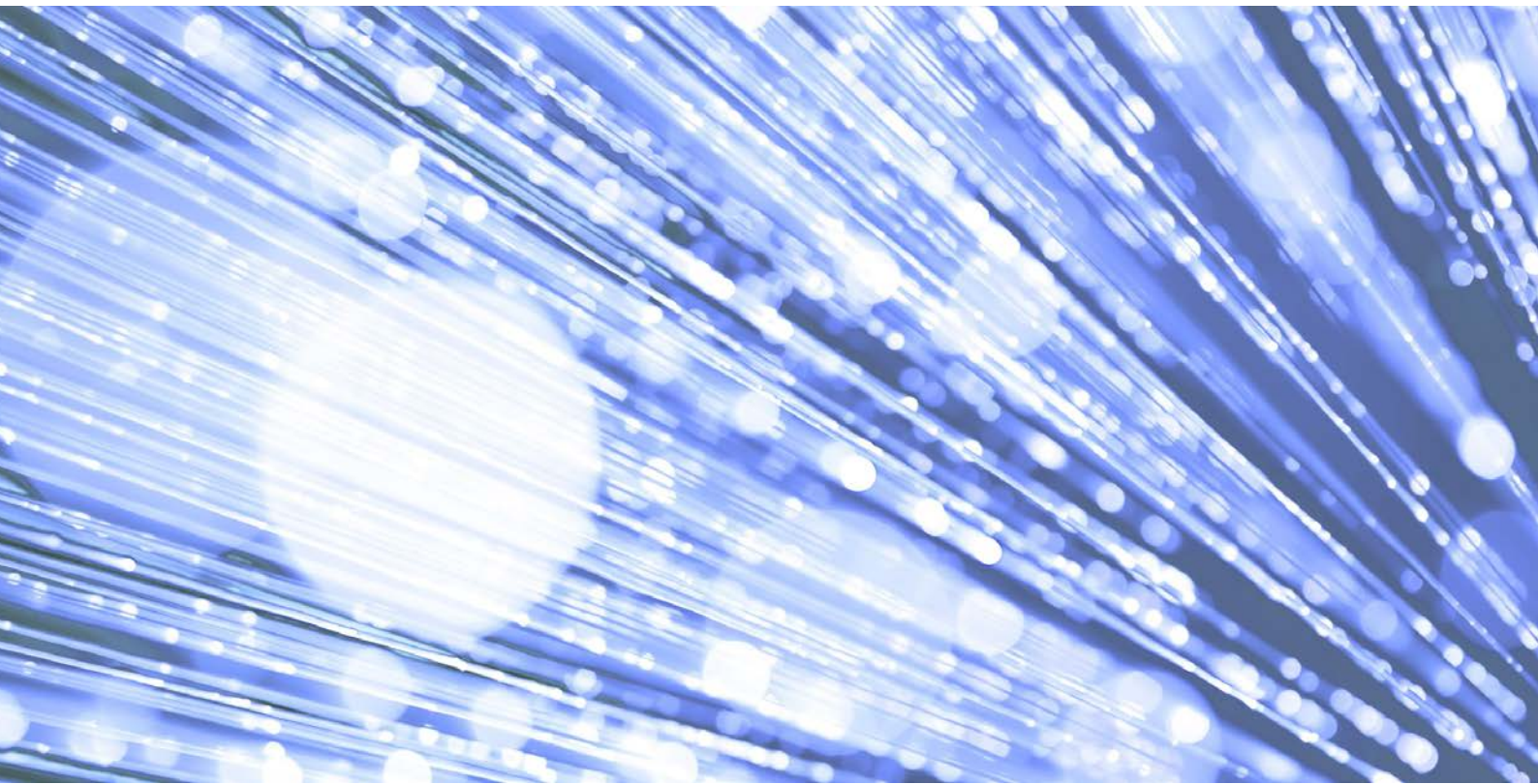


# Mental Health Services Data Set v3.0 Change Specification

Published 28 September 2017



**Information and technology**  
**for better health and care**

# Data Coordination Board

This information standard (DCB0011) has been approved for publication by the Department of Health under [section 250 of the Health and Social Care Act 2012](#).

Assurance that this information standard meets the requirements of the Act and is appropriate for the use specified in the specification document has been provided by the Data Coordination Board (DCB), a sub-group of the Digital Delivery Board.

This information standard comprises the following documents:

- Requirements Specification
- Change Specification
- Data Set Specification
- Implementation Guidance.

An Information Standards Notice (DCB0011 Amd 82/2016) has been issued as a notification of use and implementation timescales. Please read this alongside the documents for the standard.

The controlled versions of these documents can be found on the [NHS Digital website](#). Any copies held outside of that area, in whatever format (e.g. paper, email attachment), are considered to have passed out of control and should be checked for currency and validity.

Date of publication: 28 September 2017



This information is licensed under the Open Government Licence v3.0. To view this licence, visit <http://www.nationalarchives.gov.uk/doc/open-government-licence/> or write to the Information Policy Team, The National Archives, Kew, Richmond, Surrey, TW9 4DU.

## **Glossary of Terms**

A full Glossary of Terms for the MHSDS Information Standard can be found within the MHSDS Requirements Specification.

---

# Contents

---

<b>1. Overview</b>	<b>5</b>
1.1. Summary	5
1.2. Supporting products	8
1.3. Related standards	9
<b>2. Change specification</b>	<b>10</b>
2.1. Reason for release	10
2.2. Justification for changes	10
2.3. Change specification	16
2.4. Change Control	26

---

# 1. Overview

## 1.1. Summary

Standard	
Standard Number	DCB0011
Standard Title	Mental Health Services Data Set
Description	<p>The MHSDS is a patient level, output based, secondary uses data set which aims to deliver robust, comprehensive, nationally consistent and comparable person-based information for children, young people and adults who are in contact with mental health services. As a secondary uses data set it re-uses clinical and operational data for purposes other than direct patient care. It defines the data items, definitions and associated value sets extracted or derived from local information systems.</p> <p><b><u>In Scope</u></b></p> <p>All activity relating to people who receive specialist secondary mental health care services and have, or are thought to have, a mental illness; or who receive specialist secondary learning disabilities or autism spectrum disorder services and have, or are thought to have, a learning disability or autism spectrum disorder is within scope of the MHSDS.</p> <p>The scope of the data set requires record level data submission from services as follows.</p> <p>For each person:</p> <ul style="list-style-type: none"> <li>• if the person is wholly funded by the NHS – data submission for that person is mandatory;</li> <li>• if the person is partially funded by the NHS – data submission for that person is mandatory;</li> <li>• if the person is wholly funded by any means that is not NHS – data submission is optional.</li> </ul> <p>It may be that the person has:</p> <ul style="list-style-type: none"> <li>• A mental illness</li> <li>• A learning disability</li> <li>• An autism spectrum disorder</li> <li>• Any combination of mental health, learning disability or autism spectrum disorder needs.</li> </ul> <p>Children and adolescents (including those with a learning disability and/or autism spectrum disorder) under the age of 18 should also be included where they are in receipt of care from a specialist secondary mental health, learning disabilities or autism spectrum disorder service or an early intervention service. Children and young people in receipt of psychological therapies covered under the CYP (Children and Young People's) IAPT (Improving Access to Psychological Therapies) programme are included within the scope of this standard.</p> <p>The standard will be used across a range of service types, which are likely to include:</p> <ul style="list-style-type: none"> <li>• Acute services</li> <li>• Long-term conditions services</li> </ul>

	<ul style="list-style-type: none"> <li>• Hospitals for mental health/learning disabilities</li> <li>• Rehabilitation services</li> <li>• Care homes with nursing</li> <li>• Care homes without nursing</li> <li>• Community services offering secondary care to children.</li> </ul> <p><b><u>Out of Scope</u></b></p> <p>The following areas are currently out of scope and should not be included within MHSDS:</p> <ul style="list-style-type: none"> <li>• Any patient receiving treatment through a specialist mental health, learning disabilities or autism spectrum disorder care provider but is not thought to have a mental illness, learning disability or autism spectrum disorder e.g. <ul style="list-style-type: none"> <li>○ Smoking cessation services</li> <li>○ Addictions and substance misuse services</li> <li>○ Some alternative therapy services</li> <li>○ Some counselling services.</li> </ul> </li> <li>• Mental health, learning disabilities, and autism spectrum disorder services provided only at a primary care level (such as within general practices or adult IAPT).</li> </ul>
Applies to	<p><b><u>Patients</u></b></p> <p>Any patients (adult, adolescent or child) who receive specialist secondary mental health care services and have, or are thought to have a mental illness, or who receive specialist secondary learning disabilities or autism spectrum disorder services and are thought to have a learning disability or autism spectrum disorder.</p> <p>Where a service is wholly or partially made up of NHS funded patients, data set submission is mandatory. Where the service is wholly made up of non-NHS patients data set submission is optional.</p> <p><b><u>Organisation and Service Types</u></b></p> <p>The standard will be used across the range of service providers and organisations that provide specialist secondary mental health and/or learning disabilities and/or autism spectrum disorder services (irrespective of funding arrangements) including:</p> <ul style="list-style-type: none"> <li>• NHS Mental Health Trusts</li> <li>• NHS Learning Disabilities Trusts</li> <li>• NHS Acute Trusts<sup>1</sup></li> <li>• NHS Care Trusts<sup>1</sup></li> <li>• Independent sector providers offering a service model that includes NHS funded patients<sup>1</sup></li> <li>• Any qualified provider offering specialist secondary mental health, learning disabilities or autism spectrum disorder services</li> <li>• Community services offering secondary care to children</li> </ul>

<sup>1</sup> Where there is direct provision of specialist secondary mental health, learning disabilities, or autism spectrum disorder services

	<p><b><u>Departments</u></b></p> <p>The standard must be read and used by all heads of mental health, learning disabilities and autism spectrum disorder services, and other clinical and support services, including community services, that have an active involvement in delivering secondary mental health care.</p> <p><b><u>Professionals</u></b></p> <p>The standard applies to all professions working in or supporting mental health, learning disabilities and autism spectrum disorder services and other services offering secondary mental health care including community services. The MHSDS Technical Output Specification (TOS) provides an indication of the care professionals that are within the scope of this information standard (see MHS901 Staff Details table).</p> <p><b><u>IT Systems</u></b></p> <p>The standard predominantly, but not exclusively, relates to clinical systems designed to support mental health, learning disabilities and autism spectrum disorder services, Patient Administration Systems (PAS) and Electronic Patient Records (EPR).</p>
<b>Release</b>	
Release Number	Amd 82/2016
Release Title	Version 3.0
Description	<p>An ongoing requirement exists to update the Mental Health Services Data Set (MHSDS) in order to ensure the data set remains 'fit for purpose'.</p> <p>The changes included in this release relate to new government policy initiatives, resolution of issues within the current data collection, and inclusion of other key stakeholder requirements as follows:</p> <ul style="list-style-type: none"> <li>• Changes to the data set to enable reporting on access and waiting times for various identified mental health and autism spectrum disorder pathways</li> <li>• Enhanced data collection in support of the transition between children and young people's and adult mental health services</li> <li>• Enhanced data collection for patients with a learning disability supported in the community</li> <li>• Enhanced data collection in support of timely diagnosis of autism spectrum disorder</li> <li>• Inclusion of specialised commissioning activities to reduce duplication with other data flows such as the distinct specialised commissioning mental health data collection</li> <li>• Inclusion of Individual Placement and Support service type</li> <li>• Change to support understanding of delayed transfers of care</li> <li>• Minor maintenance changes to respond to issues raised by the NHS Data Model and Dictionary</li> <li>• Operationalisation of fundamental standards:</li> </ul>

	<ul style="list-style-type: none"> <li>○ <a href="#">DCB2094</a><sup>2</sup> Sexual Orientation Monitoring (SOM)</li> <li>○ <a href="#">SCCI0090</a><sup>3</sup> Health and Social Care Organisational Reference Data Set (ODS)</li> <li>● Further development of the data set in support of the <a href="#">SCCI0034</a><sup>4</sup> SNOMED CT standard</li> </ul>
Implementation Completion Date	<p><b><u>System Conformance</u></b></p> <p>From 1 April 2018 mental health systems <b>MUST</b> be fully conformant with this standard.</p> <p><b><u>Health and Care Organisations</u></b></p> <p>From 1 April 2018 providers of mental health, learning disabilities and autism spectrum disorder services as defined in this Information Standard <b>MUST</b> be able to collect the information as defined in the Technical Output Specification for local use.</p> <p>From 1 June 2018, providers of NHS funded mental health, learning disabilities and autism spectrum disorder services <b>MUST</b> begin submitting MHSDS submissions in accordance with this standard.</p>
Full Conformance Date	22 June 2018 - This is the date the April refresh MHSDS v3.0 submission window closes. Providers must be able to make a valid submission prior to this date, which will include data collected from 1 <sup>st</sup> April 2018.

## 1.2. Supporting products

This document should be read in conjunction with the following:

Ref #	Title
1	<a href="#">MHSDS Requirements Specification</a>
2	<a href="#">MHSDS Technical Output Specification</a>
3	<a href="#">MHSDS Implementation Guidance</a>
4	<a href="#">MHSDS User Guidance</a>
5	<a href="#">MHSDS Technical Guidance</a>
6	<a href="#">NHS Data Model and Dictionary Change Request (CR1610)</a>

Please see section 2.4 of the *Implementation Guidance* for a full list and descriptions of each related document listed above.

<sup>2</sup> DCB2094 - <http://www.content.digital.nhs.uk/isce/publication/sexual-orientation-monitoring>

<sup>3</sup> SCCI0090 - <http://content.digital.nhs.uk/isce/publication/scci0090>

<sup>4</sup> SCCI0034 - <http://content.digital.nhs.uk/isce/publication/scci0034>

## 1.3. Related standards

Reference	Title
SCCI1069	Community Services Data Set (CSDS)
ISB1513	Maternity Services Data Set (MSDS)
SCCI2007	Assuring Transformation
DCB1605	Accessible Information
ISB 0149-02	NHS Number for Secondary Care
ISB 0149-01	NHS Number for General Practice
ISB SCCI0034	SNOMED CT
SCCI0021	International Classification of Diseases
ISB 0092	Commissioning Data Sets (CDS)
SCCI0090	Health and Social Care Organisation Reference Data
DCB2094	Sexual Orientation Monitoring
SCCI0092-2062	Emergency Care Data Set
ISB 1553	Read Clinical Terms Version 2 (Deprecated) <sup>i</sup>
ISB 1552	Read Clinical Terms Version 3 (Deprecated) <sup>ii</sup>

## 2. Change specification

### 2.1. Reason for release

The MHSDS applies to, and is used by, a wide range of stakeholders. The content of the data set is determined from consultation with these stakeholders which include various sections of Department of Health policy, NHS England (NHSE), Care Quality Commission, service providers and commissioners.

Changes are required to the MHSDS v2.0 to ensure that the data set remains 'fit for purpose'. The following amendments are required in response to changes in clinical practice or coding, changes to policy requirements, changes to the NHS Data Model and Dictionary in light of other Information Standards, and requests for amendments by care providers or system suppliers.

A maintenance strategy has been agreed with the Mental Health Data & Information Programme Board for NHS Digital to facilitate annual updates of the data set. This release represents the second annual update in this development cycle. Please see section 6 of the Implementation Guidance for full details of the maintenance strategy.

The remainder of this document details the reasons for the changes (2.2 Justification for changes) and goes on to summarise changes individually (2.3 Change specification).

## 2.2. Justification for changes

### 2.2.1. Access and waiting times

In order to meet the ambitions set out in Achieving Better Access to Mental Health Services by 2020 and [The Five Year Forward View for Mental Health](#) (MHFYFV)<sup>5</sup>, NHS Digital are working with the mental health access and waiting time standards programme to ensure that agreed methodologies can be reported from the MHSDS with respect to a number of care pathways:

- Adult acute mental health
- CYP mental health
- CYP eating disorders
- Early intervention in psychosis (EIP)
- Perinatal mental health
- Urgent and emergency mental health

**Aims:** Enable a set of pre-defined metrics to be measured on a consistent basis nationally.

**Benefits:** Commissioners will be able to monitor the effective implementation of defined care pathways, specifically access and waiting times.

---

<sup>5</sup> <https://www.england.nhs.uk/five-year-forward-view/>

**Impact of not progressing:** National programmes associated with a number of mental health care pathway standards scheduled for implementation by 2020 will not benefit from baseline reporting and the ability to set ongoing trajectories.

### 2.2.2. Children and young people's mental health

The report of the CYP Mental Health and Wellbeing Taskforce, [Future in Mind](#)<sup>6</sup>, recommended joint working and shared practice between services to promote continuity of care during transition between services.

**Aims:** Enhance data collection with respect to the patient's transition from children's mental health services to adult mental health services.

**Benefits:** Enable monitoring of the provider response to the need for joint working and shared practice across services during patient transition.

**Impact of not progressing:**

Reporting on activity expected during a transition between services will not be made available in order to support the ongoing assessment of the implementation of this policy aim.

### 2.2.3. Learning disability care services

The MHSDS expanded in scope in November 2014 to include patients with, or suspected to have, a learning disability. MHSDS v3.0 will further evolve in support of [Building the right support](#)<sup>7</sup>, published in October 2015, which details plans to move patients from inpatient facilities to the community, and sets out the range of support that should be in place for this cohort of patients by March 2019.

**Aims:** Ensure effective data collection with respect to patients cared for in a community context.

**Benefits:** Enable effective monitoring of the provider response to requirements falling out of 'Winterbourne View' including the requirement to provide care in a community context where applicable as opposed to long term inpatient facilities.

**Impact of not progressing:**

Enhancements to MHSDS required in support of the transformations described in 'Building the right support' will not be made available to the learning disabilities programme.

---

<sup>6</sup>

[https://www.gov.uk/government/uploads/system/uploads/attachment\\_data/file/414024/Childrens\\_Mental\\_Health.pdf](https://www.gov.uk/government/uploads/system/uploads/attachment_data/file/414024/Childrens_Mental_Health.pdf)

<sup>7</sup> <https://www.england.nhs.uk/learning-disabilities/natplan/>

## 2.2.4. Autism care services

In 2014 the government published [Think Autism: An update to the government adult autism strategy](#)<sup>8</sup> which led to an [update on progress](#) in January 2016. This work led to agreement between NHS England and the Department of Health to ensure that a number of autism indicators can be derived from the MHSDS and published, following a paper that NHS England submitted to the Cross Government Autism Programme Board in June 2016.

**Aims:** Evidence improvements in the waiting time for a diagnosis of autism.

**Benefits:** Commissioners will be able to monitor the effective implementation of local autism care pathways.

**Impact of not progressing:** Commissioners will remain unable to monitor waiting times for autism assessments and subsequent diagnoses.

## 2.2.5. Specialised Commissioning

Historically MHSDS has not provided adequate data to specialised service commissioners to support activities such as service redesign and payment and currencies. As a result NHS England has collected the required data via the bespoke Specialised Commissioning Mental Health collection. The inclusion of specialised commissioning activities in MHSDS v3.0 will allow the Specialised Commissioning Mental Health Collection to be retired.

The specialist commissioning mental health collection will be retired when:

- All 'in-scope' data items that are required to be moved across from the specialist commissioning mental health collection are available in MHSDS. This is expected to be the case as a result of changes included in MHSDS v3.0.
- Responsible commissioner can be effectively established from the MHSDS data.
- Data quality criteria are agreed and met.

**Aims:** To consolidate data collection requirements within the MHSDS, enabling future retirement of the current specialised commissioning collection.

**Benefits:** Support day to day specialised commissioning activities through MHSDS. Reduced duplication and burden of data submission.

**Impact of not progressing:**

Health care providers will continue to submit both MHSDS and the Specialised Commissioning Data Set and burden will not be reduced.

## 2.2.6. Referral activity

There is a MHFYFV commitment to doubling access to individual placement and support (IPS), enabling people with severe mental illness (SMI) to find and retain employment. Requirement has also been identified to uplift the Source of Referral for Mental Health code list to include new services.

---

<sup>8</sup> <https://www.gov.uk/government/publications/think-autism-an-update-to-the-government-adult-autism-strategy>

**Aims:** Ensure the referral element of the data set contains adequate options for data submission to reflect current clinical practice.

**Benefits:** The data set will continue to support robust, up to date reporting.

**Impact of not progressing:**

Support will not be available via MHSDS for the ongoing assessment of the implementation of the individual placement and support policy aim.

Data quality will suffer due to out of date Source of Referral for Mental Health recording.

### 2.2.7. Delayed Transfers of Care

‘Mental Health Delayed Discharge Periods’ and the associated ‘Mental Health Delayed Discharge Reason’ categories are currently required for submission in both the NHS Digital Mental Health Services Data Set (MHSDS) and the NHS England Delayed Transfers of Care Monthly Situation Report (SITREP) collected through Unify.

Changes were made in MHSDS v2.0 to revise the categories used in mental health from April 2017, with a long term view to transferring official statistics to the MHSDS after a period of transition. The revised categories are fit for purpose for mental health.

In order to fully transition mental health delay reporting from SITREP to the MHSDS, a requirement has been received to identify the responsible local authority for a social care attributed delay.

**Aims:** To consolidate data collection requirements within the MHSDS, resulting in the removal of the requirement for mental health delays to be submitted to the existing (SITREP) collection

**Benefits:** Fully transition official statistics for delayed transfers of care for mental health care to the MHSDS, using the revised categories.

Reduced duplication and burden.

**Impact of not progressing:** Health care providers will continue to submit both MHSDS and the SITREP collection and burden will not be reduced.

### 2.2.8. Maintenance issues

A number of recommendations and issues raised during previous assurance remain outstanding which require addressing, such as to align with NHS Data Model and Dictionary editorial principles. The outstanding items have been reviewed by the developers and the NHS Data Model and Dictionary and a number of associated changes have been prioritised for this release. Other issues have not been included in this release due to conflicting timescales or dependency on other information standards and will be considered in a future release.

**Aims:** Ensure the data set remains ‘fit for purpose’ through solving issues identified through implementation of previous versions.

**Benefits:** The data set will continue to support robust, up to date reporting.

**Impact of not progressing:**

Identified issues will not be resolved. Over time this approach would ensure the data set could no longer be considered 'fit for purpose'.

## 2.2.9. Links with other standards

The standards assurance process allows for the development of 'Fundamental Standards' which inform other standards. The development of these standards is fully assured, allowing for easy transition into dependant standards such as MHSDS. The aims, benefits and impacts relating to these standards are outlined in their respective Information Standard documentation.

There is a requirement to implement two recent standards through MHSDS:

- [Sexual Orientation Monitoring \(SOM\) DCB2094](#)<sup>9</sup>
- [Health and Social Care Organisation Reference Data \(ODS\) SCCI0090](#)<sup>10</sup>

The incorporation of changes in line with SCCI0090 impacts on a number of Organisation Code data items across many tables. Whilst the number of changes associated is high, the implementation of these changes individually does not come with significant burden.

### 2.2.9.1. SNOMED CT

[SNOMED CT \(SCCI0034\)](#)<sup>11</sup> is mandated for systems used for the direct management of care of an individual within secondary care, including mental health services, by April 2020. MHSDS aims to support this standard by allowing the flow of information via SNOMED CT within the data set.

MHSDS has been further developed in v3.0 in support of this aim.

#### 1. Social and Personal Circumstances table

Records flowed about individuals in scope of MHSDS include information that describes the person, rather than care that is attributable to a person. This information is intended to support fair and equitable treatment of the individual, such as protected characteristics information, and also provides contextual information to support elements of national analysis, such as the looked after child indicator. The current method for flowing this data is via the MHS001 MPI and associated tables, which typically flow the data via traditional NHS Data Model and Dictionary Code lists.

MHSDS v3.0 includes a brand new table, MHS0011 Social and Personal Circumstances which, subject to guidance, will allow the flow of MHS001 MPI data items and associated tables' data items in SNOMED CT format. The new table will allow social and personal information in support of the Sexual Orientation Monitoring Standard to flow. The following data will be required to flow via this table:

- Religious or other belief system affiliation group code

---

<sup>9</sup> <http://content.digital.nhs.uk/isce/publication/sexual-orientation-monitoring>

<sup>10</sup> <http://content.digital.nhs.uk/isce/publication/scci0090>

<sup>11</sup> <http://content.digital.nhs.uk/isce/publication/scci0034>

- Person stated sexual orientation code

Further guidance in relation to this new table can be found in the [MHSDS v3.0 User Guidance](#)<sup>12</sup>.

## 2. Coded Procedure and Procedure Status

The Care Activity and Indirect Activity tables currently allow for flow of coded procedures via Read (v2 and CTV3) and SNOMED CT using two data items: Procedure Scheme in Use and Coded Procedure (Clinical Terminology). There is also a requirement for MHSDS v3.0 to allow for flow of qualifier information to indicate where a proposed intervention (procedure) has been offered, declined, started or completed.

MHSDS v3.0 will remove the ability to flow procedures using Read (v2 and CTV3), leaving SNOMED CT as the only scheme now accepted for procedures. The two existing data items will be replaced with a single data item: Coded Procedure and Procedure Status (SNOMED CT). This new item will allow the following to flow:

- Procedure and qualifier – as a concatenated SNOMED CT expression
- Procedure only – in the same manner as MHSDS v2.0

Examples:

### *Procedure and qualifier*

To flow a procedure and qualifier, three pieces of information are required:

- The procedure code (for example: 718026005 Cognitive behaviour therapy for psychosis)
- The qualifier code (for example: 410527000 Offered)
- A code that links the procedure and the qualifier (in this case: 408730004 Procedure context)

The three codes are concatenated for submission as follows:

718026005:408730004=410527000

(Cognitive behaviour therapy for psychosis:Procedure context=Offered)

### *Procedure only*

Procedure only flows as a single code:

718026005

(Cognitive behaviour therapy for psychosis)

I.e. no change from the current method in MHSDS v2.0 of flowing the Coded Procedure (clinical Terminology) data item.

NHS Digital will continue to investigate appropriate additional use of SNOMED CT within the data set during development of future versions.

---

<sup>12</sup> <http://content.digital.nhs.uk/mhsds/spec>

## 2.3. Change specification

Individual changes are presented in order of the tables they apply to so that stakeholders can easily identify the changes that are needed. To understand the individual changes in the context of the relevant justification, please see the final column in the change specification table – Change category, which clearly identifies the relevant headings in the justification section of this document.

Please note Section 2.2.9 above. Whilst there are a significant number of changes in this list, many are associated with low burden, such as the change in naming convention of all organisation codes in response to the requirements of the SCCI0090 ODS standard.

Group/Table	Data Item Name	Item Type	Item Amend Type	Change details	Change category
MHS000Header	Organisation Code (Code of Provider)	Data item	Delete		Other standards - ODS
MHS000Header	Organisation Identifier (Code of Provider)	Data item	New		Other standards - ODS
MHS000Header	Organisation Code (Code of Submitting Organisation)	Data item	Delete		Other standards – ODS
MHS000Header	Organisation Identifier (Code of Submitting Organisation)	Data item	New		Other standards – ODS
MHS001MPI	Religious or Other Belief System Affiliation Group Code	Data item	Delete	Replace the NHS Data Model and Dictionary data item with the SNOMED subset equivalent to flow in the new MHS011Social and Personal Circumstances table	Other standards – SNOMED CT
MHS001MPI	Organisation Code (Local Patient Identifier)	Data item	Delete		Other standards – ODS
MHS001MPI	Organisation Identifier (Local Patient Identifier)	Data item	New		Other standards – ODS
MHS001MPI	Organisation Code (Educational Establishment)	Data item	Delete		Other standards – ODS
MHS001MPI	Organisation Identifier (Educational Establishment)	Data item	New		Other standards – ODS
MHS001MPI	Organisation Code (Residence Responsibility)	Data item	Delete		Other standards – ODS

Group/Table	Data Item Name	Item Type	Item Amend Type	Change details	Change category
MHS001MPI	Organisation Identifier (Residence of Responsibility)	Data item	New		Other standards – ODS
MHS002GP	Organisation Code (GP Practice Responsibility)	Data item	Delete		Other standards – ODS
MHS002GP	Organisation Identifier (GP Practice Responsibility)	Data item	New		Other standards – ODS
MHS004EmpStatus	Weekly Hours Worked	Data Item	Amendment	Amend wording of the National Code Definitions in line with the <a href="#">NHS Data Model and Dictionary</a>	Maintenance
MHS006MHCareCoord	Care Professional Service or Team Type Association (Mental Health)	Data Item	Amendment	Addition of new codes: A20 – Health Based Place of Safety Service D05 – Individual Placement and Support Service E04 – Enhanced/Intensive Support Service	<ul style="list-style-type: none"> <li>• Access and waiting times – Urgent and emergency care</li> <li>• Learning disability care services</li> <li>• Referral activity</li> </ul>
MHS008CarePlanType	Care Plan Type Code (Mental Health)	Data Item	Amendment	Modify data item name to Care Plan Type (Mental Health)  Addition of new codes: 14 – Child or Young Person's Mental Health Transition Plan	Children and young people's mental health
MHS008CarePlanType	Care Plan Creation Time	Data Item	New		Access and waiting times – Urgent and emergency care
MHS008CarePlanType	Care Plan Last Updated Time	Data Item	New		Access and waiting times – Urgent and emergency care
MHS009CarePlanAgreement	Care Plan Agreed Time	Data Item	New		Access and waiting times – Urgent and

Group/Table	Data Item Name	Item Type	Item Amend Type	Change details	Change category
					emergency care
MHS011SocPerCircumstances		Table	New	New table – MHS0011 Social and Personal Circumstances, to enable patient characteristics to be recorded in SNOMED CT.	Other standards – SNOMED CT
MHS011SocPerCircumstances	Local Patient Identifier (Extended)	Data Item	New		Other standards – SNOMED CT
MHS011SocPerCircumstances	Social and Personal Circumstance (SNOMED CT)	Data Item	New		<ul style="list-style-type: none"> <li>Other standards – Sexual Orientation Monitoring</li> <li>Other standards SNOMED CT</li> </ul>
MHS011SocPerCircumstances	Social and Personal Circumstance Recorded Date	Data Item	New		<ul style="list-style-type: none"> <li>Other standards – Sexual Orientation Monitoring</li> <li>Other standards – SNOMED CT</li> </ul>
MHS101Referral	Primary Reason for Referral (Mental Health)	Data Item	Amendment	Delete code: 17 – Neurodevelopmental Conditions Addition of new codes: 24 – Neurodevelopmental Conditions, excluding Autism Spectrum Disorder 25 – Suspected Autism Spectrum Disorder 26 – Diagnosed Autism Spectrum Disorder 27 – Preconception perinatal mental health concern	<ul style="list-style-type: none"> <li>Autism care services</li> <li>Access and waiting times – Perinatal</li> </ul>

Group/Table	Data Item Name	Item Type	Item Amend Type	Change details	Change category
MHS101Referral	Discharge Plan Creation Time	Data Item	New		Access and waiting times – Urgent and emergency care
MHS101Referral	Discharge Plan Last Updated Time	Data Item	New		Access and waiting times – Urgent and emergency care
MHS101Referral	Organisation Code (Code of Commissioner)	Data Item	Delete		Other standards – ODS
MHS101Referral	Organisation Identifier (Code of Commissioner)	Data Item	New		Other standards – ODS
MHS101Referral	Referring Organisation Code	Data Item	Delete		Other standards – ODS
MHS101Referral	Organisation Identifier (Referring)	Data item	New		Other standards – ODS
MHS101Referral	Specialised Mental Health Service Code	Data item	New		Specialised Commissioning
MHS101Referral	Source of Referral for Mental Health	Data Item	Amendment	Addition of new codes: A4 - Maternity Service C3 - Housing Service D2 - Occupational Health	
MHS102ServiceTypeReferredTo	Service or Team Type Referred To (Mental Health)	Data item	Amendment	Addition of new codes: A20 – Health Based Place of Safety Service D05 – Individual Placement and Support Service E04 – Enhanced/Intensive Support Service	<ul style="list-style-type: none"> <li>• Access and waiting times – Urgent and emergency care</li> <li>• Learning disability care services</li> <li>• Referral activity</li> </ul>
MHS102ServiceTypeReferredTo	Referral Rejection Time	Data Item	New		Access and waiting times – Urgent and emergency care

Group/Table	Data Item Name	Item Type	Item Amend Type	Change details	Change category
MHS103OtherReasonForReferral	Other Reason for Referral (Mental Health)	Data Item	Amendment	Delete code: 17 – Neurodevelopmental Conditions Addition of new codes: 24 – Neurodevelopmental Conditions, excluding Autism Spectrum Disorder 25 – Suspected Autism Spectrum Disorder 26 – Diagnosed Autism Spectrum Disorder 27 – Preconception perinatal mental health concern	<ul style="list-style-type: none"> <li>Autism care services</li> <li>Access and waiting times - Perinatal</li> </ul>
MHS104RTT	Waiting Time Measurement Type	Data Item	Amendment	Increase mandation from 'R', required to 'M', mandatory	Maintenance
MHS104RTT	Organisation Code (Patient Pathway Identifier Issuer)	Data Item	Delete		Other standards - ODS
MHS104RTT	Organisation Identifier (Patient Pathway Identifier Issuer)	Data Item	New		Other standards - ODS
MHS105OnwardReferral	Organisation Code (Receiving)	Data item	Delete		Other standards - ODS
MHS105OnwardReferral	Organisation Identifier (Receiving)	Data item	New		Other standards - ODS
MHS106DischargePlanAgreement	Discharge Plan Agreed By	Data item	Amendment	Increase mandation from 'R', required to 'M', mandatory	Maintenance
MHS106DischargePlanAgreement	Discharge Plan Agreed Time	Data item	New		Access and waiting times – Urgent and emergency care
MHS201CareContact	Organisation Code (Code of Commissioner)	Data item	Delete		Other standards - ODS

Group/Table	Data Item Name	Item Type	Item Amend Type	Change details	Change category
MHS201CareCont act	Organisation Identifier (Code of Commissioner)	Data item	New		Other standards - ODS
MHS201CareCont act	Site Code (Of Treatment)	Data item	Delete		Other standards - ODS
MHS201CareCont act	Organisation Site Identifier (Of Treatment)	Data item	New		Other standards - ODS
MHS201CareCont act	Specialised Mental Health Service Code	Data item	New		Specialised Commissioning
MHS202CareActiv ity	Procedure Scheme in Use	Data item	Delete	Replaced by Coded Procedure and Procedure Status (SNOMED CT) data item to allow the flow of qualifier information.	<ul style="list-style-type: none"> <li>• Access and waiting times – Adult acute mental health</li> <li>• Access and waiting times - EIP</li> <li>• Access and waiting times – Perinatal</li> <li>• Other standards – SNOMED CT</li> </ul>
MHS202CareActiv ity	Coded Procedure (Clinical Terminology)	Data item	Delete	Replaced by Coded Procedure and Procedure Status (SNOMED CT) data item to allow the flow of qualifier information.	<ul style="list-style-type: none"> <li>• Access and waiting times – Adult acute mental health</li> <li>• Access and waiting times - EIP</li> <li>• Access and waiting times – Perinatal</li> <li>• Other standards – SNOMED CT</li> </ul>
MHS202CareActiv ity	Coded Procedure And Procedure Status (SNOMED CT)	Data Item	New	Replace Procedure Scheme in Use and Coded Procedure (Clinical Terminology) data items with the new Coded Procedure and Procedure Status (SNOMED CT)	<ul style="list-style-type: none"> <li>• Access and waiting times – Adult acute mental health</li> <li>• Access and waiting times - EIP</li> </ul>

Group/Table	Data Item Name	Item Type	Item Amend Type	Change details	Change category
				data item to allow the flow of qualifier information.	<ul style="list-style-type: none"> <li>Access and waiting times - Perinatal</li> <li>Other standards – SNOMED CT</li> </ul>
MHS204IndirectActivity	Finding Scheme in Use	Data Item	New		<ul style="list-style-type: none"> <li>Access and waiting times – Urgent and emergency care</li> <li>Other standards – SNOMED CT</li> </ul>
MHS204IndirectActivity	Coded Finding (Coded Clinical Entry)	Data Item	New		<ul style="list-style-type: none"> <li>Access and waiting times – Urgent and emergency care</li> <li>Other standards SNOMED CT</li> </ul>
MHS204IndirectActivity	Organisation Code (Code of Commissioner)	Data item	Delete		Other standards - ODS
MHS204IndirectActivity	Organisation Identifier (Code of Commissioner)	Data item	New		Other standards - ODS
MHS204IndirectActivity	Procedure Scheme in Use	Data item	Delete	Replaced by Coded Procedure and Procedure Status (SNOMED CT) data item to allow the flow of qualifier information.	<ul style="list-style-type: none"> <li>Access and waiting times – Adult acute mental health</li> <li>Access and waiting times - EIP</li> <li>Access and waiting times – Perinatal</li> <li>Other standards – SNOMED CT</li> </ul>
MHS204IndirectActivity	Coded Procedure (Clinical Terminology)	Data item	Delete	Replaced by Coded Procedure and Procedure Status (SNOMED CT) data item to allow the flow of qualifier information.	<ul style="list-style-type: none"> <li>Access and waiting times – Adult acute mental health</li> <li>Access and waiting</li> </ul>

Group/Table	Data Item Name	Item Type	Item Amend Type	Change details	Change category
					<ul style="list-style-type: none"> <li>times - EIP</li> <li>• Access and waiting times – Perinatal</li> <li>• Other standards – SNOMED CT</li> </ul>
MHS204IndirectActivity	Coded Procedure And Procedure Status (SNOMED CT)	Data Item	New	Replace Procedure Scheme in Use and Coded Procedure (Clinical Terminology) data items with the new Coded Procedure and Procedure Status (SNOMED CT) data item to allow the flow of qualifier information.	<ul style="list-style-type: none"> <li>• Access and waiting times – Adult acute mental health</li> <li>• Access and waiting times - EIP</li> <li>• Access and waiting times – Perinatal</li> <li>• Other standards – SNOMED CT</li> </ul>
MHS301GroupSession	Service or Team Type Referred To (Mental Health)	Data item	Amendment	Addition of new codes: A20 – Health Based Place of Safety Service D05 – Individual Placement and Support Service E04 – Enhanced/Intensive Support Service	<ul style="list-style-type: none"> <li>• Access and waiting times – Urgent and emergency care</li> <li>• Learning disability care services</li> <li>• Referral activity</li> </ul>
MHS301GroupSession	Organisation Code (Code of Commissioner)	Data item	Delete		Other standards - ODS
MHS301GroupSession	Organisation Identifier (Code of Commissioner)	Data item	New		Other standards - ODS
MHS301GroupSession	Site code (Of Treatment)	Data item	Delete		Other standards - ODS
MHS301GroupSession	Organisation Site Identifier (Of Treatment)	Data item	New		Other standards - ODS
MHS501HospProv Spell	Source of Admission Code (Hospital Provider Spell)	Data item	Amend	Addition of new codes: 40 – Penal Establishment	Specialised Commissioning

Group/Table	Data Item Name	Item Type	Item Amend Type	Change details	Change category
				41 – Court 42 – Police Station/Police Custody Suite (Existing code 39 – Penal establishment, court, or Police Station/Police custody Suite remains)	
MHS501HospProv Spell	Postcode of Discharge Destination (Hospital Provider Spell)	Data item	New		Specialised commissioning
MHS501HospProv Spell	Estimated Discharge Date (Hospital Provider Spell)	Data item	New		Specialised commissioning
MHS502WardStay	Ward Code	Data item	New	New optional data item for local use.	Specialised commissioning
MHS502WardStay	Site Code (Of Treatment)	Data item	Delete		Other standards - ODS
MHS502WardStay	Organisation Site Identifier (Of Treatment)	Data item	New		Other standards - ODS
MHS502WardStay	Specialised Mental Health Service Code	Data item	New		Specialised commissioning
MHS502WardStay	End Date (Mental Health Trial Leave)	Data item	New		Specialised commissioning
MHS504DelayedDischarge	Organisation Identifier (Responsible Local Authority Mental Health Delayed Discharge)	Data item	New		Delayed transfers of care
MHS510LeaveOfAbsence	Escorted Mental Health Leave Of Absence Indicator	Data item	New	Associated codes: Y Yes, escorted N No, unescorted	Specialised commissioning
MHS512HospSpellComm	Organisation Code (Code of Commissioner)	Data item	Delete		Other standards - ODS

Group/Table	Data Item Name	Item Type	Item Amend Type	Change details	Change category
MHS512HospSpel IComm	Organisation Identifier (Code of Commissioner)	Data item	New		Other standards - ODS
MHS514TrialLeav e		Table	New		Specialised commissioning
MHS514TrialLeav e	Ward Stay Identifier	Data item	New		Specialised commissioning
MHS514TrialLeav e	Start Date (Mental Health Trial Leave)	Data item	New		Specialised commissioning
MHS514TrialLeav e	Start Time (Mental Health Trial Leave)	Data item	New		Specialised commissioning
MHS514TrialLeav e	End Date (Mental Health Trial Leave)	Data item	New		Specialised commissioning
MHS514TrialLeav e	End Time (Mental Health Trial Leave)	Data item	New		Specialised commissioning
MHS607CodedSc oreAssessmentCo nt		Table	Amend	Modify table name from MHS 607 Coded Scored Assessment (Contact) to MHS 607 Coded Scored Assessment (Care Activity)	Maintenance
MHS608AnonSelf Assess	Organisation Code (Code of Commissioner)	Data item	Delete		Other standards - ODS
MHS608AnonSelf Assess	Organisation Identifier (Code of Commissioner)	Data item	New		Other standards - ODS
MHS801Cluster Tool	Adult Mental Health Care Cluster Code (Initial)	Data item	Amend	Modify format from max an4 to an2	Maintenance
MHS803CareClus ter	Adult Mental Health Care Cluster Code (Final)	Data item	Amend	Modify format from max an4 to an2	Maintenance
MHS803CareClus ter	Child and Adolescent Mental Health Needs Based Grouping Code	Data item	Amend	Modify format from an3 to an2. Modify national code descriptions to include the old national codes e.g. 'Getting Advice. Neurodevelopment Assessment	Maintenance

